

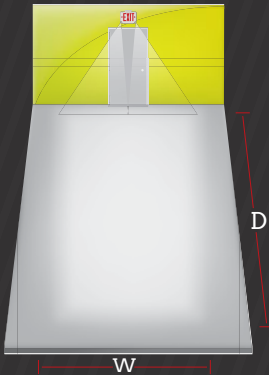
DUAL LITE

REMOTE CAPACITY



NOTE: Remote Capacity Option will only power the EVR2 and EVO remotes.

SINGLE UNIT COVERAGE



Meets Life Safety Code minimum illuminance of 0.1 fc and average illuminance of 1.0 fc. Assumes open space with no obstructions, mounting height of 7.5', ceiling height of 9' and reflectances of 80/50/20.

Current @

Current Lighting Solutions, LLC
701 Millennium Blvd.
Greenville, SC 29607

currentlighting.com/dual-lite

© 2022 HLI Solutions, Inc. All rights reserved. Information and specifications subject to change without notice. All values are design or typical values when measured under laboratory conditions.

Rev 05/23/22

0603551_etc_trifold_R01

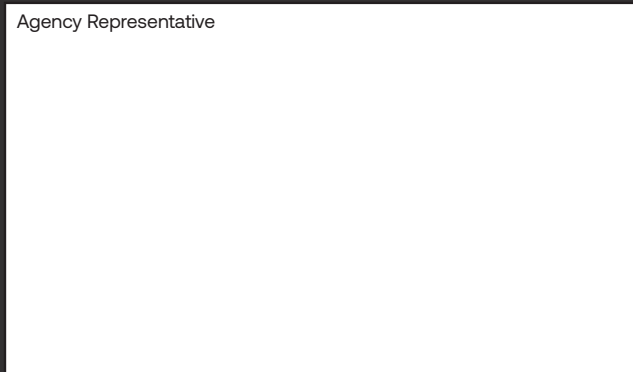
EV LED
COMBO



Combination Emergency Exit/Light

- Fully aimable, dual-ratcheting high output LED lamp-heads
- Bright and even EXIT panel illumination
- No-head option for up to 4 LED remotes
- Wall, ceiling or end mounting options
- Environmentally friendly, long life-cycle Lithium Iron Phosphate battery

Agency Representative



EV LED
COMBO



Performance

Design

Aesthetics

Sustainability

**The "Evolution" of
Emergency Lighting...**

0603551A

“The Evolution of Emergency Lighting” continues with the most technologically advanced emergency lighting family on the market.

Aesthetics | Sleek architectural styling

- Integral LED lamp-heads
- Compact, blends into any environment
- Sleek, visually appealing design
- Soft rounded contours and cloud-like appearance
- Sturdy and robust construction



Design | Ease of Installation and Maintenance

- Easy, quick installation
- Fully aimable, thermally controlled lamp-heads
- EVC uses dual-ratcheting design for full range lamp-head positioning
- Long life-cycle LEDs rated at 100,000 hours
- Premium battery types offer up to 40% greater life-cycle than lead acid

Performance | Sophisticated LED based lamp-head

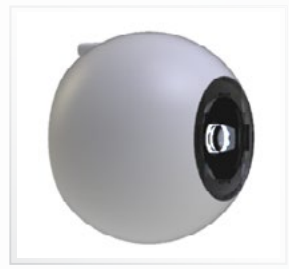
- Offers 30% greater illumination than traditional incandescent lamps
- Indoor and Outdoor remotes offer superior light output, flexibility and cost savings
- LED's only require 1 Watt of input power with 20' spacing
- Optional damp, remote capacity and Spectron® self-test/self-diagnostics
- Easy and convenient push-to-test modes for ensured compliance



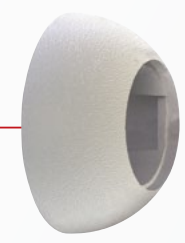
Sustainability | Our Future

- Up to 50% reduction in packing and plastic content
- Reduced input power requirements meet the strictest regulations
- “Green” power sources replace hazardous lead acid and Nickel Cadmium batteries
- LED life-time warranty minimizes maintenance and replacement parts waste

Fully aimable lamp-head



Die-cast aluminum for thermal dissipation



Acrylic lens provides optimal light transmission



LED offers cool white lamp color providing maximum light coverage with no hot spots

THERMAL MANAGEMENT

