



# Albeo® ABX Series

Linear High Bay



## Spend Less. Light Better. Save long term.

### Lower Total Ownership Cost

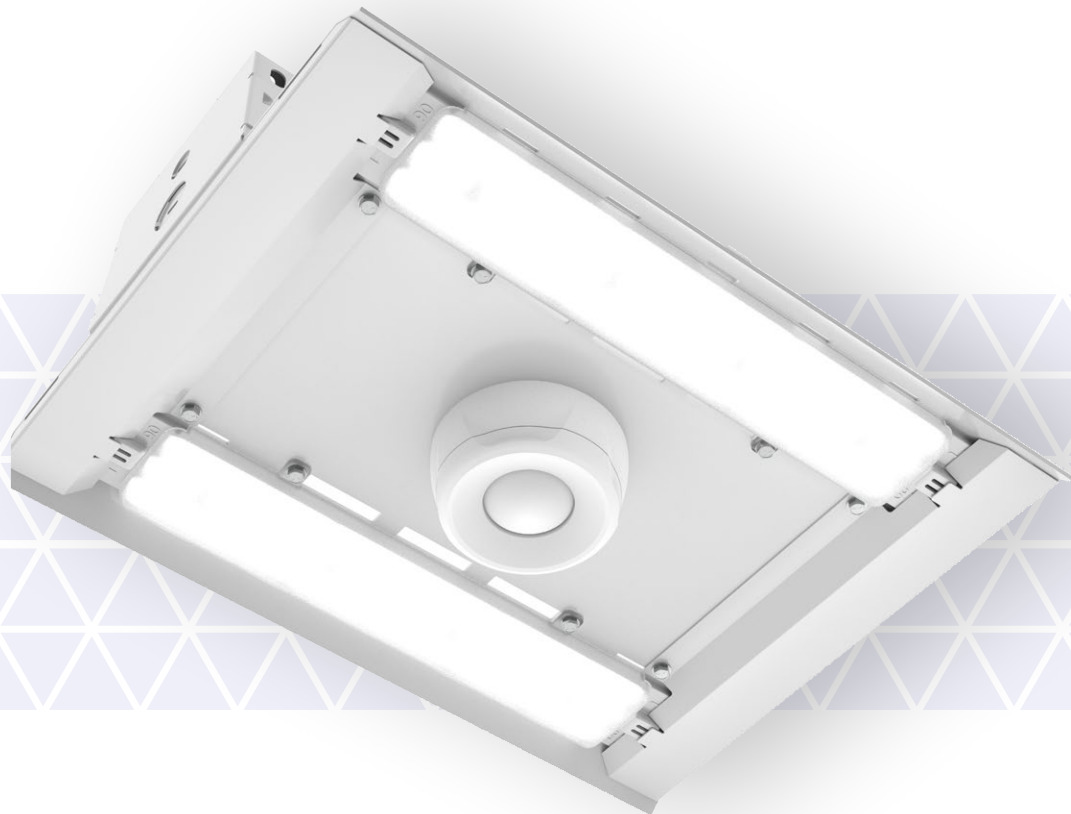
Reduce your initial spend while controlling lifetime operating expenses.

### Optimized Lighting Design

Champion efficient layouts with the right range of application-specific optics.

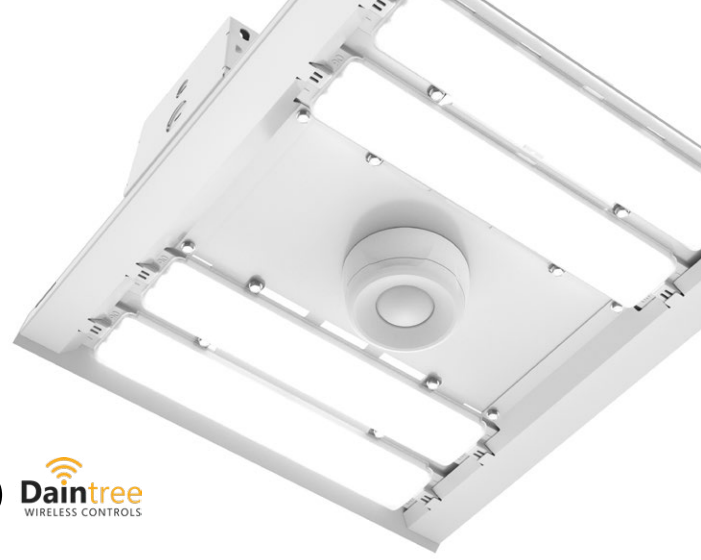
### North American Designed & Built

Engineered for quality and manufactured for predictable delivery.

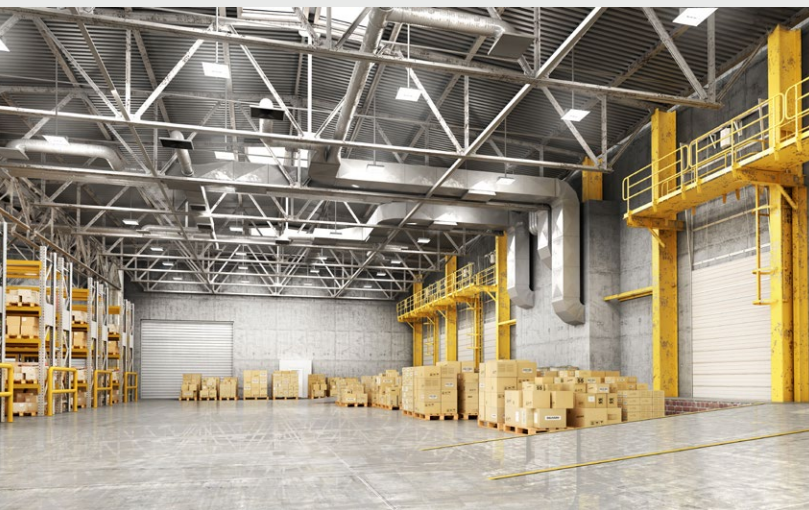


# Premium Performance. Smarter Spend.

**Albeo ABX** delivers premium, top-tier performance at import-level pricing. With fully configurable options for applications from tight aisles to parking garages, ABX enables you to win more projects.



<b>Lumen Range</b>	9,000–60,000 Lumens	<b>Mounting</b>	V-Hanger with 3ft chain, Gripple cable (5 / 10 / 15 / 20ft), surface mount, pendant mount, inverted mount
<b>Wattage Range</b>	480–360W	<b>Accessories</b>	Mounting kits, Wire guard, Emergency solutions
<b>LPW</b>	159–188LPW (176–192 LPW High Performance)	<b>Beam</b>	Aisle, Narrow, Medium, Wide, Very Wide (30°/55°/90°/120°/160°)
<b>Ambient Temp. Range</b>	–40° up to 45°C (–40° up to 55°C High Performance)	<b>Housing</b>	Aluminum LED heatsink, Steel Driver Enclosure
<b>CCT</b>	3000 / 3500 / 4000 / 5000K	<b>Lens</b>	Polycarbonate / Acrylic
<b>CRI</b>	70/80/90	<b>Finish</b>	Durable powder coat paint
<b>Dimming</b>	0–10V, DALI	<b>Certifications</b>	IK10, IP50 optical assembly, UL / cUL suitable for Damp Locations
<b>Controls</b>	Wireless Daintree, Standalone Sensors		
<b>Surge Rating</b>	10kV		
<b>Life Rating</b>	L70 @ 100,000 hours, Driver life +100,000 hours		



This application environment was developed with the assistance of AL

## ▶ Want to learn more?

For specific product technical questions, contact: [lightingproinfo@currentlighting.com](mailto:lightingproinfo@currentlighting.com)  
albeo.com

