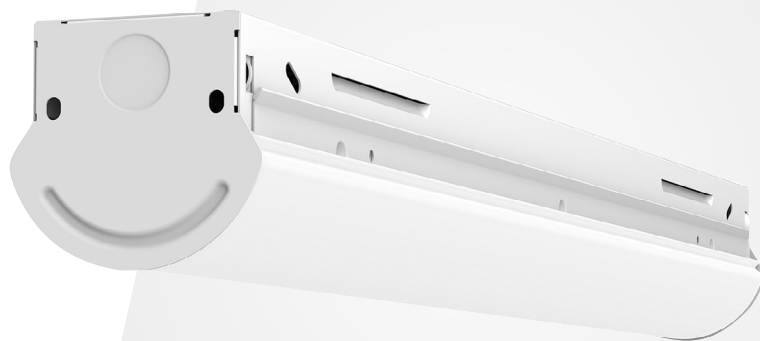




# Albeo® ALV3 Series

LED Linear Industrial Low Bay



## Integrated Controls

Daintree PIR occupancy sensor, dimming daylight harvesting, wired and wireless enabled for ease of programming.

## Continuous Row

Curved lens joiner and continuous row bracket allow the ALV3 to be one continuous row of light



## Lens Options

Curved Wide Distribution, Curved Narrow Distribution or No Lens.

## Optical Performance

Wide and Narrow distribution options for open area and aisle applications

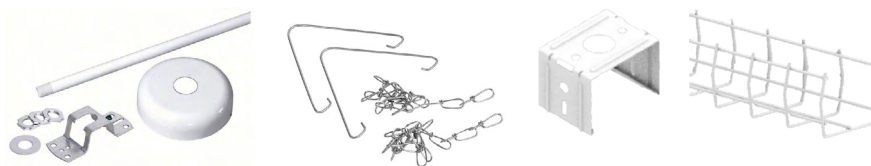
## Emergency Operation

CSA certified and UL924 emergency equipped fixtures available.



## Accessories

Multiple accessories allow for better protection and alternate mounting



# A Cost Effective, Linear LED Strip to get the job done

The Albeo® ALV series Gen 3 LED luminaire is an energy-efficient, cost effective linear led “strip” fixture for a variety of commercial/industrial, low bay and stairwell applications. This product can be matched with Daintree® motion, daylight and wireless controls from stand alone operation, zone based control or fully networked solutions for increased energy savings. ALV3 is designed for total cost of ownership over the product lifetime. From tool-less entry, plug-in continuous run links, ALV3 installs quickly and easily with no surprises.

## Applications

- Commercial
- Retail
- Industrial
- Stairwells

**Size:** 2ft, 4ft, 8ft

**Lens:** Polycarbonate Diffused, Acrylic Diffused

**Housing:** Steel Body

**Finish:** White Painted Parts

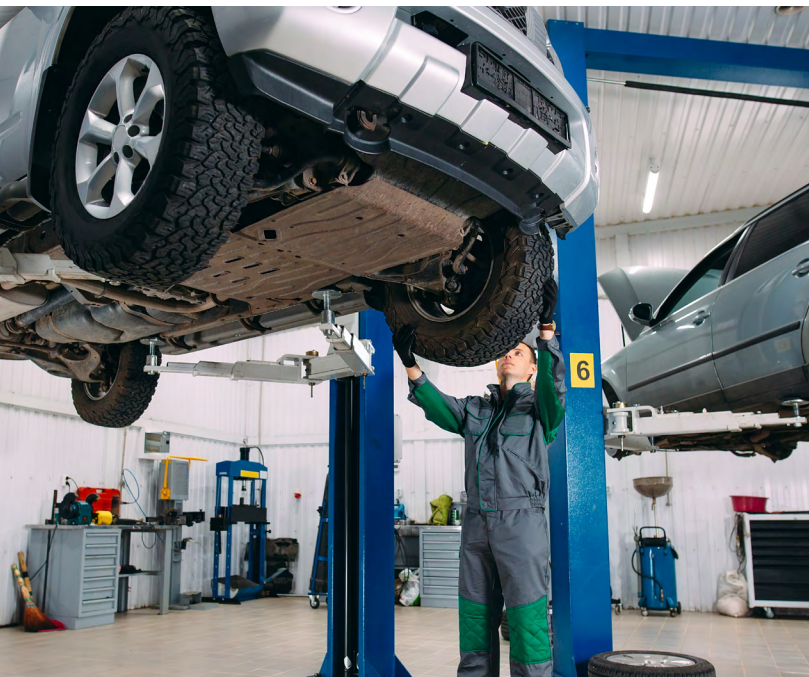
**Color Temp:** 3000K, 3500K, 4000K and 5000K

**CRI:** 80, 90

**Lumen Output:** 1,500 to 16,000

**Sensors:** High-end trim, occupancy and ambient light detection with dimming available. Wireless Daintree® options available.

**Voltage:** 120-277V; 347V



## Want to learn more?

For Specific product technical questions, contact: [lightingproinfo@gecurrent.com](mailto:lightingproinfo@gecurrent.com)