



WALL

THREE SIZES ONE FAMILY

Current 

 **BEACON**
design . performance . technology

WALL & FAMILY

Beacon's Viper Family has expanded to include wall products in addition to area and flood luminaires. Complementing contemporary or traditional architecture, the Viper Wall is available in three sizes and a wide range lumen outputs and distributions to satisfy any application.

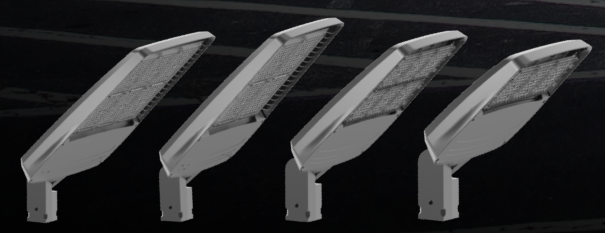
Viper Wall features a dense optical array which provides reduced pixelation and increased visual comfort without compromising performance. It is designed for sustained, long-term performance with advanced thermal management, an elegantly simple heat sink and industry leading surge protection.



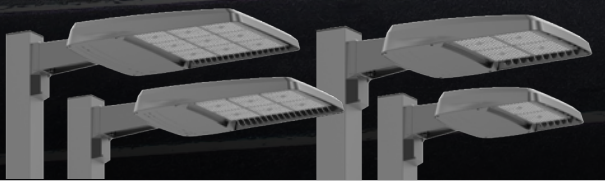
WALL



BOLLARD



FLOOD



AREA/SITE

Size	VPW1	VPW2	VPW3
Lumens	1,000-3,000	2,000-8,500	7,000-20,000
Watts	10-25	15-70	45-155
LPW	100-120	108-133	108-155
CCT	2700K, 3000K, 3500K, 4000K, 5000K, Amber		
Distributions	2, 3, 4F, 4W		
IP Rating	IP65		
Legacy Equivalence	42W-175W	175-250W	175W-400W

The Viper Wall takes the contemporary form introduced with the Viper Area and Viper Flood products and adapts it into a complementary wall form. This versatile luminaire blends sleek lines and low glare optics with superior performance and a plethora of controls and emergency options. In addition to the standard product, a back box accessory as well as an integral back box option allow added versatility for mounting flexibility and added space for more options.

Viper's unique optical design combines visual uniformity with the precise distribution of the Micro Strike Optics

This outstanding optic control simplifies layouts and installations, energy consumption, lowers installation costs and improves visual acuity

Several integral controls and battery options are offered in the standard housing without needing the addition of the integral back box



INSTALLATION

Viper Wall was designed with mounting flexibility in mind. Between the standard housing, the back box accessory, and the integral back box this luminaire makes installation easy.

VIPER WALL

Standard Fixture



Wiring connections made in junction box

Wiring connection made in fixture

Back Box Accessory

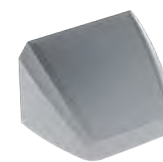


Allows fixture to mount to corrugated surfaces

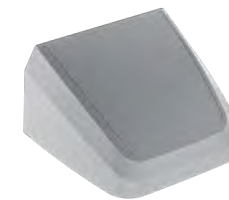
Provides four locations for conduit entry

Back Up Battery

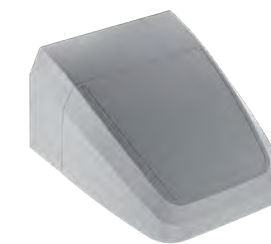
Viper VPW1



Viper VPW2



Viper VPW2 with Battery Backup



Viper VPW3



*See ordering information pages 10-11

PERFORMANCE

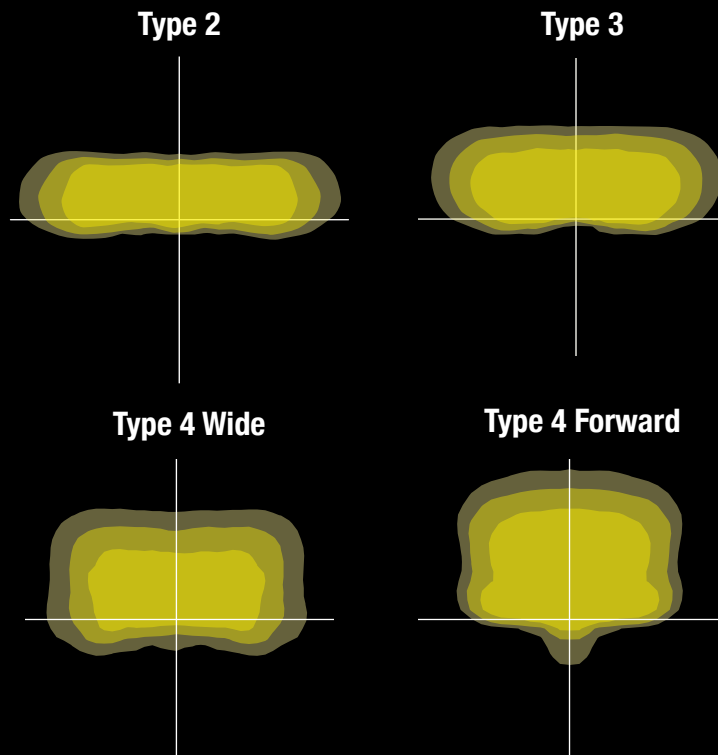
IES comparison

The Viper Wall is available with three distinct distribution patterns to illuminate a variety of applications. Featuring Micro Strike Optics which maximizes target zone illumination with minimal losses at the house-side, reducing light trespass. In the illustration below, the Viper Wall luminaires illuminate the building perimeter and contribute substantial illumination to the parking area and drive lanes adjacent to the building.

MICRO STRIKE

VIPER WALL MICRO STRIKE OPTICS

Micro Strike optics are one of the optical choices available in the Viper. These optics have been specifically designed to replace HID luminaires with improved uniformity on application. This, combined with the high lumens per watt, makes Micro Strike the perfect choice for the most common applications.



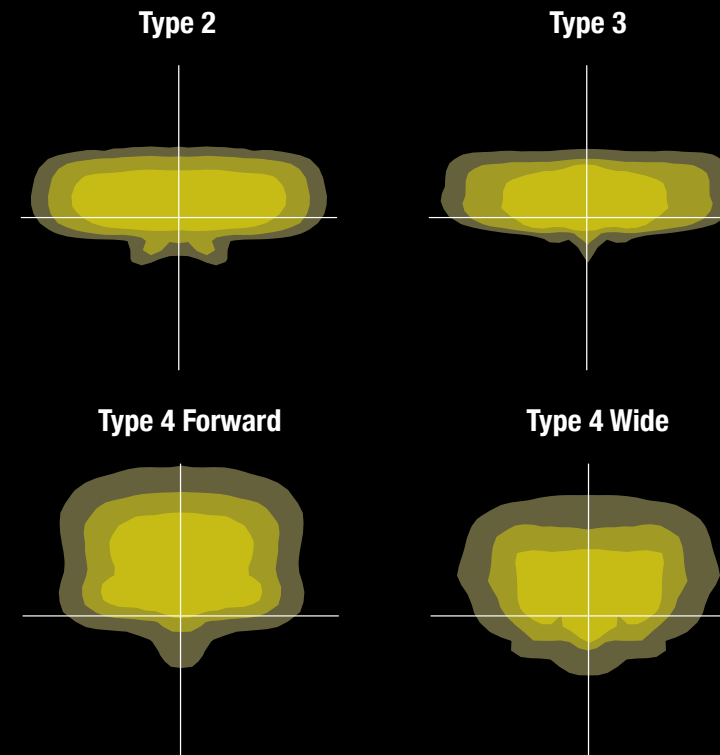
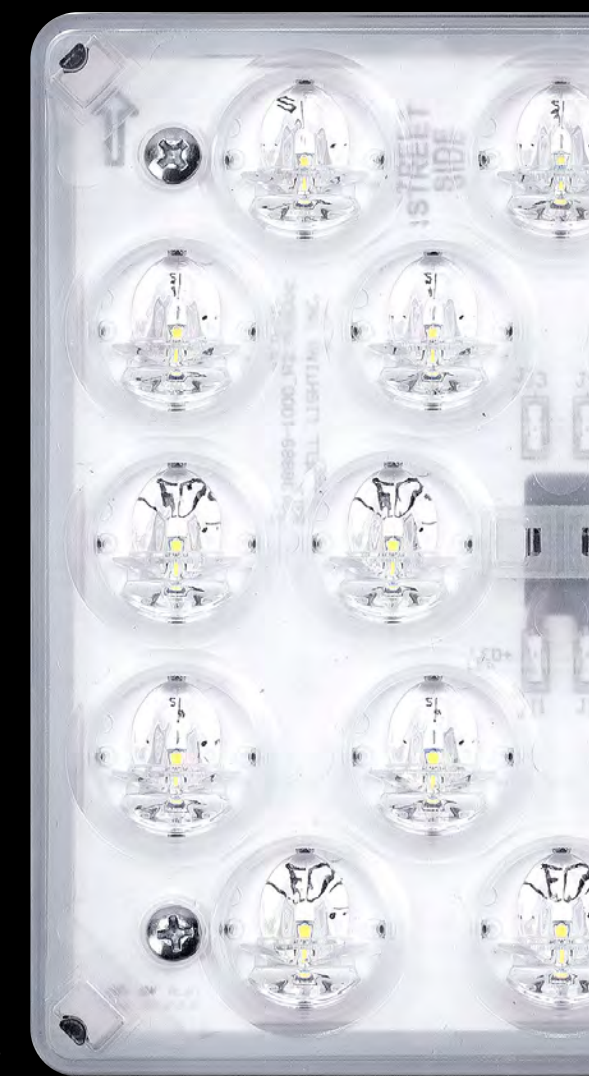
BENEFITS

- Key distributions for every day applications
- High efficacy and lumens per watt
- Single piece optic provides more visual comfort
- Phosphor converted amber LED option
- Backlight control available to reduce light behind the pole

VIPER WALL STRIKE OPTICS

Strike optics are another optic choice that allow for maximized pole spacing, minimal backlight and provide specialty distributions for unique application requirements.

OPTICS STRIKE



BENEFITS

- Specialty Distributions for unique applications or specification requirements
- Maximum Fixture Spacing
- Individual optics provide greater optical control
- True amber LED option
- Backlight control available to reduce light behind the pole

INTEGRATED CONTROLS

VIPER WALL

The control solutions outlined below help save energy, extend luminaire life and allow customizable solutions. Sensors control light output based on area utilization and are used for energy savings and local code compliance.



STANDALONE CONTROLS FUNCTIONALITY

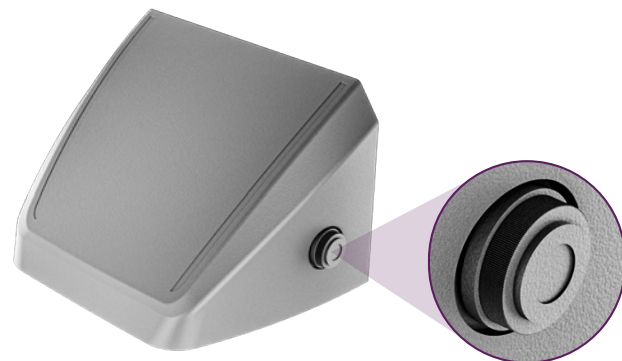
Occupancy Sensor

- Individual fixture control
- Dims product when space is not occupied



Photocontrol

- Individual fixture control
- Turns fixture on when sun sets



INTEGRATED CONTROLS



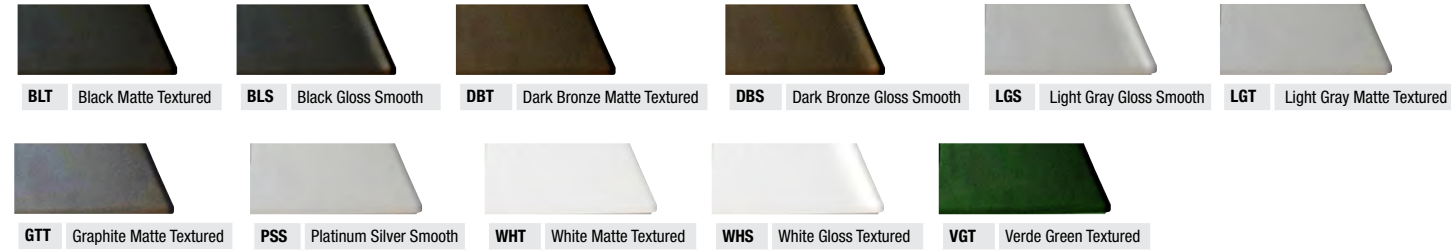
NX Lighting Controls platform delivers a lighting control solution capable of seamlessly connecting exterior and interior applications.

- Standalone or networked fixture control
- Astronomical time schedules
- BACnet building networking
- Connects with indoor wired, wireless or hybrid networks
- Wireless setup via NX Lighting Controls mobile app
- Occupancy Sensor option dims product when space is not occupied
- Available on Viper VPW2 and VPW3 only



WALL ORDERING INFORMATION

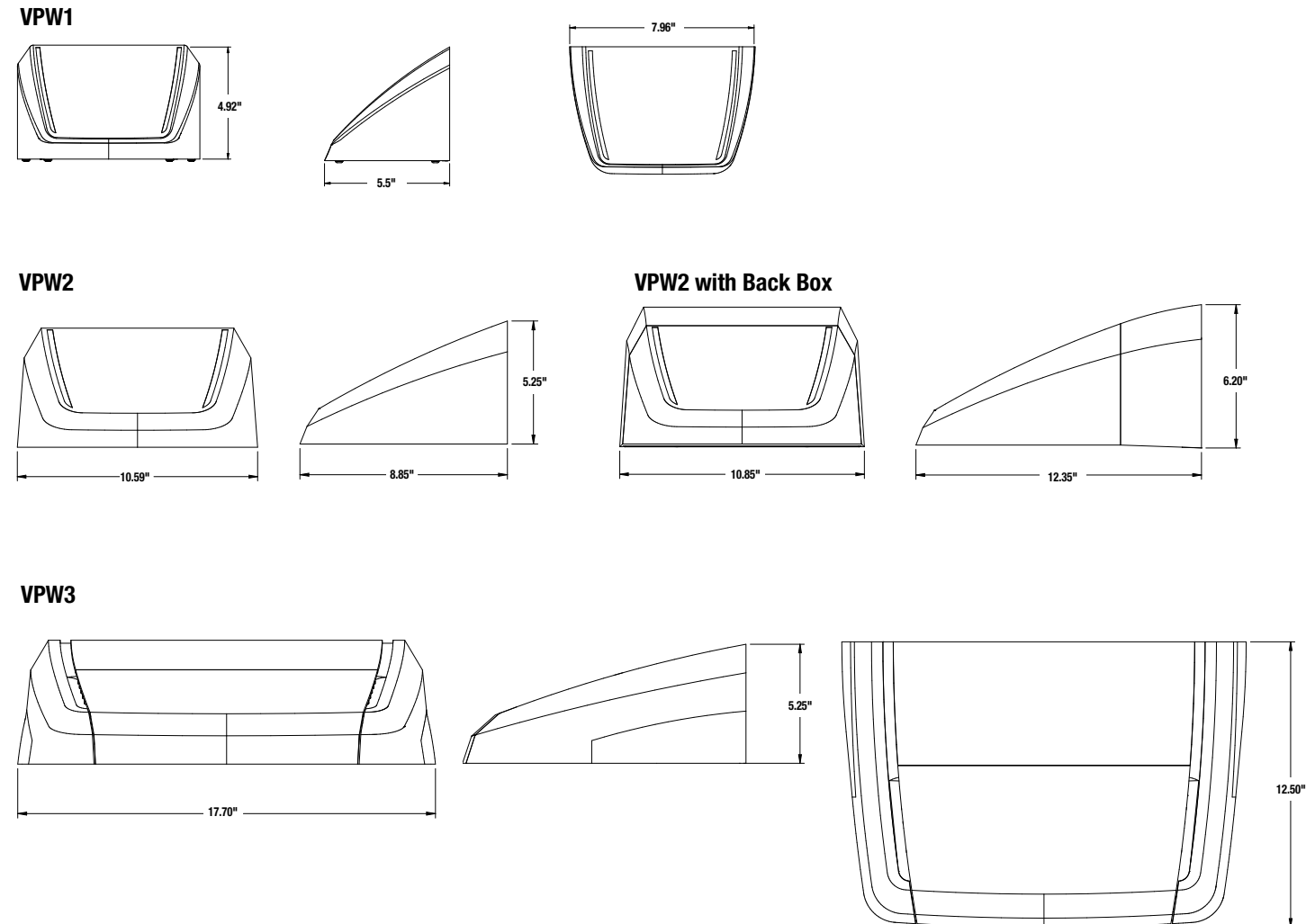
FINISH OPTIONS



ACCESSORIES - Order Separately

Catalog Number	Description	Notes:
<input type="checkbox"/> WP-BB-XXX	Accessory for conduit entry ¹	1 Replace "XXX" with color option
<input type="checkbox"/> CS	Comfort Shield	

DIMENSIONS



ORDERING INFORMATION

Example: VPW1-24L-10-3K7-2-UNV-BLS

Series	# LEDs - Wattage	CCT/CRI	Distribution	Voltage	Color
VPW1 Viper Wall 1	24L-10	1,000 Lumens	FR Auto Front Row ⁷ 2 IES TYPE 2 3 IES TYPE 3 4F IES TYPE 4 Forward 4W IES TYPE 4W	UNV 120-277V 120 120V 208 208V 240 240V 277 277V 347 347V 480 480V	BLT Black Matte Textured BLS Black Gloss Smooth DBT Dark Bronze Matte Textured DBS Dark Bronze Gloss Smooth GTT Graphite Matte Textured LGS Light Grey Gloss Smooth LGT Light Grey Matte Textured PSS Platinum Silver Smooth WHT White Matte Textured WHS White Gloss Smooth VGT Verde Green Textured
	24L-15	2,000 Lumens			
	24L-25	3,000 Lumens			
	48L-15	2,000 Lumens			
	48L-20	3,000 Lumens			
	48L-30	4,000 Lumens			
	48L-35	5,000 Lumens			
	48L-45	6,000 Lumens			
	80L-20	3,000 Lumens			
	80L-25	4,000 Lumens			
VPW2 Viper Wall 2	80L-35	5,000 Lumens	27K8 2700K, 80 CRI 3K7 3000K, 70 CRI 4K7 4000K, 70 CRI 5K7 5000K, 70 CRI 3K8 3000K, 80 CRI 35K8 3500K, 80 CRI 4K8 4000K, 80 CRI 5K8 5000K, 80 CRI AP Phosphor Converted Amber ¹		CC Custom Color
	80L-45	6,000 Lumens			
	80L-55	7,000 Lumens			
	80L-65	8,000 Lumens			
	80L-70	8,500 Lumens			
	18L-25	3,000 Lumens, Strike Optics			
	18L-30	4,000 Lumens, Strike Optics			
	18L-39	4,750 Lumens, Strike Optics			
	18L-50	6,000 Lumens, Strike Optics			
	18L-60	6,500 Lumens, Strike Optics			
VPW3 Viper Wall 3	160L-45	7,000 Lumens			
	160L-70	10,000 Lumens			
	160L-95	12,500 Lumens			
	160L-105	15,000 Lumens			
	160L-135	17,500 Lumens			
	160L-155	20,000 Lumens			
	36L-55	7,000 Lumens, Strike Optics			
	36L-80	9,500 Lumens, Strike Optics			
36L-100	11,500 Lumens, Strike Optics				
36L-120	13,000 Lumens, Strike Optics				

Control Options Network ^{3,7,13}	
NXWS12F	NX Networked Wireless Enabled Integral NXSMP2-OMNI PIR Occupancy Sensor with Automatic Dimming Photocell and Bluetooth Programming ⁴
NXWS16F	NX Networked Wireless Enabled Integral NXSMP2-LMO PIR Occupancy Sensor with Automatic Dimming Photocell and Bluetooth Programming ⁹
NXWS24F	NX Networked Wireless Enabled Integral NXSMP2-OMNI-HM PIR Occupancy Sensor with Automatic Dimming Photocell and Bluetooth Programming ⁹
NXWS40F	NX Networked Wireless Enabled Integral NXSMP2-HMO PIR Occupancy Sensor with Automatic Dimming Photocell and Bluetooth Programming ⁹
NXW	NX Networked Wireless Radio Module NXRM2 and Bluetooth Programming, without Sensor
WIR	LightGRID+ In-Fixture Module ⁹
WIRSC	LightGRID+ In-Fixture Module with BTS occupancy ⁹
Stand Alone Sensors ^{7,13}	
BTS-14F	Bluetooth® Programmable, PIR Occupancy/Daylight Sensor ^{4,9}
BTS-40F	Bluetooth® Programmable, PIR Occupancy/Daylight Sensor ^{4,9}
BTSO-12F	Bluetooth® Programmable, PIR Occupancy/Daylight Sensor, up to 12' mounting height ⁴
Photocontrol ¹³	
PC	Button Photocontrol 120-277V

Options	
F	Fusing ^{5,7}
E	Battery ^{6,7,8}
EH	Battery with Heater ^{6,7,8}
CS	Comfort Shield ^{7,9}
SP	10kA Surge Protector
2PF	Dual Power Feed ^{2,7,8}
2DR	Dual Driver ^{2,7,8}
CD	Customer Dimming ¹²
DTS	Dimming Transfer Switch ⁷

- Notes:
- Available with Micro Strike Optics only
 - Not available with 480V in Size 1 and Size 2
 - Networked controls cannot be combined with other control options
 - Not available with VPW1 or with 2PF or 2DR options
 - Must specify voltage (VPW1 & VPW2: 120V, 277V or 347V; VPW3: 120V, 208V, 240V, 277V, 347V or 480V)
 - See page 10 for detail Battery configurations
 - Not available in VPW1
 - 2PF can't be combined with E or EH; 2DR can't be combined with E or EH in VPW2
 - Not available in VPW1 and VPW2
 - Not available with Micro Strike 24L and 48L
 - Not available with Strike 18L and 36L
 - Not available with 2PF
 - Not available with Network Control options or Stand Alone Sensors. Can be ordered with PC
 - Not available in 480V in VPW2. Only available in 480V in VPW3 in 80W, 100W, 120W, 135W and 155W
 - NXWS12F and BTSO-12F are the only sensors available in VPW2



Current @

Current - HLI Brands

701 Millennium Blvd.
Greenville, SC 29607

currentlighting.com/beacon

© 2024 Current Lighting Solutions, LLC. All rights reserved. Information and specifications subject to change without notice. All values are design or typical values when measured under laboratory conditions.

(Rev May 23, 2024 8:21 AM)

BEA_Viper_Wall_brochure_R01