

# CWM

---

CONTEMPORARY  
LED WALL MOUNT

# CWM

## CONTEMPORARY LED WALL MOUNT

CWM is based on a simple, modular design that allows you to create an entirely new solution; one that does what no other luminaire can do. A variety of options allow you to become the designer and personalize the light, tailoring it to your precise vision and application. CWM becomes a corridor, vanity or decorative luminaire in three simple steps.



### Controls Technology

CWM luminaires offer SpectraSync™ and NX Lighting Controls technology in a clean unobtrusive manner. CWM easily integrates into the wired NX Lighting Controls system.



### Emergency Solutions

Emergency equipped luminaires are labeled and certified to meet UL924 requirements.

### Architectural Aesthetics

Architecturally styled end caps deliver clean aesthetics and flexibility for a variety of applications.

### Designed Illumination

Proprietary profile lens design provides a uniform appearance and enhanced visual comfort resulting in a pleasing, illuminated environment.

### Best-in-Class Efficacy

High performance light engine provides wide range of outputs and up to 140 Lumens Per Watt (LPW).

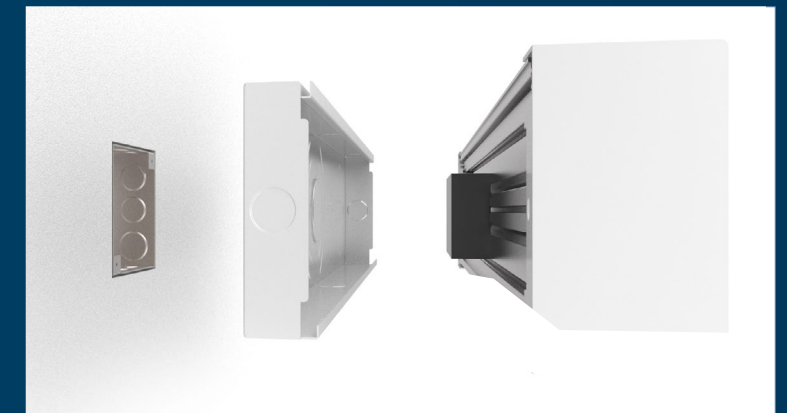
### Connect. Mount. Done. — That's the installation guide!

CWM comes shipped complete with no disassembly required in order to mount the luminaire. The one-time installation is as easy as one-two-three. Simply connect the power, mount the luminaire and apply power.

Luminaire installation has never been easier.

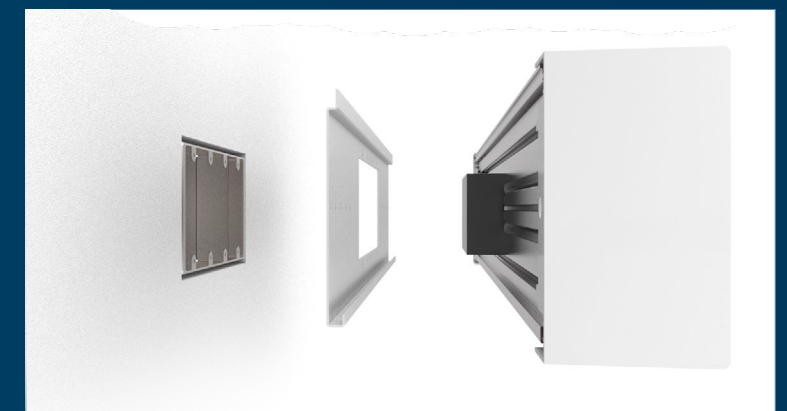
### Surface Mounting

For those hard-to-access areas or where building construction does not allow for the semi-recessing of the fixture, the surface mount CWM can be applied to virtually anywhere the design calls for direct ambient light — without compromising the ease of installation.



### Semi-Recessed Mounting

The semi-recessed mounting allows the fixture to blend into the environment with a reduced overall depth for a more slender and unobtrusive appearance. In most configurations, this depth can be reduced to 3 inches or less.





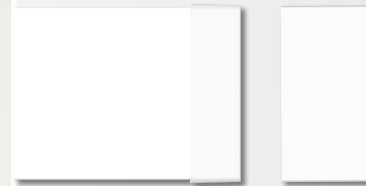
Vanity



Corridor

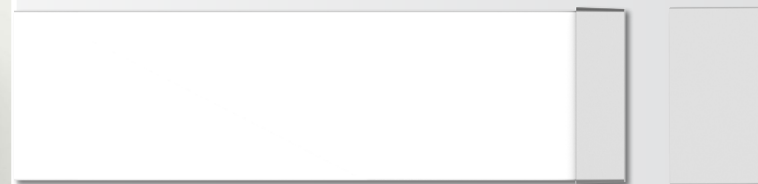
## Designed to Change with the Times

We're working with amazing technologies to create solutions that evolve to meet future trends and extend the typical life of LED luminaires far beyond today's industry standards.



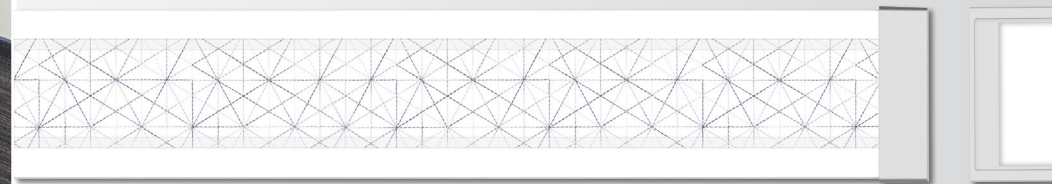
### Choose your style

Choose from a wide range of lenses, end caps and material types to create your personalized luminaire.



### Swap styles anytime

Switch the design of the luminaire whenever you want a new look or to transition the space to a new design.



### Add new styles, not size

CWM accessories mount easily to the luminaire and integrate seamlessly without changing the overall depth and width of the luminaire.



Reception



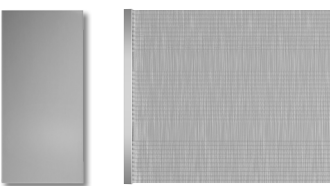
Healthcare

## Timeless Designs for Architectural Applications

Designed to stand the test of time, the CWM utilizes natural looking finishes, shapes, and materials to create stunning environments.

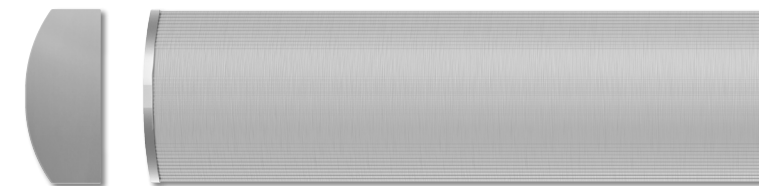
### Control your space

Choose from an array of controls options and technologies to increase energy savings and meet code compliance.



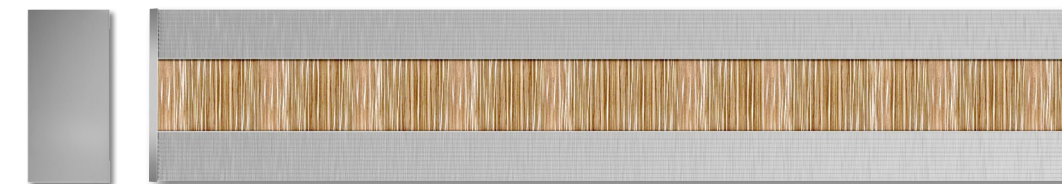
### Highlight architectural features

The direct/indirect CWM offers the ability to soften the appearance of a wall mounted luminaire and create emphasis on the architecture in the space.



### Versatility, not singularity

CWM was designed to cover various parts of your building regardless of design, architecture, or most important of all, your budget.



SpectraSync™ Control your space based on the needs of the application, specific activities throughout the day and preferences of the occupants with SpectraSync™ Color Tuning Technology.



Tunable White

Tunable White offers you the ability to tailor correlated color temperature (CCT) to your personal preference, enhancing task visibility, material and colors, and the aesthetics of the space. (Available with 2700K–5000K or 2700K–6500K)



Enhance CWM with NX Lighting Controls.

The CWM luminaires are available with integrated NX Lighting Controls, offering complete, code-compliant lighting controls with 0–10V dimming, on/off control, time schedules and native BACnet® building networking built in.



Simple

NX integrated linear luminaires simplify planning and reduce installation costs and complexity – no additional control wiring.

Ordering Information

Example: CWM4–40MLSM–FRFP–EDU

CWM					
Model	Size	Color Temp	Delivered Lumens <sup>2</sup>	Mounting	Lens
CWM	2 2'	30 3000K	XW 4' (2530) <sup>3</sup>	SM Surface Mount	FR Frosted Rectilinear Lens
Contemporary LED Wall Mount	4 4'	35 3500K	VW 2' (1664), 4' (3239)	SR Semi-Recessed	SB Slotted Lens with Bamboo Insert
		40 4000K	MW 2' (2013), 4' (3633)		SF Slotted Lens with Fabric Insert
		50 5000K	LW 2' (2439), 4' (4273) <sup>4</sup>		DIS Direct/Indirect Straight Aluminum Lens
		2750T 2700K-5000K SpectraSync™ Tunable White <sup>1</sup>	ML 2' (3310), 4' (4831) <sup>5</sup>		DISB Direct/Indirect Straight Aluminum Lens with Bamboo Insert
		2765T 2700K-6500K SpectraSync™ Tunable White <sup>1</sup>			DISF Direct/Indirect Straight Aluminum Lens with Fabric Insert
					DIC Direct/Indirect Curved Aluminum Lens
					DICB Direct/Indirect Curved Aluminum Lens with Bamboo Insert
					DICF Direct/Indirect Curved Aluminum Lens with Fabric Insert

End Caps	Driver	Voltage	Options	Control Options
FP Flat Plastic End Caps <sup>6</sup>	ED 0-10V Dimming	U 120V–277V	ELL14 Emergency Battery Pack, 1400 Lumens <sup>8</sup>	<u>NX Networked – Wired</u>
FA Flat Aluminum End Caps <sup>7</sup>	ED1 0-10V 1% Dimming		GLR Fast Blow Fuse	NXE NX Dual RJ45 SmartPORTs, without Sensor <sup>12,13,14</sup>
WA Aluminum End Caps with Glow Ends <sup>6</sup>	EDD 0-10V Dim-to-Dark		LVC1 Low Voltage Controller for individual control of the reading function <sup>9,10,11</sup>	<u>Third-Party Control Options</u>
			LVC2 Low Voltage Controller for individual or sequential control of two (2) independent functions. Use LVC Selection Chart included in this document to complete ordering code (Ex. LVC21, LVC22) <sup>9,10,11</sup>	HFU High Frequency Ultra-sonic Occupancy Sensor <sup>12,13,15</sup>
			LVC2 Low Voltage Controller for up to three (3) functions with one (1) or two (2) functions having 0–10v dimming and the remaining function(s) being controlled independently. Use LVC Selection Chart on next page to complete ordering code (Ex. LVC2ST5, LVC2SM4) <sup>9,10,11</sup>	OW Occupancy Sensor, Wattstopper <sup>12,13,15,16,17</sup>
			P4L 4-Pole Pull Switch (mounted to the left as facing the luminaire) <sup>9,10,11</sup>	
			P4R 4-Pole Pull Switch (mounted to the right as facing the luminaire) <sup>9,10,11</sup>	

- Notes:
- Available with ED driver only, N/A with ELL14 (2') or SR (2'&4') options
  - Based on the 4000K with FR lens. See CWM Performance Data Sheet for extended lumen data
  - XW only available with 4'
  - LW with SR mounting not compatible with through wiring on 4' version
  - ML not available with SR mounting option. ML Direct/Indirect only available in 2'
  - Not available on Direct/Indirect
  - Standard for Direct/Indirect
  - Battery backup only available with SM mounting option
  - LVC and Pull Switch only available with Direct/Indirect lens option
  - LVC and Pull Switch available in 120V only
  - LVC and Pull Switch available in Surface Mount only
- NX In-Fixture Control Options:
- NX controls can only be used with NX Sensor options
  - Not available with LVC or Pull Switch
  - NX is available with ED and ED1 drivers only
- Third-Party Control Options:
- HFU and OW only available with SM mounting option
  - Not recommended for stairwell applications
  - Only available with ED driver

LVC SELECTION CHART		
The Low Voltage Controller (LVC) option allows control of the luminaire functions from a patient pillow switch, bed side rail or wall switch with normally-open momentary dry contacts. Depending on the number of modes to be controlled, various control options are available.		
Independent	I	Dedicated On/Off control for a single load.
Sequential	S	On/Off Control of two loads by sequentially cycling through them
Step dim	ST	Stepped light levels in 25% increments with each toggle of the low voltage switch.
Smooth dim	SM	Smooth increase in light level from a starting point of 25% by continuing to press the switch. When released, pressed and held again, the light level decreases until the switch is released.

LVC ORDERING CODE	FUNCTION	
	AMBIENT (top compartment)	READING (bottom compartment)
LVC1		I
LVC21	I or S*	I or S*
LVC2ST4	ST	I
LVC2ST5	I	ST
LVC2ST6	ST	ST
LVC2SM4	SM	I
LVC2SM5	I	SM
LVC2SM6	SM	SM

\*The selection of Individual (I) or sequential (S) control is determined by in-field connections at the control(s).



**Current Lighting Solutions, LLC**

701 Millennium Blvd.  
Greenville, SC 29607

**[currentlighting.com/columbialighting](https://currentlighting.com/columbialighting)**

© 2023 HLI Solutions, Inc. All rights reserved. Information and specifications subject to change without notice. All values are design or typical values when measured under laboratory conditions.

Rev 04/12/23

**COL\_CWM\_B\_R02**

---