

---

# Industrial Lighting Overview

---

Efficiency, Safety, and Reliability.

GLI Brands

Current





# Current

At Current, we know that the right lighting transforms industrial spaces. From manufacturing floors to warehouse aisles, and even hazardous environments, our solutions boost productivity, safety, and efficiency.

Our range of industrial lighting and control solutions is tailored to your needs.

Let us help you illuminate your workspace and discover how we can make a real difference in your industrial environment.

- 1. Warehouse
- 2. Task
- 3. Hazardous & Demanding
- 4. Cold Storage/Food Processing
- 5. Office & Administration
- 6. Corridors & Stairwell
- 7. Restrooms
- 8. Area & Site
- 9. Floodlighting
  - Controls

**ProLine**<sup>®</sup>  
Contractor focused, in-stock, and readily available.  
Same day shipping

**QS10**  
Meet tight timelines with made-to-order  
products shipped within 10 business days.



## Warehouse

In the rapidly evolving industrial landscape, efficient, effective lighting in warehouses is crucial for boosting productivity, safety, and sustainability. Ensuring optimal lighting is key for uninterrupted operations.

Inadequate lighting systems not only raise safety hazards and energy costs but also lower operational efficiency. Modern logistics demand innovative lighting solutions to address these issues. Current's comprehensive selection of linear high bays meets all warehouse lighting needs, ensuring enhanced visibility and safety.

*Current's high bay LED lights are a high-efficiency option, outperforming traditional lighting in quality.*



### PHB

A linear high bay that offers 120-347V, selectable lumen and CCT and a field-installable sensors as well as other accessories for maximum flexibility.

**ProLine**

### ABV

Specification High Bay offering market leading performance, reliability and flexible configurations with Daintree controls. The original compact highbay, optimizing total cost of ownership.

**QS10**

### ALV

Quick and easy to install Linear Fixture that can be matched with Daintree motion, daylight, and wireless controls to increase energy savings.

### PRC

NSF and IP65 rated high bay offering universal 120-347V, selectable lumens and CCT's, field installable sensors and accessories.

**ProLine**

### ABC

BAA/TAA certified Compact High Bay fixture with lumen packages up to 48,500 and Daintree controls.

**QS10**



## Task

Distribution centers and warehouses demand exceptional visibility, particularly around corners and along aisles. When you factor in the swift movement of forklifts and the necessity for workers to easily read inventory labels, the importance of lighting that promotes safety and clarity becomes paramount for seamless and worry-free operations.

High bay LED lighting from Current offers a highly efficient solution, combining simplicity and functionality, and surpassing the performance of traditional HID and linear lighting products in terms of light quality.



## PSF

Strip fixture with selectable lumens and CCT's, fast and easy mounting, and Daintree EZ connect controls accessory kits available.

## ALC6

Efficient Linear fixture with Daintree control options for code compliance and additional energy savings.

## ALV

Linear strip fixture that installs quickly with tool-less entry, plug-in continuous run links and can be matched with Daintree control for energy savings.



## Hazardous & Demanding

Hazardous and Demanding Industrial applications inherently bring severe operating conditions, such as extreme temperatures, exposure to chemicals, and potential risk of explosions. Lighting solutions must be able to withstand these challenges while ensuring optimal visibility and safety for personnel.

Current's Hazardous and Demand light fixtures are specifically designed for these applications, and are more than capable of delivering reliable illumination, mitigating safety risks, and minimizing maintenance efforts and costs.



### AHH

The Albeo® AHH2 LED luminaire is a Class I, Division 2, Groups A,B,C, and D rated fixture for hazardous locations with high ambient temperatures and wet applications. Utilizing a sealed, IP66-rated form factor, the Albeo AHH2 series offers customers a rugged design with exceptional performance and high reliability.

### ABR

The Albeo® ABR offers customers a rugged design with exceptional performance and reliability. IP66-rated for demanding environments at high ambient temperatures and wireless Daintree controls enabled with motion sensor.

### AH2

The Albeo® AH2 offers hazardous location lighting at high ambient temperatures. Ideal for new construction or can retrofit the Filtr-Gard™ H2 Hazardous Fixture.

### AHG

The Albeo® AHG LED fixture is an enclosed & gasketed hazardous location LED product. AHG is standard Class 1, Division 2, Groups A, B, C & D.



## Office & Administration

Save energy and boost productivity with LED office lighting from Current. Our versatile and energy-efficient solutions are perfect for any office space, enhancing both employee and customer well-being.

Our LED lights not only save energy but also add a modern, professional look to your workspace. Available in various styles and finishes, they match any interior design seamlessly. Advanced smart controls let you easily adjust brightness and color temperature. Features like automated scheduling and occupancy sensing optimize energy use even further.



## Corridors & Stairwell

Ensure your corridors and stairwells are safe and energy-efficient with Current's lighting solutions that provide excellent visibility, uniform illumination, and emergency capabilities—all while offering controllable options to meet your specific needs. Trust our expertise to deliver lighting that not only enhances safety but also optimizes energy consumption, ensuring your projects are both high-performing and cost-effective.



### LBP

Lensed troffer with selectable lumens and CCT's, recessed or surface mounting and wireless Daintree control options.

**ProLine**

### LVT

Recessed luminaire offering uniform light, excellent efficiency, reduced glare and Daintree controls

### PSF

Strip fixture with selectable lumens and CCT's, fast and easy mounting, and Daintree EZ connect controls accessory kits available.

**ProLine**

### ALC6

Efficient Linear fixture with Daintree control options for code compliance and additional energy savings.

### ALV3

Linear strip fixture that installs quickly with tool-less entry, plug-in continuous run links and can be matched with Daintree control for energy savings.



## Cold Storage/Food Processing

Traditional lighting in this space often falls short because cold temperatures can make traditional lamps less effective as gases condense and connection points fail. LED lighting, however, thrives in the cold, running at lower temperatures and standing up to extreme conditions.

Lighting solutions that consider the entire cold storage area, from surfaces to air, can significantly boost your business, giving you an edge over the competition.

*With Current LED solutions, you get safer food handling and more efficient lighting. Our versatile lamps and fixtures cut down on wasted energy, and our control options let you monitor the space effortlessly.*



### ABN

NSF rated High/Low bay fixture capable of 9,000-28,000 lumens with excellent color rendering and flexible control options with Daintree wireless sensors.

### ALR

IP and NSF rated low bay fixture that can be matched with motion, daylight and wireless controls for increased energy savings.

### PLR

NSF, Wet Location and IP 65 rated linear vapor tight offering selectable lumens and CCT's with a 120-347V driver.

**ProLine®**

### PRC

NSF, IP65 and Wet rated high bay offering universal 120-347V, selectable lumens and CCT's, field-installable sensors and accessories.

**ProLine®**



## Restrooms

Restroom lighting from Current ensures easy installation and maintenance, minimizing downtime and keeping your projects on schedule. With controllable settings and built-in emergency capabilities, our lights provide the reliability and flexibility you need to meet every client's expectations.



### LBP

Lensed troffer with selectable lumens and CCT's, recessed or surface mounting and wireless Daintree control options.

### ProLine®

### LVT

Lensed troffer with selectable lumens and CCT's, recessed or surface mounting and wireless Daintree control options.



# EVOLVE

## Area/Site

With all the traffic from employee vehicles and delivery trucks, Current ensures your exterior and parking lot is well-lit to meet recommended light levels, enhancing safety and visibility during evening and overnight hours.

Our sign lighting offers a crisp, clean look that elevates your brand. For delivery trucks, well-lit docks are easier to find and navigate. For your employees and customers, an illuminated parking area reduces fender benders and minimizes theft risks.

*Enhance efficiency even more with wireless lighting controls.*



## EALS

The EALS is ideal for commercial property site-lighting with various mounting options, up to 30,000 lumens and a robust design that allows flexibility.

## EALP

The EALP offers a variety optical and lumen packages, with three color temperatures and multiple mounting options for ultimate application flexibility.

## E2SD

The Evolve® E2SD LED Security Light is optimized for customers seeking a solution in outdoor work yards, roadside, suburban developments and rural areas.

## ERLS

The Evolve® LED Roadway ERLS Setback Luminaire utilizes an advanced LED reflective optical system combined with multiple lighting distributions, mounting options and the ability to tilt. ERLS offers performance in a diverse set of applications ranging from interstates, roadways and parking lots.



## Floodlighting

Current's state-of-the-art flood lighting solutions enhance visibility and safety, creating a well-lit environment that reduces accidents and boosts productivity. With better lighting, workers can perform their tasks more efficiently, fostering a secure and effective workspace.

By choosing Current flood lighting, contractors can ensure their clients' facilities meet industry standards and are optimized for peak performance. Our advanced lighting technology offers improved visibility and safety, giving everyone peace of mind.



### EFMH

The EFMH is a medium output line of Hazardous Rated flood lights offering world class performance and durability for industrial, indoor or outdoor applications.

### EFHH

The EFHH is a high output line of Hazardous Rated flood lights offering world class performance and durability for industrial, indoor or outdoor applications.

### EFH

The EFH offers world class performance and durability. Ideal for traditional flood solutions like building facade, billboard, warehouse docks and freight yards.

### EFM

The EFM is our mid-lumen option for flood lighting built for durability. Ideal for general flood lighting and designed to replace up to a 400W HID fixture.

### EFC

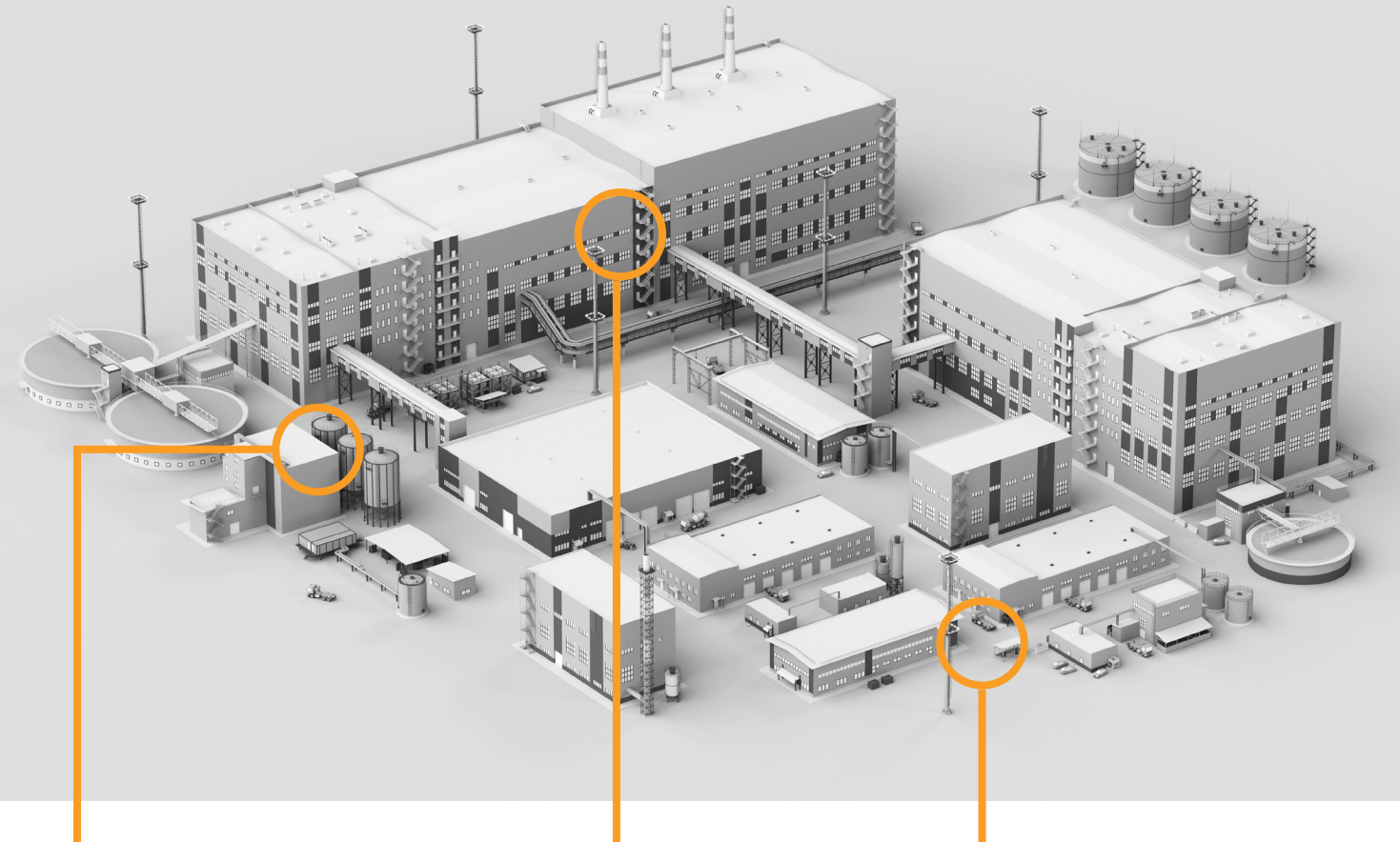
The EFC Compact Flood Light is a replacement for 50W to 150W HID general purpose flood luminaires offering significant energy savings with a long-life LED light source.



## Controls & Software Solutions

LED fixtures by Current, help you go with the ever-changing flow of business. Part of a total lighting solution that provides unparalleled quality, efficiency and savings, our comprehensive system includes indoor, outdoor and high bay fixtures with Daintree Wireless Controls already integrated. That means the advanced technology sensors are built-in for reduced installation labor and a world of functionality options. Choose from three levels of control capability with **Daintree One**, **Daintree EZ Connect** and **Daintree Networked**. It's the system that lets you choose the degree of control you want now, with the option to upgrade in the future.

## Daintree® One



Daintree Enabled  
Hazardous Fixtures

Daintree Enabled  
Indoor Fixtures

Daintree Enabled  
Outdoor Fixtures



Simple → Scalable → Flexible

For locations that don't require lighting coordination and communication, **Daintree One** offers single fixture controls for each luminaire. Whether it is a small room or a warehouse Daintree One is our most simple and cost-effective solution.

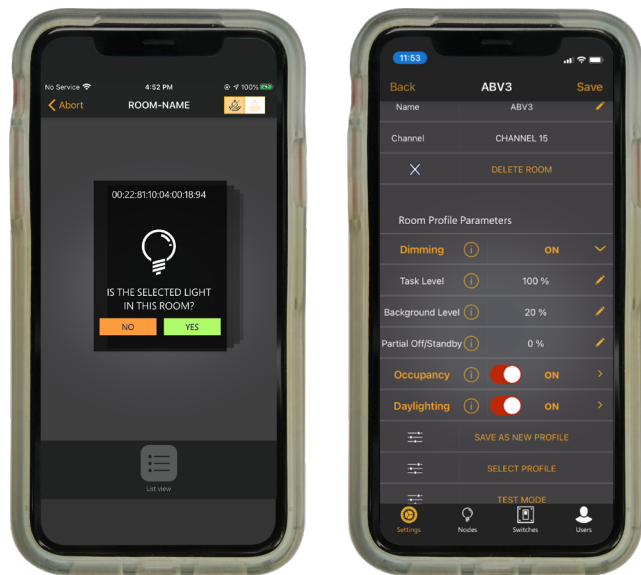
- **Simplicity:** Integration with fixtures reduces deployment complexity.
- **Upgradable:** The Daintree ONE platform can be upgraded to Daintree Networked.
- **Independent Control:** Each sensor can be controlled independently.
- **Pre-Programmed:** Sensors are pre-programmed at the factory, reducing install time.
- **Dynamic:** Sensor responds to both occupancy, as well as daylight.



# Daintree® EZ Connect

For indoor locations in need of a contractor friendly, easy-to-install system, Daintree EZ Connect is our mobile app-based wireless lighting controls system. The app provides zonal, room-based control of lighting fixtures, saving installation time and expertise required to commission the lighting fixtures.

- **Easy Deployment:** Mobile app simplifies the commissioning process.
- **Zoned Communication:** Sensors allow lighting to work in concert based on occupancy and daylight.
- **Integrated Fixture Solution & Room Based Control:** Customize the lighting parameters to the task that is being performed.
- **Code Compliant:** Program the sequence of operations requirements.
- **Maintenance Free:** Sensors are integrated into many Current fixtures and self-powered wireless switches do not require the use of batteries, eliminating the need for maintenance scheduling.



## Daintree® EZ Connect

Daintree Wireless Controls sensors can be ordered pre-installed in indoor fixtures or Albeo high bay fixtures with Daintree EZ Connect functionality so contractors can quickly commission commercial rooms or zones on the Daintree EZ Connect app.

The Daintree EZ Connect app is available for download on the Apple® App Store.



## Integrated Daintree® | EZ Connect Sensors



### WIZ20

The WIZ20 is a wireless occupancy sensor and ambient light sensor on the Daintree EZ Connect platform that integrates into many Current light fixtures.



### WWD2-2 Wall Control

Battery-powered, wireless dimmable wall switch that provides lighting control on the Daintree EZ Connect platform.



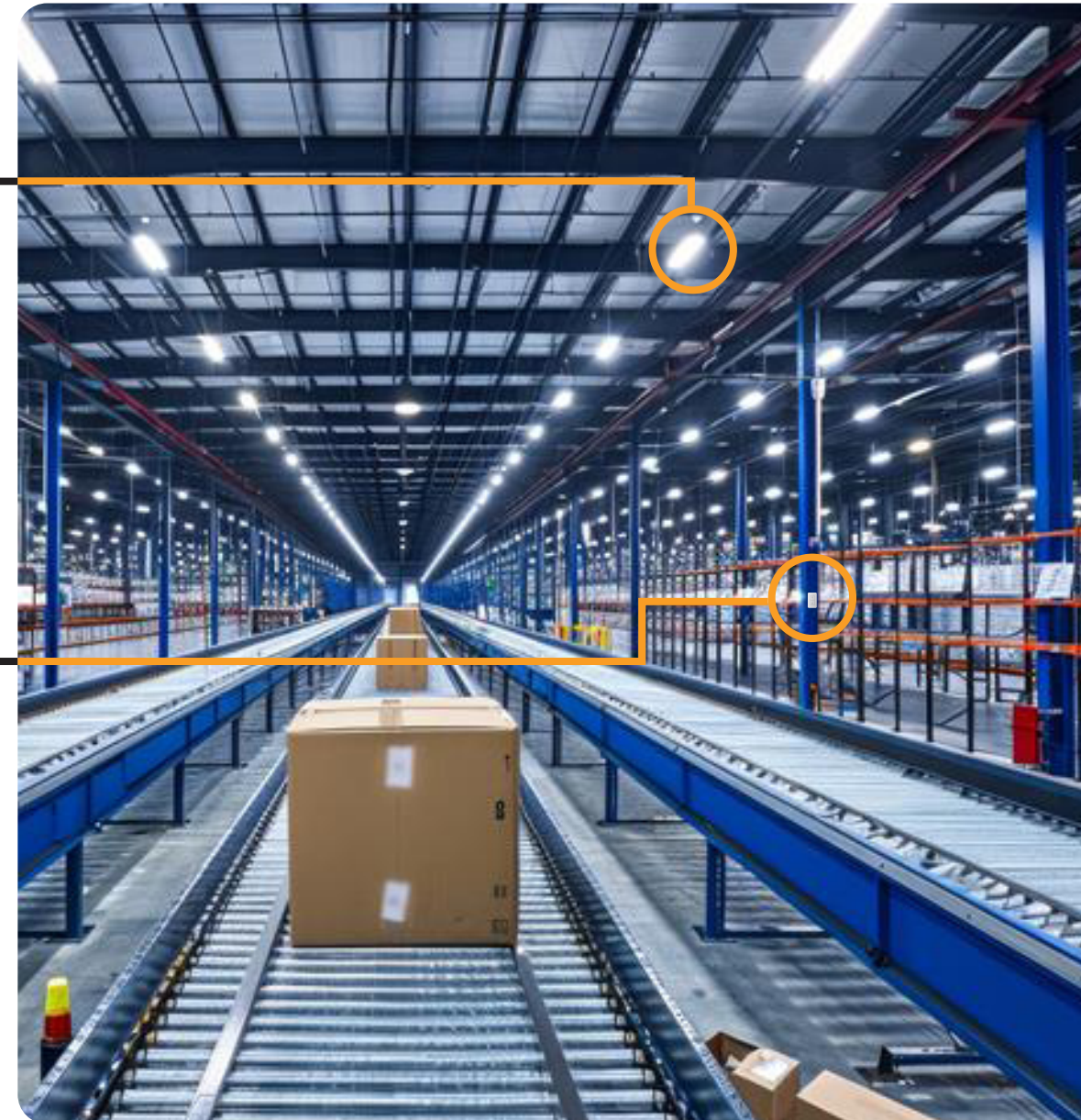
### WOS3-PC

Easy to retrofit, battery operated occupancy & daylight sensor



### WA210-PM

Single, dual, & 3-channel Room Controller with Class 1 or 2 dimming configuration





The Daintree Controls Software (DCS) system is a comprehensive industrial facility lighting management platform designed to optimize operations, enhance energy efficiency, and streamline control across various systems. This advanced solution offers real-time monitoring, data-rich management, and graphical visualization of energy consumption patterns, tailored specifically for industrial environments.



### Energy Savings and Efficiency:

Reduce lighting consumption by up to 70% especially when integrated with Building Management Systems (BMS) like HVAC, plug load control, and refrigeration units.



### Enhanced Productivity:

Better lighting conditions improve employee comfort and productivity during demanding tasks like inventory management or manufacturing



### Improved Safety and Visibility:

Enhanced lighting quality improves visibility in industrial environments, reducing workplace accidents and improving productivity



### Data-Driven Insights:

Advanced analytics offer actionable insights into space utilization, energy performance, and maintenance needs, helping businesses make informed decisions



### Ease of Use and Deployment:

Web-based software provides a user-friendly interface for managing lighting and other systems from a single platform

## Daintree Controls Software (DCS)

### Simplified System Management:

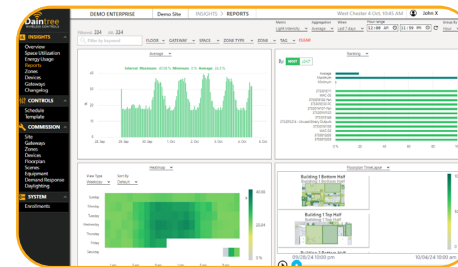
The user-friendly interface with profiles streamlines setup, monitoring, and control of your lighting system.

### Improved Space Utilization:

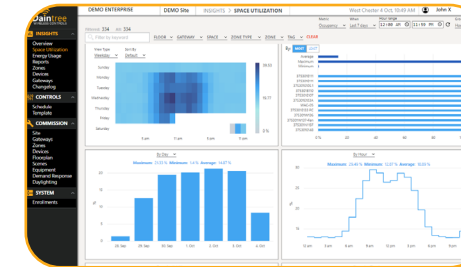
Analyze energy use patterns to understand space occupancy and optimize resource allocation.

### Data-Driven Decision Making:

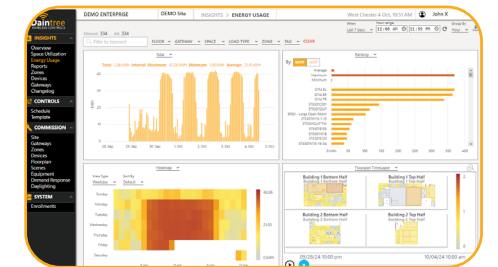
Make informed decisions regarding lighting strategy and infrastructure upgrades.



*Comprehensive Reports*

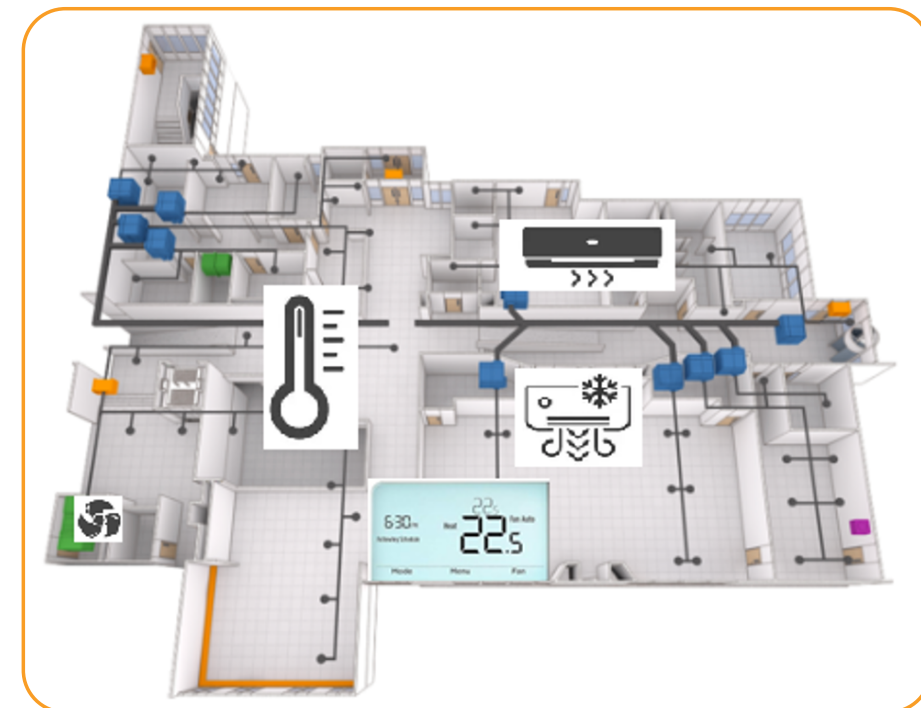


*Space Utilization*



*Energy Usage*

**Beyond Lighting Control:** Connect with various building systems like HVAC, fans, and water heaters, creating a comprehensive Internet of Things (IoT) solution for increased building automation and energy efficiency.





# Always On.

At Current®, we're inspired by the people who design, craft, live, work & play in spaces. Our award-winning family of brands is dedicated to offering bold integrated solutions, while providing the essential tools for designing connected lighting environments, both indoors and out.

Only Current can provide reliable performance, responsive service, and the uncompromising quality you expect from an industry leader every time, always.

## Our Vertical Markets



### Commercial

Stores, Offices, Hotels, Supermarkets, Restaurants, Healthcare, Education



### Industrial

Manufacturing Centers, Warehouses, Food Processing Plants



### Municipal

Roadways, Residential Streets, Shared Spaces



### Specialty

Signage, Transportation, Rail, Refrigerated Display Lighting

## Our Solutions



### LED Lighting

Optimize utilities to end excess energy spending, promote safety and improve aesthetics



### Controls, Sensors & IoT Solutions

Improve space utilization and increase productivity, and find actionable insights with IOT



### Energy Management Systems

Establish more sustainable energy practices across an enterprise

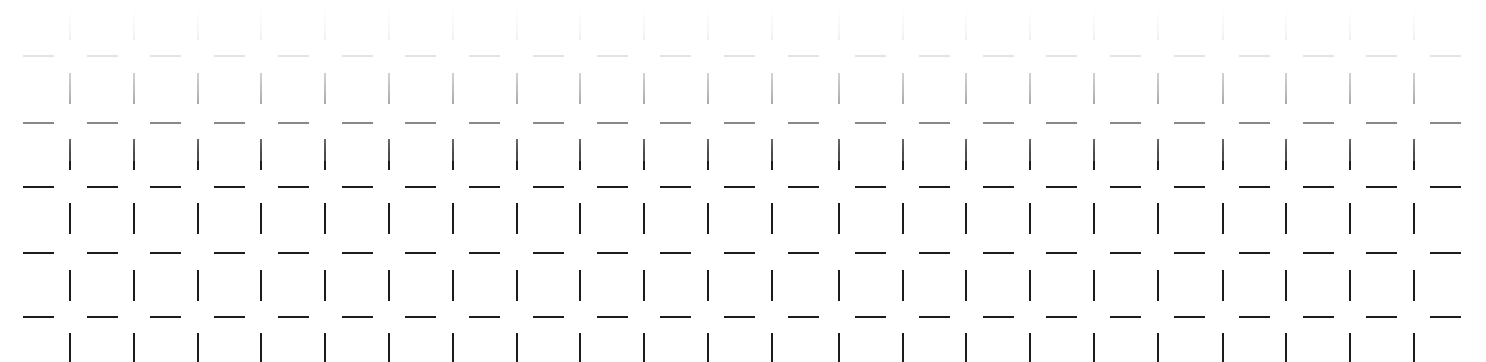
# Current

## Industry-leading portfolio of innovative product and tech brands.



Current's GLI Brands portfolio of products represents a collection of lighting and control's most respected commercial brands, ranging from indoor to industrial, outdoor to roadway, specialty, signage, and more.

The GLI Brands portfolio is built upon storied innovation, quality and reliability - a complete package ready to fulfill the needs of any commercial project.







ALBEO

DAINTREE WIRELESS CONTROLS

EVOLVE

GE LAMPS

GTX

IMMERSION

LIGHTGRID

LIGHTSWEEP

LUMINATION

TETRA

CONTACT US

[www.led.com/contact-us](http://www.led.com/contact-us)

SCAN TO LEARN MORE  
ABOUT INDUSTRIAL SPACES



**Current - GLI Brands**

25825 Science Park STE 400  
Beachwood, OH 44122-7392

[LED.com/brands/albeo](http://LED.com/brands/albeo)

© 2024 Current Lighting Solutions, LLC. All rights reserved. Information and specifications subject to change without notice. All values are design or typical values when measured under laboratory conditions.

(Rev 12/20/24)

CUR\_GLI\_Industrial\_Brochure\_R01

---