

Daintree Controls Software (DCS)

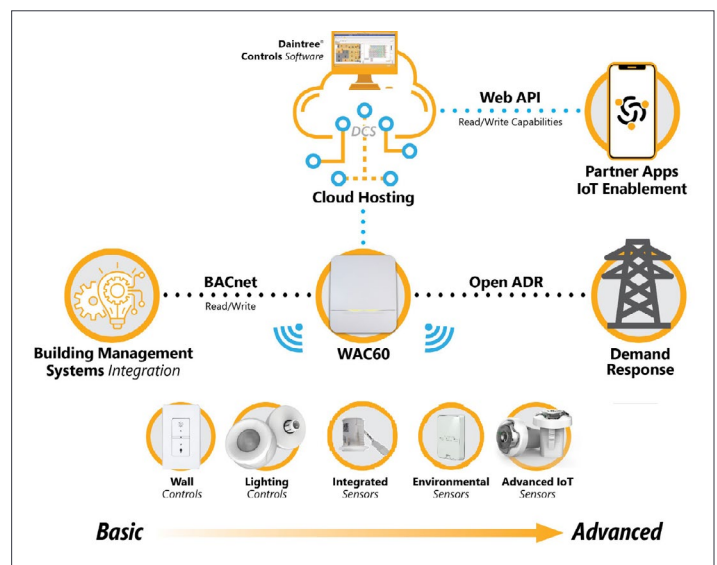
SIMPLE, SCALABLE, FLEXIBLE



The Daintree Controls Software (DCS) system is a comprehensive platform for optimizing building operations and enhancing energy efficiency, featuring real-time monitoring, data-rich management, and graphical visualization of energy consumption patterns. It offers easy setup for efficient lighting control, remote access for convenient management, and ensures data security and compliance with energy codes. The system's scalability and flexibility allow for integration with other building management systems and enable IoT capabilities, making it a future-proof solution for smart building management.

Top Features

- **HVAC Controls – Environmental Sensors**
HVAC zone report lists the setpoints, interior/exterior temperature, occupancy status and system operation mode: heating/cooling
- **Energy Metering – Power Meter Integration**
Reducing energy cost is a primary tool of any facility management plan. Using 3-phase power meters, DCS will log and display the following energy parameters: Power usage kW, Energy usage in 15 min interval– kWh, Reactive power – kVAR, & Power factor
- **System Reports**
 - a. Energy Reporting
 - b. People Counting / Static & Threshold Counting
 - c. Space Utilization
 - d. Zone Status & Device Status Reporting
- **Device Monitoring – Troubleshooting & Commissioning**
A full range of powerful functionality is accessed through these tabs. Get the information you need to commission, monitor and fix issues with your various devices. It's a seamless way to manage essential details.
- **BACnet Integration with BMS (Building Management System)**
Enhanced efficiency and improved monitoring - share occupancy data, CO2, Temperature, Humidity, Water leak detection and Air Quality with other BMS systems using the BACnet protocol.



Features continued next page

DCS offers several advantages (over CSM)

Simplified System Management:

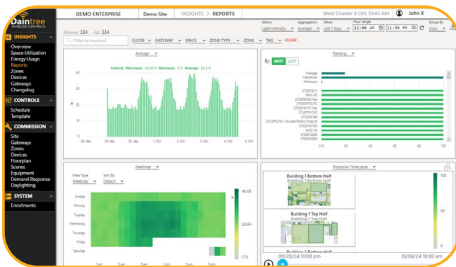
The user-friendly interface with profiles streamlines setup, monitoring, and control of your lighting system.

Improved Space Utilization:

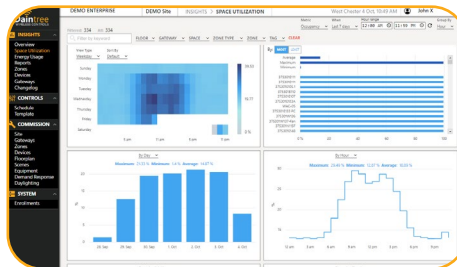
Analyze energy use patterns across different areas to understand space occupancy and optimize resource allocation.

Data-Driven Decision Making:

Gain valuable insights from detailed reports, allowing you to make informed decisions regarding lighting strategy and infrastructure upgrades.



Comprehensive Reports



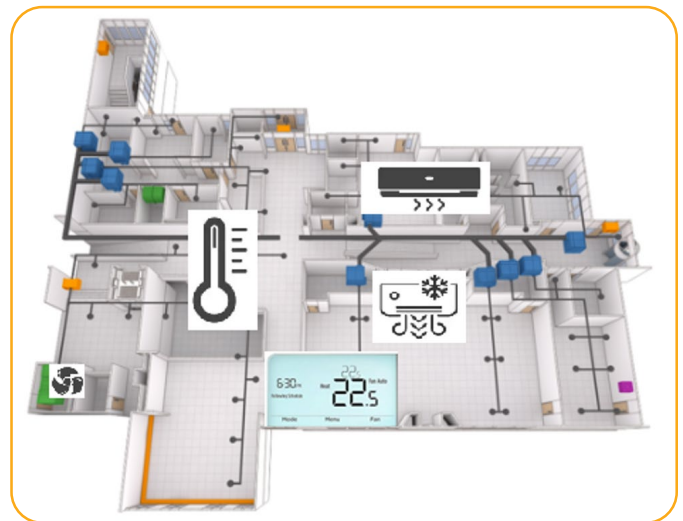
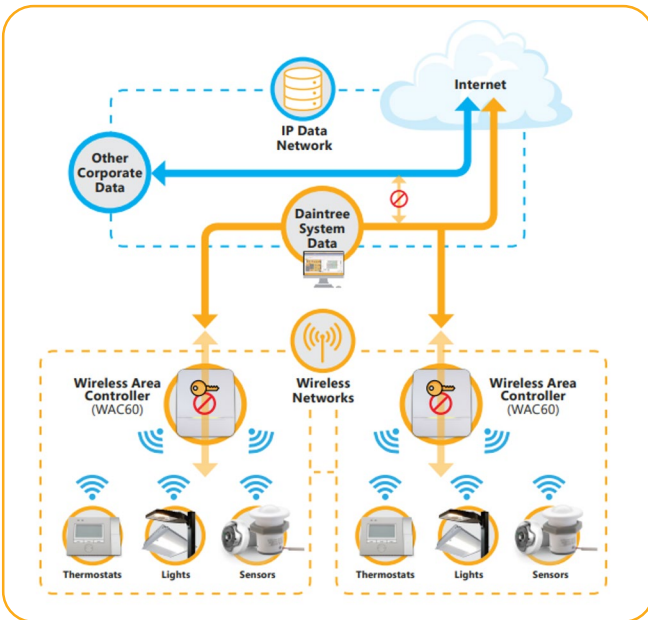
Space Utilization



Energy Usage

Future-Proof Technology: DCS operates on an open-standard platform, enabling seamless integration with additional Daintree compatible devices and applications as your needs evolve.

Beyond Lighting Control: Daintree Networked, with DCS as its software backbone, extends beyond just lighting. It can connect with various building systems like HVAC, fans, and water heaters, creating a comprehensive Internet of Things (IoT) solution for increased building automation and energy efficiency.



BACnet Integration with BMS (Building Management System): BACnet integration enables seamless connectivity between DCS and leading Building Management Systems allowing centralized monitoring of critical data such as lighting, CO2, temperature, humidity, and water leak detection enhancing interoperability and operational efficiency.

New and Improved Features with DCS

Full-Service Support

- Maximize energy performance across lighting and BMS Controls

Multi-Site Controls

- Consolidate campus or entire portfolio onto a single platform

Enhanced Security

- View the Cyber Security Overview Brochure [here](#)
- SAML single sign-on (SSO) login method offering more secure authentication (with a better user experience) than usernames and passwords
- Flexible user permissions per sites and access level
- History change log – records user activity within system

Global Scheduling

- Same schedule can be applied to multiple zones simultaneously

Customizable Alarms

- Custom Email Alarms and Notifications based on user subscriptions
- Zone water leak
- Zone temperature (too hot, too cold, setpoint unreachable)

BACnet BMS Integration

- BACnet server implementation at WAC level to provide zone level monitoring and control

OpenADR Support for Lighting

- WAC supports the OpenADR integration with utility companies
- Curb energy usage based on predefined settings

Public APIs

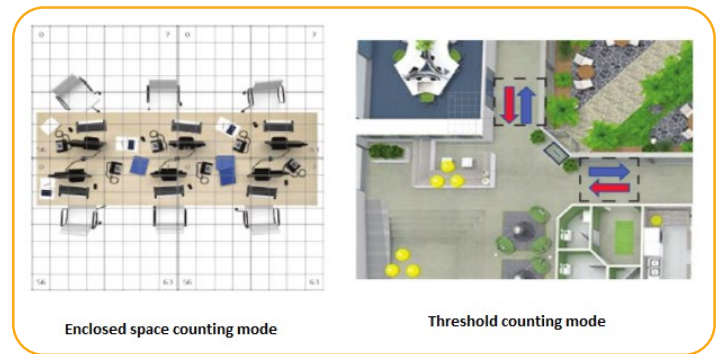
- Leverage data with 3rd party applications to increase productivity

Inter-WAC communication (i.e. master switch)

- Inputs can be associated with zones across entire facility

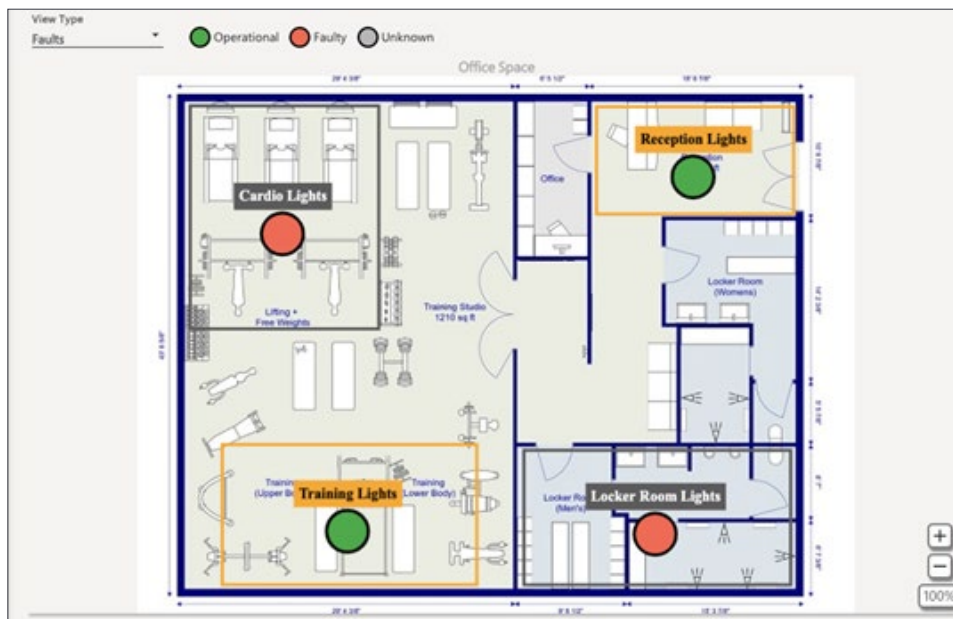
People Counting

- Closed space counting mode: sensors work together to provide near real-time seated people counts in seated environment
- Threshold mode - installed at the entrance/exit of a zone, monitoring foot traffic in & out of that space



Enhanced Interactive Floor Plans

- Interactive floor plans and animated graphics to display occupancy, energy usage or light level variations for 7 or 30 days



Interactive floor plans

Features in Fall Release – 1.8.2 (Q4)

Alert Dashboard

- Dashboard displays alerts for all sites within an enterprise

Enhanced Alarms

- Daily/weekly alert summary emails
- Additional HVAC alarms
- Air quality alert

OpenADR Support Extended to HVAC

- Expanding OpenADR support to include HVAC controls in addition to our existing lighting support

HVAC support for optimal start Feature

- Anticipating the heating or cooling needs of a space by starting equipment early enough to reach setpoint just at the beginning of scheduled occupancy

Name	Tags	Address	City	Region	Gateways Offline	Devices Offline	Zone Alerts
ACME site	Retail, Test	3517 Warner Blvd, Burbank, CA 91505, United State	Burbank	Los Angeles	3	0	2
Goliath National Bank	Bank	20 W 34th St., New York, NY 10001, United States	Manhattan	New York	0	25	1
Marie's Geek Shop	Retail, 42	742 Evergreen Terrace, Springfield, United States	Gotham City	Middle-Earth	0	0	0
Marie's Magic Shop	Café, Retail, Test	1940 Rue Onésime Gagnon, Lachine, QC H8T 3M6	Montréal	Québec	1	2	4
Marie's Other Shop	Retail	1 Rue des Carrières, Québec, QC G1R 4P5	Québec	Québec	0	0	0
Marie's Vegan Shop	Café, Retail, Solar panels	160 St Viateur St. E, Montreal, Quebec H2T 1A8	Montréal	Québec	0	0	0
Miskatonic University	Campus, Solar panels	600 Angell St, Providence, Arkham, RI 02906, United States	Arkham	Massachusetts	0	8	0
Prod. Inc. Head Office	Office, Test	11 Wall St, New York, NY 10005, United State	Manhattan	New York	1	4	1
Prod. Inc. Warehouse	Warehouse	3916 4th Ave, Brooklyn, NY 11232, United States	Brooklyn	New York	0	0	0

Alarms Dashboard

Alert Type	Location	Detection count	Total active duration	Last occurrence	State
Water Leak	First Floor / Bathroom / Water detection	1	1 hour, 29 minutes	June 5, 2024, 1:10 PM	Active
Zone Device Communication Fault	First Floor / Entrance area / Lighting	28	2 hours, 42 minutes	June 5, 2024, 11:22 AM	Inactive
Temperature Too High	First Floor / Store / Temperature	1	2 hours, 13 minutes	June 5, 2024, 1:02 PM	Active
Temperature Too High	First Floor / Back store / Temperature	3	1 day, 4 hours, 2 minutes	June 5, 2024, 10:10 AM	Active
Gateway Offline	First Floor / Gateway	4	2 days, 7 hours, 39 minutes	June 4, 2024, 11:38 PM	Active
Cooling Setpoint Unreachable	First Floor / Back store / Temperature	1	4 days, 6 hours, 45 minutes	June 1, 2024, 8:30 AM	Active
Zone Device Communication Fault	First Floor / Store / Temperature	2	6 day, 8 hours, 12 minutes	May 31, 2024, 2:51 PM	Active
Temperature Too High	First Floor / Bathroom / Temperature	1	8 days, 2 hours, 56 minutes	May 28, 2024, 1:34 PM	Active
Zone Device Communication Fault	First Floor / Shop / Store / Lighting	5	18 hours, 56 minutes	May 27, 2024, 10:10 AM	Inactive

Site Alerts