



EAP1

Area/Site Multi-Purpose Luminaire



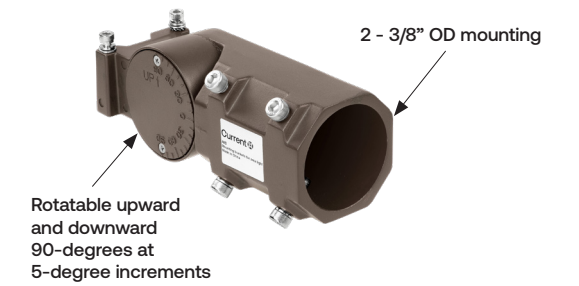
EVOLVE

mounting versatility

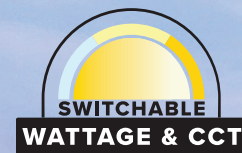


EAP1150WLSCSKSF

Rotatable upward and downward 90-degrees at 5-degree



Evolve's EAP1 Site luminaire slipfitter mounting option designed for 2 - 3/8" pole or tenons.

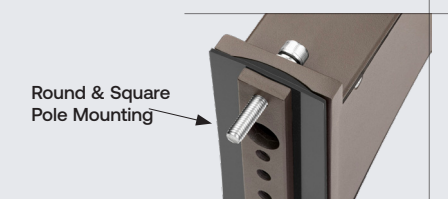
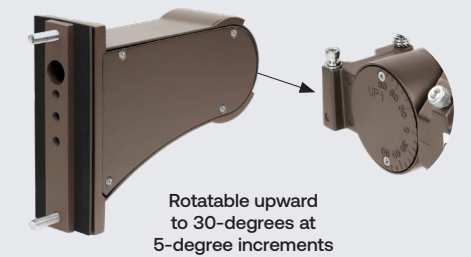


Evolve's **EAP1** Site luminaire is available in two mounting options (Arm and round Slipfitter) features a dense optical array with interchangeable optics which provides reduced pixilation and increased visual comfort without compromising performance. Switchable wattage and CCT allows you to customize your lighting design to meet application requirements in the field.



EAP1150WLSCSARM

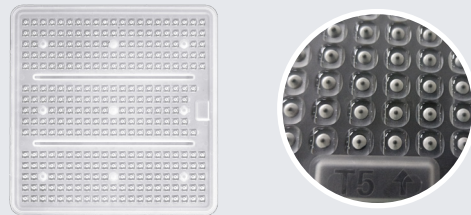
Rotatable upward to 30-degrees at 5-degree increments



construction



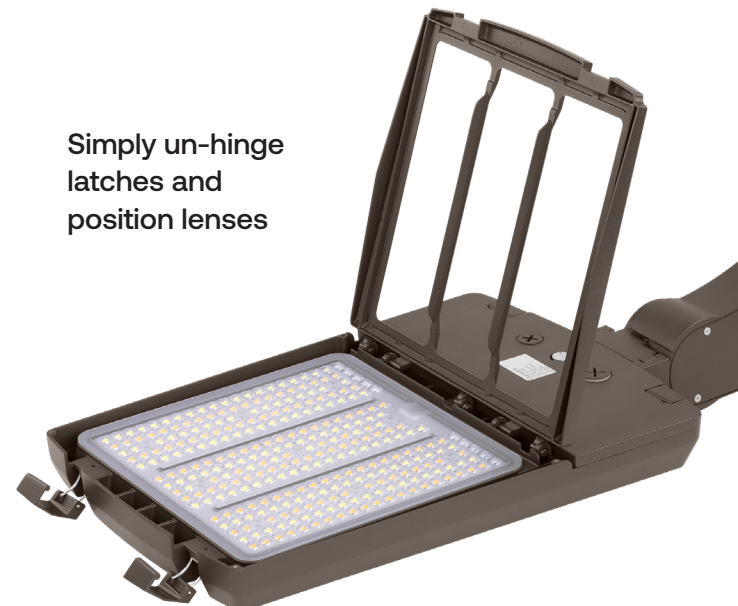
Type 5
Embossed distribution type



Type 4
Embossed distribution type



Simply un-hinge
latches and
position lenses

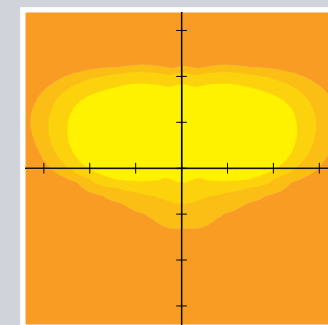


performance

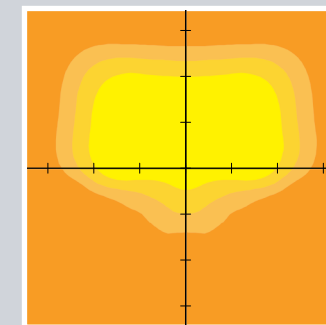
Interchangeable Type 3, Type 4 or Type 5 distributions lenses for easy on-site distribution changes. All three optics are included with every unit.

Type III
Type IV
Type V

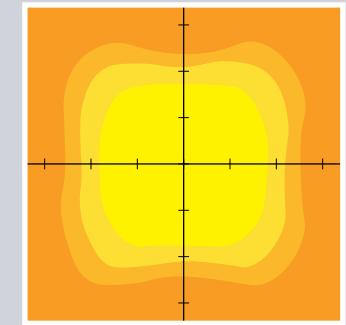
The **EAP1** is available with three distinct distribution patterns to illuminate a variety of applications. Featuring advanced optics which maximizes target zone illumination with minimal losses at the house-side, reducing light trespass issues. This outstanding optic control simplifies layouts and installations, reduces pole count, energy consumption; lowers installation costs and improves visual acuity.



Type III



Type IV



Type V



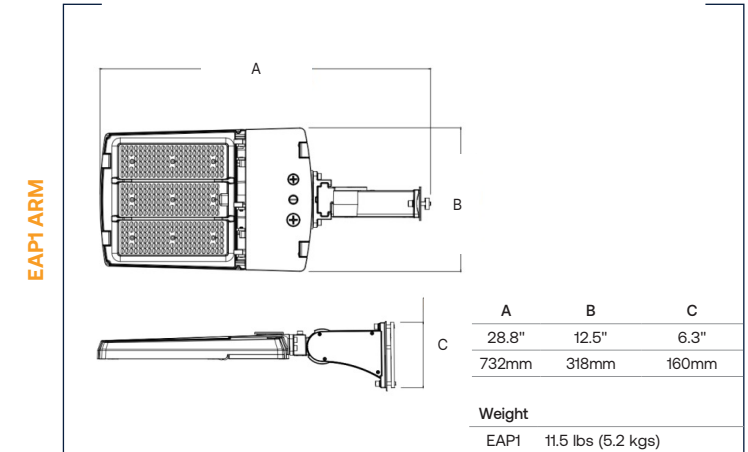
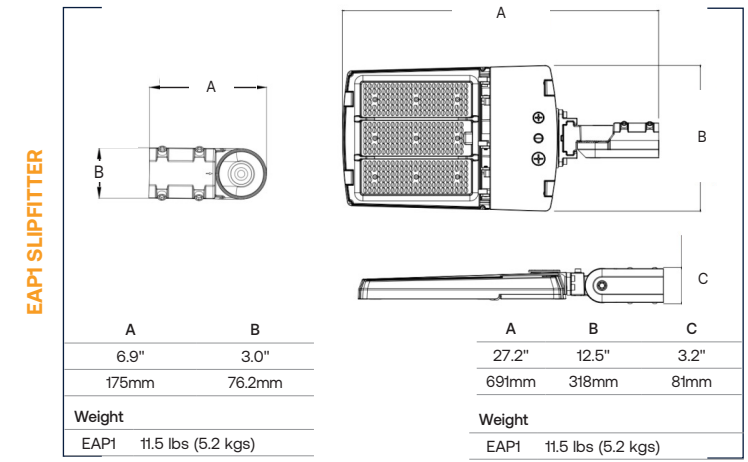
EAP1150WLSCSKSF



EAP1150WLSCSARM

ordering

dimensions



Stock Ordering Information

CATALOG NUMBER	INCLUDES	LUMENS	WATTAGE	CCT	VOLTAGE	DISTRIBUTION	FINISH
EAP1150WLSCSARM	Arm Mount	13,032 - 22,944	85-150	3000K 4000K 5000K	120-347V	Type 3, Type 4, Type 5	Dark Bronze
EAP1150WLSCSKSF	Mast Arm Fitter	13,032 - 22,944	85-150	3000K 4000K 5000K	120-347V	Type 3, Type 4, Type 5	Dark Bronze

Accessories (ordered separately)

CATALOG NUMBER	DESCRIPTION
HB03DPR	Field Installed Occupancy and Daylight Sensor
HB03DPR-REMOTE	Programming Remote for HB03DPR Sensor (Typically one required per site to program the sensors)
SGS-HSS	Field Installed House Shield
241-C-DBT	Flat surface bracket (Wall Mount Accessory. Compatible with slipfitter mounting only.)

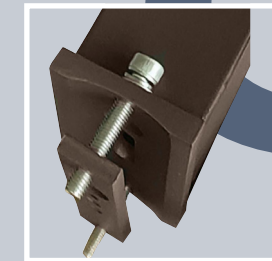
mounting

finishing



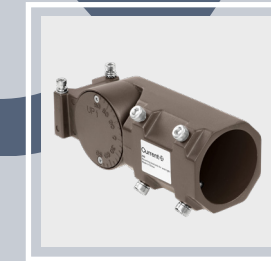
Arm Mount

Fixture ships with integral arm for ease of installation. Compatible with Evolve drill patterns.



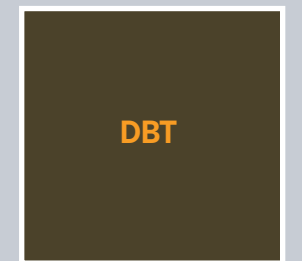
EAP1 Arm

for flat surface (wall), square pole mounting (with gasket), round pole mounting for 4" to 5"OD (remove gasket).



EAP1 Slipfitter

Fits 2-3/8" OD arms Roadway



DBT

Dark Bronze Matte Textured

Current Lighting Solutions, LLC

701 Millennium Blvd.
Greenville, SC 29607

www.LED.com

© 2024 HLI Solutions, a division of Current, Inc. All rights reserved. Information and specifications subject to change without notice. All values are design or typical values when measured under laboratory conditions.

09/25/2024
EVO_EAP1_brochure_R01

Current 