

EVOLVE

STREET/ROADWAY

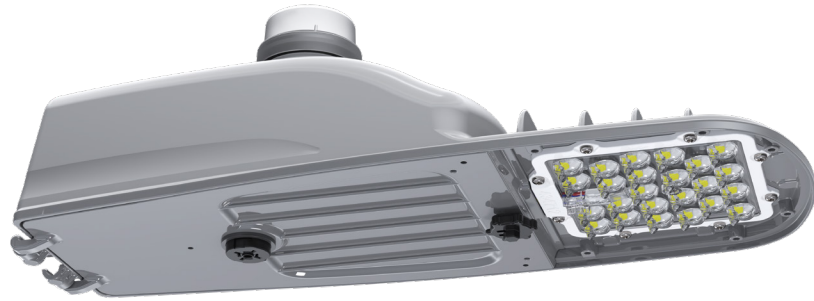


LED Roadway Luminaire

ERNC

Current 

LED Roadway Luminiare



EVOLVE ERNC LED Roadway luminaire utilizes precise LED optical design and directional lens placement to maximize light delivery where it is needed.

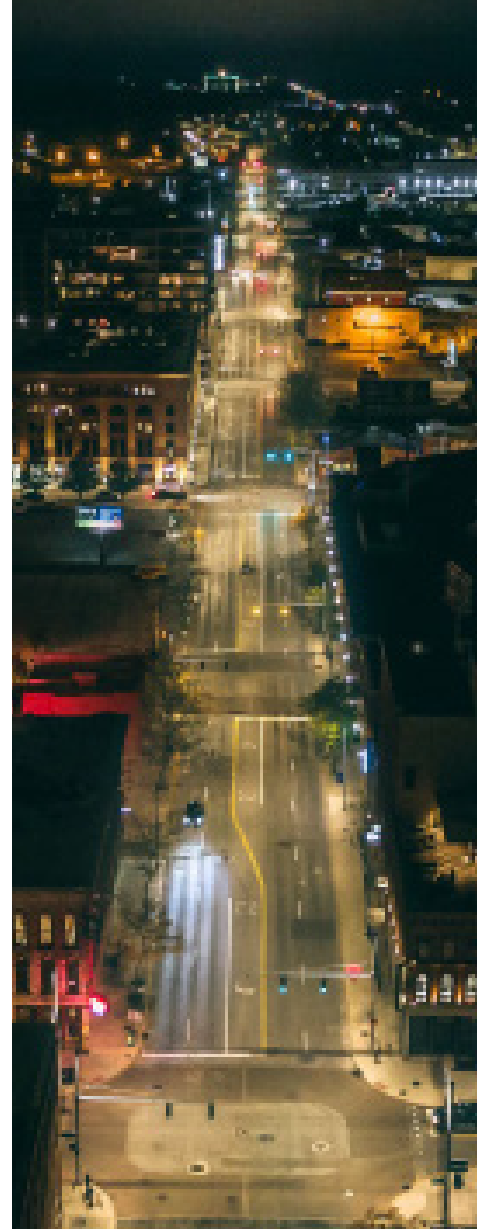
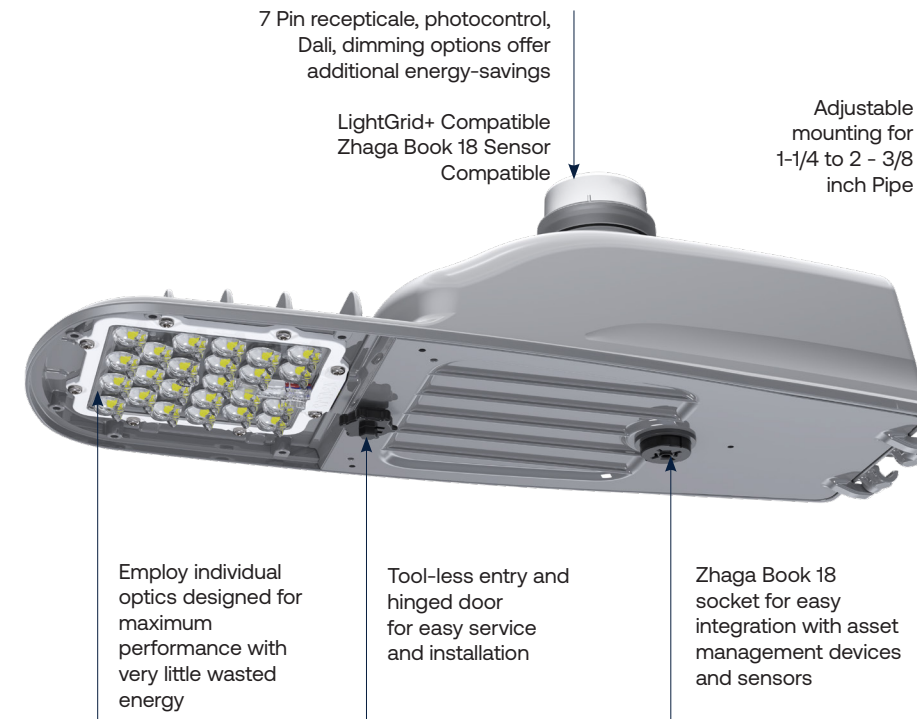
These optics feature LPW benefits and deliver optimum light levels for significant performance as well as energy savings.



- Competitive uniformity and pole spacing
- Uses up to 50% less energy of an equivalent HID fixture at full brightness
- Performs virtually maintenance-free (L96 at 60,000 hours, projected per IESNA TM-21-11)
- Saves energy and reduces annual maintenance costs
- Up to 13K lumens

Performance

Lumens	2,600 - 13,000
Distribution	Type II, Type III, Type IV, Type V
Efficacy	(LPW): 113 - 173
CCT	(K): 2700, 3000, 4000
CRI (Min)	70



Applications



- Municipal + Roadways
- Residential Streets
- Shopping Collector Roads
- Parking Lots
- Industrial Parks
- Bridges

House Side Shields options



HOUSE SIDE SHIELDS ERNC Shields	
Product Code: 93315972	Description: ELSHS-ERNC-BLCK
Product Code: 93315973	Description: ELSHS-ERNC-GRAY

STREET SIDE SHIELDS Left Shield, Right Shield or Front (Streetside) Shield	
Product Code: 93316242	Description: ELSLRF-ERNC-BLCK
Product Code: 93316243	Description: ELSLRF-ERNC-GRAY





Current - GLI Brands

25825 Science Park
Beachwood, OH 44122

LED.com

© 2024 Current Lighting Solutions, LLC. All rights reserved. Information and specifications subject to change without notice. All values are design or typical values when measured under laboratory conditions.

(Rev 08/29/24)

OLP3239
