

Evolve[®]

Street/Roadway



LED Roadway Luminaire

ERNM

Current 

LED Roadway Luminiare



EVOLVE ERNM LED Roadway luminaire utilizes 2 LED optical array design and directional lens placement maximizes light delivery where it is needed.

These optics feature LPW benefits and deliver optimum light levels for significant performance as well as energy savings.



- Up to 26,000 lumen output
- Uses up to 50% less energy of an equivalent HID fixture at full brightness
- Zhaga Book 18 Sensor Compatible
- Saves energy and reduces annual maintenance costs
- Zhaga Book 18 Sensor Compatible

Performance

Lumens	8,624 - 26,000
Distribution	Type II, Type III, Type IV, Type V
Efficacy (LPW)	Up to 172
CCT (K)	2700, 3000, 4000
CRI (Min)	70

7 Pin receptacle, photocontrol, Dali, dimming options offer additional energy-savings
LightGrid+ Compatible
Zhaga Book 18 Sensor Compatible

Adjustable mounting for 1-1/4 to 2 - 3/8 inch Pipe

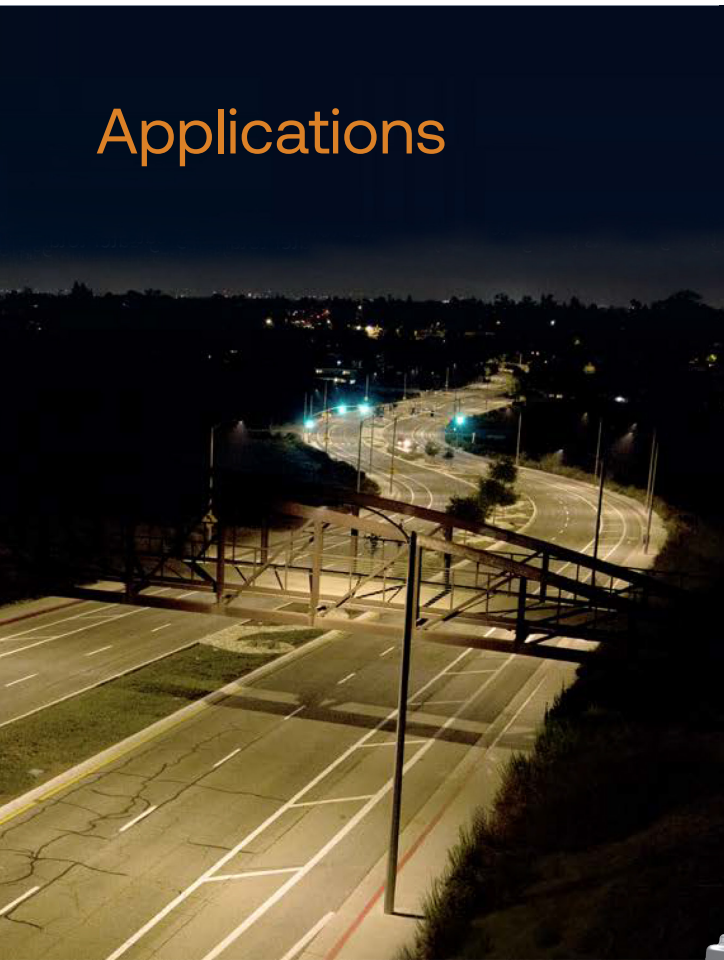
Employ individual optics designed for maximum performance with very little wasted energy

Tool-less entry and hinged door for easy service and installation

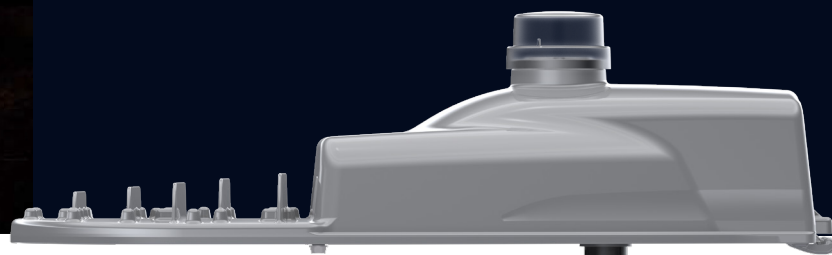
Zhaga Book 18 socket for easy integration with asset management devices and sensors



Applications



- Roadways
- Parking Lots
- Industrial Parks
- Collector Roads
- Municipal Areas
- Bridges



House Side Shields options

ERNM Left Shields		ERNM Right Shields	
Product Code	Description	Product Code	Description
93319084	ELSL-ERNM-BLCK	3319086	ELSR-ERNM-BLCK
93319085	ELSL-ERNM-GRAY	93319087	ELSR-ERNM-GRAY

ERNM House Side Shields		ERNM Front Shields	
Product Code	Description	Product Code	Description
93319069	ELSHS-ERNM-BLCK	93319082	ELSF-ERNM-BLCK
93319081	ELSHS-ERNM-GRAY	93319083	ELSF-ERNM-GRAY

Current

Current - GLI Brands

25825 Science Park
Beachwood, OH 44122

LED.com

© 2024 Current Lighting Solutions, LLC. All rights reserved. Information and specifications subject to change without notice. All values are design or typical values when measured under laboratory conditions.

01/29/25
OLP3249
