

## Evolve® Visual Comfort Lens

Visual comfort lens offers reduction of glare for Roadway lighting applications. The lens when used with Evolve's innovative reflective optic design minimized direct view of the light source. The visual comfort lens provides a non-pixelated appearance while taking advantage of the recessed LED arrays within the optic (or reflector). This further limits visibility of the LEDs from the ground level, minimizing glare.

Polar Plot Comparison



**ERL1 Clear Flat Lens**

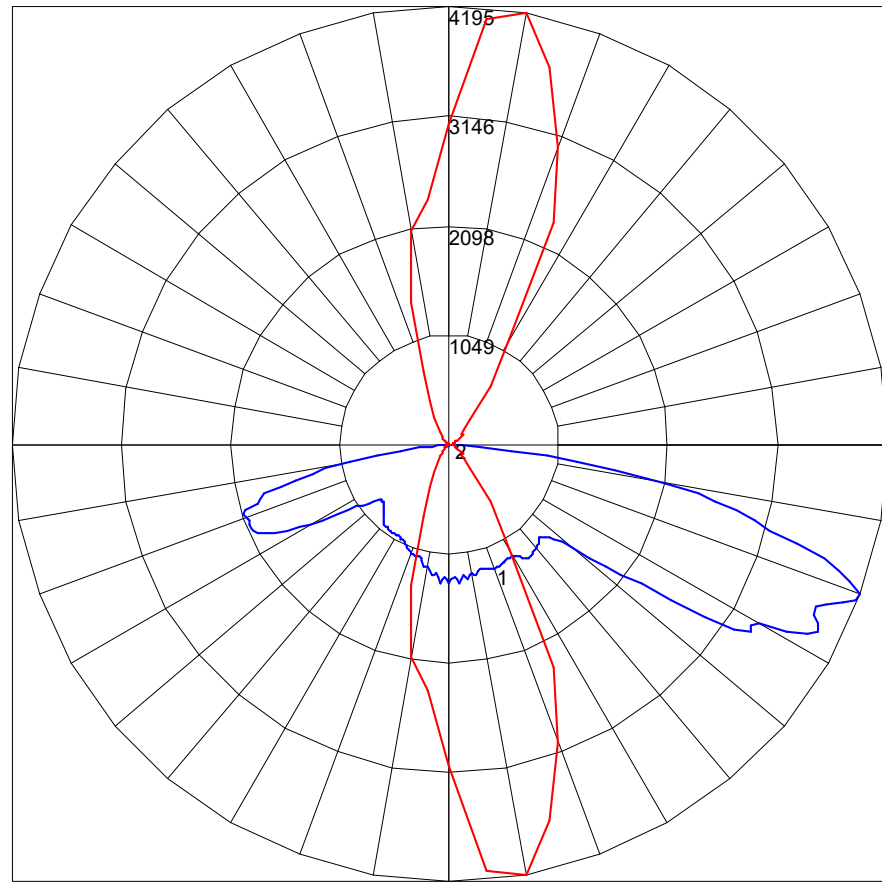
- 5000 output lumens (standard drive current)
- 4000K
- Max Candela 4195 at 80H and 70V
- Standard brightness to an observer



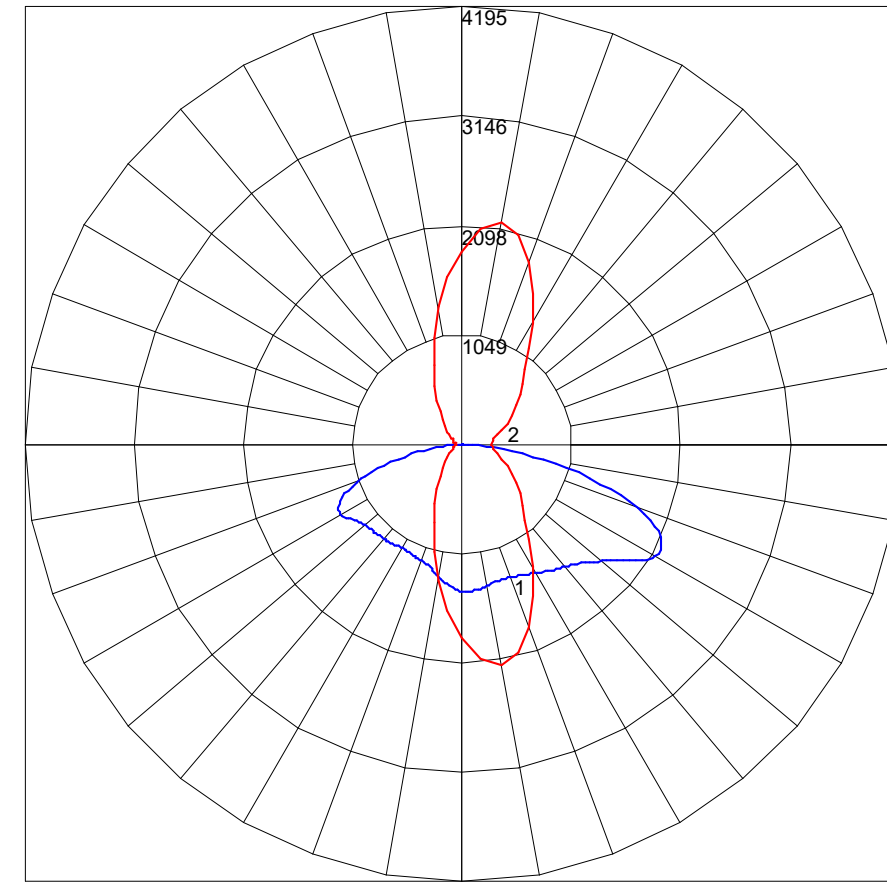
**ERL1 Visual Comfort Lens**

- 4650 output lumens (standard drive current)
- 4000K
- Max Candela 2183 at 80H and 62V
- Approximately 50% reduction in brightness to an observer

**A7 - Type II Clear Flat Lens**



**J7 - Type II Visual Comfort Lens**



### Isoline Comparison



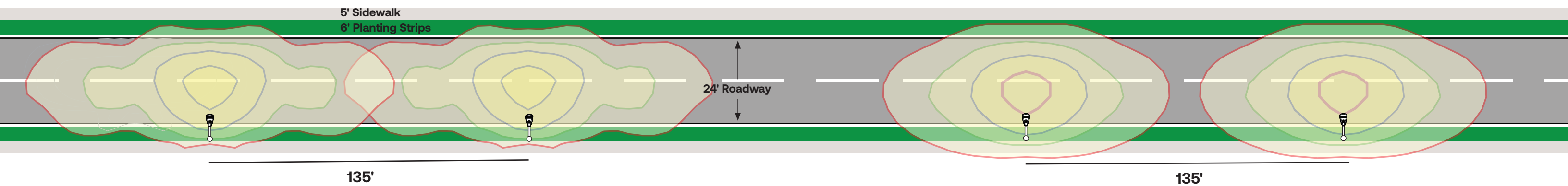
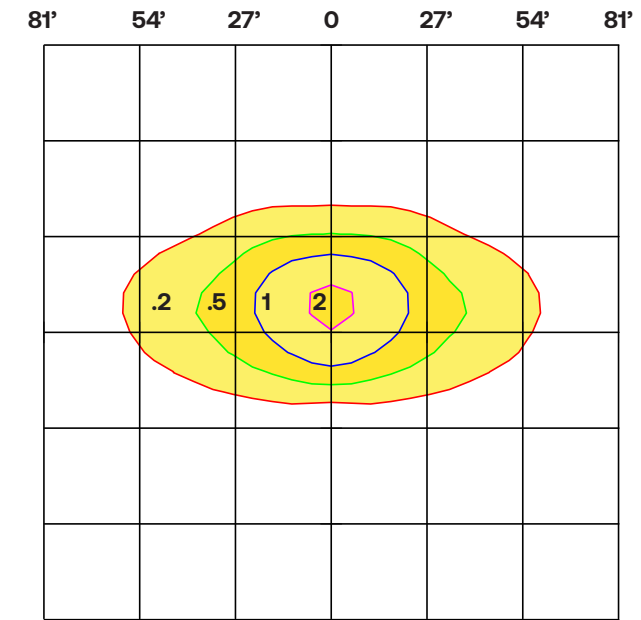
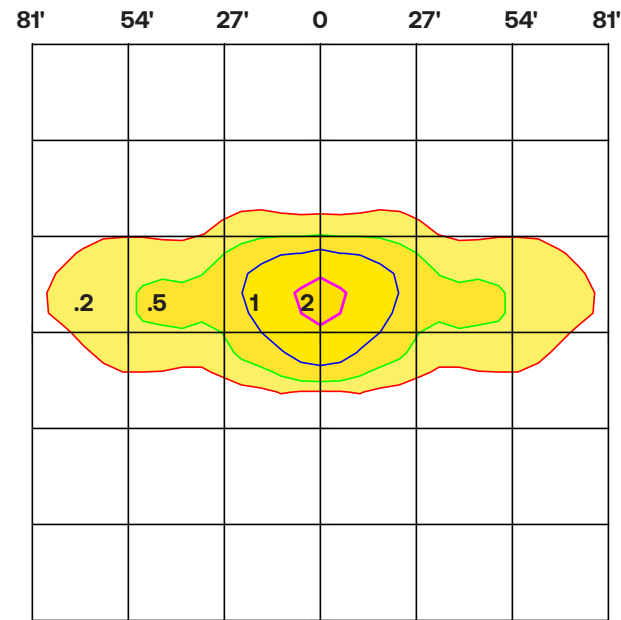
#### ERL1 Clear Flat Lens

- 5000 lumens
- Scale: 27 ft = 1 mounting height
- Light Loss Factor = 1



#### ERL1 Visual Comfort Lens

- 4650 lumens
- Scale: 27 ft = 1 mounting height
- Light Loss Factor = 1

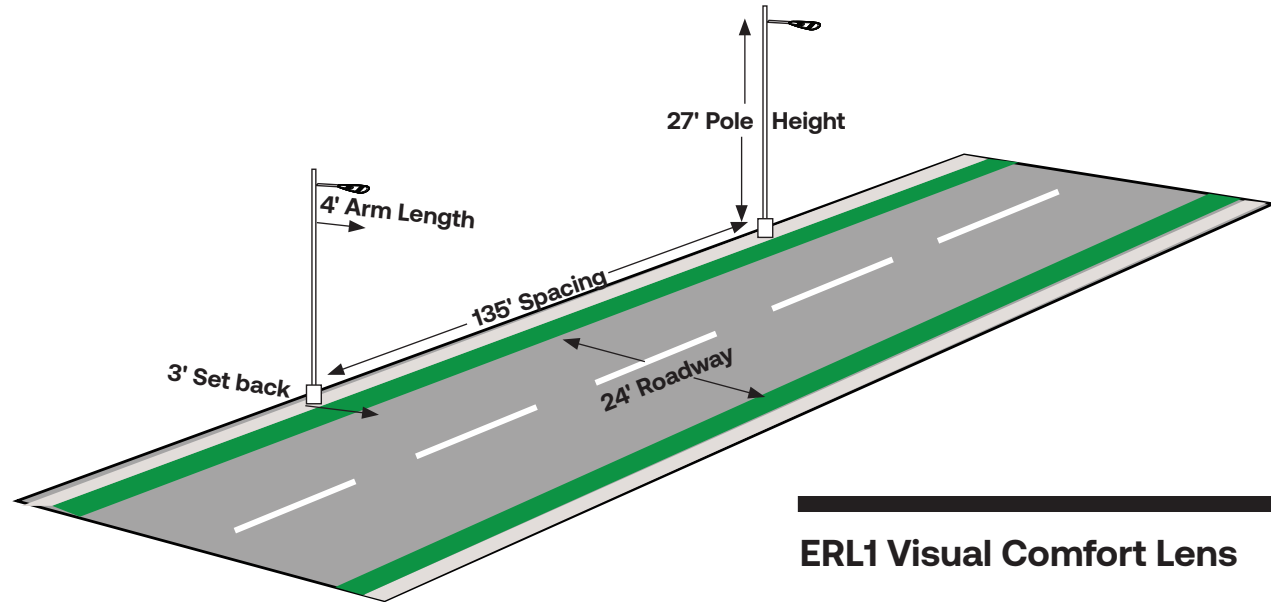


Application Comparison

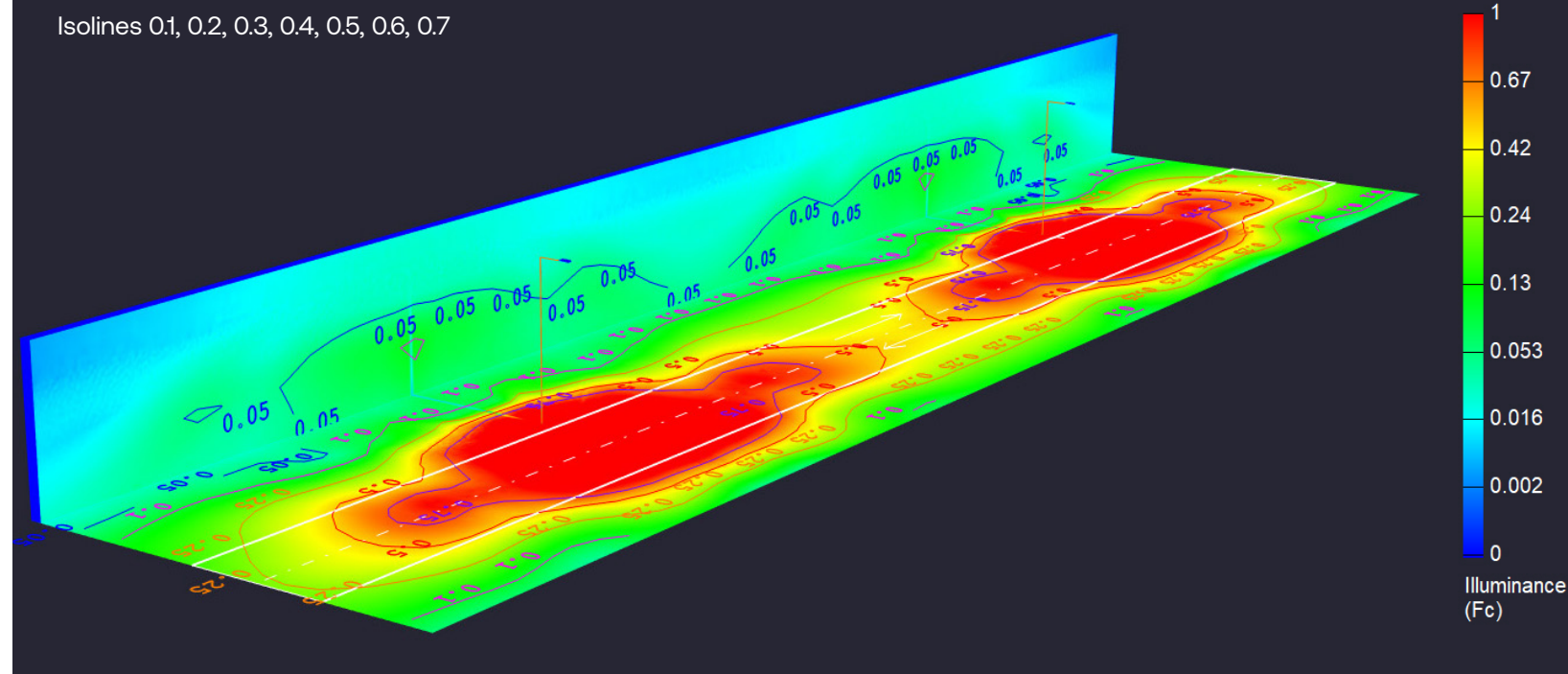


**ERL1 Clear Flat Lens**

- 5000 output lumens (standard drive current)
- 4000K CCT 70 CRI
- Reflective Optics
- Clear Flat Glass
- Meets RP-8, local road, high conflict



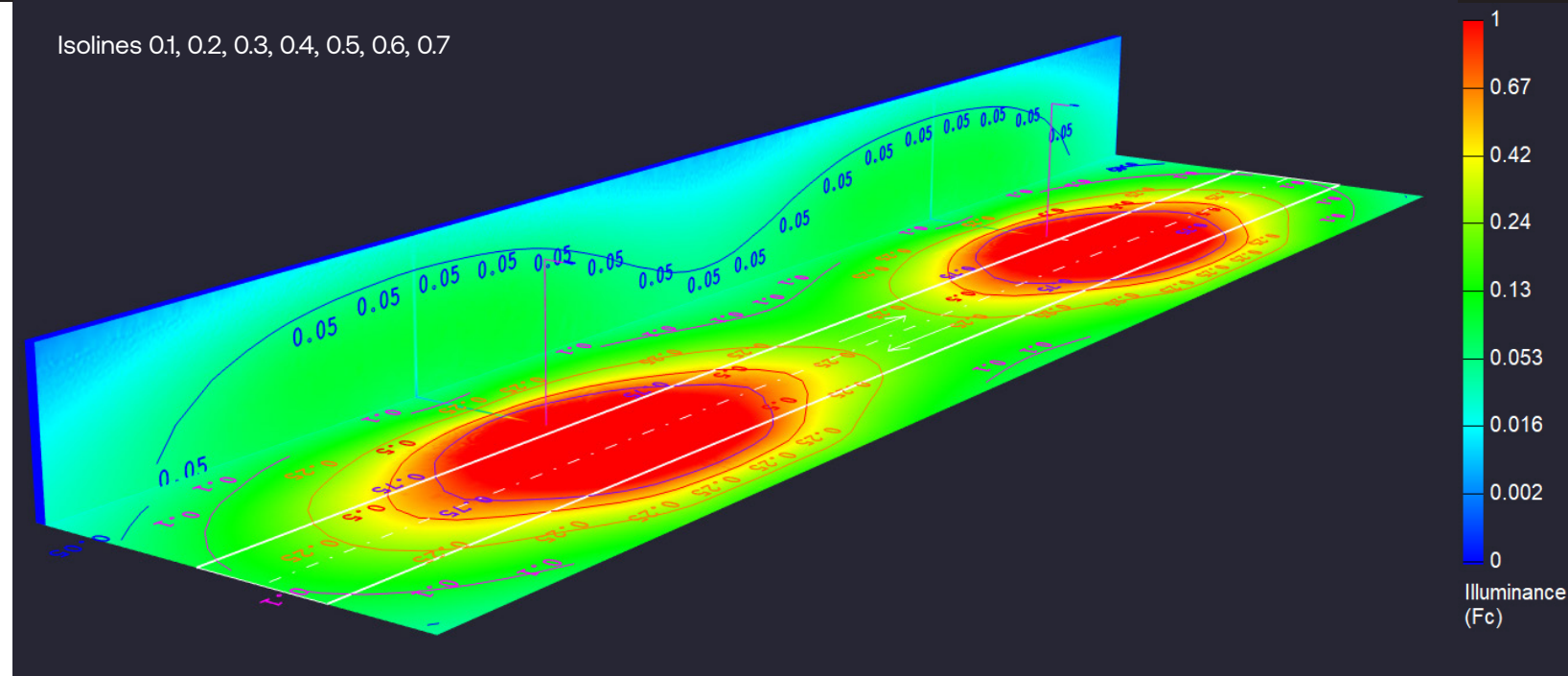
Isolines 0.1, 0.2, 0.3, 0.4, 0.5, 0.6, 0.7



**ERL1 Visual Comfort Lens**

- 4650 output lumens (standard drive current)
- 4000K CCT 70 CRI
- Reflective Optics
- Visual Comfort Glass (patterned diffuser)
- Meets RP-8, local road, high conflict

Isolines 0.1, 0.2, 0.3, 0.4, 0.5, 0.6, 0.7



**Current Lighting Solutions, LLC**

701 Millennium Blvd.  
Greenville, SC 29607

**[www.LED.com](http://www.LED.com)**

© 2025 GLI Solutions, a division of Current, Inc. All rights reserved. Information and specifications subject to change without notice. All values are design or typical values when measured under laboratory conditions.

September 19, 2025 2:54 PM  
Evolve Visual Comfort lens V6

