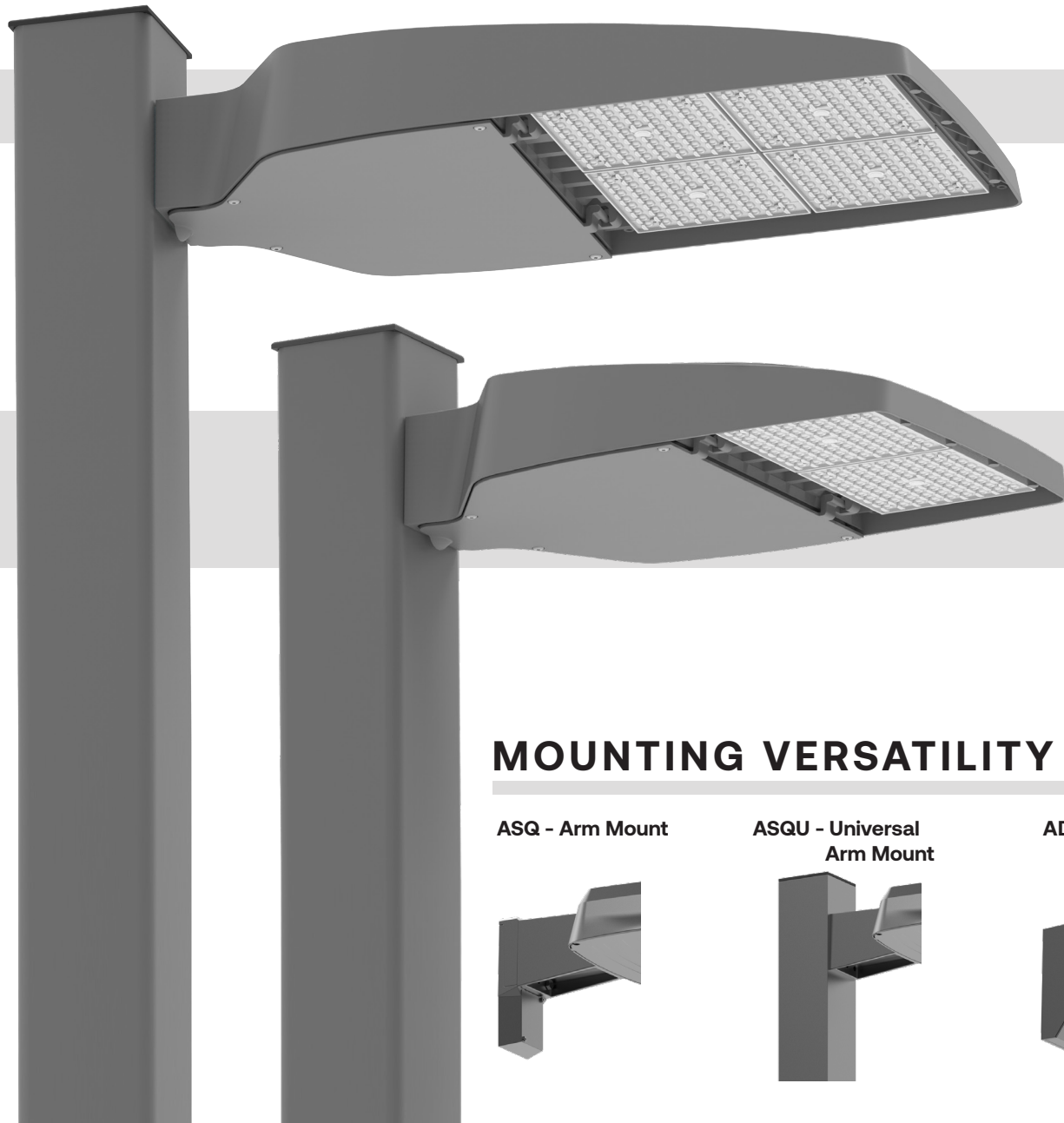


AIRO AREA/SITE



EXO's AIRO area/site family is available in two sizes as well as a variety of outputs allowing you to customize your lighting design to meet application requirements. With a new spin on a classic form, AIRO brings the traditional cobra head aesthetic into the next generation of LED lighting. AIRO features a dense optical array which provides reduced pixilation and increased visual comfort without compromising performance. Designed for sustained, long-term performance with advanced thermal management, an elegantly simple heat sink and industry leading surge protection.

VALUE + PERFORMANCE



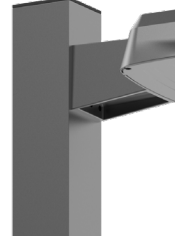
Size	AIRO Area/Site (ASL1)	AIRO Area/Site (ASL2)
Lumens	5,500–18,000	21,000–36,000
Watts	35–135W	145–255W
LPW	143	148
Mounting	Pole Arm, Mast Arm, Knuckle, Trunnion, Wall	Pole Arm, Mast Arm, Knuckle, Trunnion, Wall
CCT	3K, 4K, 5K	3K, 4K, 5K
Distributions	II, III, IV, V	II, III, IV, V
Surge Protection	20kA	20kA
Legacy Equivalence	100–400W	400–1000W

MOUNTING VERSATILITY

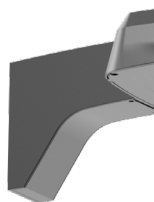
ASQ - Arm Mount



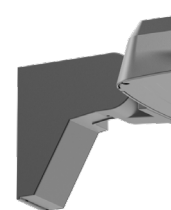
ASQU - Universal Arm Mount



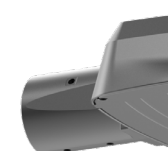
ADU - Decorative Upswept Arm



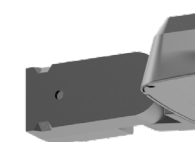
AAU - Adjustable Arm



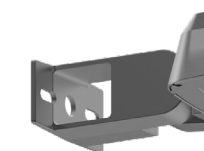
MAF - Mast Arm Fitter



T-Knuckle



T-Trunnion

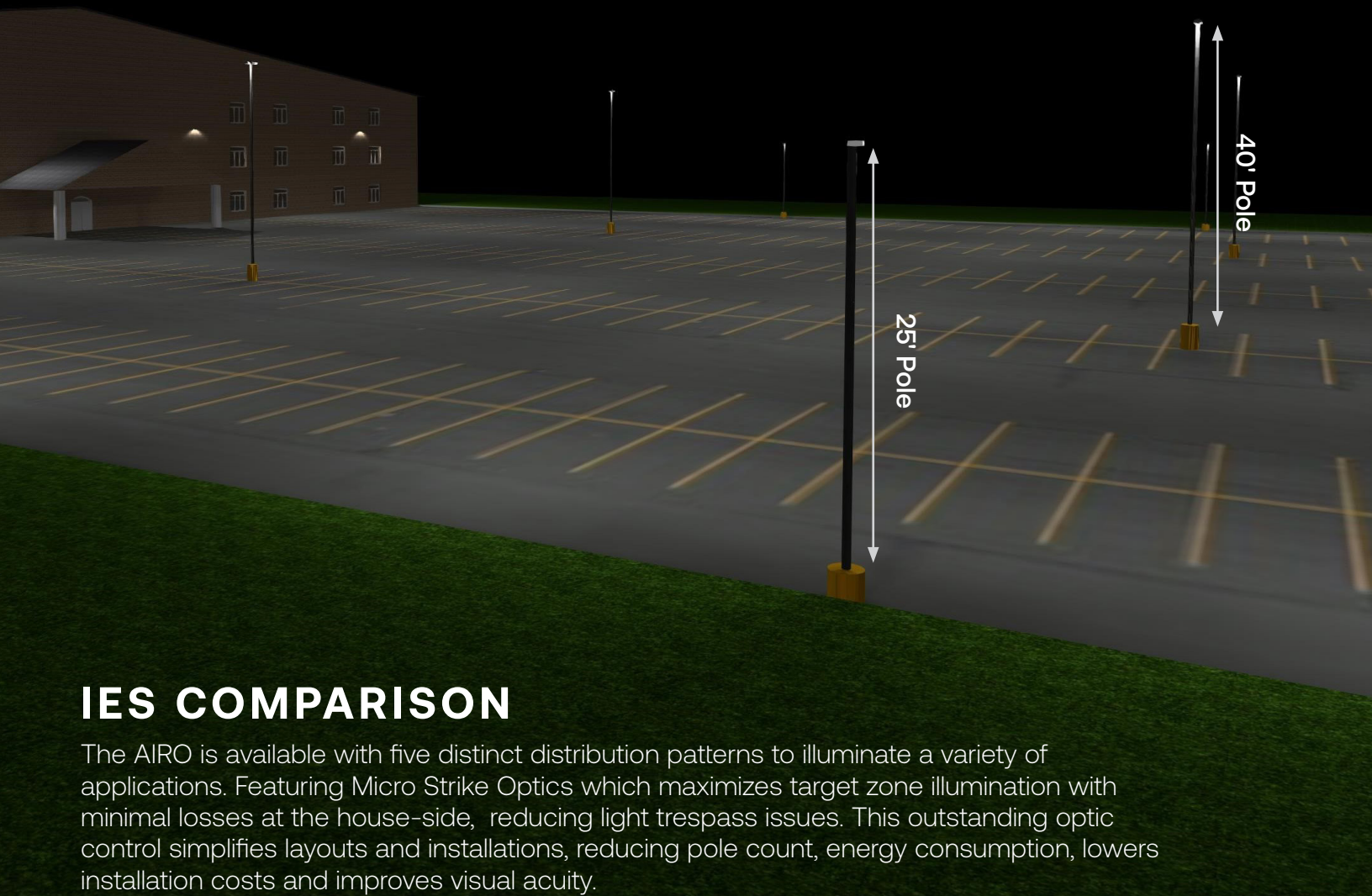


Wall Mount



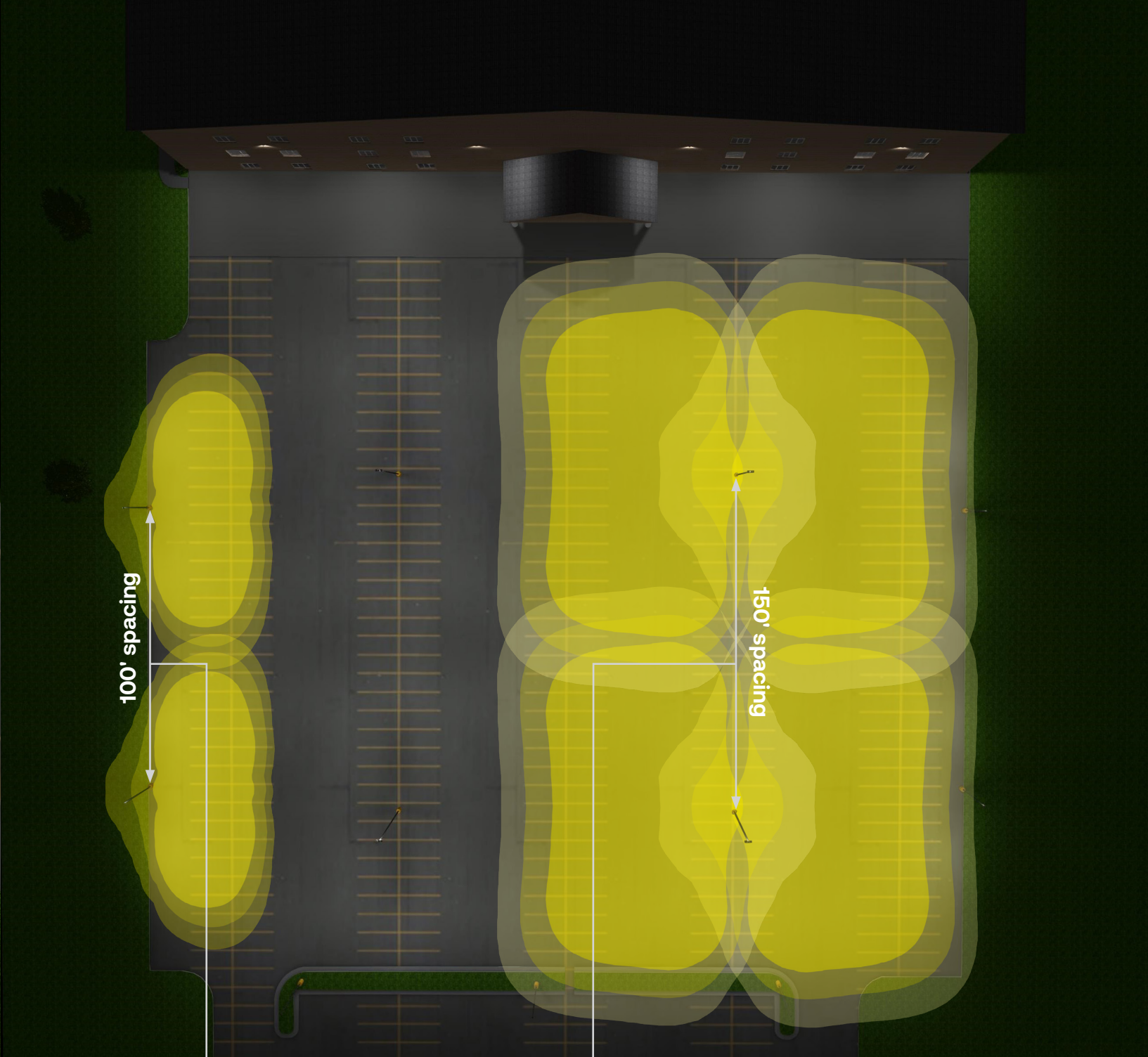
Consult specification sheet for each mounting option details

AIRO AREA/SITE PERFORMANCE



IES COMPARISON

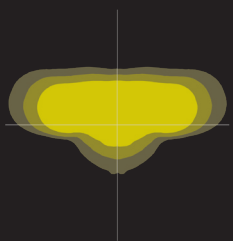
The AIRO is available with five distinct distribution patterns to illuminate a variety of applications. Featuring Micro Strike Optics which maximizes target zone illumination with minimal losses at the house-side, reducing light trespass issues. This outstanding optic control simplifies layouts and installations, reducing pole count, energy consumption, lowers installation costs and improves visual acuity.



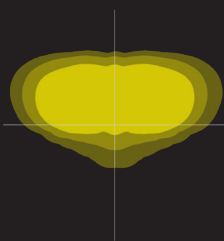
The 135W AIRO replaces 400W legacy luminaires and can be seen here on 25ft poles. The Type III distribution provides great spacing between poles and minimal backlight.

The 255W AIRO replaces 1000W legacy luminaires on up to 40ft poles. The Type IV distribution enhances uniformity by pushing light to the corners of the distribution where dark spots are most common.

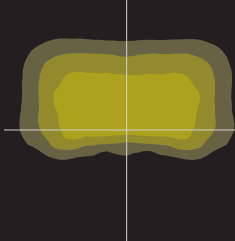
Type 2



Type 3



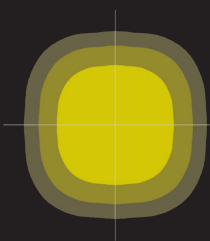
Type 4 Wide



Type 4 Forward



Type 5



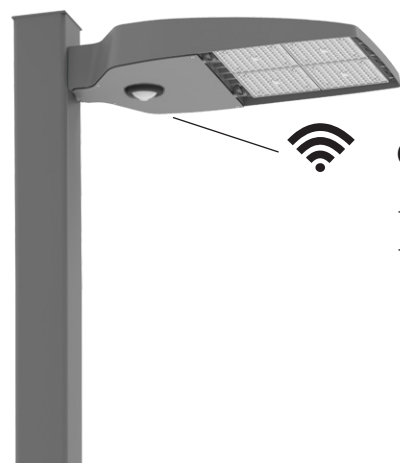
INTEGRATED CONTROLS

Controls in area/site applications save energy, extend luminaire life and allow customizable solutions. Sensors control light output based on area utilization and are used for energy savings and local code compliance.



NX Lighting Controls platform delivers a lighting control solution capable of seamlessly connecting exterior and interior applications.

- Standalone or networked fixture control
- Astronomical time schedules
- BACnet building networking
- Connects with indoor wired, wireless or hybrid networks
- Wireless setup via app
- Occupancy Sensor option dims product when space is not occupied



Occupancy Sensor

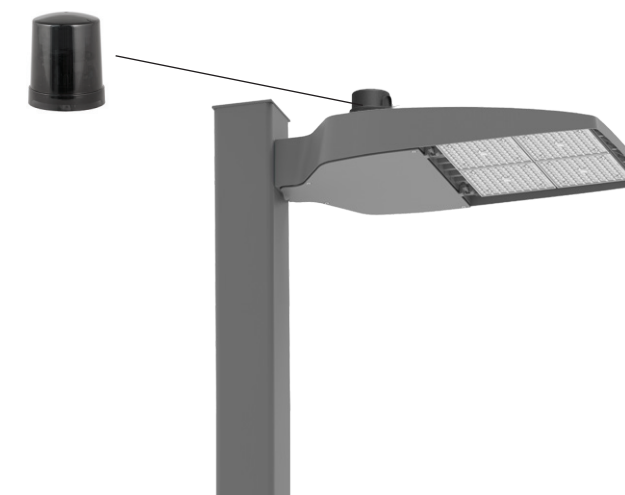
- Individual fixture control
- Dims product when space is not occupied



7-Pin Receptacle

- Compatible with 3-pin, 5-pin or 7-pin photocontrols
- Turns fixture on when sun sets, off when sun rises
- Wireless networked solution
- For use with a variety of control platforms

*Additional accessories required.



ORDERING GUIDE

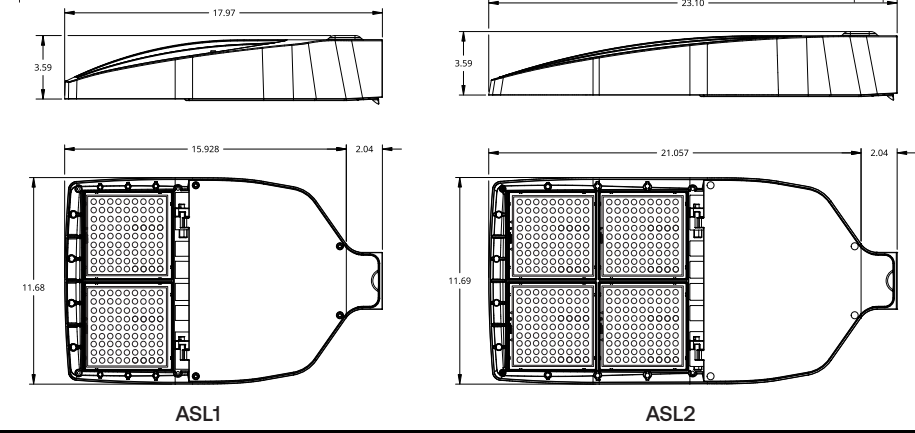
Gray Shading = Service Program Limit of 15 luminaires **QS10**

Example: ASL1-160L-70-3K7-2-UNV-A-BLT-7PRMD-40F

Series	# LEDs	CCT/CRI	Distribution	Voltage	Mounting
ASL1 ASL Microstrike Series	160L-35 5,500 lm	3K7 3000K, 70 CRI	2 Type II	UNV Universal 120-277V	FA Fixture Arm, B3 drill pattern
	160L-50 7,500 lm	4K7 4000K, 70 CRI	3 Type III	120 120V	A Arm mount for square pole/flat surface(S2 Drill Pattern) (Does not include round pole adapter)
	160L-70 9,000 lm	5K7 5000K, 70 CRI	4F Type 4F	208 208V	A_ Arm mount for round pole ⁵
	160L-100 12,000 lm		4W Type 4W	240 240V	ASQ Arm Mount for square pole, B3 drill pattern
	160L-115 15,000 lm		5QW Type 5QW	277 277V	ASQU Universal arm mount for square pole. Can be used with B3 or S2 Drill Pattern
	160L-135 18,000 lm			347 347V	A_U Universal arm mount for round pole ⁵
ASL2 ASL Microstrike Series	320L-145 21,000 lm			480 480V	AAU Adjustable arm for pole mounting (universal drill pattern)
	320L-170 24,000 lm				ADU Decorative upswept Arm (universal drill pattern)
	320L-185 27,000 lm				AD_U Decorative upswept arm mount for round pole ⁵
	320L-210 30,000 lm				MAF Mast Arm Fitter for 2-3/8" OD
	320L-235 33,000 lm				K Knuckle
	320L-255 35,000 lm				T Trunion

Network Control Options	
NXWS316F	NX Networked Wireless Enabled Integral NXSM2-LMO PIR Occupancy Sensor with Automatic Dimming Photocell and Bluetooth Programming ⁴
NXWS340F	NX Networked Wireless Enabled Integral NXSM2-HMO PIR Occupancy Sensor with Automatic Dimming Photocell and Bluetooth Programming ⁴
NXW3	NX Networked Wireless Radio Module NXRM2 and Bluetooth Programming, without Sensor ^{3,4}
Stand Alone Sensors	
7PR	7 Pin Receptacle
7PR-SC	7 Pin Receptacle with shunting cap
7PR-MD8F	7 pin receptacle with low voltage sensor at 8' mounting for external control accessory
7PR-MD40F	7 pin receptacle with low voltage sensor at 40' mounting for external control accessory
7PR-TL	7 Pin Receptacle with Photocontrol
Sensors	
BTS_F	Bluetooth Programmable, PIR Occupancy/Daylight Sensor, 360° lens ²⁴
BTSO_F	Bluetooth Programmable, PIR Occupancy/Daylight Sensor, 360° lens, up to 12' mounting height ³⁴

Options		Color	
F	Fusing ¹	BLT	Black Matte Textured
BC	Backlight Control	BLS	Black Gloss Smooth
SP	20kA & 10kV Surge Protector	DBT	Dark Bronze Matte Textured
CD	Continuous Dimming	DBS	Dark Bronze Gloss Smooth
		GTT	Graphite Matte Textured
		LGS	Light Grey Gloss Smooth
		LGT	Light Grey Matte Textured
		PSS	Platinum Silver Smooth
		WHT	White Matte Textured
		WHS	White Gloss Smooth
		VGT	Verde Green Textured
		Color Option	
		CC	Custom Color



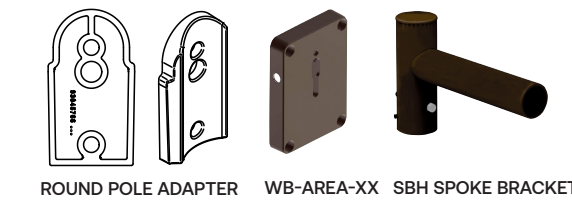
- Notes:
- 1 Must specify Voltage
 - 2 Replace "_" with "14" for up to 14' mounting height, "40F" for 15-40' mounting height
 - 3 Replace "_" with "12" for up to 12' mounting height
 - 4 Available 70W or higher only
 - 5 Replace "_" with "3" for 3.5"-4.13" OD pole, "4" for 4.18"-5.25" OD pole, "5" for 5.5"-6.5" OD pole

Weight	
ASL1	14.47 lbs (6.56 kgs)
ASL2	17.47 lbs (7.92 kgs)

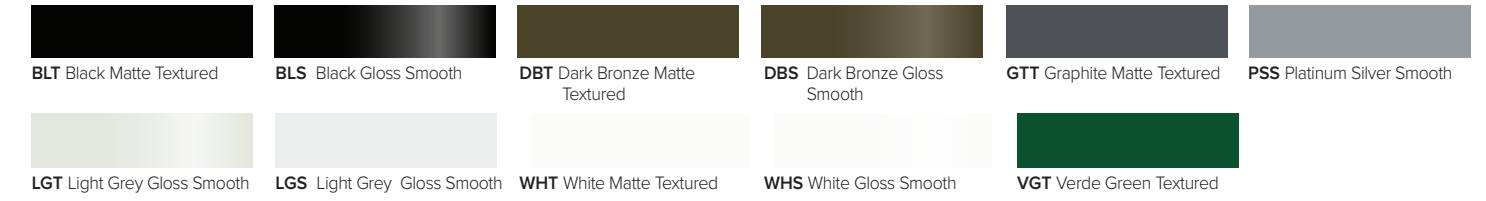
ACCESSORIES (ORDERED SEPARATELY)

Catalog Number	Description
<input type="checkbox"/> ACC-O-ASL1-HSS-90-B-XXX ¹	House Side Shield Back 90 deg
<input type="checkbox"/> ACC-O-ASL1-HSS-90-F-XXX ¹	House Side Shield Front 90 deg
<input type="checkbox"/> ACC-O-ASL1-HSS-90-S-XXX ¹	House Side Shield Side 90 deg
<input type="checkbox"/> ACC-O-ASL1-HSS-270-BSS-XXX ¹	House Side Shield Back, Side & Side 270 deg
<input type="checkbox"/> ACC-O-ASL1-HSS-270-FSS-XXX ¹	House Side Shield Front, Side & Side 270 deg
<input type="checkbox"/> ACC-O-ASL1-HSS-270-FSB-XXX ¹	House Side Shield Front, Side & Back 270 deg
<input type="checkbox"/> ACC-O-ASL1-HSS-360-XXX ¹	House Side Shield 360 deg
<input type="checkbox"/> ACC-O-ASL2-HSS-90-B-XXX ¹	House Side Shield Back 90 deg
<input type="checkbox"/> ACC-O-ASL2-HSS-90-F-XXX ¹	House Side Shield Front 90 deg
<input type="checkbox"/> ACC-O-ASL2-HSS-90-S-XXX ¹	House Side Shield Side 90 deg
<input type="checkbox"/> ACC-O-ASL2-HSS-270-BSS-XXX ¹	House Side Shield Back, Side & Side 270 deg
<input type="checkbox"/> ACC-O-ASL2-HSS-270-FSS-XXX ¹	House Side Shield Front, Side & Side 270 deg
<input type="checkbox"/> ACC-O-ASL2-HSS-270-FSB-XXX ¹	House Side Shield Front, Side & Back 270 deg
<input type="checkbox"/> ACC-O-ASL2-HSS-360-XXX ¹	House Side Shield 360 deg
<input type="checkbox"/> SETA2-XX'	Square pole tenon adapter (4 at 90 degrees) (2 3/8" OD tenon)
<input type="checkbox"/> RETA2-XX'	Round pole tenon adapter (4 at 90 degrees) (2 3/8" OD tenon), requires CLIS-RPA4-ACC-XX for each luminaire
<input type="checkbox"/> RARBC80L	Backlight Control 80L
<input type="checkbox"/> RARBC160L	Backlight Control 160L
<input type="checkbox"/> RARBC320L	Backlight Control 320L
<input type="checkbox"/> RARBC480L	Backlight Control 480L
<input type="checkbox"/> CLIS-RPA4-ACC-CC ¹	Round Pole Adapter (*denotes pole diameter 3=3.25"-3.75", 4=3.875"-4.5", 5=5" and paint color replaces CC
<input type="checkbox"/> WB-AREA-XX ¹	Wall bracket, Compatible with standard arm mount option

¹ Replace XX or XXX with color choice, eg: DB for Dark Bronze or BLT for Black Matte Textured



FINISH OPTIONS



AIRO MICROSTRIKE AREA/SITE Luminaire / Pole Combination

10-DAY QUICK SHIPMENT PROGRAM

PRONTO COMBO

10 DAY QUICK SHIPMENT PROGRAM

- Two sizes up to 30,000 lumens
- Single & Double 180 deg. Configurations 4000K & 5000K CCT (70 CRI)
- Type III & IV Distributions
- Dark Bronze Powder Paint (textured)

SSS Series Poles

- Square Straight Steel Construction
- 4" Square x 0.125" Wall Thickness
- 16', 20', & 25' Lengths
- Pole Base Accommodates 8"-10" bolt circles using four (4) 3/4" diameter anchor bolts
- Dark Bronze Powder Paint (textured)
- With or Without Anchor Bolts
- Select Configurations Include Vibration Damper



Quick Shipments

- All Product Manufactured and Ship From Christiansburg, VA Within 10 Days
- Consolidated Shipment – Everything Arrives On One Truck!
- All Configurations Available Less Anchor Bolts
- Stocked Anchor Bolts & Templates Available for Advanced Foundation Construction

Complete Fixture, Pole, Anchor Bolts/Base Covers, Pole Caps and Template



Ordering Information – Pole Combo

Catalog Number	Pole	Single or Double Head	Fixture	Distribution
ASL1-100-4K7-3-S20	20' Square Straight Steel	Single Head	ASL-160L-100-4K7	3
ASL1-100-4K7-4W-S20	20' Square Straight Steel	Single Head	ASL-160L-100-4K7	4W
ASL1-100-4K7-3-S20-2X	20' Square Straight Steel	Double Head (180°)	ASL-160L-100-4K7	3
ASL1-100-4K7-4W-S20-2X	20' Square Straight Steel	Double Head (180°)	ASL-160L-100-4K7	4W
ASL1-100-4K7-3-S25	25' Square Straight Steel	Single Head	ASL-160L-100-4K7	3
ASL1-100-4K7-4W-S25	25' Square Straight Steel	Single Head	ASL-160L-100-4K7	4W
ASL1-100-4K7-3-S25-2X	25' Square Straight Steel	Double Head (180°)	ASL-160L-100-4K7	3
ASL1-100-4K7-4W-S25-2X	25' Square Straight Steel	Double Head (180°)	ASL-160L-100-4K7	4W
ASL1-135-4K7-3-S20	20' Square Straight Steel	Single Head	ASL-160L-135-4K7	3
ASL1-135-4K7-4W-S20	20' Square Straight Steel	Single Head	ASL-160L-135-4K7	4W
ASL1-135-4K7-3-S20-2X	20' Square Straight Steel	Double Head (180°)	ASL-160L-135-4K7	3
ASL1-135-4K7-4W-S20-2X	20' Square Straight Steel	Double Head (180°)	ASL-160L-135-4K7	4W
ASL1-135-4K7-3-S25	25' Square Straight Steel	Single Head	ASL-160L-135-4K7	3
ASL1-135-4K7-4W-S25	25' Square Straight Steel	Single Head	ASL-160L-135-4K7	4W
ASL1-135-4K7-3-S25-2X	25' Square Straight Steel	Double Head (180°)	ASL-160L-135-4K7	3
ASL1-135-4K7-4W-S25-2X	25' Square Straight Steel	Double Head (180°)	ASL-160L-135-4K7	4W
ASL2-145-4K7-3-S20	20' Square Straight Steel	Single Head	ASL-320L-145-4K7	3
ASL2-145-4K7-4W-S20	20' Square Straight Steel	Single Head	ASL-320L-145-4K7	4W
ASL2-145-4K7-3-S20-2X	20' Square Straight Steel	Double Head (180°)	ASL-320L-145-4K7	3
ASL2-145-4K7-4W-S20-2X	20' Square Straight Steel	Double Head (180°)	ASL-320L-145-4K7	4W
ASL2-145-4K7-3-S25	25' Square Straight Steel	Single Head	ASL-320L-145-4K7	3
ASL2-145-4K7-4W-S25	25' Square Straight Steel	Single Head	ASL-320L-145-4K7	4W
ASL2-145-4K7-3-S25-2X	25' Square Straight Steel	Double Head (180°)	ASL-320L-145-4K7	3
ASL2-145-4K7-4W-S25-2X	25' Square Straight Steel	Double Head (180°)	ASL-320L-145-4K7	4W
ASL2-210-4K7-3-S20	20' Square Straight Steel	Single Head	ASL-320L-210-4K7	3
ASL2-210-4K7-4W-S20	20' Square Straight Steel	Single Head	ASL-320L-210-4K7	4W
ASL2-210-4K7-3-S20-2X	20' Square Straight Steel	Double Head (180°)	ASL-320L-210-4K7	3
ASL2-210-4K7-4W-S20-2X	20' Square Straight Steel	Double Head (180°)	ASL-320L-210-4K7	4W
ASL2-210-4K7-3-S25	25' Square Straight Steel	Single Head	ASL-320L-210-4K7	3
ASL2-210-4K7-4W-S25	25' Square Straight Steel	Single Head	ASL-320L-210-4K7	4W
ASL2-210-4K7-3-S25-2X	25' Square Straight Steel	Double Head (180°)	ASL-320L-210-4K7	3
ASL2-210-4K7-4W-S25-2X	25' Square Straight Steel	Double Head (180°)	ASL-320L-210-4K7	4W

Quick Ship Ordering Information – Standalone Fixture

Series	# LEDs	CCT/CRI	Distribution	Rotation/Orientation	Mounting	Voltage	Control Receptacle
ASL1 AIRO 1 Microstrike Series	160L-100	12,000 lm	2 Type II 3 Type III 4W Type 4W 5QW Type 5QW	L Optic rotation left R Optic rotation right	ASQ Arm Square w/ Universal Mount MAF Mast Arm Fitter for 2-3/8" OD	UNV Universal 120-277V 120 120V 208 208V 240 240V 277 277V 347 347V 480 480V	7PR 7 Pin Receptacle 7PR-SC 7 Pin Receptacle with shorting cap 7PR-TL 7 Pin Receptacle with Photocontrol
	160L-135	18,000 lm					
ASL2 AIRO 2 Microstrike Series	320L-145	21,000 lm	2 Type II 3 Type III 4W Type 4W 5QW Type 5QW	L Optic rotation left R Optic rotation right	ASQ Arm Square w/ Universal Mount MAF Mast Arm Fitter for 2-3/8" OD	UNV Universal 120-277V 120 120V 208 208V 240 240V 277 277V 347 347V 480 480V	7PR 7 Pin Receptacle 7PR-SC 7 Pin Receptacle with shorting cap 7PR-TL 7 Pin Receptacle with Photocontrol
	320L-210	30,000 lm					



Current lighting Solutions, LLC

701 Millennium Blvd.
Greenville, SC 29607

www.currentlighting.com/EXO

© 2022 HLI Solutions, a division of Current, Inc. All rights reserved. Information and specifications subject to change without notice
All values are design or typical values when measured under laboratory conditions.

Rev 04/16/2026

AIRO_Micro Strike brochure HOL
