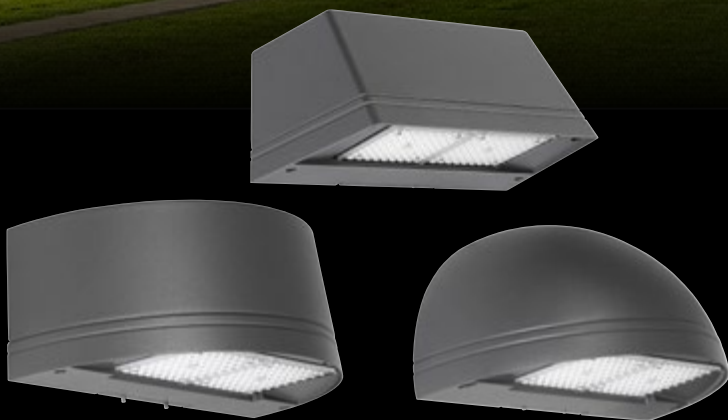




GEOPAK™
S E R I E S



OPTICS
STRIKE

MICROSTRIKE

GEOPAK SERIES

New, high performance, energy-efficient, GeoPak™ series is an outdoor architectural wall sconce family featuring superior performance, two versatile sizes, and integrated controls.



SHAPE + SCALE + PERFORMANCE + CONTROL

Available in the most popular paint finishes and architectural shapes including trapezoid, radius and quartersphere. These wall sconce luminaires feature high lumen output, excellent uniformity, photocontrol and occupancy sensor for optimum performance and energy savings.

MICROSTRIKE

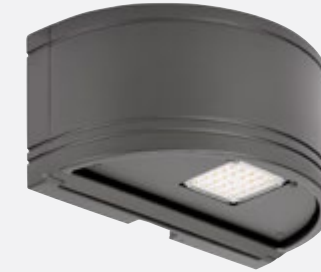
Micro Strike optics provide the most utilized distributions for wall mount applications. Type 2 offers the greatest spacing of luminaires on the wall, while Type 4F provides the longest forward distribution away from the building.

GeoPak series is available in **THREE** architectural forms and **TWO** sizes to optimize scale in a wide variety of applications including **UP/DOWN** lighting and **LOW GLARE**

SIZE 1



TRAPEZOID

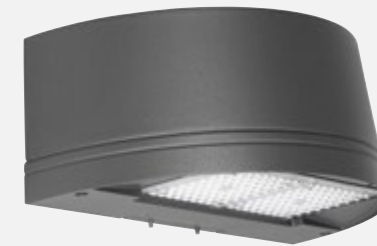


RADIUS



QUARTERSPHERE

SIZE 2



MICRO STRIKE VERSION

Rugged die-cast housing with architectural styling, available in dark bronze, black, gray, white, platinum silver, graphite (shown) and custom color finishes



Types 2, 3, 4 forward (4F), 4 wide (4W) distributions provides better uniformity with Micro Strike lenses

Control options for additional energy savings

MICRO STRIKE

FEATURES

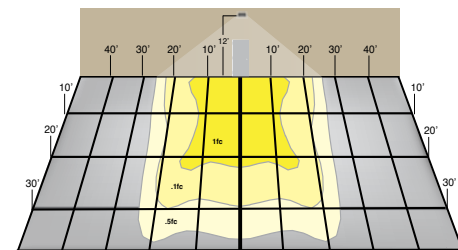
- Key distributions for every day applications: Type 2, 3, 4F, 4W
- High efficacy and lumens per watt
- Single piece optic provides more visual comfort

NX CONTROL



Networkable and stand alone occupancy sensors offer great control and energy savings with adjustable delay and dimming levels.

EMERGENCY EGRESS (Micro Strike)



160L - 12' Mounting Height

Emergency Lighting is available to meet emergency egress requirements. Integral battery back-up is available for OC and with a heater to meet -20C requirements.

STRIKE VERSION

Rugged die-cast housing with architectural styling, available in dark bronze, black, gray, white, platinum silver, graphite (shown) and custom color finishes



Available in 2700K, 3000K, 4000K, 5000K and Amber CCT

Types 2, 3, 4 forward (4F) and 4 wide (4W) distributions for up to 5:1 spacing; providing greater coverage and fewer fixtures to install

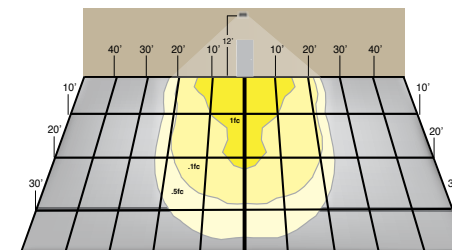
Control options for additional energy savings

STRIKE

FEATURES

- Key distributions for everyday applications: Type 2, 3, 4F, and 4W
- Closest match to existing GeoPak installations
- Monochromatic Amber option for wildlife friendly applications

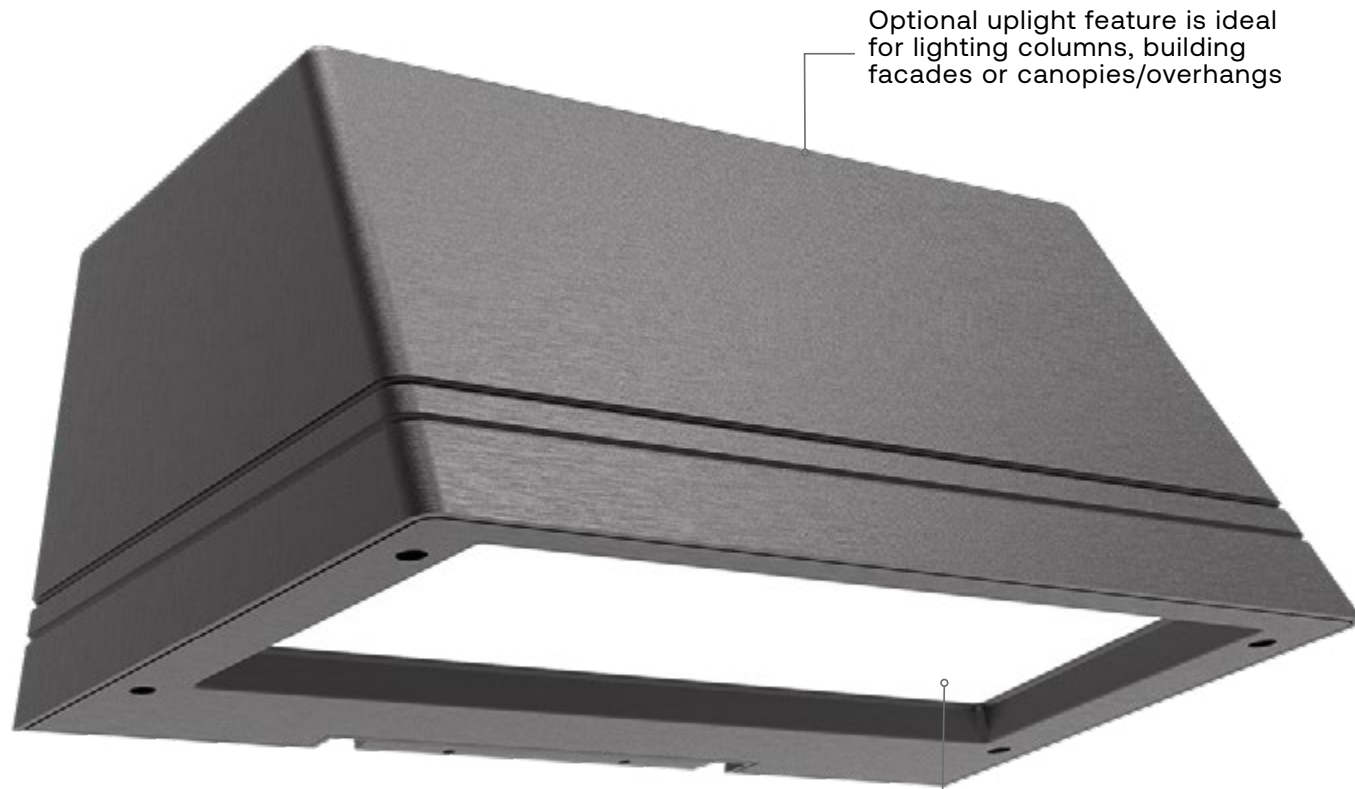
EMERGENCY EGRESS (STRIKE)



36L - 12' Mounting Height

Emergency Lighting is available to meet emergency egress requirements. Integral battery back-up is available for OC and with a heater to meet -20C requirements.

LOW GLARE – DIFFUSER



Optional uplight feature is ideal for lighting columns, building facades or canopies/overhangs

Precision crafted optics and reflectors provide up to 150 LPW and zero pixelation over the lens for superior visual comfort

FEATURES

- Trapezoid and Radius housing shapes in GeoPak size 2
- Low glare zero pixelation lens
- Three uplight distributions
- Control capabilities offer additional energy savings
- DesignLights Consortium® (DLC) qualified. Please refer to the DLC website for specific product qualifications at www.designlights.org

LOW GLARE



Designed for optimal visual comfort and maximum performance, the low glare versions provide excellent illumination and uniformity with zero LED pixelation.

UPLIGHT

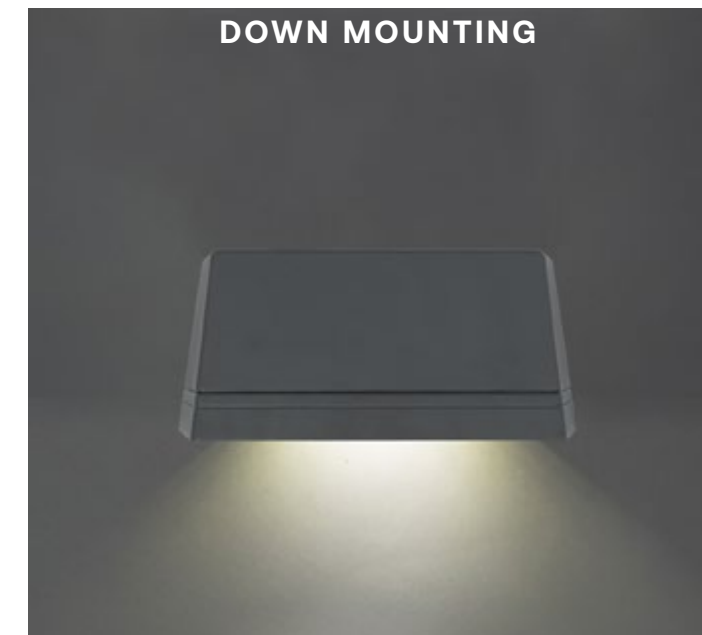


Optional uplight distributions provide accent lighting for columns, canopies or building facades

The wall graze also creates a 50/50 appearance on the wall while still providing general illumination on the ground

VERSATILITY IN APPLICATION

PRIMARY DISTRIBUTIONS



High performance IES distributions types 2, 3, 4F & 4W provide best in class performance for lighting building perimeters and walkways.

TRP1	RD11	QSP1
✓	✓	✓
TRP2	RD12	QSP2
✓	✓	✓

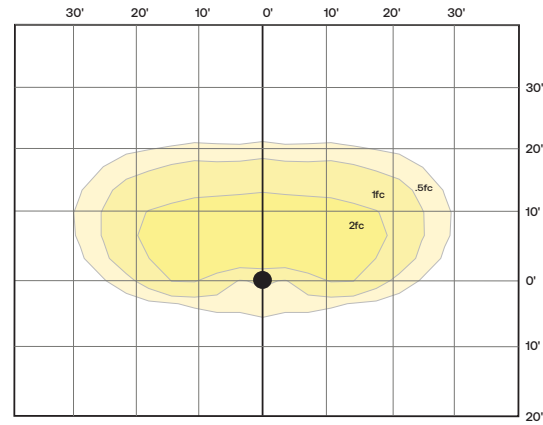
SECONDARY DISTRIBUTIONS LOW GLARE VERSION ONLY

Available with uplight wall graze, canopy and spot distributions, GeoPak size 2 offers the ideal solution for lighting building facades, canopies and tall columns without sacrificing down lighting performance.

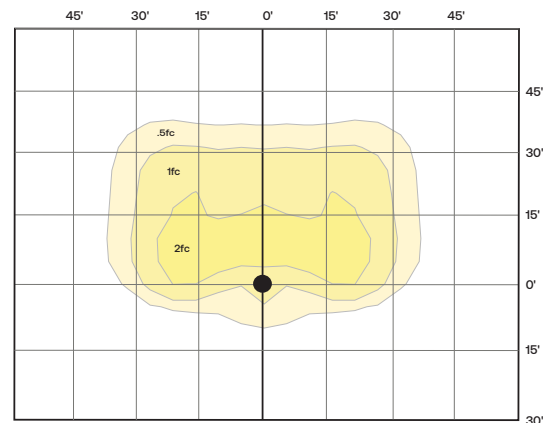
TRP2	RD12
✓	✓



Performance – Size 1 – TRP1, RDI1, QSP1 – 10Ft. Mounting Height



Type 3

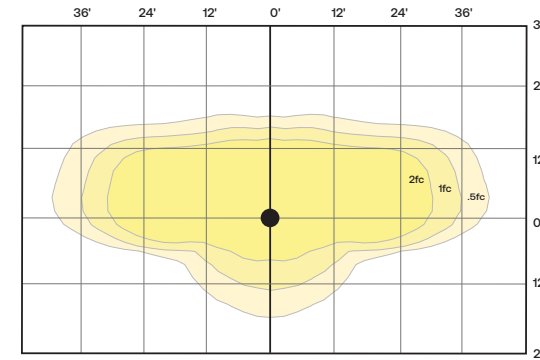


Type 4F

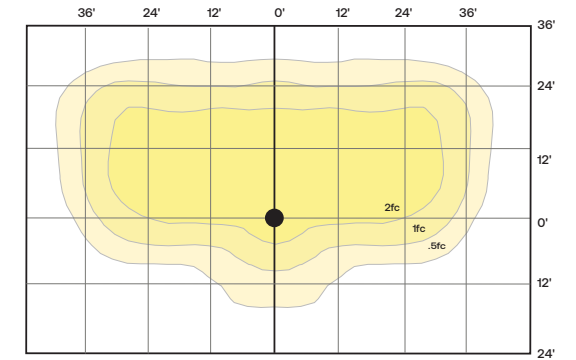
Performance data

GeoPak size 1 Series Number	HID Equivalency		Lumens Delivered	System Watts	Lumens Per Watt 4K, Type 3
	MH	HPS			
24L - 15	70w	70w	1,800	15	120
24L - 20	100w	100w	2,500	20	125
24L - 25	150w	150w	2,800	25	112

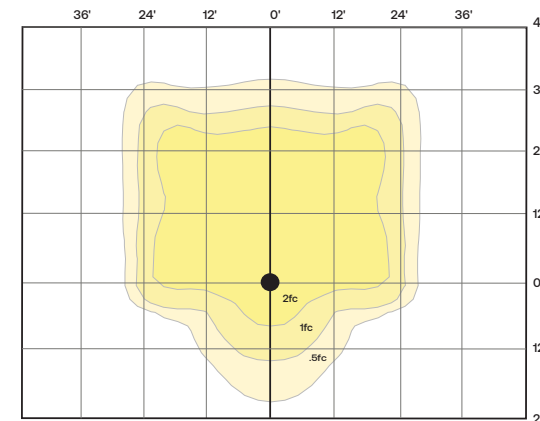
Performance – Size 2 – TRP2, RDI2, QSP2 – 12Ft. Mounting Height



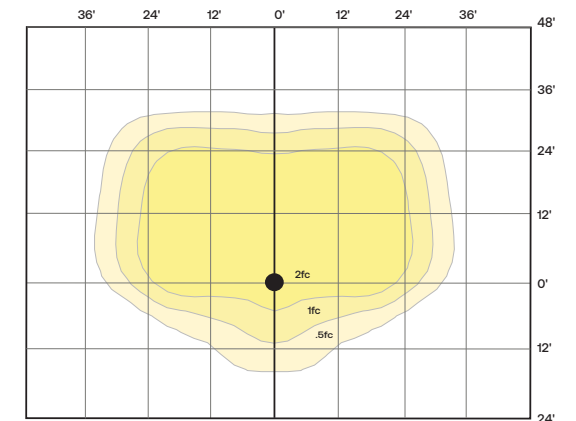
Type 2



Type 3

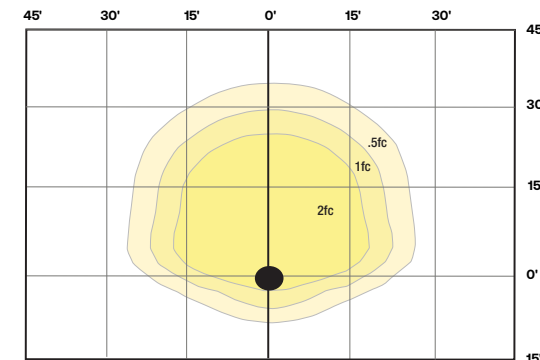


Type 4F

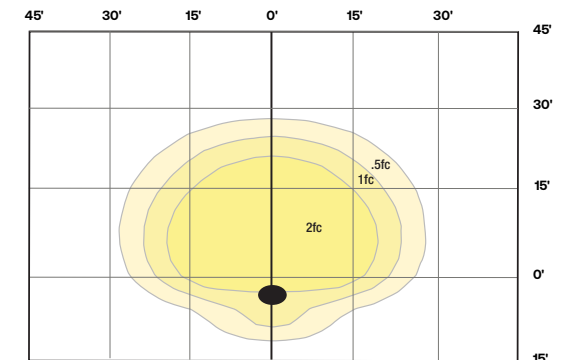


Type 4W

Low Glare Performance – Size 2 – TRP2 – 15Ft. Mounting Height



FORWARD THROW



WIDE THROW

Performance data

GeoPak size 2 Micro Strike	HID Equivalency		Lumens Delivered	System Watts	Lumens Per Watt 4K, Type 3
	MH	HPS			
160L-25	150W	150W	3672	24.4	150.5
160L-35	150W	150W	5509	37.7	146.1
160L-50	175W	175W	7749	56.2	137.9
160L-75	250W	250W	9805	71.9	136.4
160L-100	400W	400W	12156	95.7	127.0
160L-115	400W	400W	14800	116.6	126.9

Low Glare

GeoPak size 2 Series Number	HID Equivalency		Lumens Delivered	System Watts	Lumens Per Watt 4K, Type FT
	MH	HPS			
D-20	100w	100w	3,000	20	155
D-30	150w	150w	5,000	30	150
D-50	175w	175w	7,000	50	145
D-70	250w	250w	9,000	70	140

ORDERING INFORMATION – Size 1 – TRP1, RDI1, QSP1

ORDERING INFORMATION

Series	# LEDs	Wattage	CCT/CRI	Distribution	Voltage
TRP1 Trapezoid	24L 24 LEDs	15 15 watts	3K7 3000K, 70 CRI	3 TYPE 3	UNV 120-277V
RDI1 Radius		20 20 watts	4K7 4000K, 70 CRI	4W TYPE 4 Wide	120 120V
QSP1 Quartersphere		25 25 watts	5K7 5000K, 70 CRI		208 208V
			3K8 3000K, 80 CRI		240 240V
			4K8 4000K, 80 CRI		277 277V
			5K8 5000K, 80 CRI		347 347V
					480 480V

Color	Control Options Network	Options
BLT Black Matte Textured	PC Button Photocontrol	F ⁴ Fusing (only available with STD fixture configuration, 120-277V only)
BLS Black Gloss Smooth	SCP ^{2,3} Programmable occupancy sensor, factory default is 10% light output	E ^{1,5} Battery pack (0°C)
DBT Dark Bronze Matte Textured	Spec SCP/SCO & SWPM Mount Height	EH ^{1,5} Battery pack (-30°C) with heater
DBS Dark Bronze Gloss Smooth	-8F Up to 8ft mount height	
GTT Graphite Matte Textured	-20F Up to 20ft mount height	
LGS Light Grey Gloss Smooth		
PSS Platinum Silver Smooth		
WHT White Matte Textured		
WHS White Gloss Smooth		
VGT Verde Green Textured		
Color Option		
CC Custom Color		

Notes:

- 1 Voltage specific (120 or 277V only)
- 2 Must order minimum of one remote control to program dimming settings, 0-10V fully adjustable dimming with automatic daylight calibration and different time delay settings, 120-277V only
- 3 PCU option not applicable, included in sensor
- 4 Must specify input voltage (120, 208, 240 or 277)
- 5 PCU and EH cannot be combined in the QSP1 because of space constraints

ACCESSORIES (ORDERED SEPARATELY)

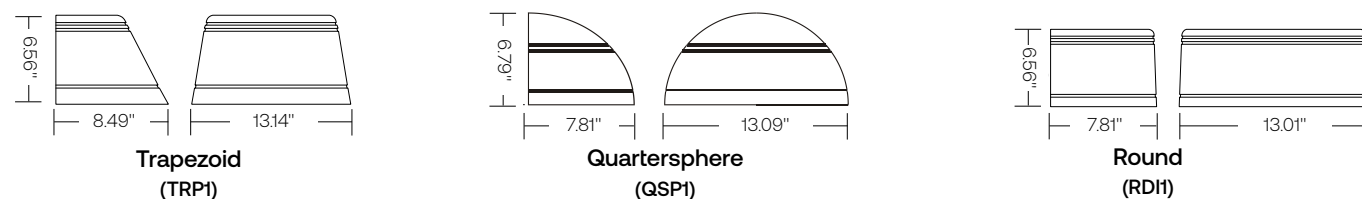
Catalog Number	Description
<input type="checkbox"/> SCP-REMOTE*	Remote control for SCP option. Order at least one per
<input type="checkbox"/> WP-BB-XXX	Accessory for conduit entry, replace "xxx" with color option

Notes:

- * Must order minimum of one remote control to program dimming settings, 0-10V fully adjustable dimming with automatic daylight calibration and different time delay settings.

DIMENSIONS

GEOPAK 1



ORDERING INFORMATION – Size 2 – TRP2, RDI2, QSP2

ORDERING INFORMATION

Series	# LEDs - Wattage	CCT/CRI	Distribution	Voltage
TRP2 Trapezoid	36L-25 4,200 Lumens (Strike)	27K8 2700K, 70 CRI	2 TYPE 2	UNV 120-277V
RDI2 Radius	36L-39 5,700 Lumens (Strike)	3K7 3000K, 70 CRI	3 TYPE 3	120 120V
QSP2 Quartersphere	36L-55 7,700 Lumens (Strike)	3K8 3000K, 80 CRI	4W TYPE 4 Wide	208 208V
	36L-85 10,300 Lumens (Strike)	4K7 4000K, 70 CRI	4F TYPE 4 Forward	240 240V
	36L-105 12,300 Lumens (Strike)	4K8 4000K, 80 CRI		277 277V
	36L-120 13,100 Lumens (Strike)	5K7 5000K, 70 CRI		347 347V
	160L-25 3,600 Lumens (Micro Strike)	5K8 5000K, 80 CRI		480 480V
	160L-35 5,500 Lumens (Micro Strike)			
	160L-50 7,700 Lumens (Micro Strike)			
	160L-75 9,700 Lumens (Micro Strike)			
	160L-100 12,000 Lumens (Micro Strike)			
	160L-115 14,600 Lumens (Micro Strike)			

Color	Control Options	Options
BLT Black Matte Textured	PC Button Photocontrol	SF ² Single fuse & fuse holder
BLS Black Gloss Smooth	NXW NX Wireless Radio (No Sensor)	DF ² Double fuse & fuse holder
DBT Dark Bronze Matte Textured	NXWS NX Wireless Sensor w/BT	E ^{3,4,5} Battery pack (0°C)
DBS Dark Bronze Gloss Smooth	BTSO Bluetooth Sensor OMNI	EH ^{3,4,5} Battery pack (-20°C) with heater
GTT Graphite Matte Textured	CD Customer Dimming	2DR ⁶ Dual Drivers
LGS Light Grey Gloss Smooth	Mount Height	2PF ^{3,6} Dual power feeds
PSS Platinum Silver Smooth	-12F Up to 12ft mount height	SP Surge Protector
WHT White Matte Textured		
WHS White Gloss Smooth		
VGT Verde Green Textured		
Color Option		
CC Custom Color		

Notes:

- 1 70 & 90 watt versions only
- 2 Must specify voltage
- 3 Battery option not compatible with 2 power feeds
- 4 E and EH options available for 160L-25, 160L-35, 160L-50, 36L-25, 36L-39, and 36L-55
- 5 E and EH available for UNV, 120, 208, 240, 277V
- 6 Option only available with 36L-85, 36L-105, 36L-120, 160L-75, 160L-100, and 160L-115.

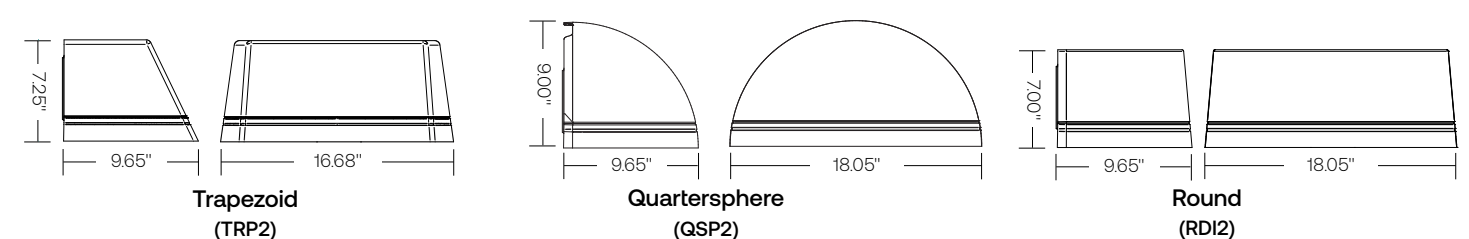
This product meets federal procurement law requirements under the Buy American Act (FAR 52.225-9) and Trade Agreements Act (FAR 52.225-11). See Buy American Solutions

ACCESSORIES (ORDERED SEPARATELY)

Catalog Number	Description
<input type="checkbox"/> WP-BB-DBT	Backbox with four 1/2" threaded conduit holes painted Dark Bronze Texture

DIMENSIONS

GEOPAK 2





HLI Solutions, Inc.

701 Millennium Blvd.
Greenville, SC 29607

currentlighting.com/beam

© 2023 HLI Solutions, Inc. All rights reserved. Information and specifications subject to change without notice. All values are design or typical values when measured under laboratory conditions.

The Bluetooth® word mark and logos are registered trademarks owned by Bluetooth SIG, Inc. and any use of such marks by Current is under license. Other trademarks and trade names are those of their respective owners.

Rev 09/14/23

Geopak2_Brochure
