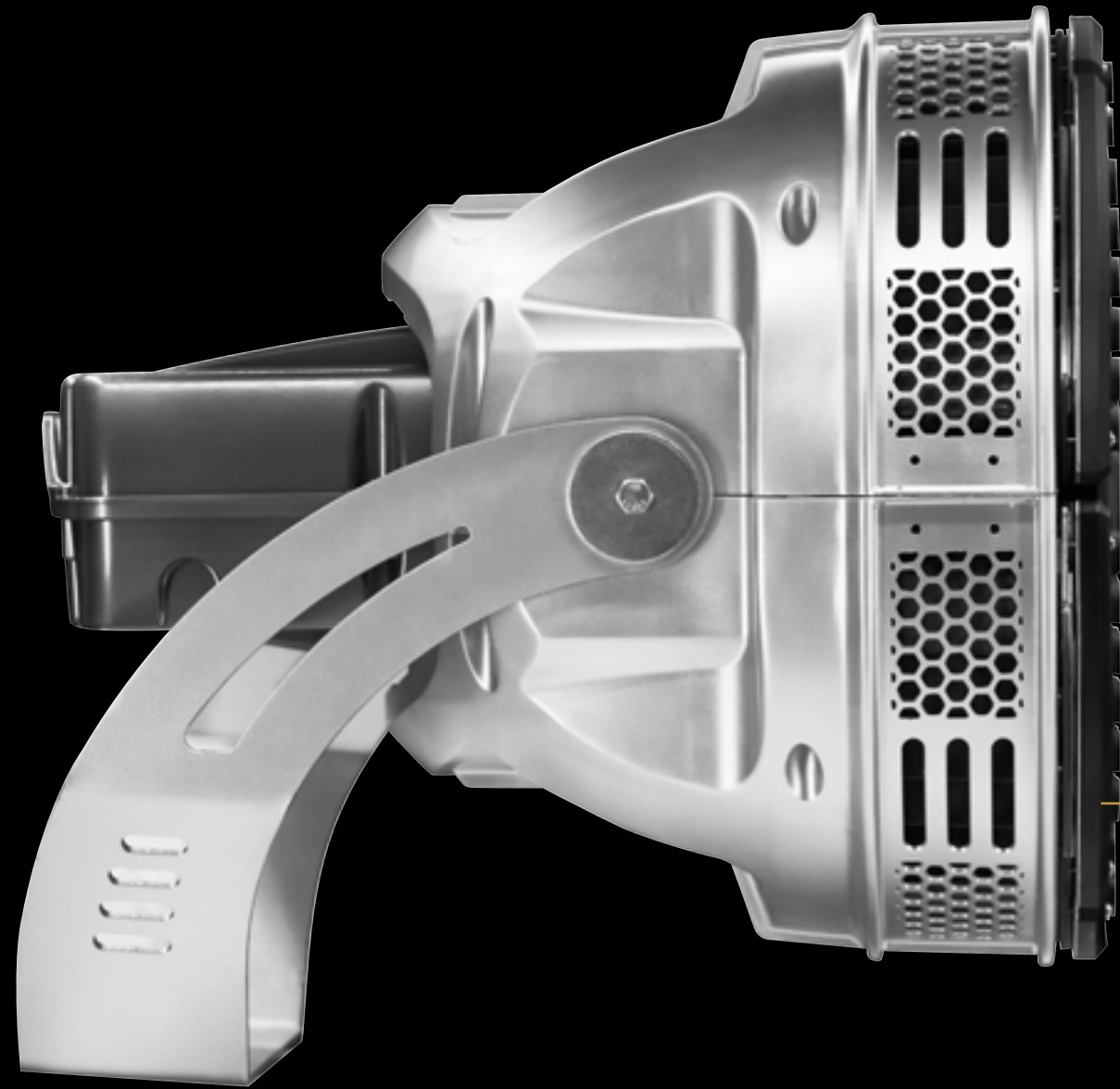


S P O R T S L I G H T I N G

INTERCEPT

ELEVATE YOUR GAME

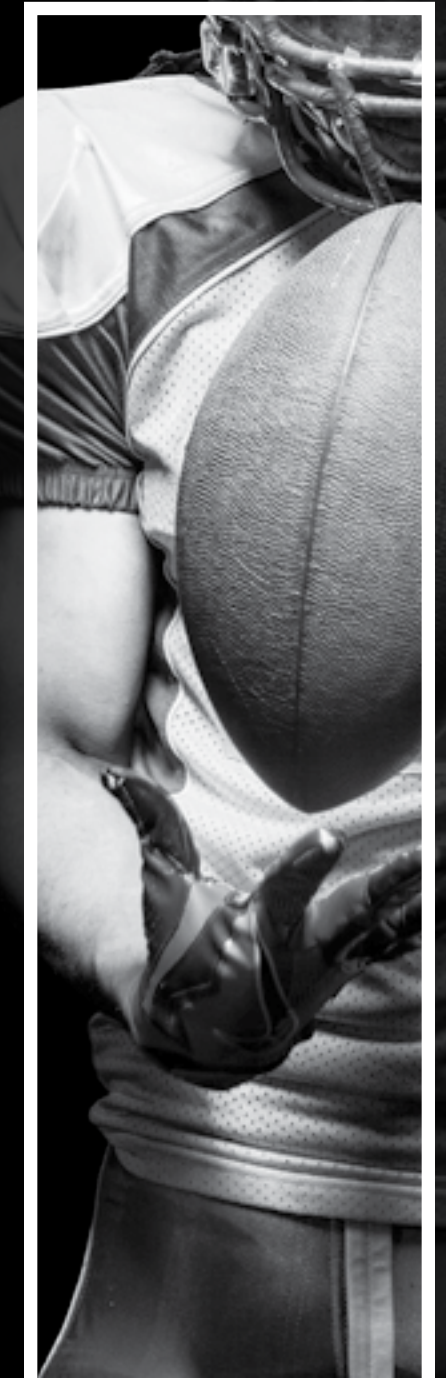
INTERCEPT® SPORTS LIGHTING



We *light your path to victory* by providing a system that *outperforms* anything you have *experienced* in the past.

A system that disappears before your eyes but *highlights everything* you *want and need to see*.

A system that operates *effortlessly and efficiently* so you can *elevate your game* and *experience* every moment.



ELEVATE YOUR GAME

Performance

Legacy HID systems provided excellent initial light levels and uniformity, but difficult to contain illumination to the field.

This presents challenges in **reducing** the spill light surrounding the field.

HID

43 fc
40 fc
33 fc
27 fc
20 fc

LED

43 fc
40 fc
20 fc

Intercept's LED optics are recessed in a low glare shield providing the perfect combination of **optical accuracy** and **cutoff**.

When aimed on the field, this results in excellent light levels and **uniformity** throughout the life of the system, as well as a significant reduction in spill light.

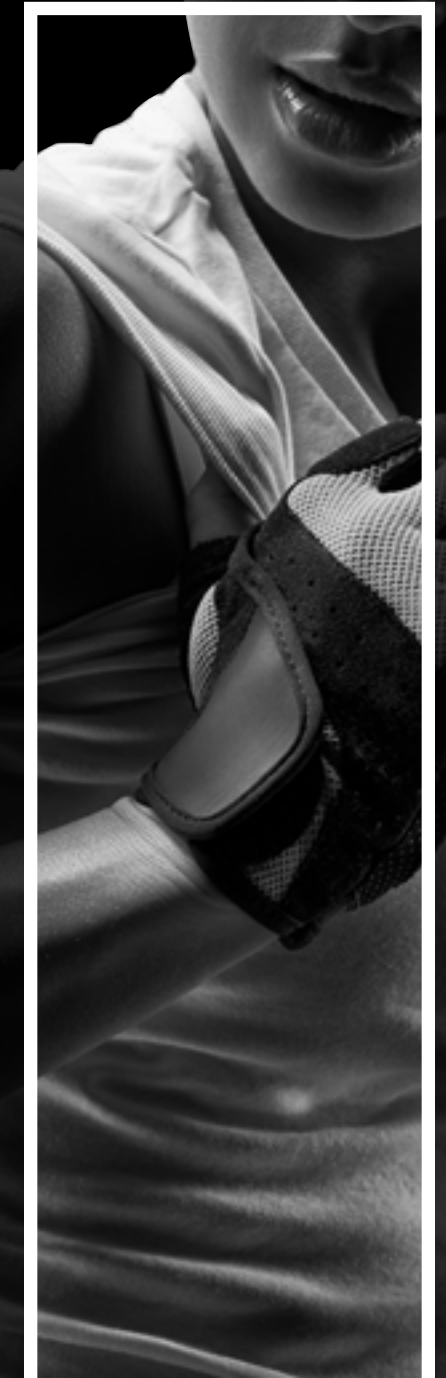
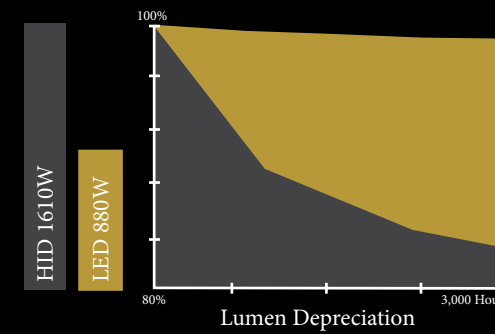
ELEVATE YOUR GAME

Experience



Intercept® delivers light exactly where you need it to spot the receiver, catch that fly ball, steal the puck, line up the three pointer or watch the game winning shot.

We can achieve *performance* that was not possible with legacy systems.



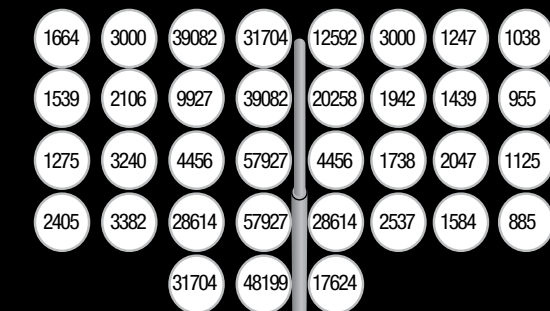
ELEVATE YOUR GAME

Glare Control

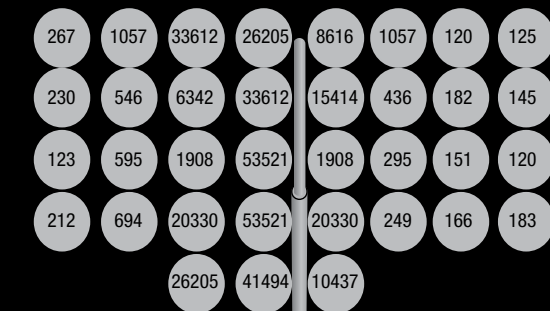


Athletes are under intense pressure to perform and any distractions that can potentially impact their performance should be eliminated or at the least minimized. Fixture glare has the potential to be a distraction if not properly controlled. Intercept's low Glare shield minimizes the glare at any point on the field to only the fixtures that are specifically aimed at that exact location.

No Glare Control



Intercept® With Glare Control



The illustrations above show the candela the batter sees from each LED fixture with and without glare control. There is a reduction in luminous intensity from every luminaire in some cases up to 93%.

ELEVATE YOUR GAME

Product Design

THERMAL

Dynamic thermal management design maximizes heat dissipation, substantially increasing life of the luminaire.

SURGE

Built in surge suppression adds an additional layer of protection for the luminaire's driver and electronic components.

LED MODULES

Scalable LED modules allow for an optimized configuration for different sports and class of play.

GLARE CONTROL

The Intercept® low glare shields provide industry leading glare reduction with minimal effect on light output.

OPTICS

Precision TIR optics place light on target with greater control.

EMBEDDED CONTROLS

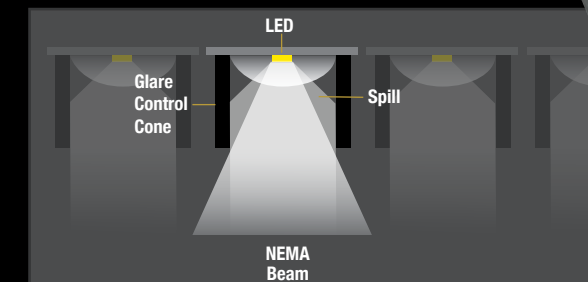
Flexible control solutions allow for individual fixture control for your desired functionality; anywhere from on/off control to a wireless, fully scheduled system.

INTEGRAL DRIVER

With integral or remote driver capabilities, this luminaire gives additional flexibility to fit into a variety of indoor and outdoor applications.

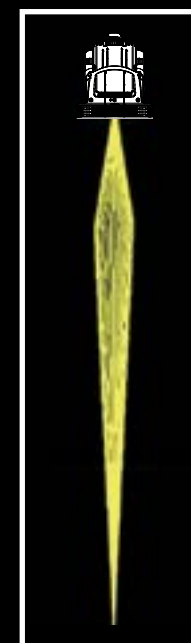
OPTICS SYSTEM

The louvered design encompasses each optic to reduce spill light without compromising the light within the concentrated beam. This glare control has the ability to reduce the candela per meter² outside of the beam by 92% while affecting the lumen output of the product by less than 10%. This results in a 37% reduction in the Glare Rating when compared to the typical LED solution.

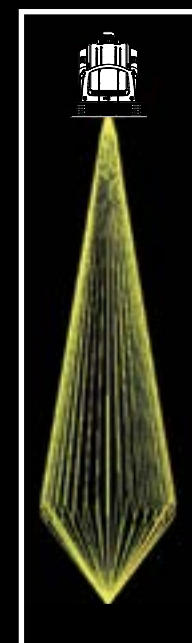


BEAM SPREADS

The Intercept® is available in four beam spreads: 2x2, 3x3, 4x4 and 5x5. The variety of beam spreads are excellent for large venue applications and precise areas that require specialized illumination.



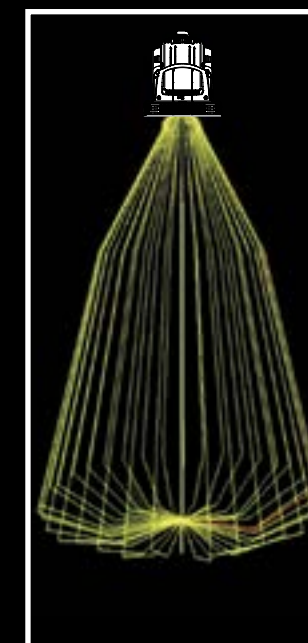
2 X 2



3 X 3



4 X 4



5 X 5

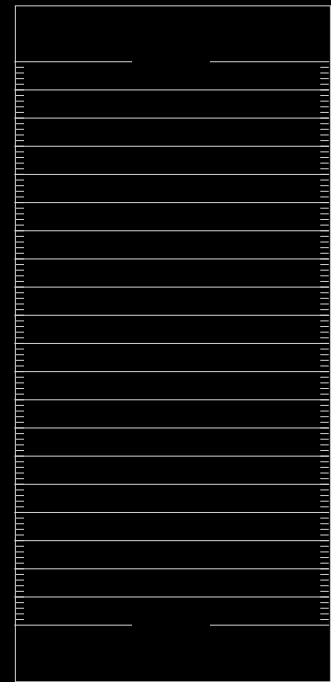
OUTDOOR SOLUTIONS

Intercept® Field Sport - VFS



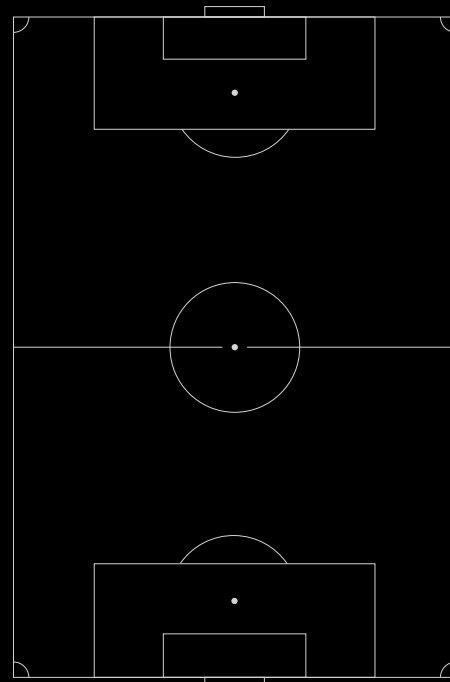
INTERCEPT® SPORTS LIGHTING

FOOTBALL



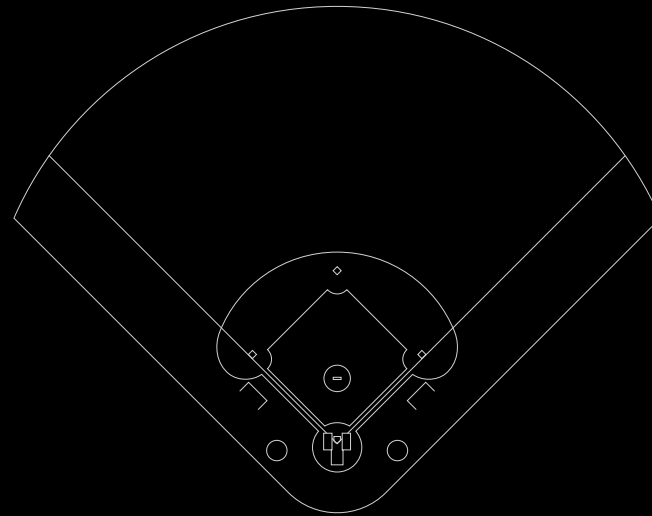
	HID	LED
Wattage	103 KW	53 KW

SOCCER



	HID	LED
Wattage	135 KW	59 KW

BASEBALL/SOFTBALL

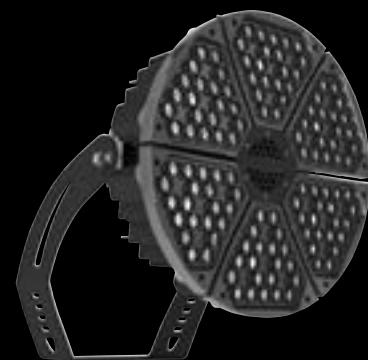


	HID	LED
Wattage	81 KW	44 KW

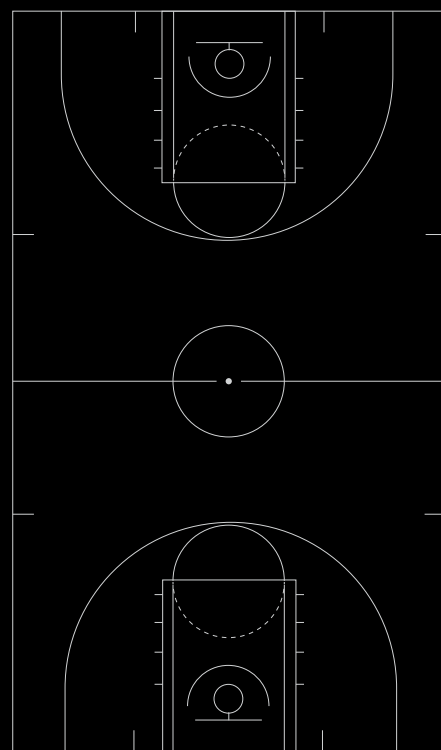


INDOOR SOLUTIONS

Intercept® Area Sport - VAS

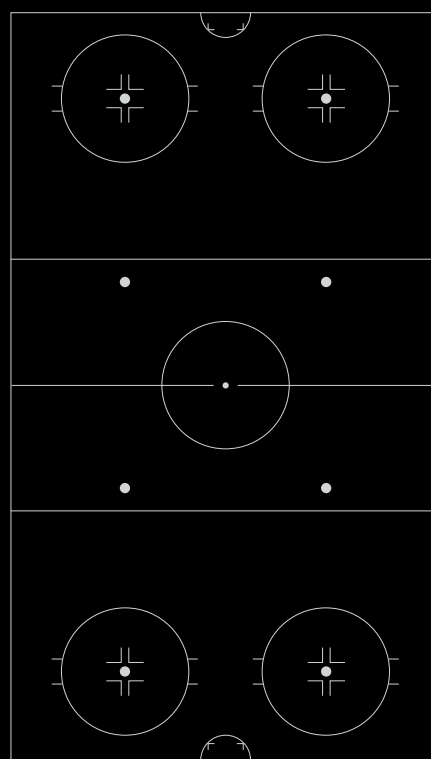


BASKETBALL



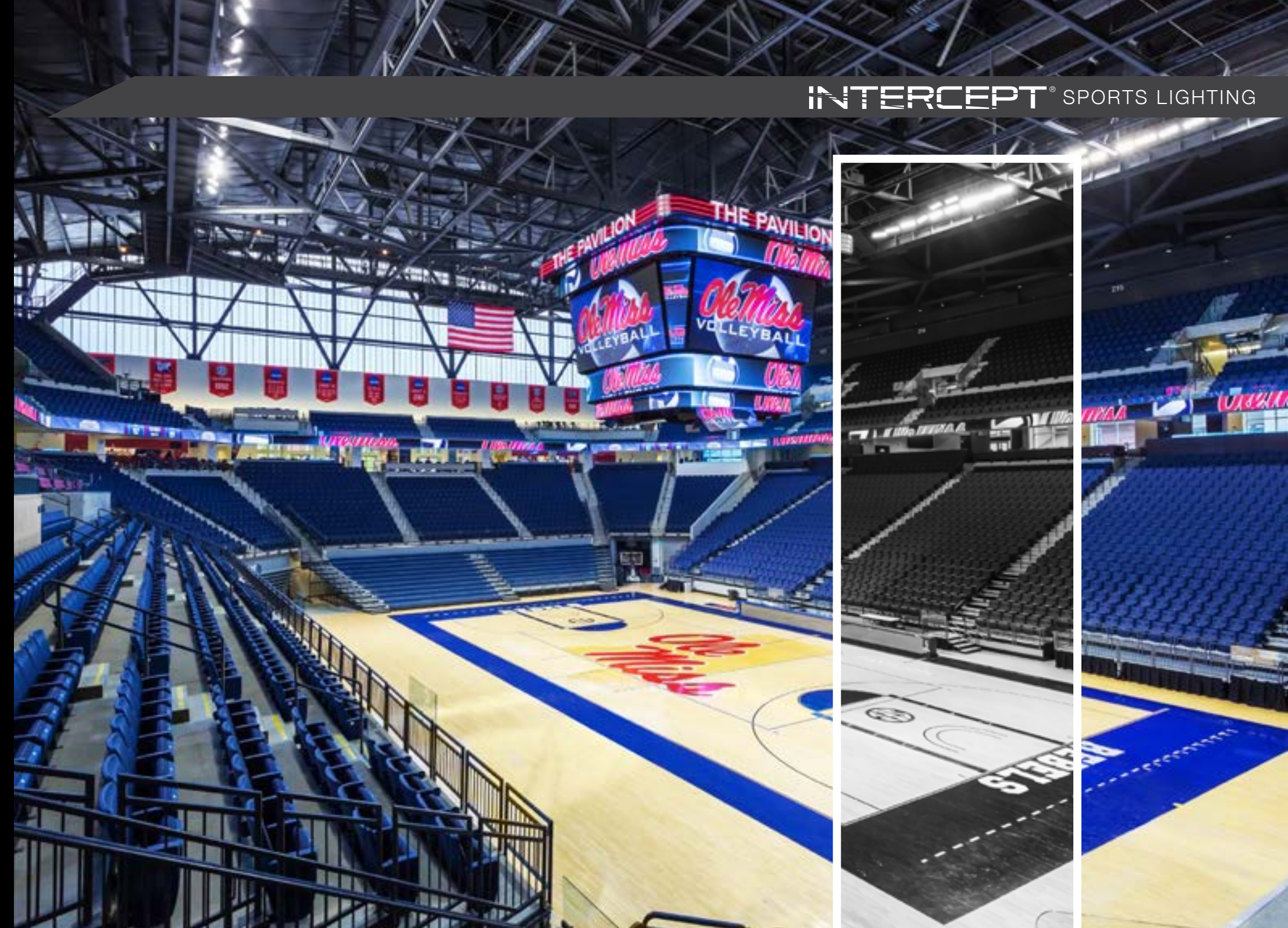
	HID	LED
Wattage	58 KW	43 KW

HOCKEY



	HID	LED
Wattage	137 KW	102 KW

INTERCEPT® SPORTS LIGHTING



ORDERING

VFS - General Flood Sports Lighting

VFS																	
SERIES	MOUNT	ENGINE-WATTS		CCT	DISTRIBUTION	VOLTAGE	CORD	CONTROL OPTIONS	OPTIONS								
VFS	Flood Sports Lighting	Y	Yoke	63L-440	440W, 45,000 lm	3K7	3000K, 70 CRI	2	2x2	277	277V	3C	3' Prewired SEOWA cord	CD	Continuous dimming	LGC	Less Glare Control
		UMY	Under Mount Yoke	84L-660	660W, 60,000 lm	4K7	4000K, 70 CRI	3	3x3	347	347V	6C	6' Prewired SEOWA Cord	NXW	NX Networked Wireless	SF	Single Fuse
				126L-880	880W, 90,000 lm	5K7	5000K, 70 CRI	4	4x4	480	480V	12C	12' Prewired SEOWA Cord	DMX	DMX/RDM	DF	Double Fuse
						57K7	5700K, 70 CRI	5	5x5							GL	Glass Lens
						4K8	4000K, 80 CRI	6	6x6								
						5K8	5000K, 80 CRI										
						57K8	5700K, 80 CRI										
						4K9	4000K, 90 CRI										
						5K9	5000K, 90 CRI										
						57K9	5700K, 90 CRI										

ACCESSORIES (ORDER SEPARATELY)	
ACCESSORIES	
VFSVISOR	Top Visor

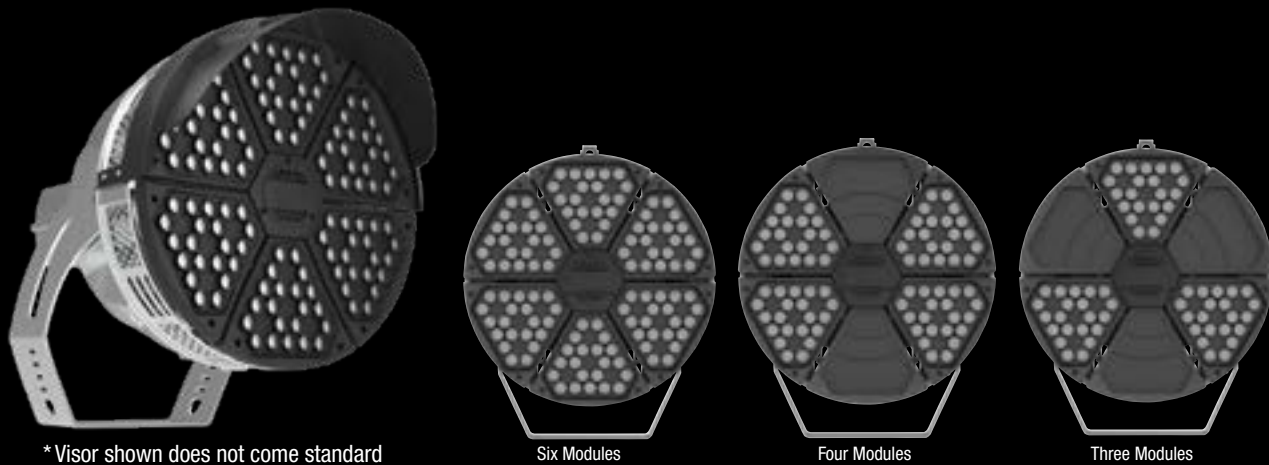
¹ Includes glass lens

VAS - Arena Flood Sports Lighting

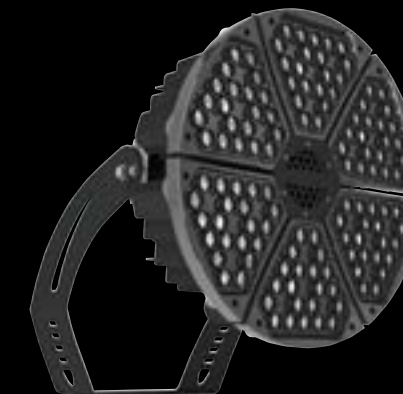
VAS																	
SERIES	MOUNT	ENGINE-WATTS		CCT	DISTRIBUTION	VOLTAGE	FIXTURE TO DRIVER DISTANCE	CORD	CONTROL OPTIONS	OPTIONS							
VAS	Arena Sports Lighting	Y	Yoke	63L-440	440W, 45,000 lm	3K7	3000K, 70 CRI	2	2x2	277	277V	3C15	3' Prewired SEOWA cord 15A Plug	CD	Continuous dimming	LGC	Less Glare Control
		UMY	Under Mount Yoke	84L-660	660W, 60,000 lm	4K7	4000K, 70 CRI	3	3x3	347	347V	3C20	3' Prewired SEOWA cord 20A Plug	NXW	NX Networked Wireless	SF	Single Fuse
				126L-880	880W, 90,000 lm	5K7	5000K, 70 CRI	4	4x4	480	480V	6C15	6' Prewired SEOWA Cord 15A Plug	DMX	DMX/RDM	DF	Double Fuse
						57K7	5700K, 70 CRI	5	5x5			6C20	6' Prewired SEOWA Cord 20A Plug			GL	Glass Lens
						4K8	4000K, 80 CRI	6	6x6			12C15	12' Prewired SEOWA Cord 15A Plug				
						5K8	5000K, 80 CRI					12C20	12' Prewired SEOWA Cord 15A Plug				
						57K8	5700K, 80 CRI										
						4K9	4000K, 90 CRI										
						5K9	5000K, 90 CRI										
						57K9	5700K, 90 CRI										

ACCESSORIES (ORDER SEPARATELY)	
ACCESSORIES	
VFSVISOR	Top Visor

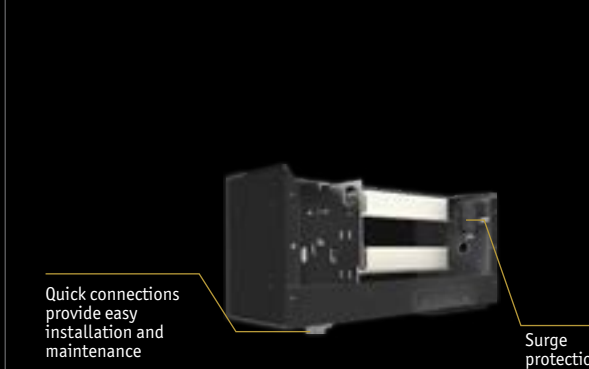
LUMINAIRE CONFIGURATIONS



LUMINAIRE CONFIGURATIONS




REMOTE DRIVER



INTEGRATED CONTROLS

Embedded control solutions allow for hassle free energy savings and dynamic output at an individual fixture level. The three control solutions available for Intercept give sporting venues the ability to set a designated schedule, wirelessly adjust their light level, or even create theatrical lighting shows.

Functionality	Controls Solution	Wired	Wireless
Push Button Control	 NX LIGHTING CONTROLS		Yes
Theatrical Control	DMX/RDM System	Yes	



NX Lighting Controls platform delivers a seamless lighting control solution. NX is capable of scaling from standalone fixture control to networked enterprise deployments. NX operates using wired, wireless and hybrid connectivity with native BACnet™ support.

NX can provide the perfect solution for push button control of the products lighting the field as well as the rest of the facility.

Truly Intelligent

The NX lighting control platform is the first of its kind to utilize a distributed network architecture (DNA) which provides users with unmatched system reliability, scalability and simplicity.

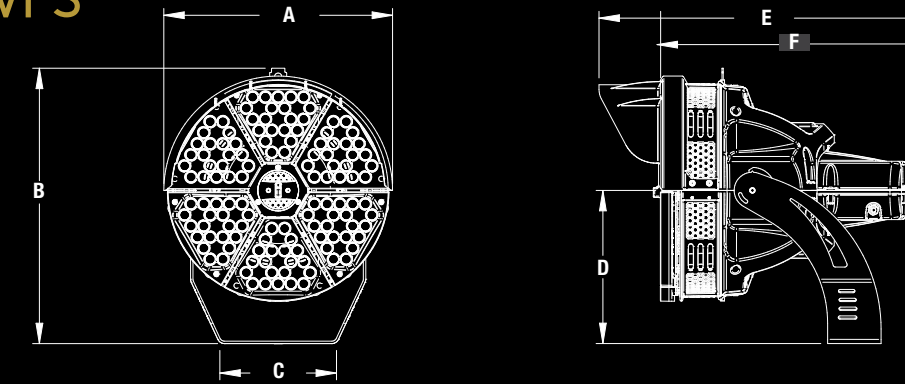
Versatile

NX supports indoor and outdoor applications, wired, wireless and hybrid networked lighting control deployments, and enables SpectraSync™ color tuning technology.

DMX is a common standard used in theatrical lighting that specializes in individual fixture control. This allows for complex sequences to be achieved with ease, resulting in an awestruck crowd. Intercept's DMX compatibility gives you full control of the fixture's dimming, allowing it to participate in the light show.

DIMENSIONS

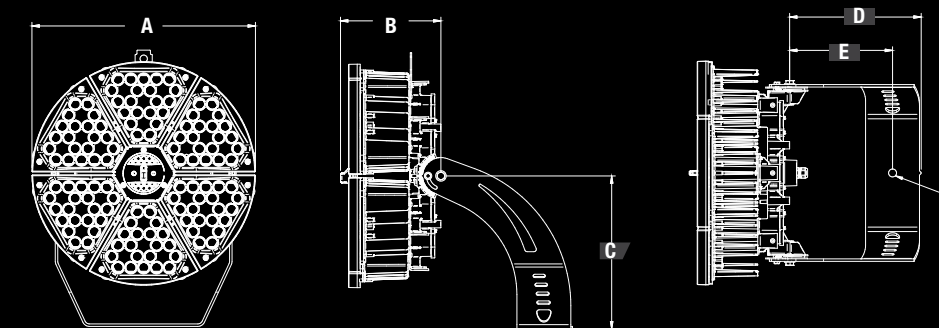
VFS



A	B	C	D	E	F	Weight	EPA
23.5"	28.3"	12.0"	15.6"	32.66"	26.32	100 lbs.	4.2
597 mm	719 mm	305 mm	401 mm	812 mm	668 mm	45 kg	Ft. ²

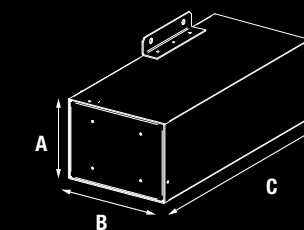
EPA with Visor 3.9 Ft.²

VAS




A	B	C	D	E	F	Weight
22.79"	10.24"	15.60"	13.42"	10.5"	.81	73 lbs.
578 mm	260 mm	396 mm	340 mm	266 mm	20 mm	33 kg

REMOTE DRIVER



A	B	C	Weight
9.5"	11.5"	21.5"	32 lbs.
241 mm	292 mm	546 mm	14.5 kg

Current 

Current - HLI Brands

currentlighting.com/exo

© 2022 HLI Solutions, Inc. All rights reserved. Information and specifications subject to change without notice. All values are design or typical values when measured under laboratory conditions.

(Rev 11/30/21)

HOL_INTERCEPT_brochure_HOL0342_R01
