

# INTERCEPT®

F L O O D

EXO  
OUTDOOR LIGHTING



## ONE PRODUCT MULTIPLE APPLICATIONS

Superior high output, high efficiency LED floodlight with a variety of flood distributions for lighting applications such as general and security lighting for large areas, port and rail centers, airport apron and interior or exterior sports.

### LOW GLARE

Glare has always been a concern with LED products and it has got increasingly more attention with higher output fixtures. Intercept® changes that. The standard low glare shield blocks light outside of the main beam, so from other viewing angles the fixture virtually disappears. The low glare shields were also designed to have minimal impact on the total light output.

### HIGH PERFORMANCE

Intercept's precision TIR optics provide more light with less fixtures in application. This results in lower installation costs and higher energy savings while still achieving higher light levels, better uniformity, and consistent light output over a longer life than HID.

### VERSATILE CONFIGURATIONS

Intercept® is available with a variety of distributions, color temperatures, CRI options, and a full suite of integrated controls to provide the best solution for any high output floodlighting application.

### INTERMODAL/SHIPPING

### FLOODLIGHTING

### SPORTS

### APRON

# ELEVATE YOUR GAME

## Product Design

### THERMAL

Dynamic thermal management design maximizes heat dissipation, substantially increasing life of the luminaire.

### SURGE

Built in surge suppression adds an additional layer of protection for the luminaire's driver and electronic components.



### LED MODULES

Scalable LED modules allow for an optimized configuration for different sports and class of play.

### GLARE CONTROL

The Intercept® low glare shields provide industry leading glare reduction with minimal effect on light output.

### OPTICS

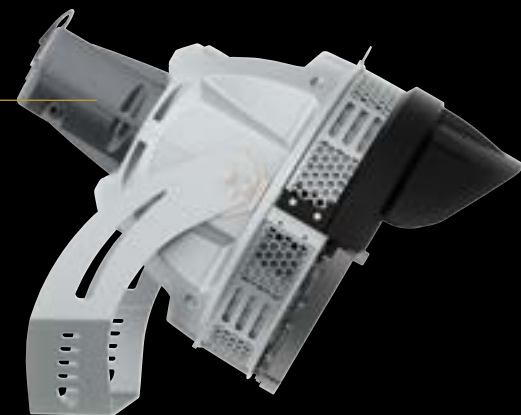
Precision TIR optics place light on target with greater control.

### EMBEDDED CONTROLS

Flexible control solutions allow for individual fixture control for your desired functionality; anywhere from on/off control to a wireless, fully scheduled system.

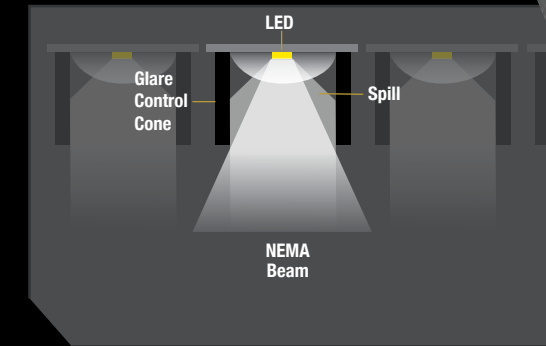
### INTEGRAL DRIVER

With integral or remote driver capabilities, this luminaire gives additional flexibility to fit into a variety of indoor and outdoor applications.



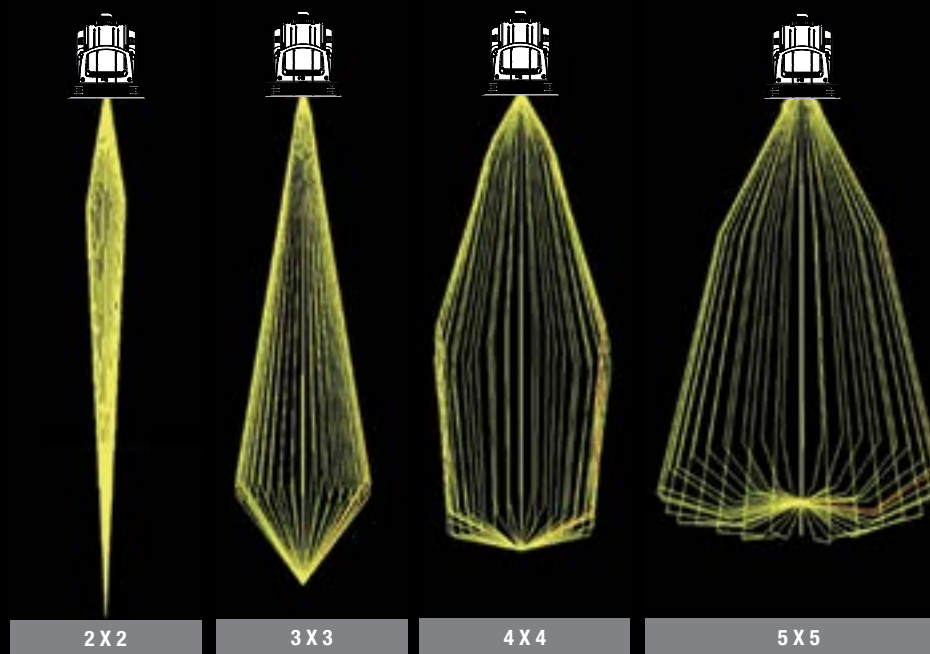
## OPTICS SYSTEM

The louvered design encompasses each optic to reduce spill light without compromising the light within the concentrated beam. This glare control has the ability to reduce the candela per meter<sup>2</sup> outside of the beam by 92% while affecting the lumen output of the product by less than 10%. This results in a 37% reduction in the Glare Rating when compared to the typical LED solution.



## BEAM SPREADS

The Intercept® is available in four beam spreads: 2x2, 3x3, 4x4, 5x5 and 6x6. The variety of beam spreads are excellent for large venue applications and precise areas that require specialized illumination.



2 X 2

3 X 3

4 X 4

5 X 5

# ORDERING

## VFS - General Flood Sports Lighting

SERIES	MOUNT	ENGINE-WATTS		CCT	DISTRIBUTION	VOLTAGE	CORD	CONTROL OPTIONS	OPTIONS
<b>VFS</b> Flood Sports Lighting	<b>Y</b> Yoke <b>UMY</b> Under Mount Yoke	<b>63L-440</b> 440W, 45,000 lm <b>84L-660</b> 660W, 60,000 lm <b>126L-880</b> 880W, 90,000 lm		<b>3K7</b> 3000K, 70 CRI <b>4K7</b> 4000K, 70 CRI <b>5K7</b> 5000K, 70 CRI <b>57K7</b> 5700K, 70 CRI <b>4K8</b> 4000K, 80 CRI <b>5K8</b> 5000K, 80 CRI <b>57K8</b> 5700K, 80 CRI <b>4K9</b> 4000K, 90 CRI <b>5K9</b> 5000K, 90 CRI <b>57K9</b> 5700K, 90 CRI	<b>2</b> 2x2 <b>3</b> 3x3 <b>4</b> 4x4 <b>5</b> 5x5 <b>6</b> 6x6 <b>AV</b> Aviation Optics <sup>1</sup>	<b>277</b> 277V <b>347</b> 347V <b>480</b> 480V	<b>3C</b> 3' Prewired SEOWA cord <b>6C</b> 6' Prewired SEOWA Cord <b>12C</b> 12' Prewired SEOWA Cord	<b>CD</b> Continuous dimming <b>NXWE</b> NX Fixture Module <b>DMX</b> DMX/RDM	<b>LGC</b> Less Glare Control <b>SF</b> Single Fuse <b>DF</b> Double Fuse <b>GL</b> Glass Lens

<sup>1</sup> Includes glass lens

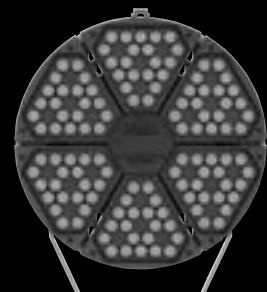
### ACCESSORIES (ORDER SEPARATELY)

ACCESSORIES	
<b>VFSVISOR</b>	Top Visor

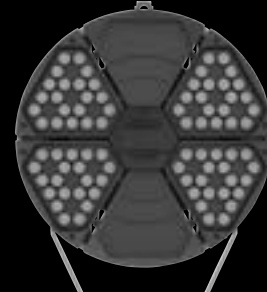
## LUMINAIRE CONFIGURATIONS



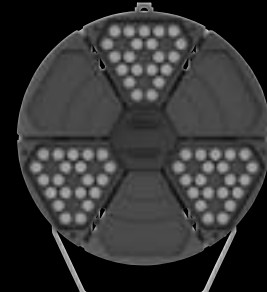
\* Visor shown does not come standard



Six Modules



Four Modules



Three Modules

# INTEGRATED CONTROLS

Embedded control solutions allow for hassle free energy savings and dynamic output at an individual fixture level. The three control solutions available for Intercept® give sporting venues the ability to set a designated schedule, wirelessly adjust their light level, or even create theatrical lighting shows.

Functionality	Controls Solution	Wired	Wireless
Push Button Control	NX LIGHTING CONTROLS	Yes	Yes
Theatrical Control	DMX/RDM System	Yes	



Hubbell Control Solutions' NX Distributed Intelligence™ platform delivers a seamless lighting control solution. NX is capable of scaling from standalone fixture control to networked enterprise deployments. NX operates using wired, wireless and hybrid connectivity with native BACnet™ support.

NX can provide the perfect solution for push button control of the products lighting the field as well as the rest of the facility.

### Truly Intelligent

The Hubbell Control Solutions NX Distributed Intelligence™ lighting control platform is the first of its kind to utilize a distributed network architecture (DNA) which provides users with unmatched system reliability, scalability and simplicity.

### Versatile

NX supports indoor and outdoor applications, wired, wireless and hybrid networked lighting control deployments, and enables emerging applications such as Hubbell Lighting's SpectraSync™ color tuning technology.

DMX is a common standard used in theatrical lighting that specializes in individual fixture control. This allows for complex sequences to be achieved with ease, resulting in an awestruck crowd. Intercept®'s DMX compatibility gives you full control of the fixture's dimming, allowing it to participate in the light show.



Current 

**Current - HLI Brands**

701 Millennium Blvd.  
Greenville, SC 29607

[currentlighting.com/beam](https://www.currentlighting.com/beam)

© 2022 HLI Solutions, Inc. All rights reserved. Information and specifications subject to change without notice. All values are design or typical values when measured under laboratory conditions.

(Rev October 24, 2022 10:12 AM)

HLI\_NIBCEP\jacob\product\HLI0347\01