

Current Lumination®

Dimmer Compatibility List



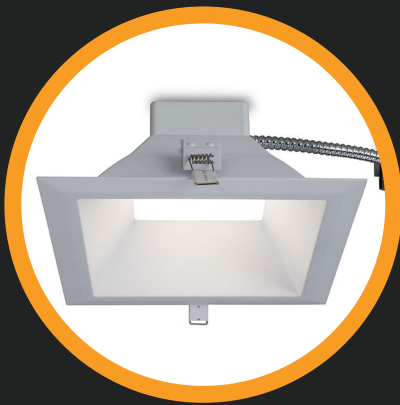
Dimmer Compatibility List for LRX-LDX-LTM Series

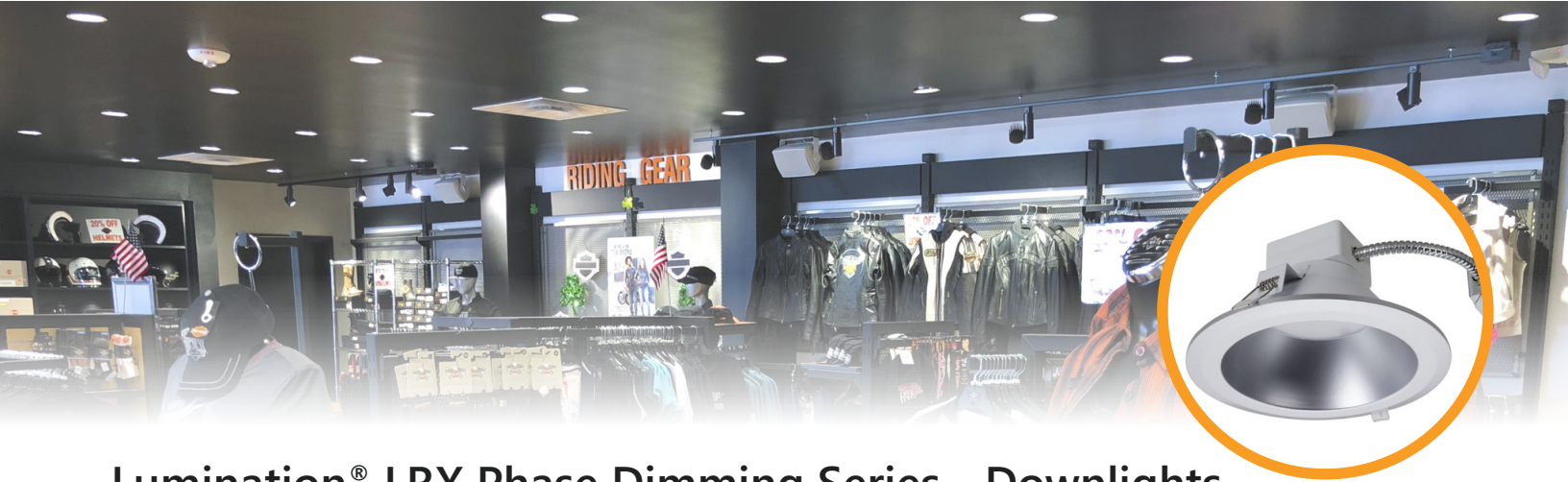
Important Notice

Because dimming equipment, applications, and conditions of use are many, varied, and beyond Current's control, this information is based on limited samples sizes and testing. This list only includes dimmers that have been tested with Current's luminaires listed. There may be other dimmers on the market that are compatible with Current's luminaires. If you have a question about a particular dimmer that is not on the list, please contact Current to see if the model has been tested, or to arrange testing.



For more information and access to all of our resources, including our design tool visit: www.LED.com
Please contact the Fixture Technical Support team for technical questions. lightingprodinfo@currentlighting.com or 1-888-694-3533, Option #2





Lumination® LRX Phase Dimming Series - Downlights

Dimmer			Maximum Quantity of Fixtures That Can Be Connected With One Dimmer				
Dimmer Brand	Model Number	Dimmer Type	4000lm	3000lm	1800lm	1000lm	650lm
Lutron	MRF2-6ELV	Phase cut	3	5	7	13	23
	PD-5NE	Phase cut	6	8	13	/	/
	HW/LP-RPM-4A-120	Phase cut	29	41	63	105	/
	LQSE-4A1-D/MQSE-4A1-D/MQSE-3A1/MQSE-2A1-D, 120V, RP	Phase cut	2	4	6	10	14
	MRF2-6ELV	Phase cut	3	5	7	13	23
	RRD-6NA	Phase cut	3	5	7	13	23
	HQRD-6NA	Phase cut	3	5	7	13	23
	HW/LP-RPM-4A-120	Phase cut	39	41	63	/	/
	LQSE-4A1-D/MQSE-4A1-D/MQSE-3A1/MQSE-2A1-D, 120V, RP	Phase cut	2	4	6	10	24
	PHPM-PA with Grafik Eye QS Main Unit Phase cut	Phase cut	46	66	101	152	/
	PHPM-WBX with 3-wire fluorescent control Phase cut	Phase cut	46	66	101	152	/
Leviton	DDE06	Phase cut	7	10	15	27	42
	DSE06	Phase cut	7	10	15	27	42
	6672	Phase cut	3	5	7	13	21
	6674	Phase cut	3	5	7	13	21
	DDL06-BL	Phase cut	7	10	15	27	42
	DDMX1	Phase cut	10	15	23	40	64
	DSL06	Phase cut	7	10	15	27	42
	DSM10	Phase cut	10	15	23	40	64
	TSL06	Phase cut	7	10	15	27	42
	TSM10	Phase cut	9	13	21	36	57
	IPL06	Phase cut	3	5	7	13	21

NOTE:

Both 1000lm/650lm and 4000lm/3000lm modes are switchable designs, you need push up or push down switch based on which lumen you want to get. Detailed information needs to refer to Lutron Report Card on website at www.lutron.com/ledtool. Detailed information needs to refer to Leviton website at www.Leviton.com.

1. No optical flicker.
2. Noise meet Energy Star requirement.
3. Dimming continuously and smoothly.



Lumination® LRX 0-10V Dimming Series - Downlights

Fixture Version	Dimmer Brand	Dimmer Model	Dimmer Type	Notes/Comments
100/650 Lumen	Lutron	QSN - 4T16 - S	0 - 10V (Sink)	
		GRX-TVI with Grafik Eye QS Main Unit	0 - 10V (Sink)	Low end adjust for start time
		NTFTV / NFTV / DVTV with PP-120	0 - 10V (Sink)	
		TVM2 Module	0 - 10V (Sink/Source)	
		TVI-LMF-2A	0 - 10V (Sink)	Low end adjust for start time
1800/2000 Lumen	Lutron	QSN-4T16-S	0 - 10V (Sink)	Low and high end trim may be required
		GRX-TVI with Grafik Eye QS Main Unit	0 - 10V (Sink)	Low and high end trim may be required
		NTFTV / NFTV / DVTV with PP-120	0 - 10V (Sink)	Low end trim may be required
		TVM2 Module	0-10V (Sink/Source)	Low and high end trim may be required
		TVI-LMF-2A	0 - 10V (Sink)	Low and high end trim may be required
3000 Lumen	Lutron	QSN-4T16-S	0 - 10V (Sink)	
		GRX-TVI with Grafik Eye QS Main Unit	0 - 10V (Sink)	Low and high end trim may be required
		NTFTV / NFTV / DVTV with PP-120	0 - 10V (Sink)	
		TVM2 Module	0-10V (Sink/Source)	Low and high end trim may be required
4000/5000 /6000 Lumen	Lutron	NTSTV-DV	0 - 10V (Sink)	
	Leviton	NOM057	0 - 10V (Sink)	

NOTE:

Both 1000lm/650lm and 4000/5000/6000lm modes are switchable designs, you need push up or push down switch based on which lumen you want to get. Detailed information needs to refer to Lutron Report Card on website at www.lutron.com/ledtool. Detailed information needs to refer to Leviton website at www.Leviton.com.

1. No optical flicker.
2. Noise meet Energy Star requirement.
3. Dimming continuously and smoothly.



Lumination® LRX Series - Disk & Gimbal - Downlights

Fixture Version	Dimmer Brand	Dimmer Model	Dimmer Type	Notes/Comments
100/650 Lumen	Lutron	QSN - 4T16 - S	0 - 10V (Sink)	
		GRX-TVI with Grafik Eye QS Main Unit	0 - 10V (Sink)	Low end adjust for start time
		NTFTV / NFTV / DVTV with PP-120	0 - 10V (Sink)	
		TVM2 Module	0 - 10V (Sink/Source)	
		TVI-LMF-2A	0 - 10V (Sink)	Low end adjust for start time
1800/2000 Lumen	Lutron	QSN-4T16-S	0 - 10V (Sink)	Low and high end trim may be required
		GRX-TVI with Grafik Eye QS Main Unit	0 - 10V (Sink)	Low and high end trim may be required
		NTFTV / NFTV / DVTV with PP-120	0 - 10V (Sink)	Low end trim may be required
		TVM2 Module	0-10V (Sink/Source)	Low and high end trim may be required
		TVI-LMF-2A	0 - 10V (Sink)	Low and high end trim may be required
3000 Lumen	Lutron	QSN-4T16-S	0 - 10V (Sink)	
		GRX-TVI with Grafik Eye QS Main Unit	0 - 10V (Sink)	Low and high end trim may be required
		NTFTV / NFTV / DVTV with PP-120	0 - 10V (Sink)	
		TVM2 Module	0-10V (Sink/Source)	Low and high end trim may be required
4000/5000 /6000 Lumen	Lutron	NTSTV-DV	0 - 10V (Sink)	
	Leviton	NOM057	0 - 10V (Sink)	

NOTE:

Both 1000lm/650lm and 4000/5000/6000lm modes are switchable designs, you need push up or push down switch based on which lumen you want to get. Detailed information needs to refer to Lutron Report Card on website at www.lutron.com/ledtool. Detailed information needs to refer to Leviton website at www.Leviton.com.

1. No optical flicker.
2. Noise meet Energy Star requirement.
3. Dimming continuously and smoothly.



Lumination® LDX Series - Downlights

Fixture Version	Dimmer Brand	Dimmer Model	Dimmer Type	Notes/Comments
1000 Lumen	Lutron	QSN - 4T16 - S	0 - 10V (Sink)	
		GRX-TVI with Grafik Eye QS Main Unit	0 - 10V (Sink)	Low end adjust for start time
		NTFTV / NFTV / DDTV with PP-120	0 - 10V (Sink)	
		TVM2 Module	0-1(Sink/Source)	
		TVI-LMF-2A	0 - 10V (Sink)	Low end adjust for start time
1500 Lumen	Lutron	QSN-4T16-S	0 - 10V (Sink)	Low and high end trim may be required
		GRX-TVI with Grafik Eye QS Main Unit	0 - 10V (Sink)	Low and high end trim may be required
		NTFTV / NFTV / DDTV with PP-120	0 - 10V (Sink)	Low end trim may be required
		TVM2 Module	0-10V (Sink/Source)	Low and high end trim may be required
		TVI-LMF-2A	0 - 10V (Sink)	Low and high end trim may be required
2000 Lumen	Lutron	QSN-4T16-S	0 - 10V (Sink)	Low and high end trim may be required
		GRX-TVI with Grafik Eye QS Main Unit	0 - 10V (Sink)	Low and high end trim may be required
		NTFTV / NFTV / DDTV with PP-120	0 - 10V (Sink)	Low end trim may be required
		TVM2 Module	0-10V (Sink/Source)	Low and high end trim may be required
		TVI-LMF-2A	0 - 10V (Sink)	Low and high end trim may be required
3000 Lumen	Lutron	QSN-4T16-S	0 - 10V (Sink)	
		GRX-TVI with Grafik Eye QS Main Unit	0 - 10V (Sink)	Low and high end trim may be required
		NTFTV / NFTV / DDTV with PP-120	0 - 10V (Sink)	
		TVM2 Module	0-10V (Sink/Source)	Low and high end trim may be required
		TVI-LMF-2A	0 - 10V (Sink)	Low and high end trim may be required
4000 Lumen	Lutron	QSN - 4T16 - S	0 - 10V (Sink)	Low and high end trim may be required
		GRX-TVI with Grafik Eye QS Main Unit	0 - 10V (Sink)	Low and high end trim may be required
		NTFTV / NFTV / DDTV with PP-120	0 - 10V (Sink)	Low and high end trim may be required
		TVM2 Module	0-10V (Sink/Source)	
		TVI-LMF-2A	0 - 10V (Sink)	Low and high end trim may be required



Lumination® LTM Series - Track Lights

Fixture Version	Dimmer Brand	Dimmer Model	Dimmer Type	Notes/Comments
LTM	Cooper/Eaton	iLumin SC-UN-FT	Forward	Flickers below 20%
	Lutron	Skylark S-600P	Forward	
		Skylark S-600	Forward	
		VareoV-600	Forward	
		AriadniAY-600PNL	Forward	
		N/A D-600P	Forward	
		Diva DV-600P	Forward	
		Skylark SELV-300P	Reverse	
		Lutron NTELV-600	Reverse	
	Leviton	N/A 6161	Forward	
		Illumatech IPL06	Forward	
		Illumatech IPL06	Forward	
	ETC	ELV10 7183A1017	Reverse	
		ELVD -Echo 7187A1031	Reverse or Forward	



Current

Current - GLI Brands

25825 Science Park
Beachwood, OH 44122

LED.com

© 2023 Current Lighting Solutions, LLC. All rights reserved. Information and specifications subject to change without notice. All values are design or typical values when measured under laboratory conditions.

(Rev 04/19/23)

<Product Doc Number>