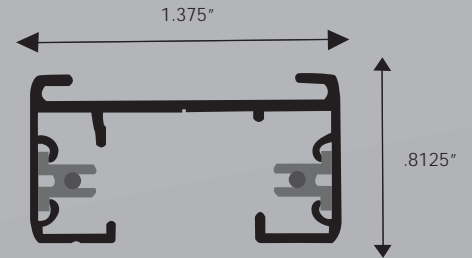


GES Lighting Track System

- High quality, UL listed 1-cct/1-neutral lighting track system, 120V
- Low profile, easy & flexible installation
- Open architecture — ready for your fixtures now!

Global GES 1-cct/1-neutral is engineered to be a durable, dependable and simple-to-install lighting solution. The track's extruded aluminum construction and continuously crimped conductor ensure mechanical strength and electrical reliability. The integral suspension rail and predrilled mounting holes of the track simplify the installation process.



Curved track available upon request.



GES Lighting Track System

1-circuit track (GES) ORDERING INFORMATION

LENGTHS* - 4', 8', 12'

COLOR CODES - WHITE (-3), BLACK (-2), GREY (-1)

NOMINAL LGTH	ACTUAL LGTH	ONE CIRCUIT
4-feet	44-inches	GES 204-(color)
8-feet	92-inches	GES 208-(color)
12-feet	140-inches	GES 212-(color)

Example: 8-foot track section in black: GES 208-2

* ACTUAL LENGTHS DIFFER FROM NOMINAL LENGTHS TO ACCOMMODATE MODULARITY IN GRID APPLICATIONS.



1. Suspension Hardware Rail

Provides fastening point for suspension hardware, also serves as an attachment point for the unique, load-bearing metal backplate featured on *eco* feeds and connectors, ensuring a secure connection.

2. Milled Grounding Bar

Provides continuous ground contact for fixtures anywhere along the track run.

3. Alignment Groove

Provides easy centering for screws.

4. Bus Bar Installation

Conductor and insulation assembly is crimped continuously into place along the track profile, and is guaranteed not to slip for the life of the product, regardless of whether or not the track has been field cut.

5. Extruded Channel

Constructed of strong, extruded aluminum. Impervious to corrosion.

6. Predrilled Mounting Holes

For installation convenience. Tracks ship from the factory with predrilled mounting holes spaced per UL and NEC guidelines.

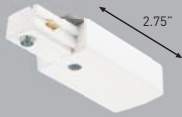


patented FEED CONNECTORS with PATENTED BACKPLATE SUSPENSION CONTACT

A unique backplate feature provides additional strength by mechanically integrating track and connectors into one continuous system.

- 1 Heavy-gauge steel backplate provides independent mechanical support.
- 2 Copper conductor never bears mechanical load. Held in place by continuous crimp insulator to ensure reliable electric contact.
- 3 Durable GE Lexan® components. Soft finish reduces fingerprints.

GES Track Components



LIVE END FEED

GES 11 (-1, -2, -3)



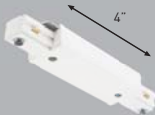
CONDUIT END FEED

GES 13 (-1, -2, -3)



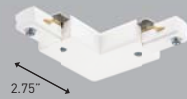
LINEAR COUPLER

GES 21 (-1, -2, -3)



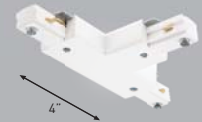
LIVE MIDDLE FEED

GES 14 (-1, -2, -3)



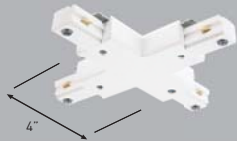
FEEDABLE L-CONNECTOR

Right/ Left Configurable
GES 34 (-1, -2, -3)



FEEDABLE T-CONNECTOR

Right/ Left Configurable
GES 40 (-1, -2, -3)



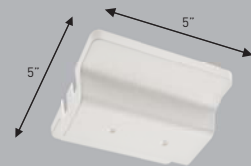
FEEDABLE X-CONNECTOR

GES 38 (-1, -2, -3)



MONOPOINT

GES 70 **(-2, -3) **Monopoint only compatible with TS/LTS/LTM Series



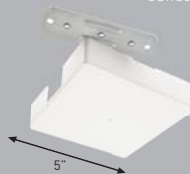
FLOATING FEED

GES 67 (-2, -3)



CONDUIT CONT. KIT

Jumpers track runs around obstacles.
GES 13 & GES 16 (-1, -2, -3)



T-BAR FEED KIT

For use with eco GES connectors 11, 14, 34, 38, 39, and 40
GES 17 (-2, -3)



CURRENT LIMITING DEVICE

[Circuit breaker provided by others]
GES 11CB **(-1,-2,-3)

**Circuit breaker not included.. For use with Airpax/Snapax R11 Series.



OUTLET BOX COVER

For use with any eco connector.
GES 15 (-1, -2, -3)



DEAD ENDS

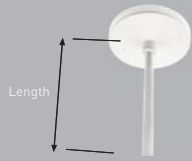
Included with live end feeds, conduit feeds, linear couplers, straight feed connectors, and L, T, & X feed connectors. Also sold separately.
GES 41 (-1, -2, -3)



TRACK REINFORCEMENT PLATE

Strengthens mechanical connection between track sections when a linear coupler is utilized.
GES 21

Mounting / Suspension



STEM KITS

Includes stem and canopy.
Available in 12, 18, 24, and 48 inch lengths.
GEA 37/ (length) (-2, -3)



UNIVERSAL STEM SUSPENSION POINT

GEA 10 (-2, -3)



TWIST/LOCK MOUNTING CLIPS

GEA 6 (-1)
GEA 7 (-2, -3)



STEM KITS HARDWARE

← Included with **GEA 37**



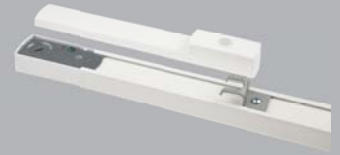
1/4" THREADED ROD MOUNTING CLIP

GEA 6



CABLE MOUNT

Ceiling Cup- **SKB 30** (-2, -3)
Aircraft Cable- **SKB 34** (5', 9', 15' lengths)
Track Clip- **GEA 12** (-1)



END FEED STEM SUSPENSION POINT

Includes bracket and cover. Stem not included.
GEA 11 (-2, -3)



T-BAR MOUNTING CLIP

Available in 15/16" and 9/16"
GEA 7

PRODUCT ORDERING COLOR CODES

White (-3) Black (-2) Grey (-1)

GE Part Number	Description
GEA10-2	GLOBAL ECO UNIVER STEM SUSPEN POINT BLK
GEA10-3	GLOBAL ECO UNIVER STEM SUSPEN POINT WHT
GEA11-2	GLOBAL ECO END FEED STEM SUSP POINT BLK
GEA11-3	GLOBAL ECO END FEED STEM SUSP POINT WHT
GEA12-1	TRACK CLIP
GEA21-1	REINFORCEMENT PLATE
GES11-2	GLOBAL ECO 1CCT LIVE FEED+CAP BLK
GES11-3	GLOBAL ECO 1CCT LIVE END FEED CAP WHT
GES11CB-2	1CCT CURRENT LIMITER END FEED BLACK
GES11CB-3	1CCT CURRENT LIMITER, END FEED WHITE
GES12CB-2	1CCT CURRENT LIMITER ENDFEED MIRROR BLK
GES12CB-3	1CCT CURRENT LIMITER END FEED MIRROR WHT
GES13-16-2	GLOBAL ECO 120V CONDUIT CONNECT BLK
GES13-16-3	GLOBAL ECO 120V CONDUIT CONNECT WHT
GES13-2	GLOBAL ECO, 1CCT, CONDUIT END FEED BLK
GES13-3	GLOBAL ECO 1CCT, CONDUIT END FEED, WHT
GES14-2	GLOBAL ECO 1CCT, MIDDLE FEED, BLK
GES14-3	GLOBAL ECO 1CCT STR FEED CONNECTOR WHT
GES14CB-2	1CCT, CURRENT LIMITER MID FEED, BLK
GES14CB-3	1CCT, CURRENT LIMITER, MID FEED, WHT
GES15-2	OUTLET BOX COVER BLACK,
GES15-3	OUTLET BOX COVER WHITE
GES17-2	T-BAR FEED KIT,BLACK,
GES17-3	T -BAR FEED KIT, WHITE,
GES204-2	GLOBAL ECO 1CCT, 4FT, BLACK
GES204-3	GLOBAL ECO 1CCT, 4FT TRACK WHITE
GES208-2	GLOBAL ECO, 1CCT, 8FT TRACK BLACK
GES208-3	GLOBAL ECO 1CCT, 8FT TRACK WHITE
GES21-2	GLOBAL ECO 1CCT, LINEAR COUPLER BLK
GES21-3	GLOBAL ECO , 1CCT,LINER COUPLER WHT
GES212-2	GLOBAL ECO 1CCT, 12 FT TRACK BLACK,
GES212-3	GLOBAL ECO 1CCT , 12 FT TRACK WHITE
GES34-2	GLOBAL ECO,1CCT -L CONNECTOR, BLK
GES34-3	GLOBAL ECO,1CCT, L-CONNECTOR, WHT
GES38-2	GLOBAL ECO, 1CCT, X-CONNECTOR, BLK
GES38-3	GLOBAL ECO, 1CCT, X-CONNECTOR, WHT
GES39-40-2	GLOBAL ECO, T-CONNECTOR, BLK
GES39-40-3	GLOBAL ECO, T-CONNECTOR, WHT
GES41-2	GLOBAL ECO, END CAP, BLK
GES41-3	GLOBAL ECO, END CAP , WHT
GES67-2	GLOBAL ECO 1CCT, FLOATING FEED, BLK
GES67-3	GLOBAL ECO 1CCT, FLOATING FEED, WHT
GES70-2	GLOBAL ECO, MONOPOINT, BLACK, 2DD4
GES70-3	GLOBAL ECO , MONOPOINT, WHITE, 2DD5
SKB30-2	CEILING CUP, BLACK,

SKB30-3	CEILING CUP, WHITE,
SKB34-1	SUSPENSION WIRE 5 FT,
GEA37-12-2	GLOBAL ECO STEM & CANOPY 12 IN BLK 1/4
GEA37-12-3	GLOBAL ECO STEM & CANOPY 12 IN WHT 1/4
GEA37-18-2	GLOBAL ECO STEM & CANOPY 18 IN BLK 1/4
GEA37-18-3	GLOBAL ECO, STEM & CANOPY 18 IN WHT 1/4
GEA37-24-2	GLOBAL ECO, STEM & CANOPY 24 IN BLK 1/4
GEA37-24-3	GLOBAL ECO, STEM & CANOPY 24 IN WHT 1/4
GEA37-48-2	GLOBAL ECO, STEM & CANOPY 48 IN BLK 1/4
GEA37-48-2	GLOBAL ECO, STEM & CANOPY 48 IN WHT 1/4
GEA6-1	THREADED ROD MOUNTING CLIP
GEA7	T-BAR MOUNTING CLIP
93054652	GEA 7-9/16-2 T BAR MOUNTING CLIP BLK
95023346	ADAPTER BODY
95023345	ADAPTER.iBODY
95023344	ADAPTER.BODY