

LITECONTROL
making light work™

FLOW

WET LOCATION
LIGHTING
SOLUTIONS



Current 

FLOW

Flow is a line of wet-rated rectilinear luminaires which shares similar design language as your favorite indoor Litecontrol products, offering design consistency across all of your indoor and outdoor configurations.

Variable Intensity

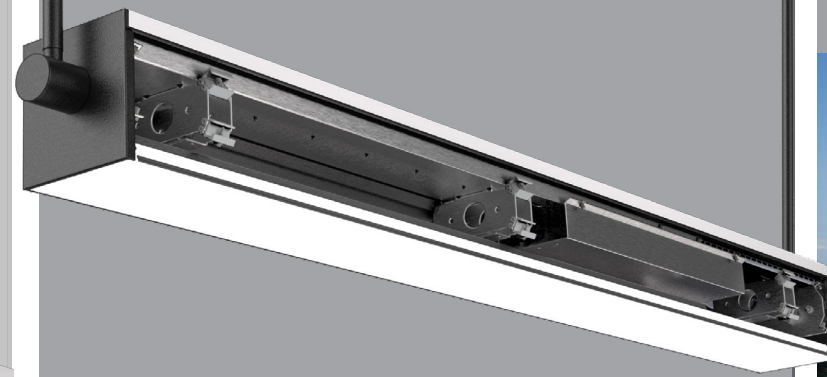
TECHNOLOGY

Variable Intensity Technology is a simple method for specification of luminaire lumens and wattage to meet the exacting demands of each project. Vi Technology provides verifiable wattage for compliance with programs, agencies and state and local codes.



Construction

- Machined aluminum housing end headers and end caps
- Closed-cell silicon gasketing
- Extruded acrylic diffusers



Ordering Info

Flow is a capable solution for both indoor and outdoor environments, limited only by a designer's imagination.

Series	
91L	Flow
Mounting	
P	Pendant
S	Surface
W	Wall
DW	Recessed Drywall
Distribution	
D	Direct
I	Indirect
ID	Indirect/Direct
Aperture	
2	2"
3	3"
4	4"
Uplight Distribution	
STD	Standard
Row Length (In Feet)	
___'	Enter in foot increments
Max Length in Row	
02	2', 609mm
03	3', 914mm
04	4', 1219mm
05	5', 1524mm
06	6', 1828mm
08	8', 2438mm
Diffuser	
SOF	Soft Diffuse Lens, Lambertian
Finish/Color	
C1	Matte White (Default)
C4	Machined Aluminum
C5	Carbon Black
CC	Custom Color
CCT/CRI	
30K	3000K, 80CRI
35K	3500K, 80CRI
40K	4000K, 80CRI



Indirect Output/Ft		Direct Output/Ft	
I045	450 (Min) to 1500 (Max)	D045	450 (Min) to 1500 (Max)
I150		D150	

Driver	
D01	1% Dimming, 0-10V

Circuiting	
1C	1 Circuit
2C	2 Circuit - Uplight/Downlight

Voltage	
UNV	120-277V

Mounting Kit	
<u>Pendant</u>	
H72	72" Pendant
<u>Wall</u>	
WM	Standard Wall Mount
A3	3" Adjustable Arm
A6	6" Adjustable Arm
A12	12" Adjustable Arm
F3	3" Fixed Arm
F6	6" Fixed Arm
F12	12" Fixed Arm

Nightlight	
NL	Nightlight Circuit Required

Emergency	
EF	10W Emergency Battery Backup

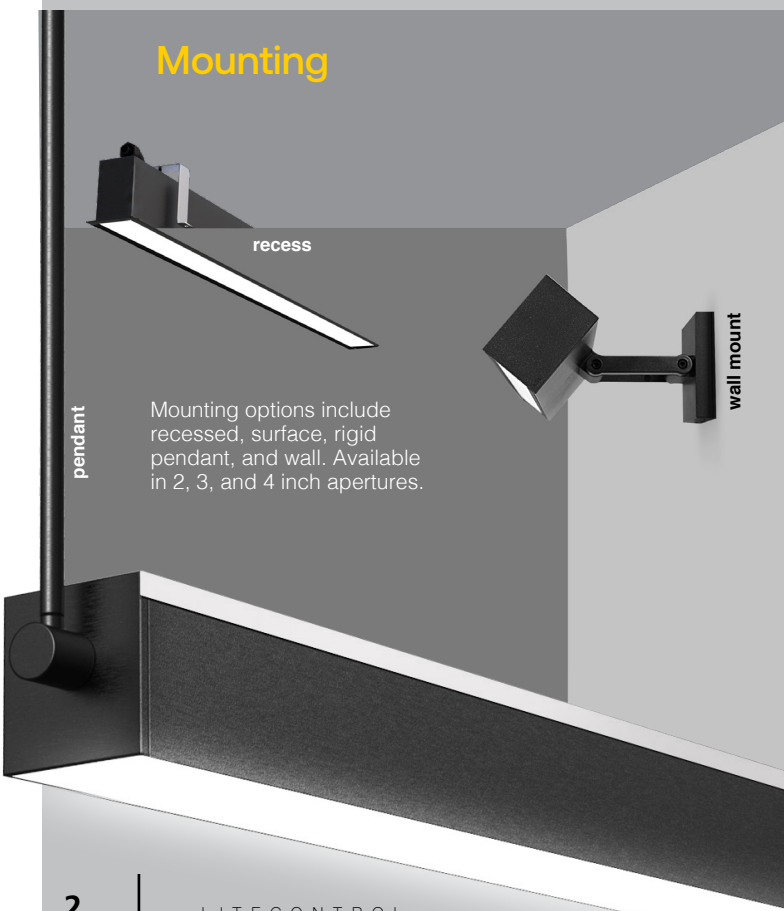
Thru-Wiring	
W1	No Thru-Wire
W2	Provide Normal and NL/EF Thru-Wiring
W3	Provide Normal Thru-Wiring Only

Patterns	
C90L	Illuminated 90° Corner

NX/Controls	
Consult Factory	

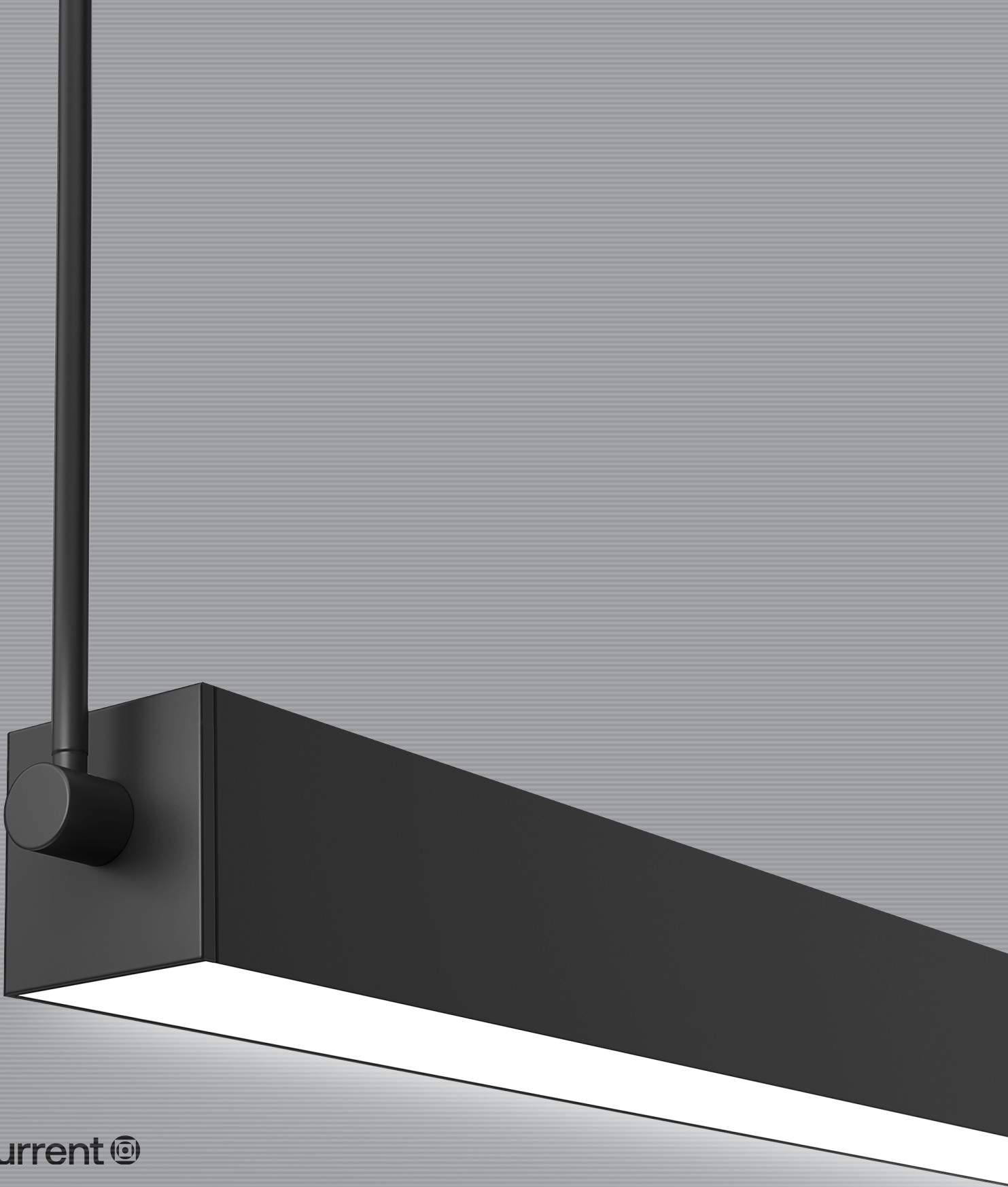
Note: For overview purposes only. Not all options are available in combination. For complete ordering information, see specification sheets.

Mounting



Mounting options include recessed, surface, rigid pendant, and wall. Available in 2, 3, and 4 inch apertures.





Current 

Current Lighting Solutions, LLC

701 Millennium Blvd.
Greenville, SC 29607

[currentlighting.com/litecontrol](https://www.currentlighting.com/litecontrol)

© 2022 HLI Solutions, Inc. All rights reserved. Information and specifications subject to change without notice.
All values are design or typical values when measured under laboratory conditions.

Rev 05/08/23

LC_Flow_lit_R08
