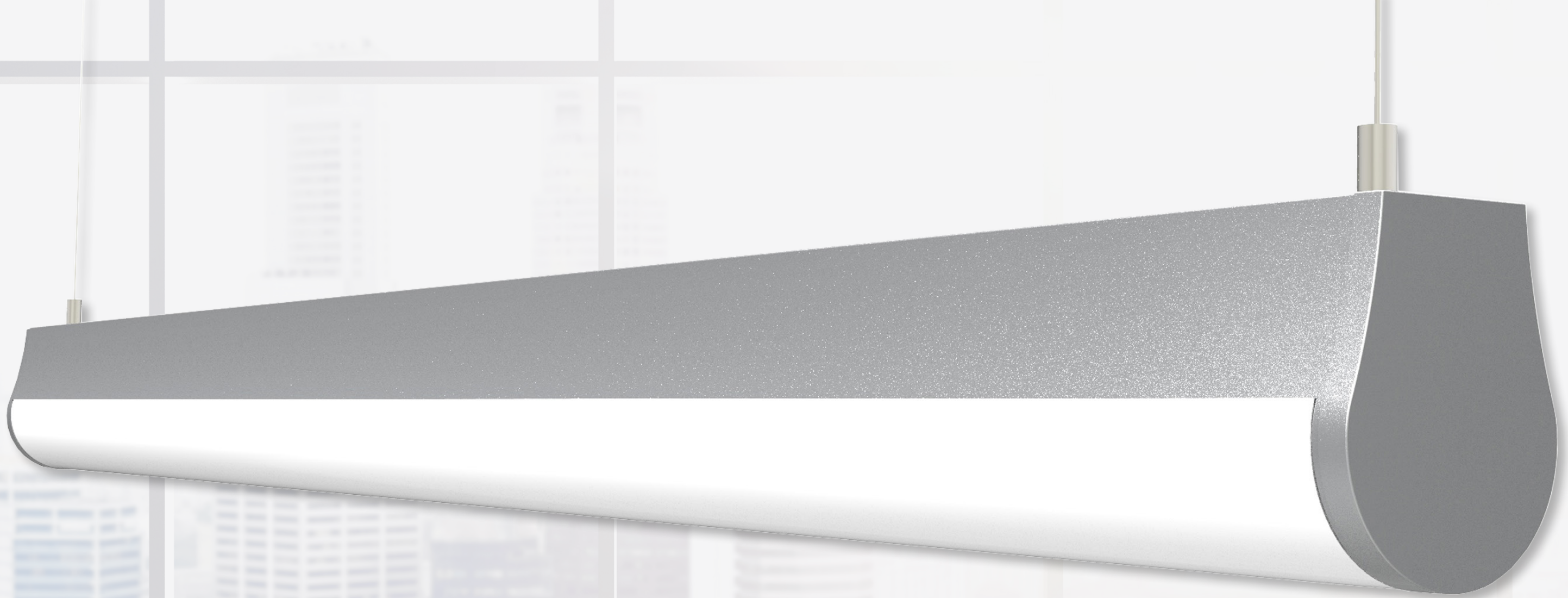


NOTE

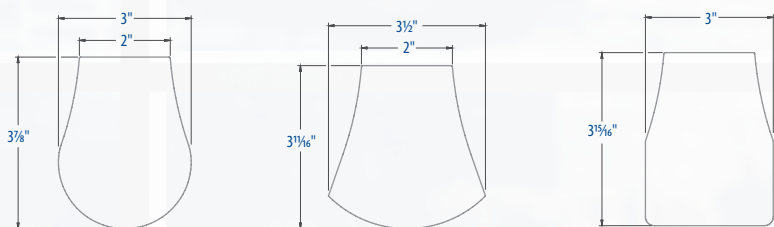


The DOME lens is a soft clean form; a continuous profile between lens and housing.

NOTE 67L

Fresh and contemporary styling that brings direct illumination, performance and versatility, all within a slim profile.

Providing three lens design selections with Pendant, Surface and Wall mounting options to complement a variety of environments and applications.



The BELL lens adds a stylish flair with crisp corners and soft arches.

The SQUARE lens evokes a classic look in a modern form.

Why Use VI® Technology?

VI® Technology provides verifiable wattage for compliance with programs, agencies, state, and local codes.

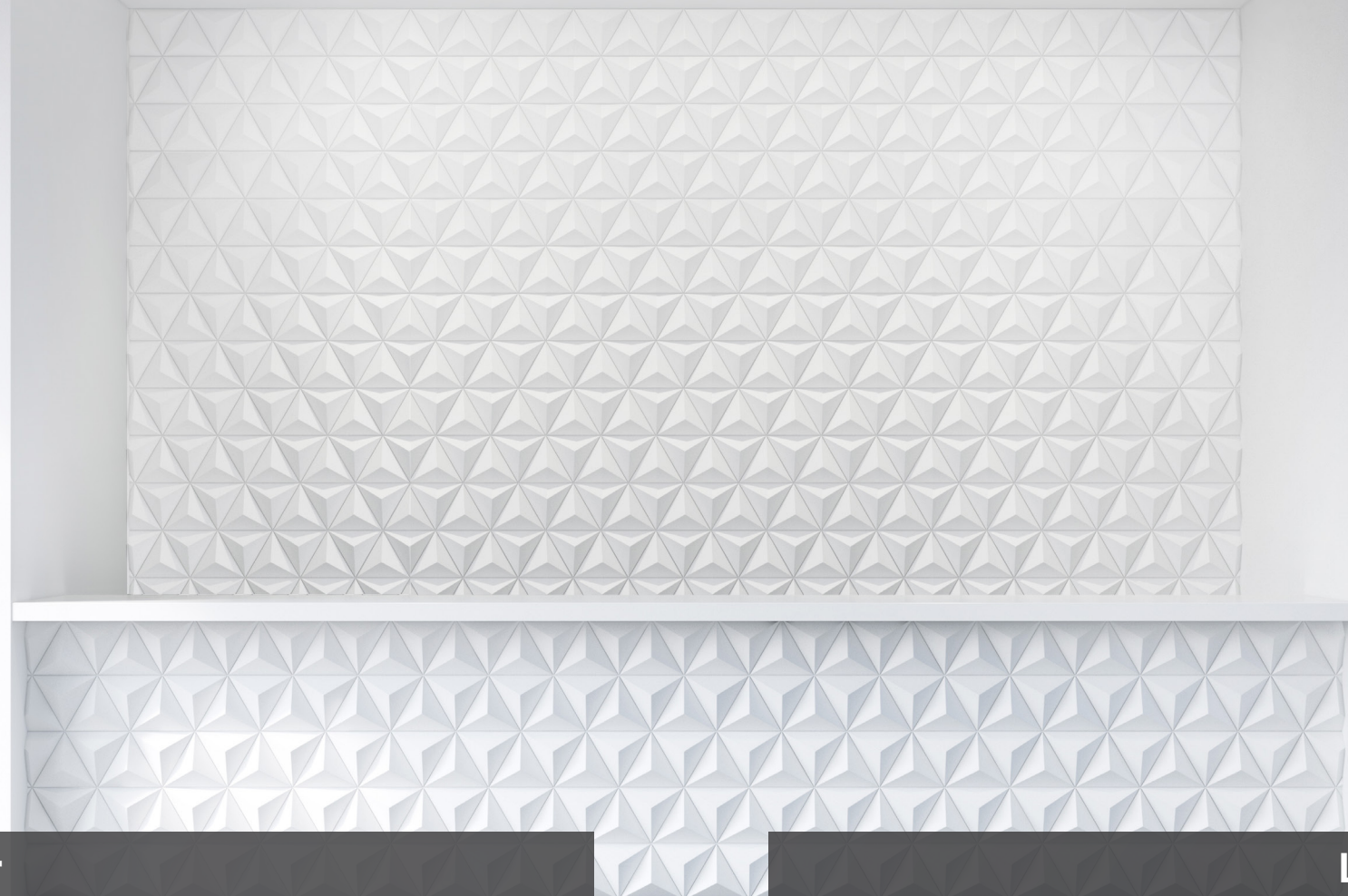
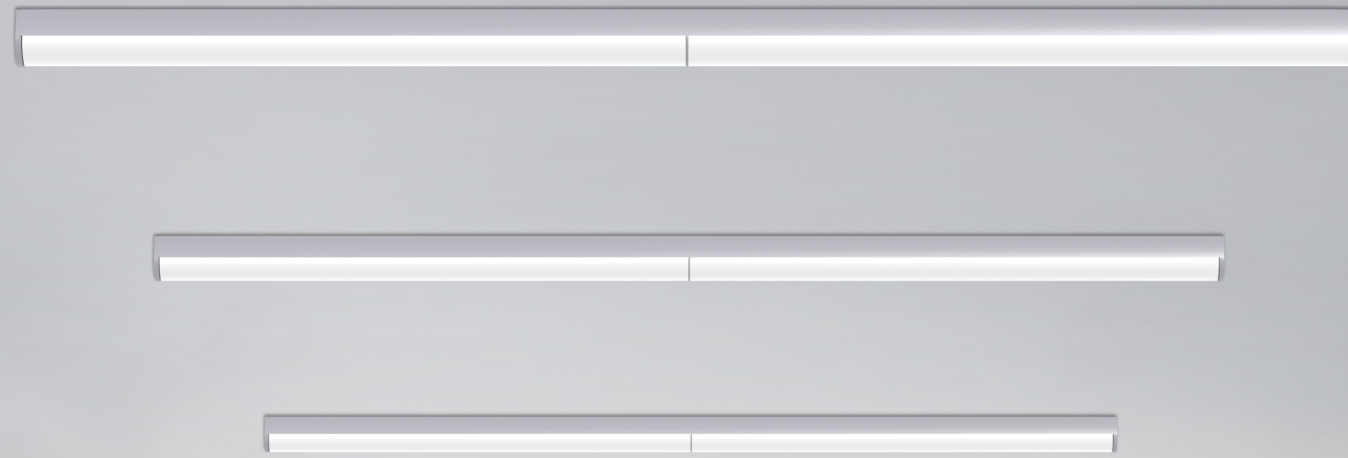
1. Specify light output required to achieve desired illuminance

Driven by application need, not limited fixture options

2. Specify fixture wattage to meet power density requirements

Fixture labeled to your specification means no lost watts in your energy calculation.

Litecontrol's VI® technology module allows specification of LED light output to meet precise needs.



Specifier

STEP 1: Choose



Choose lumen output based on:

- Power density
- Light levels

STEP 2: Specify



Specify based on the published output range:

- In 50 lumen increments per foot (ex: 500, 550, 600)

Litecontrol

STEP 3: Manufacturer



Litecontrol designs and manufactures luminaire to specifications.

STEP 4: Verification

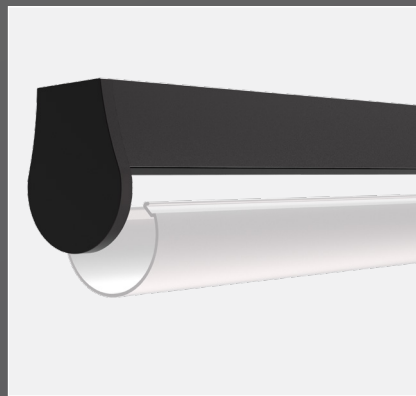


Product arrives on site with clear, precise labeling, allowing wattage calculations based on actual versus highest possible values.

KEY FEATURES

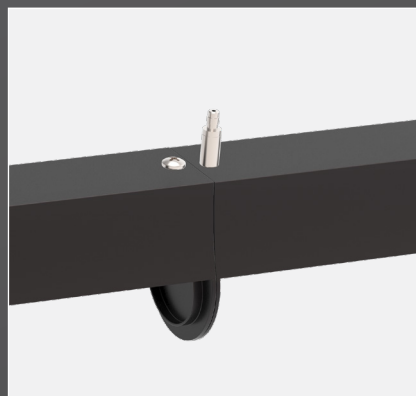
- Variable Intensity® Technology
- SpectraSync™ Color Tuning Technology available
- Up to 127 LPW
- Output range from 550-2000 lumens/ft
- Pendant, Surface & Wall Mount
- Removable Lens

Lens Removal



Row Mounting

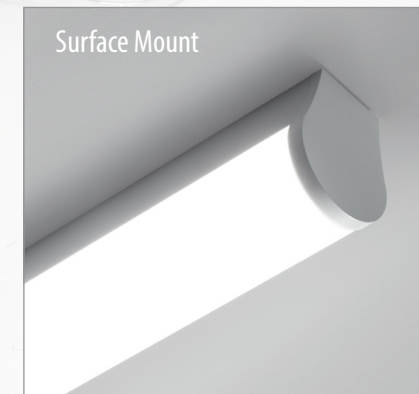
Row connection is simple and straightforward, with a tight and secure fit.



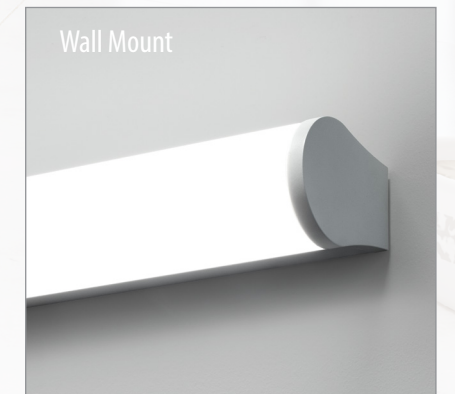
Suspended



Surface Mount



Wall Mount



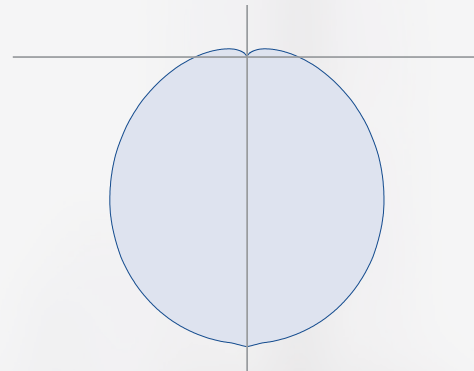
PERFORMANCE

VI® Technology Standard (STD) Direct Light Distribution

Note Layout

Fixture Utilized	67L-P-4-4-DM-C1-35K-D085		
Lumen Output, Direct	D085 (850 lm/ft)		
Ceiling Height	9'		
Room Size	40' x 25'		
Fixture Layout	(3) 20' Rows		
Fixture AFF	7.5'		
Distance to Ceiling Plane	1.5'		

Lighting Goals	Specification	Note Achieves	Exceeds Goal By
Workplane	Minimum Average fc 35fc	43 fc	23%
LPD, 1000 square feet	Maximum Allowance 0.50	0.426	15%



NOTE provides 550 to 2000 lumens/ft
Fixture utilized in layout: 850 lumens/ft

Room Size: 40'x25'

12'												12'											
*18.3	*26.6	*36.3	*37.3	*29.7	*24.4	*24.7	*30.6	*38.9	*38.9	*30.6	*24.7	*24.4	*29.7	*37.3	*36.4	*26.6	*18.3						
*22.5	*35.2	*31.0	*32.0	*38.9	*30.0	*30.3	*39.9	*53.9	*53.9	*39.9	*30.3	*30.0	*38.9	*52.1	*51.0	*35.2	*22.5						
*25.7	*40.5	*58.7	*60.0	*44.7	*34.2	*34.6	*45.8	*62.0	*62.0	*45.8	*34.6	*34.3	*44.7	*60.1	*58.7	*40.5	*25.7						
*27.5	*43.1	*62.2	*63.6	*47.7	*36.8	*37.1	*48.8	*65.6	*65.6	*48.8	*37.2	*36.8	*47.7	*63.6	*62.2	*43.2	*27.5						
*28.4	*44.3	*63.3	*64.7	*49.0	*38.1	*38.5	*50.1	*67.0	*67.0	*50.1	*38.4	*38.1	*49.0	*64.5	*63.4	*44.3	*28.4						
*28.7	*44.6	*63.9	*65.3	*49.4	*38.5	*38.8	*50.6	*67.5	*67.5	*50.6	*38.8	*38.5	*49.5	*65.3	*63.8	*44.6	*28.7						
*28.4	*44.3	*63.3	*64.7	*49.0	*38.1	*38.5	*50.1	*67.0	*66.9	*50.1	*38.4	*38.1	*49.0	*64.5	*63.4	*44.3	*28.4						
*27.5	*43.2	*62.1	*63.6	*47.7	*36.8	*37.1	*48.8	*65.6	*65.6	*48.9	*37.2	*36.8	*47.7	*63.6	*62.1	*43.2	*27.5						
*25.7	*40.5	*58.7	*60.0	*44.7	*34.2	*34.6	*45.8	*61.9	*61.9	*45.8	*34.6	*34.3	*44.7	*60.0	*58.7	*40.5	*25.7						
*22.5	*35.2	*50.9	*52.1	*38.8	*30.0	*30.3	*39.9	*53.8	*53.8	*39.9	*30.3	*30.0	*38.9	*52.1	*51.0	*35.2	*22.5						
*18.3	*26.6	*36.3	*37.3	*29.7	*24.4	*24.7	*30.6	*38.9	*39.0	*30.6	*24.7	*24.4	*29.7	*37.3	*36.3	*26.6	*18.3						

Workplane (40'x25')			
AVG	MAX	MIN	MAX/MIN
43	68	18	3.7
Ceiling			
AVG	MAX	MIN	MAX/MIN
9	11	6	1.7
LPD			
.426			

Reflectances: 80/50/20 Light Loss Factors: 1.00/0.90/0.90 Fixture Utilized: 67L-P-4-4-DM-C1-35K-D085

SpectraSync™ Color Tuning Technology



SpectraSync™ is an easy and intuitive white tuning solution offered in two modes to accommodate a variety of applications.

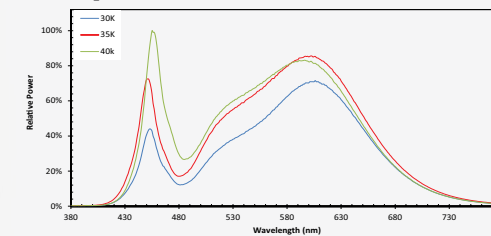
Control your space based on the needs of the application, specific activities throughout the day and preferences of the occupants with two distinct SpectraSync™ Color Tuning Technology. See separate SpectraSync™ Tech Sheet for additional details. See separate NX Guide for additional details.

Color Characteristics

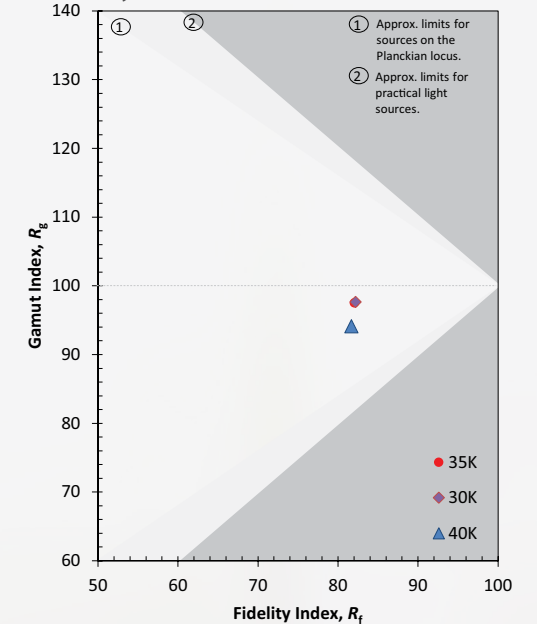
Color Data

	Ordering Code		
Value	30K	35K	40K
Rf	82	82	82
Rg	98	98	94
CCT (K)	3055	3479	4015
Duv	-0.0018	-0.0009	-0.0007
x	0.4306	0.4055	0.3793
y	0.3974	0.3888	0.3746
CIE Ra	83	83	85

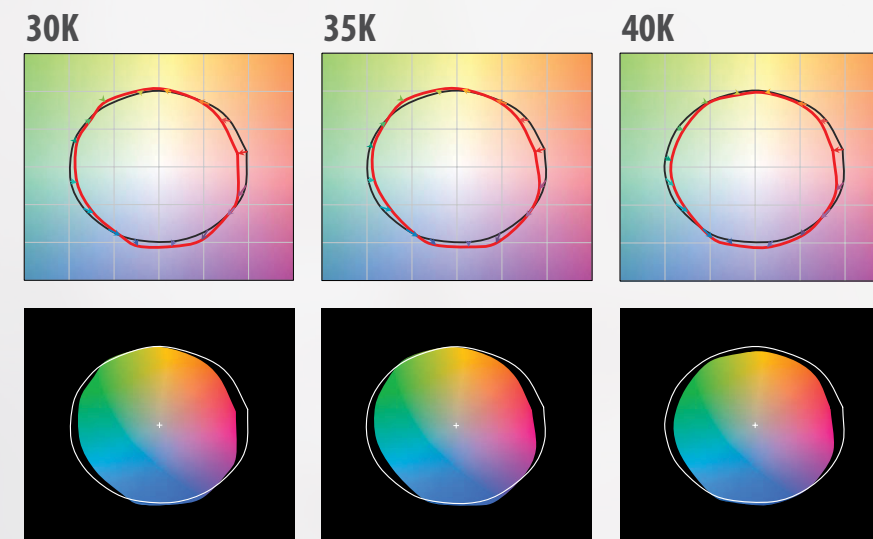
Spectral Power Distribution



Fidelity



NOTE delivers architecturally appropriate color performance as measured by the latest industry-accepted metrics.



Color Rendering

CCT	CRI	R1	R2	R3	R4	R5	R6	R7	R8	R9	R10	R11	R12	R13	R14
30K	83	82	91	96	81	82	88	84	62	14	77	80	68	84	98
35K	83	82	89	94	82	82	85	86	66	16	73	81	64	83	96
40K	85	84	92	96	81	83	87	86	68	19	79	80	60	86	98

Rated Life

- L70: 257,000 (calculated per TM-21 extrapolated curve)
- L70: >61,000 (reported per TM-21/LM80 6x's limitation)
- L90: 66,000 (calculated per TM-21 extrapolated curve)
- L90: >61,000 (reported per TM-21/LM80 6x's limitation)

Warranty

- 5 years

ORDERING INFORMATION

Feature	Options	Description
Series	67L	Note
Mounting	P	Pendant
	S	Surface
	W	Wall (ADA Compliant)
Fixture Distribution	D	Direct
Row Length (in feet)	___'	Enter in foot increments. Note fixture lengths below.
Max Length in Row	02	2', 610mm
	03	3', 914mm
	04	4', 1219mm
	06	6', 1829mm
	08	8', 2438mm
Lens Type	DM	Dome
	BL	Bell
	SQ	Square
Finish/Color	C1	CWM - Matte White
	C2	TCWM - Textured, Matte White
	C3	CSL - Light Silver
	C4	CMA - Machined Aluminum
	C5	CCB - Carbon Black
	C6	TCBC - Textured, Camera Black
	CC	CXY - Custom Color
Color Temperature	27K	2700K
	30K	3000K
	35K	3500K
	40K	4000K
	50K	5000K*
	27K9	2700K, 90 CRI
	30K9	3000K, 90 CRI
	35K9	3500K, 90 CRI
	40K9	4000K, 90 CRI
	50K9	5000K, 90 CRI*
	2230TD	2200K-3000K SpectraSync™ Dim-to-Warm*
	2750T	2700K-5000K SpectraSync™ Tunable White*
	2765T	2700K-6500K SpectraSync™ Tunable White* *Must be ordered with D05 or D55 Driver options; excludes 2' and 3' lengths; excludes D160-D200 output options
Output/ft	D055	550 (min)
	D200	2000 (max)
Driver	NDM	Non Dimming
	D05	5% Dimming, 0-10V*
	D55	Soft-Start 5% Dimming, 0-10V*
	D01	1% Dimming, 0-10V
	DS1	Soft-Start 1% Dimming, 0-10V
	D00	Dim-to-off (1%), 0-10V
	DS0	Soft-Start Dim-to-off (1%), 0-10V
	LEC	Hi-Lume 1% EcoSystem LED Driver
	LTW	Hi-Lume 1% 2-wire LED driver (120V forward only)
	DALI	DALI*
DALIP	Powered DALI (2.0)* * Must be ordered with 2230TD, 2750T or 2765T option	

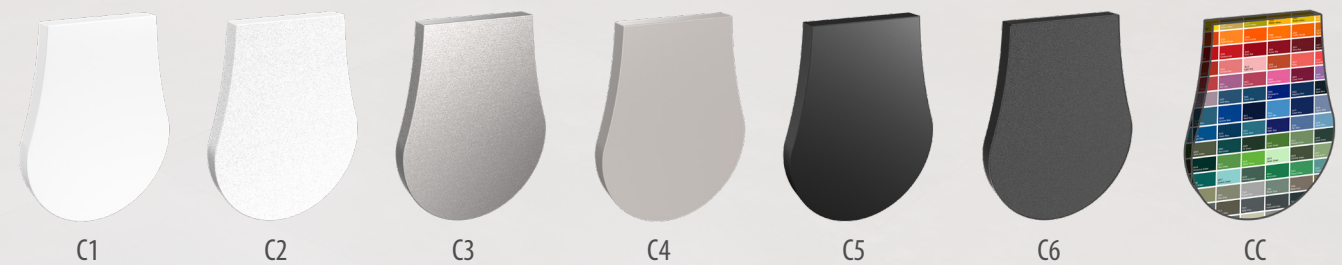
Feature	Options	Description
Circuiting	1C	1 Circuit
Voltage	UNV	Universal Voltage
	120	120 Volt
	240	240 Volt
	277	277 Volt
	347	347 Volt (D01 and NDM only)* *Excludes Emergency Battery Pack 'EF' Option. Excludes DALI, DALIP and Lutron (LTW/LEC) Dimming Drivers
Suspension Kit	FA1	Suspension Kit, 51"
	FA2	Suspension Kit, 87"
	FA3	Suspension Kit, 219"
	FA4	Suspension Kit, 363"

Optional Features		
Nightlight	_NL	Nightlight Circuit Required. Enter quantity. 2NL=2 nightlight circuits/row
Emergency	_EF	Emergency Battery Required. Enter quantity. 2EF=2 emergency batteries/row
Thru-Wiring	W1	No Thru Wire
	W2	Provide Normal and Emergency Thru Wiring*
	W3	Provide Normal Wiring Only *Only applicable when specified with Emergency
NX**	NXE	NX Wired Dual RJ45 SmartPORTS, without Sensor
	NXERM	NX Wired Dual RJ45 SmartPORTS and Integral NX SMP2-LMI PIR Occupancy Sensor with Automatic Dimming Photocell and Bluetooth Programming
	NXWRM	NX Networked Wireless Enabled Integral NX SMP2-LMI PIR Occupancy Sensor with Automatic Dimming Photocell and Bluetooth Programming
	NXW	NX Networked Wireless Radio Module NXRM2 and Bluetooth Programming, without Sensor
*Not available for row mounting. Only available with 0-10V Driver options. Contact factory for Length restrictions. Refer to NX Integrated Controls Reference Table on specification sheets for functionality of options.		
Sensors*	SD1	Daylight Sensor Required. Enter quantity 2SD1= 2 daylight sensors/row
	S04	Occupancy Sensor Required. Enter quantity 2S04= 2 occupancy sensors/row

*Additional lead time may be applicable. Contact factory.



Finish Options



Current 

Current - HLI Brands

701 Millennium Blvd.
Greenville, SC 29607

currentlighting.com/litecontrol

© 2022 Litecontrol Corporation. All rights reserved. Information and specifications subject to change without notice. All values are design or typical values when measured under laboratory conditions.

Rev 02/23/20231

LC_Note_Brochure_R01
