

## Complex Environment DOWNLIGHTS

Surgical Suite • MRI & Scanning • Vandal Resistant / Behavioral • Cleanroom / Food Processing



# ARCHITECTURAL DOWNLIGHTING

for Complex Environments



Built With Purpose, Designed To Protect, Engineered To Perform

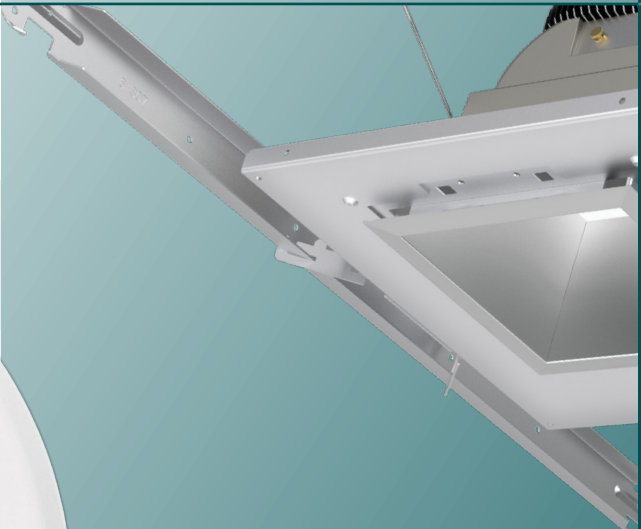


Lifeshield offers a wide breadth of complex environment lighting to cover patient rooms, surgical and imaging, behavioral spaces, vandal, and cleanroom applications.



## Surgical Suite

Designing to industry certifications along with application suitable construction helps to protect patients and staff during routine and life-saving procedures.



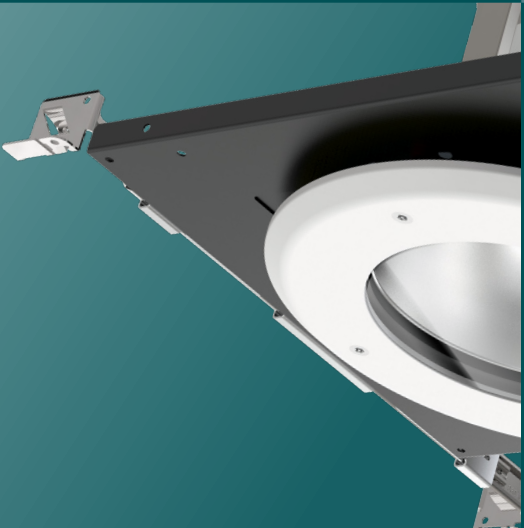
## MRI & Scanning

Proper shielding of electromagnetic interference and non-ferromagnetic construction ensure compatibility with sensitive equipment, resulting in positive patient outcomes.



## Vandal Resistant / Behavioral

Impact and ligature resistant lighting helps deter self-harm and / or injury to others or property.



## Cleanroom / Food Processing








Fixtures for these applications not only provide illumination for tasks, but also serve as a barrier between the room and plenum to dirt and contaminants.





Engineered  
**EXCELLENCE**

Very Narrow    Narrow    Medium    Wide    Extra Wide    Wall Wash

| Lumens   | Surgical Suite  |   |   |   | Vandal Resistant/<br>Behavioral   |   |   |   | Cleanroom /<br>Food Processing  |   |   |   | MRI   |   |   |   |
|--|---|---|---|---|---|---|---|---|---|---|---|---|---|---|---|---|
|  |    |    |    |    |    |    |    |    |    |    |     |    |    |    |    |    |
|  | Up to 4000 lm   |   |   |   | Up to 4000 lm   |   |   |   | Up to 4000 lm   |   |   |   | Up to 4000 lm   | Up to 6000 lm   | Up to 4000 lm   | Up to 6000 lm   |
|    |    |    |    |    |    |    |    |    |    |    |    |    |    |    |    |    |
|    |    |    |    |    |    |    |    |    |    |    |    |    |    |    |    |    |
|  |  |  |  |  |   |   |   |   |   |   |   |   |  |  |  |  |
|  |  |  |  |  |   |   |   |   |   |   |   |   |  |  |  |  |
|  |  |  |  |  |  |  |  |  |  |  |  |  |   |   |   |   |
|  |  |  |  |  |  |  |  |  |  |  |  |  |   |   |   |   |
|  |  |  |  |  |  |  |  |  |  |  |  |  |   |   |   |   |
|  |  |  |  |  |  |  |  |  |  |  |  |  |   |   |   |   |
|  |  |  |  |  |  |  |  |  |  |  |  |  |   |   |   |   |
|  |  |  |  |  |  |  |  |  |  |  |  |  |   |   |   |   |
|  |  |  |  |  |  |  |  |  |  |  |  |  |   |   |   |   |
|  |  |  |  |  |  |  |  |  |  |  |  |  |   |   |   |   |

- 1 IC Housing option required to meet IC rating.
- 2 CP Housing option required to meet CCEA rating.
- 3 EMR Housing option required to meet UL 924 rating.
- 4 MIL STD 461G and IEC available from 600–3000 nominal lumens.

## Common LED source and mounting methodology

Varied upper reflector for  
different distributions

Optical film for  
beam modification

Optical grade silicone  
cover lens delivers  
beam uniformity and  
smooth edge transitions

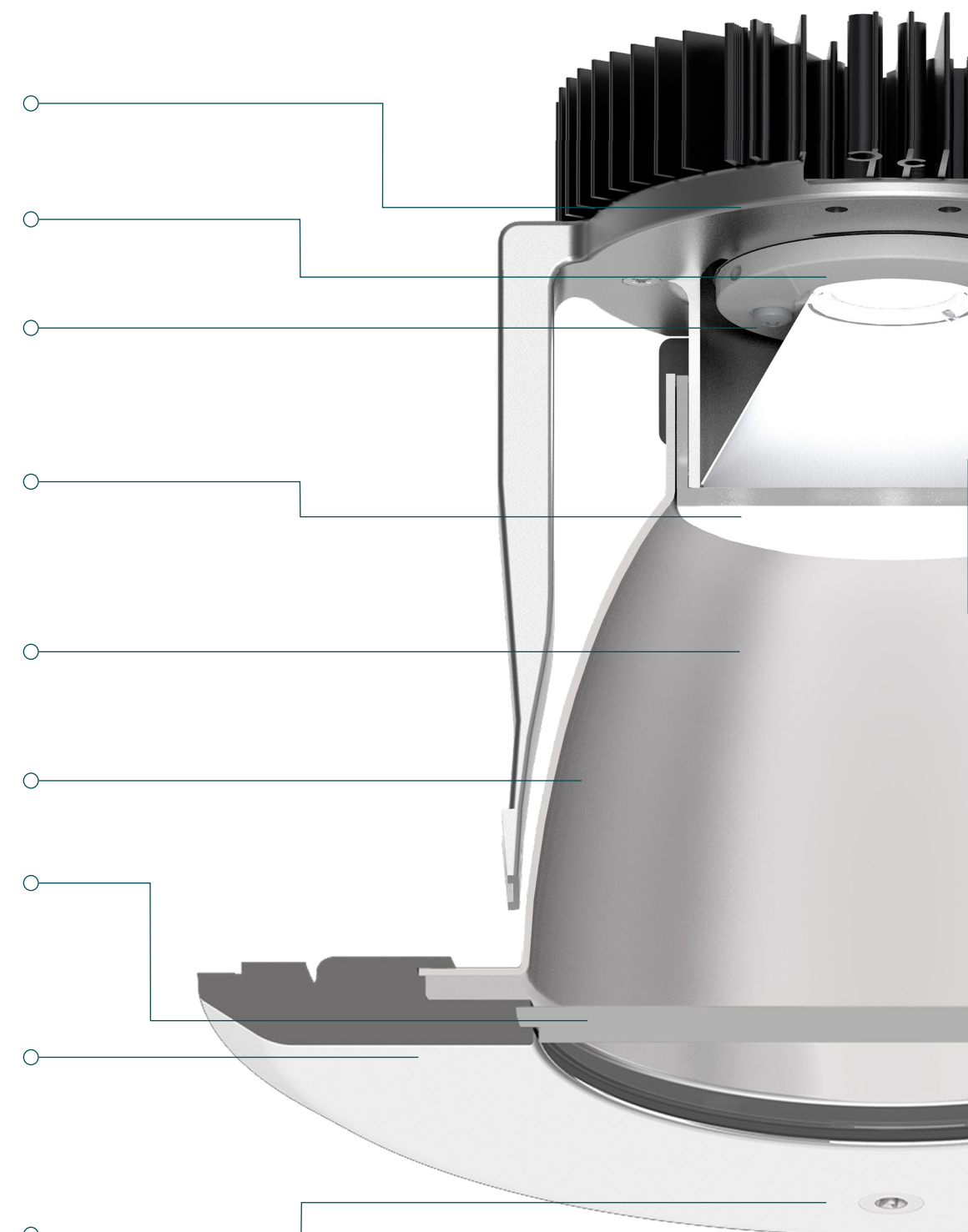
Consistent aluminum  
reflectors across all  
aperture sizes and shapes

Low glare, anodized,  
reflector finishes

.250" thick,  
clear polycarbonate lens\*  
*(Upper silicone optic cover lens in  
self-flanged, open MRI reflector.)*

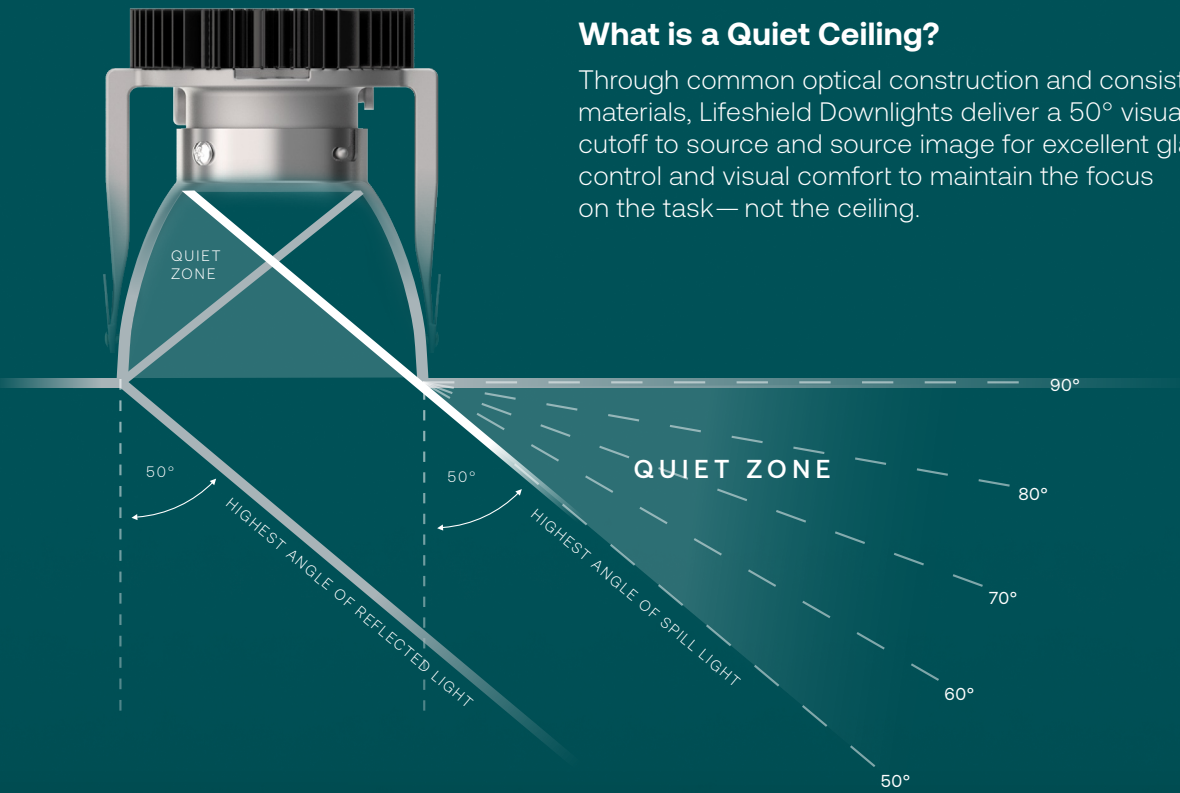
Durable, die-cast aluminum  
(low copper alloy) trim bezel.  
White painted finish bezel  
and hardware\*  
*(Antimicrobial white optional)*

Optional  
tamper resistant  
fasteners\*



\*Not applicable to MRI applications.





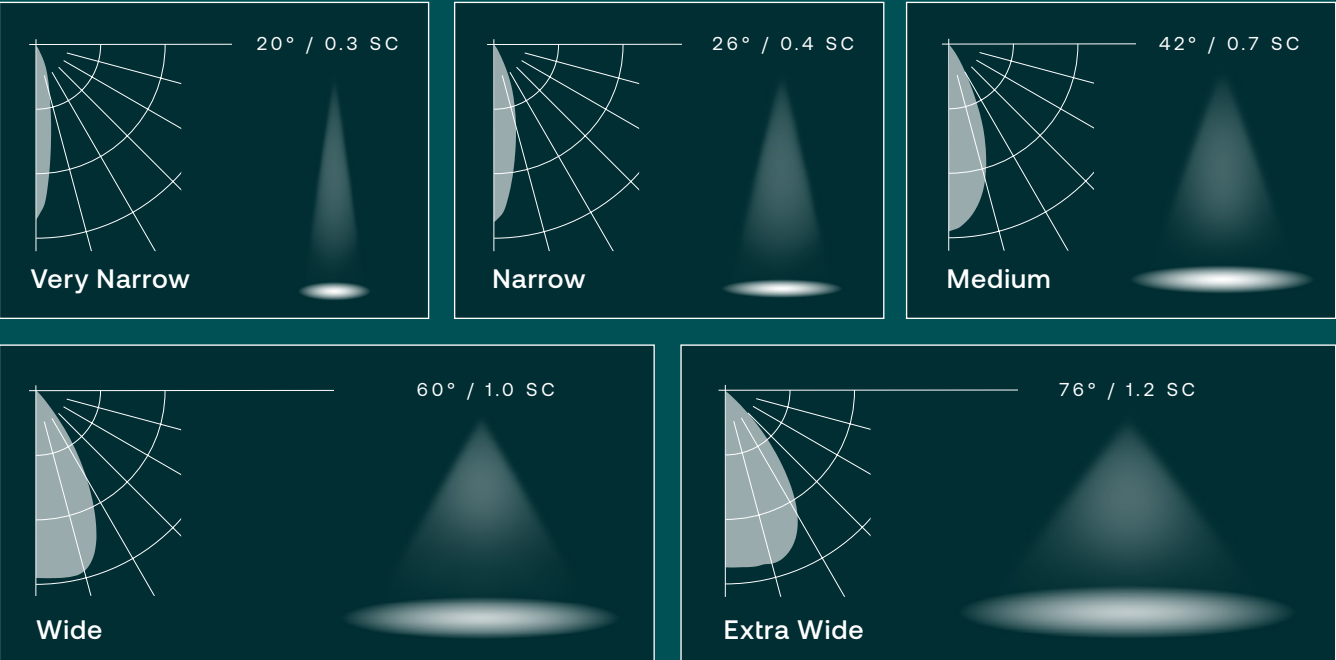
**What is a Quiet Ceiling?**

Through common optical construction and consistent materials, Lifeshield Downlights deliver a 50° visual cutoff to source and source image for excellent glare control and visual comfort to maintain the focus on the task — not the ceiling.

**Beam Distributions**

Based on 4" Round MRI Downlight

Various distributions give flexibility of luminaire placement and ability to illuminate all work surfaces safely for tasks.



Alternative shallow aperture solutions create greater ceiling glare.



Lifeshield Downlights with 50° cutoff for a quiet ceiling.



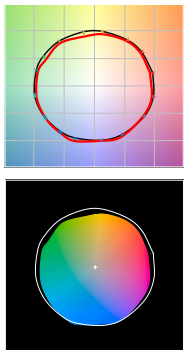
This is a critical feature when placed in challenging complex environments that require proper light levels with good uniformity. In addition, the fixtures must work around the mechanical obstructions of medical or industrial equipment to provide a comfortable and task safe work environment.



While providing vertical illumination on wall surfaces, Wall Wash luminaires (available for round aperture) also contribute to the ambient illumination — complementing other downlighting in the space.

**TM-30 Data 3500K**

| Value              | 80+ CRI | 90+ CRI |
|--------------------|---------|---------|
| R <sub>f</sub>     | 84      | 88      |
| R <sub>g</sub>     | 95      | 95      |
| CCT (K)            | 3411    | 3419    |
| D <sub>uv</sub>    | 0.0015  | 0.0042  |
| x                  | 0.4120  | 0.4147  |
| y                  | 0.3974  | 0.4052  |
| CIE R <sub>a</sub> | 84      | 93      |
| CIE R <sub>g</sub> | 11      | 62      |



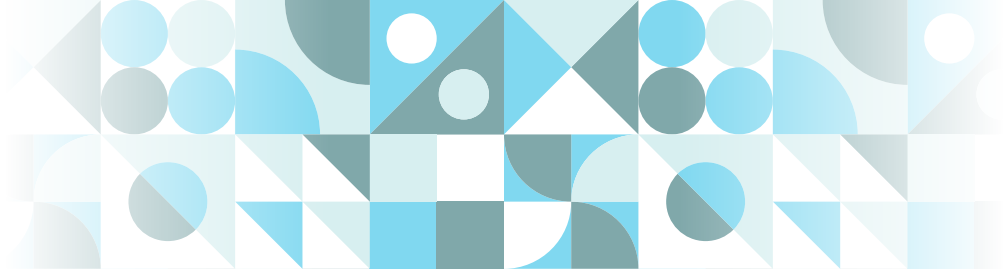
**2 Step MacAdam Ellipse**

Color quality is important for true color rendition of critical tasks. Surgeries and medical diagnostics require high CRI for true assessment of organs and tissue during medical procedures. Pharmaceutical labs require proper color rendition for detailed analysis and food processing requires high CRI to spot mold, discoloration and other deficiencies during food prep.





# Broad Palette of LIGHTING SOLUTIONS



# Housing Options & ACCESSORIES



**Specular**  
(S)



**Semi-Specular**  
(SS)



**American Matte™**  
(MFC)



**SoftSheen™**  
(VSS)



**Softglow®**  
(VS)

## Finish Options

**Specular** is a mirror-like finish that creates a low brightness, glare-free appearance with its precise cutoff.

**Semi-Specular** exhibits a slightly diffuse look in the ceiling plane while still maintaining a glare-free appearance.

**American Matte™** (U.S. Patent No. 6,254,256) finish has a stippled surface texture that provides a softer cutoff with dynamic brightness that helps hide fingerprints.

**SoftSheen™** falls in between the Specular and Softglow® finishes. It offers a deeper finish than Semi-Specular with a slightly brighter ceiling appearance.

**Softglow®** reflectors raise the ceiling plane visually by creating controlled brightness without glare at the aperture. It is an excellent alternative to a white painted reflector finish.

## Reflector Color Options

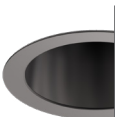
Lifeshield Downlights offer an array of anodized and painted cone colors that, with the finish options, will enhance the tone and color within the space.



**Clear**  
(Standard)



**Champagne Gold** (CG)



**Black** (BL)



**Light Wheat** (LW)



**Pewter** (PW)



**Painted White** (WC)



**Painted Black** (BC)

## Flange Options

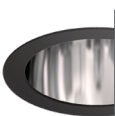
Varied flange options allow choices for how the reflector trim will integrate with the ceiling surface. *Selection only available for MRI.*



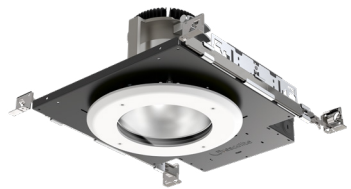
**Matches Reflector**  
(Standard)



**Painted White** (WT)



**Painted Black** (BT)



## Non-IC Plaster Frame

(-H) New Construction plaster frame housing for Non-IC applications.



## IC Rated and Chicago Plenum

(-H IC) New Construction enclosed housing suitable for use in insulated ceiling (IC) applications.

(-H CP) New Construction enclosed housing CCEA approved for use in Chicago Plenum applications.

## Emergency Options

Lifeshield offers remote emergency lighting options as well as auxiliary power solutions to ensure safe egress and compliance with life safety codes.

## UL 924 Compliant

All emergency housing options and accessories provide path of egress lighting for a minimum of 90 minutes.

## EMR

### Remote Emergency

Battery pack mounts to plaster frame. Remote test switch plate/indicator light assembly can mount up to 50 ft away.

EMR Battery packs provide 7-watts of emergency power.

## DTS

### Device Transfer Switch

Control relay device mounts to plaster frame J-box and connects to auxiliary generator or inverter. Senses loss of normal power and bypasses switch position and dimmer settings to provide full lumen output under emergency power. DTS Listed to UL1008 Transfer Switch Standard.

DTS Option & Inverters provide full output emergency AC power.

## Accessories



**LPS Series**  
Micro-Inverter  
20VA/55VA

Use with multiple fixtures from 20W through 55W loads.



**LiteGear®**  
Central Inverters  
125VA/250VA

Ideal for larger applications and loads from 110W to 220W.



Contact your local Current representative for any assistance with proper sizing and loading of your inverter selection.





Application:

# SURGICAL SUITE

- ISO3 clean room rated downlights support sterile healthcare applications.
- Standard (through 20L) for MIL 461G and IEC/EN 60601-1-2:2020 for use with medical electrical equipment and systems
- Antimicrobial finishes and smooth, easily cleaned surfaces help inhibit contamination.

EX:      **Housing**      **Trim**      **Bezel**

LTR-6RD-H-SUR-SL10L-DM1 / LTR-6RD-T-SUR-SL35K8MD-SS / LTR-6RD-CE-WTAM

| Housing                      | Housing Type       | Lumen Package     | Lumen Output | Driver Options          | Voltage           | Housing Options  |
|------------------------------|--------------------|-------------------|--------------|-------------------------|-------------------|--|
| LTR-4RD-H 4" Round Housing   | SUR Surgical Suite | SL Standard Lumen | 06L 600 lm   | DM1 0-10V Dimming to 1% | Standard 120-277V | CP Chicago Plenum  |
| LTR-4SQD-H 4" Square Housing |                    |                   | 10L 1000 lm  |                         |                   | IC IC Rated  |
| LTR-6RD-H 6" Round Housing   |                    | ML Medium Lumen   | 20L 2000 lm  |                         |                   | EMR Emergency Battery Pack with remote test switch indicator light |
| LTR-6SQD-H 6" Square Housing |                    |                   | 25L 2500 lm  |                         |                   | F Fuse   |
|                              |                    |                   | 30L 3000 lm  |                         |                   |  |
|                              |                    | HL High Lumen     | 35L 3500 lm  |                         |                   |  |
|                              |                    |                   | 40L 4000 lm  |                         |                   |  |

| Trim   | Trim Type          | Lumen Package     | CCT       | CRI       | Distribution    | Reflector Finish   | Reflector Color                  |
|--|--------------------|-------------------|-----------|-----------|-----------------|--|----------------------------------|
| <u>Downlight</u>                             | SUR Surgical Suite | SL Standard Lumen | 27K 2700K | 8 80+ CRI | VNR Very Narrow | Finish not applicable with painted reflectors (WC or BC) | Standard Clear                   |
| LTR-4RD-T 4" Round Downlight Trim Assembly   |                    |                   | 30K 3000K | 9 90+ CRI | NR Narrow       |  | CG Champagne Gold                |
| LTR-4SQD-T 4" Square Downlight Trim Assembly |                    | ML Medium Lumen   | 35K 3500K |           | MD Medium       | S Specular   | BL Black                         |
| LTR-6RD-T 6" Round Downlight Trim Assembly   |                    | HL High Lumen     | 40K 4000K |           | WD Wide         | SS Semi-Specular   | LW Light Wheat                   |
| LTR-6SQD-T 6" Square Downlight Trim Assembly |                    |                   | 50K 5000K |           | XW Extra Wide   | MFC American Matte™                                      | PW Pewter                        |
| <u>Wall Wash</u>                             |                    |                   |           |           | WW Wall Wash    | VS Softglow®   | WC Painted White Cone and Flange |
| LTR-4RW-T 4" Round Wall Wash Trim Assembly   |                    |                   |           |           |                 | VSS SoftSheen™   | BC Painted Black Cone and Flange |
| LTR-6RW-T 6" Round Wall Wash Trim Assembly   |                    |                   |           |           |                 |  |                                  |

| Bezel   | Bezel Color               |
|---|---------------------------|
| LTR-4RD-CE 4" Round Bezel Trim, Clear Polycarbonate Flush Lens, Stainless Steel Philips Head Screws   | WT White                  |
| LTR-4SQD-CE 4" Square Bezel Trim, Clear Polycarbonate Flush Lens, Stainless Steel Philips Head Screws | WTAM White, Antimicrobial |
| LTR-6RD-CE 6" Round Bezel Trim, Clear Polycarbonate Flush Lens, Stainless Steel Philips Head Screws   |                           |
| LTR-6SQD-CE 6" Square Bezel Trim, Clear Polycarbonate Flush Lens, Stainless Steel Philips Head Screws |                           |



For overview purposes only. Not all options are available in combination. For complete ordering information, see specification sheets.



To learn more about surgical downlights visit our website: [currentlighting.com/surgical-suite-downlights/290427](https://currentlighting.com/surgical-suite-downlights/290427)





Application:

# MRI & SCANNING

- Non-ferrous construction prevents electromagnetic interference with the most sensitive medical equipment.
- Remote driver enclosures isolate electromagnetic fields.

| EX: | Housing  | Trim | Remote Driver Cabinet** |
|-----|--|------|-------------------------|
|     | LTR-6RD-H-MRI / LTR-6RD-T-MRI-SL35K8MD-SS / RDE-LTR-SL10LDM1-1 |      |                         |

| Housing    | Housing Type                          |
|------------|---------------------------------------|
| LTR-4RD-H  | MRI MRI / Imaging (Non-ferromagnetic) |
| LTR-4SQD-H |                                       |
| LTR-6RD-H  |                                       |
| LTR-6SQD-H |                                       |



RDE,  
Remote Driver Enclosure

| Trim                     | Lumen Package      | CCT       | CRI       | Distribution    | Reflector Finish   | Reflector Color                  | Flange Color                     | Options                   |
|--------------------------|--------------------|-----------|-----------|-----------------|--|----------------------------------|----------------------------------|---------------------------|
| <b>Downlight</b>         | SL Standard Lumen  | 27K 2700K | 8 80+ CRI | VNR Very Narrow | Finish not applicable with painted reflectors (WC or BC) | Standard Clear                   | Standard matches reflector color | AM Anti-microbial Coating |
| LTR-4RD-T-MRI 4" Round   | ML Medium Lumen    | 30K 3000K | 9 90+ CRI | NR Narrow       |  | CG Champagne Gold                |                                  |                           |
| LTR-4SQD-T-MRI 4" Square | HL High Lumen      | 35K 3500K |           | MD Medium       |  | BL Black                         | WT White Flange                  |                           |
| LTR-6RD-T-MRI 6" Round   | VL Very High Lumen | 40K 4000K |           | WD Wide         |  | LW Light Wheat                   | BT Black Flange                  |                           |
| LTR-6SQD-T-MRI 6" Square |                    | 50K 5000K |           | XW Extra Wide   | S Specular   | PW Pewter                        |                                  |                           |
| <b>Wall Wash</b>         |                    |           |           | WW Wall Wash    | SS Semi-Specular   | WC Painted White Cone and Flange |                                  |                           |
| LTR-4RW-T-MRI 4" Round   |                    |           |           |                 | MFC American Matte™                                      | BC Painted Black Cone and Flange |                                  |                           |
| LTR-6RW-T-MRI 6" Round   |                    |           |           |                 | VS Softglow®   |                                  |                                  |                           |
|                          |                    |           |           |                 | VSS SoftSheen™   |                                  |                                  |                           |

| Remote Driver Cabinet   | Lumen Package      | Lumen Output                     | Driver Options          | Number of Drivers |
|---|--------------------|----------------------------------|-------------------------|-------------------|
| RDE-LTR Remote Driver Cabinet for use with LTR MRI Downlights | SL Standard Lumen  | 06L 600<br>10L 1000<br>15L 1500  | DM1 0-10V Dimming to 1% | 1 1 Driver        |
|   | ML Medium Lumen    | 20L 2000<br>25L 2500<br>30L 3000 |                         | 2 2 Drivers       |
|   | HL High Lumen      | 35L 3500<br>40L 4000<br>45L 4500 |                         | 3 3 Drivers       |
|   | VL Very High Lumen | 50L 5000<br>55L 5500<br>60L 6000 |                         | 4 4 Drivers       |
|   |                    |                                  |                         | 5 5 Drivers       |
|   |                    |                                  |                         | 6 6 Drivers       |
|   |                    |                                  |                         | 7 7 Drivers       |
|   |                    |                                  |                         | 8 8 Drivers       |



For overview purposes only. Not all options are available in combination. For complete ordering information, see specification sheets.

\*\*Customer is required to provide appropriate filters for MRI application.



To learn more about MRI and Scanning downlights visit our website: [currentlighting.com/mri-suite-downlights/290428](https://currentlighting.com/mri-suite-downlights/290428)





Tamper Resistant Hardware,  
.250" Clear Polycarbonate Lens

Application:

# VANDAL RESISTANT / BEHAVIORAL

- Ligature resistant design lessens risk of personal harm from misuse.
- Tamper resistant fasteners and construction prevent unauthorized access.



EX:                    **Housing**                    **Trim**                    **Bezel**  
LTR-6RD-H-SL10L-DM1 / LTR-6RD-T-SL35K8MD-SS / LTR-6RD-CEVR-WTAM

| Housing                         | Lumen Package        | Lumen Output   | Driver Options                                | Control Options   | Voltage              | Housing Options   |
|---------------------------------|----------------------|----------------|---|---|----------------------|---|
| LTR-4RD-H<br>4" Round Housing   | SL<br>Standard Lumen | 06L<br>600 lm  | DM1<br>0–10V Dimming to 1%                    | NXE<br>NX Wired Dual RJ45 SmartPORTS, without Sensor                          | Standard<br>120–277V | CP<br>Chicago Plenum  |
| LTR-4SQD-H<br>4" Square Housing |                      | 10L<br>1000 lm |   |   |                      | IC<br>IC Rated  |
| LTR-6RD-H<br>6" Round Housing   | ML<br>Medium Lumen   | 20L<br>2000 lm | DM01<br>0–10V Dimming to <1%                  | NXW<br>NX Networked Wireless Radio and Bluetooth® Programming, without Sensor | 34<br>347V           | EMR<br>Emergency Battery Pack with remote test switch indicator light |
| LTR-6SQD-H<br>6" Square Housing |                      | 25L<br>2500 lm |   |   |                      | DTS<br>Device Transfer Switch   |
|                                 | HL<br>High Lumen     | 30L<br>3000 lm | DALI<br>DALI Dimming to 1%                    | LV<br>Lutron Vive Enabled, 0–10V (requires 0–10V driver)                      |                      | GTD<br>Generator Transfer Device                                      |
|                                 |                      | 35L<br>3500 lm | EDM<br>Lutron Hi-Lume EcoSystem Dimming to 1% | LVE<br>Lutron Vive Enabled EcoSystem (requires EDM)                           |                      | F<br>Fuse   |
|                                 |                      | 40L<br>4000 lm |   |   |                      |   |

| Trim  | Lumen Package        | CCT                   | CRI          | Distribution       | Reflector Finish   | Reflector Color                     |
|---|----------------------|-----------------------|--------------|--------------------|--|-------------------------------------|
| <u>Downlight</u>                                | SL<br>Standard Lumen | 27K<br>2700K          | 8<br>80+ CRI | VNR<br>Very Narrow | Finish not applicable with painted reflectors (WC or BC) | Standard Clear                      |
| LTR-4RD-T<br>4" Round Downlight Trim Assembly   | ML<br>Medium Lumen   | 30K<br>3000K          | 9<br>90+ CRI | NR<br>Narrow       |  | CG<br>Champagne Gold                |
| LTR-4SQD-T<br>4" Square Downlight Trim Assembly |                      | 35K<br>3500K          |              | MD<br>Medium       | S<br>Specular  | BL<br>Black                         |
| LTR-6RD-T<br>6" Round Downlight Trim Assembly   | HL<br>High Lumen     | 40K<br>4000K          |              | WD<br>Wide         | SS<br>Semi-Specular                                      | LW<br>Light Wheat                   |
| LTR-6SQD-T<br>6" Square Downlight Trim Assembly |                      | 50K<br>5000K          |              | XW<br>Extra Wide   | MFC<br>American Matte™                                   | PW<br>Pewter                        |
| <u>Wall Wash</u>                                |                      | AMB<br>Amber (590 nm) |              | WW<br>Wall Wash    | VS<br>Softglow®  | WC<br>Painted White Cone and Flange |
| LTR-4RW-T<br>4" Round Wall Wash Trim Assembly   |                      |                       |              |                    | VSS<br>SoftSheen™  | BC<br>Painted Black Cone and Flange |
| LTR-6RW-T<br>6" Round Wall Wash Trim Assembly   |                      |                       |              |                    |  |                                     |

| Bezel  | Bezel Color                  |
|--|------------------------------|
| LTR-4RD-CEVR<br>4" Round Bezel Trim, Clear Polycarbonate Flush Lens, Stainless Steel Tamper Resistant Torx® screws   | WT<br>White                  |
| LTR-4SQD-CEVR<br>4" Square Bezel Trim, Clear Polycarbonate Flush Lens, Stainless Steel Tamper Resistant Torx® screws | WTAM<br>White, Antimicrobial |
| LTR-6RD-CEVR<br>6" Round Bezel Trim, Clear Polycarbonate Flush Lens, Stainless Steel Tamper Resistant Torx® screws   |                              |
| LTR-6SQD-CEVR<br>6" Square Bezel Trim, Clear Polycarbonate Flush Lens, Stainless Steel Tamper Resistant Torx® screws |                              |



For overview purposes only. Not all options are available in combination. For complete ordering information, see specification sheets.



To learn more about Vandal Resistant / Behavioral downlights visit our website:  
[currentlighting.com/vandal-behavioral-downlights/290429](https://currentlighting.com/vandal-behavioral-downlights/290429)





Application:

# CLEANROOM / FOOD PROCESSING

- ISO3 clean room rated downlights support sterile applications.
- Antimicrobial finishes and smooth, easily cleaned surfaces help inhibit contamination.
- IP66 and IP69K sealed construction ensures durability in wash down environments, NSF and wet locations.
- IC rated options accommodate installation in insulated ceilings.



EX:                    **Housing**                    **Trim**                    **Bezel**  
LTR-6RD-H-SL10L-DM1 / LTR-6RD-T-SL35K8MD-SS / LTR-6RD-CE-WTAM

| Housing                         | Lumen Package        | Lumen Output                              | Driver Options                             | Control Options   | Voltage                          | Housing Options  |
|---------------------------------|----------------------|---|--|---|----------------------------------|--|
| LTR-4RD-H<br>4" Round Housing   | SL<br>Standard Lumen | 06L 600 lm<br>10L 1000 lm<br>15L 1500 lm  | DM1 0-10V Dimming to 1%                    | NXE NX Wired Dual RJ45 SmartPORTS, without Sensor                         | Standard 120-277V<br><br>34 347V | CP Chicago Plenum  |
| LTR-4SQD-H<br>4" Square Housing |                      |   | DM01 0-10V Dimming to <1%                  | NXW NX Networked Wireless Radio and Bluetooth Programming, without Sensor |                                  | IC IC Rated  |
| LTR-6RD-H<br>6" Round Housing   | ML<br>Medium Lumen   | 20L 2000 lm<br>25L 2500 lm<br>30L 3000 lm | DALI DALI Dimming to 1%                    |   |                                  | EMR Emergency Battery Pack with remote test switch indicator light |
| LTR-6SQD-H<br>6" Square Housing |                      |   | EDM Lutron Hi-Lume EcoSystem Dimming to 1% | LV Lutron Vive Enabled, 0-10V (requires 0-10V driver)                     |                                  | DTS Device Transfer Switch   |
|                                 | HL<br>High Lumen     | 35L 3500 lm<br>40L 4000 lm                |  | LVE Lutron Vive Enabled EcoSystem (requires EDM)                          |                                  | GTD Generator Transfer Device                                      |
|                                 |                      |   |  |   |                                  | F Fuse   |

| Trim  | Lumen Package        | CCT                | CRI       | Distribution    | Reflector Finish   | Reflector Color                  |
|---|----------------------|--------------------|-----------|-----------------|--|----------------------------------|
| <u>Downlight</u>                                | SL<br>Standard Lumen | 27K 2700K          | 8 80+ CRI | VNR Very Narrow | Finish not applicable with painted reflectors (WC or BC) | Standard Clear                   |
| LTR-4RD-T<br>4" Round Downlight Trim Assembly   |                      | 30K 3000K          | 9 90+ CRI | NR Narrow       |  | CG Champagne Gold                |
| LTR-4SQD-T<br>4" Square Downlight Trim Assembly | ML<br>Medium Lumen   | 35K 3500K          |           | MD Medium       | S Specular   | BL Black                         |
| LTR-6RD-T<br>6" Round Downlight Trim Assembly   |                      | 40K 4000K          |           | WD Wide         | SS Semi-Specular   | LW Light Wheat                   |
| LTR-6SQD-T<br>6" Square Downlight Trim Assembly | HL<br>High Lumen     | 50K 5000K          |           | XW Extra Wide   | MFC American Matte™                                      | PW Pewter                        |
|   |                      | AMB Amber (590 nm) |           | WW Wall Wash    | VS Softglow®   | WC Painted White Cone and Flange |
| <u>Wall Wash</u>                                |                      |                    |           |                 | VSS SoftSheen™   | BC Painted Black Cone and Flange |
| LTR-4RW-T<br>4" Round Wall Wash Trim Assembly   |                      |                    |           |                 |  |                                  |
| LTR-6RW-T<br>6" Round Wall Wash Trim Assembly   |                      |                    |           |                 |  |                                  |

| Bezel  | Bezel Color               |
|--|---------------------------|
| LTR-4RD-CE<br>4" Round Bezel Trim, Clear Polycarbonate Flush Lens, Stainless Steel Philips Head Screws   | WT White                  |
| LTR-4SQD-CE<br>4" Square Bezel Trim, Clear Polycarbonate Flush Lens, Stainless Steel Philips Head Screws | WTAM White, Antimicrobial |
| LTR-6RD-CE<br>6" Round Bezel Trim, Clear Polycarbonate Flush Lens, Stainless Steel Philips Head Screws   |                           |
| LTR-6SQD-CE<br>6" Square Bezel Trim, Clear Polycarbonate Flush Lens, Stainless Steel Philips Head Screws |                           |



For overview purposes only. Not all options are available in combination. For complete ordering information, see specification sheets.



To learn more about Cleanroom / Food Processing downlights visit our website: [currentlighting.com/cleanroom-food-processing-downlights/290431](http://currentlighting.com/cleanroom-food-processing-downlights/290431)





## Certifications & STANDARDS



**CSA:** Product tested by a certified lab via an agreement with UL, insuring it meets all Canadian and American National Standards for security and performance. The cCSAus listing qualifies that a product is certified for use in the U.S. and Canada.



**IC RATED:** Products with an Insulation Contact (IC) rating are approved for direct contact with insulation. Tested and approved by a Nationally Recognized Testing Laboratory such as UL.



**IEC:** Meets requirements of IEC/EN 60601-1-2:2020 for basic safety and performance with regard to electromagnetic disruption applicable to medical electrical equipment and systems.



**IP66:** Ingress Protection (IP) 66 fixtures are rated as sealed from dust and particulates, water (other liquids) and from high pressure water jets (12.5 mm.) IP66 rated fixtures also meet the requirements for IP65 and IP64.



**IP69K:** Ingress Protection (IP) 69K fixtures are rated to the same particulate and water (other liquids) standards as IP66, but also include protection against prolonged exposure to high pressure water jets including those used at high temperatures for cleaning and sanitizing.



**IK10:** An international numeric classification for the degree of protection provided by an electrical enclosure (fixture) against external mechanical impacts. The highest level of protection rating is IK10.



**ISO 3:** Fixtures tested to the International Standards Organization (ISO) standard 14644-1 that are rated as ISO 3 (Federal Std. 209E, Class 1) ISO ratings (1 through 9) are used for qualifying cleanrooms and enclosures (fixtures) for use in cleanrooms. ISO 3 rated fixtures meet the requirements of ISO ratings 3 through 9.



**MIL461 G:** A United States Military Standard that describes how to test equipment for electromagnetic compatibility. The standard covers both conducted and radiated emissions and ensures that sensitive electronic equipment is less likely to be affected by electromagnetic interference (EMI).



**NSF:** NSF/ANSI Standard 2 (NSF2) establishes minimum requirements for food equipment, including lighting. Construction requirements are designed to prevent food contamination, including corrosion resistance, cleanability and the ability of exposed material to withstand normal wear.



**ANSI / UL 924:** The Standard for Safety of Emergency Lighting and Power Equipment published by Underwriters Laboratories. UL Listed Emergency Lights feature reliable battery backup systems that will operate for at least 90 minutes when power fails.



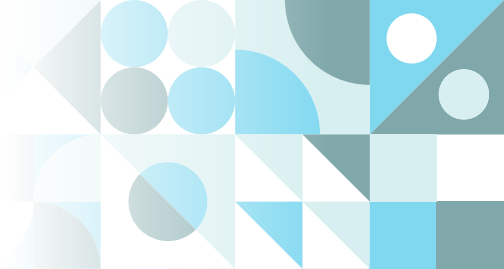
**WET Location:** Meets UL requirements for recessed fixtures that are mounted in a covered ceiling and are suitable for contact with water (liquid) from the room side.



**CCEA:** City of Chicago Environmental Air (CCEA) approved fixtures feature airtight construction to limit airflow from the room side to the plenum. Electrical wiring and conductors are enclosed in metal wireway compartments and sealed from the plenum.



One Lighting Platform for a Connected World.  
The NX Lighting Controls platform delivers seamless interior and exterior lighting control.



# lifeshield

Lighting for Complex Spaces

Lifeshield offers a wide breadth of complex environment lighting to cover patient rooms, surgical and imaging, behavioral spaces, vandal, and cleanroom applications.





**Current - HLI Brands**

701 Millennium Blvd.  
Greenville, SC 29607

**[currentlighting.com/lifeshield](https://currentlighting.com/lifeshield)**

© 2023 HLI Solutions, Inc. All rights reserved. Information and specifications subject to change without notice.  
All values are design or typical values when measured under laboratory conditions.

(Rev 5/15/23)

**LS-Downlights\_Brochure\_R06**

---