



healthcare | behavioral | vandal | cleanroom

built with purpose. designed to protect. engineered to perform.

Complex environment lighting solutions must meet high expectations. Products need to meet strict standards, perform reliably, and operate efficiently. Expertise is mandatory.

Expertise is about understanding.

Understanding the unique expectations of healthcare applications to the rigor of cleanroom environments...understanding is the key.

Designed with purpose from concept to installation, Lifeshield standards demand higher expectations for the service and quality of our luminaires.

► built with purpose

Lifeshield product solutions are built with purpose to meet the demanding needs for various types of complex spaces. Lifeshield provides peace of mind through intentional design for challenging environments.

- Highly configurable option packages scale to suit application needs.
- Embedded technologies optimize visual acuity, functionality, and user interfaces to enhance experiences and outcomes.
- Thoughtful optical designs provide uniform illumination for optimal visual aesthetics and glare control.
- Fixture construction prevents water and dust ingress (up to IP66 and ISO 3), impact and vibration (up to IK10 and ANSI 3G) ensure durability in the most challenging environments.

► designed to protect

Lifeshield fixtures provide safety on multiple levels and protection for those in the environment, while maintaining the integrity of the space and the quality of the activities performed.

- Antimicrobial paint and smooth, easily cleaned surfaces help inhibit contamination. 365 DisInfx options support surface and air disinfection in occupied spaces.
- Vandal resistant construction helps to maintain reliable illumination and security. Ligature resistant features support the safety and well-being of those at risk for self-harm.
- Listings (standard or as option) such as IP65/66, NSF, ISO, IK10, ANSI 3G support the environmental needs of complex spaces.

► engineered to perform

Reliable, consistent performance coupled with cutting edge technology and flexible options such as integrated controls, disinfection and tunable light sources help maximize the function of the space.

- Precise optic systems deliver superior illumination while maximizing energy efficiency.
- Enhanced light source options such as high efficacy 90CRI R90 TriGain and SpectraSync Color Tuning technology as well as narrow band color (green, amber, red and blue).
- Industry leading control systems expand the functionality of the space.

patient room

Meeting the needs for patient room lighting requires a keen understanding of the patient, the caregiver and the staff members responsible for maintaining the facility.

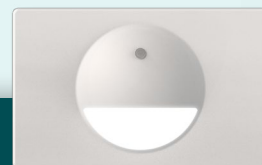
For the patient, reducing anxiety is critical to recovery. Lighting is a contributing element to the environment that can enhance the patient's overall well-being and lower stress to improve recovery outcomes. Lighting systems should deliver comfortable, low glare illumination with adjustable intensity and color temperature options to add flexibility and individual control for each patient.

Medical staff members and caregivers demand reliable, easy to use lighting systems that enable them to deliver the best care possible. Multi-function, high performance optical systems ensure high visual acuity during various treatment and recovery periods, coupled with light source options that deliver high color rendition to aid patient assessment.

Lighting product solutions must also meet Facility Manager expectations by being durable, simple to maintain, and support energy efficiency initiatives. Patient room fixtures that are easy to clean and come with microbial inhibiting finishes simplify housekeeping and environmental service activities while reducing infection risk. Lighting disinfection technologies further enhance patient safety.

Lifeshield patient room lighting fixtures take these various considerations into account to improve the patient room setting while ensuring construction and certifications are suitable for local, state, national regulations and industry best practices.

View the full line of patient room solutions at
https://www.currentlighting.com/indoor-lighting/patient_room



NITEWAY STEP LIGHT

Architectural, die-cast construction in a variety of styles provide even floor illumination. Options for white, amber and selectable CCT LEDs. A photocell option, through-wall box and behavioral versions are available.



REMEDI

Multi-function patient bed light providing ambient, reading, exam and optional night light functions. The exam function provides 100 FC and excellent 5:1 max:min uniformity.



EVEXIA

Contoured, low profile, aluminum bed light provides ambient and reading illumination with an optional night light mode. Suitable for patient rooms and assisted living facilities.



CWM

The direct/indirect surface mount unit is intended for ambient applications such as overbed, corridor and over mirror. Options for decorative fascia available.



MEDIMODE

Architectural patient room solution with ambient, reading and exam functionality. Low glare ambient and reading functions with an exam mode producing 100+ FC across the bed surface.

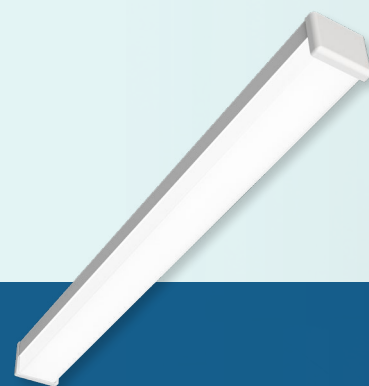


behavioral spaces

Behavioral spaces may share many common attributes with standard treatment areas but require unique design elements to ensure the well-being and safety of patients, staff and visitors. Behavioral care can take the form of inpatient or outpatient care facilities designed for minimum to maximum security. Fixtures for these spaces must fulfill not only the psychological treatment needs of the patient but also address any physical treatment that may be needed.

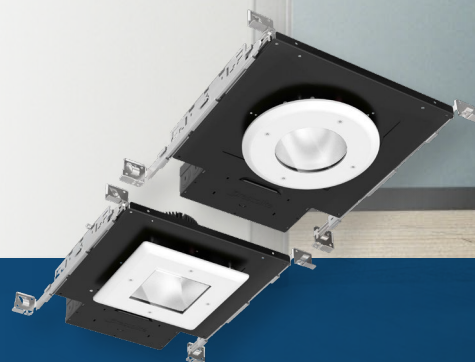
To lessen the risk of patient self-harm, fixtures and furnishings need to be constructed according to stringent industry standards for impact and ligature resistance. Durable, impact resistant fixtures with tamper-resistant hardware should be used so as not to allow for patient access for concealment of harmful items or to expose potentially dangerous electrical components.

While providing proper light levels and safety features fixtures should also have a design aesthetic appropriate to public or patient spaces. Architectural and even residential designs are preferred to promote a pleasant and calming environment for care. Lifeshield behavioral room lighting combines safety with performance and aesthetics creating optimal solutions for a safe and supportive behavioral environment.



WALL3

Linear wall or surface solution available in 1', 2', 3' and 4' lengths. IP65 and IK10 rated options with die-cast end caps, polycarbonate lens and tamper resistant hardware.



DOWNLIGHT

Complex environment downlights including 4" and 6" round and square construction. designed for impact and ligature resistance.



OBEX

Highest illumination levels in class for 2x2, 2x4 and 1x4 for patient rooms and public space.



PREVENT ROUND

Architectural die-cast 13" and 17" round fixture with concealed hardware. Options for SpectraSync and solid color LED's (amber, red, green, blue) in addition to white.



MEDIMODE

Multi-functional patient room luminaire that meets primary lighting requirements for patient rooms while addressing the safety and security of behavioral health spaces.



surgical & imaging

Critical treatment and diagnostic tasks performed in surgical and imaging suites require the support of specialized lighting systems. Performance is key in meeting IES recommended light levels for surgical procedures in rooms with higher mounting heights. Task specific light levels for surgery and imaging are supplied by fixtures with finely engineered optical designs and augmented by control systems.

Designing to industry certifications along with application suitable construction helps to protect patients and staff during routine and life-saving procedures. Filtering electromagnetic interference and non-ferromagnetic construction ensure compatibility with sensitive equipment, resulting in positive patient outcomes. Reliable and constant illumination levels are maintained by options for battery backup and fixture interface to generator power.

Within these challenging environments are subcategories of care with even more specific needs. Orthopedic, robotic and hybrid surgical rooms and ever evolving hybrid scanning equipment require a constant monitoring of the market and its needs. Certifications such as MIL 461G for frequency considerations and ISO 3 cleanroom ratings add an extra layer of confidence in the performance of luminaires in the space. High color rendering in white LED sources for general lighting is part of best practice for these areas. Options for specific narrow band “color” spectrums of light needed in certain surgical procedures are also featured in Lifeshield products.

Disinfection in healthcare is crucial but at an even higher level in surgical and scanning areas. 365 DisInFx UVA and UVC disinfection lighting can augment the already stringent cleaning protocols used. A full range of finely tuned optics within downlights and other task lighting and directional signage round out the package of the lighting available. Lifeshield provides a complete offering of lighting solutions and options for the wide array of these applications.



View the full line of surgical & imaging solutions at
https://www.currentlighting.com/indoor-lighting/surgical_imaging



OBSIDIAN

Ceiling and wall mount, aluminum construction, and an LED life cycle exceeding 10 years. Standard or custom signage that remains hidden until sign is energized.

DOWNLIGHT

Surgical and MRI products. 4" & 6" round and square products offering five general and one wall wash optic. MIL461G, ISO, non-ferromagnetic construction and remote power supply cabinet options by application.

OBEX

Symmetric and asymmetric 2x2, 2x4 and 1x4 fixture with options for 80 and 90 CRI white LED's and narrow band green, amber, blue and red LED's. Mil 461 G and 365 DisInFx UV-A integration available. IP65 NSF2 ISO3

vandal

For both indoor and outdoor applications, vandal resistant lighting is built to withstand various degrees of abuse. The location of a fixture determines the level of opportunity and time it takes to access or damage it and dictates the level of construction and features that are needed to deter vandalism. This can take the form of destructive behavior or seeking to gain access to fixture components in order to disable it or behave recklessly – endangering lives. A more specialized form of vandal resistant lighting focuses on behavioral health – just one example of applications where this type of product is used.

Durable materials, secure mounting and tamper proof hardware help to ensure the structural integrity of luminaires and maintain recommended light levels for safety and security. Reliable protection against weather, natural elements and man-made conditions is enhanced by the addition of IP ratings (moisture), IK10 (impact) and others for vibration and surge suppression. When coupled with controls an additional level of security and protection is provided by adjustable light levels based on time of day or occupancy. Lifeshield products offer a wide array of commercial and architectural designs, low to high security features and controls to fully protect and secure the environment.

PUBLIC SPACES

INSTITUTIONAL

PARKING AREAS

RESTROOMS

STREETSCAPES

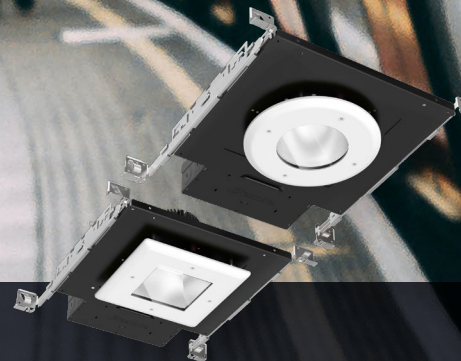
MUNICIPAL COMPLEXES

View the full line of vandal solutions at
<https://www.currentlighting.com/indoor-lighting/vandal>



WALL3

Linear wall or surface solution available in 1', 2', 3' and 4' lengths. IP65 and IK10 rated options with die-cast end caps, polycarbonate lens and tamper resistant hardware.



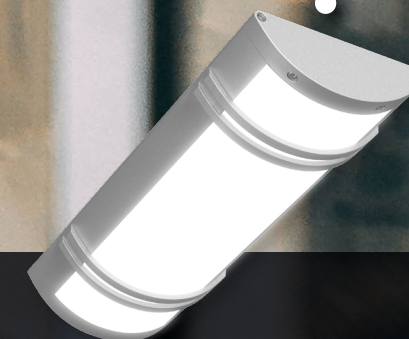
DOWNLIGHT

4" and 6" square and round fixtures offer die-cast bezels, impact resistant lens and tamper proof hardware. Five general and one wall wash optic. IP66 and NSF2 rated.



PREVENT ROUND

Durable die-cast aluminum housing with concealed hardware and impact resistant polycarbonate lens. Ceiling or wall mounting, suitable for indoor or outdoor use. 13" or 17" round fixture. IP66, IK10 and ANSI3G



PREVENT LINEAR

Individual, row mount or custom configurations for indoor/outdoor wall and ceiling mount. IP66, IK10 and ANSI3G listed aluminum housing with concealed hardware and impact resistant polycarbonate lens. Decorative accent options available.

cleanroom

“Cleanroom” can apply to several types of applications – one or more applications can exist in the same space so it’s important to fully understand all of the activities that will happen in a space and consider the listings, certifications and industry standards needed. A surgical suite is just one example of a specialized type of cleanroom.

ISO Standards classify areas by levels of required protection against ingress of contaminants and particulates of varying sizes. NSF relates to food processing requirements but may also be applied to other non-food applications where liquid contamination can occur or where hose-down cleaning is required. Cleanrooms are maintained either by the personnel who use the space or by highly specialized teams certified to clean and service these spaces.

Proper illumination to see all surfaces while completing these tasks is crucial. In the case of surgical suites, quarantine areas and labs, disinfection lighting (365 DisInFx in surgical and cleanroom fixtures) may also be used as a supplementary method to keep the risk of contamination low.

PHARMACEUTICAL RESEARCH
GOVERNMENT FACILITIES
AERONAUTICS/AEROSPACE FACILITIES
PATIENT QUARANTINE ROOMS
OPTICS LABS
FOOD PROCESSING
NANOTECHNOLOGY LABS

View the full line of cleanroom solutions at
<https://www.currentlighting.com/indoor-lighting/cleanroom>



DOWNLIGHT

4" and 6" round and square ISO construction for positive and negative pressure cleanrooms. IP66 and NSF2. Five general and one wall wash optic.

CFP

Edge-lit flat panel suitable for ISO Class 5-9 cleanrooms. Switchable lumens provides three configuration options for the right output with one easy switch.

SCALER

Edge-lit panel that is UL NSF 2 certified for non-food zones and suitable for ISO Class 5-9 cleanrooms . Four standard colors, color tuning options and integrated NX Lighting Controls.

OBEX

ISO 3 rated for positive and negative pressure cleanrooms 2x2, 2x4 and 1x4 fixture with options. NSF2, IP 65 rated 80 and 90 CRI white LED options including SpectraSync and narrow band color LED (red, amber, green and blue).

interior common areas

Excellent illumination enhances human experience within a facility. Solutions from Current merge technology with form to create welcoming environments for visitors while enabling productive and comfortable environments for staff members.



exterior common areas

Architectural lighting from Current vibrantly accents architectural features and landscape designs with exceptional optic control, color changing options, integrated controls, and audio systems.



LIGHTING SOLUTIONS FOR ANY COMPLEX SPACE – FROM THE BOARDROOM TO THE PARKING LOT – AND EVERYTHING IN BETWEEN



interior restricted areas

In functional areas, Current offers durable, high efficiency lighting products and networked control systems to optimize illumination and operating costs.



parking areas

Uniform, low glare lighting products from Current improve safety and security in high traffic areas. Improved visibility for pedestrians and motorists.



Current's legacy, lifesield's future...

Current is the combination of two iconic lighting businesses, Hubbell Lighting and GE Current, a Daintree Company.

At Current, inspiration flows both ways. In providing the lighting and controls solutions that help create beautiful, functional and safe environments, we're inspired by the people who live, work and play in those spaces.

We're also passionate about helping our customers solve complex challenges and see results, with reliable performance, responsive service, and uncompromising quality backed by 200 years of innovation.

Current's lighting roots run deep with a rich history of innovation, quality and reliability. From Thomas Edison's electric light bulb to Harvey Hubbell's pull chain socket, the Current foundation serves as the bedrock for the entire lighting industry. We've already made history, now we are forging the future with innovative lighting and controls setting new expectations for design, manufacturing and service.

Current

Current - HLI Brands

701 Millennium Blvd.
Greenville, SC 29607

currentlighting.com/lifesield

© 2025 HLI Solutions, Inc. All rights reserved. Information and specifications subject to change without notice.
All values are design or typical values when measured under laboratory conditions.

(Rev 05/05/2025)

LS_LSBrand_brochure_R03