



NX Lighting Controls

One Platform,
Boundless Solutions

Table of Contents

- 04 System Overview
- 06 Building Blocks
- 08 Room Control
- 10 NXP2 Panel
- 12 Connected Lighting- Indoor
- 14 Connected Lighting- Outdoor
- 16 Mobile App
- 18 NX Networking
- 20 Site Manager
- 22 Standalone Controls
- 24 Energy Savings Strategy & Code
- 26 Customer Experience
- 28 Product Catalog

Discover NX Lighting Controls

NX Lighting Controls delivers a fully distributed system of connected devices, sensors, and luminaires that deliver easy to design and install solutions to meet building code and reduce energy costs. Scale the system from basic lighting control at the luminaire or room level to a complete building or fully networked site with seamless integration of interior and exterior spaces. NX Lighting Controls provides a digital network for wired, wireless, and hybrid connectivity with device auto-configuration for out-of-the-box operation with mobile app for simple configuration and enterprise software to enable additional operational benefits.



System Overview



ONE SYSTEM WIRED AND WIRELESS

Inside and Out

INDOOR & OUTDOOR DEPLOYMENT

Single System for any commercial site spanning indoor and outdoor applications

CONNECTED LIGHTING PORTFOLIO

Broad offering of NX Enabled Luminaires that simplify installation and system costs

INTELLIGENCE IS IN OUR DNA

Utilizes a Distributed Network Architecture (DNA) to eliminate single point of failure to deliver unmatched reliability and scalability

SITE MANAGEMENT

NX Network provides single user interface for system maintenance and configuration

BUILDING INTEGRATION

The NX system is BTL certified ensuring a seamless experience with existing building management systems



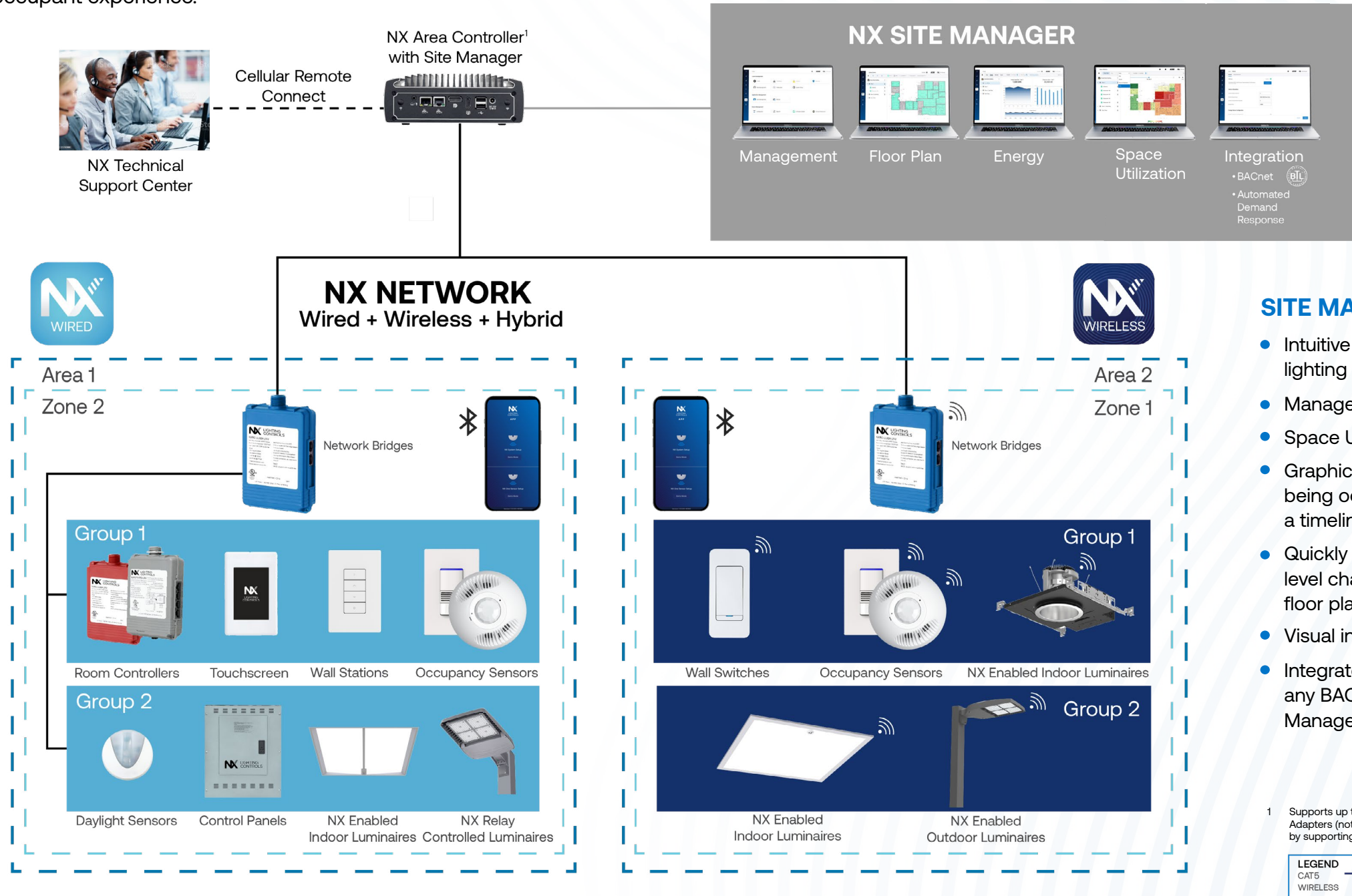
Building Blocks

NX System Overview

The NX Lighting Controls System provides all the building blocks necessary for a secure, on-premise enterprise lighting management system. The system not only controls lighting, but also provides actionable information to Building Owners and Facility Managers to create energy efficient spaces and improve occupant experience.

NX LIGHTING CONTROL SYSTEM

- Network of device and luminaires organized by Areas / Zones / Groups (AZG)
- NX wired & wireless devices and connected luminaires control lighting using relays and 0-10V dimming
- Wired devices connect using CAT5 cables and provide auto-configuration for basic code compliance
- Wireless devices are grouped together and communicate using secure AES 128-bit encrypted 2.4GHz wireless mesh technology based on the IEEE 802.15.4 standard. Network bridges manage NX Zones and connect wired and wireless zones to the NX Network
- NX Lighting Controls mobile app provides simple tool for quick device and system adjustments
- The NX Area Controller with Site Manager provides Building Owners & Facility Managers with multi-building lighting control, insights into their lighting system, and integration with Building Management Systems (BMS)



SITE MANAGER

- Intuitive web-based, comprehensive lighting management console
- Manage lighting schedules
- Space Utilization Application (Optional)
- Graphically view how spaces are being occupied within a facility over a timeline
- Quickly respond to requests for light level changes or reported issues from floor plan views
- Visual insights into energy usage
- Integrate the lighting system to any BACnet compatible Building Management System (BMS)

¹ Supports up to 1,000 NX Devices, Additional NXAC2 Site Manager Adapters (not shown) have the ability to expand the NX Network by supporting up to 1,000 additional NX Devices each.

LEGEND
CAT5
WIRELESS

PLATFORM SNAPSHOT					
Space Type	Architecture	Deployment	Connectivity	Integration Options	Advance Solutions
Interior & Exterior	Distributed	Standalone & Network	Wired, Wireless, Hybrid	Contacts, BACnet™, OpenADR 2.0a/2.0b	SpectraSync™

Room Control

Wired Solution

The NX Lighting Controls wired room control is a fully distributed digital lighting control solution for standalone and networked applications. With a plug-and-play auto-configuration feature using CAT5 connections NX delivers a quick and simple means to reduce installation time, meet code, and enable manual, daylight or scheduled based control at the room level.



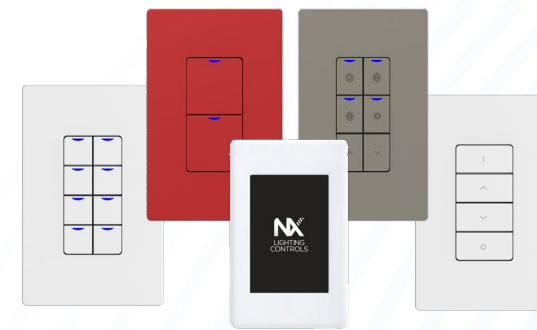
ROOM CONTROLLERS

- Real-time clock for scheduling at room control level
- Power metering
- Intelligent auto-configuration with device automatic code compliance
- CAT5 plug-and-play connectivity
- UL924 emergency solutions



SENSORS

- Passive Infrared, Ultrasonic & Dual Technology
- CAT5 plug-and-play connectivity
- Integrated 2.4GHz wireless mesh and bluetooth radio for easy commissioning & communication
- IntelliSCOPE™ compatible for real-time sensitivity reading and adjustment
- Indoor and outdoor daylight sensors



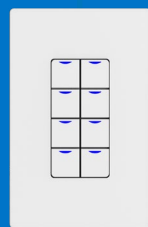
WALL SWITCHES

- Clean, unobtrusive & enduring design
- Smart Switches available in 1, 2, 3, 4, 5, 6, 8, and key switch versions
- Specialty versions available for out-of-box programming
- Offered in White, Gray, Black, Ivory, Light Almond, and Red
- Custom laser engraved buttons available for NX Smart Switches
- NX SimpleTouch single gang touch screen



INTERFACES

- Allow third party devices to digitally interface with the NX System
- Supports RS232 serial communications
- Supports A/V, dry contact outputs & inputs as well as HVAC options
- Enables Bluetooth commissioning with real-time clock option
- Wireless Radio interface with 2.4GHz mesh capabilities for NX Network communication



NX Wall Switch



NX OMNI Ceiling Sensor



NX Room Controller

NXP2 Panel

Wired Solution

The NX Lighting Control Panel (NXP2 Series) is a robust and reliable panel that can operate as a standalone or networked NX solution. The NX Panel meets all applicable code and energy requirements, is fully scalable, quick to install, and easy to program from the NX Lighting Controls mobile app.



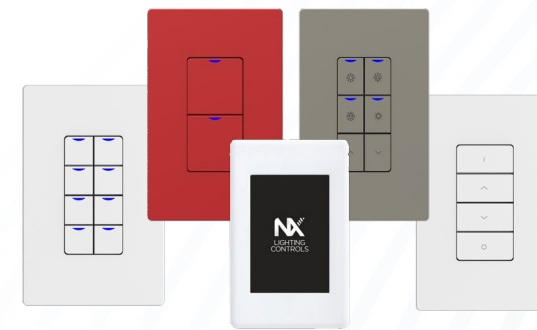
LIGHTING CONTROL PANELS

- Available in 8, 16, 24, 32 and 48 relay panel sizes
- Matching number of relays and dimming channels
- Programmable using Bluetooth® NX Lighting Controls mobile app using NXBT1 (included)
- Optional factory installed UL924 emergency control
- Contractor friendly installation and configuration



RELAYS

- Robust mechanically latching single and double pole relays
- Electrically rated for 60,000+ operations (30,000+ cycles) at full 20A load
- Mechanically rated for 120,000+ operations (60,000+ cycles)
- Manual override switch integral to relay
- At-A-Glance ON/OFF relay status indicator



WALL SWITCHES

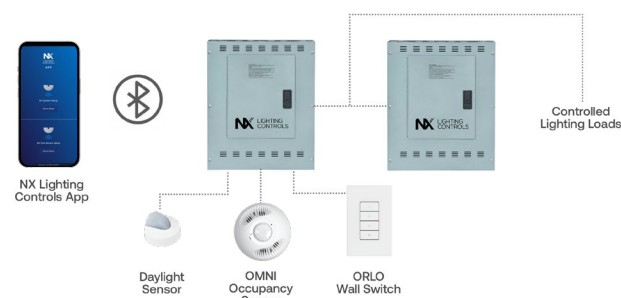
- Clean, unobtrusive & enduring design
- Smart Switches available in 1, 2, 3, 4, 5, 6, 8, and key switch versions
- Specialty versions available for out-of-box programming
- Offered in White, Gray, Black, Ivory, Light Almond, and Red
- Custom laser engraved buttons available for NX Smart Switches
- NX SimpleTouch single gang touch screen



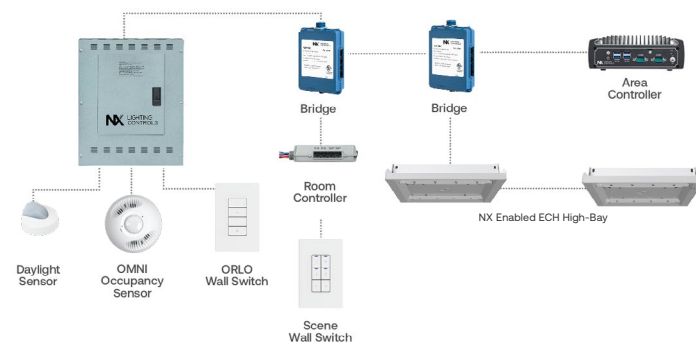
SENSORS

- Passive Infrared, Ultrasonic & Dual Technology
- CAT5 plug-and-play connectivity
- Integrated 2.4GHz wireless mesh and bluetooth radio for easy commissioning & communication
- IntelliSCOPE™ compatible for real-time sensitivity reading and adjustment
- Indoor and outdoor daylight sensors

Single & Multiple Panel Configurations



Networked Panel Deployment

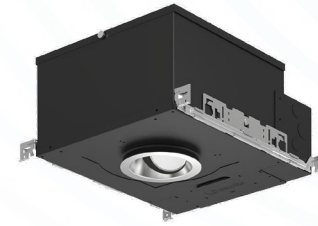


Connected Lighting - Indoor

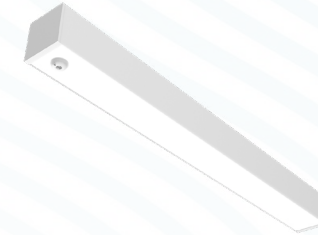
Wireless and Wired Solutions

NX Lighting Controls offers a broad portfolio of wireless control devices and enabled luminaires to create seamless scalable solutions from a single room to a complete networked campus.

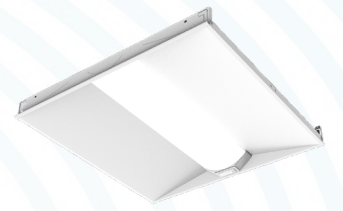
With the removal of wires and simple programming through mobile app or enterprise software, NX Wireless delivers design simplicity, reduced installation time and low-cost code compliance for both retrofit and new construction.



DOWNLIGHTS & CYLINDERS



LINEAR



TROFFERS & PANELS



STRIPS & WRAPS



RETROFIT KITS



HIGH BAYS



SENSORS

- Multiple form factors and coverage patterns for integrated sensors
- Room Control sensors can seamlessly connect with NX enabled Luminaires



INTEGRATED SOLUTIONS

- Integrated Radio Module provides wireless connectivity for NX Devices to the NX Network
- Dual SmartPORT adapters allow for wired CAT5 connection of NX enabled Luminaires



WALL SWITCHES

- Battery Operated Wireless Rocker Switch
- Programmable to multiple switch types

Please scan QR code to view complete list of NX enabled luminaires from Current.



Connected Lighting - Outdoor

Wireless Solutions

NX Lighting Controls offers a broad portfolio of wireless control devices and NX enabled luminaires to deliver a scalable solution to support a variety of outdoor standalone and networked applications. With the removal of wires and simple programming through mobile app or enterprise software, NX Wireless provides a cost-effective install with multiple integrated control methods to comply with code and reduce energy costs.



SITE & AREA



BOLLARD



FLOOD & WALL MOUNT



CANOPY & GARAGE



SENSORS

- Multiple form factors and coverage patterns for integrated sensors
- IP65 rated versions for outdoor applications



INTEGRATED SOLUTIONS

- Integrated Radio Module provides wireless connectivity for NX Devices to the NX Network
- The NX 7-pin On-Fixture Module provides a single pole relay, 0-10V connection, Bluetooth® radio, and wireless 2.4GHz radio in a single package



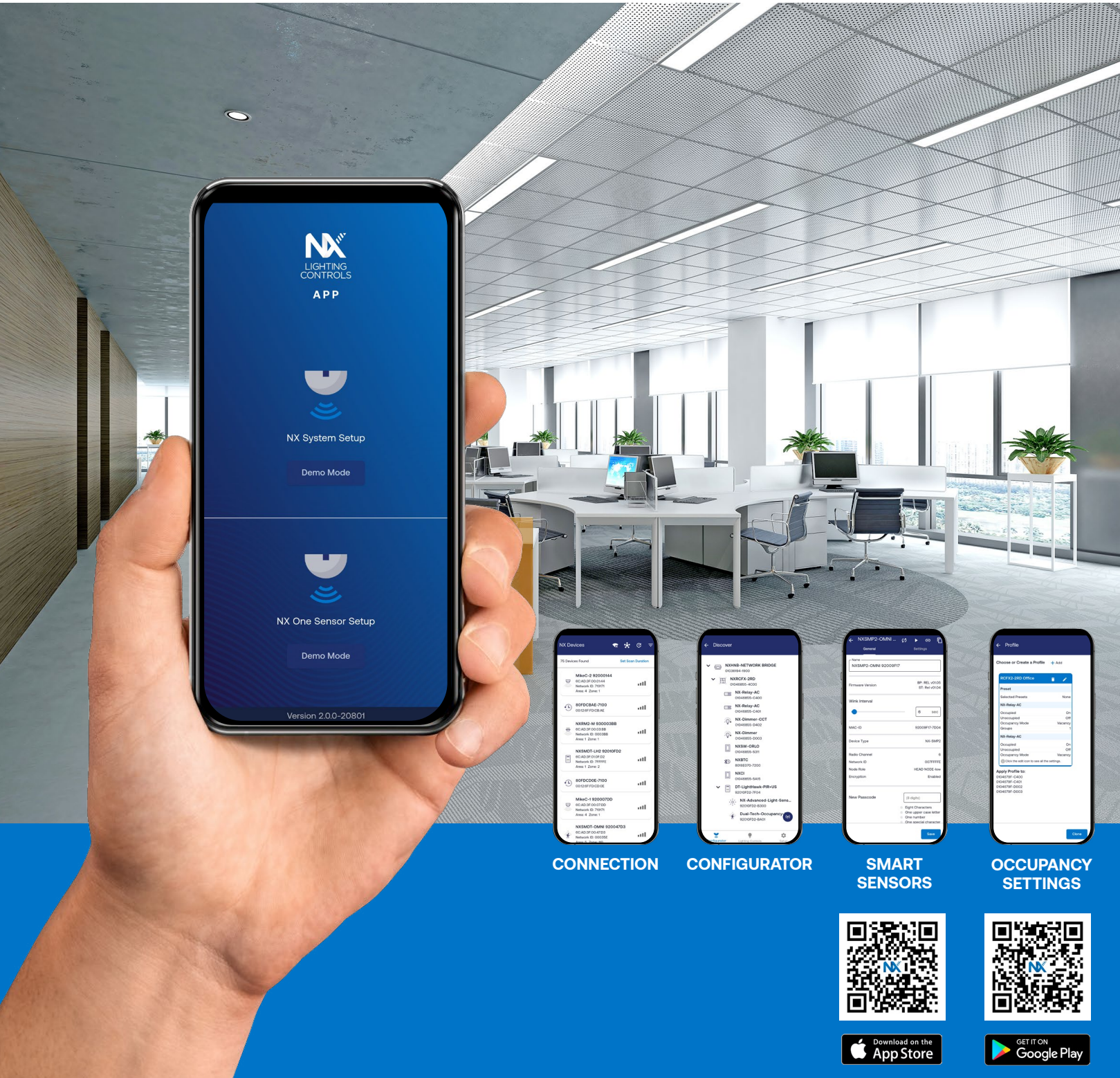
Mobile App

Discovery and Programming App

The NX Lighting Controls mobile app helps provide quick, simple installation, and programming right in the palm of your hand.

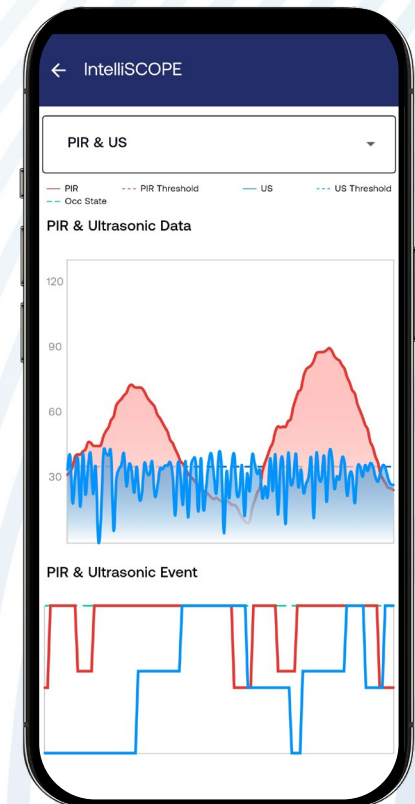
The NX Lighting Controls mobile app is a free to use mobile application for programming both an NX Lighting Controls System or Standalone Bluetooth Sensors. The app allows you to discover and configure wired and wireless devices and setup groups and zones for both standalone and networked NX sites. The app also provides access to IntelliSCOPE™ for real time occupancy data with any digital NX or standalone Bluetooth sensor. The NX Lighting Controls mobile app is available for download on both Apple iOS and Android devices.

- Enables easy setup, configuration and diagnostics of standalone Bluetooth sensors, NX room devices and NXP2 lighting control panels via Bluetooth BLE
- Create custom holidays, schedules, and presets (lighting scenes)
- Set geographical location of site for sunrise/sunset schedules
- Simple configuration of relay and dimmer settings for selected areas and zones
- Passcode protected to prevent unauthorized access to system
- Supports OTA (Over The Air) device updates
- Features IntelliSCOPE™ diagnostic tool for real-time calibration and testing of NX digital smart sensors



All NX wireless sensors come enabled with our proprietary IntelliSCOPE™ functionality, which provides true ladder-less programming and installation all with the click of a button.

IntelliSCOPE™ provides real-time occupancy data to help optimize sensor detection in any application, which helps save time and money.



NX Networking

Building and Site Networking

The NX Networked devices provide a simplistic approach to networked lighting controls that are cost-effective and flexible for diverse applications. NX Network devices seamlessly connect across both indoor and outdoor applications through wired, wireless, or hybrid deployments.



NX AREA CONTROLLER

- On-premise solid state controller with Intel I7 CPU, 16GB Memory, and 500GB SSD
- Multi-layer network security and access control (ioXt Certified)
- Integrates NX Lighting Control System with Building Management Systems (BMS) via BACnet IP interface (BTL Listed)
- Integrated remote connection provides access to NX customer support team assistance
- Supports up to 1,000 NX devices
- DIN rail mounting (DIN rail kit included)



NX BRIDGE

- Connects individual Zone Segments to main NX Network Segment
- Serves as a repeater to extend the NX Network Segment
- Connects Wired and Wireless Zones
- Multiple bridges can be connected to extend the number of devices in a Zone Segment
- Built-in time clock keeps zone devices and schedules synchronized



POE SWITCH

- Expands NX Network into 7 segments
- Each port is powered and can supply DC power to connected NX Bridges
- 24V AC/DC power supply included



MEDIA CONVERTER

- Provides ability to extend NX Network across large distances (up to 5km between media converter devices)
- Enables NX Network to span separate buildings with different ground planes
- Multi-mode operation supports copper CAT5 and fiber connections



NX Area Controller



NX PoE Switch

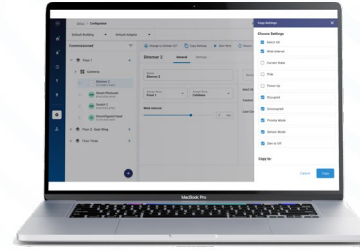
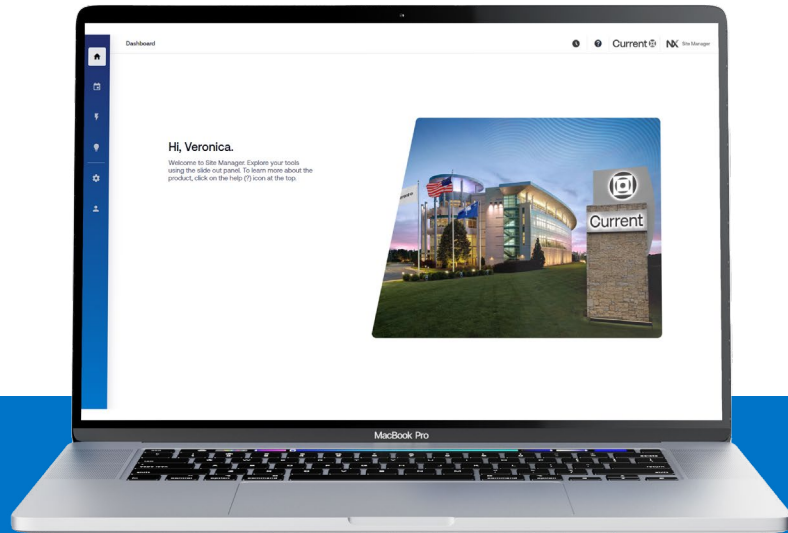


NX Bridge

Site Manager

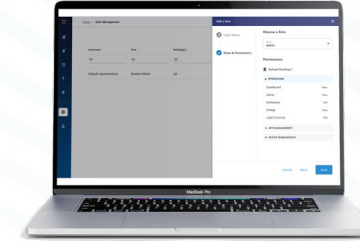
On-premises Enterprise Software Platform

NX Site Manager is a web-based application for the NX Lighting Control System providing multiple modes of operation, improved facility, user, and device management. It also features facility-wide view of schedules, system reports and the ability to configure multiple OpenADR 2.0a/2.0b Demand Response levels. In addition, NX Site Manager provides optional features including zone status and control via floor plans and energy dashboard for improved operational efficiencies.



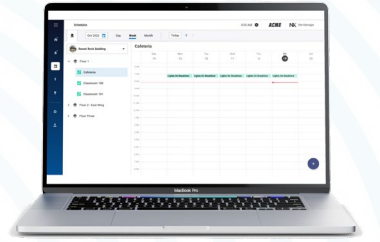
INTUITIVE USER INTERFACE

- Real-time programming & management of the NX Lighting Control System
- Commissioning & Facility Manager modes
- Supports multiple operations being performed simultaneously



USER MANAGEMENT

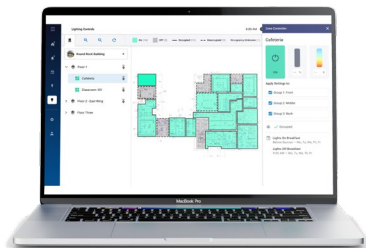
- Create user roles (e.g. System Admin, Facility Manager, General User)
- Specify role permissions and assign areas of responsibility
- Add users, assign roles & permissions, activate & lock user accounts, or delete user accounts



FACILITY SCHEDULE

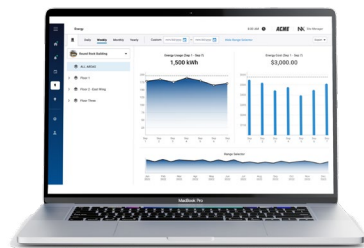
- View/modify all zone schedules across a facility
- Easy to use calendar viewing modes including by day or week
- View and modify schedules by selecting a zone or by selecting the schedule from the calendar

Optional Site Manager Modules



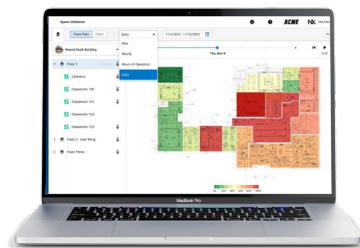
ZONE STATUS/CONTROL VIA FLOOR PLANS

- Import floor plan images in multiple file formats
- Create/modify/delete zones on floor plans
- View zones status (e.g. on/off state, occupied unoccupied state) using color coding and easy to differentiate status borders for "color blind" users



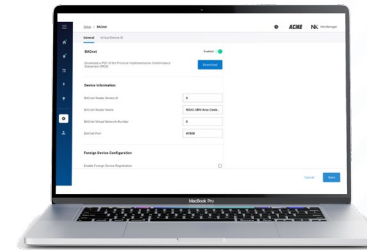
ENERGY DASHBOARD

- Easy to read graphical view of lighting energy usage and costs for a building, area or zone
- View energy data in daily, weekly, monthly, yearly or custom date ranges
- Use insights to decrease lighting system energy usage and decrease operational costs



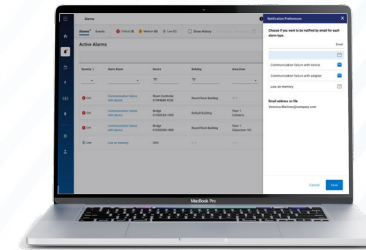
SPACE UTILIZATION

- Provides insights into how spaces are being utilized within a facility
- Graphically view space utilization data on floor plans or charts
- Playback mode displays recorded data over multiple timelines



INTEGRATION INTERFACES

- Embedded field configurable BACnet IP client
- Enables integration of NX Lighting Controls System with Building Management Systems (BMS)
- Configure multiple demand response levels for OpenADR 2.0a/2.0b integration



ALARMS / NOTIFICATIONS

- Get notified of system alarms via e-mail notifications
- View history of alarms and system events based on a date range
- Configurable alarm email notification preferences

Standalone Controls

Broad selection of devices to meet your project needs



OMNI CEILING MOUNT OCCUPANCY SENSOR

- PIR, Ultrasonic & Dual Technology options
- Proprietary IntelliDAPT® Technology
- 500 – 2000 sqft coverage
- Line and low-voltage versions



LIGHTOWL WALL MOUNT OCCUPANCY SENSOR

- PIR, Ultrasonic & Dual Technology options
- Proprietary IntelliDAPT Technology
- 450 – 1600 sqft coverage
- Wide View, High Bay and Outdoor versions



LIGHTHAWK WALL SWITCH OCCUPANCY SENSOR

- PIR, Ultrasonic & Dual Tech Options
- Proprietary IntelliDAPT Technology
- 400 – 1000 sqft coverage
- Single & Dual Circuit Control
- RhinoTuff vandal resistant lens
- Line and low-voltage versions



NX CONNECT

- Simple room-based wireless controls programmed from the NX Connect mobile app
- In-Fixture wireless sensor options
- Single, dual, or three group wireless room controllers
- Battery Operated wireless ceiling mount occupancy and daylight sensor
- Battery Operated wireless switches and a self-powered wireless rocker switch



EMERGENCY DEVICES

- Automatic Load Control Relays
- Dual Voltage, 120V or 277V operation
- Provision for remote test button or fire alarm interface
- UL1008 Branch Circuit Transfer Relay
- Works with both inverter and generator systems
- Attractive Flush Mount Emergency Remote Test Button
- Low Voltage Class 2 Device



DAYLIGHT SENSORS

- Open Loop and Closed Loop photo sensors
- Foot-candle range: 3 – 6,000 fc
- Indoor and outdoor versions
- Low-profile design



WASP FIXTURE MOUNT SENSOR

- On/Off Control & 0-10V Dimming
- Integrated photocell for daylight harvesting applications
- Lens options for Low to High Bay applications
- Available in surface mount and end mount options
- Line and low-voltage versions



BLUETOOTH WASP FIXTURE MOUNT SENSOR

- On/Off Control & 0-10V Dimming
- Bluetooth programming via NX Lighting Controls App
- Tri-level set points
- IntelliSCOPE™ for real-time occupancy data
- Integrated photocell for daylight harvesting applications
- Multiple Lens Options for Low to High Bay Applications
- Line and low-voltage versions



BLUETOOTH SMP FIXTURE MOUNT SENSOR

- 0-10V dimming with dim-to-off driver
- Bluetooth programming via NX Lighting Controls App
- High and Low mount sensor options
- Multiple form factors and coverage patterns
- IntelliSCOPE™ for real-time occupancy data
- Photocell for daylight harvesting applications



CX LIGHTING CONTROLS PANEL

- Compact single enclosure with multiple size offerings for flexible and cost-effective installation
- Astronomical and real time clock for scheduling
- LCD user interface with keypad for easy and intuitive programming
- Allows for connection of low voltage devices directly to panel without any ancillary parts



WALLBOX DIMMERS

- Standalone Switch
- Full Range dimming
- Separate On/Off
- Single & 3-Way
- 120/277V Dimming Options



LOW VOLTAGE SWITCHES

- Standalone Switch
- On/Off and Dimming Versions
- 1-4 Button options
- Latching & Momentary options
- 24 VDC

Energy Savings Strategy & Code

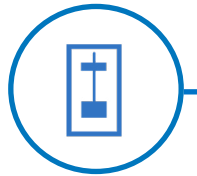
Code Compliance at Every Level of Scalability

From a single standalone room or luminaire solution to a complete networked building approach, NX can maximize energy savings and meet or exceed today's energy code requirements.



HIGH END TRIM

An artificial maximum light output set below actual maximum light output for each space



MULTI-LEVEL CONTROL

Providing additional light levels in a space beyond Full ON and Full OFF



SCHEDULING

Controls light levels based on facility schedule

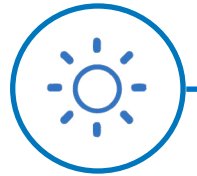
ASTRONOMICAL TIME CLOCK

Controls light levels based on sunrise/sunset and project location



SETBACK

Automatically turns lights down to a reduced level after all occupants leave the area



CONTINUOUS DAYLIGHTING

Automatically turns lights down to a reduced level based on the amount of daylight present in a space



DEMAND RESPONSE

A defined temporary reduction of lighting load or load shedding in response to a request from an energy authority such as a utility or regional transmission operator



BMS INTEGRATION

The data exchange for control and monitoring from a facilities Building Management System or Energy Management System using a common protocol such as BACnet™



PARTIAL ON

Automatically turns lights on to a reduced level between full on and full off when occupants enter the space

PARTIAL OFF

Automatically turns lights down to a reduced level between full on and full off after all occupants leave the space

STANDARDS & CODES	ENERGY CODES			NX SCALABLE SOLUTIONS		
	IECC-2021	ASHRAE-2022	TITLE 24 PART 6 2023	LUMINAIRE	ROOM	BUILDING



INDOOR						
High End Trim				•	•	•
Local Control	C405.2.2.3	9.4.1.1 (a)	130.1 (a)	•	•	•
Multi-Level Control	C405.2.2.2	9.4.1.1 (b)	130.1 (b)	•	•	•
Scheduling	C405.2.2.1	9.4.1.1 (i)	130.1 (c) 4	•	•	•
Occupancy Sensor Full OFF	C405.2.1.1	9.4.1.1 (h)	130.1 (c) 6	•	•	•
Occupancy Sensor Partial ON	C405.2.1.1	9.4.1.1 (c)	130.1 (c) 5	•	•	•
Occupancy Sensor Partial OFF	C405.2.1.2	9.4.1.1 (g)	130.1 (c) 6	•	•	•
Continuous Daylighting	C405.2.3	9.4.1.1 (e)	130.1 (d)	•	•	•
Plug Load Control		8.4.2	130.5 (d)		•	•
Demand Response			130.1 (e)	Contact Closure	Contact Closure	BACnet™
BMS Integration				Contact Closure	Contact Closure	BACnet™
OUTDOOR						
Astronomical Time clock	C405.2.5(2)	9.4.1.4 (b)	C405.2.2.3	•		•
Setback	C405.2.5(3)	9.4.1.4 (d)	C405.2.2.3	•		•
Daylight OFF	C405.2.5(1)	9.4.1.4 (a)	C405.2.2.3	•		•
Demand Response				Contact Closure		BACnet™
BMS Integration				Contact Closure		BACnet™

Comprehensive Support Options to Meet Project Needs

Contact Us

Call (800) 888-8006 and select one of the options listed below



Tech Support Hours: 7:00am - 7:00pm EST, Monday - Friday

Quotes, Applications, Layouts and Submittal Requests:
controls-Design@currentlighting.com

Technical Support (troubleshooting, specifications, programming):

currentlighting.com/controls/technical-services



Phone and Remote Support

While it is our goal to provide you with intelligent, simple and scalable control solutions, customer experience level and project complexity may necessitate additional support during the design development, construction and post-occupancy stages of a project. The support team is available for consultation to evaluate multiple control scenarios to identify the ideal lighting control device or system to meet energy code requirement and customer criteria. Additionally, our team of friendly and experienced professionals is enabled to assist on-site personnel, such as installation contractors, third party integrators, certified field technicians and facilities personnel, to quickly resolve issues and provide additional support.

Warranty

Current provides a 5-year limited warranty for LED luminaires and Lighting Controls devices.



On-site Support

Current offers on-site support service to ensure your project goes smoothly. While Current products are designed with simplicity in mind, some projects may benefit from a Field Service Engineer to perform an on-site pre-installation walk-through, after-hours and remote startup assistance, occupant training, sensor tuning, preset programming and other pre/post-occupancy services.

Design Services



Our team of lighting control system design professionals are available to provide sensor layouts, networked system design services and third party integration support for new and retrofit projects. Our goal is to provide you with on-time and accurate delivery of design deliverables optimized for your specific application, compliant with local building codes and project specifications.

The Institute



Classroom Education

Current offers cutting edge educational opportunities at Institute facilities across the United States. Our headquarters, located in Greenville, SC houses one of the industries largest training facilities with over 25,000 square-feet and is engineered to present a total solutions approach to your lighting and controls challenges.

Additionally, we have dedicated Institute facilities in North Carolina and Texas as well as Current facility classrooms for in-person instruction across the United States.

Virtual Education

Current's virtual education opportunities cover many facets of the lighting and controls industry including fundamentals, trends, technology, and product solutions. In addition, we can provide accredited continuing education (CEU) modules to help you maintain your certifications.

Engage with us in a way that's best for you!

- An online university with modules designed for self pace individual learning consumed on-demand.
- Live (private) instructor-led training private events for individuals within your own organization designed specifically for your needs.
- Live (public) instructor led training public events highlighting new technologies, continuing education, and lighting trends.



Product Catalog

CATALOG NO.	DESCRIPTOR	COLORS
AREA CONTROLLERS		
NXAC2-120-SM	NX Area Controller V2 w/ NX Site Manager, NX Network, BACnet, 120V	Black
NXAC2-120-SMA	NX Area Controller V2 w/NX Site Manager Adapter, NX Network, 120V	Black
NETWORK DEVICES		
NXHNB2	NX Network Bridge Module, Connects Wired and Wireless Zones to NX Network, Internal Time Clock, Low Voltage	Blue
NXPOE-7-24B	NX POE Switch/Power Injector, Seven RJ45 Powered NX Network Ports, One RJ45 Powered Uplink Port, 24VDC Power Supply (Included)	Black
NX-EOF-MC-01	NX Media Converter, Ethernet Over Fiber, Copper: Single RJ45 Port (10/100BASE-T), Fiber: ST Connector (100BASE-X), 120V	Gray
ROOM CONTROLLERS		
NXRCFX2-1RD-UNV	NX Room Controller, FX Bus Compatible, 1 Relay, 0-10V Dimming, Universal Voltage	Gray
NXRCFX2-2RD-UNV	NX Room Controller, FX Bus Compatible, 2 Relay, 0-10V Dimming, Universal Voltage	Gray
NXRC-UL924-UNV	UL924 Emergency Load Controller, 1 Relay, 0-10V Dimming, Universal Voltage	Red
OCCUPANCY SENSORS		
NXSMDT-OMNI-XX	NX Digital Smart Occupancy Sensor, Ceiling Mount, PIR and Ultrasonic, with Daylight Harvesting, Integrated Bluetooth, mini SmartPORT	White, Black, Gray
NXSMDT-LH0-XX	NX Digital Smart Occupancy Sensor, Wall Switch, PIR and Ultrasonic, with Daylight Harvesting, Integrated Bluetooth, Dual RJ45 SmartPORT, 0 Button	White, Black, Gray, Ivory, Light Almond, Red
NXSMDT-LH1-XX	NX Digital Smart Occupancy Sensor, Wall Switch, PIR and Ultrasonic, with Daylight Harvesting, Integrated Bluetooth, Dual RJ45 SmartPORT, 1 Button	White, Black, Gray, Ivory, Light Almond, Red
NXSMDT-LH2-XX	NX Digital Smart Occupancy Sensor, Wall Switch, PIR and Ultrasonic, with Daylight Harvesting, Integrated Bluetooth, Dual RJ45 SmartPORT, 2 Button	White, Black, Gray, Ivory, Light Almond, Red
NXSMIR-LH0-XX	NX Digital Smart Occupancy Sensor, Wall Switch, PIR, with Daylight Harvesting, Integrated Bluetooth, Dual RJ45 SmartPORT, 0 Button	White, Black, Gray, Ivory, Light Almond, Red
NXSMIR-LH1-XX	NX Digital Smart Occupancy Sensor, Wall Switch, PIR, with Daylight Harvesting, Integrated Bluetooth, Dual RJ45 SmartPORT, 1 Button	White, Black, Gray, Ivory, Light Almond, Red
NXSMIR-LH2-XX	NX Digital Smart Occupancy Sensor, Wall Switch, PIR, with Daylight Harvesting, Integrated Bluetooth, Dual RJ45 SmartPORT, 2 Button	White, Black, Gray, Ivory, Light Almond, Red
INTEGRATED SENSORS		
NXSMP2-OMNI	NX Digital Smart PIR Occupancy Sensor with Photocell and Bluetooth Programming, 360° Lens	White, Black, Gray
NXSMP2-LMI	NX Digital Smart PIR Occupancy Sensor with Photocell and Bluetooth Programming, Low Mount/Indoor, 360° Lens	White, Black, Gray
NXSMP2-HMO	NX Digital Smart PIR Occupancy Sensor with Photocell and Bluetooth Programming, High Mount/Outdoor, 360° Lens	White, Black, Gray
NXSMP2-LMO	NX Digital Smart PIR Occupancy Sensor with Photocell and Bluetooth Programming, Low Mount/Outdoor, 360° Lens	White, Black, Gray
DAYLIGHT SENSORS		
NXDS	NX Daylight Sensor	White
NXDS-O	NX Daylight Sensor Outdoor	White

CATALOG NO.	DESCRIPTOR	COLORS
WALL SWITCHES		
NXSW2-1-XX	NX Digital Smart Switch, 1 Button, Momentary, Pilot	White, Black, Gray, Ivory, Light Almond, Red
NXSW2-2-XX	NX Digital Smart Switch, 2 Button, Momentary, Pilot	White, Black, Gray, Ivory, Light Almond, Red
NXSW2-3-XX	NX Digital Smart Switch, 3 Button, Momentary, Pilot	White, Black, Gray, Ivory, Light Almond, Red
NXSW2-4-XX	NX Digital Smart Switch, 4 Button, Momentary, Pilot	White, Black, Gray, Ivory, Light Almond, Red
NXSW2-5-XX	NX Digital Smart Switch, 5 Button, Momentary, Pilot	White, Black, Gray, Ivory, Light Almond, Red
NXSW2-6-XX	NX Digital Smart Switch, 6 Button, Momentary, Pilot	White, Black, Gray, Ivory, Light Almond, Red
NXSW2-8-XX	NX Digital Smart Switch, 8 Button, Momentary, Pilot	White, Black, Gray, Ivory, Light Almond, Red
NXSW2-ORLO-XX	NX Digital Specialty Switch, On/Raise/Lower/Off	White, Black, Gray, Ivory, Light Almond, Red
NXSW2-OO-XX	NX Digital Specialty Switch, On/Off	White, Black, Gray, Ivory, Light Almond, Red
NXSW2-SS-XX	NX Digital Specialty Switch, Scene Switch	White, Black, Gray, Ivory, Light Almond, Red
NXSW2-CCT-XX	NX Digital Specialty Switch, CCT	White, Black, Gray, Ivory, Light Almond, Red
NXSW2-KEY-MNTD1-XX	NX Digital Specialty Key Switch, Maintained 1 Pole/Single Throw	White, Black, Gray, Ivory, Light Almond, Red
NXSW2-KEY-MTRY1-XX	NX Digital Specialty Key Switch, Momentary 1 Pole/Single Throw	White, Black, Gray, Ivory, Light Almond, Red
NXSW2-KEY-MTRY2-XX	NX Digital Specialty Key Switch, Momentary 1 Pole/Double Throw	White, Black, Gray, Ivory, Light Almond, Red
NXSW-TH3-WH	NX SimpleTouch 3.5" full color graphic wall station	White
NXSW-WRS-WH	NX Battery Powered Digital Switch Station, 2 Button configurable	White
INTERFACES		
NXCI	NX Contact Closure Interface Module, Removable Terminal Block with 2 Switch Inputs, Dual RJ45 SmartPORTS	Silver
NXAVM	NX Audio Visual Interface Module, Single DB9 Connector for RS232 Serial Communications, ASCII Based Command Set, Single RJ45 SmartPORT	Silver
NXHDI	NX Network Device Interface Module, Connects NXSP and NXCIO Devices to NX Network, Dual RJ45 SmartPORTS, DIN Rail Mount	Blue
NXSP	NX SmartPORT Module, 4 SmartPORTS (8 RJ45 Connectors), DIN Rail Mount	Blue
NXDCIO	NX Dry Contact Interface Module, 6 Low Voltage Inputs, 6 Form C NO/NC Outputs, DIN Rail Mount	Blue
NXDCO	NX Dry Contact Output Module	Blue
NXOADR2-VEN-DC	NX OpenADR 2.0a/2.0b Bidirectional Virtual End Node (VEN) Module with Two NO/NC Dry Contact Outputs, 120V	Black
RADIO MODULES		
NXOFM-1R1D-UNV	NX 7-Pin On-Fixture Module, 1 Relay, 1 Dimmer, Universal Voltage (120V-480V)	Black
NXR2M-H	NX Network Radio Module with Bluetooth Programming, 12 VDC, ISM 2.4GHz	White, Black, Gray
NXBTI	NX Bluetooth Radio Bridge, Password Protection	Blue







Product Catalog

CATALOG NO.	DESCRIPTOR	COLORS
ACCESSORIES		
NXRJSPLITTER	NX RJ45 Splitter 2-way Female for CAT5	Ivory
RJ45ADAPTER	NX RJ45 Splitter 2-way Female for CAT5	Gray
NXFRD-UNV	NX Forward & Reverse Phase Dimming Converter	Black
NXWPS	NX Wall Partition Sensor	White
LIGHTING CONTROL PANELS		
NXP2-PNL-8-8-U-S	NX Lighting Control Panel V2, 8 Relay Capacity, 8 Dimming Channels, 8-20A/Single Pole Latching Relays, 120/277VAC, Surface Mount	Gray
NXP2-PNL-8-0-U-S	NX Lighting Control Panel V2, 8 Relay Capacity, 8 Dimming Channels, Relays Not Included, 120/277VAC, Surface Mount	Gray
NXP2-PNL-16-16-U-S	NX Lighting Control Panel V2, 16 Relay Capacity, 16 Dimming Channels, 16-20A/Single Pole Latching Relays, 120/277VAC, Surface Mount	Gray
NXP2-PNL-16-0-U-S	NX Lighting Control Panel V2, 16 Relay Capacity, 16 Dimming Channels, Relays Not Included, 120/277VAC, Surface Mount	Gray
NXP2-PNL-24-24-U-S	NX Lighting Control Panel V2, 24 Relay Capacity, 24 Dimming Channels, 24-20A/Single Pole Latching Relays, 120/277VAC, Surface Mount	Gray
NXP2-PNL-24-0-U-S	NX Lighting Control Panel V2, 24 Relay Capacity, 24 Dimming Channels, Relays Not Included, 120/277VAC, Surface Mount	Gray
NXP2-PNL-32-32-U-S	NX Lighting Control Panel V2, 32 Relay Capacity, 32 Dimming Channels, 32-20A/Single Pole Latching Relays, 120/277VAC, Surface Mount	Gray
NXP2-PNL-32-0-U-S	NX Lighting Control Panel V2, 32 Relay Capacity, 32 Dimming Channels, Relays Not Included, 120/277VAC, Surface Mount	Gray
NXP2-PNL-48-48-U-S	NX Lighting Control Panel V2, 48 Relay Capacity, 48 Dimming Channels, 48-20A/Single Pole Latching Relays, 120/277VAC, Surface Mount	Gray
NXP2-PNL-48-0-U-S	NX Lighting Control Panel V2, 48 Relay Capacity, 48 Dimming Channels, Relays Not Included, 120/277VAC, Surface Mount	Gray
RELAYS		
NXP2-RL2-SP	NX Lighting Control Panel V2 Relay, Single Pole, Latching, General Use: 30A@347VAC; Tungsten: 1920W@120VAC; (Standard) Ballast: 10A@347VAC; E-Ballast: 16A@277VAC	Black
NXP2-RL-DP	NX Lighting Control Panel V2 Relay, Double Pole, Latching, 208/240/480V, 20A- 50/60 Hz	Black

CATALOG NO.	DESCRIPTOR	COLORS
NX IN-FIXTURE CABLES		
NXCBL-P-10	NX mini-Smart Port to Female RJ45 Plenum Cable, 10" length	Gray
NXCBL-P2-12	NX mini-Smart Port to Dual RJ45 Plenum Cable, 12" length	Gray
CAT5 SYSTEM CABLES		
CAT5-3IN-OR-PLENUM	CAT5 Cable, Plenum Rated, 3IN	Orange
CAT5-3F-OR-PLENUM	CAT5 Cable, Plenum Rated, 3F	Orange
CAT5-10F-OR-PLENUM	CAT5 Cable, Plenum Rated, 10F	Orange
CAT5-25F-OR-PLENUM	CAT5 Cable, Plenum Rated, 25F	Orange
CAT5-50F-OR-PLENUM	CAT5 Cable, Plenum Rated, 50F	Orange
CAT5-100F-OR-PLENUM	CAT5 Cable, Plenum Rated, 100F	Orange

NX Integrated Control Options for Indoor Luminaires Ordering Logic and Description		Control Option Functionality							Control Option Components		
		Networkable	Grouping	Scheduling	Occupancy / Motion	Daylight Harvesting	0-10V Dimming	On/Off Control			Bluetooth® App Programming
NX Wireless	NXW	NX Networked Wireless Radio Module NXRM2 and Bluetooth Programming, without Sensor	✓	✓	✓	-	-	✓	✓	✓	NXRM2-H
	NXWSM	NX Networked Wireless Enabled Integral NXSMP2-SMI PIR Occupancy Sensor with Automatic Dimming Photocell and Bluetooth® Programming	✓	✓	✓	✓	✓	✓	✓	✓	NXSMP2-SMI
	NXWRM	NX Networked Wireless Enabled Integral NXSMP2-LMI PIR Occupancy Sensor with Automatic Dimming Photocell and Bluetooth® Programming	✓	✓	✓	✓	✓	✓	✓	✓	NXSMP2-LMI
	NXWOM	NX Networked Wireless Enabled Integral NXSMP2-OMNI PIR Occupancy Sensor with Automatic Dimming Photocell and Bluetooth® Programming	✓	✓	✓	✓	✓	✓	✓	✓	NXSMP2-OMNI
	NXWLM	NX Networked Wireless Enabled Integral NXSMP2-LMO PIR Occupancy Sensor with Automatic Dimming Photocell and Bluetooth® Programming	✓	✓	✓	✓	✓	✓	✓	✓	NXSMP2-LMO
	NXWHM	NX Networked Wireless Enabled Integral NXSMP2-HMO PIR Occupancy Sensor with Automatic Dimming Photocell and Bluetooth® Programming	✓	✓	✓	✓	✓	✓	✓	✓	NXSMP2-HMO
	NXE	NX Wired Dual RJ45 SmartPORTS, without Sensor	✓	✓	✓	-	-	✓	✓	✓	NXDSP
NX Wired	NXESM	NX Wired Dual RJ45 SmartPORTS and Integral NXSMP2-SMI PIR Occupancy Sensor with Automatic Dimming Photocell and Bluetooth® Programming	✓	✓	✓	✓	✓	✓	✓	✓	NXDSP NXSMP2-SMI
	NXERM	NX Wired Dual RJ45 SmartPORTS and Integral NXSMP2-LMI PIR Occupancy Sensor with Automatic Dimming Photocell and Bluetooth® Programming	✓	✓	✓	✓	✓	✓	✓	✓	NXDSP NXSMP2-LMI
	NXEOM	NX Wired Dual RJ45 SmartPORTS and Integral NXSMP2-OMNI PIR Occupancy Sensor with Automatic Dimming Photocell and Bluetooth® Programming	✓	✓	✓	✓	✓	✓	✓	✓	NXDSP NXSMP2-OMNI
	NXELM	NX Wired Dual RJ45 SmartPORTS and Integral NXSMP2-LMO PIR Occupancy Sensor with Automatic Dimming Photocell and Bluetooth® Programming	✓	✓	✓	✓	✓	✓	✓	✓	NXDSP NXSMP2-LMO
	NXEHM	NX Wired Dual RJ45 SmartPORTS and Integral NXSMP2-HMO PIR Occupancy Sensor with Automatic Dimming Photocell and Bluetooth® Programming	✓	✓	✓	✓	✓	✓	✓	✓	NXDSP NXSMP2-HMO

*Please reference Current luminaire specification sheets for option availability.

NX Integrated Control Options for Outdoor Luminaires Ordering Logic and Description		Control Option Functionality								Control Option Components			
		Networkable	Grouping	Scheduling	Occupancy	Daylight Harvesting	0-10V Dimming	On/Off Control	Bluetooth App Programming				
NX Wireless	NXOFM1R1D-UNV* <small>(sold separate from luminaire)</small>	NX 7-Pin Twist-Lock® with NX Networked Wireless Radio, Integral Automatic Dimming Photocell, Integral Single Pole Relay with Dimming, and Bluetooth Programming		✓	✓	✓	-	✓	✓	✓	✓		NXOFM-1R1D-UV
	NXW	NX Networked Wireless Radio Module NXRM2 and Bluetooth Programming, without Sensor		✓	✓	✓	-	-	✓	✓	✓		NXRM2-H
	NXWOM	NX Networked Wireless Enabled Integral NXSMP2-OMNI PIR Occupancy Sensor with Automatic Dimming Photocell and Bluetooth Programming		✓	✓	✓	✓	✓	✓	✓	✓		NXSMP2-OMNI
	NXWS12F	NX Networked Wireless Enabled Integral NXSMP2-OMNI-O PIR Occupancy Sensor with Automatic Dimming Photocell and Bluetooth Programming		✓	✓	✓	✓	✓	✓	✓	✓		NXSMP2-OMNI-O
	NXWS16F	NX Networked Wireless Enabled Integral NXSMP2-LMO PIR Occupancy Sensor with Automatic Dimming Photocell and Bluetooth Programming		✓	✓	✓	✓	✓	✓	✓	✓		NXSMP2-LMO
	NXWS40F	NX Networked Wireless Enabled Integral NXSMP2-HMO PIR Occupancy Sensor with Automatic Dimming Photocell and Bluetooth Programming		✓	✓	✓	✓	✓	✓	✓	✓		NXSMP2-HMO

*Please reference Current luminaire specification sheets for option availability.



ARCHITECTURAL AREA LIGHTING

BEACON

COLUMBIA LIGHTING

COMPASS

DUAL-LITE

EXO

FORUM

KIM LIGHTING

KURT VERSEN

LIFESHIELD

LITECONTROL

NX LIGHTING CONTROLS

PRESCOLITE

Current - HLI Brands

701 Millennium Blvd.
Greenville, SC 29607

currentlighting.com/nx-lighting-controls

© 2024 HLI Solutions, Inc. All rights reserved. Information and specifications subject to change without notice.
All values are design or typical values when measured under laboratory conditions.

(Rev 05/10/24)

NX_LightingControls_Brochure_R06