

LITEFRAME[®]

Commercial



Current |  prescolite

The **RIGHT** Downlight

Helping you achieve
the **perfect balance**
of performance,
value, & design.

Delivering what matters

The all new LiteFrame® Commercial family delivers what matters most to serve today's commercial & mid-spec market.

RIGHT Features

Providing performance and capabilities essential for today's commercial applications.

RIGHT Value

Optimized for project success while providing flexibility to scale across the Prescolite portfolio.

RIGHT Now

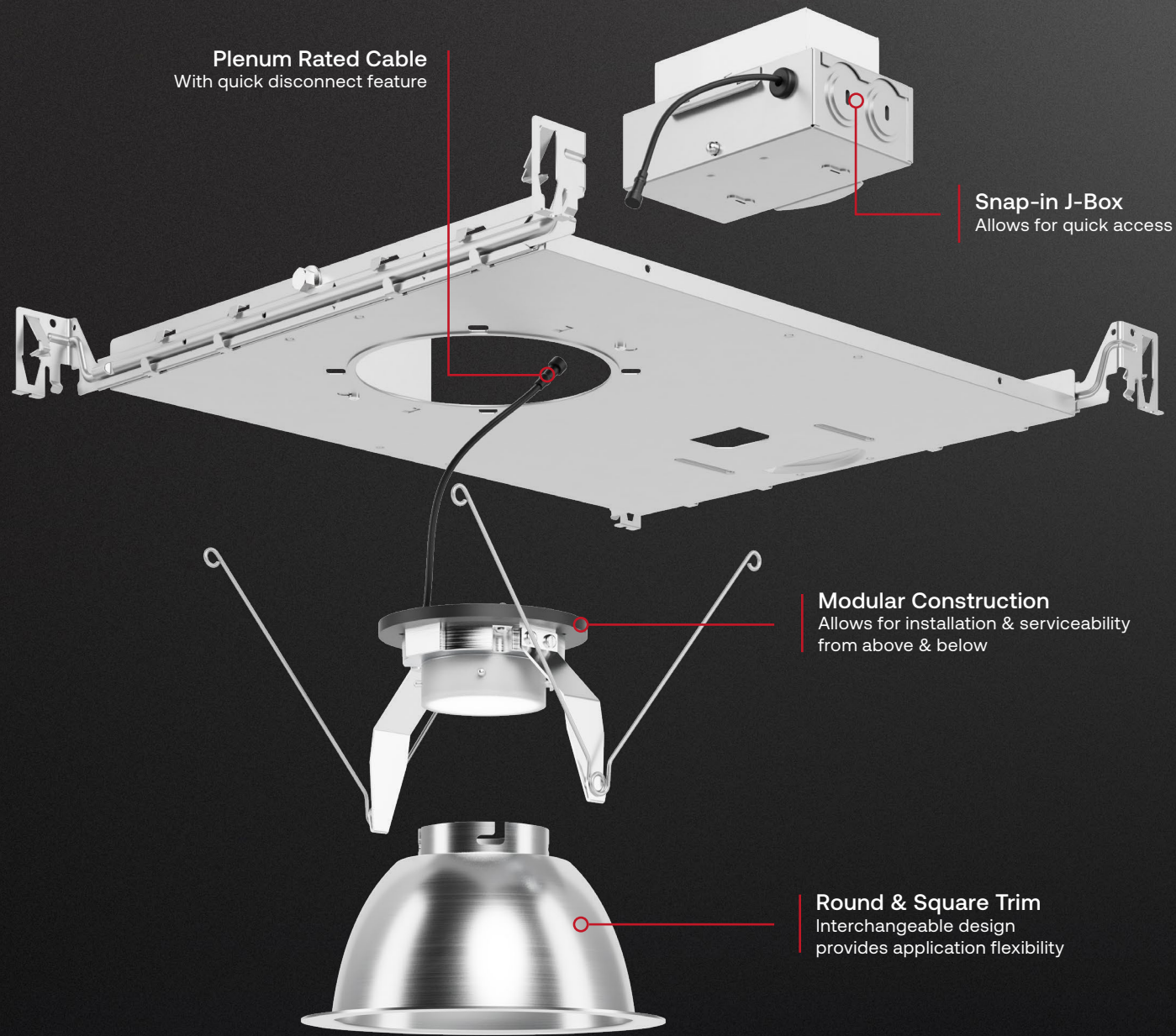
In Stock. Ready to Ship. Further availability supported by Current's QuickShip program.

LITEFRAME®
Commercial



Quick & Flexible Installation

Simple installation & serviceability from **above** or **below** the ceiling plane



Available with 5 Trim Finish Options
Specular, Semi Specular, Softglow (Diffuse), White, and Black

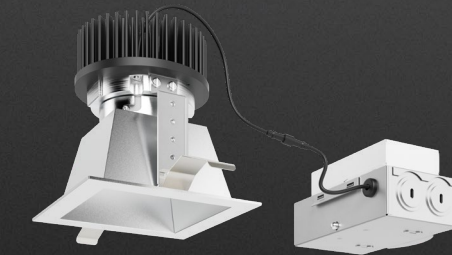
Anodized



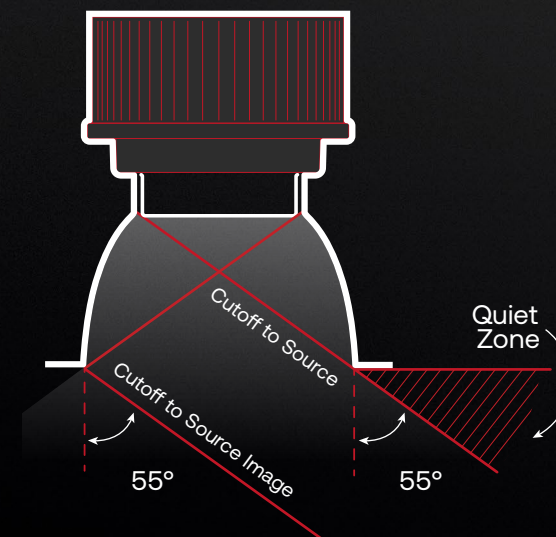
Painted



New Construction & Retrofit Options



Comfortable Visual Cut-off



TriGain[®]
technology

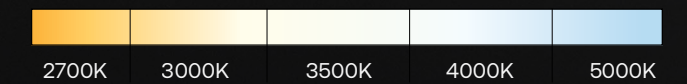
Comes Standard

Uncompromised **vivid color** with industry-leading **performance.**

Superior Performance
High efficacy 90 CRI

Enhanced Color
Delivers R9 50+ for vibrant color quality

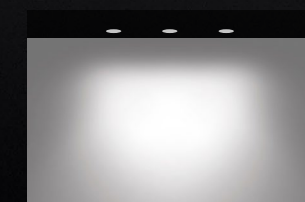
Patented Technology
Narrow-band potassium fluorosilicate phosphor technology improves color rendition



500 to 5000 Lumen Range



Wide Distribution
With 1.0 SC for optimal layout planning in standard ceilings



Wall Wash Options
Deliver uniform, non-scalloped illumination for accenting vertical surfaces.

prescolite



TriGain
technology



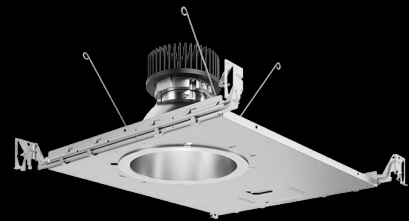
Family Overview

Aperture / Shape	4" Round / Square 6" Round / Square
Function	Downlight Open Wall Wash
Applications	New Construction Remodel
Delivered Lumens (Nominal)	1000 1500 2000 2500 3000 3500 4000 5000
Beam Distributions	Wide 65° (1.0 SC)
Color Temperature	2700K 3000K 3500K 4000K 5000K
Color Rendering	TriGain® 90+ CRI R9 50+
Color Consistency	2-Step MacAdam Ellipse (2 SDCM)
Dimming Protocols	0-10V Triac/ELV DALI DMX Lutron EcoSystem
Controls	NX Lighting Controls Lutron Athena
Input Voltage	120-277V 347V
Emergency Options	Integral (EM) Remote (EMR) Device Transfer Switch
Lens Options (Downlight)	Non-Conductive Shower (IP65)
Reflector Finish / Colors	Specular Semi-Specular Softglow White Painted Black Painted
Flange Options	Standard (matches finish) White Black
Environmental	Wet Location: Standard Downlights Damp Location: Open Wall Wash
Certifications	cCSAus UL1598 IC Rated (IC) Chicago Plenum (CP) UL 924 (EM/EMR) IP65
Projected Life (Tm-21)	L80 > 50,000 hours
Warranty	5-year warranty

See our QuickShip Guide

See our TradeSelect Guide

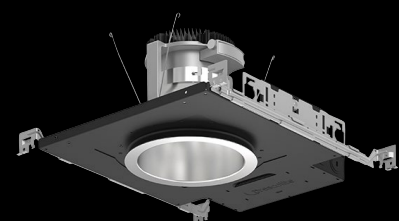
LITEFRAME
Commercial



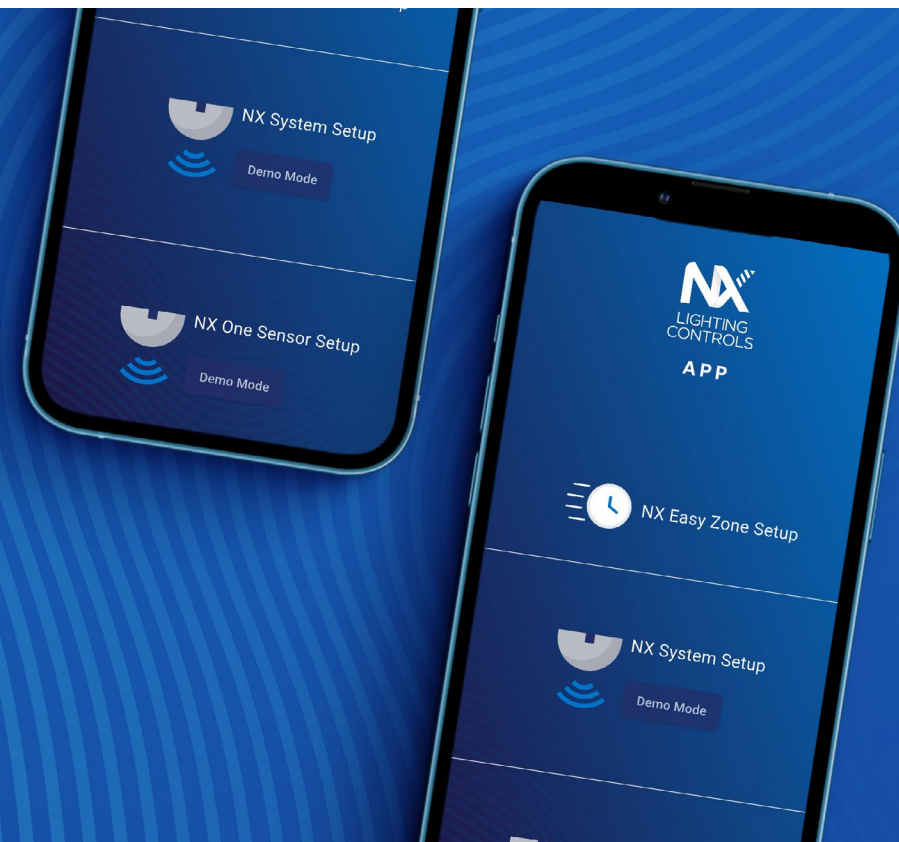
LITEFRAME
2.0



LITEISTRY™



Prescolite is your go-to downlighting portfolio



NX LIGHTING CONTROLS

Available with
Integrated NX
Wired & Wireless
Solutions

Always On.

At Current®, we're inspired by the people who design, craft, live, work & play in spaces. Our award-winning family of brands is dedicated to offering bold integrated solutions, while providing the essential tools for designing connected lighting environments, both indoors and out.

Only Current can provide reliable performance, responsive service, and the uncompromising quality you expect from an industry leader every time, always.

Our Vertical Markets



Commercial

Stores, Offices, Hotels, Supermarkets, Restaurants, Healthcare, Education



Industrial

Manufacturing Centers, Warehouses, Food Processing Plants



Municipal

Roadways, Residential Streets, Shared Spaces



Specialty

Signage, Transportation, Rail, Refrigerated Display Lighting

Our Solutions



LED Lighting

Optimize utilities to end excess energy spending, promote safety and improve aesthetics



Controls, Sensors & IoT Solutions

Improve space utilization and increase productivity, and find actionable insights with IoT



Energy Management Systems

Establish more sustainable energy practices across an enterprise

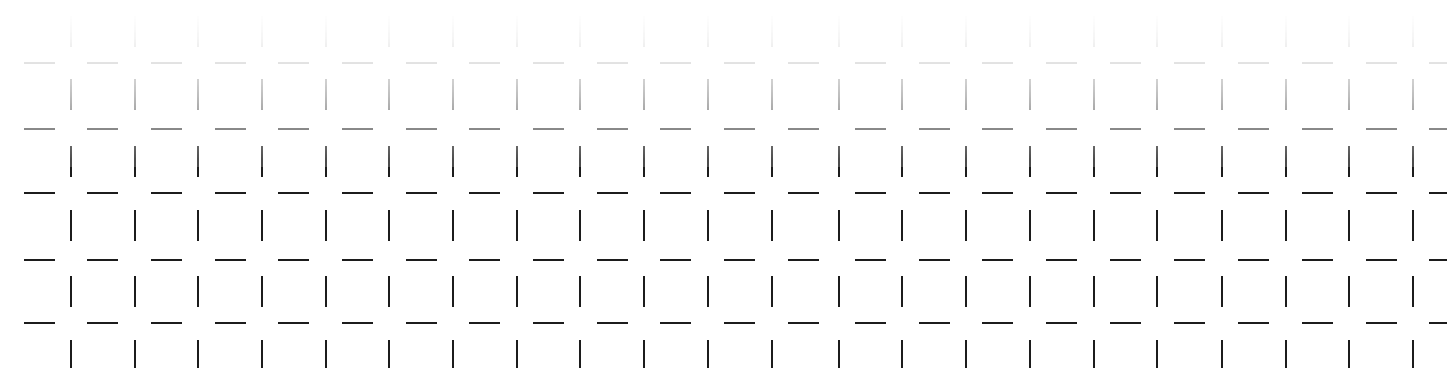
Current

Industry-leading portfolio of innovative product and tech brands.



Current's HLI Brands portfolio of products represents lighting and control's most respected brands, ranging from architectural to complex spaces, outdoor to indoor, life safety, and more.

The HLI Brands portfolio provides customers innovative products with and a proven record of quality and results—a complete package ready to fulfill the needs of any spec.





Current - HLI Brands

701 Millennium Blvd.
Greenville, SC 29607

currentlighting.com/prescolite

© 2026 HLI Solutions, Inc. All rights reserved. Information and specifications subject to change without notice.
All values are design or typical values when measured under laboratory conditions.

(Rev 03/30/2026)

PRE_LFCR_Brochure_Web_R01