

SLING SERIES



Current 

Current lighting Solutions, LLC
701 Millennium Blvd.
Greenville, SC 29607

www.currentlighting.com/EXO

© 2022 HLI Solutions, a division of Current, Inc. All rights reserved. Information and specifications subject to change without notice. All values are design or typical values when measured under laboratory conditions.

Rev October 18, 2022 4:13 PM
Sling_brochure HOL00329



MAXIMUM VERSATILITY

A wide variety of options, controls, mounting configurations, lumen outputs, CCT's and paint finishes gives the Sling tremendous versatility. Options include high voltage (347/480V), comfort lens, photocell, occupancy sensor, SiteSync™ wireless programmable controls and battery backup capabilities. The Sling is capable of inverted or "up" mounting as well as yoke and knuckle flood mounting utilizing accessories. It is available in four lumen outputs and three color temperatures (3000/4000/5000K). Five standard finishes allow this luminaire to match a variety of color schemes and blend into the environment. Whatever your design requirements, Sling is the selection.



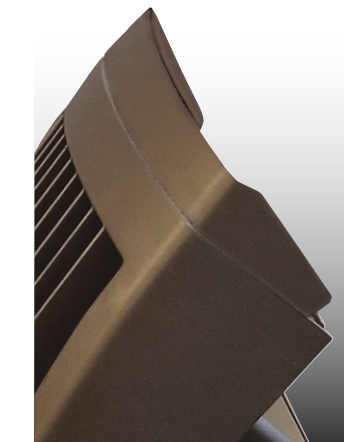
WALL MOUNT



YOKE MOUNT



KNUCKLE MOUNT



VISOR

SUPERIOR DESIGN

The sleek luminaire is available in 2 housing sizes and a variety of outputs. The slender angled shape provides both function and form. The fins maximize heat dissipation keeping the LEDs and other electronics cool while complementing the vertical design. Soft curves are tightly sealed keeping out water and dust featuring an IP65 rating.



OPTIMAL PERFORMANCE

Sling LED wall fixtures offer strong photometric performance that is highly efficient with up to 113 LPW. The LED's are angled to maximize the forward and outward coverage which allows for wider spacing and less fixtures. A comfort lens option is available to provide glare control and "soften" the light if necessary. It is the perfect solution for both low or high mounting applications providing excellent uniformity for accent, security or general flood lighting applications.

EFFORTLESS INSTALLATION

Lightweight design paired with a compact size makes Sling easy to handle. It offers a side swinging hinge freeing up both hands making wire connections simple. The side movement minimizes the chance of damaging lenses or causing injury common with drop down designs. The yoke flood accessories include 3' of SO cord which ensures the installer does not come up short. The simple installation design saves time and labor reducing total costs.



SIDE HINGED

VERSATILE DESIGN & CONTROL

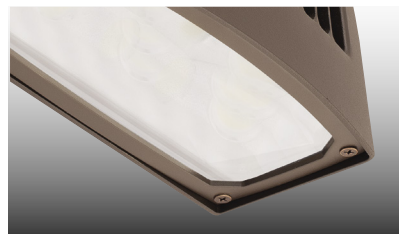
4" junction box with easy install mounting plate

Four 1/2" threaded hubs for surface conduit wiring

Rugged die-cast housing features isolation of LED driver from light engine and heat dissipating vents for maximum LED life and performance



COMFORT LENS



Standard clear lens and optional comfort lens accessory

WIRELESS+SENSORS

Occupancy sensor provides significant energy savings by lowering light levels or only lighting the application area where and when it's needed.

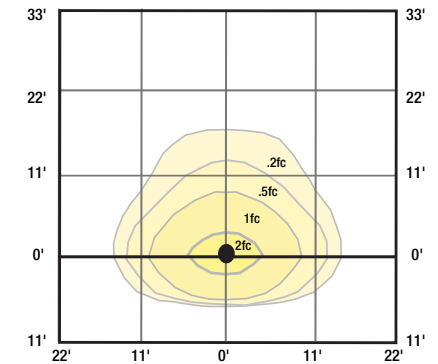


EMERGENCY EGRESS



Battery back up feature with side indicator, (EH) option provides 4:1 spacing, available on SG2 only.

Delivers Life Safety Code average illuminance of 1.0 fc. Assumes open space with no obstructions.



Mounting Height 11ft

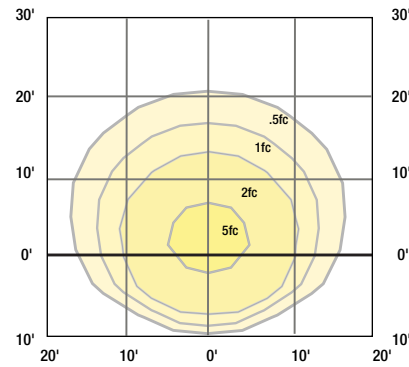
PHOTOCONTROL



Photocontrol option available for energy-saving dusk-to-dawn operation, installs in the top conduit hub.

VERSATILE SIZE & PERFORMANCE

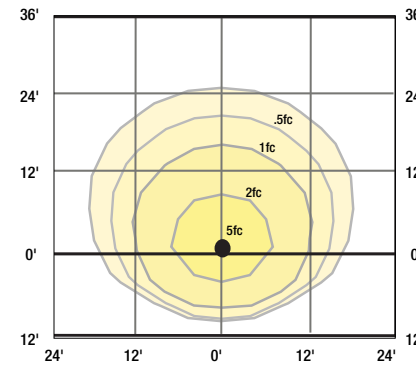
SG1



Mounting Height 10 ft

SG1-20

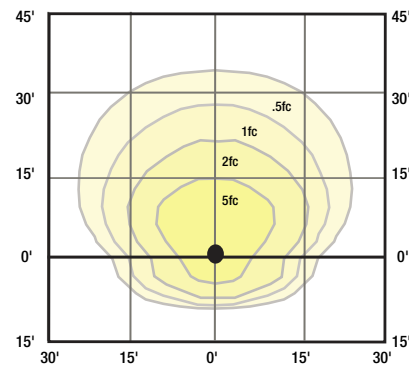
Catalog Number	Equivalency		Distribution	CCT	Voltage	Mounting Height
	MH	HPS				
SG1-20-PCU	100W	100W	IV	5000K	120-277V	8-12ft
SG1-20-4K-PCU	100W	100W		4000K		
SG1-30-PCU	150W	150W		5000K		
SG1-30-4K-PCU	150W	150W		4000K		



Mounting Height 12 ft

SG1-30

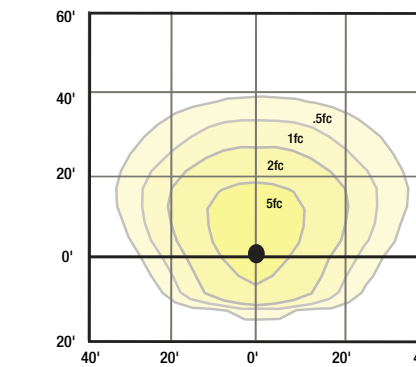
SG2



Mounting Height 15 ft

SG2-50

Catalog Number	Equivalency		Distribution	CCT	Voltage	Mounting Height
	MH	HPS				
SG2-50-PCU	175W	175W	IV	5000K	120-277V	12-18ft
SG2-50-4K-PCU	175W	175W		4000K		
SG2-80-PC-PCU	250W	250W		5000K		
SG2-80-4K-PCU	250W	250W		4000K		



Mounting Height 20 ft

SG2-80

ORDERING

STOCK VERSIONS

Catalog Number	CCT/CRI	Wattage	Mounting Height	Voltage	Color	Lumens	LPW	Weight lbs. (kg)
SG1-20-PCU	5000K/70	21w	8-12ft	120-277V	Dark Bronze	2263	108	4.3 (2)
SG1-20-4K-PCU	4000K/70					2310	110	
SG1-30-PCU	5000K/70	29w	10-15ft			3270	113	
SG1-30-4K-PCU	4000K/70					3060	105	
SG2-50-PCU	5000K/70	51w	12-18ft	120-277V	Dark Bronze	5548	110	11 (5)
SG2-50-4K-PCU	4000K/70					5526	109	
SG2-80-PCU	5000K/70	80w	15-25ft			8061	101	
SG2-80-4K-PCU	4000K/70					8079	101	

CONFIGURABLE

FAMILY	CCT/CRI	DISTRIBUTION	VOLTAGE	COLOR/FINISH	CONTROL OPTIONS	OPTIONS
SG1-10 Size 1, 10w	3K7 3000K, 70 CRI	FT Fwd Throw	UNV 120V-277V	DBT Dark Matte Bronze Textured	PCU Button Photocontrol 120-277V	CS Comfort lens
SG1-20 Size 1, 20w	4K7 4000K, 70 CRI		120 ¹ 120V	BLT Black Matte Textured	SCP ^{1,2,3} Sensor Control, Programmable	E ^{1,2} Battery 0°C
SG1-30 Size 1, 30w	5K7 5000K, 70 CRI		277 ¹ 277V	WHT White Matte Textured	Specify MTG HT for SG & SWPM	EH ^{1,2} Battery w/ heater -20°C
SG1-40 Size 1, 40w			UHV ¹ 347V-480V	GYS Smooth Gray	8F Up to 8'	
SG2-50 Size 2, 50w				PSS Platinum Silver	20F Up to 20'	
SG2-80 Size 2, 80w				CC Custom Color		

¹ Available in SG2 only, UHV available in SG2-50 only
² Sensor controls can not be used with flood accessory kit or for inverted/up mounting.
 120-277V only for SCO/SCP, 120 or 277 only for SWP, SWPM, E & EH
³ Must order minimum of one remote control to program dimming settings, 0-10V fully adjustable dimming with automatic daylight calibration and different time delay settings, 120-277V only

ACCESSORIES

Catalog Number	Description	Weight lbs. (kg)
SG1-CS	Acrylic comfort lens for SG1	1 (.45)
SG2-CS	Acrylic comfort lens for SG2	1 (.45)
SG1-YOKE	SG1 Series Yoke/Floodlight mount kit, includes visor	2.0 (1.0)
SG1-KNUCKLE	SG1 Series Knuckle/Floodlight mount kit, includes visor	2.0 (1.0)
SG2-YOKE	SG2 Series Yoke/Floodlight mount kit, includes visor	2.0 (1.0)
SG2-KNUCKLE	SG2 Series Knuckle/Floodlight mount kit, includes visor	2.0 (1.0)
SCP-REMOTE*	Remote control for SCP option. Order at least one per project to program and control fixtures	1 (.45)

*Must order minimum of one remote control to program dimming settings, 0-10V fully adjustable dimming with automatic daylight calibration and different time delay settings, 120V or 277V only

FINISH OPTIONS



DIMENSIONS

