



architectural
arealighting

Cypher[®]

Current 

Cypher[®]

INFINITELY VARIABLE

Whether lighting a path, accenting a colonnade, or grazing an expansive wall, Cypher allows designers to mix and match optics for best-in-class aesthetics and performance. With IES, wall grazer, spot/column and pencil beam distributions, Cypher is the ultimate wall sconce luminaire.

- Up, down and side lighting optics for up to 360° of illumination
- RGBW or Static white luminous accent options
- Multiple fascia panels, finishes and distribution options
- Integral battery backup, photocell, motion sensing



Three Modular Components

Cypher is made up of three modular components, the CY1 or CY2 base, LED Light Engine with main and secondary distributions, and Fascia, in 7 different standard forms or the unique "Ghost" Fascia.

1. Select base
2. Select LED light engine
3. Select fascia



base housing

Base Housing

Base in Accent or Pedestrian Scale

Cypher is available in small 9" Accent scale, 1,500 or 2,500 nominal lumen packages; or large 14" Pedestrian scale, 2,500, 3,500 or 4,500 nominal lumen packages.



Pedestrian Base Housing

Accent Base Housing

LED engine

DISTRIBUTIONS	
Downlight only	
100% down	
Type 1	
Type 2	
Type 3	
Type 4	
SP	
WG	

DISTRIBUTIONS		
50/50 Down/Up		
50% Down	50% Up	
Type 1	Type 1	
Type 2	Type 2	
Type 3	Type 3	
Type 4	Type 4	
SP	SP	
WG	WG	

DISTRIBUTIONS		
90/10 Down/Up Accent		
90% Down	10% Up	
Type 1	SP	
Type 2	WG	
Type 3	PB	
Type 4		
SP		
WG		

DISTRIBUTIONS				
70/10/10/10 Down/Split Accent				
70% Down	10% Up	10% Left	10% Right	
Type 1	SP	SP	SP	SP
Type 2	WG	WG	WG	WG
Type 3	PB	PB	PB	PB
Type 4				
SP				
WG				

DISTRIBUTIONS				
25/25/25/25 Split				
25% Down	25% Up	25% Left	25% Right	
SP	SP	SP	SP	SP
WG	WG	WG	WG	WG



Light in Any Direction
 Cypher utilizes a patent pending design that allows you to choose how much light you want and where you want it.



- Die-Cast Housing
- LED Assembly
- Optical Cover
- Cast Back Wall
- Optical Lens (Clear or diffused)

A variety of optics from downlight only to 50/50, 90/10, 70/10/10/10 and 25/25/25/25 split distributions are available for a full 360° illumination.

distributions

Distributions

IES Type I Distribution



IES Type II Distribution



IES Type III Distribution



IES Type IV Distribution



Spencil & 15° Spot Distributions



Wall Grazer



fascia

Fascia

A Multitude of Fascia Offerings

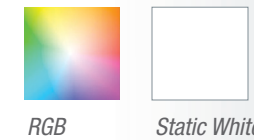
A wide range of fascia panels are available in stainless steel, copper, or custom materials, and dozens of paint finishes to match any architectural style. A luminous front panel fascia option is also available in static white or RGBW as a lighting focal point to draw the eye and add visual interest.

Luminous windows offerings - Fascia 3 & 5 only

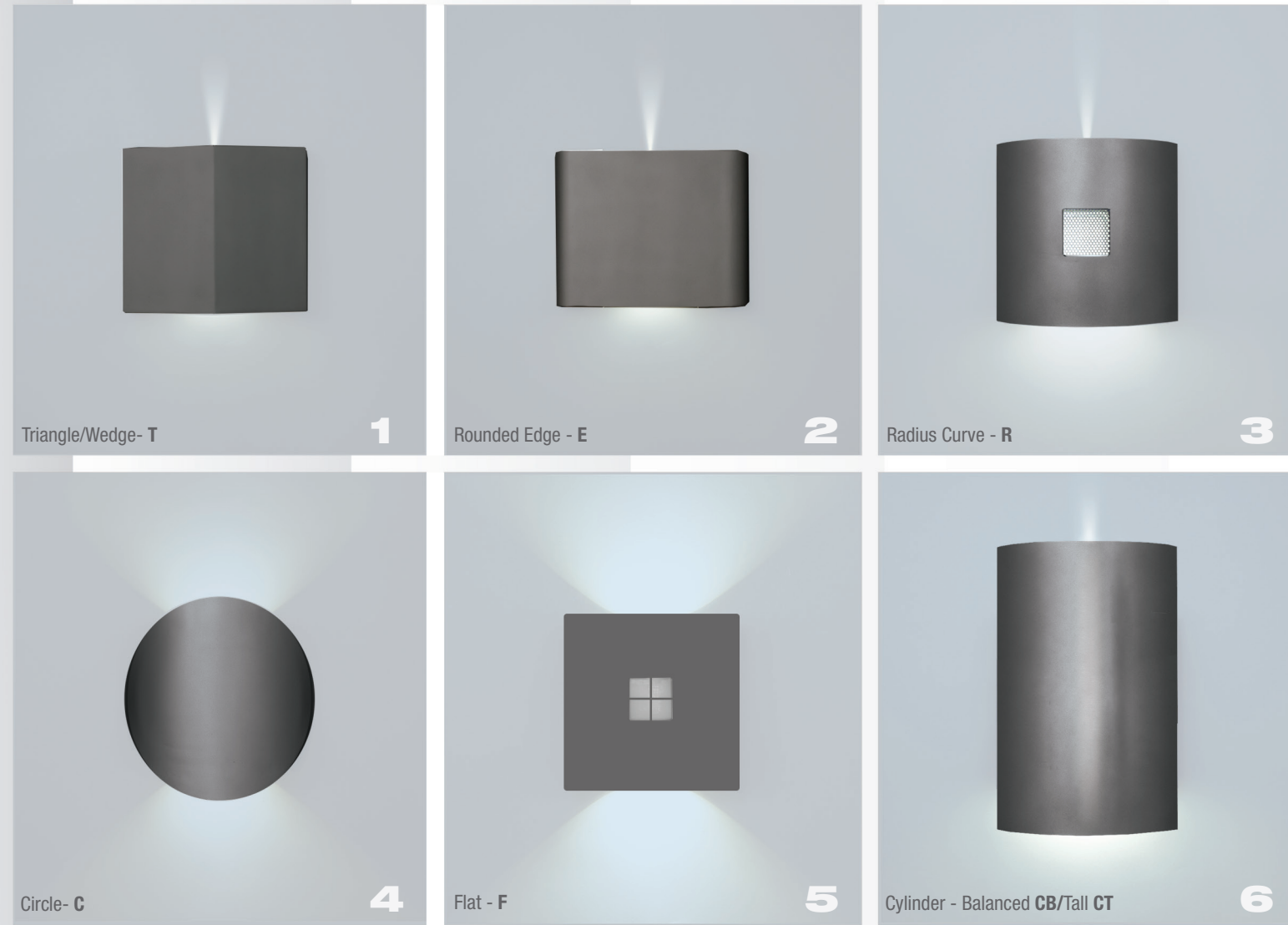


4-Square Open Perforated

Luminous options - Only available in luminous window fascia



RGB Static White



Ghost Fascia

An AAL industry first, the “Ghost” Fascia option allows Cypher to blend seamlessly into the building architecture. Custom building material is applied to front (CBM1), 2-sides and front (CBM2) or 2-sides, top and front (CBM3) to match finish of architectural background.

Custom materials are installed in the field by others.

Ghost

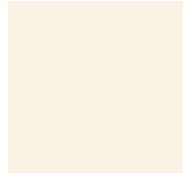


finishes

Finishes

Available in 15 AAL standard colors, stainless steel, copper, and custom colors & materials

Standard Colors



WH (Arctic White)



LG (Light Grey)



MAL (Matte Aluminum)



MG (Medium Grey)



AGN (Antique Green)



VBU (Verde Blue)



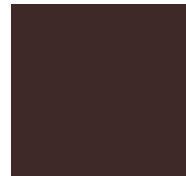
WDB (Weathered Bronze)



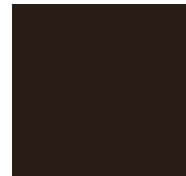
DGN (Dark Green)



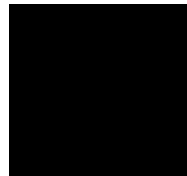
CRT (Corten)



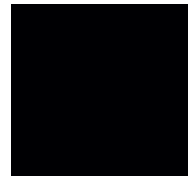
MDB (Metallic Bronze)



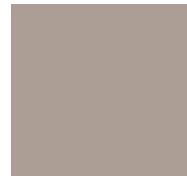
DB (Dark Bronze)



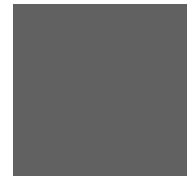
BL (Black)



BLT (Matte Black)



TT (Titanium)



GT (Graphite)

Premium Colors



SHK (Shamrock)



SPP (Salt and Pepper)



SFM (Seafoam)

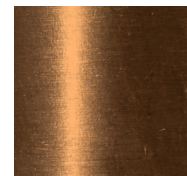


WCP (Weathered Copper)

Optional Finishes



STS (Stainless Steel)



COP (Copper)



Matching color

With 15 standard AAL colors and the ability to match any RAL color, Cypher wall sconces can be ordered to match your favorite palette.

controls

Controls

Integrated Lighting Control

Since 1896, when Harvey invented the world's very first lighting control device, the pull-chain switch, Current Lighting has been at the forefront of lighting control innovation.

Controls range from dust-to-dawn photocell to advanced wired or wireless solutions. Our advanced distributed intelligent lighting controls provide a complete suite of California Title 24/ASHRAE compliant energy saving solutions.



Control Options

WIR	wiSCAPE
WIRSC	wiSCAPE w/SCP

SCP	Programmable Occupancy Sensor
-----	-------------------------------

PC12	120V Button Photocell
PC20	208V Button Photocell
PC24	140V Button Photocell
PC27	277V Button Photocell

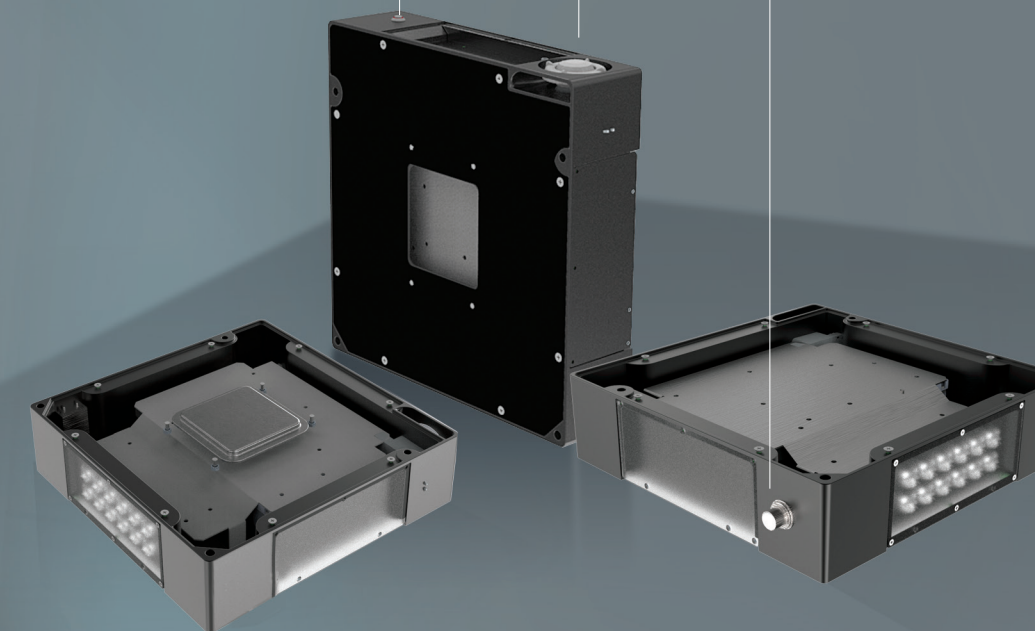
SCP, wiSCAPE for CY2 only

9" Housing

- Button Photocell
- Battery Backup
- Fusing (Voltage Specific)
- California Title 24 compliant

14" Housing

- Button Photocell
- Programmable Occupancy Sensor
- On/Off Occupancy Sensor
- Profile Dimming
- Profile Dimming w/ Occupancy Sensor
- Battery Backup Unit (0°C)
- Battery Backup Unit (-20°C min.)
- Fusing (Voltage Specific)
- California Title 24 compliant



Ordering Information

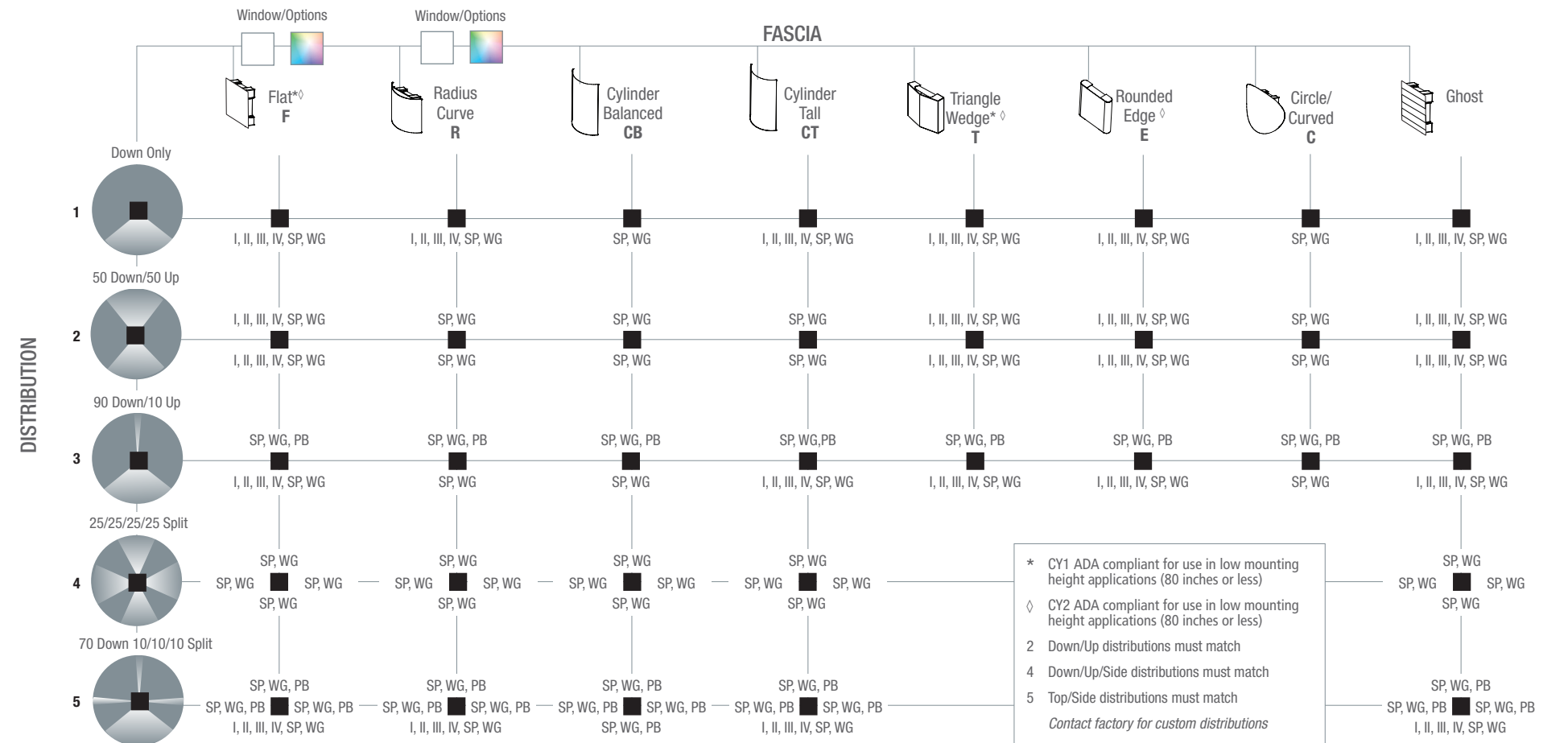
SERIES-OUTPUT	CCT-CRI	MODEL	MAIN DISTRIBUTION (Down)	SECONDARY DISTRIBUTION (Up, Sides)	VOLTAGE	BASE HOUSING FINISH
CY1-15 15w, 1500 nominal lumens	3K7 3000K, 70CRI 3K8 3000K, 80CRI	1 DownLight Only 2 50/50 Down/Up 3 90/10 Down/Up	1 IES Type I 2 IES Type II 3 IES Type III 4 IES Type IV	1 IES Type I 2 IES Type II 3 IES Type III 4 IES Type IV	UNV 120-277V 347 347V 480 480V <i>347, 480V for CY2 only</i>	Standard Colors AGN Antique Green BL Black BLT Matte Black CRT Corten DB Dark Bronze DGN Dark Green GT Graphite LG Light Grey MAL Matte Aluminum MDB Metallic Bronze MG Medium Grey TT Titanium VBU Verde Blue WDB Weathered Bronze WH Arctic White Premium Colors SFM Seafoam SHK Shamrock SPP Salt and Pepper WCP Weathered Copper RAL Provide a RAL 4 digit color number CUSTOM COLOR Please provide color chip for matching
CY1-25 25w, 2500 nominal lumens	4K7 4000K, 70CRI 4K8 4000K, 80CRI	4 25/25/25/25 Split 5 70/10/10/10 Split	SP 15° Spot/Column WG 60° Wall Graze 1D Type I Diffused 2D Type II Diffused 3D Type III Diffused	SP 15° spot/column WG 60° wall graze PB* Pencil Beam 1D Type I Diffused 2D Type II Diffused 3D Type III Diffused 4D Type IV Diffused		
CY2-25 25w, 2500 nominal lumens	5K7 5000K, 70CRI					
CY2-35 40w, 3500 nominal lumens						
CY2-45 50w, 4500 nominal lumens						

PB distribution is available for 90/10 and 70/10/10/10 models only. Not all combinations are available. See Distribution Matrix on page 2 for restrictions.

FASCIA FORM	LUMINOUS FRONT	FASCIA PANEL	CONTROL OPTIONS	OPTIONS
F Flat R Radius/Curved T Triangle/Wedge E Rounded Edge C Circle/Curved CB Cylinder Balanced CT Cylinder Tall CBM Custom Building Material Mount Ghost Fascia	BLANK Standard None RGBW RGBW Luminous Front LFSW Luminous Front Static White <i>RGBW and LFSW luminous fronts are only available with open, four square and perforated fascia panels</i>	FPP Full Panel Painted FPS Full Panel Stainless Steel FPC Full Panel Cooper OPP Open Painted Panel OPS Open Panel Stainless Steel OPC Open Panel Cooper 4PP 4-Square Panel Painted 4PS 4-Square Panel Stainless Steel 4PC 4-Square Panel Cooper PPP Perforated Panel Painted PPS Perforated Panel Stainless Steel PPC Perforated Panel Cooper	PCU Universal Button Photocell (120-277V) SCP Programmable Occupancy Sensor WIR wiSCAPE WIRSC wiSCAPE w/Occupancy Sensor <i>SCP, SiteSync, wiSCAPE for CY2 only</i>	EM Battery Backup Unit -20°C SF Single Fuse (120,277, 347) DF Double Fuse (208, 240, 480)

Flat and Radius Fascia forms only. Painted panels by default match base housing finish/color. Consult factory for custom panel finishes.

Distribution Matrix







Current @

Current Lighting Solutions, LLC

701 Millennium Blvd.
Greenville, SC 29607

currentlighting.com/architecturalarealighting

© 2022 HLI Solutions, Inc. All rights reserved. Information and specifications subject to change without notice. All values are design or typical values when measured under laboratory conditions.

Rev 06/23/22

aal_cy_lit_R02