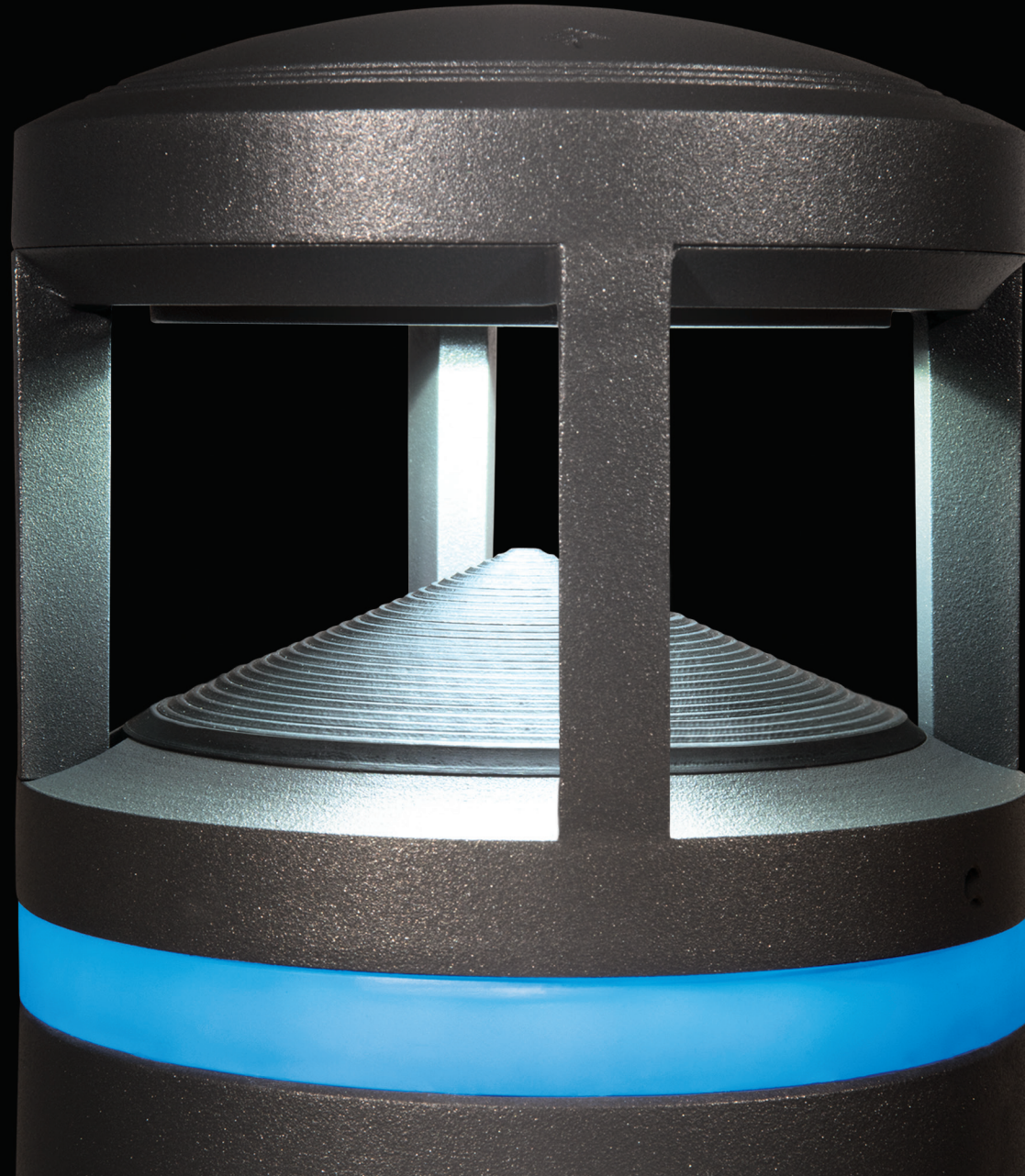


# Pavilion



**KIM**LIGHTING

Current 



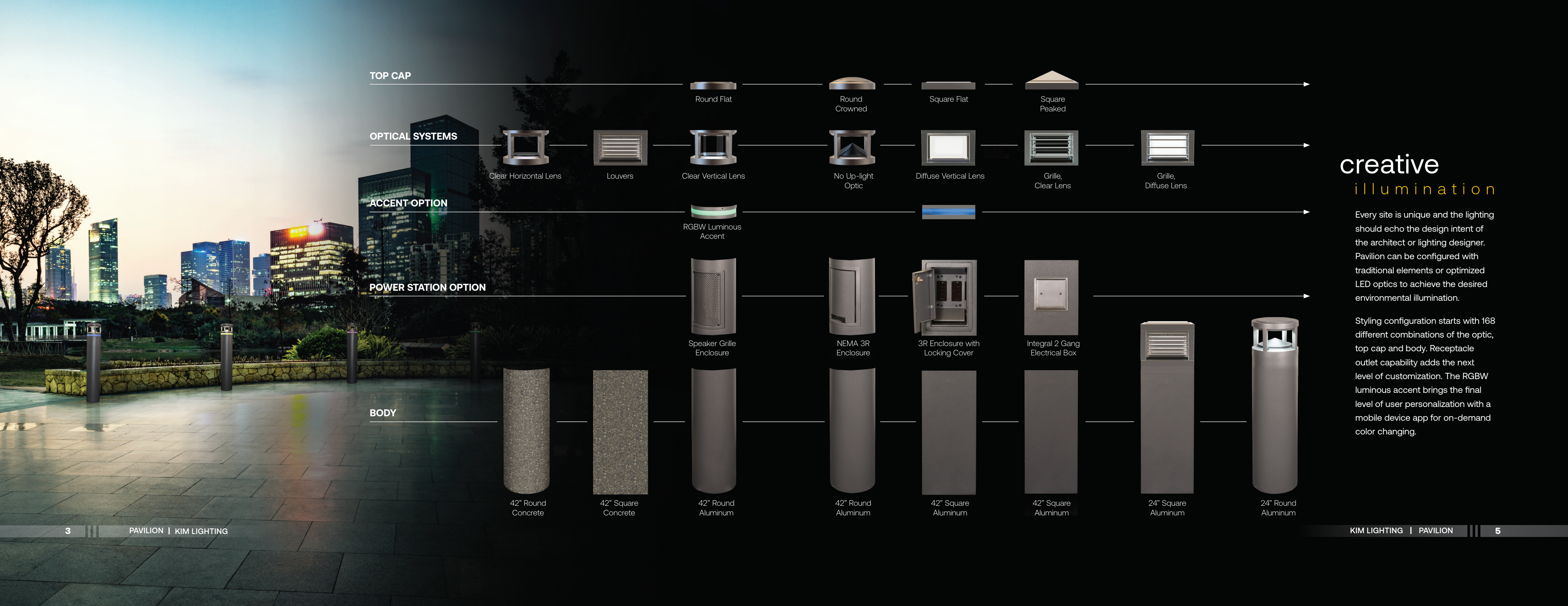
## beyond illumination

Kim lighting redefines the bollard by integrating the functionality of a NEMA rated Power Station. The Pavilion bollard can be tailored for any illumination requirement whether it be Dark Sky compliant, IES distributions or traditional low brightness optics. The body of the Pavilion bollard goes one step further than the hosting of receptacles and is fully compatible with any 1 or 2 gang device. A Bluetooth® enabled RGBW luminous accent adds wayfinding capability. Rotational adjustment enables the square form factor to be installer friendly on winding landscape pathways.

A complete suite of sensors, controls, battery backup and audio system capability raises the bar on intelligent illumination.

Pavilion ARCHITECTURAL  
ILLUMINATION  
INTEGRATION





TOP CAP



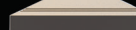
Round Flat



Round Crowned

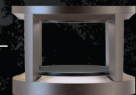


Square Flat



Square Peaked

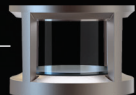
OPTICAL SYSTEMS



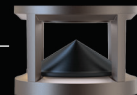
Clear Horizontal Lens



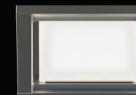
Louvers



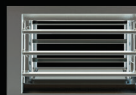
Clear Vertical Lens



No Up-light Optic



Diffuse Vertical Lens

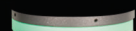


Grille, Clear Lens

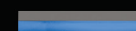


Grille, Diffuse Lens

ACCENT OPTION



RGBW Luminous Accent



POWER STATION OPTION



Speaker Grille Enclosure



NEMA 3R Enclosure



3R Enclosure with Locking Cover



Integral 2 Gang Electrical Box

BODY



42" Round Concrete



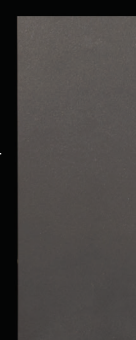
42" Square Concrete



42" Round Aluminum



42" Round Aluminum



42" Square Aluminum



42" Square Aluminum



24" Square Aluminum



24" Round Aluminum

creative illumination

Every site is unique and the lighting should echo the design intent of the architect or lighting designer. Pavilion can be configured with traditional elements or optimized LED optics to achieve the desired environmental illumination.

Styling configuration starts with 168 different combinations of the optic, top cap and body. Receptacle outlet capability adds the next level of customization. The RGBW luminous accent brings the final level of user personalization with a mobile device app for on-demand color changing.



# discrete illumination





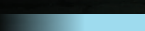
Whether it be the timeless louver, diffused glow or open body, Pavilion can be configured for a wide range of applications.

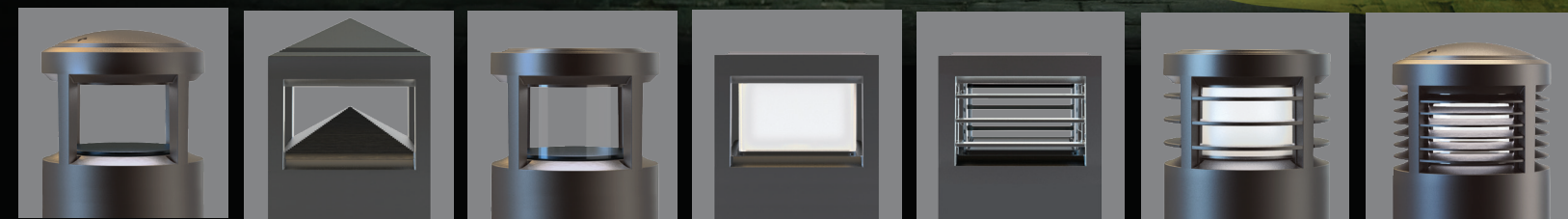
Pavilion delivers IES distribution types with no glare at normal viewing angles.

The Clear Horizontal Lens, No Up-light and Clear Vertical Lens configurations are optimized for LED technology and deliver class-leading efficacy.

For architecture demanding more conventional styling, Pavilion can be configured with louvers, grilles or choice of a clear or a diffused vertical lenses for increased vertical illumination.

## Distribution Options

-  Type I
-  Type II
-  Type III
-  Type IV
-  Type V



Clear Horizontal Lens

No Up-light Optic

Clear Vertical Lens

Diffuse Vertical Lens

Grille with Clear Lens

Grille with Diffuse Lens

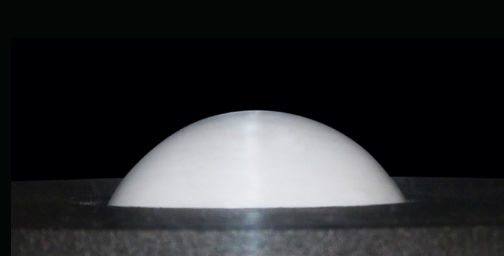
Louvers



## integrated illumination

### Motion:

Pavilion's discrete sensor option intelligently detects occupancy for enhanced security, energy savings, and code compliance. Sensor operation reduces power by dimming light levels to 50%. When motion is detected the light level returns to full brightness.



### Bluetooth®

Pavilion is the industry's first bollard to incorporate RGBW color changing with Bluetooth connectivity. The RGBW luminous accent option is controlled wirelessly via Current Lighting's Bluetooth® mobile app to dim or change color with Apple and Android devices.



## durable illumination

All housing components are constructed with die-cast, low copper alloy (<0.6%) aluminum for superior durability. One piece silicone gasketing achieves an IP66 rated optical compartment and assures optical integrity. The finest stainless steel hardware is used to secure all components within the housing, providing durability in extreme weather conditions.

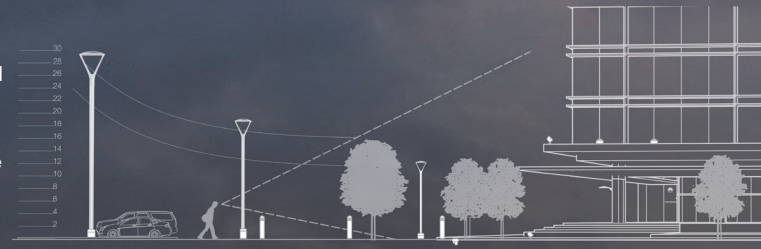




# theory of relativity

## Scaled to the environment

The Kim Lighting Theory of Relativity promotes harmony between outdoor lighting and architecture through a seamless blending of the two. Comprehensive product families allow specifiers to carry a continuous aesthetic through the project regardless of the application. As distance to structures decreases, luminaire height and scale decrease accordingly, maintaining visual comfort and contextual balance. This maximizes efficiency while preserving and enhancing the architectural experience.



Arm Mount 30 ft

Arm Mount 24 ft

Post top 12 ft

Wall Mount 9ft

Bollard 4ft

In-Grade



# integrated illumination

The Pavilion's RGBW color changing luminous accent option enables simple and intuitive wayfinding capability to enhance the environment.





## architectural illumination

The industrial designers at KIM Lighting have paid painstaking attention to detail in the resolution and refinement of every proportion, parting line and the overall feel of Pavilion. Whether it be a minimalist contemporary or a more general commercial environment, the optics, top cap and body can be configured to harmoniously integrate into any architectural theme. Unique to Pavilion is a rotational adjustment to both the round and square form factors to bring a welcome degree of forgiveness on poured bolt tolerances during installation.



### Day Time Night Time

Pavilion brings a timeless beauty and elegance to any environment. At KIM Lighting, we believe that architecture is experienced differently throughout the day and night, so we designed Pavilion to be the perfect balance of form and function.



# empowered illumination

KIM Lighting blurs the lines of bollard and power station functionality. The configurable body of Pavilion is capable of hosting a multitude of receptacles, switches and devices. An integral outlet box can host any single or double gang device making it ideal for keypad, proximity card readers or actuator buttons at building entrances. The tamper resistant NEMA 3R rated enclosure is ideal for applications needing GFCI or powered USB connectivity. In addition to electrical devices, Pavilion can also host a 3" speaker for PA system capability. An emergency battery backup is available for all configurations to complete the package for a total lighting solution.





# ordering information



MODEL	TOP	OPTICS	DISTRIBUTION	LIGHT ENGINE	BODY	FINISH	VOLTAGE	OPTIONS
<b>PA7R</b> Pavilion Round	<b>FT</b> Flat Top	<b>CH</b> Clear Horizontal Lens	<b>1</b> Type I	<b>12L-010-AMB</b> 14W, Amber 590nm Monochromatic	<b>24A</b> 24" OAH, Aluminum	<b>BL</b> Black	<b>UNV</b> †20-277V	<b>EM</b> <sup>7</sup> Battery Backup (-20°C)
<b>PA7S</b> Pavilion Square	<b>PT</b> <sup>1</sup> Peaked Top (PA7S only)	<b>CL</b> <sup>2</sup> Clear Vertical Lens	<b>2</b> Type II	<b>12L-010-3K7</b> 14W (1000 lm 3000K), 70 CRI	<b>42A</b> 42" Aluminum Solid Body	<b>DB</b> Dark Bronze	<b>120</b> <sup>6</sup> 120V	<b>LR</b> <sup>8</sup> Luminous Accent
	<b>CT</b> <sup>1</sup> Crowned Top (PA7R only)	<b>DL</b> <sup>2,3</sup> Diffuse Vertical Lens	<b>3</b> Type III	<b>12L-010-4K7</b> 14W (1000 lm 4000K), 70 CRI	<b>42BR-C</b> 42" OAH., Brown Concrete	<b>GT</b> Graphite	<b>277</b> <sup>6</sup> 208-277V	<b>SF</b> <sup>9</sup> Single Fuse
		<b>GC</b> Grille with Clear Lens	<b>3HS</b> Type III + House Side Shield	<b>12L-010-5K7</b> 14W (1000 lm 5000K), 70 CRI	<b>42NG-C</b> 42" OAH., Natural Gray Concrete	<b>LG</b> Light Gray	<b>347</b> <sup>6</sup> 347V	<b>DF</b> <sup>9</sup> Double Fuse
		<b>GD</b> <sup>3</sup> Grille with Diffuse Lens	<b>4</b> Type IV	<b>12L-020-AMB</b> 22W, Amber 590nm Monochromatic	<b>42A/ROP</b> <sup>4</sup> 42" OAH., Aluminum + Dual Receptacle Outlet Panel and Cover	<b>PS</b> Platinum Silver	<b>480</b> <sup>6</sup> 480V	
		<b>LV</b> Louvers	<b>5</b> Type V	<b>12L-020-3K7</b> 22W (2000 lm 3000K), 70 CRI	<b>42A/ROP-L</b> <sup>4</sup> 42" OAH., Aluminum + Dual Receptacle Outlet Panel and Locking Cover	<b>TT</b> Titanium		
		<b>NU</b> No Up-light		<b>12L-020-4K7</b> 22W (2000 lm 4000K), 70 CRI	<b>42A/2GEB</b> 42" OAH Aluminum + Integral Recessed 2-Gang Electrical Box	<b>WH</b> White		
				<b>12L-020-5K7</b> 22W (2000 lm 5000K), 70 CRI	<b>42A/SG3</b> 42" OAH Aluminum + Speaker Grille Enclosure for 3" Ø speaker	<b>RAL</b> RAL Color		
						<b>CC</b> Custom Color		

†PRECOMMISSIONED SITESYNC™ ORDERING INFORMATION:  
When ordering a fixture with the SiteSync lighting control option, additional information will be required to complete the order. The SiteSync Commissioning Form or alternate schedule information must be completed. This form includes Project location, Group information, and Operating schedules. For more detailed information please visit [www.HubbellLighting.com/products/sitesync](http://www.HubbellLighting.com/products/sitesync) or contact Hubbell Lighting tech support at (800) 345-4928.

Examples:  
PA7R/FT/NU3/12L-020-3K7/42A/TT/SWP/UNV/LR

Microsoft, Encarta, MSN, and Windows are either registered trademarks or trademarks of Microsoft Corporation in the United States and/





**Current Lighting Solutions, LLC**

701 Millennium Blvd.  
Greenville, SC 29607

[currentlighting.com/kimlighting](https://www.currentlighting.com/kimlighting)

© 2022 HLI Solutions, Inc. All rights reserved. Information and specifications subject to change without notice.  
All values are design or typical values when measured under laboratory conditions.

Rev 09/23/24

ki\_pavilion\_lit\_R04

---