

AFL10 LED

Architectural
Floodlight



KIM LIGHTING

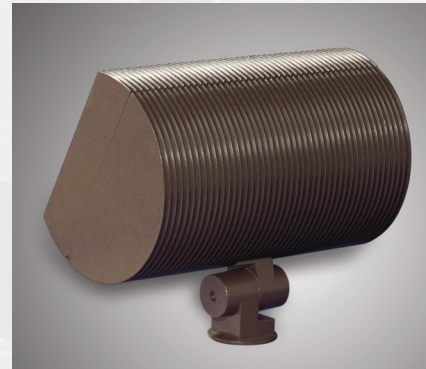
Current 

AFL10 LED Architectural Floodlight

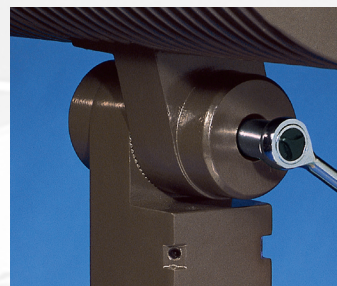
With a timeless architectural form factor and a 30 year reputation for unprecedented quality and performance, the AFL10 has now been upgraded to LED.

Features and Benefits:

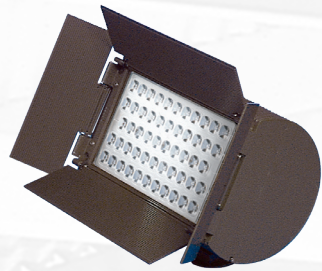
- 20 to 40% increase in lumen output over HID version
- 34 to 152% increase in max candela over HID
- Over 30% improvement in uniformity
- Easy to install LED retrofit kits available
- Unique swivel mount provides superior aiming without loosening over time
- Die cast aluminum housing with powder coat finish for excellent value and rugged service
- Wide Flood, Vertical Flood, and Narrow Flood Distributions
- IP66 certified
- Sleek looking, one of a kind optics complement the AFL's premium architectural design elements and securely attach to internal heat sink for maximum thermal dissipation
- Multitude of mounting options
- Energy savings up to 54%



Ribs at back of luminaire dissipate heat and keep the the fixture cool



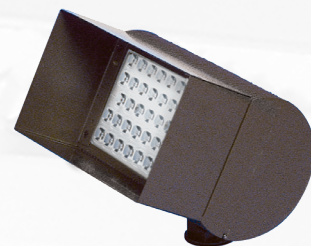
Both the standard swivel and Heavy Duty Swivel (HDS) option shown here are easily adjustable



Barn Doors (BD)



Fixed Hood (FH)



Full Shield (FS)

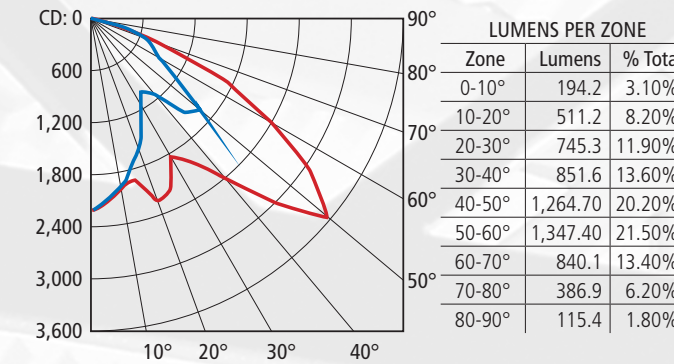


Color Filter Assembly (CFA)
5 different lens filter colors available. See ordering code on back page

Wide Flood Polar Candela Distribution

3,000K, 350mA – 62W

AFL10-LED-WF-54L3K35 ■ = 0°H ■ = 90°H



ILLUMINANCE AT A DISTANCE

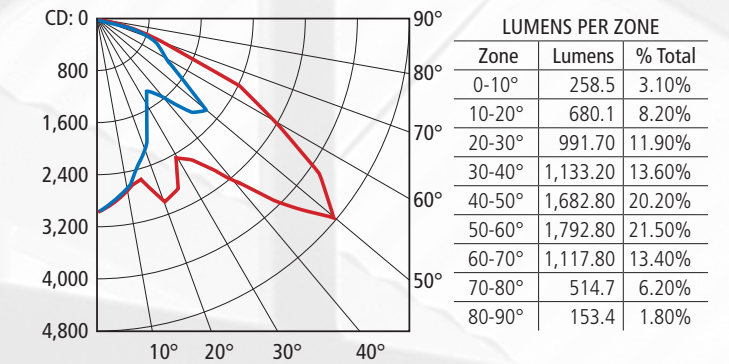
	Center Beam fc	Beam Width	
2.0 ft	551 fc	2.0 ft	8.9 ft
4.0 ft	138 fc	3.9 ft	17.9 ft
6.0 ft	61.5 fc	5.9 ft	26.8 ft
8.0 ft	34.4 fc	7.9 ft	35.7 ft
10.0 ft	22.0 fc	9.8 ft	44.6 ft
12.0 ft	15.3 fc	11.8 ft	53.6 ft

■ = Vert. Spread: 52.4°
■ = Horiz. Spread: 131.7°

47 ft = 1 fc maximum distance

3,000K, 500mA – 88W

AFL10-LED-WF-54L3K50 ■ = 0°H ■ = 90°H



ILLUMINANCE AT A DISTANCE

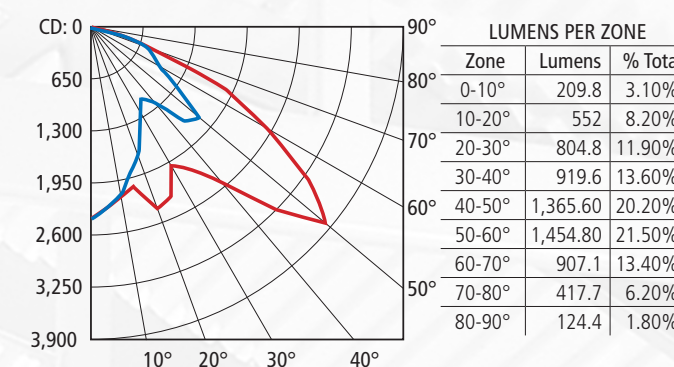
	Center Beam fc	Beam Width	
2.0 ft	733 fc	2.0 ft	8.9 ft
4.0 ft	183 fc	3.9 ft	17.9 ft
6.0 ft	81.4 fc	5.9 ft	26.8 ft
8.0 ft	45.8 fc	7.9 ft	35.7 ft
10.0 ft	29.3 fc	9.8 ft	44.6 ft
12.0 ft	20.4 fc	11.8 ft	53.6 ft

■ = Vert. Spread: 52.4°
■ = Horiz. Spread: 131.7°

54 ft = 1 fc maximum distance

4,000K, 350mA – 62W

AFL10-LED-WF-54L4K35 ■ = 0°H ■ = 90°H



ILLUMINANCE AT A DISTANCE

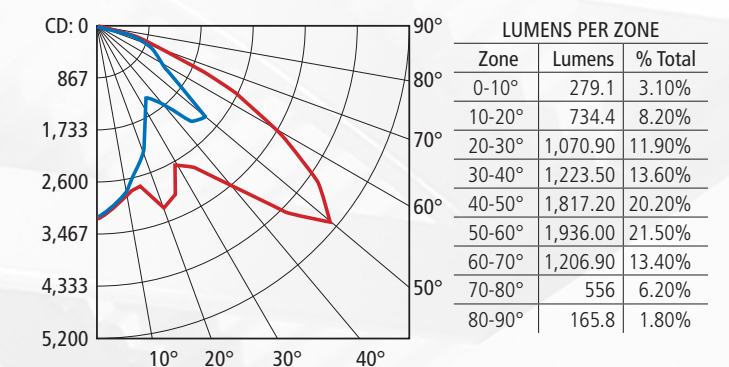
	Center Beam fc	Beam Width	
2.0 ft	595 fc	2.0 ft	8.9 ft
4.0 ft	149 fc	3.9 ft	17.9 ft
6.0 ft	66.1 fc	5.9 ft	26.8 ft
8.0 ft	37.2 fc	7.9 ft	35.7 ft
10.0 ft	23.8 fc	9.8 ft	44.6 ft
12.0 ft	16.5 fc	11.8 ft	53.6 ft

■ = Vert. Spread: 52.4°
■ = Horiz. Spread: 131.7°

48 ft = 1 fc maximum distance

4,000K, 500mA – 88W

AFL10-LED-WF-54L4K50 ■ = 0°H ■ = 90°H



ILLUMINANCE AT A DISTANCE

	Center Beam fc	Beam Width	
2.0 ft	792 fc	2.0 ft	8.9 ft
4.0 ft	198 fc	3.9 ft	17.9 ft
6.0 ft	88.0 fc	5.9 ft	26.8 ft
8.0 ft	49.5 fc	7.9 ft	35.7 ft
10.0 ft	31.7 fc	9.8 ft	44.6 ft
12.0 ft	22.0 fc	11.8 ft	53.6 ft

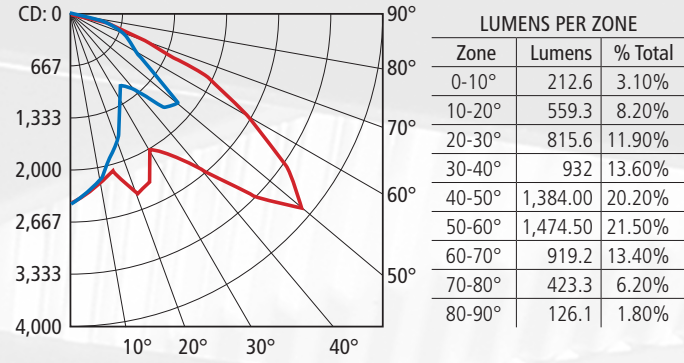
■ = Vert. Spread: 52.4°
■ = Horiz. Spread: 131.7.4°

56 ft = 1 fc maximum distance

Wide Flood Polar Candela Distribution (cont.)

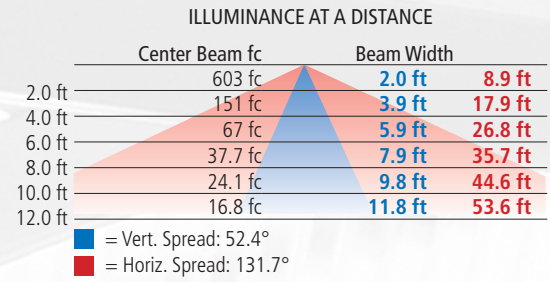
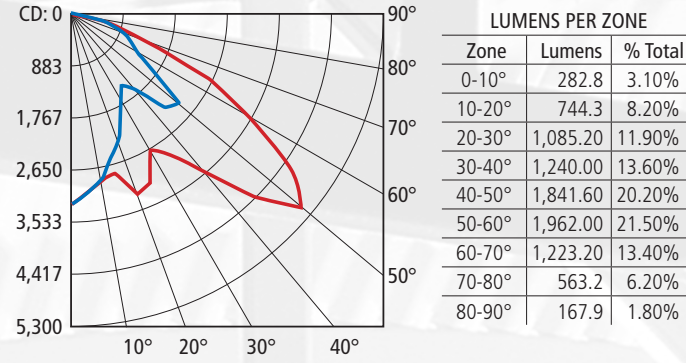
5,000K, 350mA – 62W

AFL10-LED-WF-54L5K35 ■ = 0°H ■ = 90°H

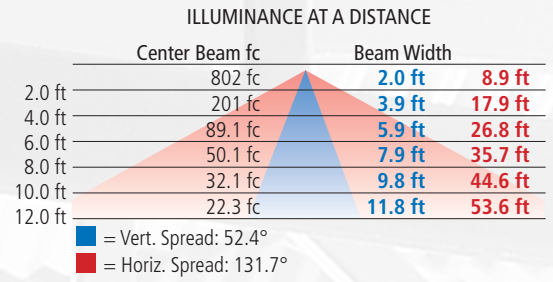


5,000K, 500mA – 88W

AFL10-LED-WF-54L5K50 ■ = 0°H ■ = 90°H



49 ft = 1 fc maximum distance

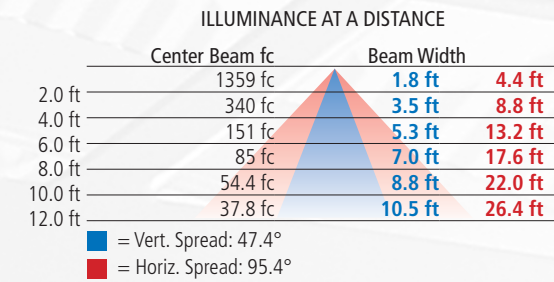
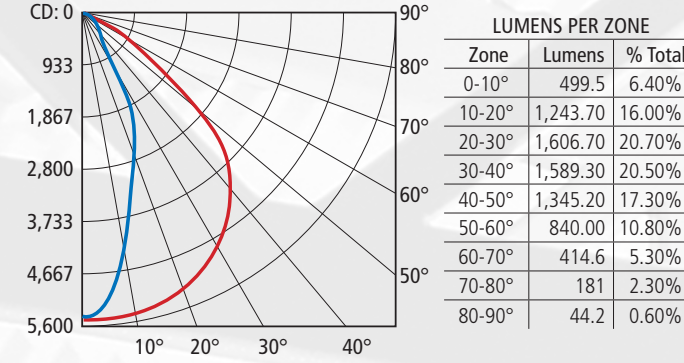


57 ft = 1 fc maximum distance

Vertical Flood Polar Candela Distribution (cont.)

4,000K, 350mA – 62W

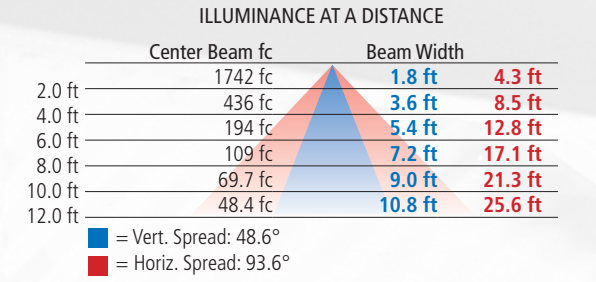
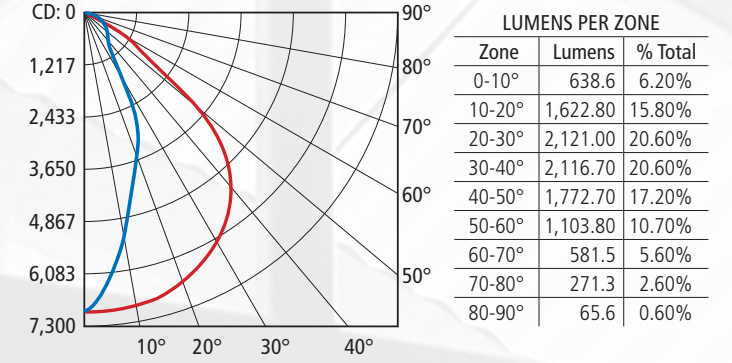
AFL10-LED-VF-54L4K35 ■ = 0°H ■ = 90°H



74 ft = 1 fc maximum distance

4,000K, 500mA – 88W

AFL10-LED-VF-54L4K50 ■ = 0°H ■ = 90°H

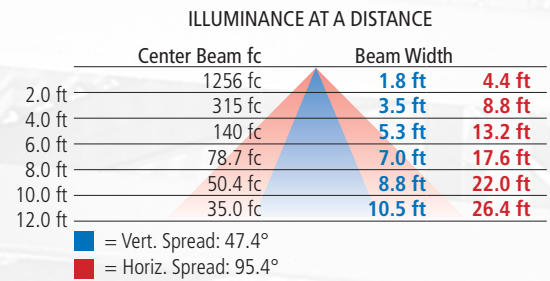
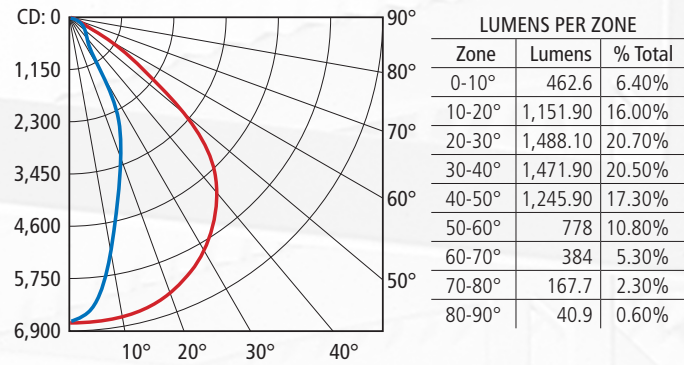


84 ft = 1 fc maximum distance

Vertical Flood Polar Candela Distribution

3,000K, 350mA – 62W

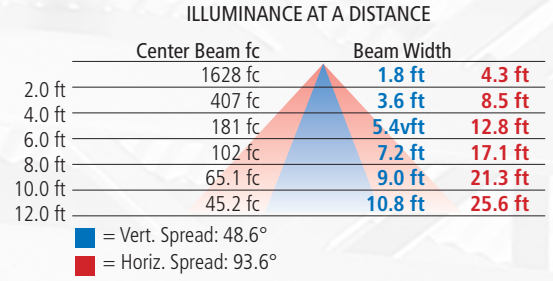
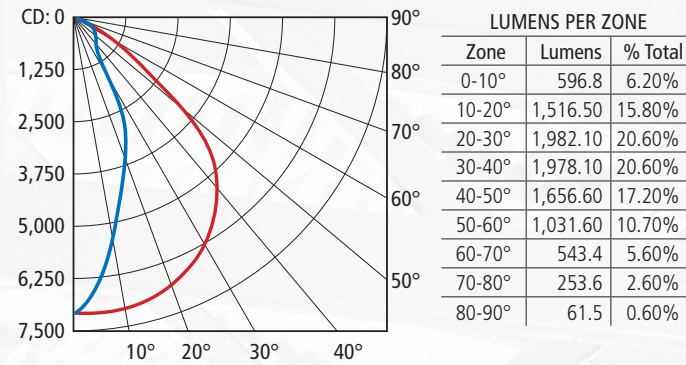
AFL10-LED-VF-54L3K35 ■ = 0°H ■ = 90°H



71 ft = 1 fc maximum distance

3,000K, 500mA – 88W

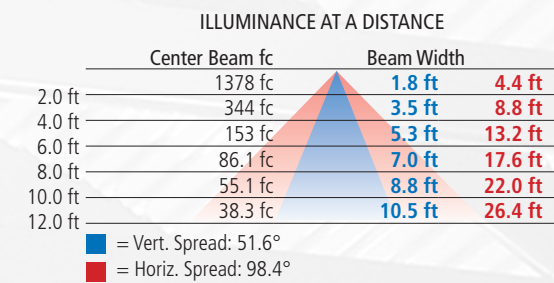
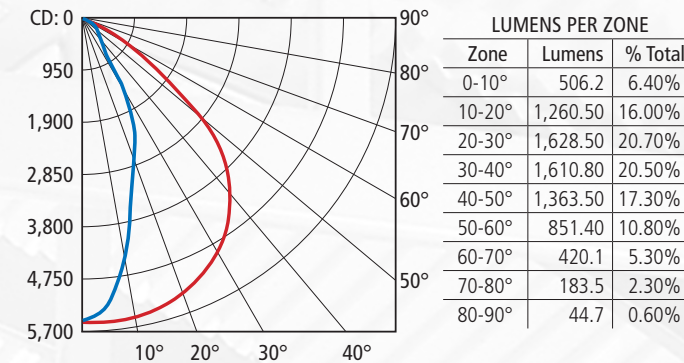
AFL10-LED-VF-54L3K50 ■ = 0°H ■ = 90°H



81 ft = 1 fc maximum distance

5,000K, 350mA – 62W

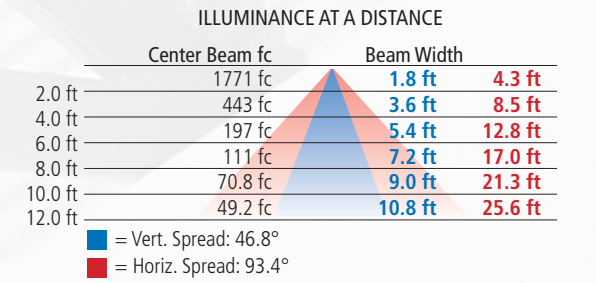
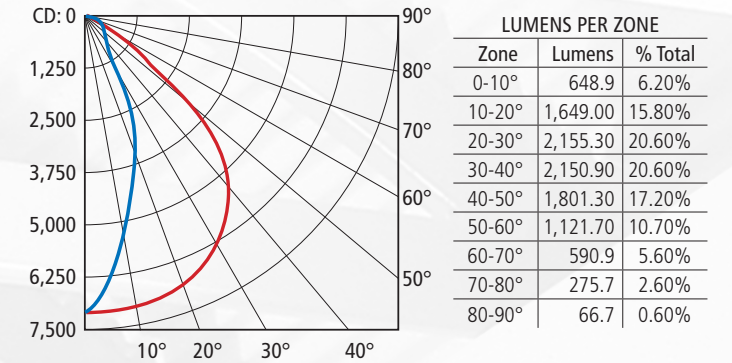
AFL10-LED-VF-54L5K35 ■ = 0°H ■ = 90°H



74 ft = 1 fc maximum distance

5,000K, 500mA – 88W

AFL10-LED-VF-54L5K50 ■ = 0°H ■ = 90°H

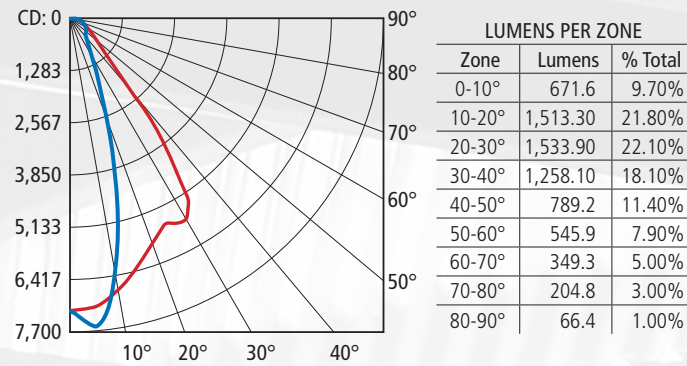


90 ft = 1 fc maximum distance

Narrow Flood Polar Candela Distribution

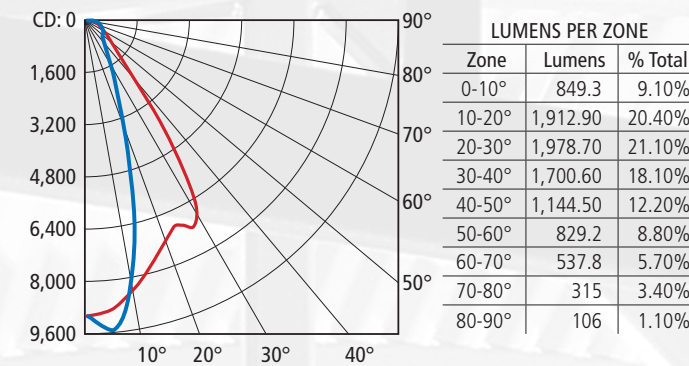
3,000K, 350mA – 62W

AFL10-LED-NF-54L3K35 ■ = 0°H ■ = 90°H



3,000K, 500mA – 88W

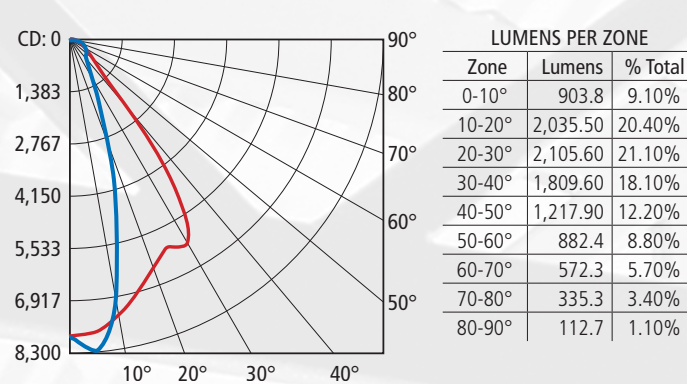
AFL10-LED-NF-54L3K50 ■ = 0°H ■ = 90°H



Narrow Flood Polar Candela Distribution (cont.)

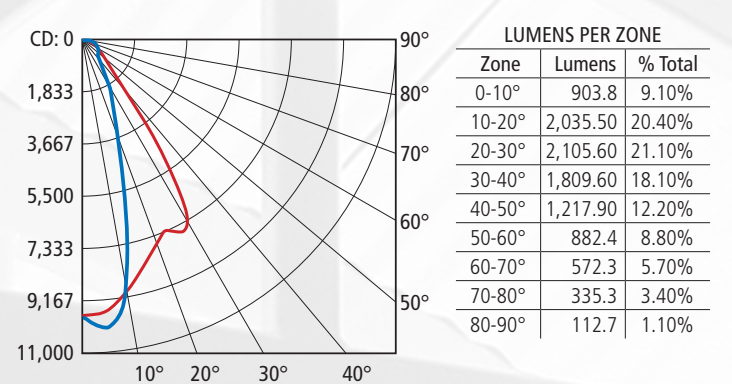
5,000K, 350mA – 62W

AFL10-LED-NF-54L5K35 ■ = 0°H ■ = 90°H



5,000K, 500mA – 88W

AFL10-LED-NF-54L5K50 ■ = 0°H ■ = 90°H



ILLUMINANCE AT A DISTANCE

	Center Beam fc	Beam Width	
2.0 ft	1813 fc	1.2 ft	2.9 ft
4.0 ft	453 fc	2.3 ft	5.7 ft
6.0 ft	201 fc	3.5 ft	8.6 ft
8.0 ft	113 fc	4.6 ft	11.4 ft
10.0 ft	72.5 fc	5.8 ft	14.3 ft
12.0 ft	50.3 fc	6.9 ft	17.1 ft

■ = Vert. Spread: 32.2°
■ = Horiz. Spread: 71.0°

85 ft = 1 fc maximum distance

ILLUMINANCE AT A DISTANCE

	Center Beam fc	Beam Width	
2.0 ft	2266 fc	1.2 ft	2.8 ft
4.0 ft	566 fc	2.3 ft	5.6 ft
6.0 ft	252 fc	3.5 ft	8.4 ft
8.0 ft	142 fc	4.7 ft	11.2 ft
10.0 ft	90.6 fc	5.8 ft	14 ft
12.0 ft	62.9 fc	7.0 ft	16.7 ft

■ = Vert. Spread: 32.5°
■ = Horiz. Spread: 69.8°

97 ft = 1 fc maximum distance

ILLUMINANCE AT A DISTANCE

	Center Beam fc	Beam Width	
2.0 ft	2411 fc	1.2 ft	2.8 ft
4.0 ft	603 fc	2.3 ft	5.6 ft
6.0 ft	268 fc	3.5 ft	8.4 ft
8.0 ft	151 fc	4.7 ft	11.2 ft
10.0 ft	96.4 fc	5.8 ft	14.0 ft
12.0 ft	67 fc	7.0 ft	16.7 ft

■ = Vert. Spread: 32.5°
■ = Horiz. Spread: 69.8°

89 ft = 1 fc maximum distance

ILLUMINANCE AT A DISTANCE

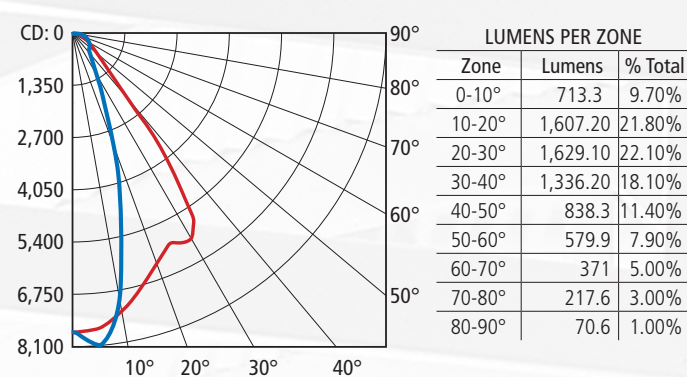
	Center Beam fc	Beam Width	
2.0 ft	2411 fc	1.2 ft	2.8 ft
4.0 ft	603 fc	2.3 ft	5.6 ft
6.0 ft	268 fc	3.5 ft	8.4 ft
8.0 ft	151 fc	4.7 ft	11.2 ft
10.0 ft	96.4 fc	5.8 ft	14.0 ft
12.0 ft	67 fc	7.0 ft	16.7 ft

■ = Vert. Spread: 28.0°
■ = Horiz. Spread: 72.2°

98 ft = 1 fc maximum distance

4,000K, 350mA – 62W

AFL10-LED-NF-54L4K35 ■ = 0°H ■ = 90°H



ILLUMINANCE AT A DISTANCE

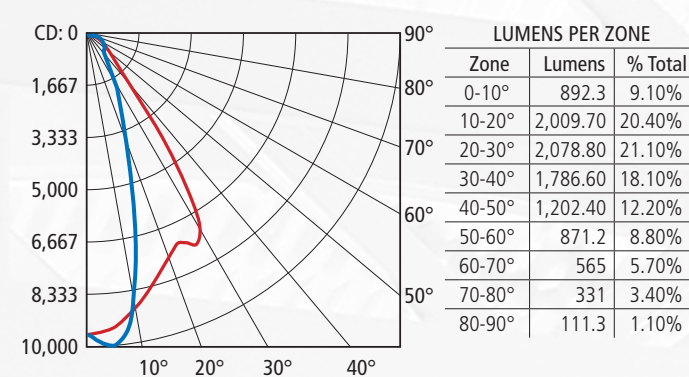
	Center Beam fc	Beam Width	
2.0 ft	1925 fc	1.2 ft	2.9 ft
4.0 ft	48 fc	2.3 ft	5.7 ft
6.0 ft	214 fc	3.5 ft	8.6 ft
8.0 ft	120 fc	4.6 ft	11.4 ft
10.0 ft	77.0 fc	5.8 ft	14.3 ft
12.0 ft	53.5 fc	6.9 ft	17.1 ft

■ = Vert. Spread: 32.2°
■ = Horiz. Spread: 71.0°

88 ft = 1 fc maximum distance

4,000K, 500mA – 88W

AFL10-LED-NF-54L4K50 ■ = 0°H ■ = 90°H

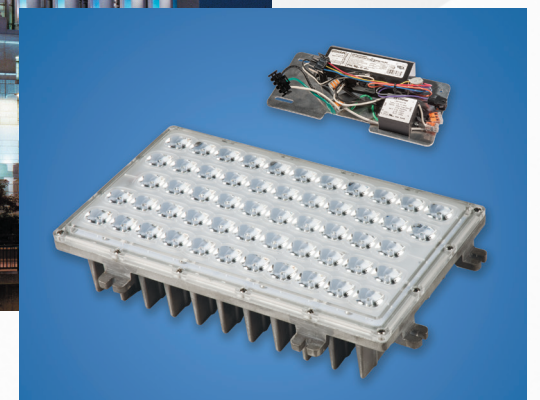


ILLUMINANCE AT A DISTANCE

	Center Beam fc	Beam Width	
2.0 ft	2381 fc	1.2 ft	2.8 ft
4.0 ft	595 fc	2.3 ft	5.6 ft
6.0 ft	165 fc	3.5 ft	8.4 ft
8.0 ft	149 fc	4.7 ft	11.2 ft
10.0 ft	95.2 fc	5.8 ft	14.0 ft
12.0 ft	66.1 fc	7.0 ft	16.7 ft

■ = Vert. Spread: 32.5°
■ = Horiz. Spread: 69.8°

98 ft = 1 fc maximum distance



The AFL10 LED Upgrade Kit (AFL10-LED-KIT) is available.

AFL10 LED Architectural Floodlight



AFL10 LED ORDERING CODE

AFL10-LED								
Fixture	Distribution	# LED's	CCT	Drive Current	Voltage	Color	Mounting	Photocell Options
WF Wide Flood	VF Vertical Flood	54 54 LEDs	3K 3000K	35 350mA	UV 120-277V	BL Black	HDS Heavy Duty Swivel	A30 120V Button Photocell
NF Narrow Flood			4K 4000K	50 500mA	347 347V	DB Dark Bronze		A31 208V Button Photocell
			5K 5000K		480 480V	LG Light Gray		A32 240V Button Photocell
						PS Platinum Silver		A33 277V Button Photocell
						TT Titanium		A34 480V Button Photocell
						WH White		A35 347V Button Photocell
						CC Custom Color		
Fuse Options	Accessories			CFA Extrusion Color	CFA Filter Lens Color			
SF 120, 277, 347 Line Volts	BD Barn Doors	WM1/WEB Wall Mount	BL Black	15 Deep Straw				
DF 208, 240, 480 Line Volts	FH Fixed Hood	SPM-X Side Pole Mount	DB Dark Bronze	5 Rose Tint				
	FS Full Shield	TM2 Twin Mount	LG Light Gray	27 Medium Red				
	CFA Color Filter Assembly	PT Post Top Mount	PS Platinum Silver	69 Brilliant Blue				
	JBR2/3/21/24 Brass In-Grade Architectural J-Box	PT2 Twin Post Top Mount	TT Titanium	91 Primary Green				
	JBR30 Brass In-Grade Staked J-Box	SMT Surface Mount Tenon	WH White					
	SM18 Stanchion Mount	SM2 Stanchion Mount Tenon	CC Custom Color					
	J-27N Surface Mount	WM2/WEB Wall Mount Tenon						
	WM Wall or Ceiling Mount	SPT-X Side Pole Mount Tenon						
	JB1 Architectural J-Box	M2B Twin Mount Tenon						
		M3E Triple Mount Tenon						

AFL10 LED UPGRADE KIT ORDERING CODE

AFL10-LED-KIT					
Fixture	Distribution	# LED's	CCT	Drive Current	Voltage
WF Wide Flood	VF Vertical Flood	54 54 LEDs	3K 3000K	35 350mA	UV 120-277V
NF Narrow Flood			4K 4000K	50 500mA	347 347V
			5K 5000K		480 480V

Current

Current Lighting Solutions, LLC

701 Millennium Blvd.
Greenville, SC 29607

currentlighting.com/kimlighting

© 2022 HLI Solutions, Inc. All rights reserved. Information and specifications subject to change without notice. All values are design or typical values when measured under laboratory conditions.

Rev 05/31/22

kl_aff10led_lit_R01