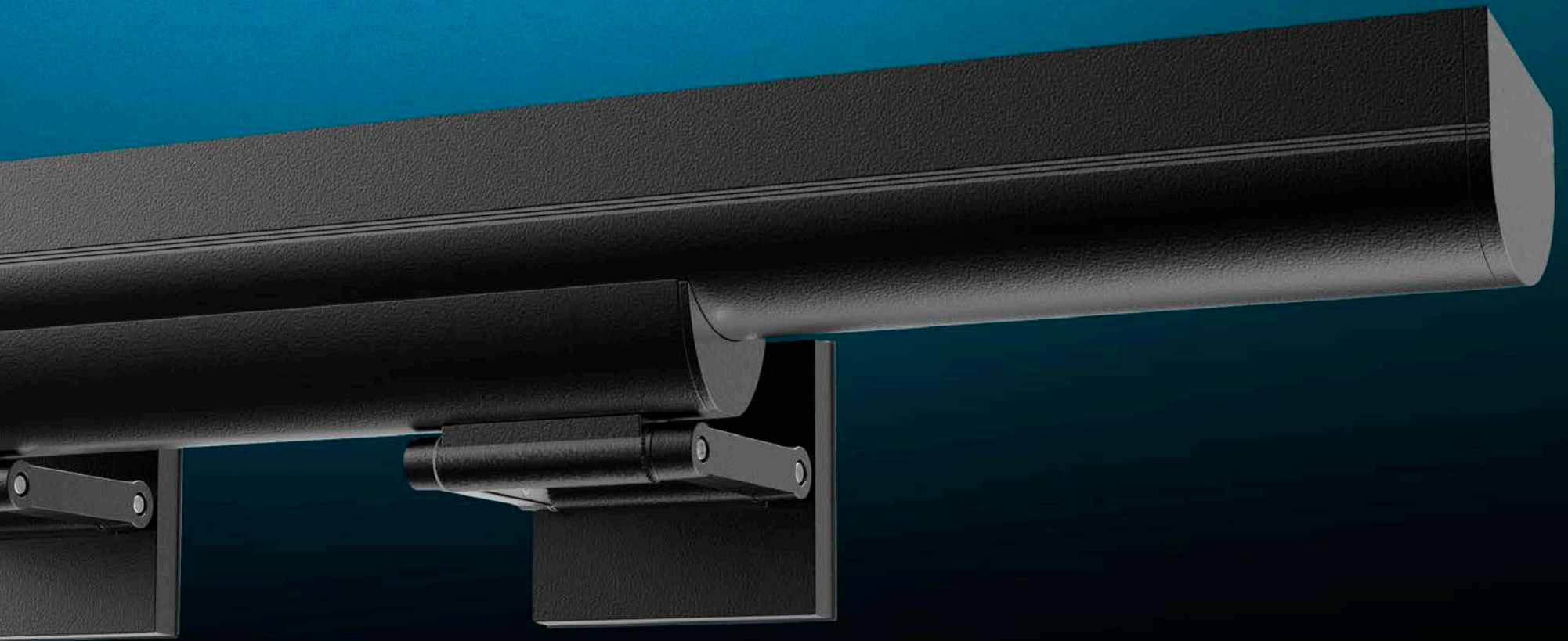


# intent

linear floodlights



# intent

linear floodlights

The Intent linear floodlight family joins Kim Lighting's extensive floodlight collection. This compact architectural linear flood provides optimal appearance and performance for exterior wall washing, grazing or sign lighting applications in static white, RGBW and RGBA configurations.

## INT2



White	
24L-30	3,000 lm
24L-35	4,000 lm
24L-60	6,000 lm

## RGBW

12L-15

2'

## INT3



White	
36L-40	4,500 lm
36L-60	6,000 lm
36L-95	9,000 lm

## RGBW

18L-35

3'

## INT4



White	
48L-55	6,000 lm
48L-80	8,000 lm
48L-125	12,000 lm

## RGBW

24L-40

4'

B Z N Z[ ho^1 ahp g p la p Zef hngm



# the intent is seamless variety

The wide array of distributions offered allow for completely different effects to be shown, even in the same application. Narrow distribution provides a subtle accent to highlight the architectural details surrounding the windows, while the wide flood bathes the façade dramatically in bands of light drawing eyes upward.



WIDE FLOOD



NARROW

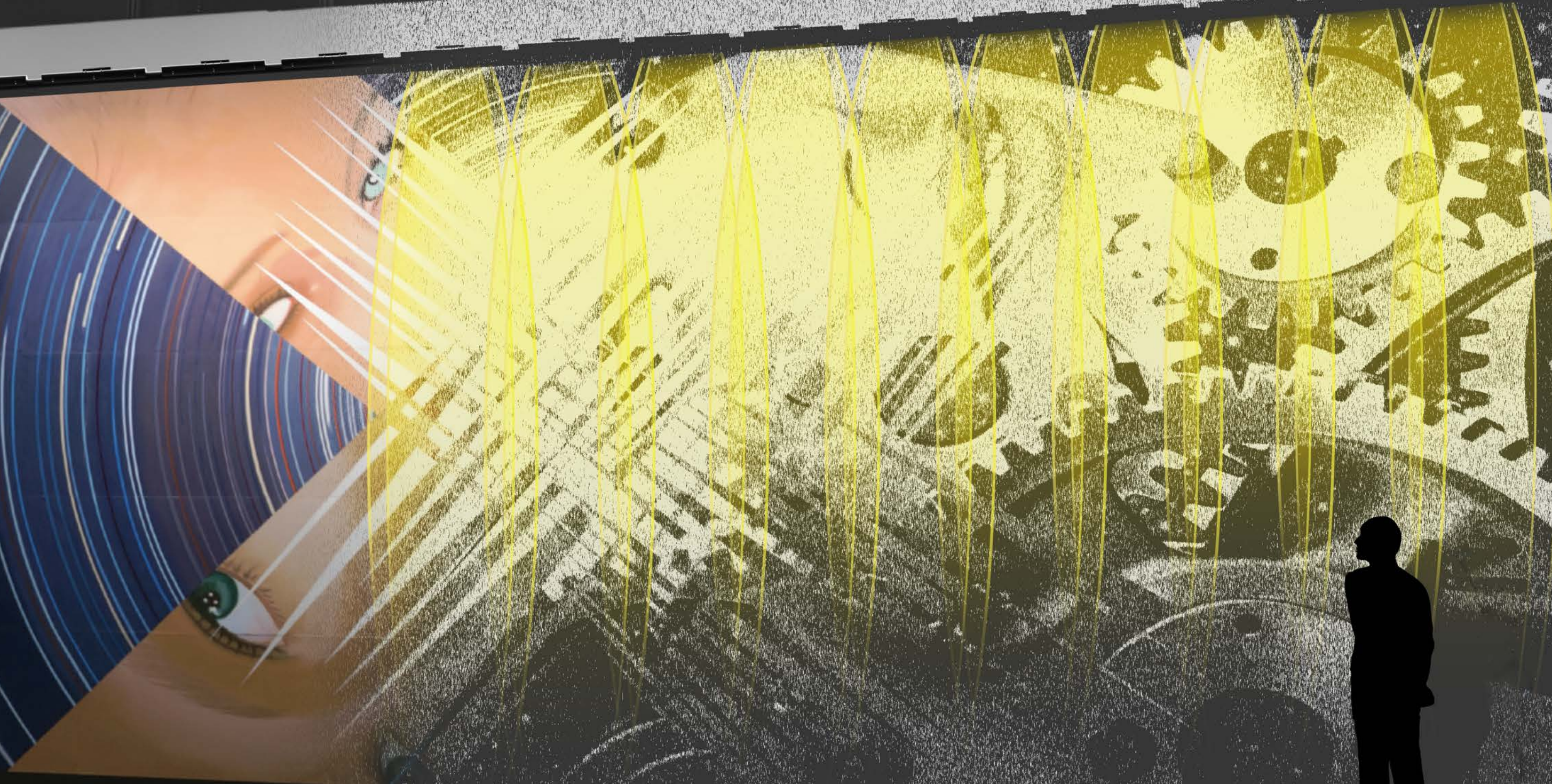
4'  
Wide  
Flood

2'  
Narrow

the intent is

**uniformity**

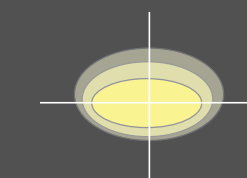
Wall wash distribution creates a uniform lit appearance even with a minimal 12" setback. The optic creates an asymmetric pattern that allows for light to skim the surface without the luminaire being tilted. This allows for an even distribution of light across the surface.



the intent is  
dramatic texture



Wall Graze distribution enhances textures and provides more drama to a space. The wide 33° horizontal angle provides a beautiful blending of colors from fixture to fixture, while the narrow 8° vertical angle creates shadows on the illuminated surface.

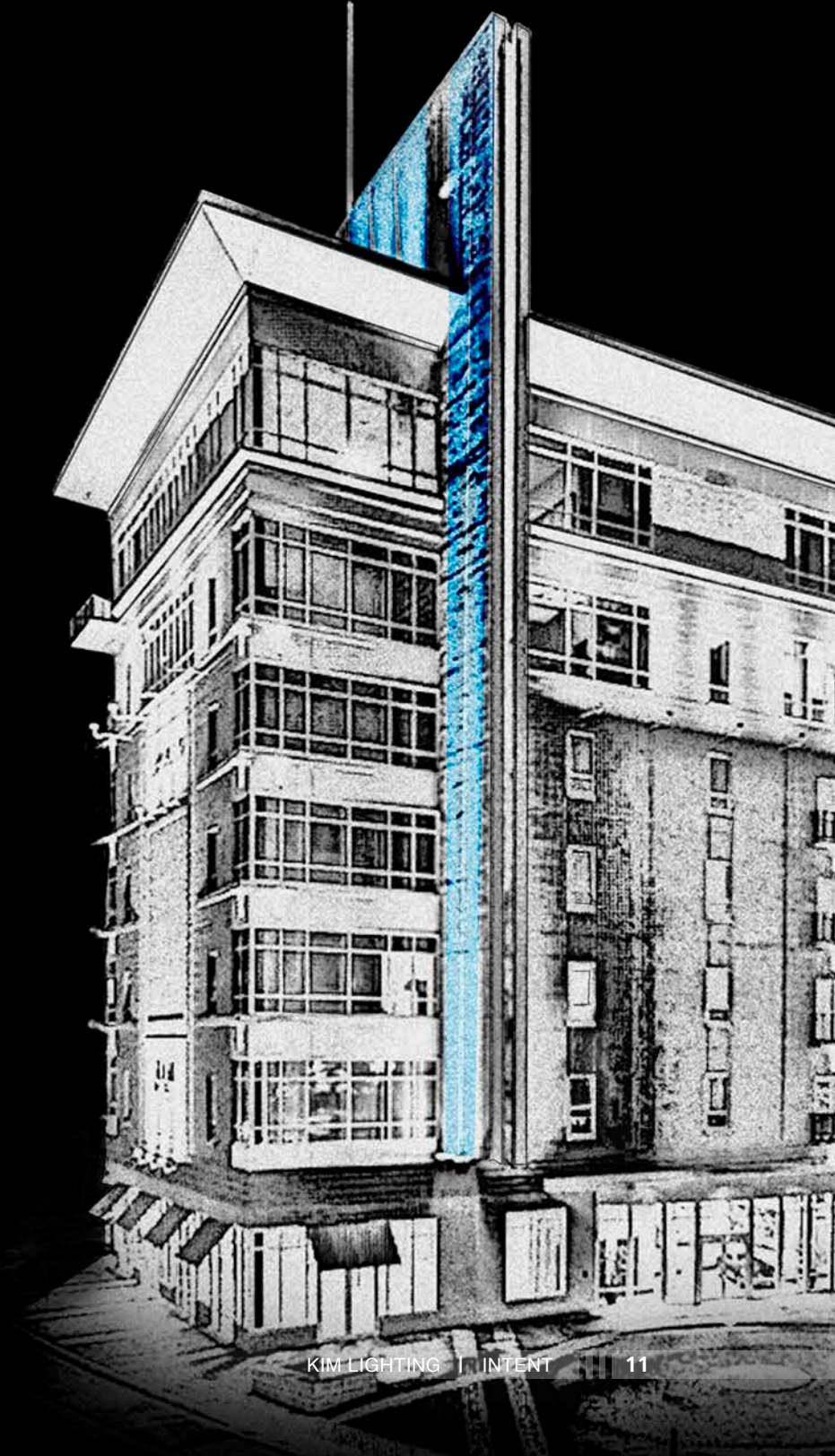


WALL GRAZE



# the intent is narrow throw

Narrow Spot distribution has up to a 141,785 center beam candlepower out of a 7° distribution, which makes it ideal for throwing colorful pillars of light up skyscrapers or bridges.



# the intent is connectivity

This innovative design allows for linear fixture runs without ever having to open the luminaire and expose it to the elements. This is achieved by connecting an IP68 rated cord between two sealed driver compartments. An architectural cover is also offered to shield the cord and continue the seamless appearance of the luminaire.

Narrow  
(17x17)



Narrow Medium  
(30x30)



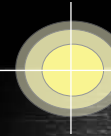
Medium Flood  
(63x63)



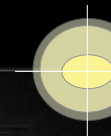
Wide Flood  
(80x80)



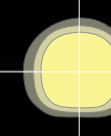
Wall Wash  
(30x20)



Wall Graze  
(52x12)



Horizontal Flood  
(54x24)



# IES static white distributions



# IES RGBW

distributions



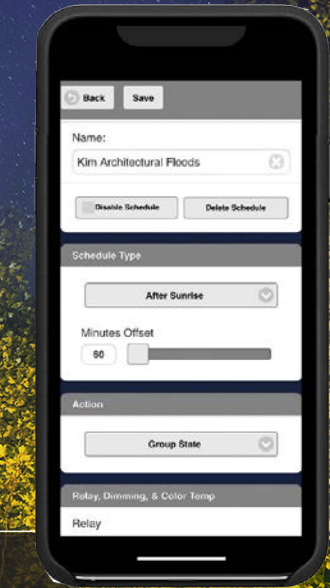
Narrow Spot (7x7)   Spot (11x11)   Narrow (15x15)   Narrow Medium (23x23)   Medium (33x33)   Medium Flood (54x54)   Wall Graze (33x8)





# static white control options

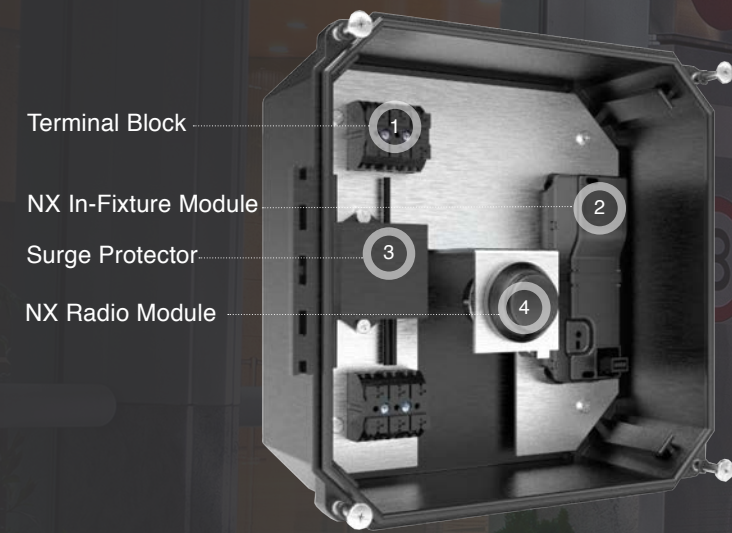
Luminaires enabled with NX Lighting Controls wireless radios create an intelligent mesh network with the interior controls. Groups are dimmed via an astronomical time clock and schedules can be updated at any time with the Bluetooth® commissioning app.



Static white configurations are not compatible with DMX

### NX Enabled Remote Mount Enclosure

The NXW-RME is a remote, wall mount enclosure that can be wired to the Intent luminaires for mounting flexibility.



NX is not compatible with RGBW or RGBA configurations of the Intent.

# color control options

 **Bluetooth®**  
DMX



### 1. Intent

Pair the Intent with the full family of Kim Lighting color changing products to create a dynamic, ever-changing application.

### 2. Pavilion

Pavilion bollard is available in round and square configurations. An integral NEMA 3R enclosure, 2-Gang recessed box, and Bluetooth® RGBW accent are just a few of the defining features of Pavilion.

### 3. Kim Floodlight

The Kim Architectural Flood Collection consists of three sizes of flood fixtures in both static white and RGBW configurations.

### 4. LTV8

The Lightvault is a versatile in-grade luminaire that is available in 8, 10 and 13 inch diameters.

 **Bluetooth®**

Current's exclusive Bluetooth® app provides a cost-effective way to set color, add presets, dim the luminaires, or even pull specific colors from a photograph.

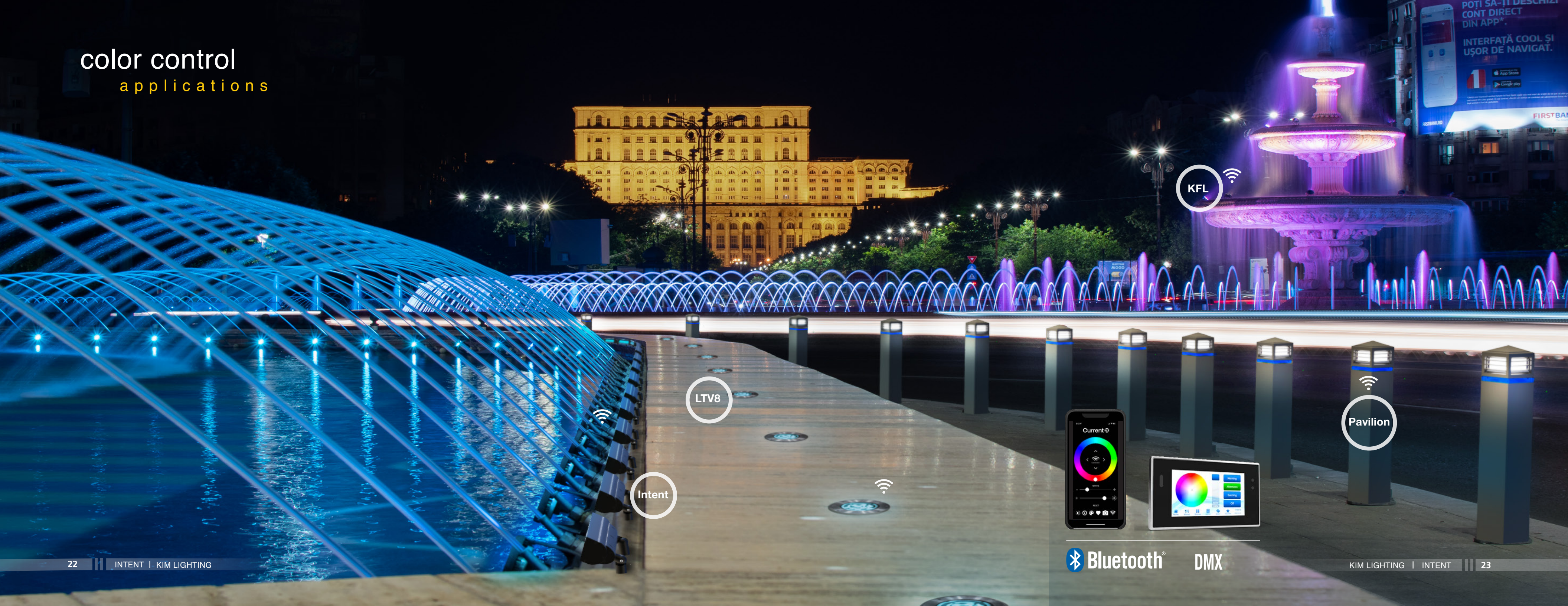


DMX 

A new partnership with Pharos® Controls now allows Kim Lighting to offer a full suite of DMX interface controls. See the Pharos® Spec Sheet for more details.



# color control applications



KFL

LTV8

Intent

Pavilion



Bluetooth<sup>®</sup> DMX

# engineered excellence

- 1 Luminaire form integrates a three band design element that is replicated on a variety of Kim Lighting luminaires to provide a complete and coordinated site offering.
- 2 Luminaire is designed for wall or ground mounting applications. Each mounting utilizes specially designed knuckles that integrate into the luminaire design.
- 3 The integral visor provides shielding of the LEDs for an improved appearance after installation without any bulky bolt-ons.
- 4 Multi-Die LEDs allow for seamless color blending when paired with our blended optics.
- 5 The Intent color changing flood is unique in it's optical approach. All color mixing takes place within the optic to ensure a uniform color is shown on the desired surface.
- 6 Glass lens protects internal components with a clean, high quality finish. Additional louvers available to provide glare control.
- 7 Connection accessories allow fixtures to create a seamless run of product without the need to open the luminaire.

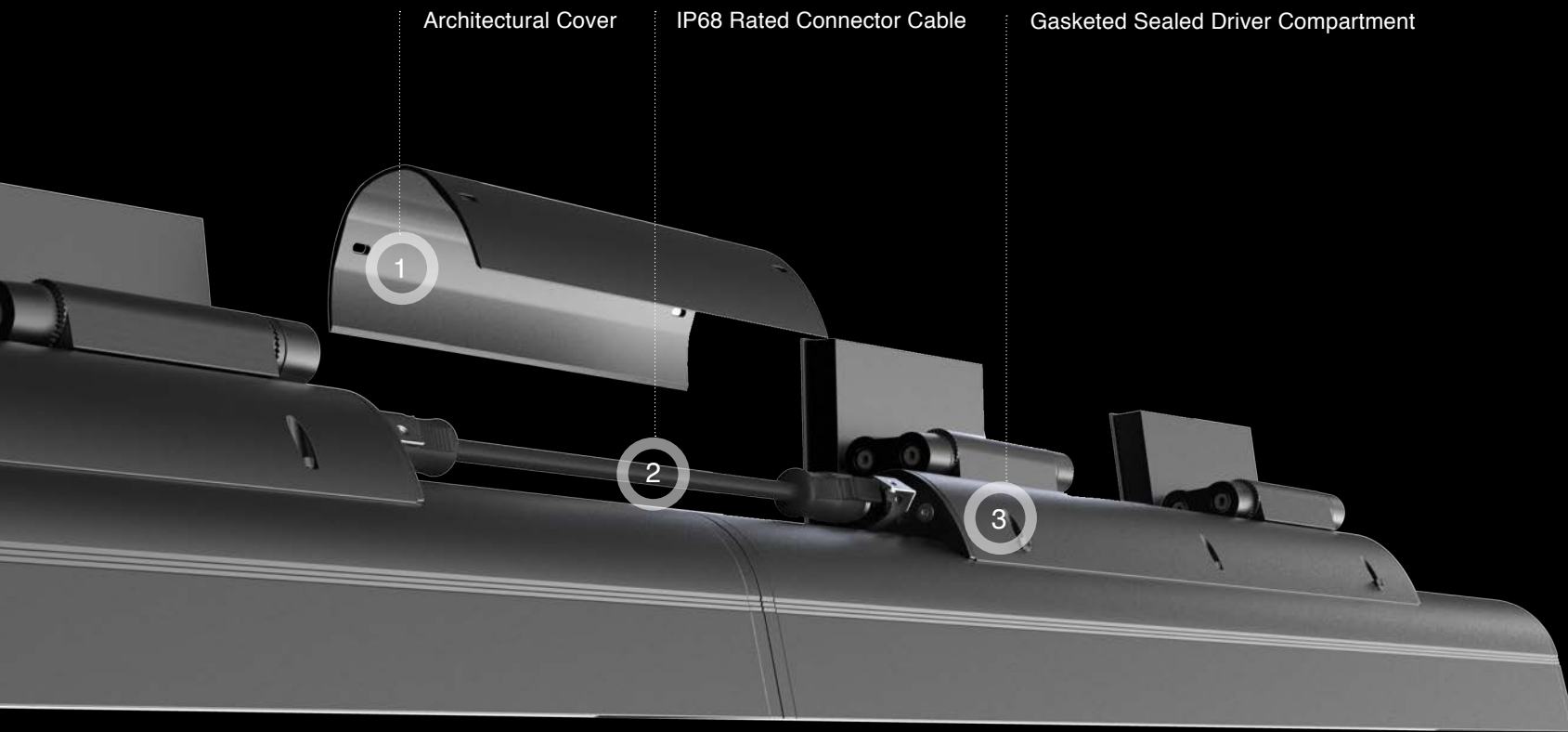
## Internal Features

Thermal fold-back dims the fixture in the chance it sees too high of temperatures. This feature protects the components from over-heating which would decrease the life of the luminaire.

Standard 10kA 20kV surge suppression provides an enhanced level of protection against power spikes and surges for ultimate peace of mind and long-term luminaire operation.

# connection options

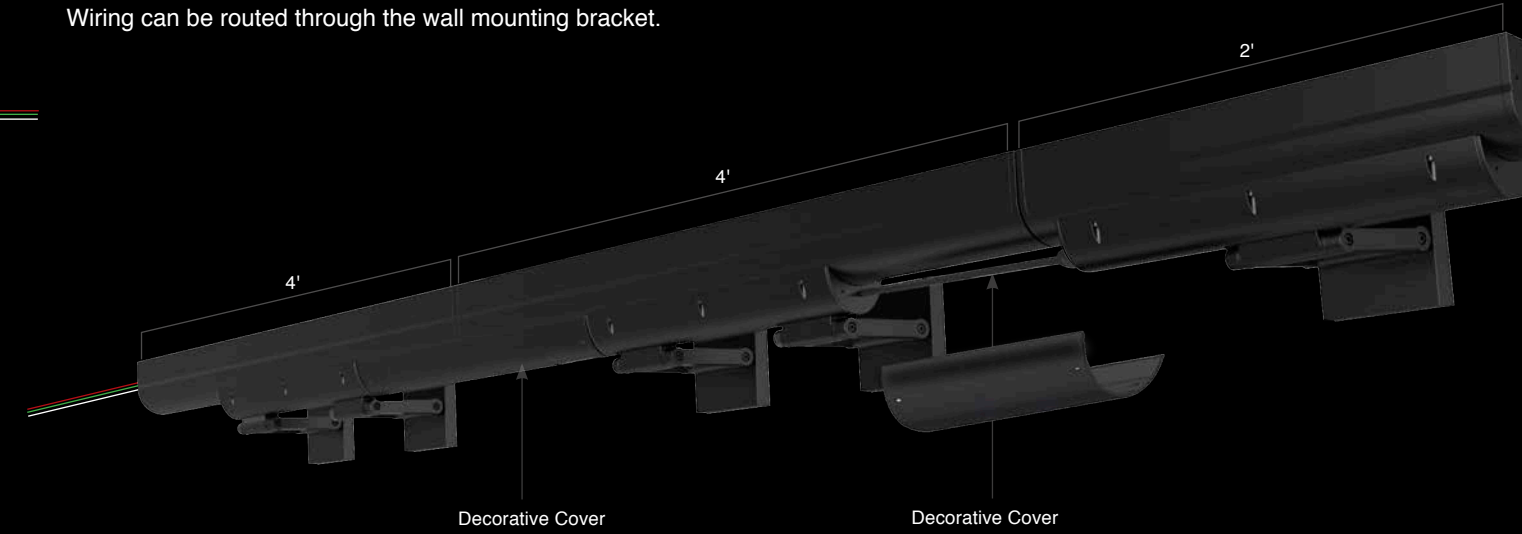
## Connection for Continuous Run



### Arm

Mounting Bracket  
Wiring can be routed through the wall mounting bracket.

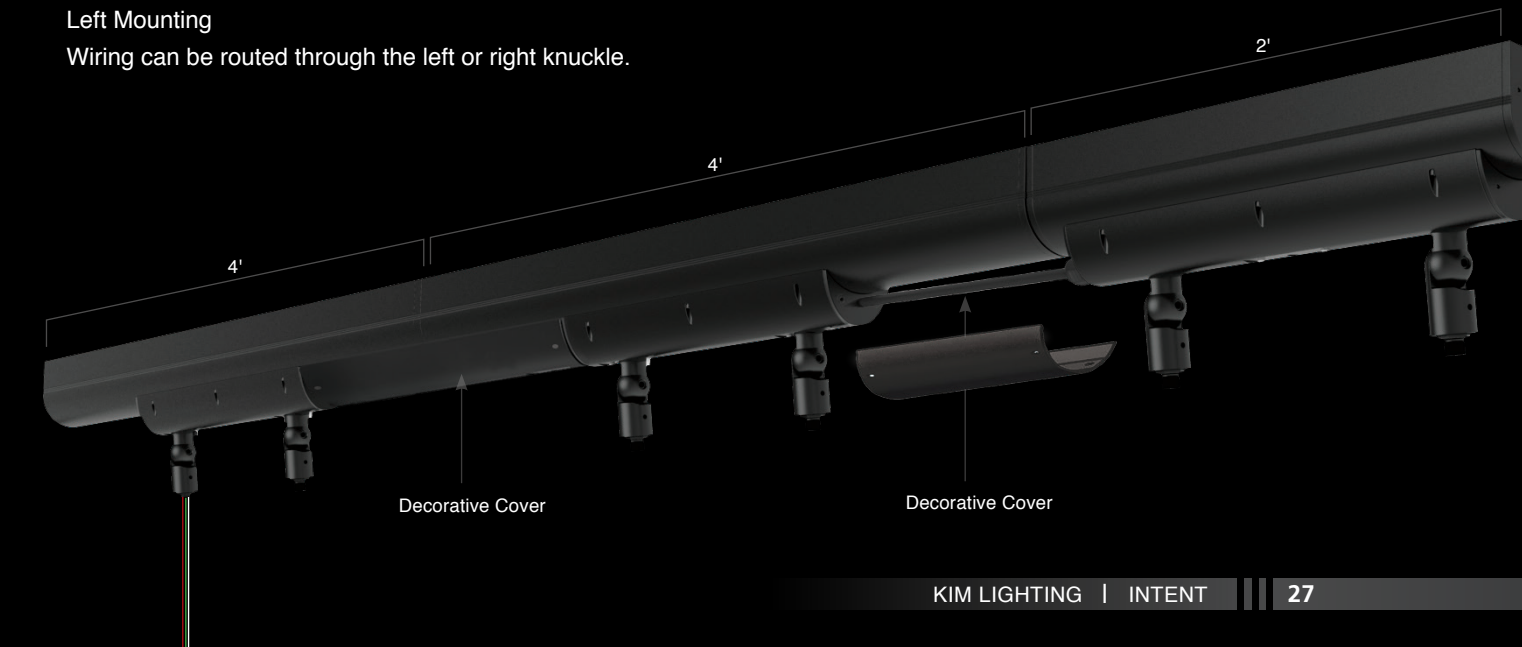
**Cable Ready**  
Wiring can be mounted through a cable on the side of the driver compartment. If this option is chosen, fixture will automatically come with connectors on both sides of the fixture.



### Knuckle

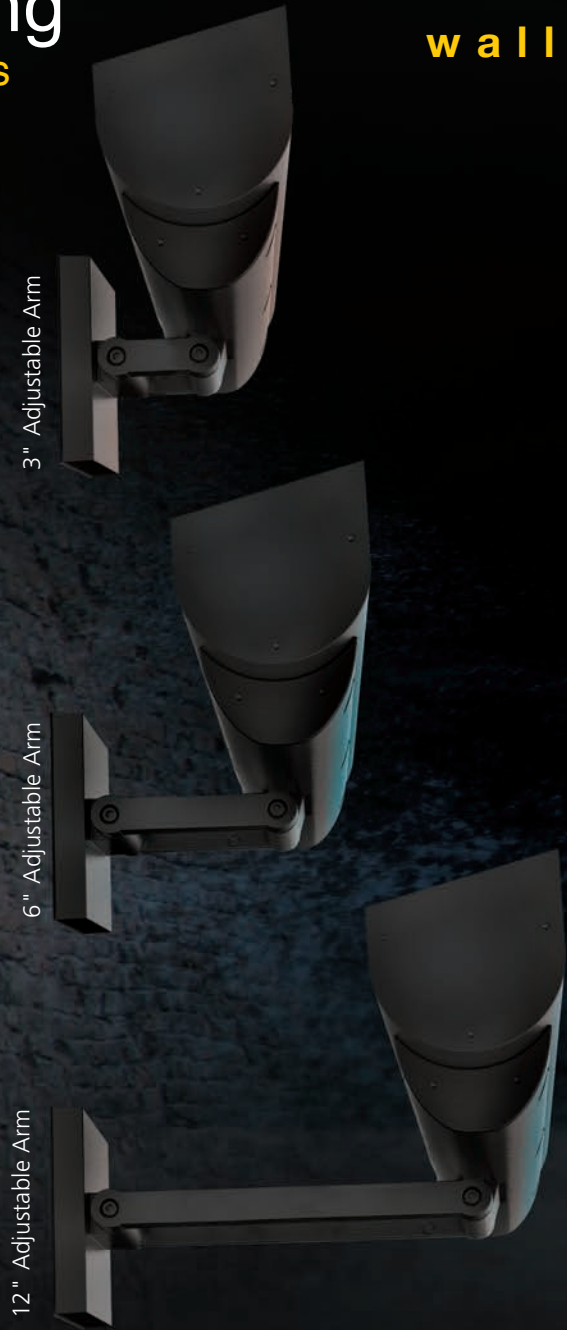
Left Mounting  
Wiring can be routed through the left or right knuckle.

**Left Mounting and Cable Ready**  
Both above wiring configurations can be combined to create the configuration shown here.



# mounting options

## wall mount



## ground mount

### Portable Spear Mount (J-25N)

Cast iron with 1/2" NPSM fixture mount. Hot dip galvanized finish. 5.5 cu in. splice compartment. (SJTW-A) 3-wire cord and plug. Supplied with (3) wire nuts and (3) mastic seals for waterproofing connections. 9' cord length.

### Brass In-Grade Architectural Junction Box (JBR) (Threaded Knuckle Mount Only)

Die-cast brass with 1/2" NPSM fixture mount and die-cast cover. Internal set screw provided for locking position. 21 cu in. internal volume.

**Note:** All side taps provided with plugs. Creates a flush-mounted appearance. May be cast in concrete for increased stability.

JBR-2 (2) 1/2" NPT in bottom JBR-3 (2) 3/4" NPT in bottom JBR-21 (2) 1/2" NPT in sides, (2) 1/2" NPT in bottom JBR-24 (4) 1/2" NPT in sides, (4) 1/2" NPT in bottom.

### Architectural Junction Box (JB1) (Threaded Knuckle Mount Only)

Die-cast aluminum with 1/2" NPSM fixture mount. Internal set screw provided for locking position. Two 1/2" NPSM in bottom, 17 cu in. internal volume.

Specify finish: BL - Black, DB - Dark Bronze, GT - Graphite  
Example: JB1/GT

### Stanchion Mount (SM18) (Threaded Knuckle Mount Only)

3" O.D. by .188" wall cast low copper (<0.6% Cu) aluminum with 1/2" NPSM fixture mount and hand hole with flush cover. Internal set screw fixture lock accessible through hand hole. Internal ground lug supplied with installed lead.



Visit [www.aal.net](http://www.aal.net) for other available mounting options

# ordering

## White & RGBW

HOUSING	LENGTH	LIGHT ENGINE	CCT	BEAM SPREAD	VOLTAGE	MOUNTING	CABLE READY	INPUT WIRING	COLOR	OPTIONS
White INT Flood Luminaire	2 2 Foot	<b>WHITE</b> 24L-30 24LED, 30W, 3,000 lm	<b>WHITE</b> 5K7 5000K, 70 CRI	<b>N</b> Narrow	<b>UNV</b> Universal 120-277V	<b>K</b> Threaded Knuckle	<b>CR</b> Cable Ready	<b>LM</b> Left Mounting	<b>BL</b> Black	<b>SF</b> Single Fuse (120/277/347)
		24L-35 24LED, 40W, 4,000 lm	5K8 5000K, 80 CRI	<b>NM</b> Narrow Medium	<b>347</b> 347V	<b>A3</b> 3" Adjustable arm	<b>NCR</b> Non Cable Ready	<b>RM</b> Right Mounting	<b>DB</b> Dark Bronze	<b>DF</b> Double Fuse (208/240/480)
		24L-60 24LED, 60W, 6,000 lm	5K9 5000K, 90 CRI	<b>MF</b> Medium Flood	<b>480</b> 480V	<b>A6</b> 6" Adjustable arm		<b>MB</b> Mounting Bracket <sup>1</sup>	<b>GT</b> Graphite	<b>DL</b> Diffused Lens <sup>2</sup>
	3 3 Foot	36L-40 36LED, 40W, 4,500 lm	4K7 4000K, 70 CRI	<b>WF</b> Wide Flood	<b>HF</b> Horizontal Flood				<b>LG</b> Light Gray	<b>LVR</b> Louver
		36L-60 36LED, 60W, 6,000 lm	4K8 4000K, 80 CRI	<b>WG</b> Wall Graze	<b>WW</b> Asymmetric Wall Wash				<b>PS</b> Platinum Silver	<b>MGF</b> Marine Grade
		36L-95 36LED, 95W, 9,000 lm	4K9 4000K, 90 CRI						<b>TT</b> Titanium	<b>PC</b> Button Photocontrol
	4 4 Foot	48L-55 48LED, 55W, 6,000 lm	3K7 3000K, 70 CRI						<b>WH</b> White	
		48L-80 48LED, 80W, 8,000 lm	3K8 3000K, 80 CRI						<b>CC</b> Custom Color <sup>4</sup>	
		48L-125 48LED, 125W, 12,000 lm	3K9 3000K, 90 CRI							

HOUSING	LENGTH	WATTS	CCT	BEAM SPREAD	VOLTAGE	MOUNTING	CABLE READY	INPUT WIRING	COLOR	OPTIONS	ACCESSORIES
RGBW INT Flood Luminaire	2 2 Foot	<b>RGBW</b> 12L-15 15W	<b>RGBW</b> RGBW 6500K	<b>NS</b> Narrow Spot	<b>UNV</b> Universal 120-277V	<b>K</b> Threaded Knuckle	<b>CR</b> Cable Ready	<b>LM</b> Left Mounting	<b>BL</b> Black	<b>SF</b> Single Fuse (120/277/347)	<b>J-25N</b> Stake
		3 3 Foot	18L-35 35W	<b>SP</b> Spot	<b>347</b> 347V	<b>A3</b> 3" Adjustable arm	<b>NCR</b> Non Cable Ready	<b>RM</b> Right Mounting	<b>DB</b> Dark Bronze	<b>DF</b> Double Fuse (208/240/480)	<b>JB1</b> Architectural Junction Box
	4 4 Foot	24L-40 40W	<b>RGBA</b> RGBA 590nm <sup>3</sup>	<b>N</b> Narrow	<b>480</b> 480V	<b>A6</b> 6" Adjustable arm		<b>MB</b> Mounting Bracket <sup>1</sup>	<b>GT</b> Graphite	<b>MGF</b> Marine Grade	<b>JBR</b> Composite In-Grade Architectural Junction Box
			<b>M</b> Medium	<b>WF</b> Wide Flood			<b>A12</b> 12" Adjustable arm			<b>PS</b> Platinum Silver	<b>PC</b> Button Photocontrol
			<b>WG</b> Wall Graze					<b>LG</b> Light Gray		<b>SM18</b> Stanchion Mount	<b>INT-CK23</b> 2ft-3ft Connector Kit
			<b>MF</b> Medium Flood					<b>PS</b> Platinum Silver		<b>INT-C2FT</b> 2ft Connector Cable	<b>INT-CK24</b> 2ft-4ft Connector Kit
								<b>TT</b> Titanium		<b>INT-C3FT</b> 3ft Connector Cable	<b>INT-CK33</b> 3ft-3ft Connector Kit
								<b>WH</b> White		<b>INT-C4FT</b> 4ft Connector Cable	<b>INT-CK34</b> 3ft-4ft Connector Kit
								<b>CC</b> Custom Color <sup>4</sup>		<b>INT-C5FT</b> 5ft Connector Cable	<b>INT-CK44</b> 4ft-4ft Connector Kit
										<b>INT-C10FT</b> 10ft Connector Cable	



<sup>1</sup> Only available with 2ft adjustable arm  
<sup>2</sup> Only available with WF on static white configuration  
<sup>3</sup> Not Turtle Friendly  
<sup>4</sup> Contact factory  
<sup>5</sup> Only available with static white configurations





**Current** 

**Current - HLI Brands**

701 Millennium Blvd.  
Greenville, SC 29607

[currentlighting.com/kimlighting](https://currentlighting.com/kimlighting)

© 2022 HLI Solutions, Inc. All rights reserved. Information and specifications subject to change without notice. All values are design or typical values when measured under laboratory conditions.

(Rev 10/20/22)

kl\_int\_lit\_R03

---