

# Architectural

FLOODLIGHT COLLECTION



# KFL Collection

architectural floodlights

This striking timeless form seamlessly blends high performance optics, controls, scalability and architectural mounting options that cover a variety of applications and enhance their environment.

**KFL3**  
**40L-90** 10,000 lm  
**60L-135** 15,000 lm  
**80L-175** 20,000 lm  
**KFL3 RGBW**  
**33L-75**

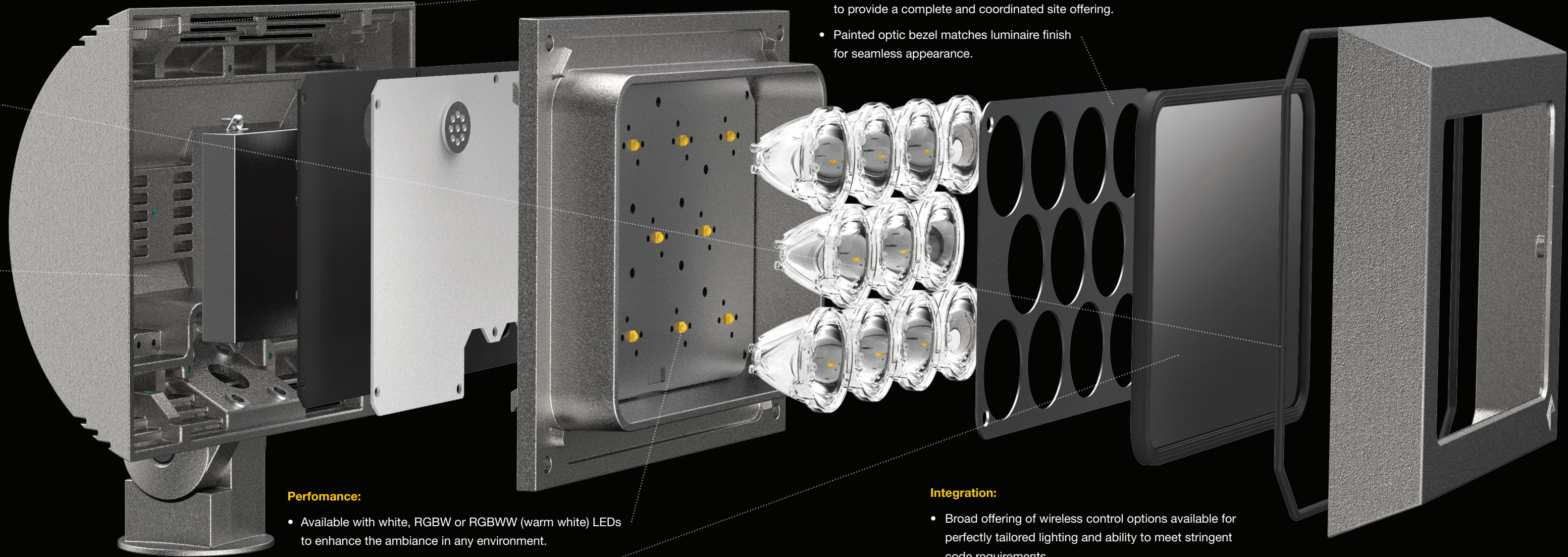
**KFL2**  
**24L-45** 5,000 lm  
**24L-70** 7,000 lm  
**KFL2 RGBW**  
**11L-15**  
**11L-35**

**KFL1**  
**8L-20** 2,000 lm  
**16L-40** 4,000 lm  
**KFL1 RGBW**  
**6L-8**

# engineered excellence

## Quality:

- Stainless steel hardware standard for ultimate durability.
- One-piece silicone gasketing independently seals optical and electrical compartments for long-term durability.
- Standard 10kA 20kV surge suppression provides an enhanced level of protection against power spikes and surges for ultimate piece of mind and long-term luminaire operation.
- Thermally isolated driver compartment enhances fixture performance and longevity.



## Form:

- Luminaire form integrates a three band design element that is replicated on a variety of Kim Lighting luminaires to provide a complete and coordinated site offering.
- Painted optic bezel matches luminaire finish for seamless appearance.

## Performance:

- Available with white, RGBW or RGBWW (warm white) LEDs to enhance the ambiance in any environment.
- Glass lens protects internal components with a clean, high quality finish.
- IP66 rated for worry-free performance in demanding outdoor applications.

## Integration:

- Broad offering of wireless control options available for perfectly tailored lighting and ability to meet stringent code requirements.
- Thoughtfully designed mounting accessories that integrate into the fixture design.

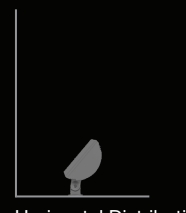
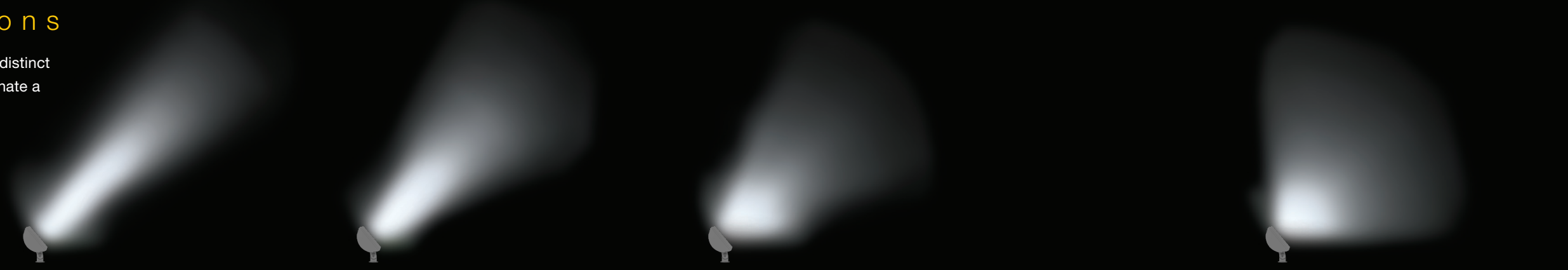
# IES white

## distributions

The KFL is available with six distinct distribution patterns to illuminate a variety of applications.



Vertical Distribution



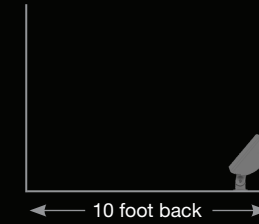
Horizontal Distribution

**Narrow 15° x 15°**

**Medium 25° x 25°**

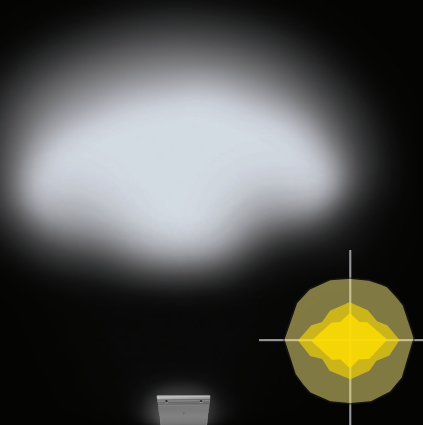
**Medium Flood 60° x 60°**

**Wide Flood 80° x 80°**



**Vertical Flood 20° x 50°**

10 foot back



**Horizontal Flood 50° x 20°**



## arboretum night stroll

The right floodlighting design can highlight beautiful surroundings to create a breathtaking scene. It draws your attention to details that could otherwise go unnoticed and creates a welcoming environment without ever drawing attention to the source.

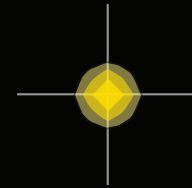
# IES RGB

distribut

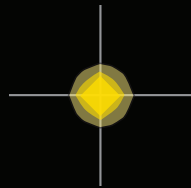
The KFL is available with color distribution pattern: variety of applications.



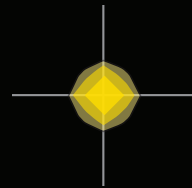
**Narrow Spot 7° x 7°**



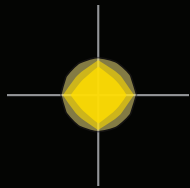
**Spot 9° x 9°**



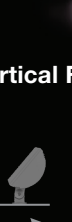
**Narrow 25° x 25°**



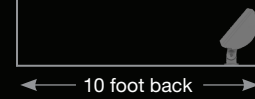
**Medium 35° x 35°**



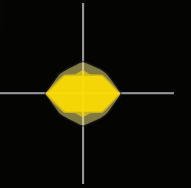
**Medium Flood 50° x 50°**



**Vertical Flood 40° x 8°**



**Horizontal Flood 40° x 8°**





## RGBW color to enhance architecture

Colors are meant to draw attention, make an impact, and evoke feelings. The flexibility that RGBW lighting gives us is the ability to alter the story of a space any day of the week.

Kim Lighting's architectural color changing flood is unique in its optical approach. All color mixing takes place within the optic to ensure a uniform color is shown on the desired surface. This eliminates the possibility of colors splitting and showing red, green, and blue shadows.

# mounting options

The KFL collection is extremely versatile and can adapt to virtually any application, which requires a variety of architectural mounting options with the same level of flexibility.



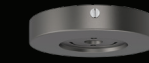
Architectural Junction Box



In-grade Staked Architectural Junction Box



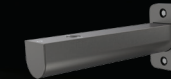
Surface Conduit Mount



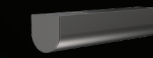
Wall or Ceiling Mount



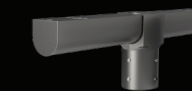
Stanchion Mount



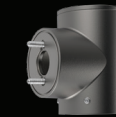
Wall Mount



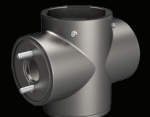
Side Pole Mount



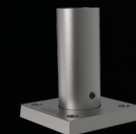
Twin Mount



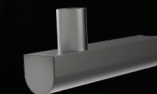
Post Top Mount



Twin Post Top Mount



Surface Mount Tenon



Side Pole Mount Tenon



Wall Mount Tenon



Twin Mount Tenon



Triple Mount Tenon



Stanchion Mount Tenon



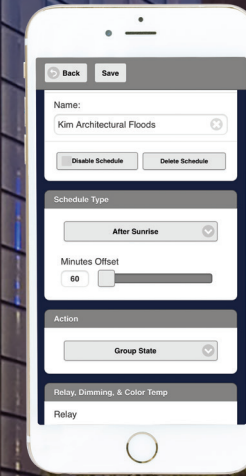
# optic a c c e s s o r i e s

Barn door and visor accessories are available for each size of the KFL luminaires to ensure the light is placed on target and kept out of occupant's vision.

# white control options



Luminaires enabled with NX Lighting Controls wireless radios create an intelligent mesh network with the interior controls. Groups are dimmed via an astronomical time clock and schedules can be updated at any time with the Bluetooth® commissioning app.



# color control options

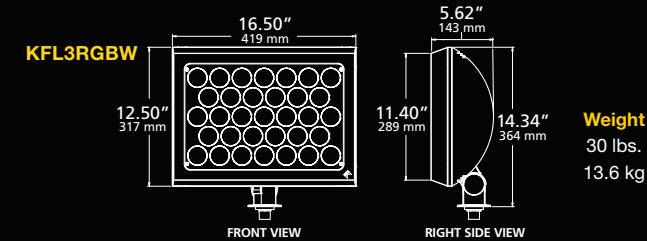
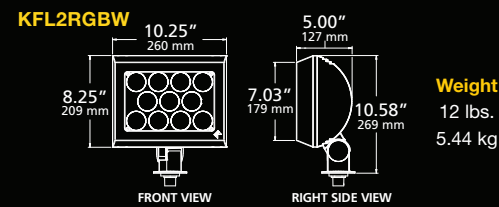
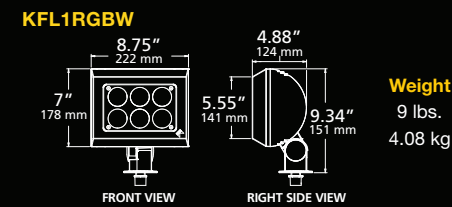
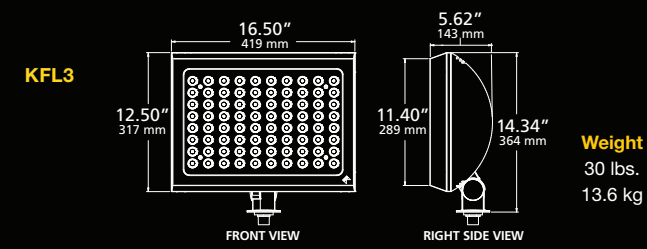
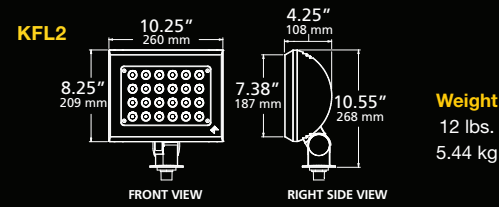
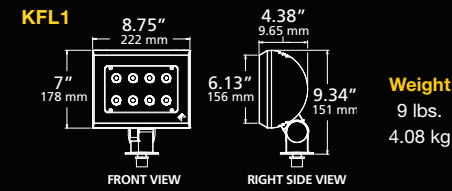
Bluetooth / DMX

Set the mood with the KFL collection by dimming and color control via Bluetooth® wireless or DMX hardwired connectivity. The Bluetooth app provides a cost-effective way to set color, add presets, dim the luminaires, or even pull specific colors from a photograph. A wired DMX protocol can also be used to create stunning light shows that seamlessly change color.



# ordering

## Kim Floodlights



## Kim Floodlights

SERIES	LIGHT ENGINE	CCT	BEAM SPREAD	VOLTAGE	MOUNTING	COLOR	CONTROLS OPTIONS	OPTIONS	OPTICAL OPTIONS	MOUNTING ACCESSORIES								
<b>KFL1</b> Flood	<b>8L-20</b> 20W, 2,000 lm	<b>3K7</b> 3000K, 70 CRI	<b>N</b> Narrow	<b>UNV</b> 120-240V	<b>Y</b> Architectural Yoke	<b>BLS</b> Black Gloss Smooth	<b>CD</b> Continuous Dimming (0-10V Dimming)	<b>F</b> Fusing	<b>BD</b> Barn Doors	<b>KFL1, KFL2, KFL3 &amp; RGBW MODELS</b>								
	<b>16L-40</b> 40W, 4,000 lm										<b>3K8</b> 3000K, 80 CRI	<b>M</b> Medium	<b>277</b> 277V	<b>K</b> Threaded Knuckle	<b>BLT</b> Black Matte Textured	<b>PC<sup>2</sup></b> Button Photocontrol	<b>HS</b> Half Glare Shield	<b>JBR</b> Brass In-Grade Architectural Junction Box
	<b>24L-45</b> 45W, 5,000 lm										<b>4K7</b> 4000K, 70 CRI	<b>MF</b> Medium Flood	<b>347</b> 347V	<b>S<sup>2</sup></b> Slipfitter Knuckle	<b>DBS</b> Dark Bronze Gloss Smooth	<b>NXW<sup>2</sup></b> NX Networked Wireless Radio Module NXRM2 and Bluetooth Programming, without Sensor		<b>JBR30</b> Composite In-Grade Architectural Junction Box
<b>KFL2</b> Flood	<b>24L-70</b> 70W, 7,000 lm	<b>5K7</b> 5000K, 70 CRI	<b>WF</b> Wide Flood	<b>480</b> 480V		<b>DBT</b> Dark Bronze Matte Textured	<b>DMX<sup>3</sup></b> DMX		<b>PT</b> Post Top Mount									
	<b>40L-90</b> 90W, 10,000 lm	<b>5K8</b> 5000K, 80 CRI	<b>HF</b> Horizontal Flood			<b>GTT</b> Graphite Matte Textured			<b>PT2</b> Twin Post Top Mount									
	<b>60L-135</b> 135W, 15,000 lm		<b>VF</b> Vertical Flood			<b>LGS</b> Light Grey Gloss Smooth			<b>J-27N</b> Surface Mount									
<b>KFL3</b> Flood	<b>80L-175</b> 175W, 20,000 lm					<b>LG T</b> Light Grey Matte Textured			<b>SM18</b> Stanchion Mount									
		<b>RGBW</b> Red, Green, Blue, White (5700K)	<b>NS</b> Narrow Spot			<b>PSS</b> Platinum Silver Gloss Smooth			<b>SPM</b> Side Pole Mount									
		<b>RGBWW</b> Red, Green, Blue, Warm White (2700K)	<b>SP</b> Spot			<b>VGT</b> Verde Green Matte Textured			<b>JB1</b> Architectural Junction Box									
<b>KFL1</b> Flood RGBW	<b>6L-8</b> 8W		<b>N</b> Narrow			<b>WHS</b> White Gloss Smooth			<b>WM</b> Wall or Ceiling Mount									
<b>KFL2</b> Flood RGBW	<b>11L-15</b> 15W		<b>M</b> Medium			<b>WHT</b> White Matte Textured			<b>WM1</b> Wall Mount									
<b>KFL3</b> Flood RGBW	<b>11L-35</b> 35W		<b>MF</b> Medium Flood			<b>CC<sup>4</sup></b> Custom Color			<b>KFL3 &amp; RGBW MODELS</b>									
	<b>33L-75</b> 75W		<b>HF</b> Horizontal Flood						<b>M2B</b> Twin Mount Tenon									
			<b>VF</b> Vertical Flood						<b>M3E</b> Triple Mount Tenon									
									<b>SPT</b> Side Pole Mount Tenon									
									<b>SM2</b> Stanchion Mount Tenon									
									<b>SMT</b> Surface Mount Tenon									
									<b>WM2</b> Wall Mount Tenon									

<sup>1</sup> Not for RGBW  
<sup>2</sup> For size 3 only  
<sup>3</sup> For RGBW models only  
<sup>4</sup> Consult factory for custom color, marine and corrosive finish options

**Current** 

**Current Lighting Solutions, LLC**

701 Millennium Blvd.  
Greenville, SC 29607

**[currentlighting.com/kimlighting](https://currentlighting.com/kimlighting)**

© 2022 HLI Solutions, Inc. All rights reserved. Information and specifications subject to change without notice.  
All values are design or typical values when measured under laboratory conditions.

Rev 07/05/22

**kl\_kfl\_fit\_R03**

---