



PURSUIT™

LINEAR WITHOUT
LIMITATION

SURFACE,
PENDANT &
RECESSED

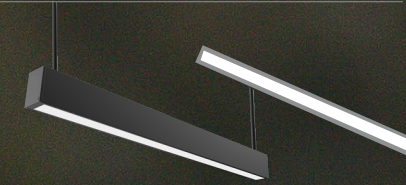
KIM LIGHTING

Current 

PURSUIT™

SURFACE, PENDANT
& RECESSED

LINEAR WITHOUT LIMITATION





LOW PROFILE

Whether installed on a surface, pendant mounted or recessed, Pursuit's low profile linear form factor seamlessly blends with the architecture - day or night.

IP66 Rated for demanding environments including protection from dust, oil, non-corrosive material and water intrusion.

PURSUIT™ & PURSUIT RECESSED

FEATURES

Individual housing lengths can be connected with external lens for seamless and continuous runs up to 150' to meet a variety of applications.

01

IP66 Rated exterior linear luminaire

02

Five housing lengths

03

Housings can be connected to form an uninterrupted ribbon of light up to 150'

04

Direct and Recessed Housing

05

Illuminated modules available to form custom shapes

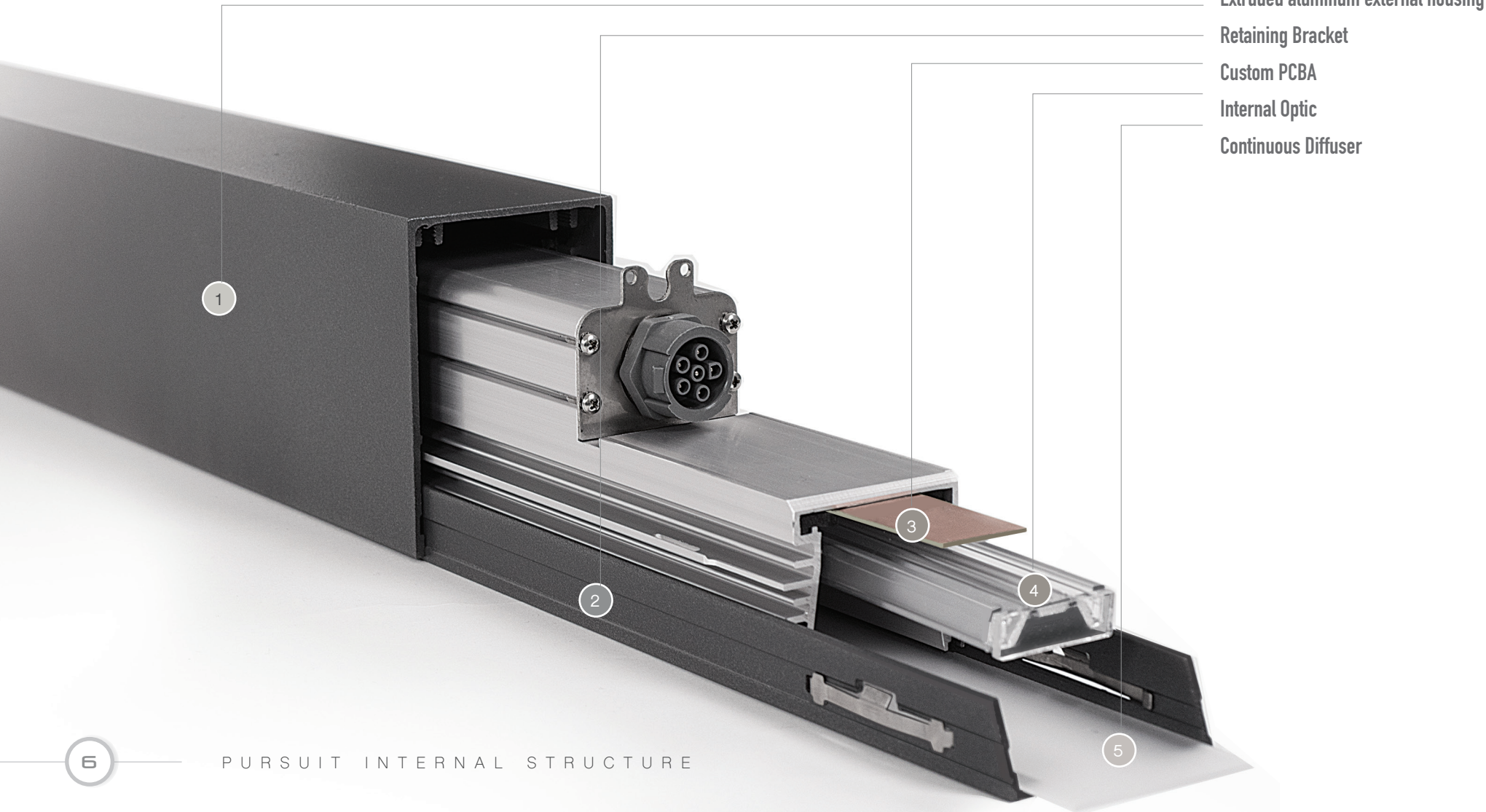
06

Broad offering of mounting options

IP66 rating for Direct and Recessed mounting configuration only.

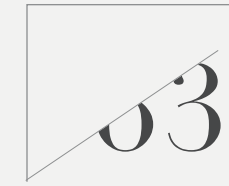
DESIGN

EXCELLENCE



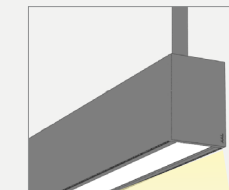
6

PURSUIT INTERNAL STRUCTURE



OPTICAL
SYSTEM

DOWNLIGHT



DIMENSIONS

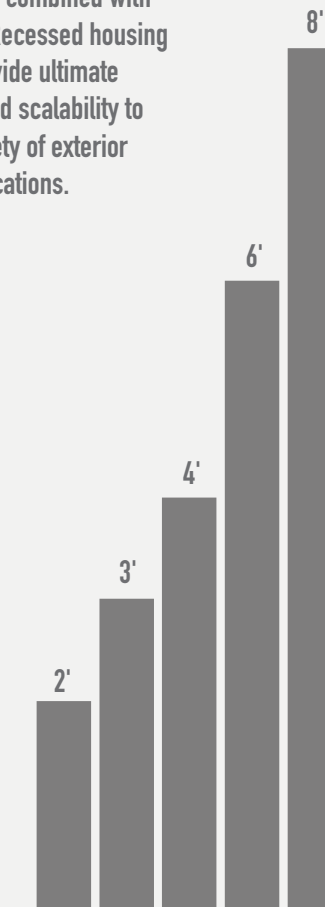
W
2.55"/65mm

H
3.65"/93mm



HOUSING
LENGTHS

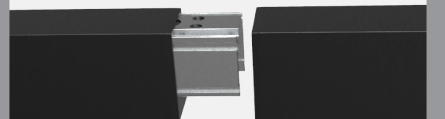
Five lengths combined with Direct and Recessed housing options provide ultimate flexibility and scalability to meet a variety of exterior linear applications.



CONNECTION

Individual housing lengths can be connected with external lens for seamless and continuous runs up to 150' to meet a variety of applications.

Water tight IP68 end to end internal connections



Continuous Diffuser

7

DISTRIBUTIONS

DESIGN WITHOUT CONSTRAINT

Four distributions and four lumen outputs up to 1,500 lm/ft enable high performance design freedom.



DIRECT - RECESSED

01

Asymmetric
Pathway Lighting

02

Wall Graze
Texture Wall

03

Symmetric
Ambient/
Suspended

04

Wall Wash
Wall Washing
Away From
the Wall Non
Textured Wall

01. Asymmetric Down | 02. Wall graze Down | 03. Symmetric Down | 04. Wall Wash Down

MOUNTING
OPTIONS

PURSUIT

- Pendant
- Cable
- Surface
- Mullion
- Wall
- Fixed Arm
- Adjustable Arm

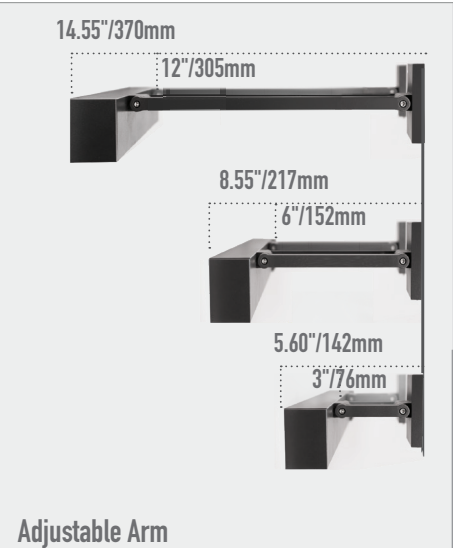
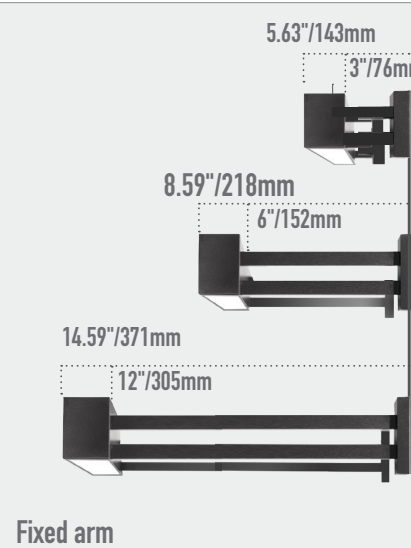
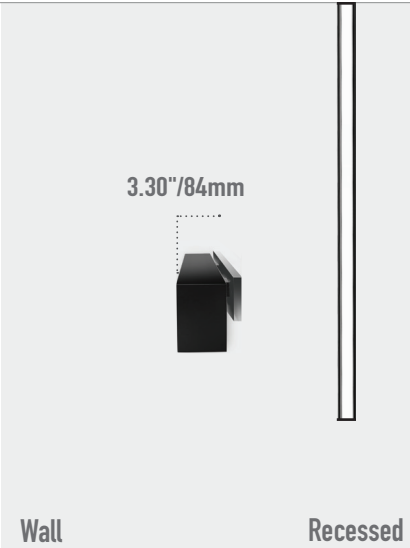
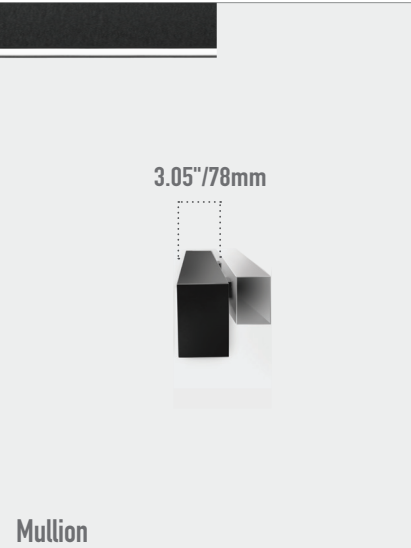
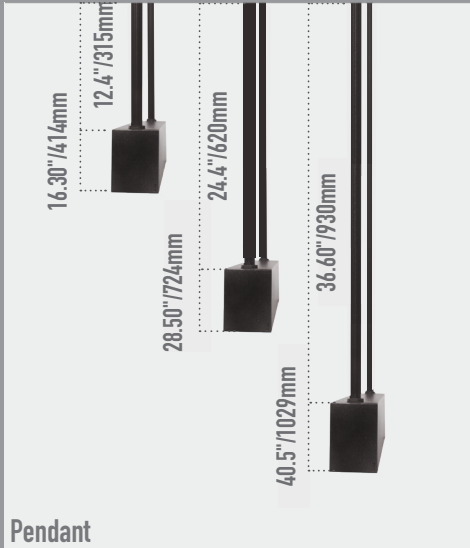
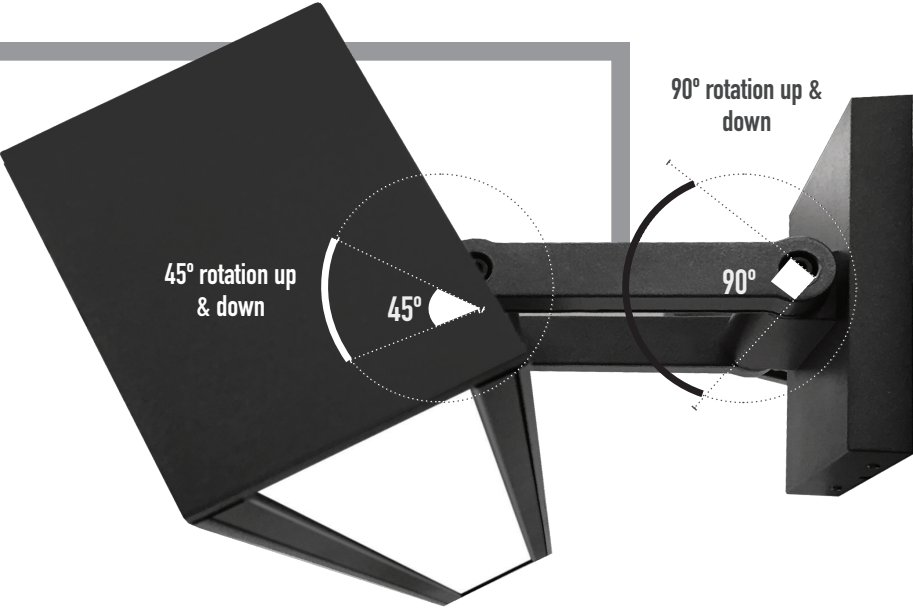
RECESSED

- Ceiling
- Wall



AIMING

Direct housing cannot be aimed up or installed inverted.





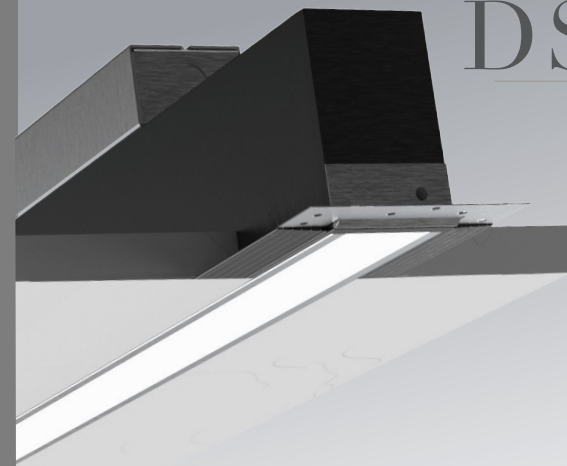
PURSUIT™

RECESSED

The Pursuit Recessed expands the family to include three recessed mounting options: Spackle, Flanged and Flangeless. These options offer three distinct aesthetic looks for design freedom.

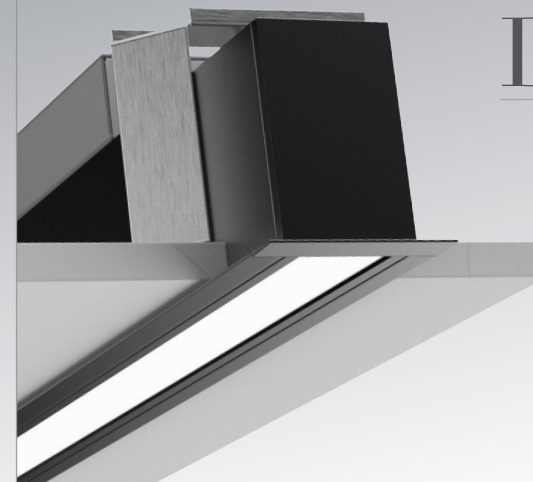


PURSUIT RECESSED



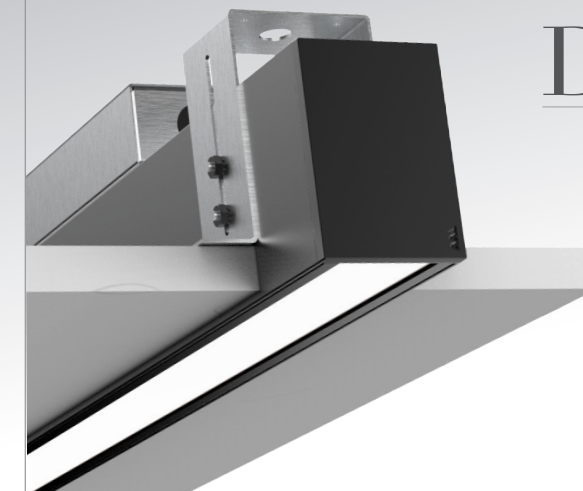
DS DRYWALL SPACKLE FLANGE

The spackle mount is used in applications for drywall ceilings or walls. Flange is hidden with spackle for clean elegant appearance.



DF DRYWALL FLANGE

The flanged mounting option covers imperfect cuts in the ceiling or wall.



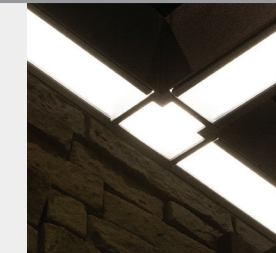
D FLANGELESS

The flangeless mounting option requires precise preparation of the wall or ceiling for a seamless installation. Fixture housing can be painted to match or be painted a contrasting color.

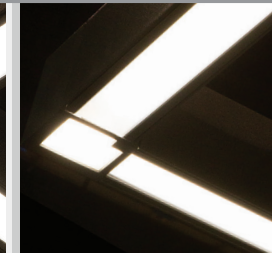
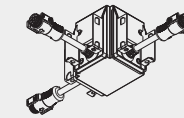
CONNECTOR

DYNAMIC LINEAR

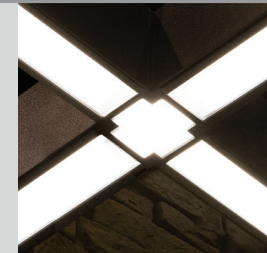
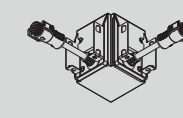
Illuminated "L", "T" and "X" modules allow creation of custom shapes or to follow and highlight architectural details for dramatic effects.



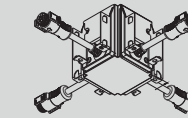
DIRECT
RNLTX-T



DIRECT
RNLTX-L



DIRECT
RNLTX-X





NX LIGHTING
CONTROLS

Current Control Solutions' NX lighting controls platform utilizes a Distributed Network Architecture (DNA) that connects intelligent devices including luminaires, controllers, panels, occupancy sensors, photocells, wall switches and dimmers, creating a system with an unmatched level of reliability, scalability and simplicity



CONTROL
INTEGRATION

CONTROL OPTIONS

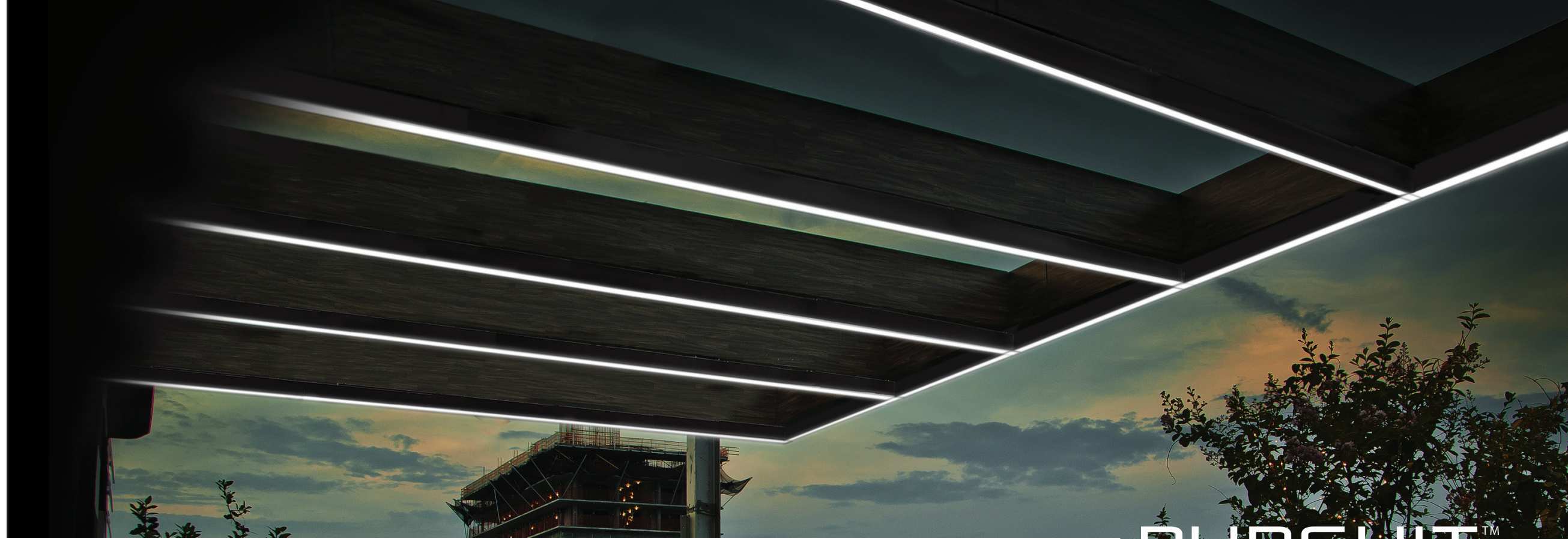
- SCP Dim Occupancy Sensor
- NXWE* NX Networked Wireless Radio Module, without Sensor
- NXOSW* NX Networked Wireless Radio Module and Integral NXSMP-OMNI-0 PIR Occupancy Sensor with Automatic Dimming Photocell and Bluetooth Programming

* Not with PC

PHOTOCELL
OPTIONS

- PC Button Photocell





PURSUIT™

FLUSHED
SURFACE MOUNT





RECESSED

The IP66 rating allow the fixture to be wall mounted in a vertical orientation.

IP66 rating for Direct and Recessed mounting configuration only.



PURSUIT™ RECESSED

The Pursuit Recessed allows a linear run from outside to inside for seamless lighting effect.

IP66

DIRECT			
LIGHT ENGINE	RUN LENGTH	MAX SECTION LENGTH	
D Direct	Manual input (150' max length – round up to nearest whole foot)	2	2' Housing
		3	3' Housing
		4	4' Housing
		6	6' Housing
		8	8' Housing
OUTPUT	CCT/CRI	DISTRIBUTIONS	
3	300 lumen/ft*	27K8 – 2700K, 80 CRI	SM Symmetric
5	500 lumen/ft	27K9 – 2700K, 90 CRI	AS Asymmetric
7	750 lumen/ft	3K7 – 3000K, 70 CRI	WG Wall Graze
10	1000 lumen/ft	3K8 – 3000K, 80 CRI	WW Wall Wash
15	1500 lumen/ft	3K9 – 3000K, 90 CRI	
* Consult factory for additional details	35K8 – 3500K, 80 CRI		
	35K9 – 3500K, 90 CRI		
	4K7 – 4000K, 70 CRI		
	4K8 – 4000K, 80 CRI		
	4K9 – 4000K, 90 CRI		
	5K7 – 5000K, 70 CRI		
	5K8 – 5000K, 80 CRI		
	5K9 – 5000K, 90 CRI		
SHIELDING	VOLTAGE	MOUNTING	
DL Diffuse lens	UNV 120–277V	W	Wall
CL Clear lens	347 347V	A3	3" Adjustable arm
	480 480V	A6	6" Adjustable arm
		A12	12" Adjustable arm
		F3	3" Fixed arm
		F6	6" Fixed arm
		F12	12" Fixed arm
		M	Mullion
		S	Surface
		PSW12	12" Pendant
		PSW24	24" Pendant
		PSW36	36" Pendant

FINISH		OPTIONS	
BLS	Black Gloss Smooth	EMF1	End Power Feed at one end
BLT	Black Matte Textured	EMF2	End Power Feed at both ends
DBS	Dark Bronze Gloss Smooth	Photocell Options	
DBT	Dark Bronze Matte Textured	PC	Button Photocell ⁽¹⁾
GTT	Graphite Matte Textured	Control Options—Not with PC ⁽¹⁾	
LGS	Light Grey Gloss Smooth	SCP	Dim Occupancy Sensor
LGT	Light Grey Matte Textured	NXWE	NX Networked Wireless Radio Module, without Sensor
PSS	Platinum Silver Gloss Smooth	NXOSW	NX Networked Wireless Radio Module and Integral NXSMP–OMNI–O PIR Occupancy Sensor with Automatic Dimming Photocell and Bluetooth Programming
VGT	Verde Green Matte Textured		
WHS	White Gloss Smooth		
WHT	White Matte Textured		
COLOR OPTION			
CC	Custom Color ⁽³⁾		
		Emergency Battery Option	
		EM	Battery Backup Unit (–20°C) ⁽²⁾
NOTES			
⁽¹⁾ Requires auxiliary housing. Fixture length will increase.			
⁽²⁾ Integral battery backup for 3, 4, 6 and 8 foot versions only. Not available on 2' housing.			
ACCESSORIES			
Connector Shape	Connector Shape	Connector Shape	
RNLTX–L–D	RNLTX–T–D	RNLTX–X–D	
Direct L Shape	Direct T Shape	Direct X Shape	

LIGHT ENGINE	OUTPUT	COLOR TEMP	
D	3	300 lumen/ft*	27K8 – 2700K, 80 CRI
	5	500 lumen/ft	27K9 – 2700K, 90 CRI
	7	750 lumen/ft	3K7 – 3000K, 70 CRI
	10	1000 lumen/ft	3K8 – 3000K, 80 CRI
	15	1500 lumen/ft	3K9 – 3000K, 90 CRI
	* Consult factory for additional details		35K8 – 3500K, 80 CRI
			35K9 – 3500K, 90 CRI
			4K7 – 4000K, 70 CRI
			4K8 – 4000K, 80 CRI
			4K9 – 4000K, 90 CRI
			5K7 – 5000K, 70 CRI
			5K8 – 5000K, 80 CRI
			5K9 – 5000K, 90 CRI
SHIELDING	VOLTAGE	FINISH	
DL Diffuse lens	UNV 120–277V	BLS	Black Gloss Smooth
CL Clear lens	347 347V	BLT	Black Matte Textured
	480 480V	DBS	Dark Bronze Gloss Smooth
		DBT	Dark Bronze Matte Textured
		GTT	Graphite Matte Textured
		LGS	Light Grey Gloss Smooth
		LGT	Light Grey Matte Textured
		PSS	Platinum Silver Gloss Smooth
		VGT	Verde Green Matte Textured
		WHS	White Gloss Smooth
		WHT	White Matte Textured
COLOR OPTION			
		CC	Custom Color ⁽³⁾
NOTES			
* The top of the connectors are not lit.			

ORDERING INFORMATION

NOTES

- ¹ 480V not available
- ² Consult factory for additional CCT options
- ³ Requires auxiliary housing. Fixture length will increase
- ⁴ Integral battery backup for 3, 4, 6 and 8 foot versions only.
Not available on 2' housing
- ⁵ Consult factory for custom color, marine and corrosive finish options



Current - HLI Brands

701 Millennium Blvd.
Greenville, SC 29607

currentlighting.com/kimlighting

© 2024 HLI Solutions, Inc. All rights reserved. Information and specifications subject to change without notice. All values are design or typical values when measured under laboratory conditions.

(Rev 01/09/24)

kl_pursuit_lit_R02
