

Wall Director

KIMLIGHTING

Current 

Wall Director

The next generation Wall Director is the evolution of the Kim Classic. The timeless design has been refined to a smaller profile luminaire while being true to the simple flowing lines and architectural shape. Wall Director offers high performance IES distributions, high comfort diffused lens option, integral controls, and battery backup.

iconic form

superior functionality



Wall Director

The Wall Director is available in two sizes with two mounting configurations and nine distributions. This combined with performance optics, full cutoff and adjustability embodies the ultimate architectural wall luminaire.



IES

distributions

The Wall Director offers a wide variety of distinct distribution patterns to illuminate ground surfaces and architectural features, providing dramatic lighting effects or general perimeter illumination.



Type I
Concentrated wide pattern provides targeted illumination for applications requiring high light levels over narrow pathways and sidewalks.

Type II
For downward-facing applications, Type II is ideal for service areas behind buildings, alleys, shopping malls, arcades and pathways next to structures. For upward-facing applications it is meant for narrower overhangs and building projections.

Type III
For downward-facing applications, Type III is normally used in conjunction with parking lot lighting to fill in areas between the building and where pole mounted parking lot illumination falls off. For upward-facing applications, overhangs, canopies and ceilings are ideal.

Type IV Forward
Maximum forward throw distribution. For downward-facing applications, this forward throw distribution is useful where pole mounted luminaires would pose an obstruction to cars or trucks. Also useful for upward-facing applications, curved or sloped ceilings and canopies.

Type IV Wide
Forward throw distribution without sacrificing lateral throw. For downward-facing applications, this forward throw distribution is useful where pole mounted luminaires would pose an obstruction to cars or trucks. Also useful for up facing applications, curved or sloped ceilings and canopies.



architectural flood

distributions

The Wall Director offers two architectural flood distributions for creating dazzling nighttime lighting effects.

Wall Graze

Intended for illuminating building facades with interesting surface textures, reliefs, projections or other embellishments, the wall graze distribution can produce dramatic night time effects. For downward-facing, the Wall Grazer can be used to provide increased security lighting for building perimeters.



Column

For upward-facing applications, the spot/column distribution can be used to highlight and accentuate small architectural surface detail, columns or pilasters with laser-like accuracy. In downward-facing applications, it is used to accentuate points of entry or highlight perimeter landscape detail.



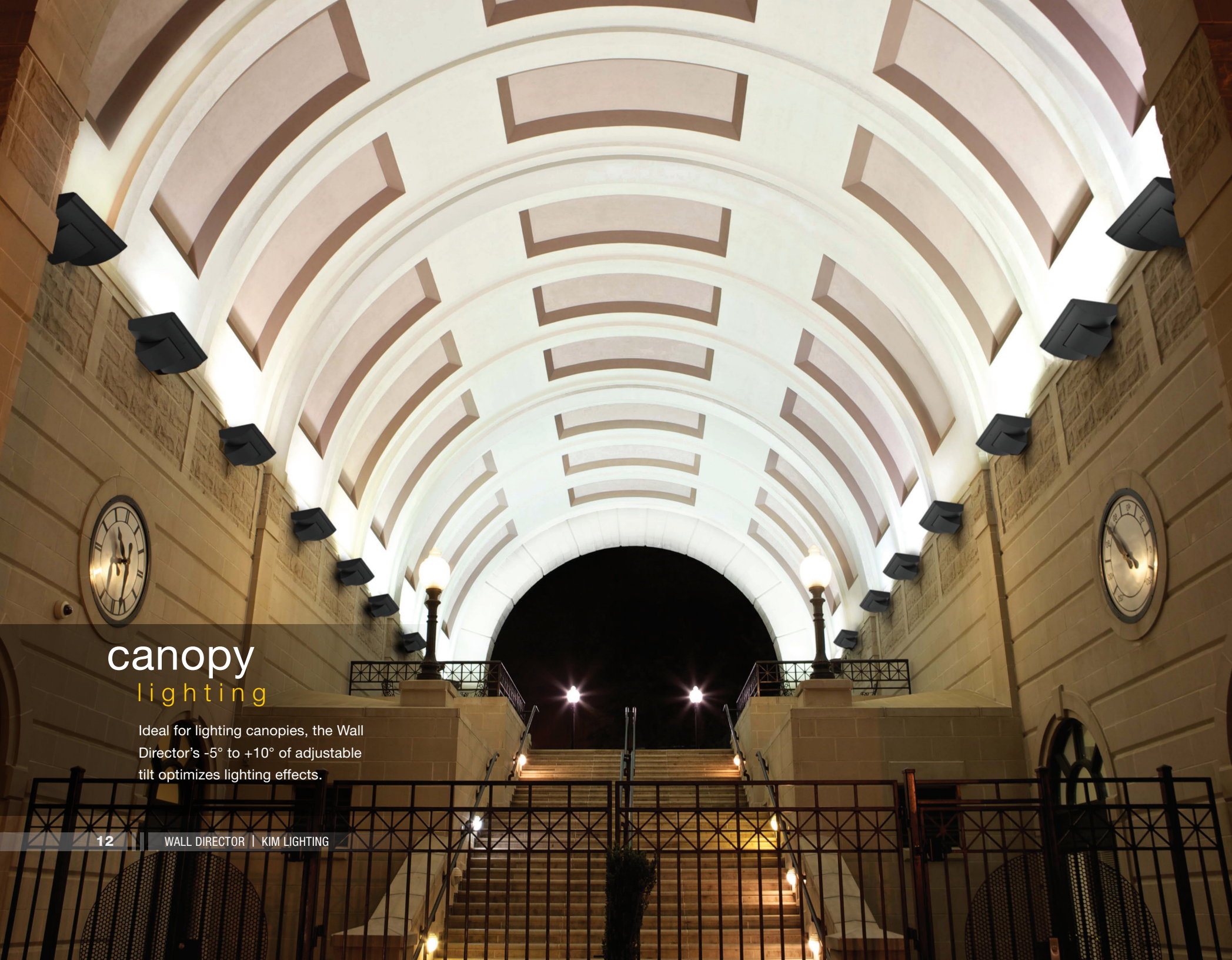
visual comfort

Wall Director offers world-class photometric performance and uniformity with diffuse and clear lens options. The diffuse lens offers exceptional performance and a higher degree of comfort. The clear lens offers superior performance providing the extra punch required for large scale architectural applications and general illumination.

Wall Director lumen output ranges from 3,000 to 17,000 lumens providing the ideal output for any application.

Diffuse

Clear



canopy lighting

Ideal for lighting canopies, the Wall Director's -5° to $+10^{\circ}$ of adjustable tilt optimizes lighting effects.

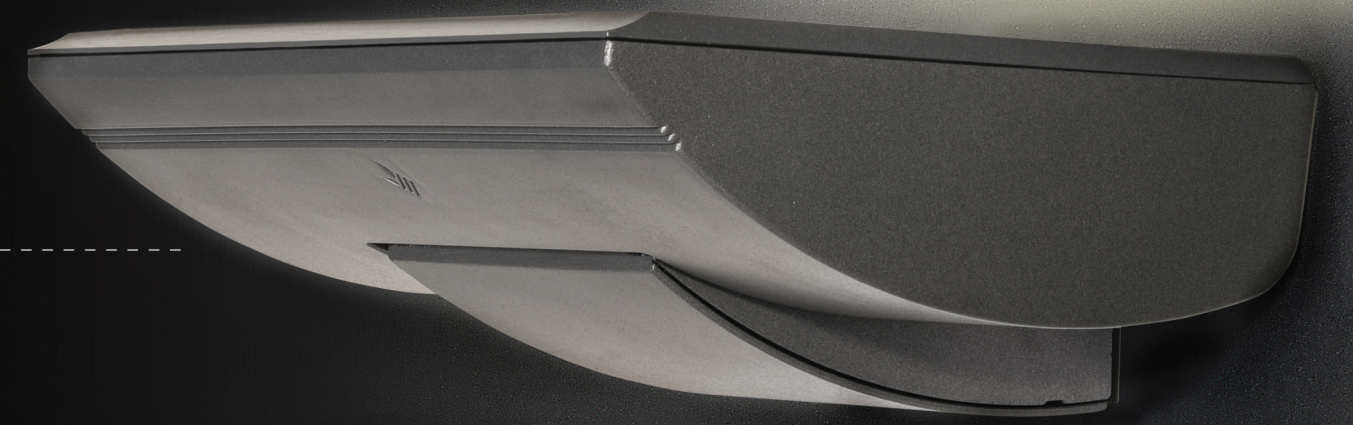
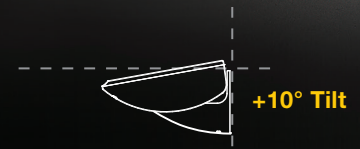
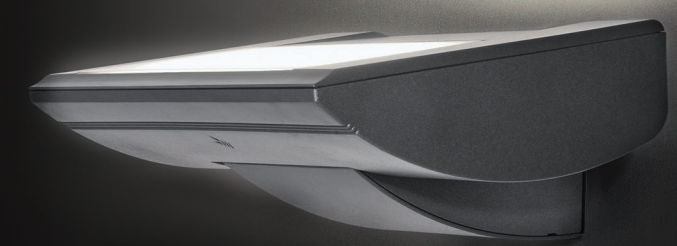


engineering excellence

The Wall Director is designed to the highest standards of excellence and quality with attention to the finest detail.

- -5 to +10 degrees tilt feature offers easy, precise onsite adjustments.
- Full cut off optical performance in the down position.
- Luminaire can be field installed in an up or down mount orientation.
- All die cast housings are constructed with low copper alloy aluminum for superior durability.
- Stainless steel hardware used throughout.
- One piece molded gaskets enable an IP66 rated optical compartment and assure optical integrity over time.

The Wall Director offers an easy, field-adjustable tilt feature built into the luminaire. The aiming can be fine-tuned by tightening or loosening the set screw allowing -5 to +10 degrees of tilt.





control options

SCP Occupancy Sensor

Controls in wall mount applications save energy, extend luminaire life and allow customizable solutions. Sensors control light output based on area utilization. Use for energy savings and local code compliance.

- Programmable occupancy sensor with wireless configuration (ordered separately)
- Adjustable high/low output settings as well as time delay
- Includes photocontrol functionality.
- For mounting heights up to 20 ft.

AstroDIM

AstroDIM provides multi-stage night-time power reduction based on an internal timer referenced to the power on/off time. There is no need for an external control infrastructure. The unit automatically performs a dimming profile based on the predefined scheduled reference to the midpoint, which is calculated based on the power on/off times.

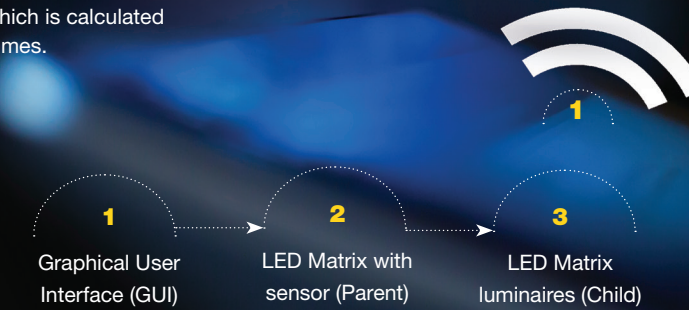
path of egress

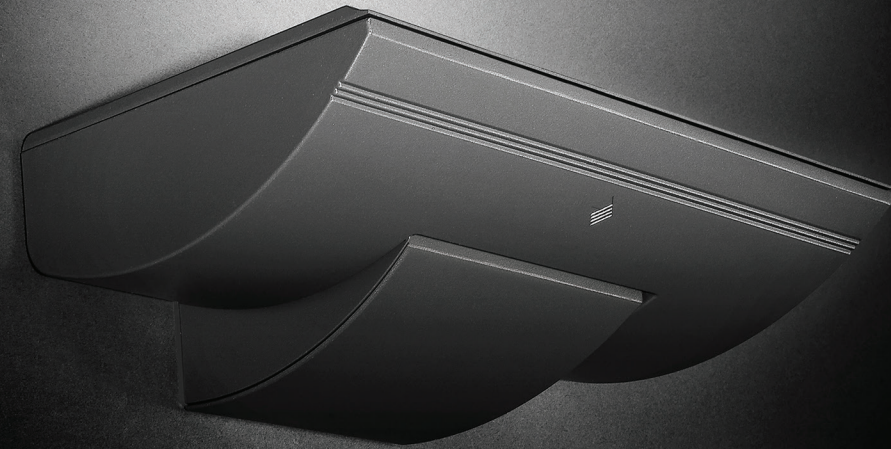
Battery Backup

Integral Battery Backup provides emergency lighting for the required 90 minute path of egress. Upon failure of the normal utility power, an LED driver is automatically activated to power the emergency LEDs. Upon resumption of normal utility power, the LED driver is turned off, and the battery is recharged.

Dual Drivers and Dual Power Feed

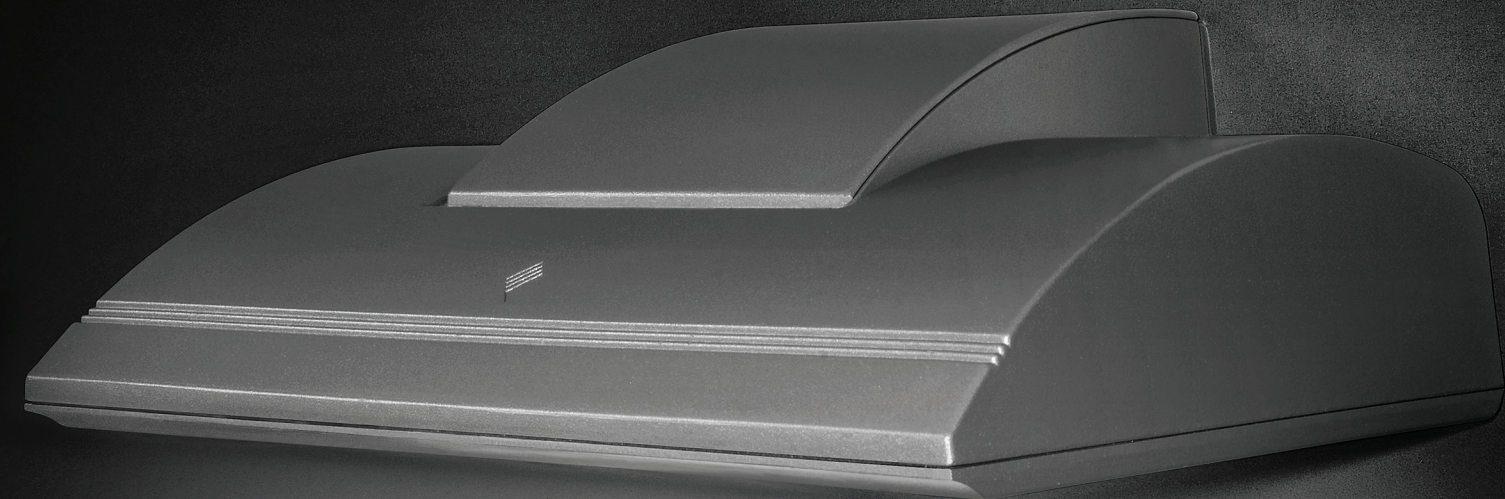
Optional Dual Drivers provide redundant power sources for reduced luminaire outages as well as local code compliance. Dual Power feeds allow for bi-level dimming as well as wiring for emergency circuits and relays.





ordering

Wall Director



WDS

MODEL	MOUNTING	SOURCE	WATTAGE	LIGHT ENGINE	DISTRIBUTION	VOLTAGE	FIXTURE FINISH	CONTROLS OPTIONS	OPTIONS	ACCESSORIES
WDS Wall Director Small	D Down U¹ Up	24L 24 LEDs	30 30 Watts 40 40 Watts 60 60 Watts 75 75 Watts	3K7 3000K/70 CRI 3K8 3000K/80 CRI 4K7 4000K/70 CRI 4K8 4000K/80 CRI 5K7 5000K/70 CRI	1 TYPE I 2 TYPE II 3 TYPE III 4W TYPE IV Wide 4F TYPE IV Forward WG² Wall Graze SP Spot/Column FTD² Forward Throw Diffuse WTD² Wide Throw Diffuse	UNV 120-277V 347³ 347V 480³ 480V	BL Black DB Dark Bronze GT Graphite LG Light Gray PS Platinum Silver TT Titanium WH White RAL RAL Color CC Custom Color	PC Button Photocell SCP-8F Programmable Occ. Sensor (<9' height) SCP-20F Programmable Occ. Sensor (9' - 20' height)	EM⁴ Internal Emergency Battery Backup SF Single Fuse & Fuse Holder DF Double Fuse & Fuse Holder	SCPRMOTE SCP configuration tool

WDM

MODEL	MOUNTING	SOURCE	WATTAGE	LIGHT ENGINE	DISTRIBUTION	VOLTAGE	FIXTURE FINISH	CONTROLS OPTIONS	OPTIONS	ACCESSORIES
WDM Wall Director Medium	D Down U¹ Up	48L 48 LEDs	55 55 Watts 65 65 Watts 85 85 Watts 105 105 Watts 130 130 Watts	3K7 3000K/70 CRI 3K8 3000K/80 CRI 4K7 4000K/70 CRI 4K8 4000K/80 CRI 5K7 5000K/70 CRI	1 TYPE I 2 TYPE II 3 TYPE III 4W TYPE IV Wide 4F TYPE IV Forward WG² Wall Graze SP Spot/Column FTD² Forward Throw Diffuse WTD² Wide Throw Diffuse	UNV 120-277V 347 347V 480 480V	BL Black DB Dark Bronze GT Graphite LG Light Gray PS Platinum Silver TT Titanium WH White RAL RAL Color CC Custom Color	PC Button Photocell SCP-8F Programmable Occ. Sensor (<9' height) SCP-20F Programmable Occ. Sensor (9' - 20' height)	EM⁴ Internal Emergency Battery backup SF Single Fuse & Fuse Holder DF Double Fuse & Fuse Holder 2DR Dual Drivers 2PF Dual Power Feeds	SCPRMOTE SCP configuration tool

Microsoft, Encarta, MSN, and Windows are either registered trademarks or trademarks of Microsoft Corporation in the United States and/or other countries.

¹ Not available with EM option or with SCP sensor options.

² WG, FTD, and WTD come with a diffused lens.

³ 60 and 75 watt versions only

⁴ Universal voltage only (120-277)

Current

Current - HLI Brands

701 Millennium Blvd.
Greenville, SC 29607

currentlighting.com/kimlighting

© 2022 HLI Solutions, Inc. All rights reserved. Information and specifications subject to change without notice. All values are design or typical values when measured under laboratory conditions.

(Rev 10/20/22)

kl_wd_lit_R02
