

**INSTALLATION INSTRUCTIONS**

FIXTURE TYPE \_\_\_\_\_

**LED COVE  
15L-CC-AI**

P/C **510591-1**

PG. 1 OF 2

DO NOT MODIFY OR ALTER THIS PRODUCT IN ANY WAY, OR INSTALL IN ANY FASHION WHICH IS CONTRARY TO THE INSTRUCTIONS CONTAINED HEREIN.  
IF YOU HAVE ANY QUESTIONS REGARDING THIS PRODUCT OR THE INSTALLATION OF IT, PLEASE CALL LITECONTROL ENGINEERING AT 781-294-0100.

GENERAL NOTES:

1. Recommended depth of cove should be 4-3/4" wide by 1-3/4" high. Use wood blocking (if necessary) to raise fixture to top of cove. Blocking is supplied by contractor. Maximum weight of fixture is 4 1/2 lbs. per foot of length.
2. Fixtures in rows must butt up against each other and be placed against wall so that light on wall will be continuous.
3. Fixtures are supplied with factory installed branch circuit wiring, refer to supplemental instructions for making wiring connections.

INSTRUCTIONS:

1. Carefully remove foam wrap from fixture.
2. Lift fixture(s) into cove and position up against wall.

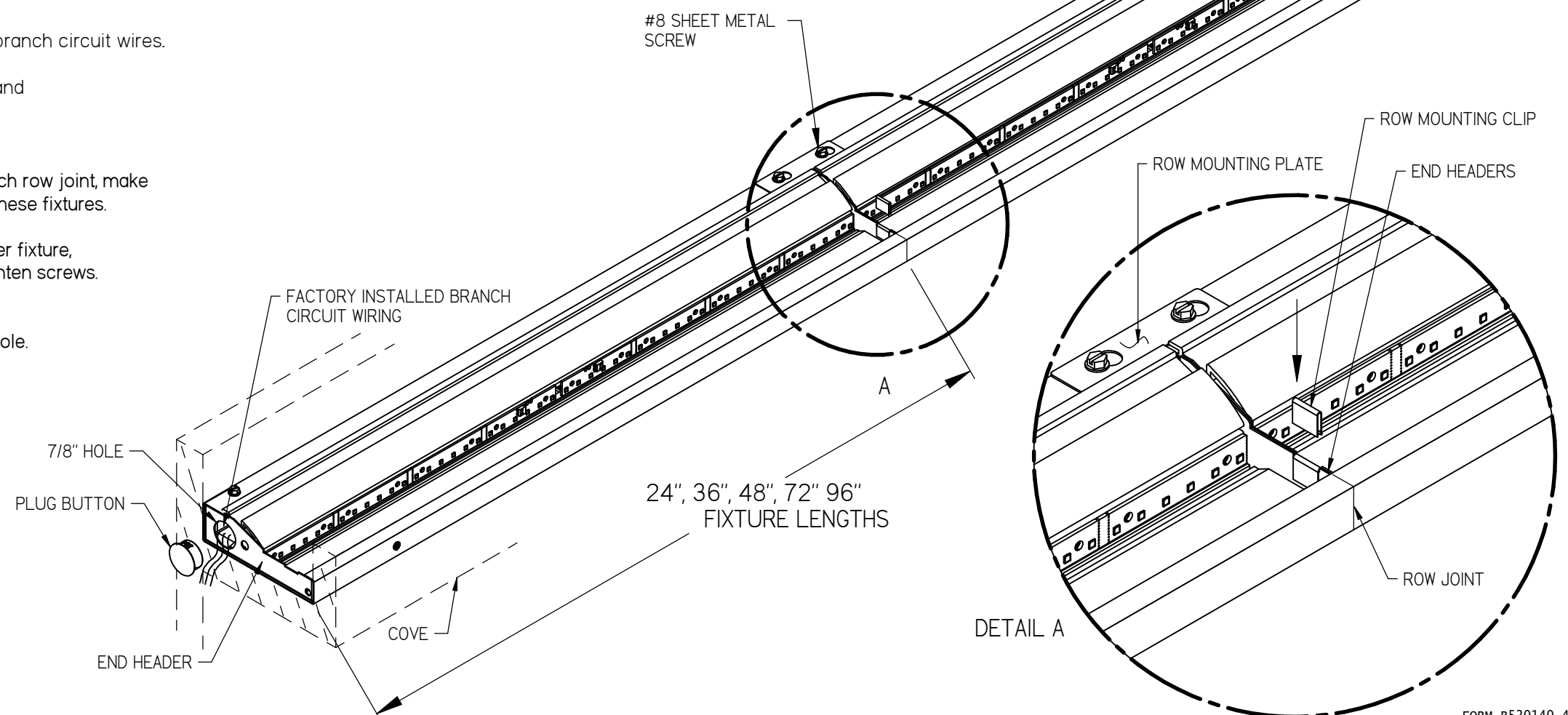
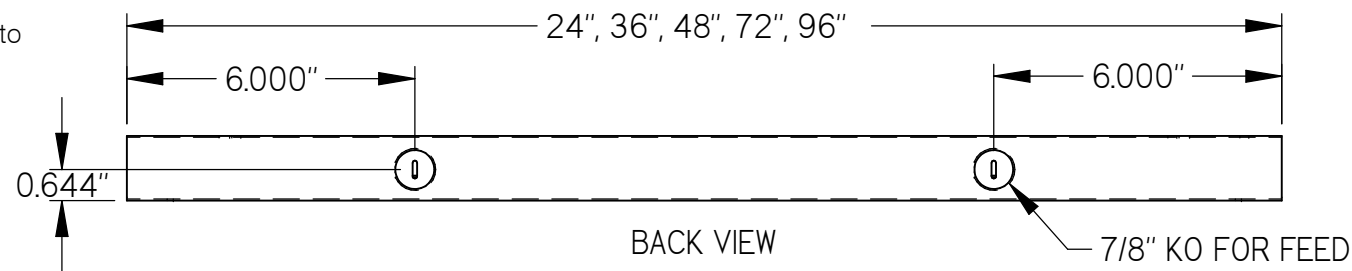
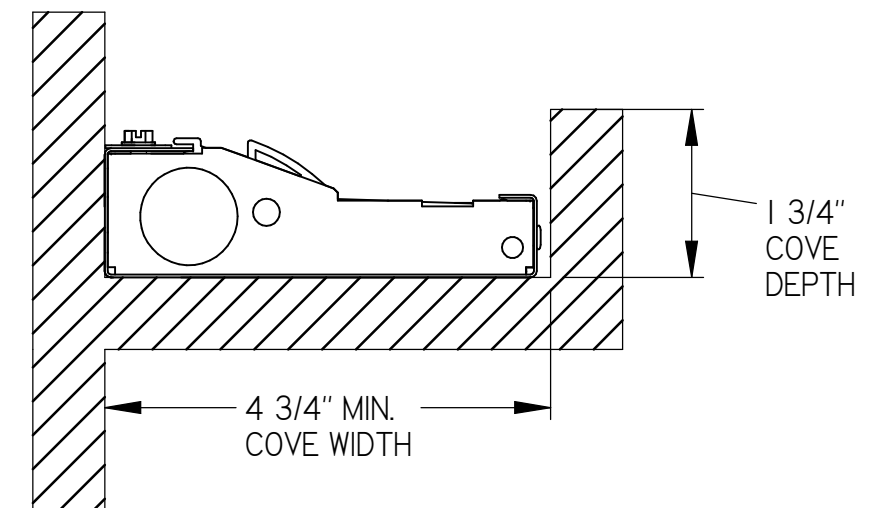
A) For individually mounted fixtures:

Bring electrical feed to one end of fixture and make connections to branch circuit wires. Push wiring connections back into 7/8" hole in fixture end header. At opposite end of fixture, cap unused leads, push back into fixture and cover 7/8" hole with plug button provided.

B) For installing fixtures in rows:

Bring electrical feed into a fixture at end of row per step A above. At each row joint, make connections to branch circuit wiring and push leads back into one of these fixtures. Snap row mounting clip over edges of both end headers at joint. Loosen Sheet Metal screw holding row mounting plate, one provided per fixture, lift up and slide over sheet metal screw in adjacent fixture too then tighten screws. Refer to detail "A". Repeat this step for each fixture in row. Cap leads at open end of last fixture and snap a plug button into 7/8" hole.

C) For fixtures with corner wiring kits, kits are shipped separately.



INSTALLATION  
INSTRUCTIONS

FIXTURE TYPE \_\_\_\_\_

LED COVE  
15L-CC-AI

P/C 510591-1

PG. 2 OF 2

DO NOT MODIFY OR ALTER THIS PRODUCT IN ANY WAY, OR INSTALL IN ANY FASHION WHICH IS CONTRARY TO THE INSTRUCTIONS CONTAINED HEREIN.  
IF YOU HAVE ANY QUESTIONS REGARDING THIS PRODUCT OR THE INSTALLATION OF IT, PLEASE CALL LITECONTROL ENGINEERING AT 781-294-0100.

**AMA OPTION:**

**GENERAL NOTES:**

A) Cove dimensions for the AMA option are shown in cross sections.

B) AMA mounting angles are attached to bottom of fixture before lifting fixture into cove.

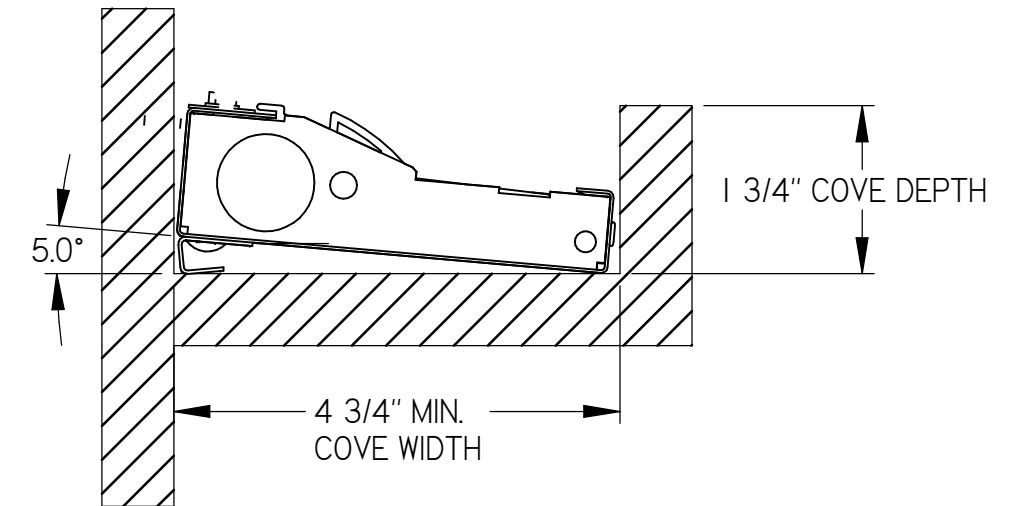
**INSTRUCTIONS:**

1) Carefully tip fixture on its side and locate hole pattern in bottom of housing at both ends of fixture. See detail.

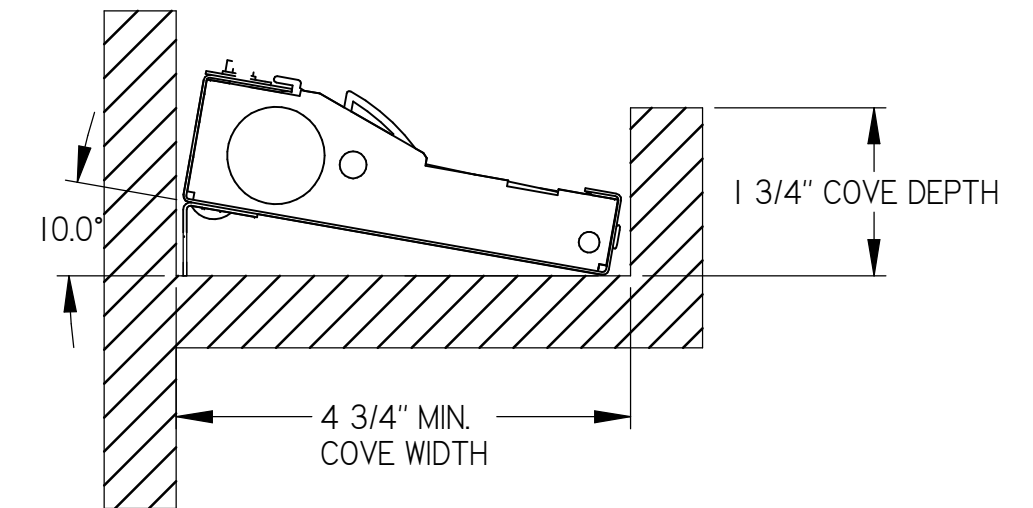
2) Position mounting angles for AMA or AMA10 option and attach angles to bottom of housing with nylon dart fastener.

Two mounting angles are required for each fixture.

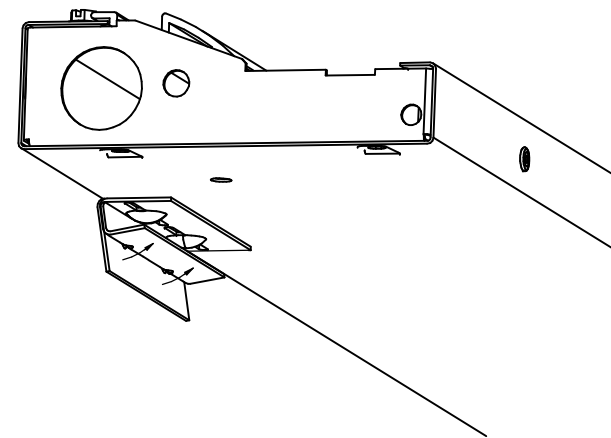
3) Hand forming is required to angles for AMA5 option only, refer to detail.



CROSS SECTION - AMA5 OPTION



CROSS SECTION - AMA10 OPTION



HAND FORM DETAIL -- AMA5 OPTION