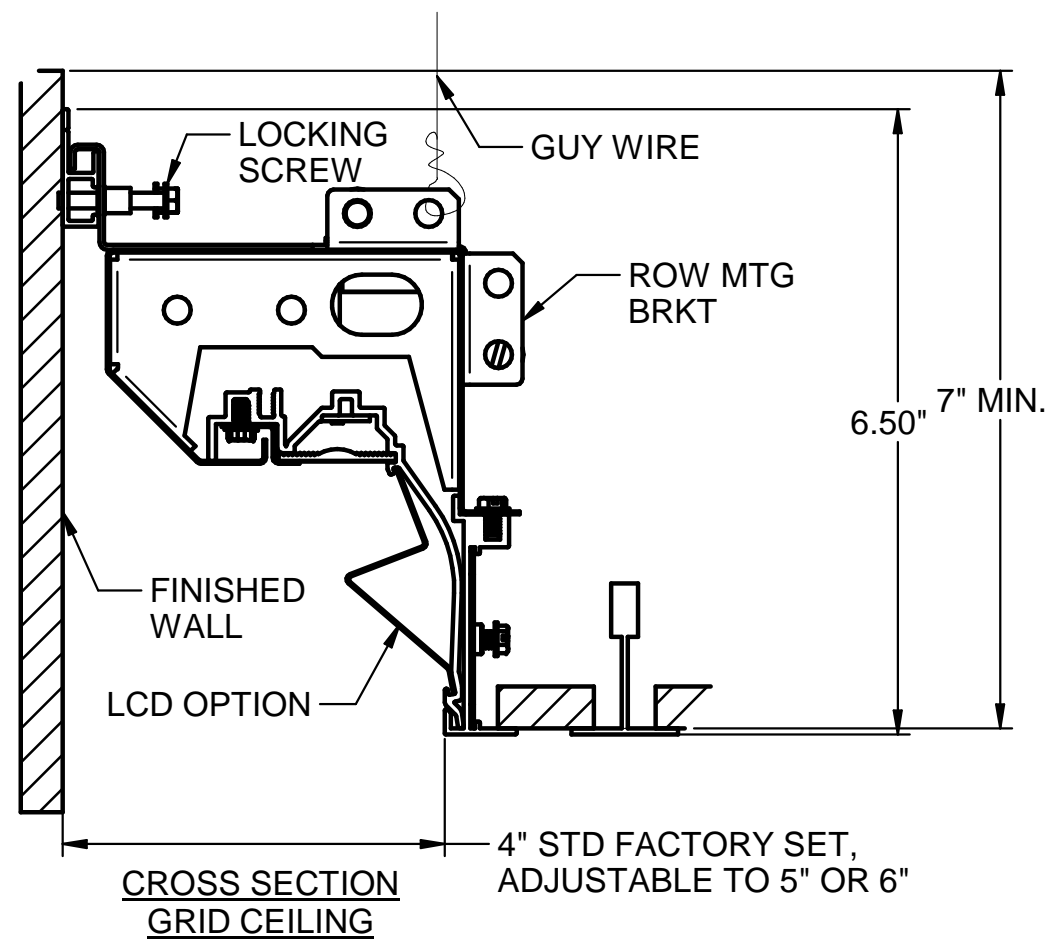
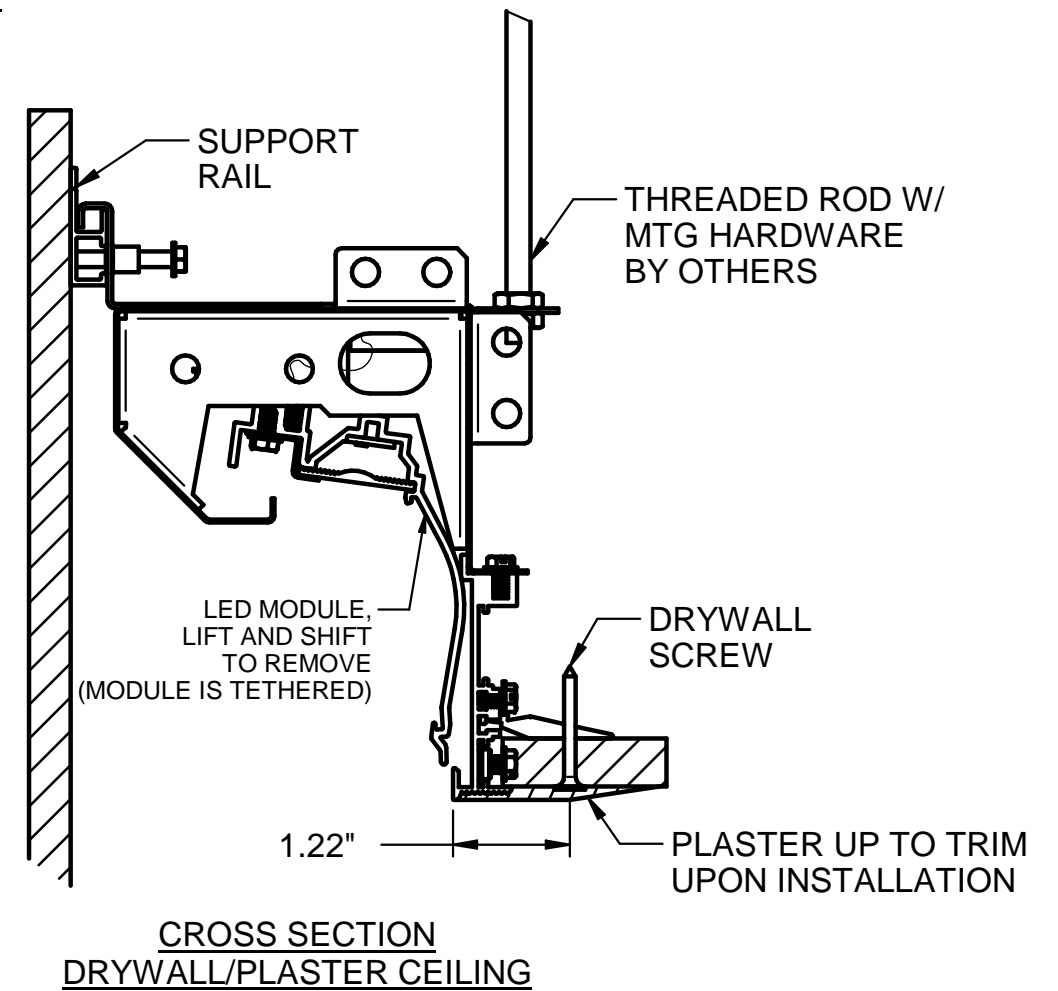


SIDE VIEW - INDIVIDUALLY MOUNTED



**CROSS SECTION
GRID CEILING**



**CROSS SECTION
DRYWALL/PLASTER CEILING**

GENERAL NOTES: (READ SHEETS COMPLETELY BEFORE STARTING)

1. LEAVE PROTECTIVE WRAPPING MATERIAL ON FIXTURE(S) UNTIL START OF INSTALLATION.
2. FIXTURE(S) MUST BE INSTALLED PRIOR TO HANGING CEILING.
3. WALL SURFACE MUST BE FINISHED A MINIMUM OF 7" ABOVE CEILING LINE.
4. ALL SUPPORT RAILS (SHIPPED SEPARATELY) MUST BE INSTALLED PRIOR TO MOUNTING FIXTURE(S). REFER TO PAGE 2.
5. FIXTURES ARE PROVIDED WITH FACTORY-INSTALLED LED MODULE ASSEMBLIES.

TOOLS REQUIRED

- SCREWDRIVER/DRILL
- 7/16" NUT DRIVER
- TAPE MEASURE
- METAL CUTTING TOOL (SAW-TYPE)
- CHALK

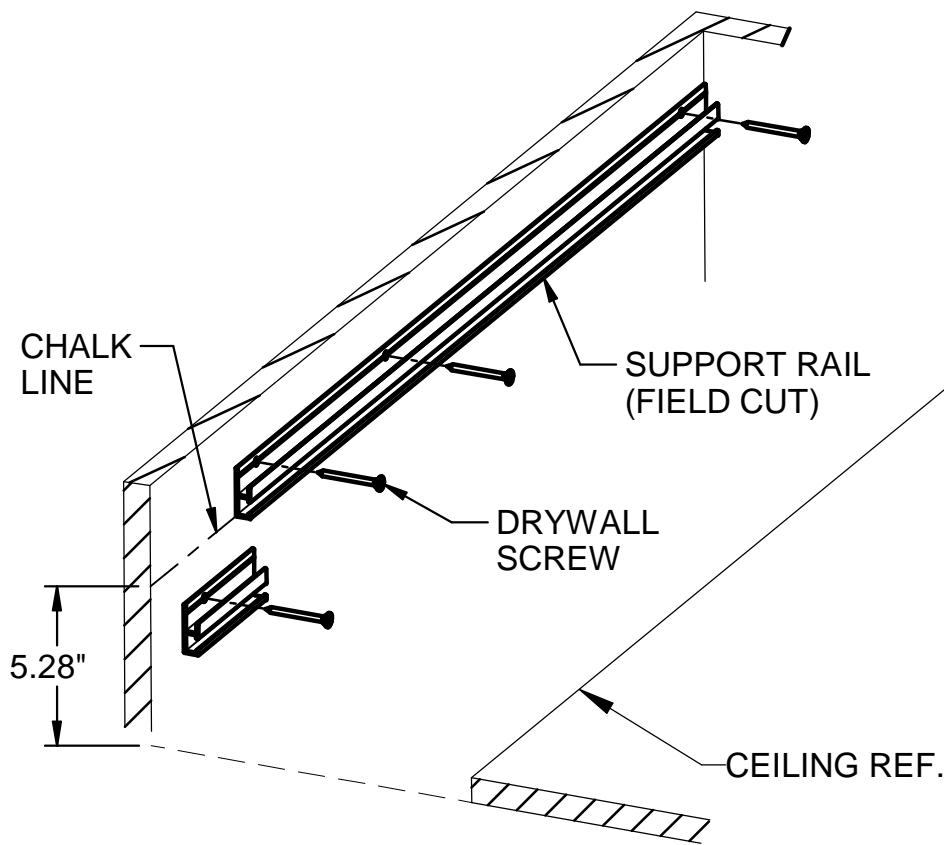
SUPPLIED BY INSTALLER

- GUY WIRES (GRID CEILING ONLY)
- THREADED RODS & MTG HARDWARE (DRYWALL PLASTER CEILING ONLY)
- SHIMS (IF NECESSARY)
- DRYWALL SCREWS

SUPPORT RAIL INSTALLATION

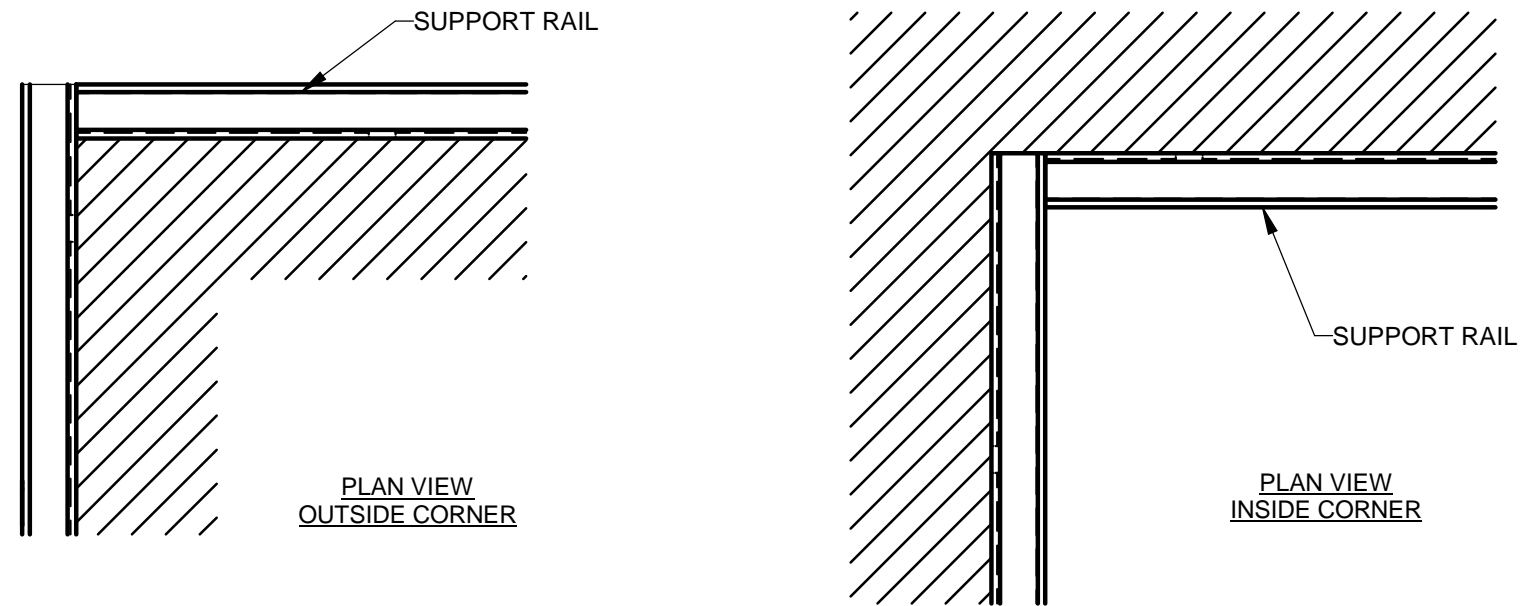
1

SUPPORT RAILS ARE SHIPPED IN 96" LENGTHS. SAWCUT TO SUIT FIELD CONDITIONS PRIOR TO MOUNTING.



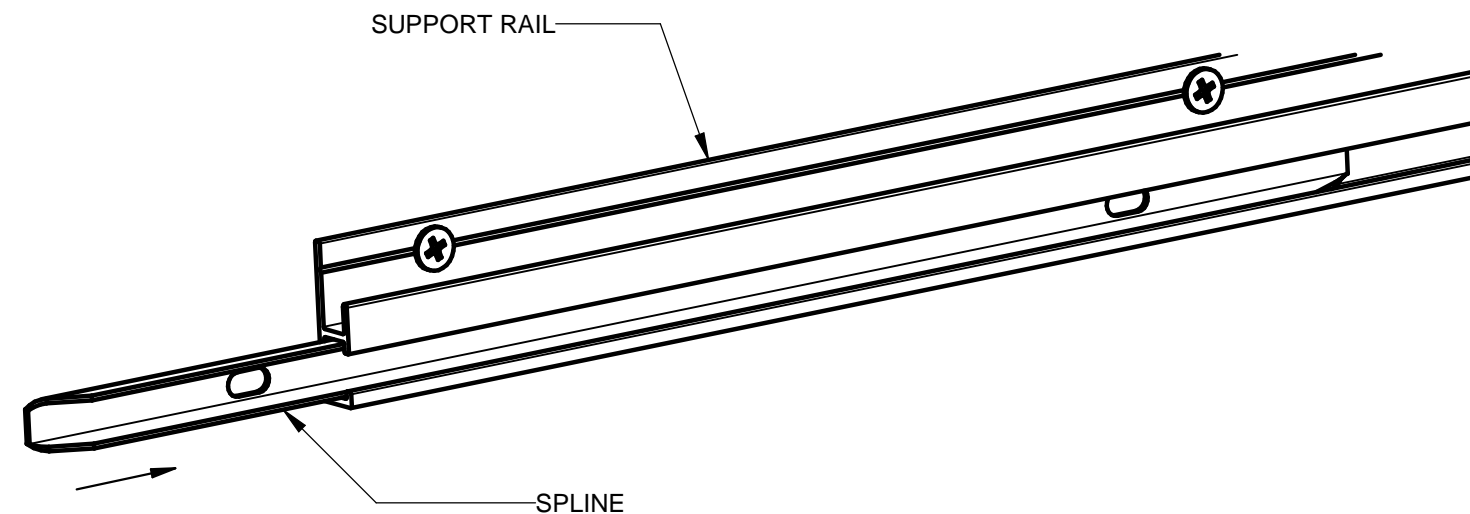
MARK LEVEL CHALK LINE AT 5.28" ABOVE CEILING ALONG FULL LENGTH OF WALL. POSITION BOTTOM EDGE OF SUPPORT RAIL ON CHALK LINE. FASTEN SUPPORT RAIL TO WALL USING DRYWALL SCREWS.

2



BUTT EDGES OF SUPPORT RAILS AT CORNERS AS SHOWN ABOVE.

3

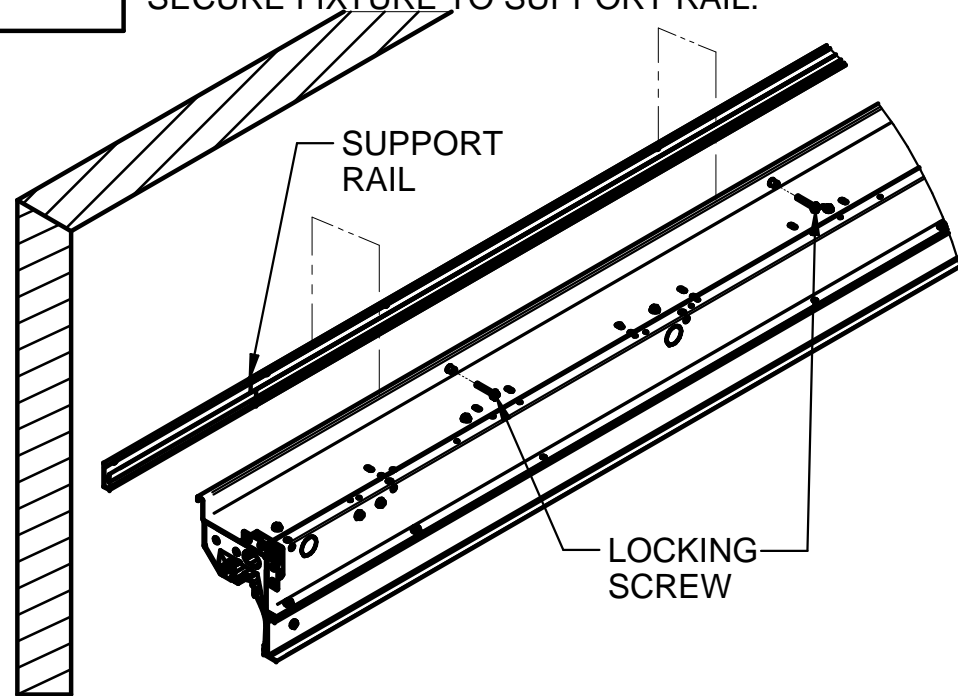


INSERT SPLINE KEYS BETWEEN ADJACENT SUPPORT RAILS AS EACH LENGTH IS ADDED. SPLINE KEYS ARE SHIPPED INSTALLED IN RAIL.

IF NECESSARY, SHIM BEHIND SUPPORT RAILS TO FORM A CONTINUOUS STRAIGHT RAIL.

1

STARTING AT THE MIDDLE OF THE ROW, INDIVIDUALLY LIFT EACH FIXTURE ONTO SUPPORT RAIL. INSERT LOCKING SCREWS AS SHOWN BELOW TO SECURE FIXTURE TO SUPPORT RAIL.



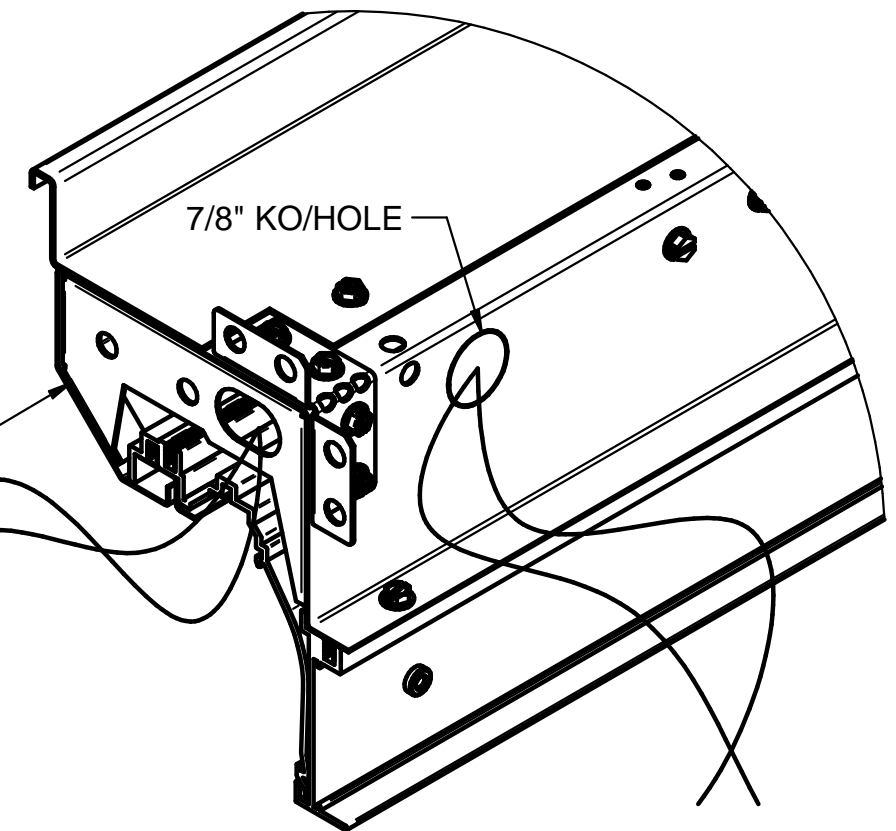
FOR GRID CEILING: ATTACH GUY WIRES (PROVIDED BY INSTALLER) FROM OVERHEAD CEILING STRUCTURE TO EACH FIXTURE AND LEVEL.

FOR DRYWALL/PLASTER CEILING: ATTACH THREADED RODS FROM OVERHEAD CEILING STRUCTURE TO EACH FIXTURE USING MOUNTING HARDWARE (BOTH PROVIDED BY INSTALLER). INSERT DRYWALL SCREW THROUGH CEILING AND INTO FIXTURE (SEE PAGE 1).

2

BRING WIRE FEED INTO DESIRED FIXTURE THROUGH HOLE IN END HEADER OR THROUGH A 7/8" KNOCK-OUT IN HOUSING BACK.

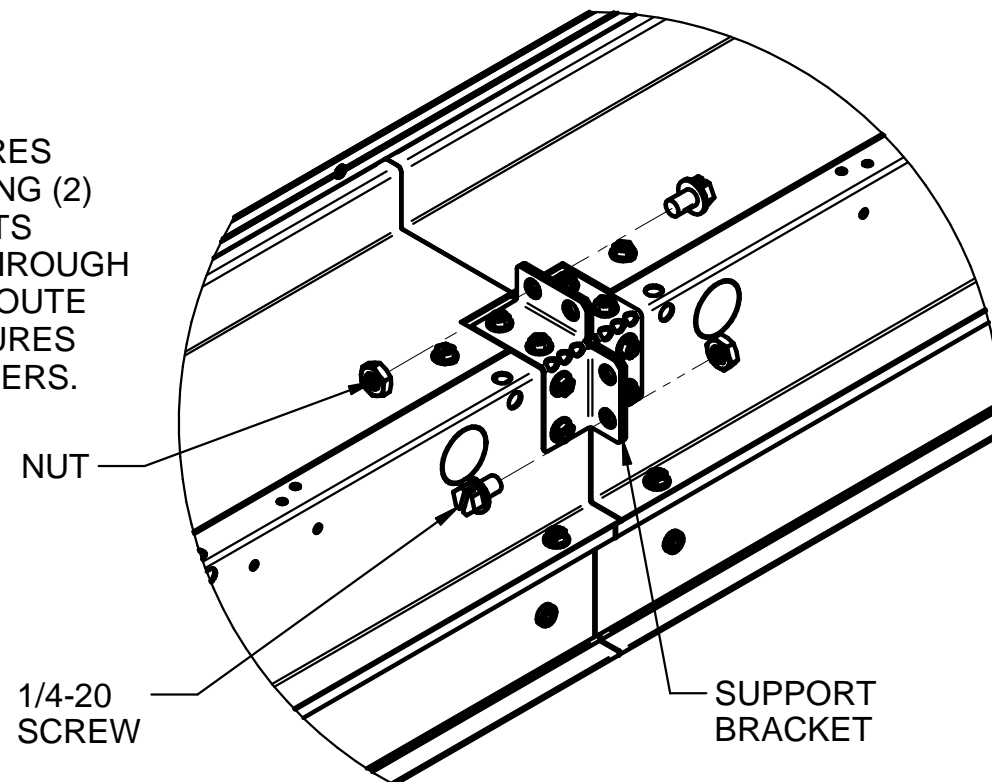
END HEADER



3

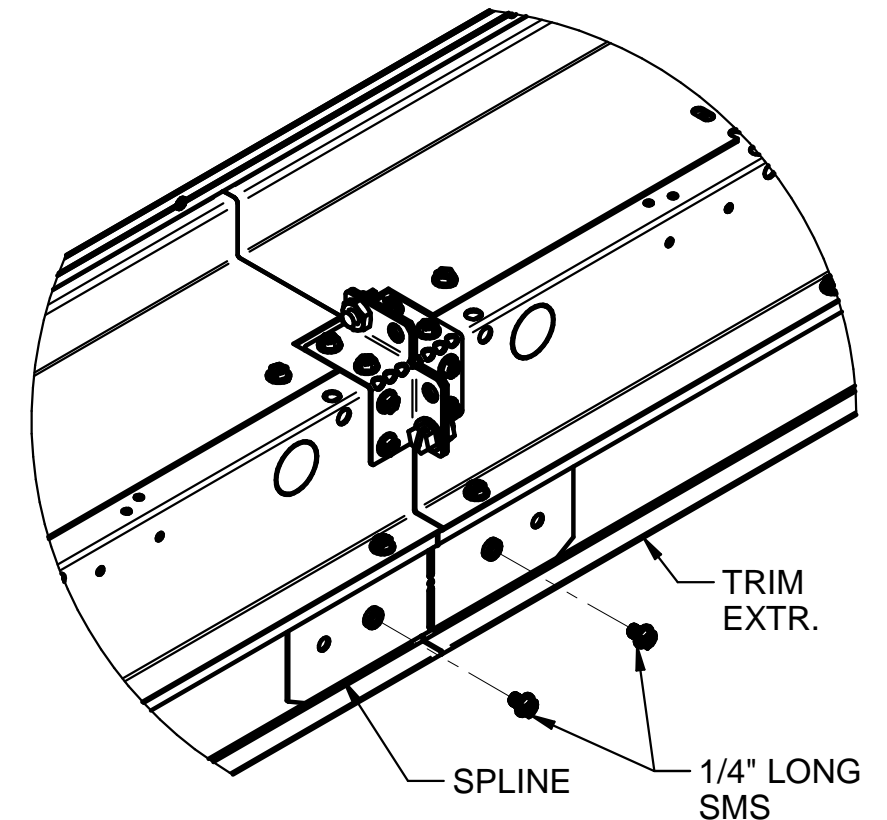
IF INSTALLING INDIVIDUAL FIXTURE, SKIP TO PAGE 3.

BOLT ADJOINING FIXTURES TOGETHER BY ATTACHING (2) 1/4-20 SCREWS AND NUTS (FOUND IN POLYBAG) THROUGH SUPPORT BRACKETS. ROUTE WIRING BETWEEN FIXTURES VIA HOLES IN END HEADERS.



4

ALIGN TRIM EXTRUSIONS AT JOINT(S) USING SPLINE (SHIPPED IN TRIM). SLIDE TRIM FROM ONE EXTRUSION INTO EXTRUSION OF ADJACENT FIXTURE. CENTER SPLINE OVER JOINT; ENSURE TRIMS BUTT AGAINST EACH OTHER. FASTEN USING (2) 1/4" LONG SHEET METAL SCREWS.



STRAIGHT EXTENSION SYSTEM CONNECTOR INSTALLATION

STRAIGHT EXTENSIONS (SE) ARE INSTALLED AT ENDS OF FIXTURE OR ROW OF FIXTURES TO CLOSE OFF CEILING OPENING.

1 ENSURE INSTALLED FIXTURES ARE CENTRALLY POSITIONED ALONG LENGTH OF WALL.

MEASURE DISTANCE (DIM. X) BETWEEN END FIXTURE AND ADJACENT WALL SURFACE. SAWCUT TRIM (PROVIDED IN SE KIT) TO DIM. X. IF END FIXTURE IS 2', ALSO SAW CUT PLENUM COVER TO AVOID INTERFERENCE WITH SUPPORT RAIL LOCKING SCREW AND PEM NUT OF END FIXTURE.

2

BEND SPLINE (PROVIDED IN SE KIT) TO 90DEG ANGLE AND INSERT INTO SE TRIM. SECURE BY INSERTING MACHINE SCREW INTO PEM NUT INCLUDED IN SPLINE.

3

ALIGN SE TRIM WITH TRIM OF END FIXTURE. SLIDE SPLINE OF FIXTURE TRIM INTO GROOVE OF SE TRIM, CENTERING OVER JOINT. SECURE USING (2) #8-32 MACHINE SCREWS. SECURE BENT SPLINE TO WALL USING (1) MOUNTING SCREW.

4

ATTACH SE HOUSING TO SE TRIM AND END FIXTURE USING PROVIDED MACHINE SCREWS. IF NECESSARY, BEND TAB AT NEAR END OF SE HOUSING UPWARD TO AVOID INTERFERENCE WITH SCREW ON FIXTURE. APPLY DOUBLE-SIDED TAPE (AS SHOWN IN RED) TO TOP TAB OF SE HOUSING.

5

CUT OFF EXCESS IF NECESSARY (SEE STEP 1)

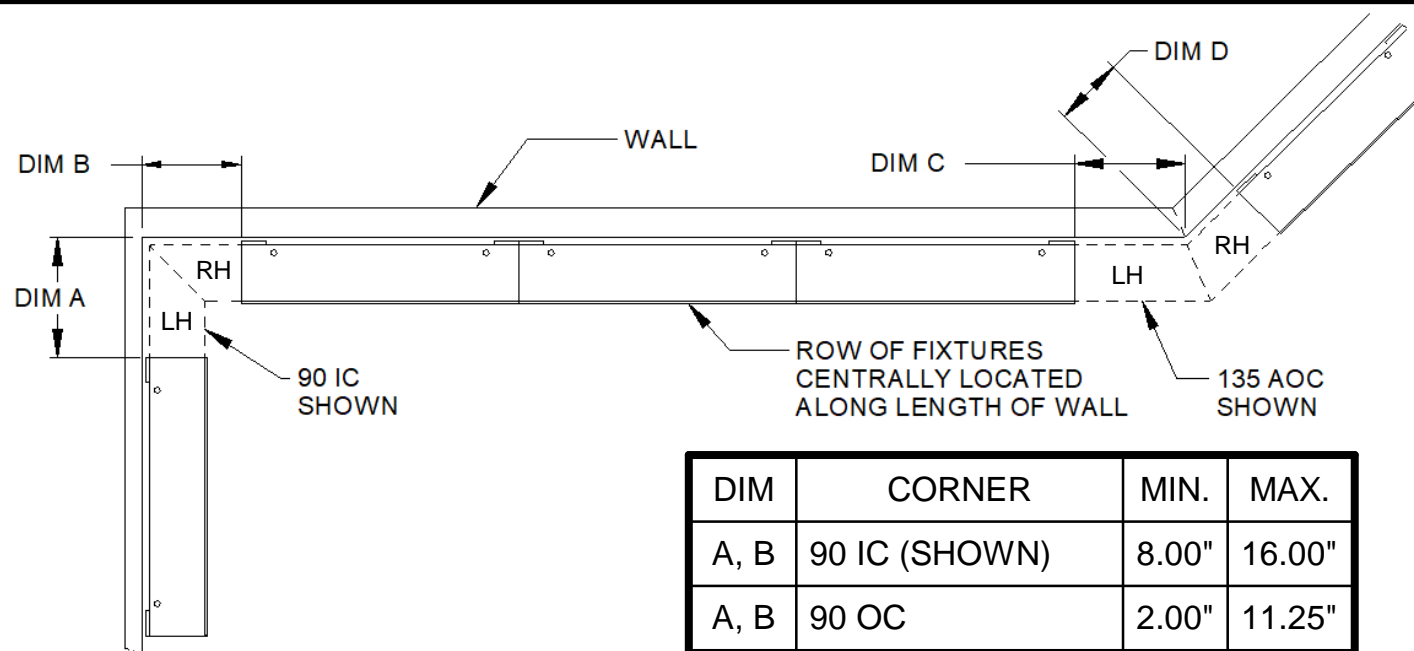
BEND TAB AT FAR END OF PLENUM COVER UP TO 90DEG ANGLE. PLACE PLENUM COVER OVER SUPPORT RAIL AND ON DOUBLE-SIDED TAPE TO SECURE ONTO SE HOUSING. FASTEN USING MOUNTING SCREW (PROVIDED BY OTHERS).

CORNER EXTENSION SYSTEM CONNECTOR INSTALLATION

INSIDE (IC, AIC) AND OUTSIDE (OC, AOC) CORNER EXTENSIONS ARE INSTALLED BETWEEN FIXTURES TO CLOSE OFF CEILING OPENING AT WALL CORNERS.

1

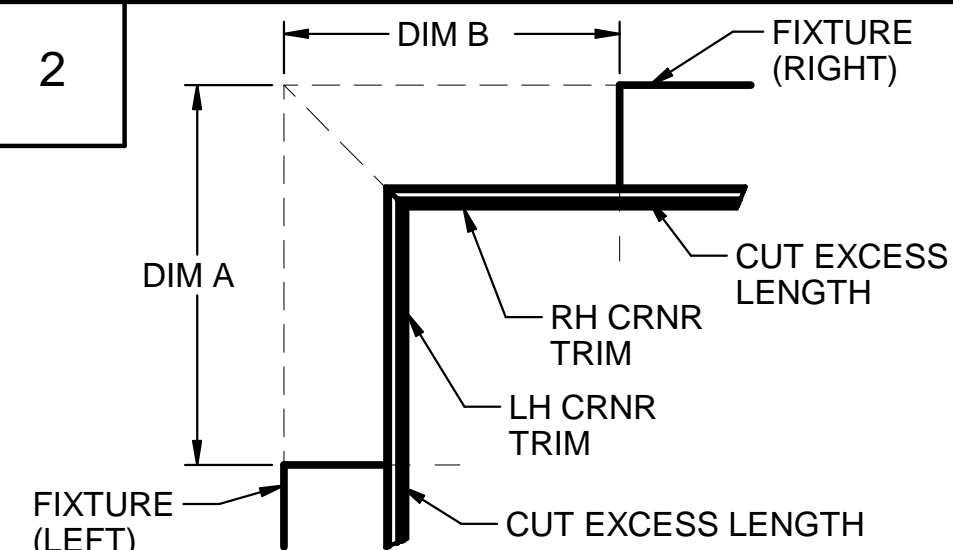
ENSURE INSTALLED FIXTURES ARE CENTRALLY POSITIONED ALONG LENGTH OF WALL. MEASURE DISTANCES FROM END FIXTURES TO ADJACENT WALL SURFACES, AS SHOWN ON RIGHT AS DIMENSIONS A, B, C, AND D.



DIM	CORNER	MIN.	MAX.
A, B	90 IC (SHOWN)	8.00"	16.00"
A, B	90 OC	2.00"	11.25"
C, D	135 AOC (SHOWN)	2.00"	11.50"
C, D	135 AIC	4.50"	14.50"

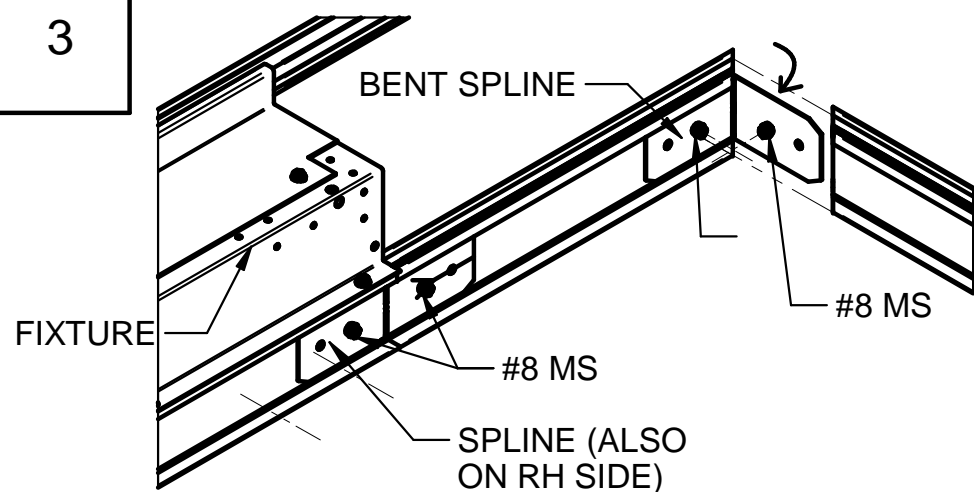
NOTE: ILLUSTRATIONS ON THIS PAGE DEPICT 90 IC KIT UNLESS OTHERWISE NOTED. PROCEDURES ARE SIMILAR FOR ANY ANGLE/ORIENTATION.

2



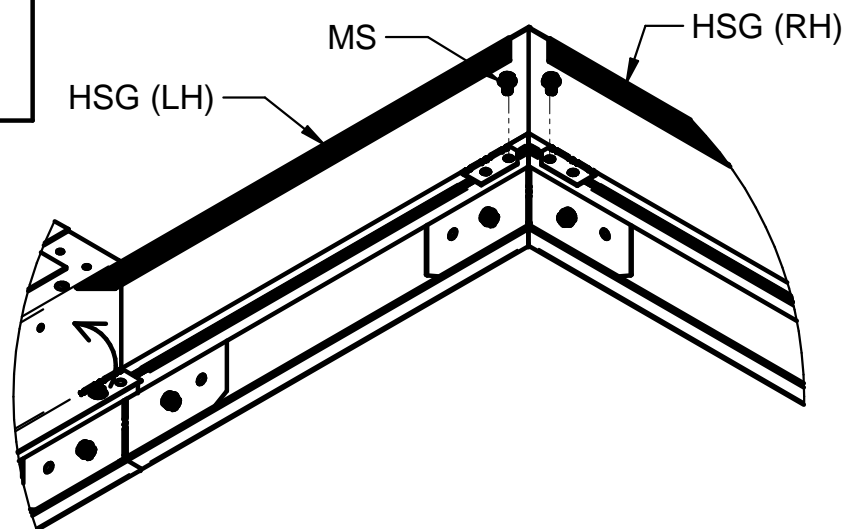
SAWCUT LEFT HAND AND RIGHT HAND TRIMS ACCORDING TO DIMENSIONS MEASURED. TRIM COMES PRE-CUT FOR 90DEG OR 135DEG CORNERS. IF INSTALLING FOR OTHER ANGLE, NEW ANGLED EDGES MUST BE CUT. INSTALLATION PROCEDURE IS SIMILAR FOR ANY CORNER ANGLE.

3



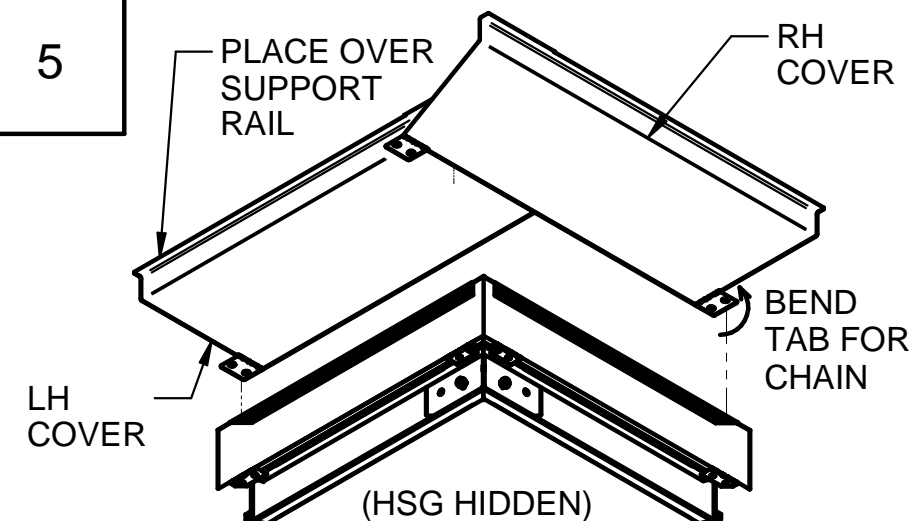
BEND SPLINE TO CORNER ANGLE AND SLIDE INTO CORNER TRIMS. ALIGN CORNER TRIMS WITH TRIMS OF FIXTURES ADJACENT TO CORNER. SLIDE SPLINE OF EACH FIXTURE TRIM INTO CORNER TRIM, CENTERING OVER JOINT. SECURE EACH SPLINE USING (2) #8-32 MACHINE SCREWS.

4



ATTACH HOUSING TO EACH CORNER TRIM USING PROVIDED MACHINE SCREWS. IF NECESSARY, BEND TAB UPWARD TO AVOID INTERFERENCE WITH SCREW ON FIXTURE. APPLY DOUBLE-SIDED TAPE (AS SHOWN IN RED) TO TOP TAB OF EACH HOUSING PIECE.

5

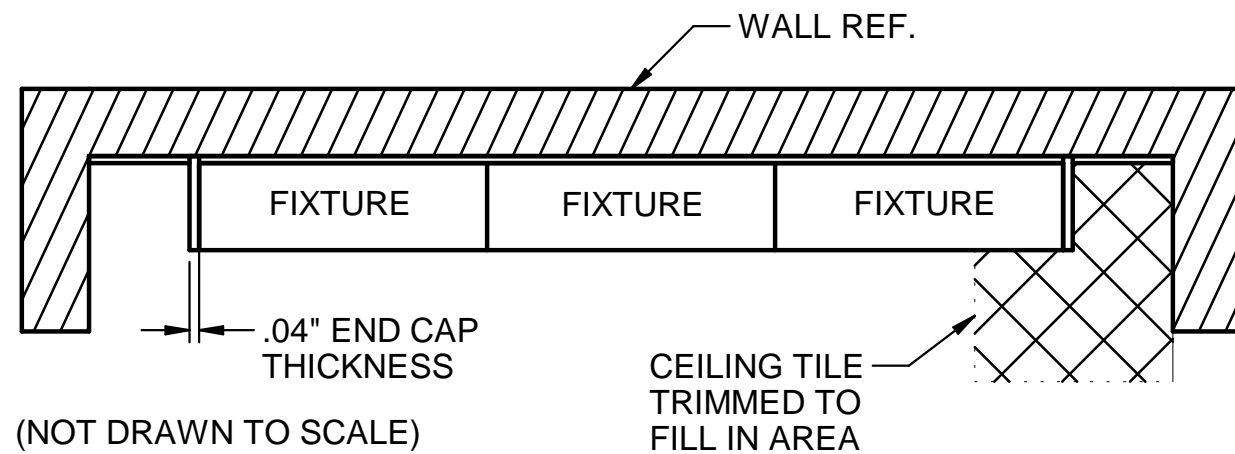


PLACE PLENUM COVERS OVER SUPPORT RAILS AND ON DOUBLE-SIDED TAPE TO SECURE ONTO CORNER HOUSINGS. OVERLAP WITH LEFT HAND SIDE BELOW RIGHT HAND SIDE, ENSURING THERE ARE NO GAPS. IF USING CHAINS ON PLENUM COVERS, BEND TABS UP AND USE HOLES IN TABS.

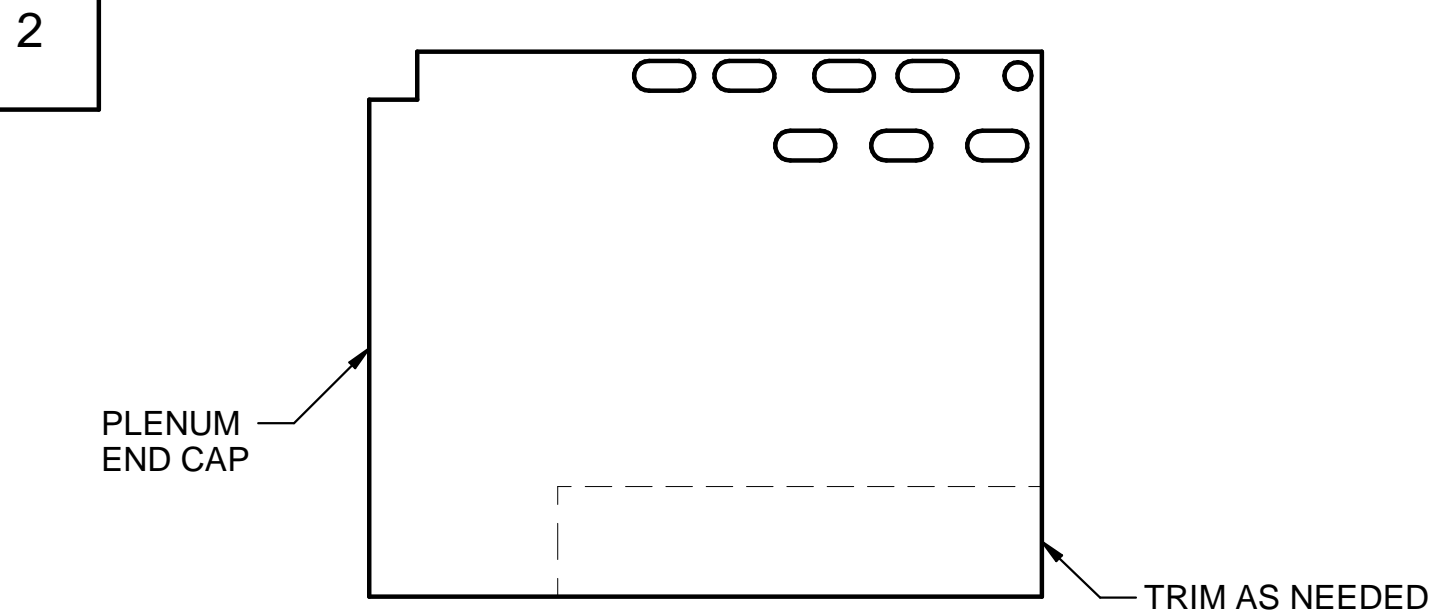
PLENUM END CAP INSTALLATION

PLENUM END CAPS ARE INSTALLED AT ENDS OF FIXTURE OR ROW OF FIXTURES TO CLOSE OFF PLENUM OPENING WHEN STRAIGHT OR CORNER EXTENSIONS ARE NOT USED.

1 ENSURE INSTALLED FIXTURES ARE CENTRALLY POSITIONED ALONG LENGTH OF ROW.

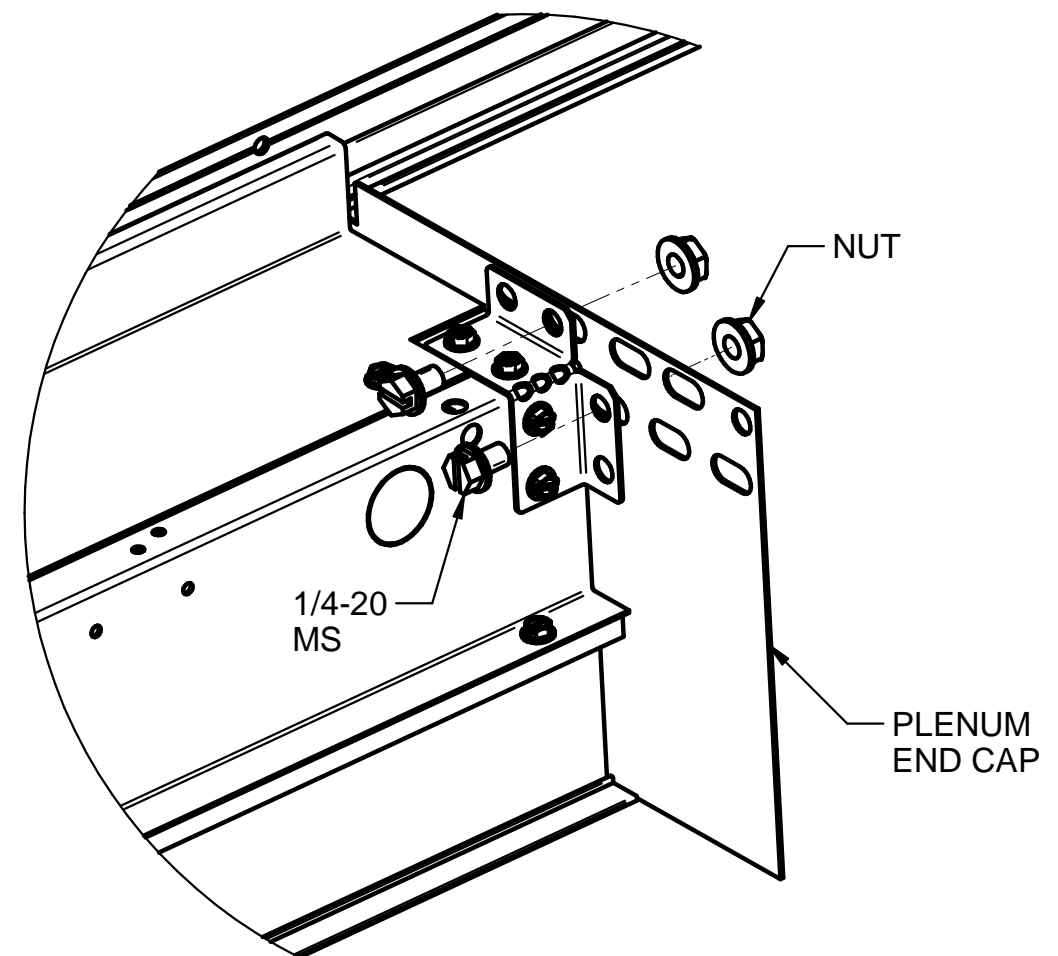


TRIM CEILING TILES TO ACCOMODATE OPENINGS BETWEEN FIXTURES AND ADJACENT WALL SURFACES.



TRIM END CAPS AS NECESSARY TO PREVENT ANY INTERFERENCE WITH DRYWALL, T-BAR, OR TILE.

3



MOUNT END CAP TO EACH END OF FIXTURE OR ROW OF FIXTURES BY ATTACHING (2) 1/4-20 SCREWS AND NUTS THROUGH ROW MOUNTING BRACKET. MULTIPLE HOLES ARE PROVIDED ON END CAP TO ACCOMMODATE FIELD ADJUSTABLE SLOT WIDTH.