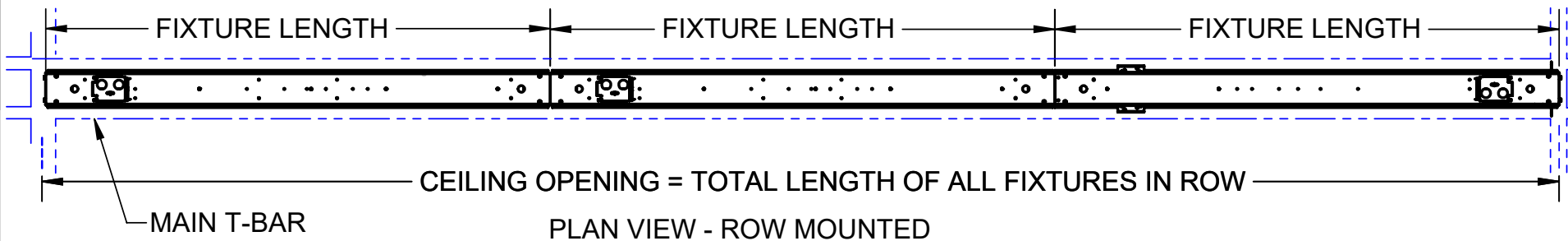


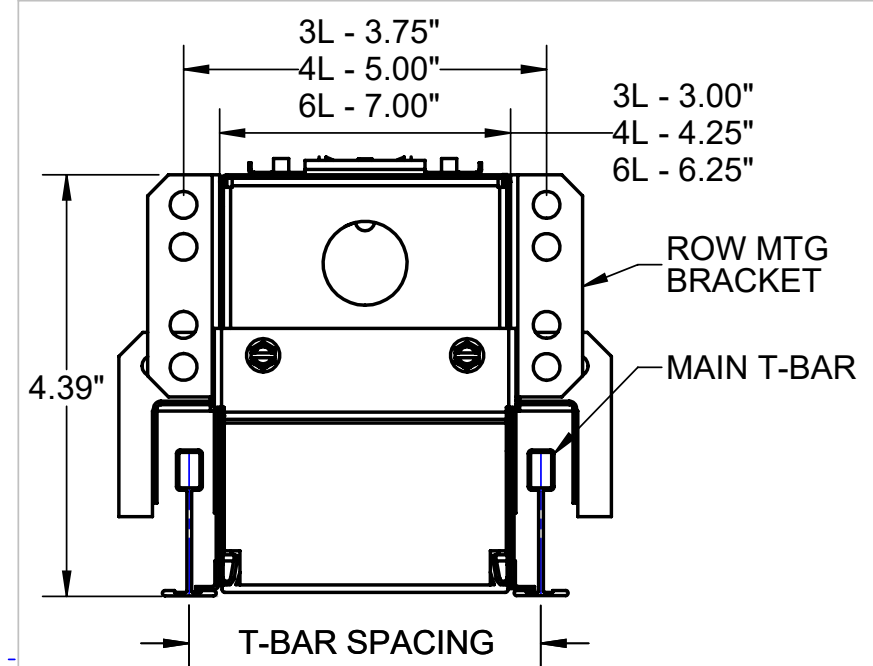
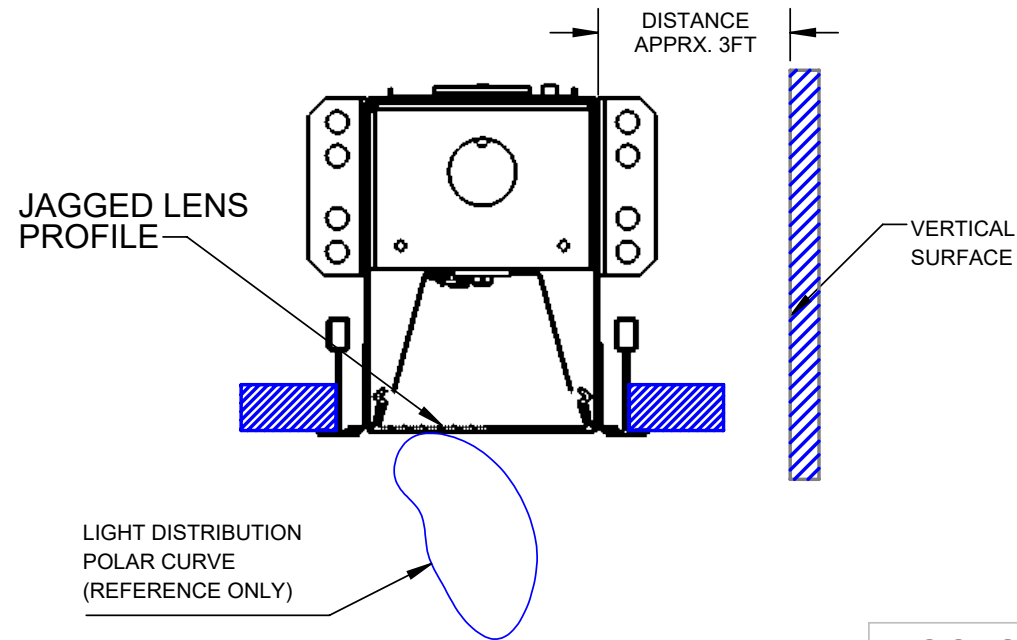
PLAN VIEW - INDIVIDUALLY MOUNTED

NOTE:
INDIVIDUAL UNITS CANNOT BE JOINED IN FIELD TO CREATE RUNS.



PLAN VIEW - ROW MOUNTED

NOTE:
FOR ASYMMETRIC DIRECT (AD) FIXTURES, MAKE SURE THE JAGGED SURFACE OF THE LENS TO DIRECTLY UNDER THE LED WHEN REPLACING THE LENS.



CROSS SECTION VIEW - LG-D & NG-D

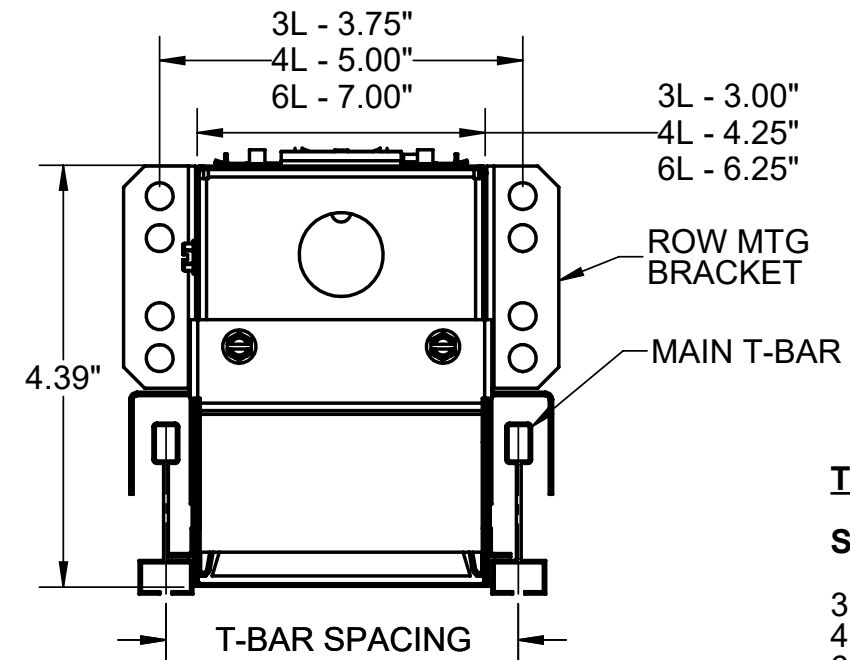
T-BAR SPACING

LG-D (15/16")

- 3L - 4.125"
- 4L - 5.375"
- 6L - 7.375"

NG-D (9/16")

- 3L - 3.750"
- 4L - 5.000"
- 6L - 7.000"



CROSS SECTION VIEW - SS-D

T-BAR SPACING

SS-D (SCREWSLOT)

- 3L - 3.750"
- 4L - 5.000"
- 6L - 7.000"

GENERAL NOTES:

1. LEAVE PROTECTIVE WRAPPING ON FIXTURE UNTIL START OF INSTALLATION.
2. REFER TO SUPPLEMENTAL WIRING INSTRUCTION SHEET 510401 WHEN MAKING WIRING CONNECTIONS.
3. ALL CEILING T-BARS MUST BE INSTALLED PRIOR TO MOUNTING FIXTURES.
4. APPROXIMATE WEIGHT OF FIXTURE IS 3.50 LBS. PER FOOT OF LENGTH.
5. INDIVIDUAL UNITS CANNOT BE JOINED IN FIELD TO CREATE RUNS.

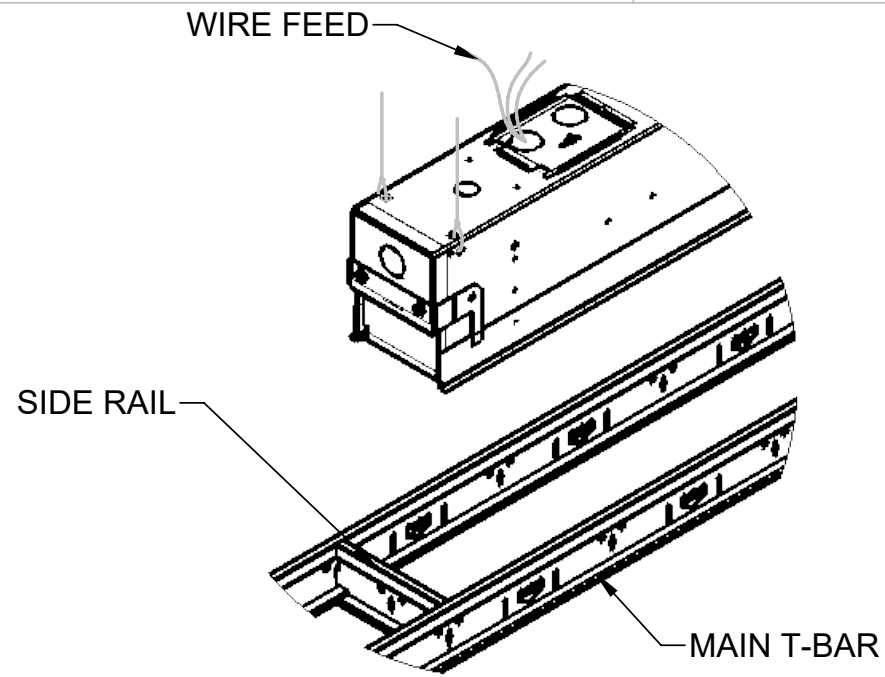
TOOLS REQUIRED

- SCREWDRIVER/DRILL
- 7/16" NUT DRIVER

SUPPLIED BY INSTALLER

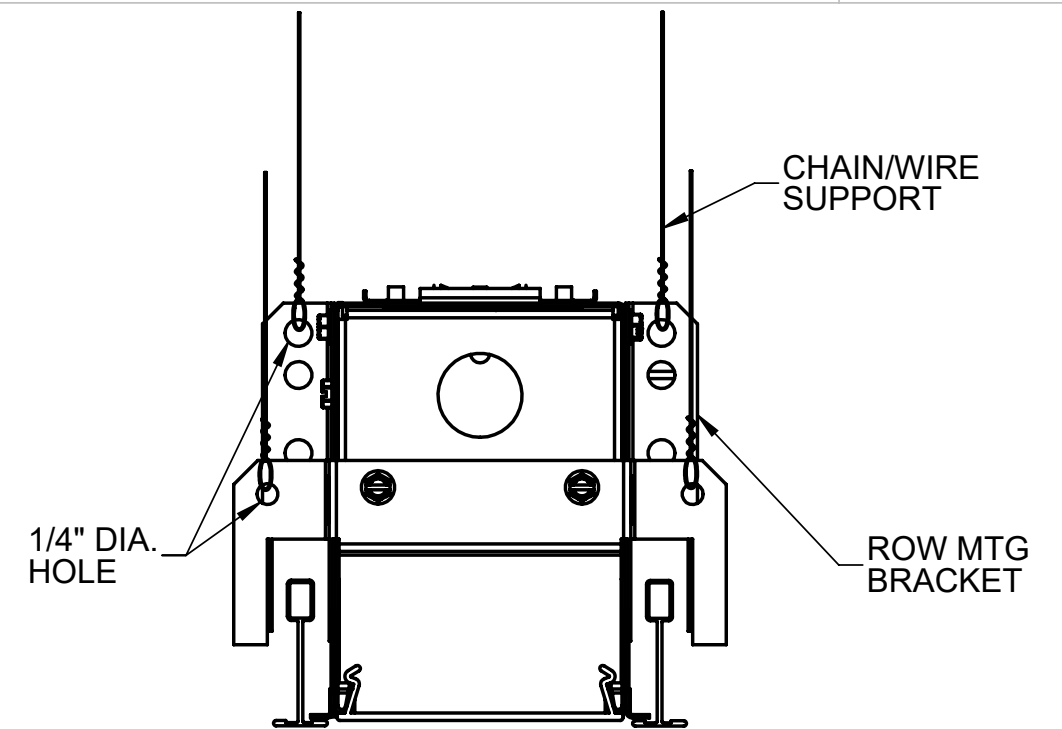
- SUPPLEMENTAL CHAIN OR WIRE SUPPORT

1



LIFT FIXTURE (1ST FIXTURE OF ROW) UP NEAR CEILING AND BRING WIRE FEED INTO WIREWAY VIA 7/8" HOLE. RAISE FIXTURE INTO CEILING PLENUM, SEATING SIDE RAILS ONTO MAIN T-BARS. MAKE WIRING CONNECTIONS AND REPLACE ACCESS COVER.

2

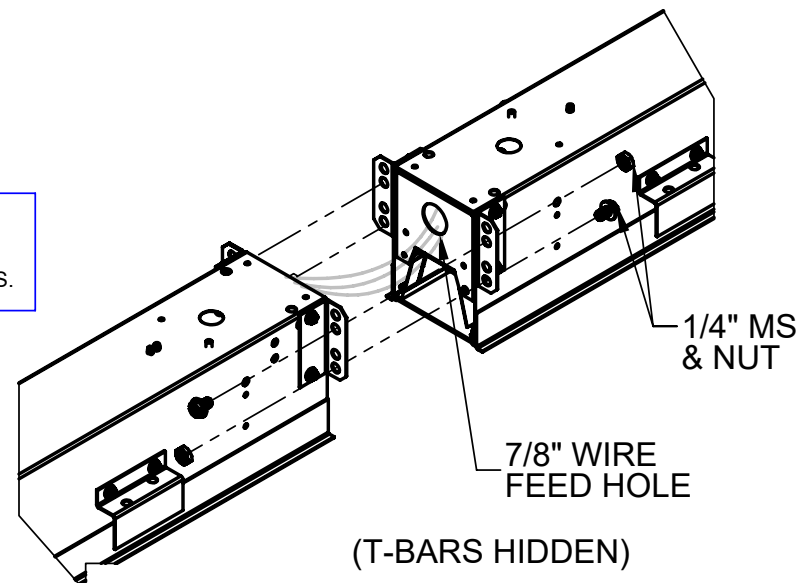


ATTACH SUPPLEMENTAL CHAIN OR WIRE SUPPORT USING 1/4" HOLES IN ROW MOUNTING BRACKETS/END CAP. CHAIN/WIRING IS SUPPLIED BY INSTALLER.

3

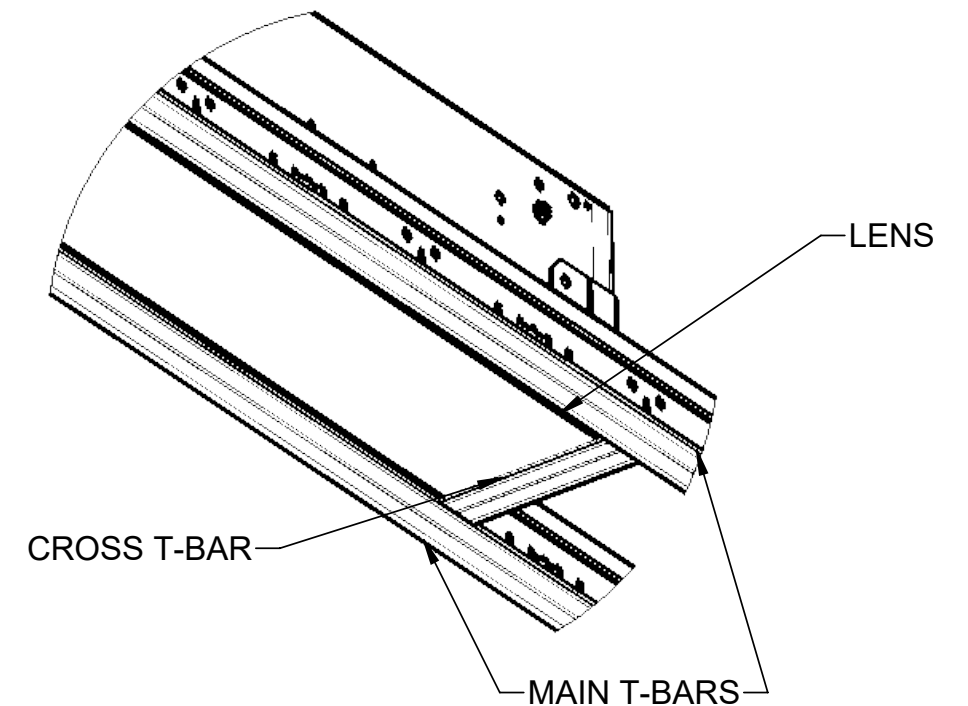
IF INSTALLING INDIVIDUAL FIXTURE, SKIP TO STEP 4.

NOTE:
INDIVIDUAL UNITS CANNOT BE JOINED IN FIELD TO CREATE RUNS.



LIFT AND INSTALL NEXT FIXTURE IN ROW PER STEPS 3 - 4. LOOSELY BOLT FIXTURES TOGETHER USING (4) 1/4-20 X 3/8" LONG MACHINE SCREWS AND NUTS. ROUTE BRANCH CIRCUIT WIRES VIA 7/8" HOLES IN END HEADERS. LEVEL AND ALIGN FIXTURES BEFORE TIGHTENING FASTENERS. REPEAT PROCEDURE FOR EACH ADDITIONAL FIXTURE.

4

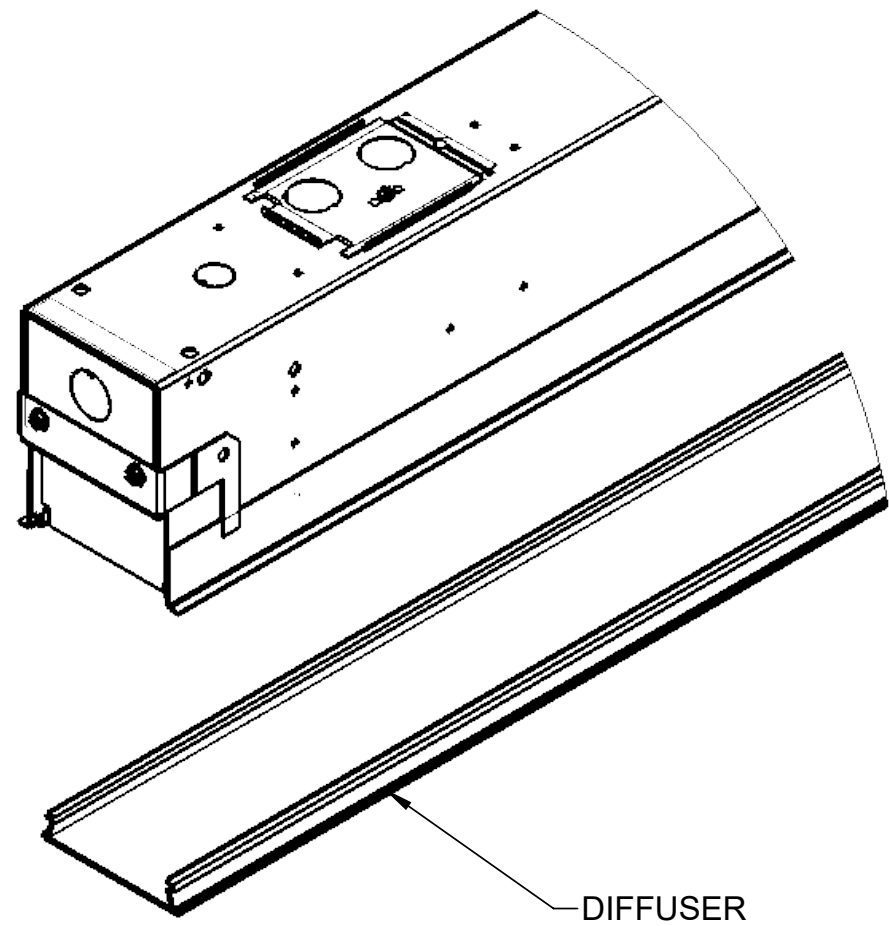


LENS WILL FIT WITH T-BARS IN FRONT OF CROSS T-BAR

7

LENS REMOVAL

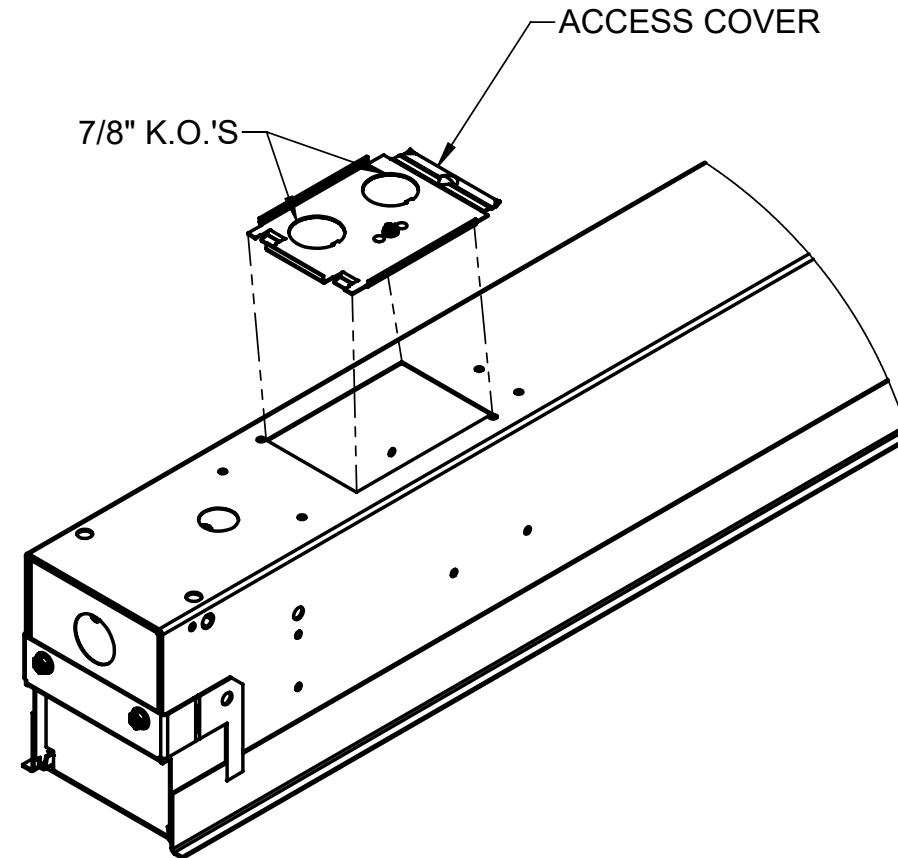
(T-BARS HIDDEN FOR CLARITY)



TO REMOVE, INSERT SCREWDRIVER OR FLAT HEAD PRY TOOL INTO THE END OF THE HOUSING AND PULL DOWN.

8

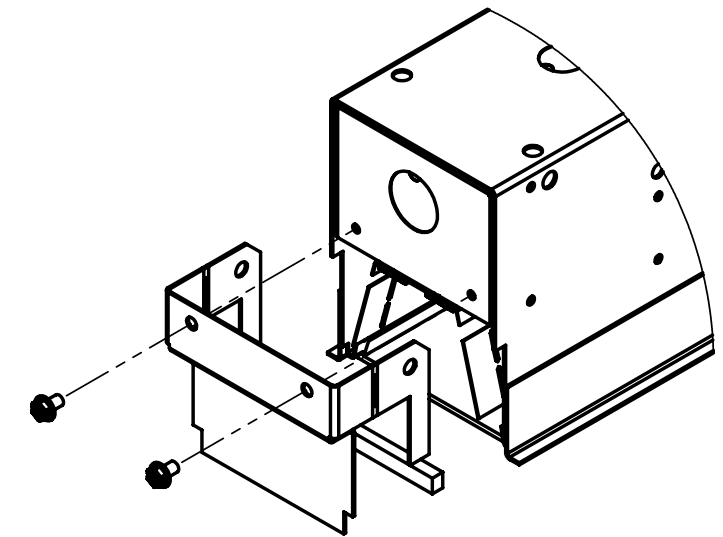
ACCESS REMOVAL



REMOVE ACCESS COVER FROM FIXTURE HOUSING BY SLIDING THE COVER AND SHIFTING IT OUT. REMOVE 7/8" KNOCK-OUT AT DESIRED FEED LOCATION.

9

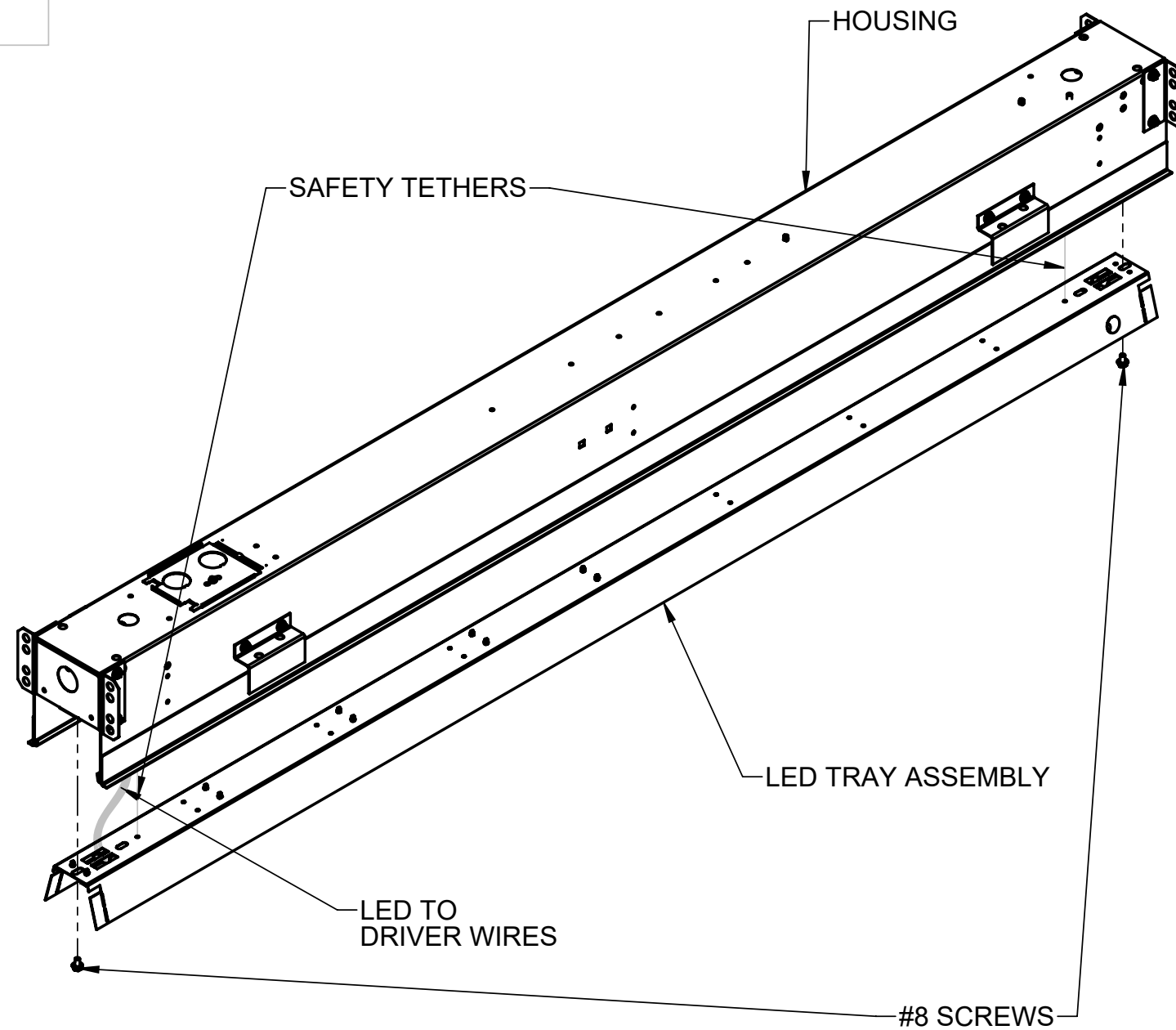
END CAP REMOVAL



REMOVE THE END CAP BY REMOVING (2) #8 AS SHOWN. FOR INDIVIDUAL FIXTURE, DO SO AT BOTH ENDS. FOR ROW, DO SO AT NEAR END OF 1ST FIXTURE AND FAR END OF LAST FIXTURE.

10

LED TRAY ASSEMBLY REMOVAL



BEFORE REMOVING LED TRAY ASSEMBLY SEE STEP 7 FOR LENS REMOVAL.

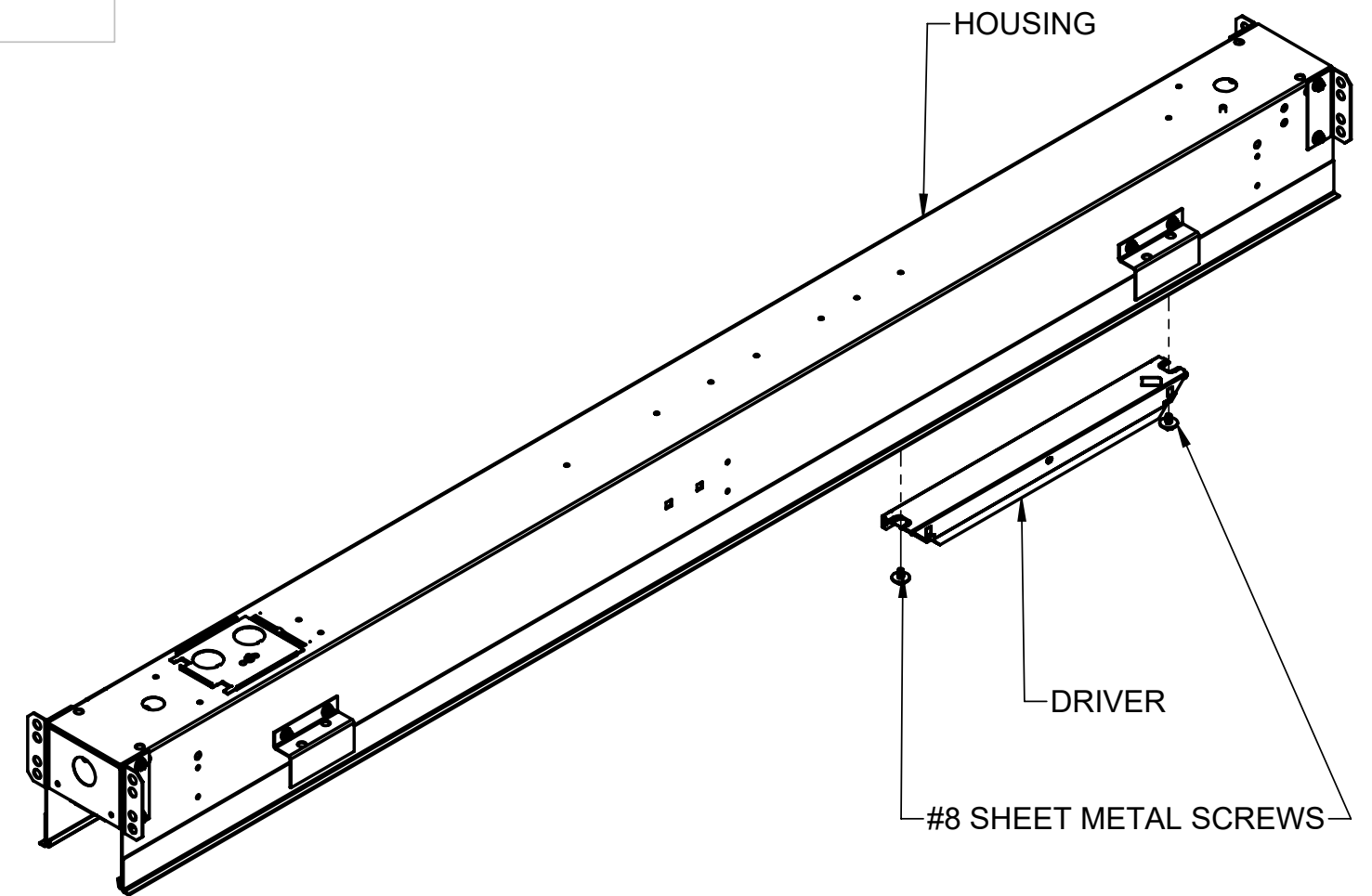
TO REMOVE LED TRAY ASSEMBLY:

- REMOVE THE (2) #8 SHEET METALS SCREWS AS SHOWN.
- DISCONNECT WIRE NUTS THAT CONNECT LED WIRES TO DRIVER.
- DISCONNECT SAFETY TETHERS CONNECTED TO THE LED TRAY TO FULLY REMOVE THE LED TRAY ASSEMBLY FROM HOUSING.

(TO REPLACE LED TRAY ASSEMBLY REPEAT THE ABOVE STEPS IN REVERSE)

11

DRIVER REMOVAL



BEFORE REMOVING DRIVER SEE STEPS 7 AND 10 FOR LENS AND LED TRAY REMOVAL.

- REMOVE THE (2) #8 SHEET METAL SCREWS AS SHOWN AND REMOVE DRIVER.

(TO REPLACE LED TRAY ASSEMBLY REPEAT THE ABOVE STEPS IN REVERSE)