

**GENERAL NOTES: (READ SHEETS COMPLETELY BEFORE STARTING)**

1. LEAVE PROTECTIVE WRAPPING MATERIAL ON FIXTURES UNTIL START OF INSTALLATION TO PROTECT FINISH FROM DAMAGE.
2. REFER TO SUPPLEMENTAL WIRING INSTRUCTION SHEET 510401 WHEN MAKING WIRING CONNECTIONS.
3. APPROXIMATE WEIGHT OF FIXTURE IS 3.50 LBS PER FOOT OF LENGTH.

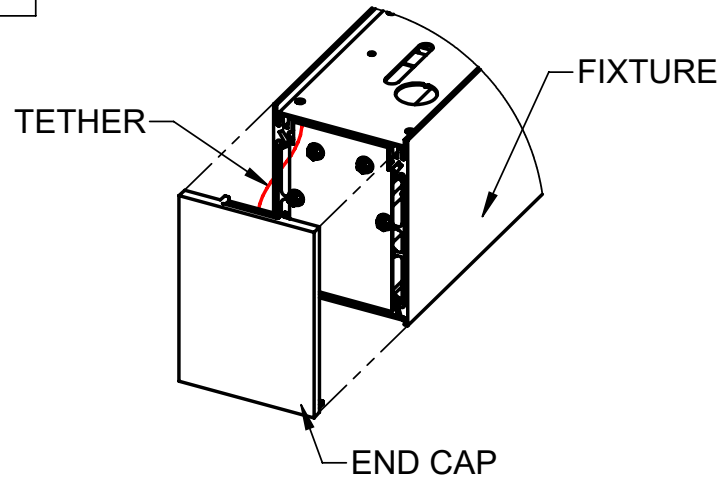
**TOOLS REQUIRED**

- SCREWDRIVER/DRILL

**SUPPLIED BY INSTALLER**

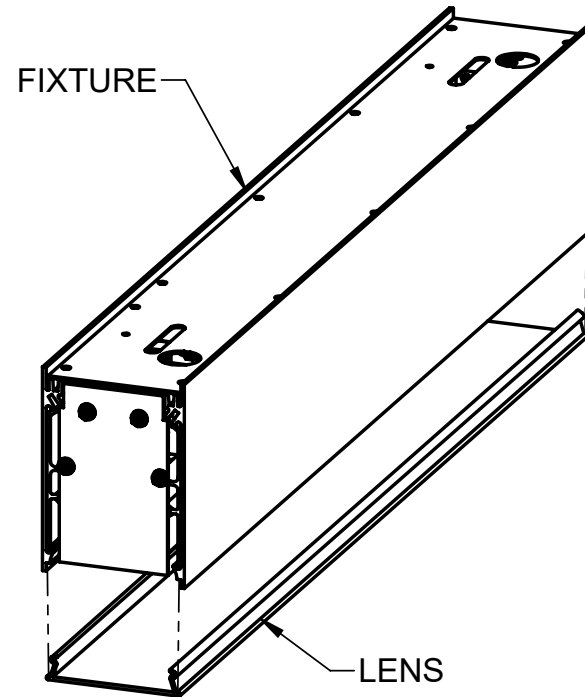
- ANCHOR SCREWS AND WASHERS

1



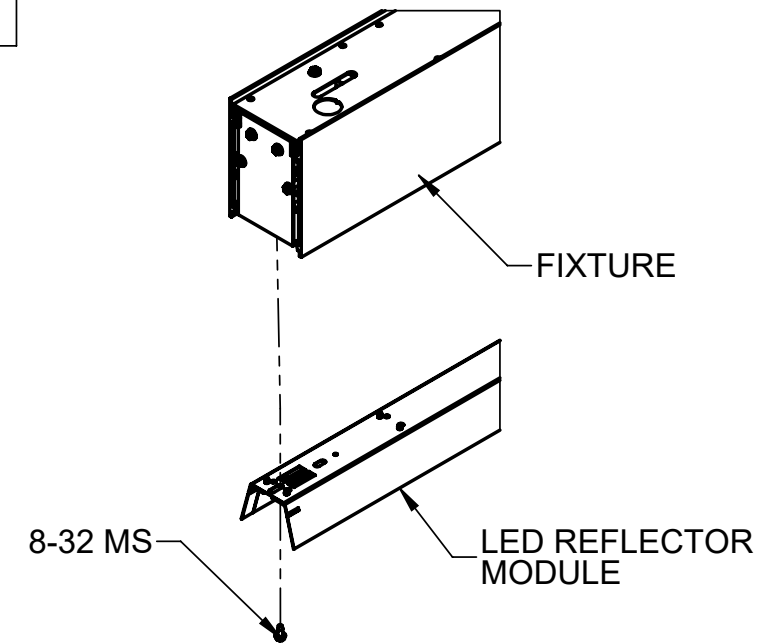
REMOVE THE END CAP ASSEMBLIES BY PULLING END CAP TO DISENGAGE MAGNETS. FOR INDIVIDUAL FIXTURE, DO SO AT BOTH ENDS. FOR ROW, DO SO AT NEAR END OF 1ST FIXTURE AND FAR END OF LAST FIXTURE.

2



TO REMOVE LENS, PULL LENS DOWN TO DISENGAGE LENS FROM FIXTURE. FOR INDIVIDUAL FIXTURE, REMOVE ONE END CAP PER STEP 1.

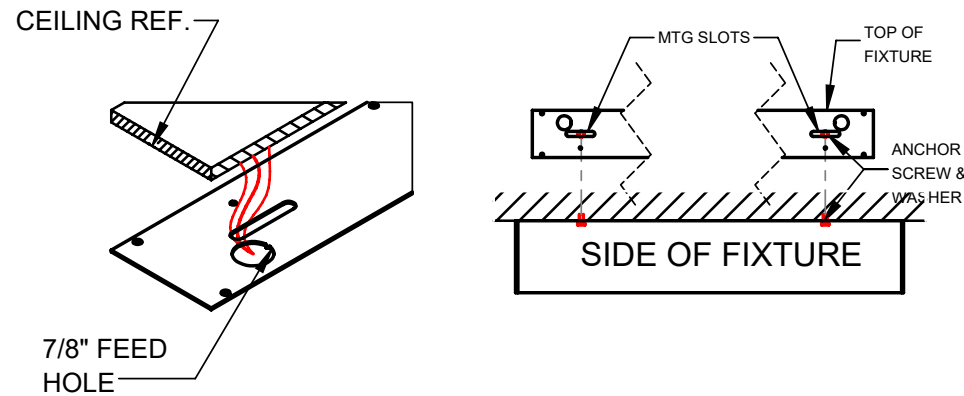
3



DETACH LED REFLECTOR MODULES BY REMOVING 8-32 MACHINE SCREWS.

4

LIFT FIXTURE UP NEAR CEILING. BRING ELECTRICAL FEED THRU 7/8" HOLE AND INTO FIXTURE WIREWAY.

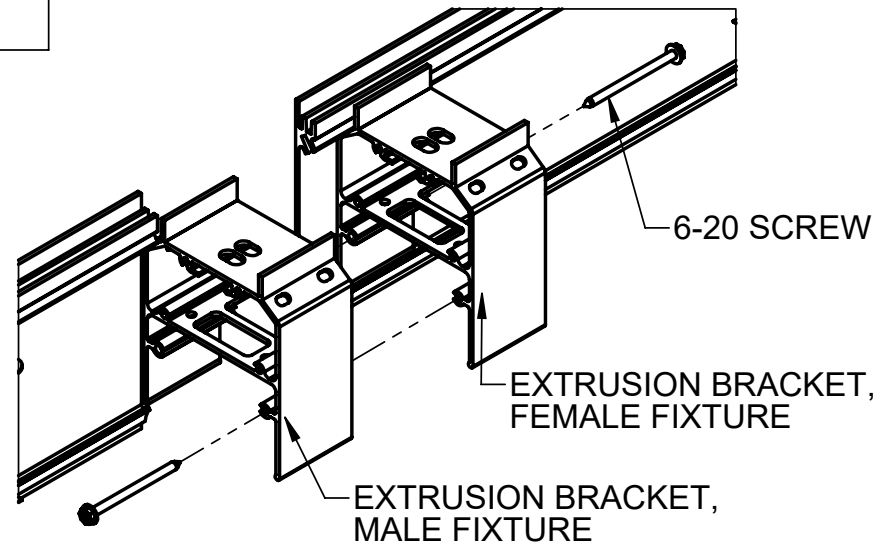


(FIXTURE HOUSING HIDDEN)

RAISE 1ST FIXTURE FLUSH TO CEILING. SECURE WITH (2) ANCHOR SCREWS AND WASHERS (SUPPLIED BY INSTALLER) THROUGH MOUNTING SLOTS INTO CEILING STRUCTURE.

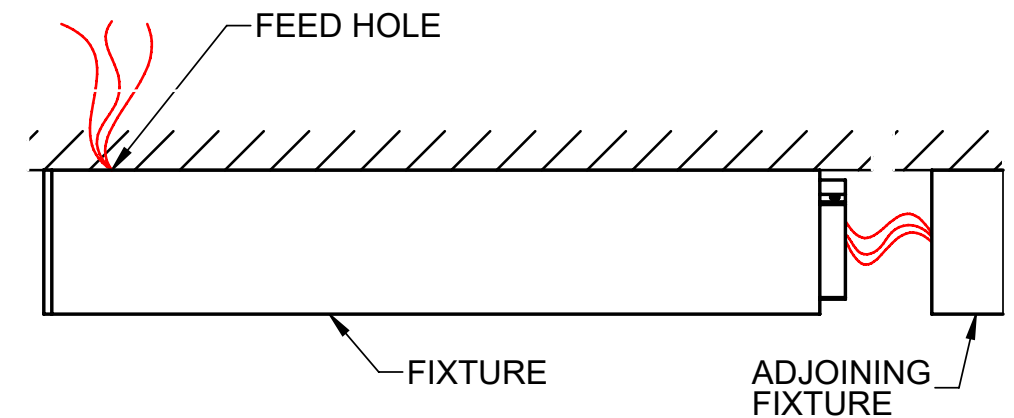
5

PARTS HIDDEN FOR CLAIRITY



MOUNT NEXT FIXTURE IN ROW. AT FIXTURE JOINT, ALIGN AND INSERT EXTRUSION BRACKET OF MALE FIXTURE INTO ADJOINING FIXTURE BEFORE SECURING JOINT USING 6-20 X 2" LONG HEX HEAD SCREWS. TIGHTEN EACH SCREW GRADUALLY, ALTERNATING BETWEEN SIDES. DO NOT OVER TIGHTEN EITHER SIDE AS THIS COULD CAUSE UNALIGNED FIXTURE STRAIGHTNESS AT JOINTS. IF REQUIRED ADJUST MOUNTING SCREWS TO ENSURE PROPER ROW STRAIGHTNESS AND ALIGNMENT IF NEEDED. REPEAT FOR EACH FIXTURE IN ROW

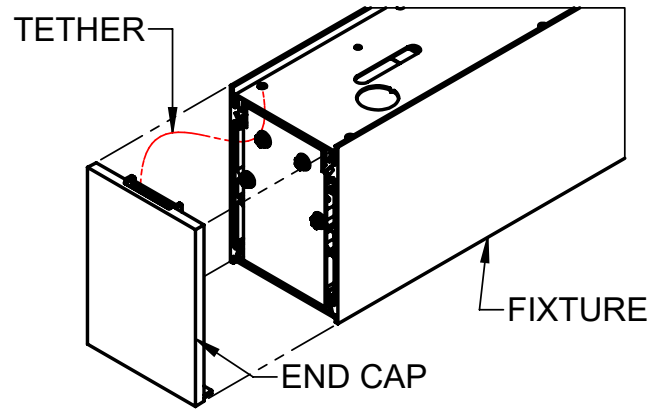
6



MAKE ELECTRICAL CONNECTIONS IN FIXTURE WIREWAY. IF INSTALLING ROW OF FIXTURES, ELECTRICAL FEED CAN BE AT ANY 7/8" HOLE LOCATION. BRANCH CIRCUIT WIRES CAN BE BROUGHT THROUGH EACH ROW JOINT.

7

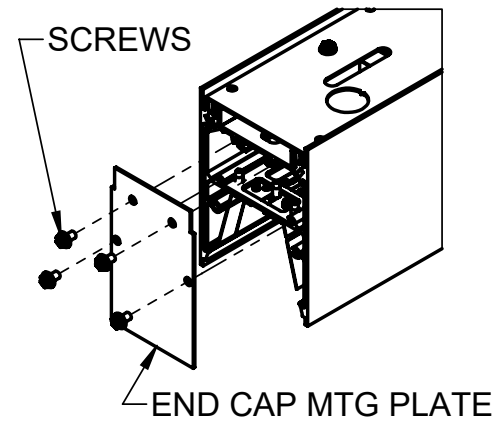
END CAP REMOVAL



REMOVE THE END CAP ASSEMBLIES BY PULLING END CAP TO DISENGAGE MAGNETS  
 FOR INDIVIDUAL FIXTURE, DO SO AT BOTH ENDS. FOR ROW, DO SO AT NEAR END OF 1ST FIXTURE AND FAR END OF LAST FIXTURE.

8

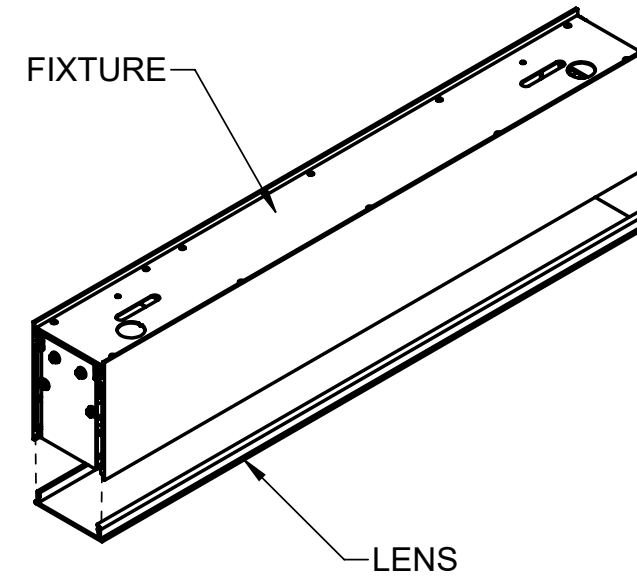
MTG PLATE REMOVAL



TO REMOVE THE END CAP MOUNTING PLATE, REMOVE THE 6-32 SCREWS SHOWN ABOVE.

9

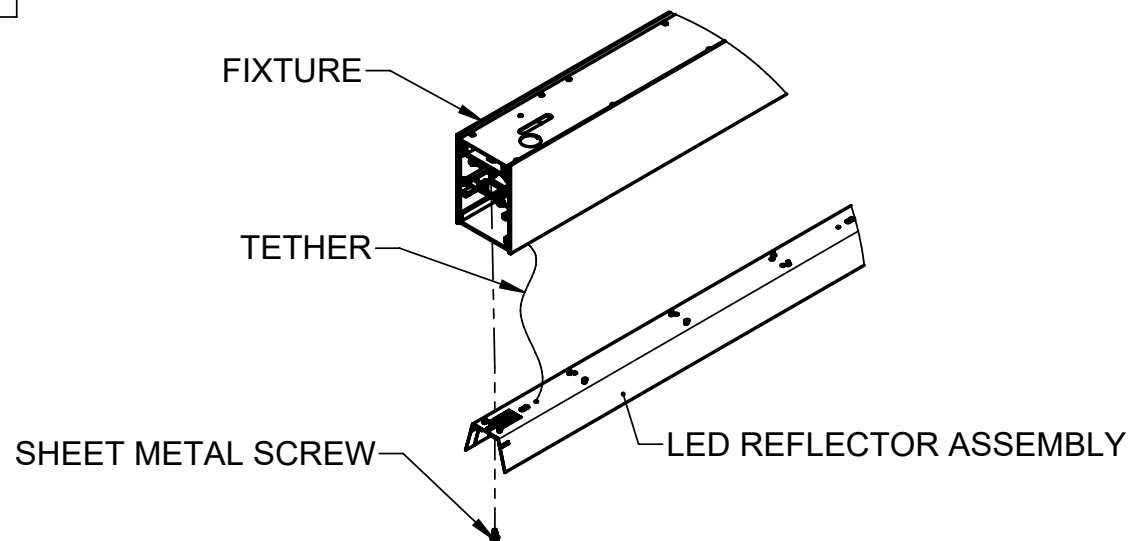
LENS REMOVAL



TO REMOVE, PULL LENS DOWN TO DISENGAGE LENS FROM FIXTURE. FOR INDIVIDUAL FIXTURE, REMOVE ONE END CAP PER STEP 5.

10

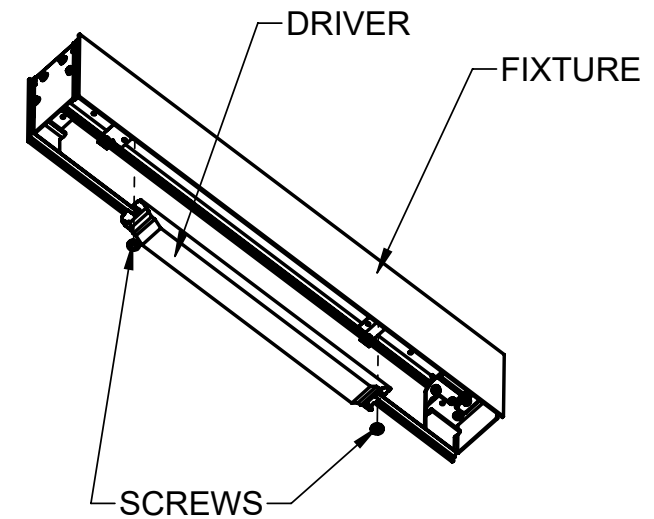
LED REFL ASSEMBLY REMOVAL



BEFORE REMOVING LED REFL ASSEMBLY SEE STEP 1 FOR LENS REMOVAL. TO REMOVE LED REFL ASSEMBLY:  
 REMOVE THE (2) #8 SHEET METALS SCREWS AS SHOWN.  
 DISCONNECT WIRE NUTS THAT CONNECT LED WIRES TO DRIVER.  
 DISCONNECT SAFETY TETHERS CONNECTED TO THE LED REFL ASSEMBLY.

11

DRIVER REMOVAL



BEFORE REMOVING DRIVER SEE STEPS 9 AND 10 FOR LENS AND LED TRAY REMOVAL. REMOVE THE (2) SCREWS AS SHOWN AND REMOVE DRIVER.