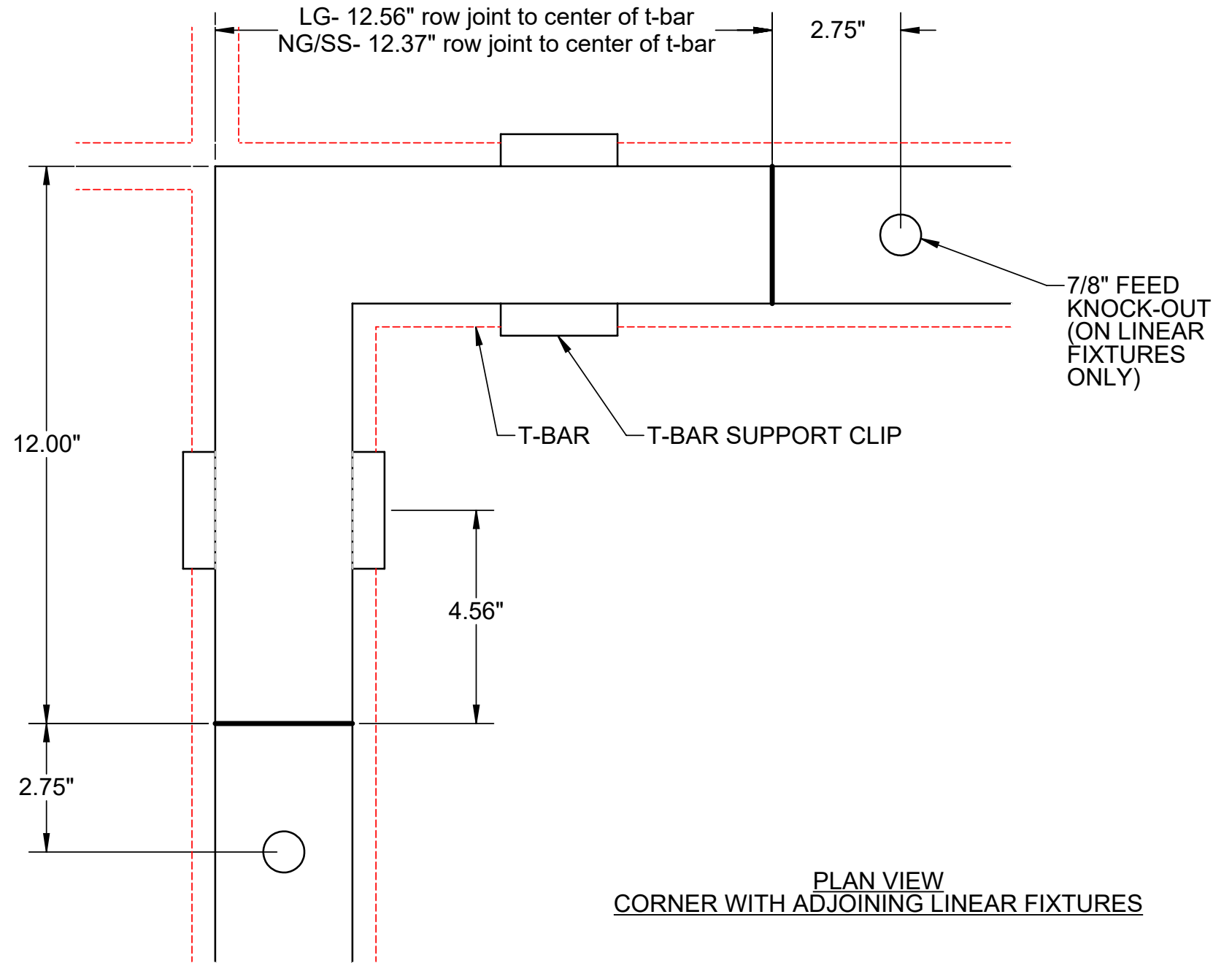


TOP VIEW



PLAN VIEW
CORNER WITH ADJOINING LINEAR FIXTURES

GENERAL NOTES: (READ SHEETS COMPLETELY BEFORE STARTING)

1. **USE THIS INSTRUCTION SHEET IN CONJUNCTION WITH INSTRUCTION SHEET 510640.**
2. LEAVE PROTECTIVE WRAPPING MATERIAL ON FIXTURE(S) UNTIL START OF INSTALLATION TO PROTECT FINISH FROM DAMAGE.
3. REFER TO SUPPLEMENTAL WIRING INSTRUCTION SHEET 510401 WHEN MAKING WIRING CONNECTIONS.
4. ALL CEILING T-BARS MUST BE INSTALLED PRIOR TO INSTALLATION OF FIXTURES.

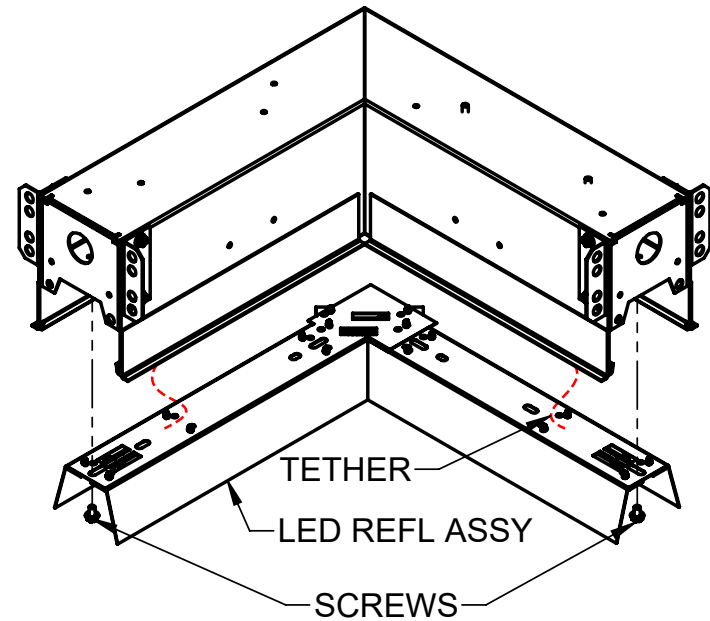
TOOLS REQUIRED

- SCREWDRIVER/DRILL
- 7/16" NUT DRIVER

SUPPLIED BY INSTALLER

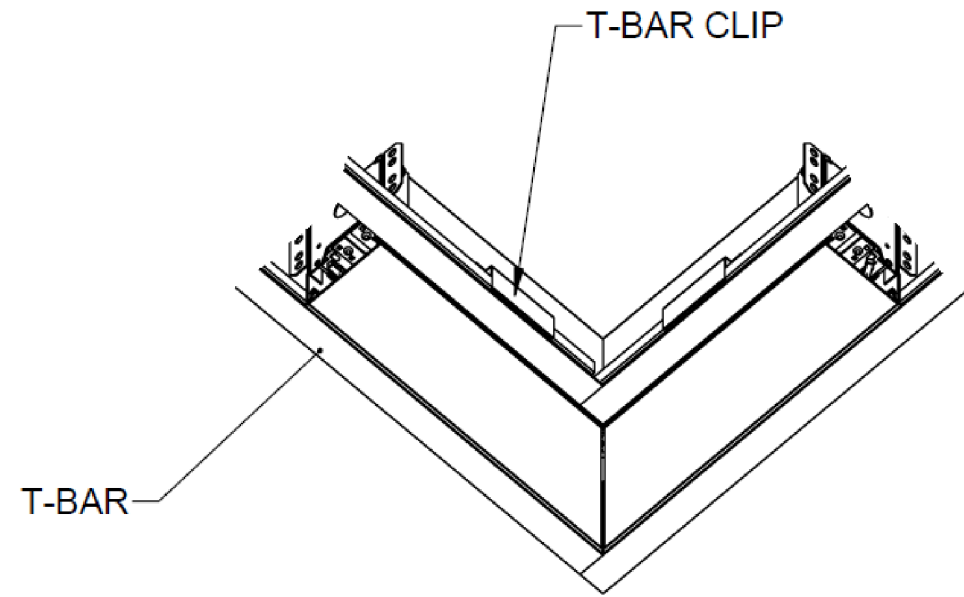
1

INSTALL ONE OF THE LINEAR FIXTURES ADJACENT TO THE CORNER PER INSTRUCTION SHEET 510640.



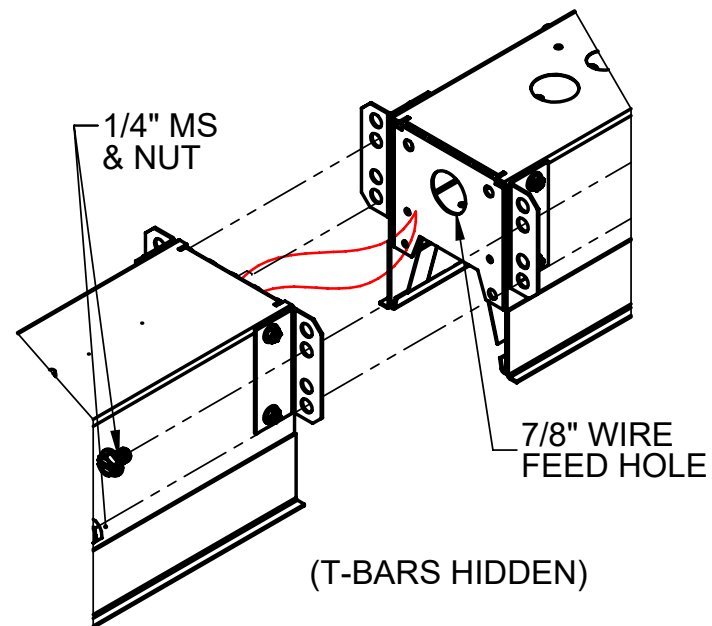
REMOVE LED REFLECTOR MODULES OF CORNER FIXTURE BY REMOVING SCREWS. ALLOW MODULES TO HANG DOWN ON NYLON TETHERS.

2



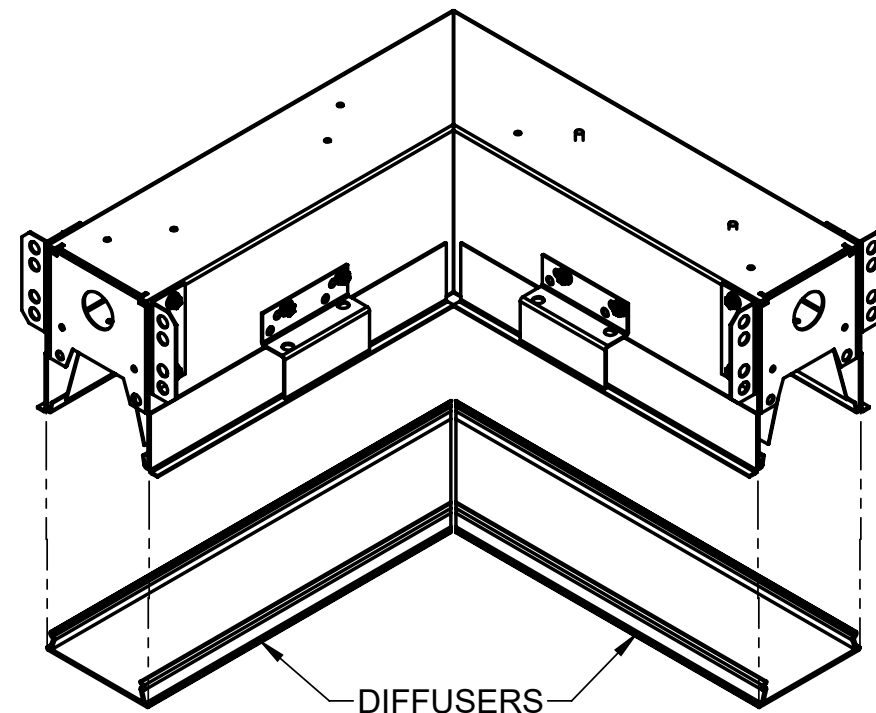
RAISE CORNER FIXTURE UP INTO CEILING PLENUM AND SEAT SIDE RAILS ONTO MAIN T-BARS. ATTACH T-BAR RETAINING CLIPS (SHIPPED SEPARATELY) TO EACH SIDE RAIL USING (2) #8 SHEET METAL SCREWS. SEE INSTRUCTION SHEET 510640 FOR DETAILS.

3



JOIN CORNER FIXTURE WITH MOUNTED LINEAR FIXTURE BY INSERTING (4) 1/4-20 X 3/8" LONG MACHINE SCREWS AND NUTS THROUGH ROW MOUNTING BRACKETS. ROUTE BRANCH CIRCUIT WIRING VIA FEED HOLE AT FIXTURE JOINT. TIGHTEN SCREWS AFTER ENSURING THAT FIXTURES ARE LEVEL AND ALIGNED.

4



SNAP DIFFUSERS INTO BOTTOM OF HOUSING AS SHOWN. TO REMOVE, INSERT SCREWDRIVER OR FLAT HEAD PRY TOOL INTO SIDE OF HOUSING AND PULL DOWN.