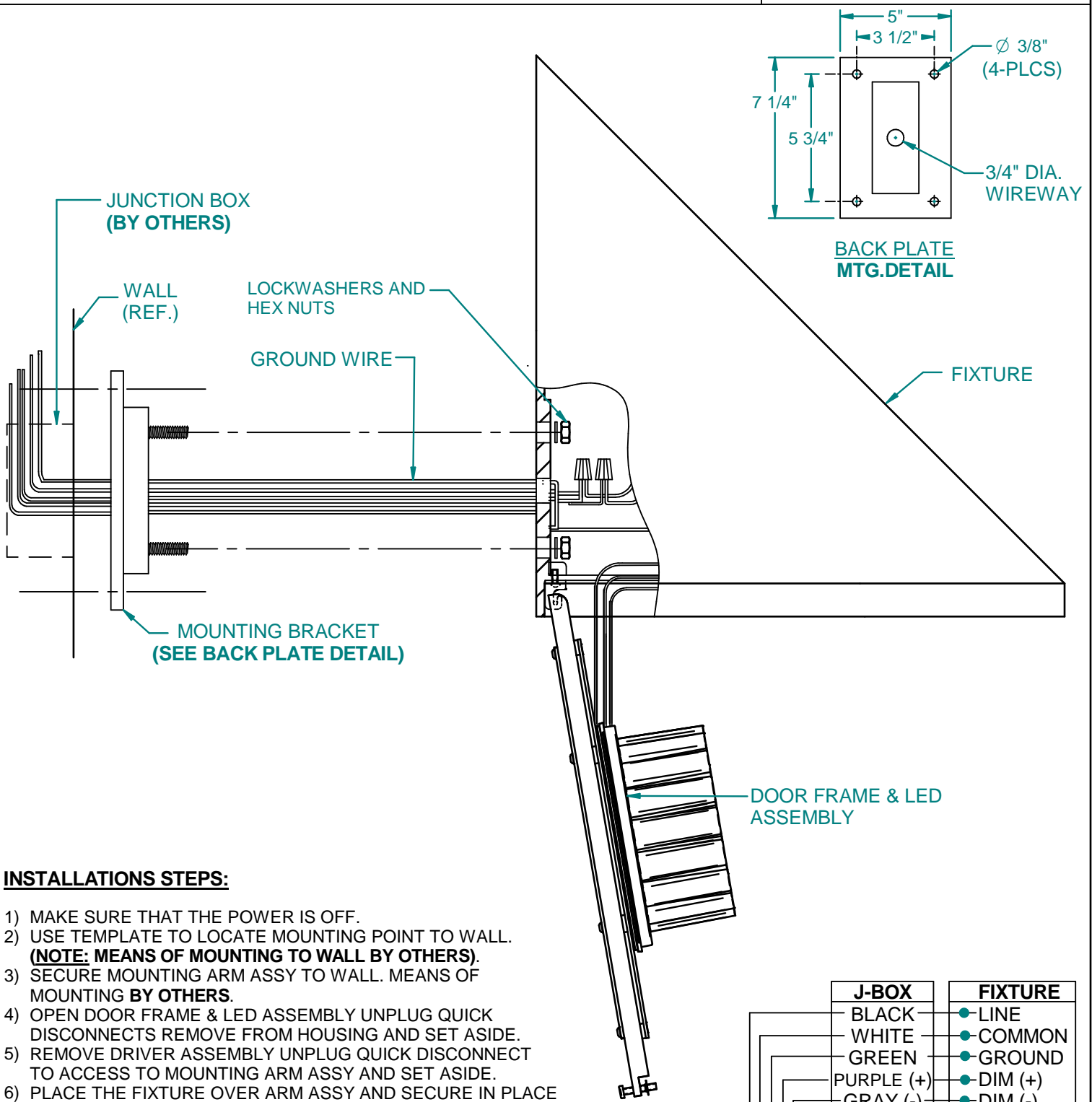


INSTALLATION INSTRUCTIONS

CATALOG NUMBER

M2WD-LED



INSTALLATIONS STEPS:

- 1) MAKE SURE THAT THE POWER IS OFF.
- 2) USE TEMPLATE TO LOCATE MOUNTING POINT TO WALL.
(NOTE: MEANS OF MOUNTING TO WALL BY OTHERS).
- 3) SECURE MOUNTING ARM ASSY TO WALL. MEANS OF MOUNTING BY OTHERS.
- 4) OPEN DOOR FRAME & LED ASSEMBLY UNPLUG QUICK DISCONNECTS REMOVE FROM HOUSING AND SET ASIDE.
- 5) REMOVE DRIVER ASSEMBLY UNPLUG QUICK DISCONNECT TO ACCESS TO MOUNTING ARM ASSY AND SET ASIDE.
- 6) PLACE THE FIXTURE OVER ARM ASSY AND SECURE IN PLACE WITH (2) LOCKWASHERS AND HEX BOLTS AS SHOWN.
- 7) MAKE WIRE CONNECTIONS INSIDE OF FIXTURE AS REQUIRED PER CODE.
- 8) RE-ASSEMBLE DRIVER ASSEMBLY, DOOR FRAME & LED ASSEMBLY BY REVERSING PROCEDURE.
- 9) TURN ON POWER & CHECK FOR OPERATION.
- 10) APPLY A CONTINUOUS BEAD OF SILICONE SEALANT ALL AROUND BACK PLATE WHERE IT MEETS THE MOUNTING SURFACE.
- 11) **INSTALLATION COMPLETED.**

J-BOX	FIXTURE
BLACK	● LINE
WHITE	● COMMON
GREEN	● GROUND
PURPLE (+)	● DIM (+)
GRAY (-)	● DIM (-)

NOTE:
PURPLE & GRAY WIRES FOR DIMMING OPTIONAL.

TO INCOMING
POWER SOURCE