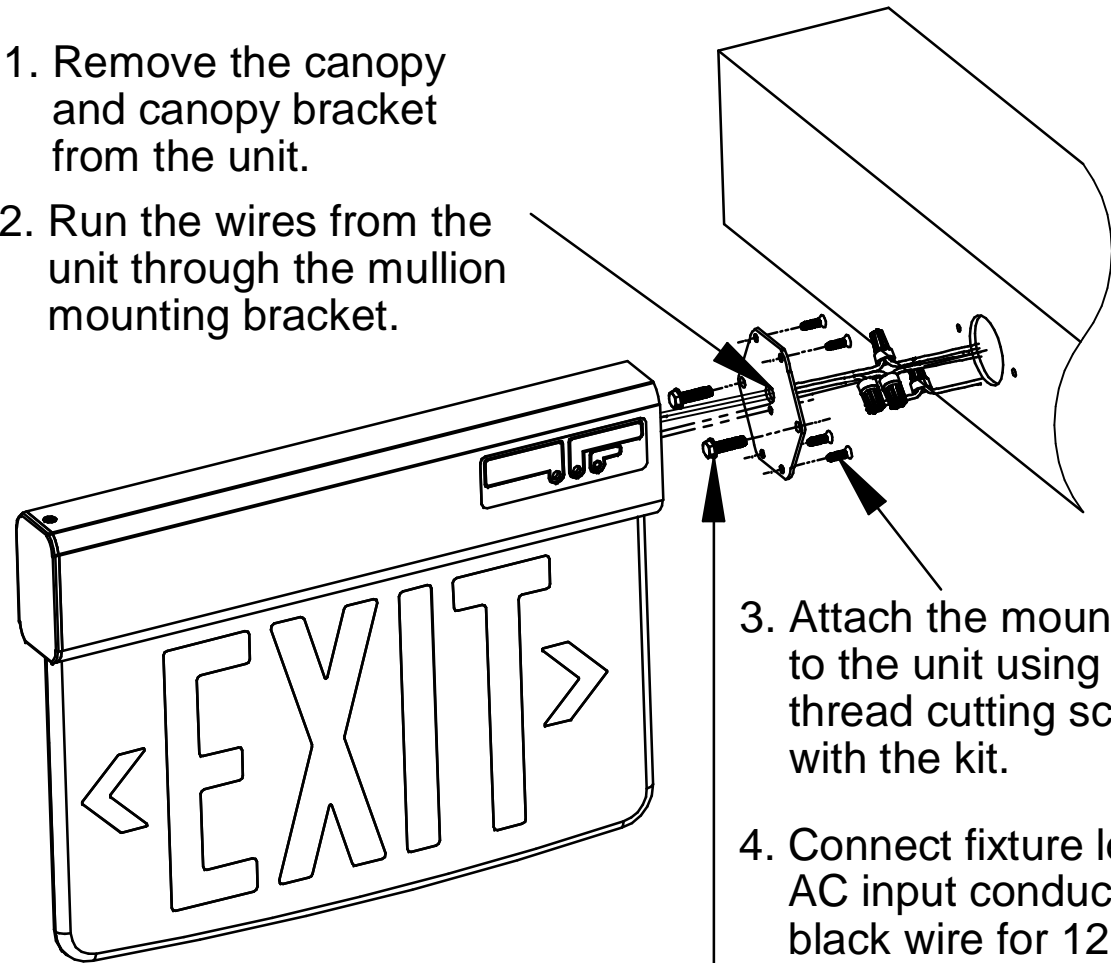




LES MULLION KIT

*Mullion Mounting Kit Installation Instructions
Kits can be used with LES AC and Emergency units*

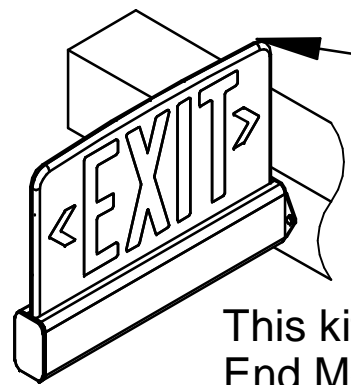
1. Remove the canopy and canopy bracket from the unit.
2. Run the wires from the unit through the mullion mounting bracket.



3. Attach the mounting bracket to the unit using the four #8 thread cutting screws provided with the kit.
4. Connect fixture leads with AC input conductors (use black wire for 120V and red wire for 277v). Connect building ground wire to the green wire connected to the mounting bracket. Terminate unused wire with wire nut.

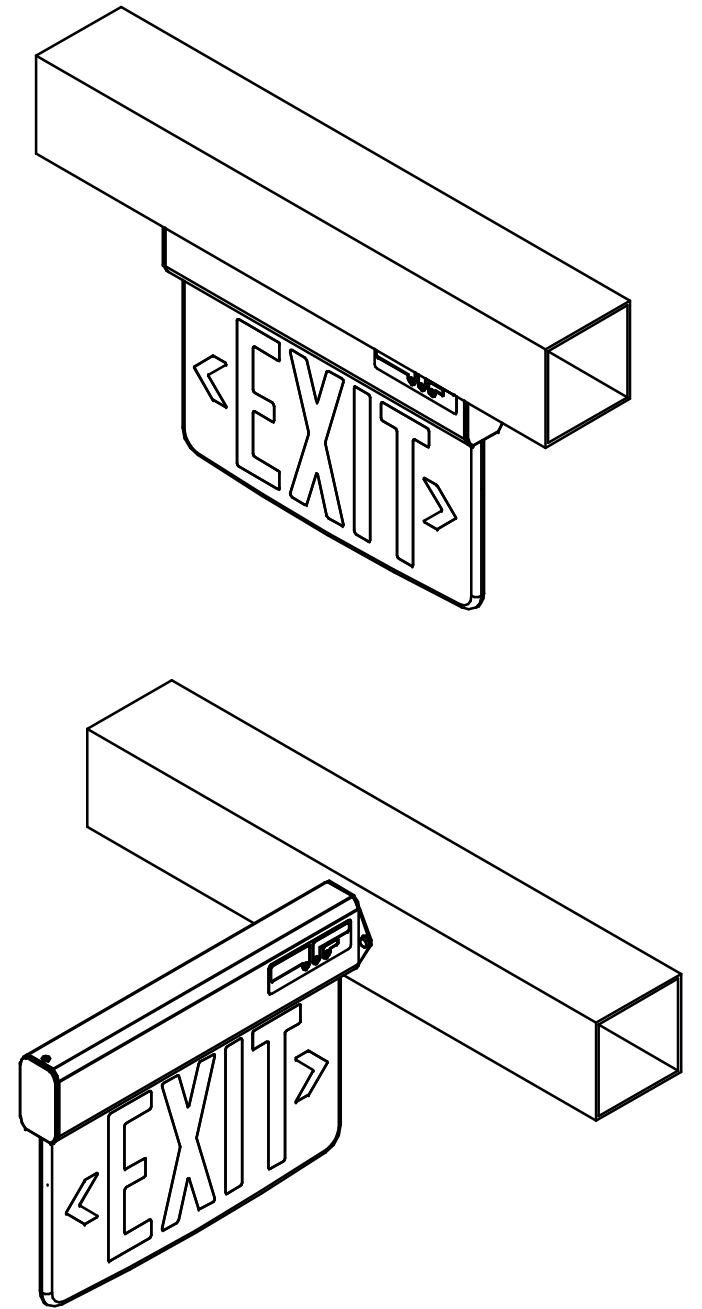
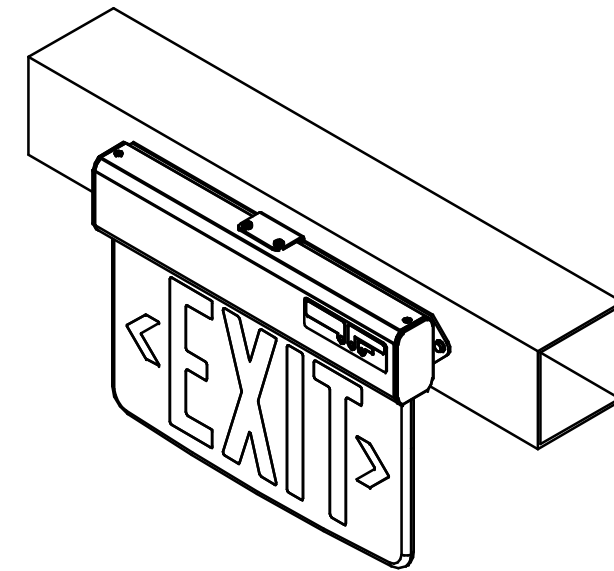
5. Push extra wire and wire nuts into the Mullion.

6. Install the unit to the mullion using appropriate hardware (not provided).



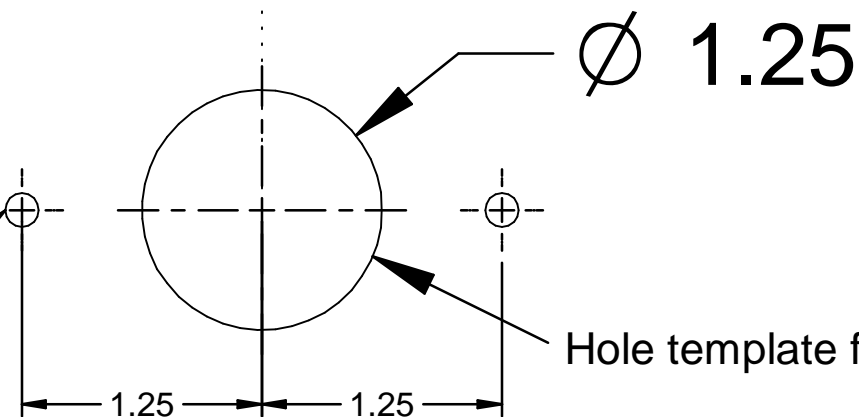
Special Wording option SW142 (EXIT INVERTED TEXT) or SW165 (SALIDA INVERTED TEXT) can be used for mounting the unit in inverted position.

This kit is to be used only with LES with End Mount option.



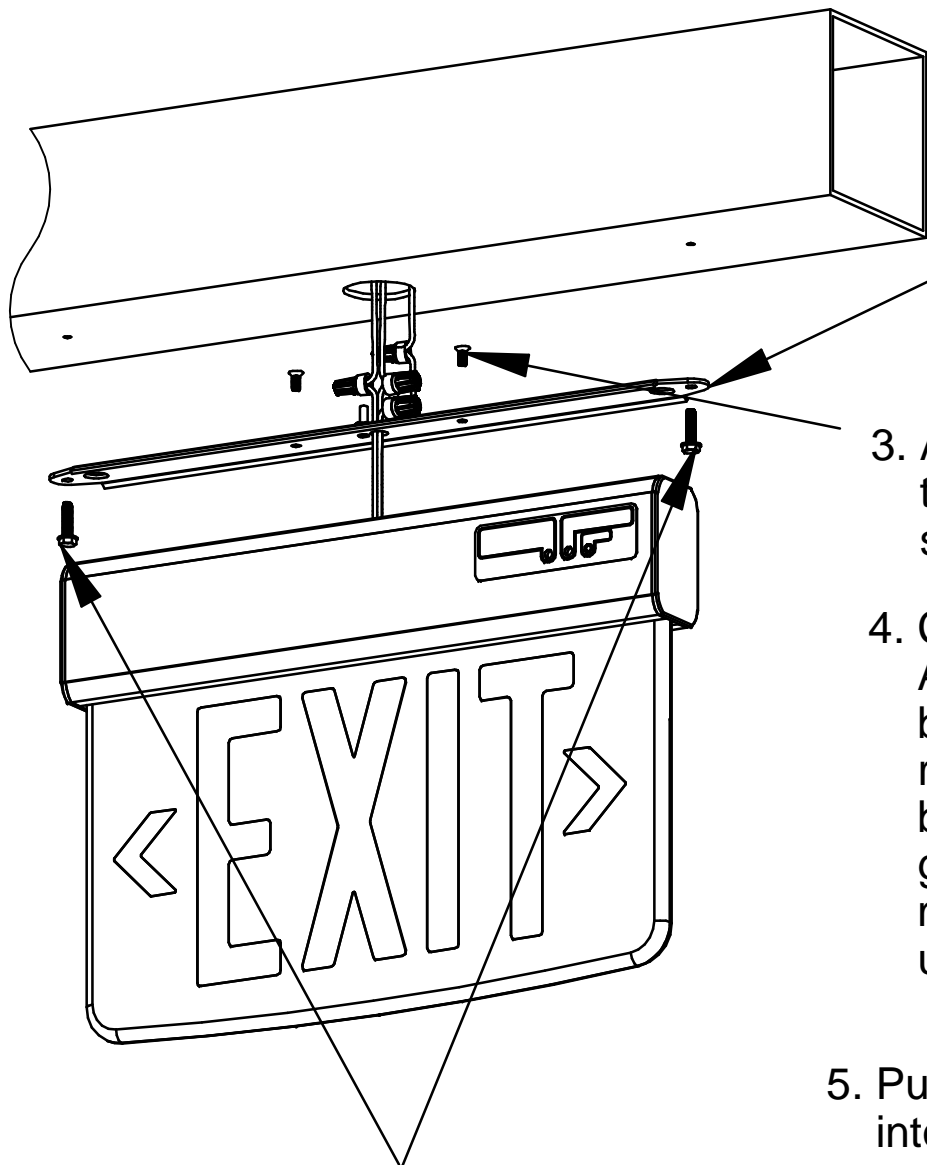
See other side of the sheet for hole template for END MOUNT.

Hole size based on mounting hardware

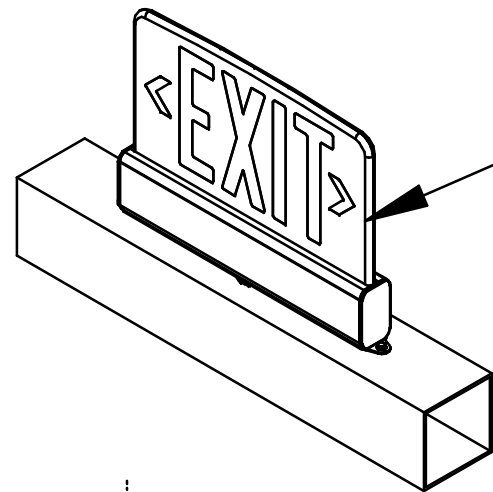


Hole template for END MOUNT

SURFACE MOUNT LES MULLION KIT



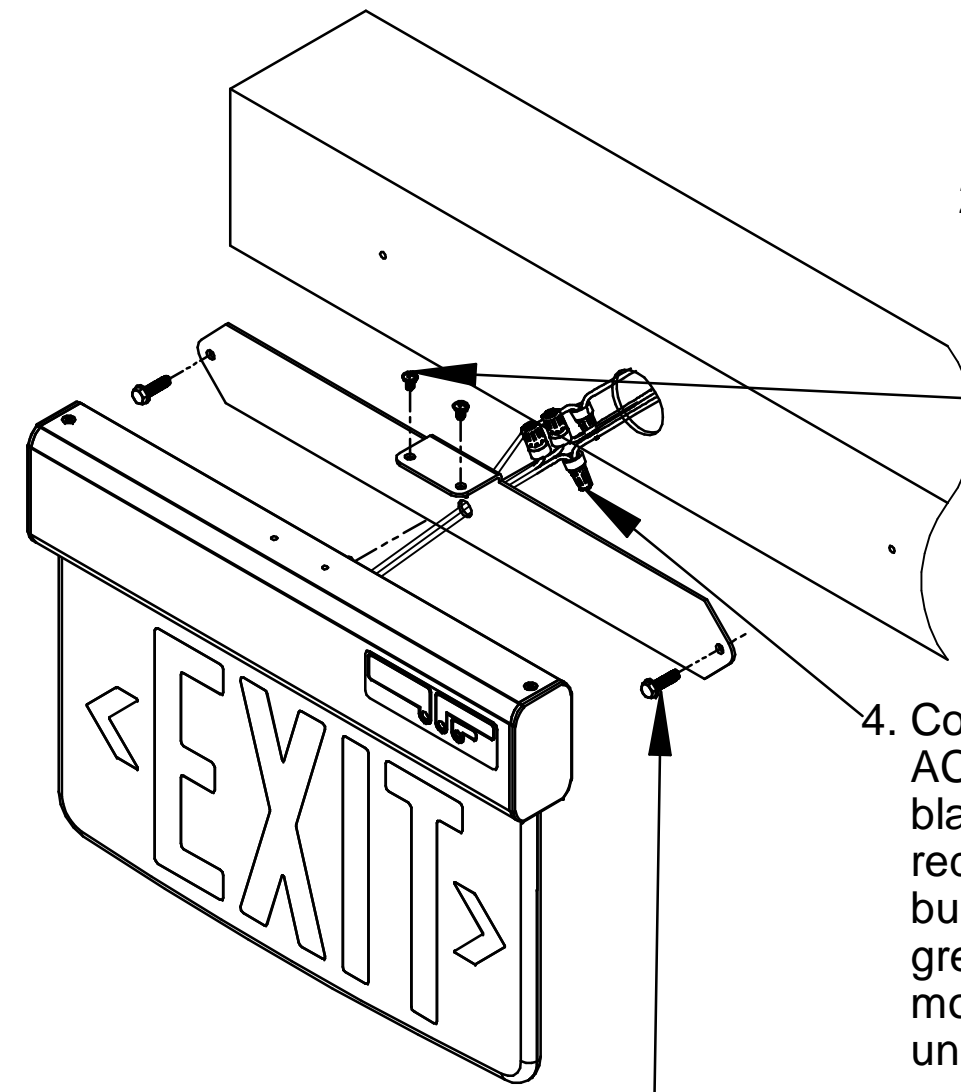
1. Remove the canopy from the unit.
2. Run the wires from the unit through the mullion mounting bracket.
3. Attach the mounting bracket to the unit using the two 8-32 screws provided with the kit.
4. Connect fixture leads with AC input conductors (use black wire for 120V and red wire for 277v). Connect building ground wire to the green wire connected to the mounting bracket. Terminate unused wire with wire nut.
5. Push extra wire and wire nuts into the Mullion.
6. Install the unit to the mullion using appropriate hardware (not provided).



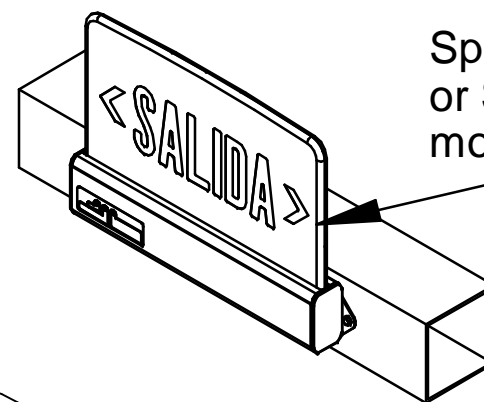
Special Wording option SW142 (EXIT INVERTED TEXT) or SW165 (SALIDA INVERTED TEXT) can be used for mounting the unit in inverted position.

This kit is to be used only with LES with Ceiling Mount option.

WALL MOUNT LES MULLION KIT



1. Remove the canopy from the unit.
2. Run the wires from the unit through the mullion mounting bracket.
3. Attach the mounting bracket to the unit using the two 8-32 screws provided with the kit.
4. Connect fixture leads with AC input conductors (use black wire for 120V and red wire for 277v). Connect building ground wire to the green wire connected to the mounting bracket. Terminate unused wire with wire nut.
5. Push extra wire and wire nuts into the Mullion.
6. Install the unit to the mullion using appropriate hardware (not provided).



Special Wording option SW142 (EXIT INVERTED TEXT) or SW165 (SALIDA INVERTED TEXT) can be used for mounting the unit in inverted position.

This kit is to be used only with LES with Wall Mount option.

