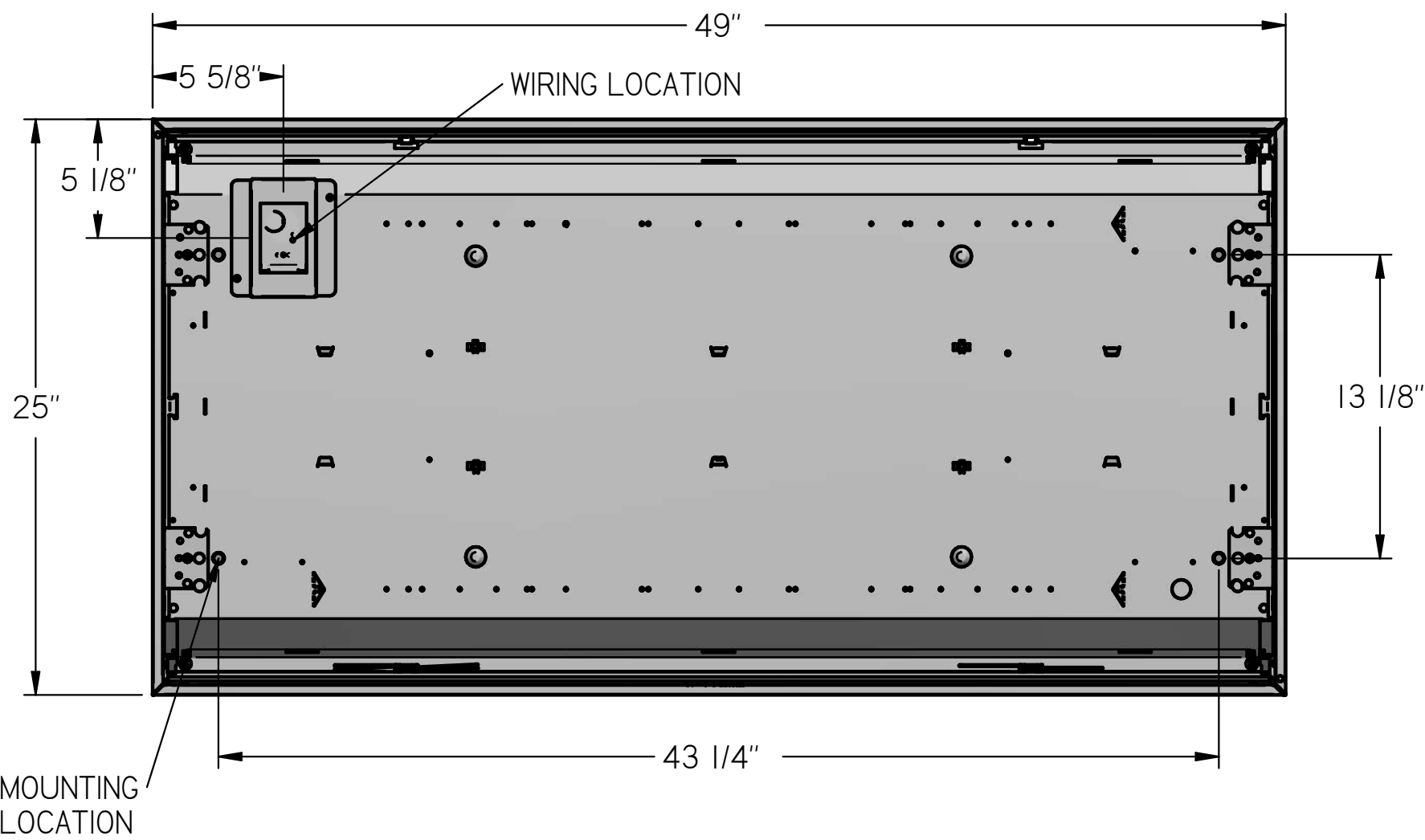
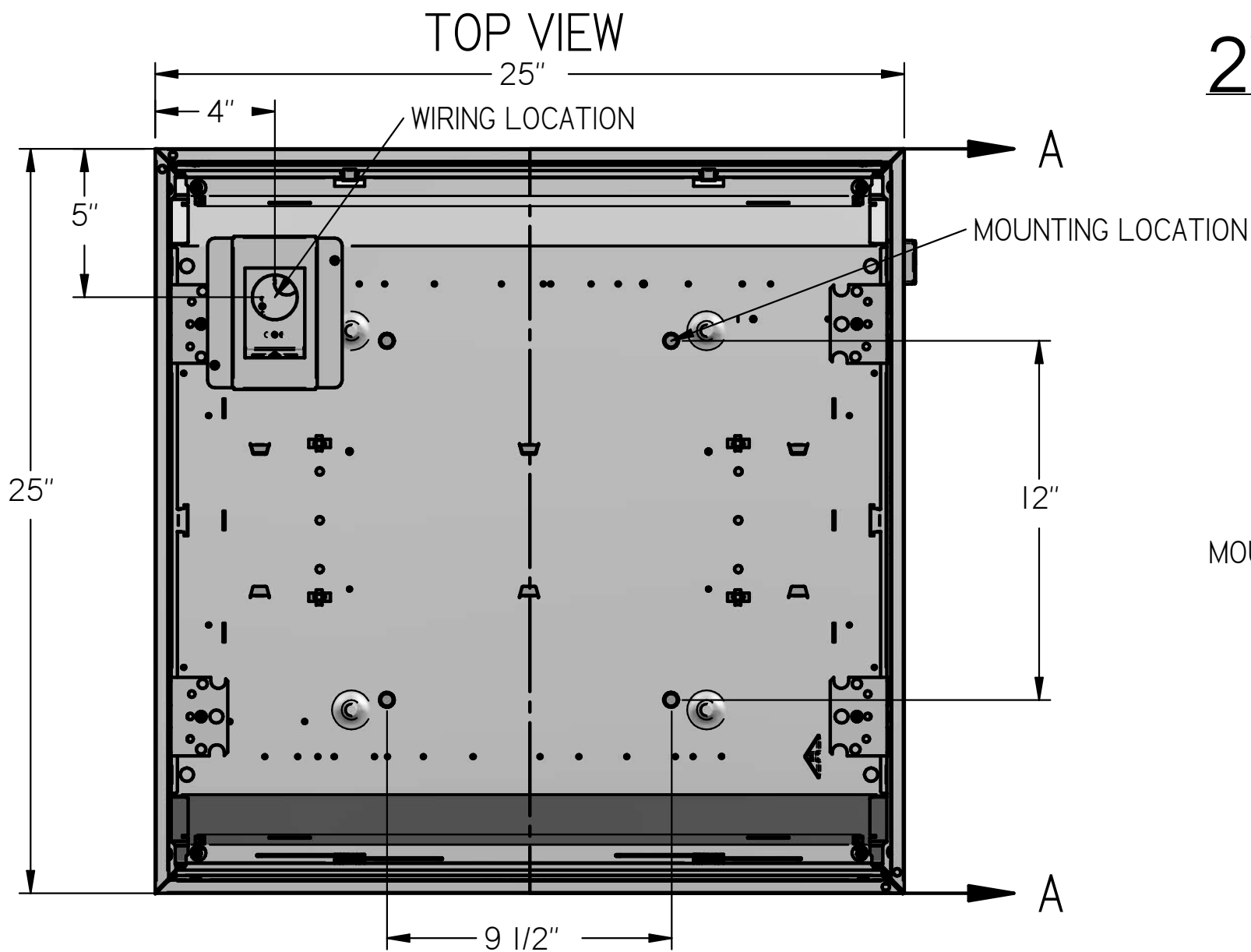
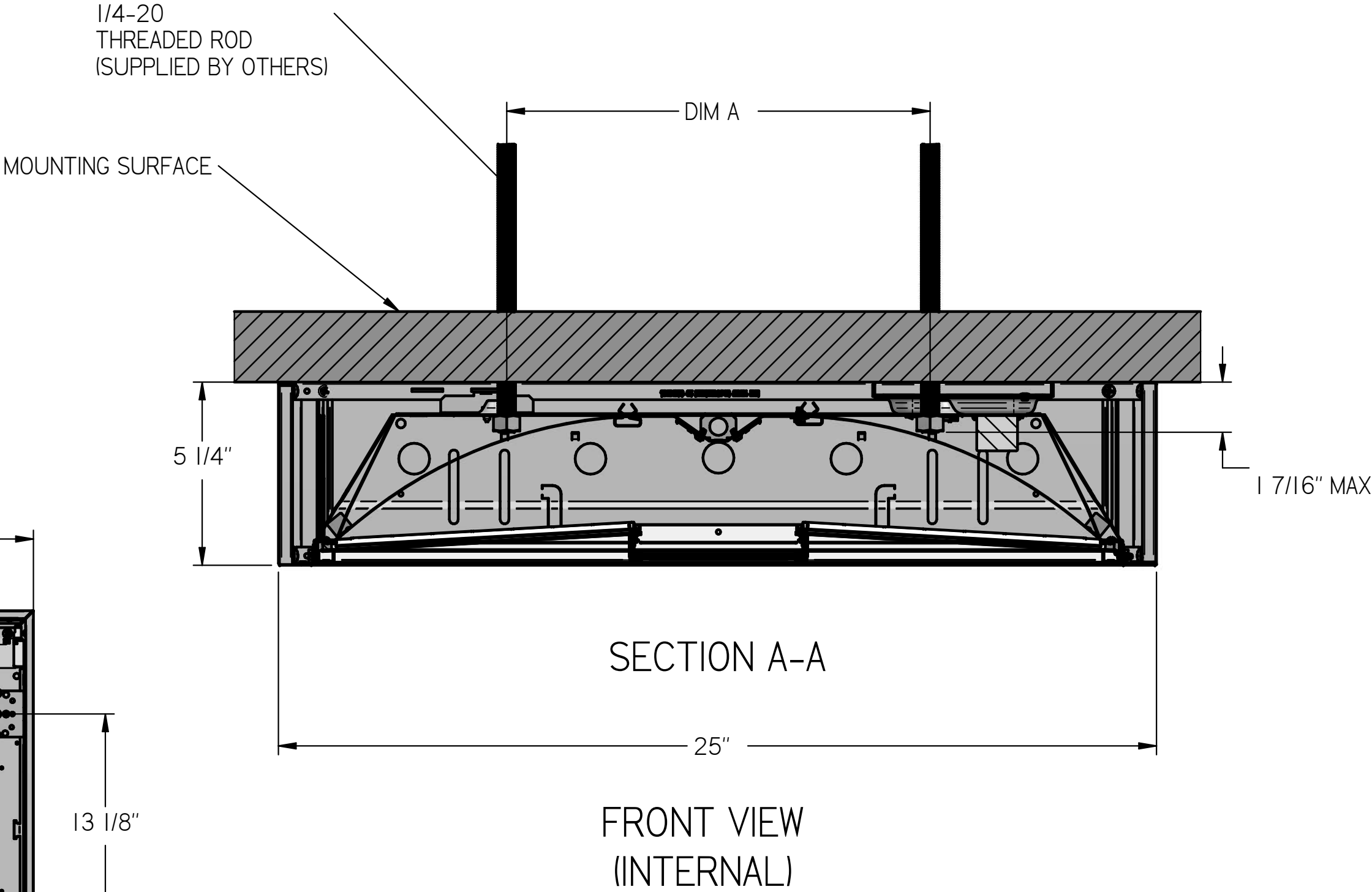


2X2 & 2X4 SURFACE FIXTURE



DIMENSION A	
LENGTH	FIXTURE SIZE
12"	2X2
13 1/8"	2X4



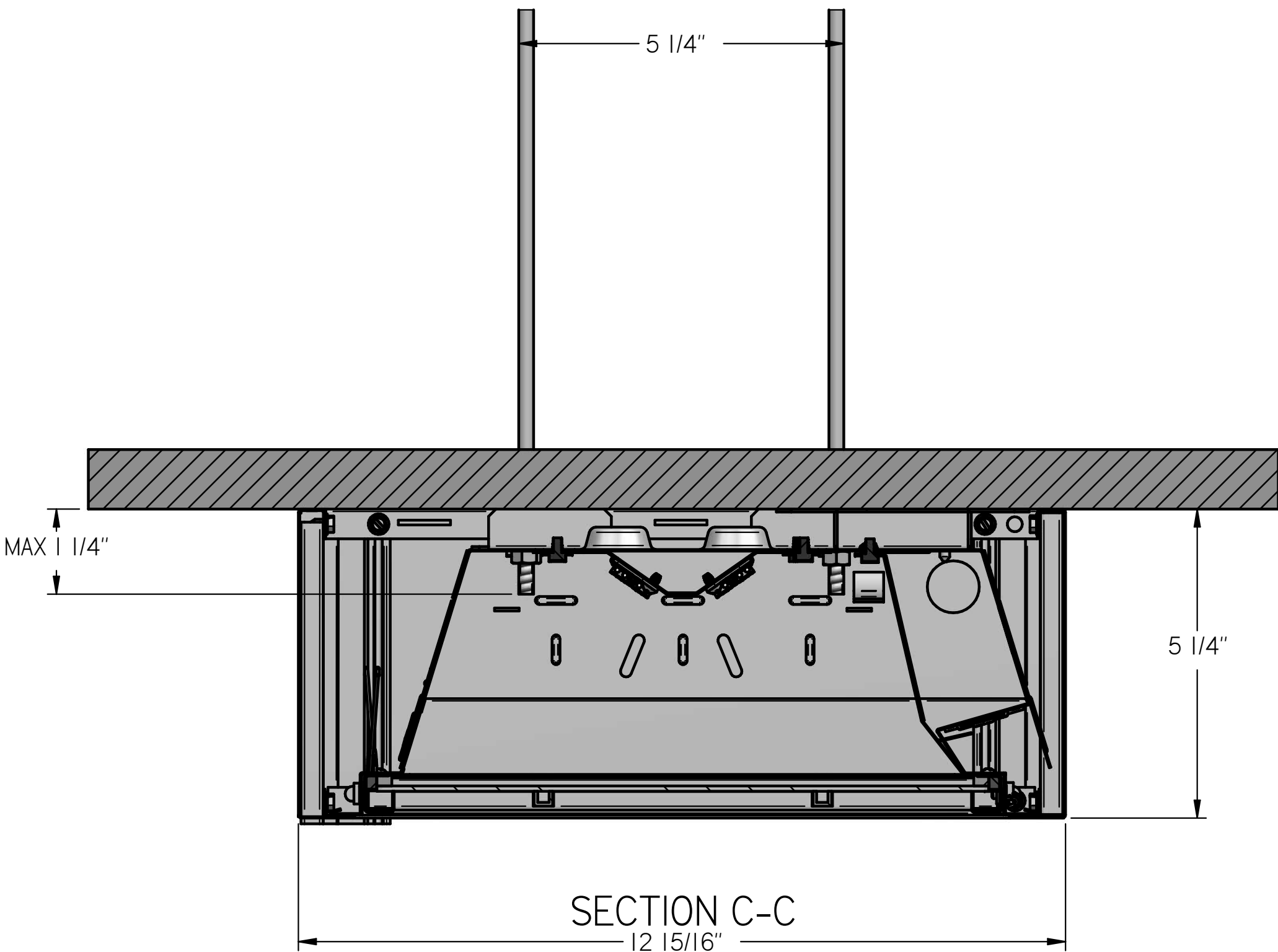
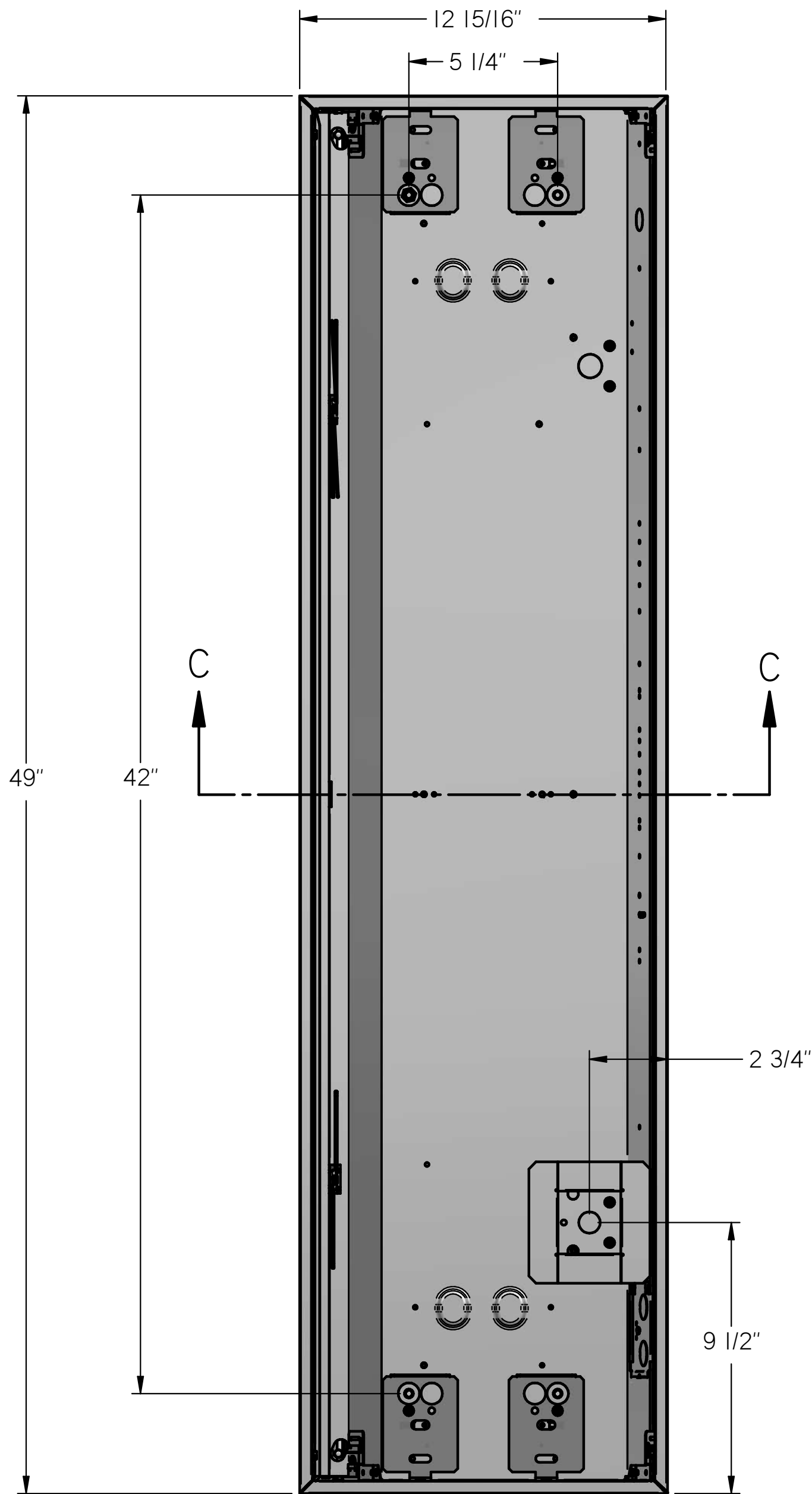
GENERAL NOTES:

- 1) FOR 2X2 & 2X4 FIXTURES, THREADED RODS CANNOT PROTRUDE MORE THAN 1 7/16" BELOW CEILING SURFACE.
- 2) REFER TO COMPONENT REPLACEMENT GUIDE 93166200 FOR INFORMATION ON REPLACING INTERNAL COMPONENTS.
- 3) IF APPLICABLE, REMOVE DOOR STRAPPING AFTER FIXTURE IS FULLY INSTALLED.

TOOLS REQUIRED	SUPPLIED BY INSTALLER
	-FOUR 1/4-20 THREADED RODS (OR EQUIVALENT) -FOUR 1/4-20 NUTS -JBOX

IX4 SURFACE FIXTURE

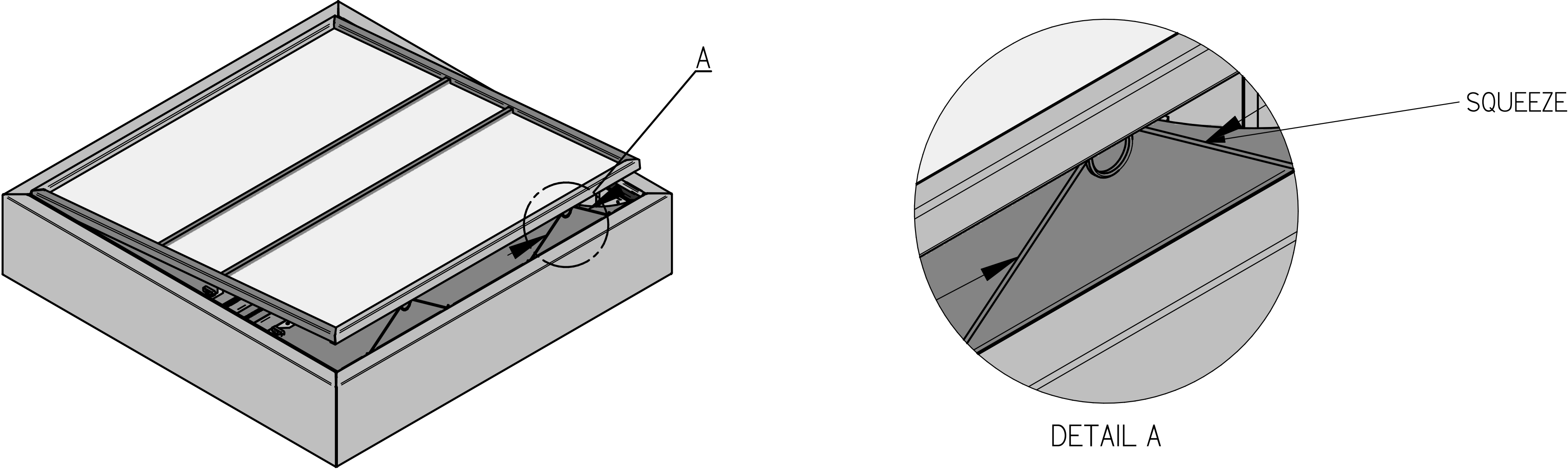
TOP VIEW



GENERAL NOTES:

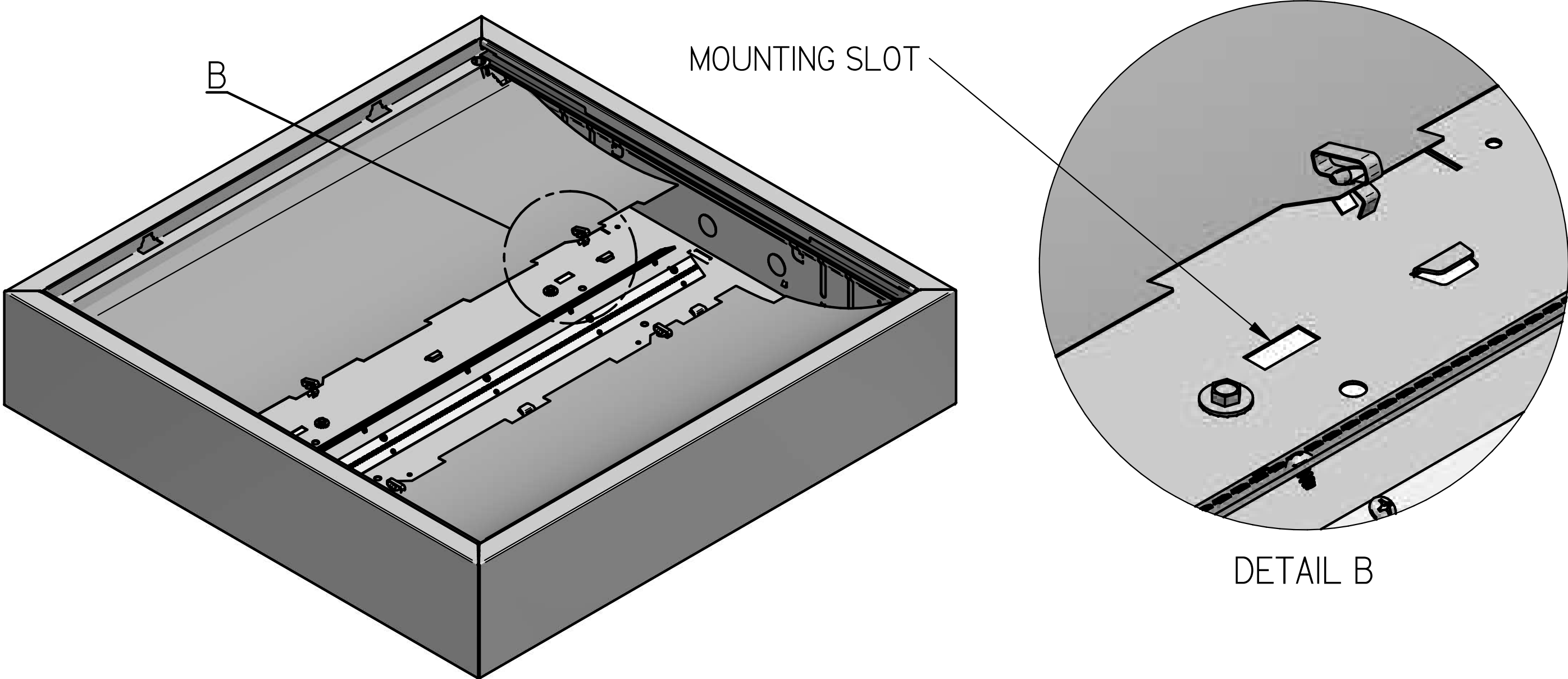
I) FOR 2X2 & 2X4 FIXTURES, THREADED RODS CANNOT PROUDE MORE THAN 1 7/16" BELOW CEILING SURFACE.

1



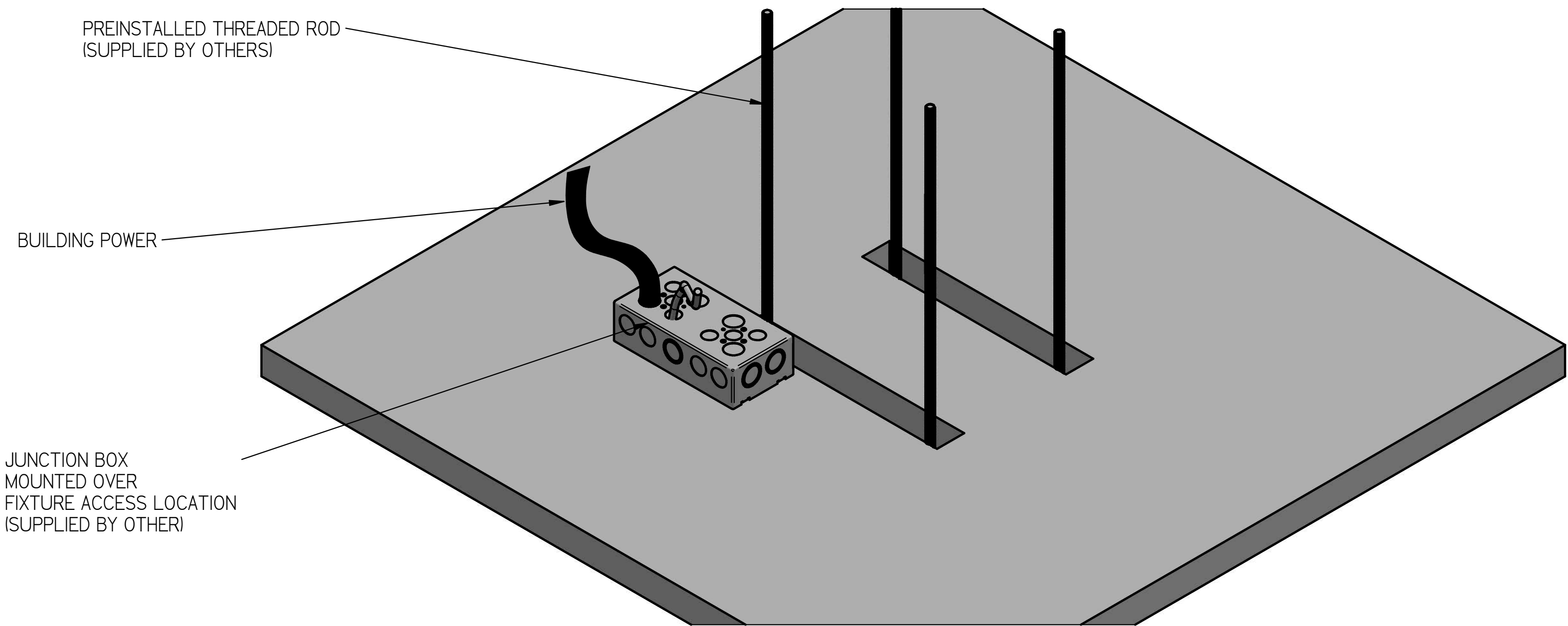
GENTLY BUT FIRMLY PULL ON ONE OF THE SIDES PARALLEL TO THE CENTER CHANNEL UNTIL THE DOOR STARTS TO SEPERATE FROM THE HOUSING. FOR REFERENCE, THE TORSION SPRINGS ARE OPPOSITE TO THE ACCESS COVER SIDE. PULL THE DOOR OPEN UNTIL STOPPED BY THE END OF THE TORSION SPRINGS. SQUEEZE IN ON BOTH SIDES OF THE TORSION SPRINGS TO RELEASE DOOR FROM HOUSING. REMOVE DOOR FROM FIXTURE AND SET ASIDE

2



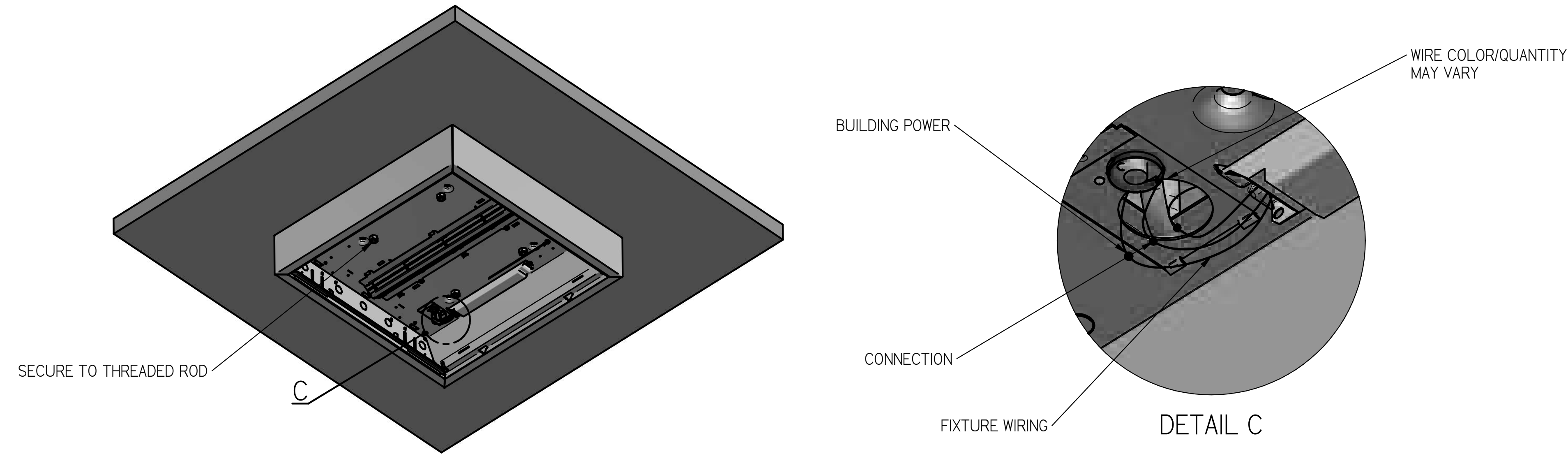
REMOVE BOTH REFLECTORS FROM THE FIXTURE BY ROTATING THE SPRING CLIPS 90 DEGREES LEFT OR RIGHT. GENTLY PULL UPWARDS ON THE SPRING CLIPS. WHEN CLIPS CLEAR THEIR MOUNTING SLOT, PULL REFLECTOR TOWARDS THE CENTER OF THE FIXTURE AS SHOWN TO REMOVE. REPEAT ON THE SECOND REFLECTOR

3



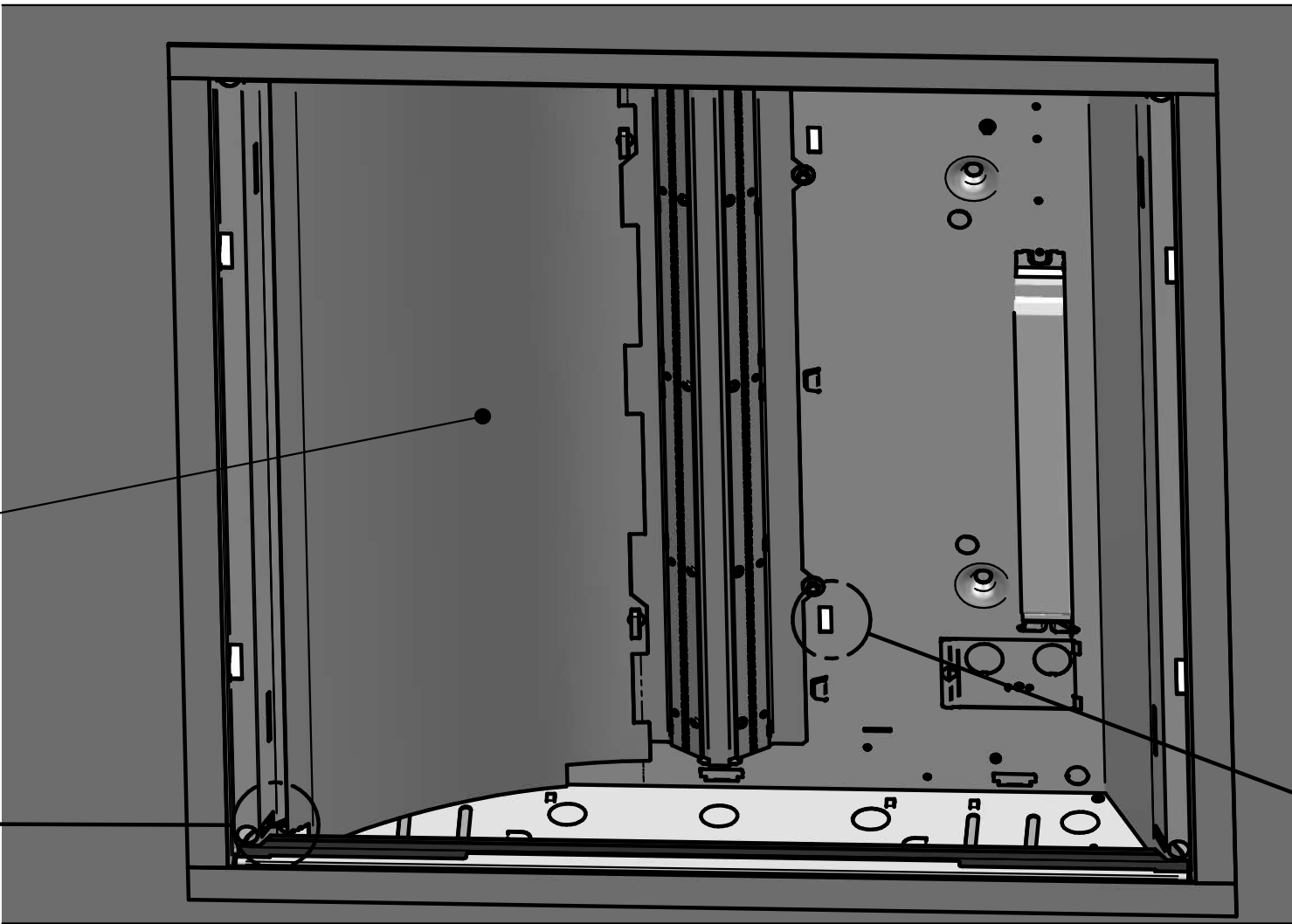
REFER TO SHEETS 1 AND 2 FOR DIMENSIONS TO PROPERLY INSTALL THREADED RODS (SUPPLIED BY OTHERS) OR OTHER MOUNTING SUPPORT INTO CEILING. PREINSTALL JBOX INTO CEILING AND RUN BUILDING POWER INTO JBOX.

4



SECURE FIXTURE TO THREADED RODS. CONNECT THE FIXTURE TO BUILDING POWER AND TUCK ACCESS WIRES INTO PREINSTALLED JBOX.

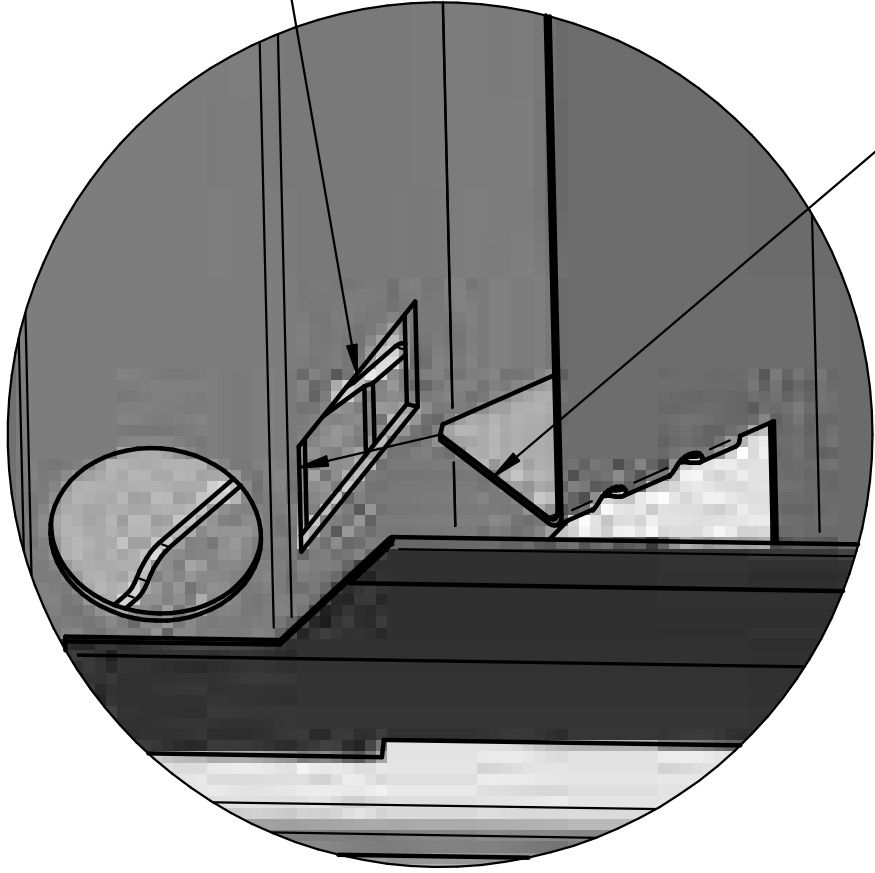
5



PUSH ON CENTER TO FORM

D

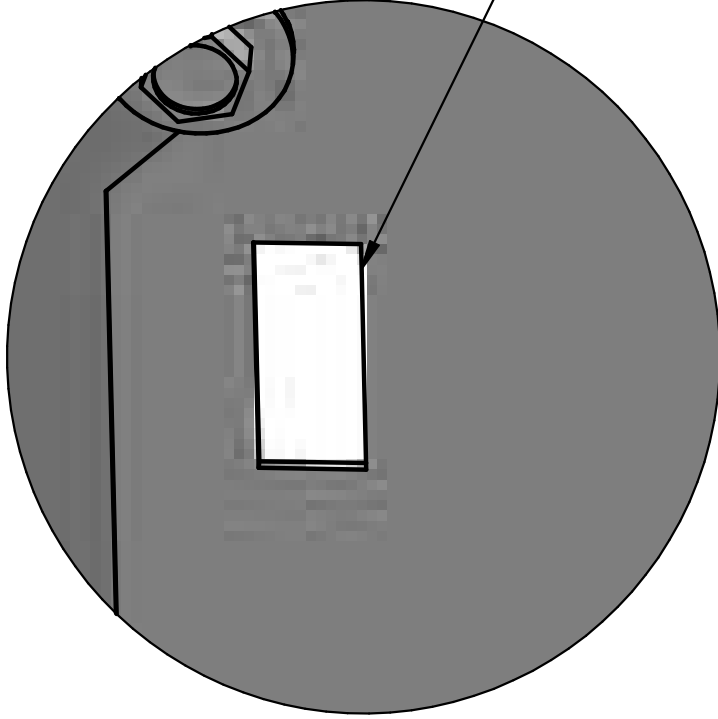
E



MOUNTING SLOT IN HOUSING

REFLECTOR TAB

DETAIL D

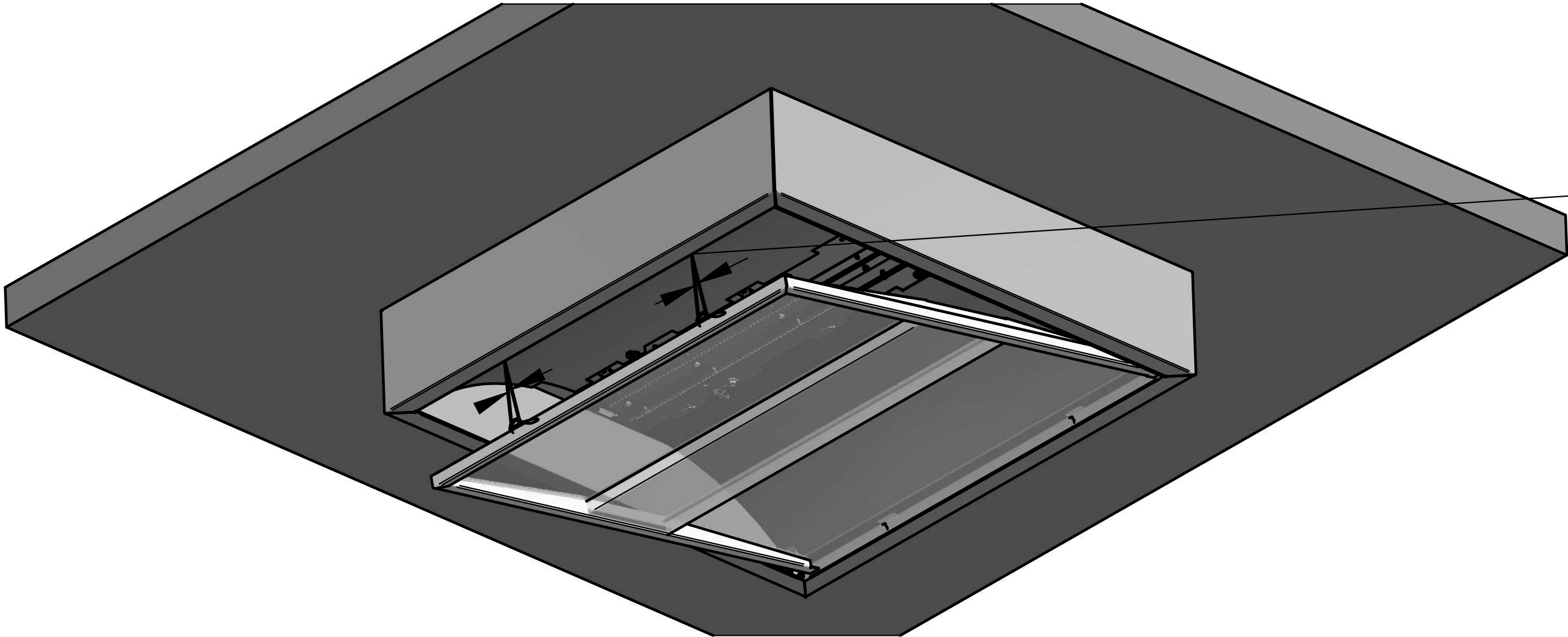


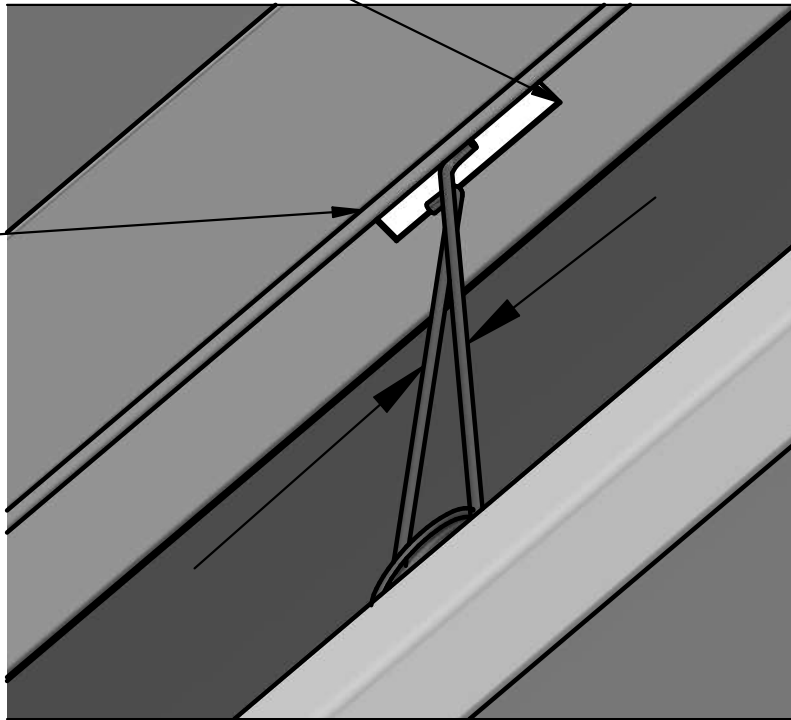
SPRING CLIP MOUNTING SLOT (BOTH SIDES)

DETAIL E

TO REINSTALL, INSERT FLAT REFLECTOR BACK INTO FIXTURE AND INSERT BOTH TABS ON EACH END INTO THE MOUNTING SLOTS IN THE HOUSING. WHILE HOLDING THE REFLECTOR IN PLACE, AND WITH THE SPRING CLIPS PARALLEL TO THE LED BOARDS, GENTLY APPLY PRESURE ON THE CENTER OF THE REFLECTOR UNTIL THE CLIPS SIT IN THEIR RESPECTED SLOTS. ONCE EACH CLIP IS IN PLACE ROTATE 90 DEGREES IN EITHER DIRECTION TO SECURE THE REFLECTOR. REPEAT ON SECOND REFLECTOR

6





TORSION SPRING SLOT

REATTACH THE DOOR TO THE FIXTURE BY HOOKING THE HINGES INTO PLACE. CLOSE THE DOOR BY SIMPLY COMPRESSING THE SPRINGS UNTIL THEY CAN CLEAR TORSION SPRING SLOTS IN THE HOUSING ALLOW SPRINGS TO DECOMPRESS IN THE SLOTS. AS YOU GENTLY PUSH THE DOOR TO THE CLOSED POSITION, THE SPRINGS WILL BEING TO ENGAGE AND SNAP DOOR SHUT. ONCE FULLY INSTALLED, REMOVE STRAPPING BY CUTTING ONE END AND PULLING BUCKLED END THROUGH THE FIXTURE.