

⚠ WARNING: Fixtures must be grounded in accordance with local codes or the National Electrical Code. Failure to do so may result in serious personal injury.

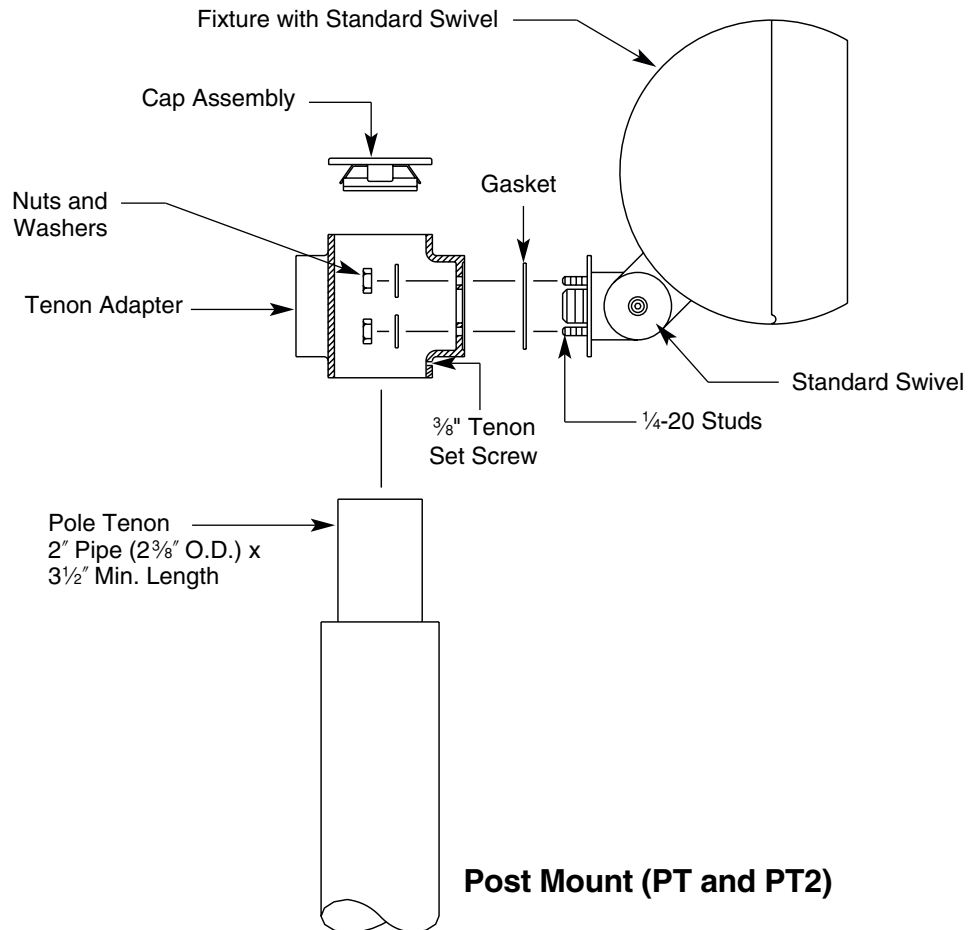
NOTE: Mounting options PT, PT2, SPT, SPM, M2B, and TM2 are intended for use only on AFL10 Series fixtures. Components will not support size and weight of large AFL Series (AFL 20 Series).

CAUTION: All wiring must be done by a qualified electrician. KEEP THIS SHEET FOR FUTURE REFERENCE.

Post Mount (PT and PT2)

Tools Required:

- 3/32" Allen Wrench
- 3/16" Allen Wrench
- 1/8" Allen wrench
- 7/16" Socket and Ratchet



STANDARD SWIVEL MOUNTING INSTRUCTIONS: **⚠** Make sure electricity is **OFF** before starting installation.

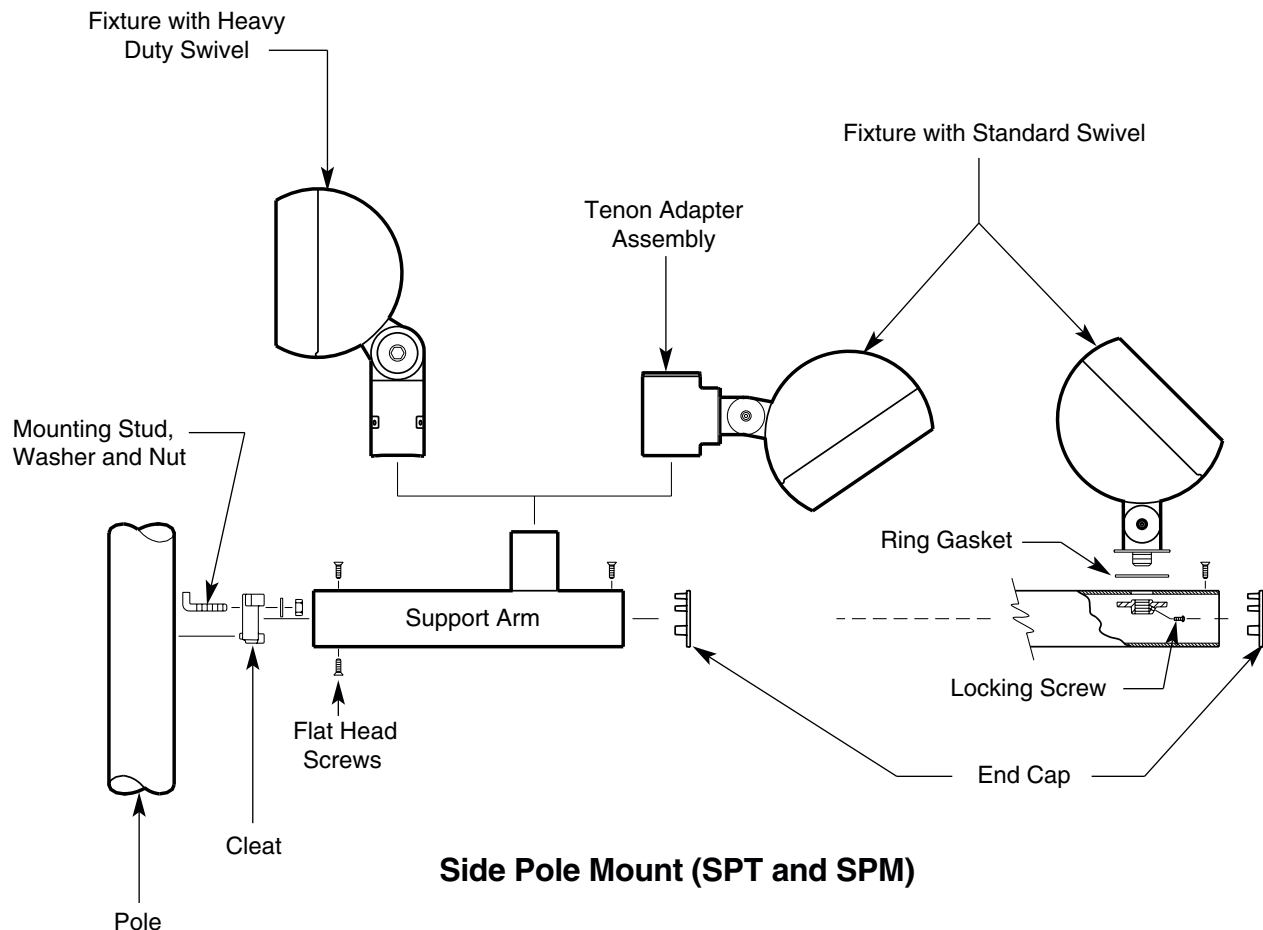
1. Attach 1/4-20 studs to swivel.
2. Install fixture to tenon adapter and torque nuts to 10 foot-pounds.
3. Slide tenon adapter assembly over pole tenon.
4. Orient fixture to desired direction and tighten set screws. Torque set screws to 10 foot-pounds. **To prevent windmilling, remove one tenon screw, drill 3/8" dia. recess in tenon for screwpoint, and replace screw.**
5. Make all wiring connections observing polarity, i.e., green-to ground, white-to-common, and black-to-voltage.
6. See fixture installation instructions (Part No. 95416) for swivel adjustment.
7. Attach cap assembly.

Side Pole Mount (SPT and SPM)

Tools Required: 3/32" Allen Wench 9/16" Wrench 1/8" Allen Wrench
 7/16" Diameter Drill 3/16" Allen Wrench 5/8" Diameter Drill

STANDARD SWIVEL MOUNTING INSTRUCTIONS:  Make sure electricity is **OFF** before starting installation.

1. Position hole template on pole (see detail on back), orient to desired position and drill holes. Deburr wireway hole. (For poles by others).
2. Insert mounting stud through cleat. Feed stud through top hole on pole and tighten nut securely. Torque to 15 foot-pounds.
3. Fish wires through wireway.
4. Slide arm over cleat and install (3) flat head screws supplied. Tighten the two top screws to 10 foot-pounds, then tighten bottom screw. For Heavy Duty Swivel **to prevent windmilling, remove one tenon set screw, drill 3/8" dia. recess in tenon for screwpoint, and replace screw.**
5. **For SPT:** Attach fixture to tenon adapter as per Post Mount instructions (see above).
For SPM: Attach fixture to arm as per Twin Mount (TM2) instructions (see reverse).



Side Pole Mount (SPT and SPM)

HEAVY DUTY SWIVEL MOUNTING INSTRUCTIONS:

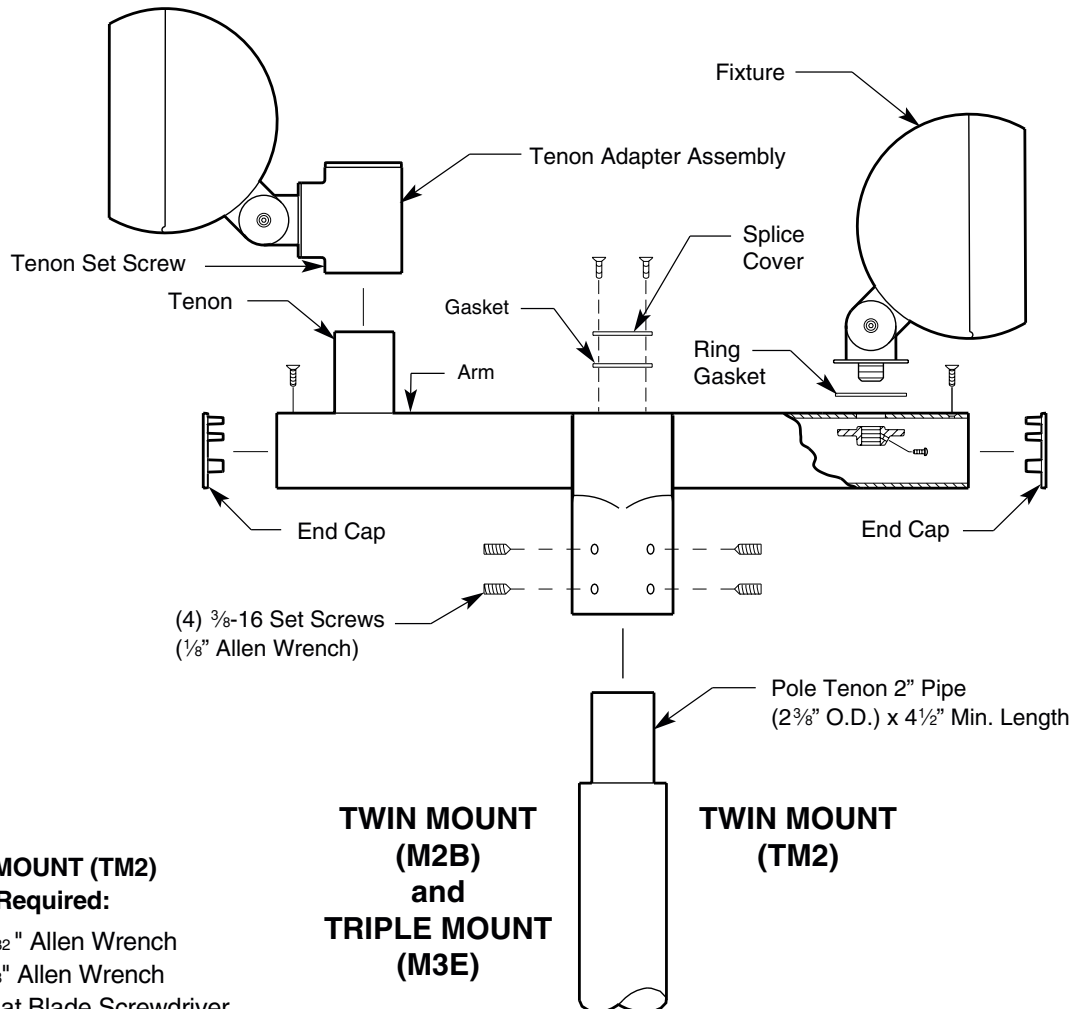
1. Follow directions for Side Pole Mount Standard Swivel Mounting Instructions (above) and attach fixture as per Twin Mount (M2B) instructions (see reverse).

TWIN MOUNT (M2B) and TRIPLE MOUNT (M3E) (Typical Installation)

Tools Required: Flat Blade Screwdriver 3/32" Allen Wrench 1/8" Allen Wrench

MOUNTING INSTRUCTIONS: ⚠ Make certain electrical supply is **OFF**.

1. Fish wires through arm.
2. Place arm over pole tenon, orient in desired direction and tighten set screws. Torque screws to 10 foot-pounds. **To prevent windmilling, remove one tenon set screw, drill 3/8" dia. recess in tenon for screwpoint, and replace screw.**
3. Attach fixture to tenon adapter as per post top mounting instructions on previous page.
4. Attach end caps.
5. See fixture installation instructions for swivel adjustment.



TWIN MOUNT (TM2)

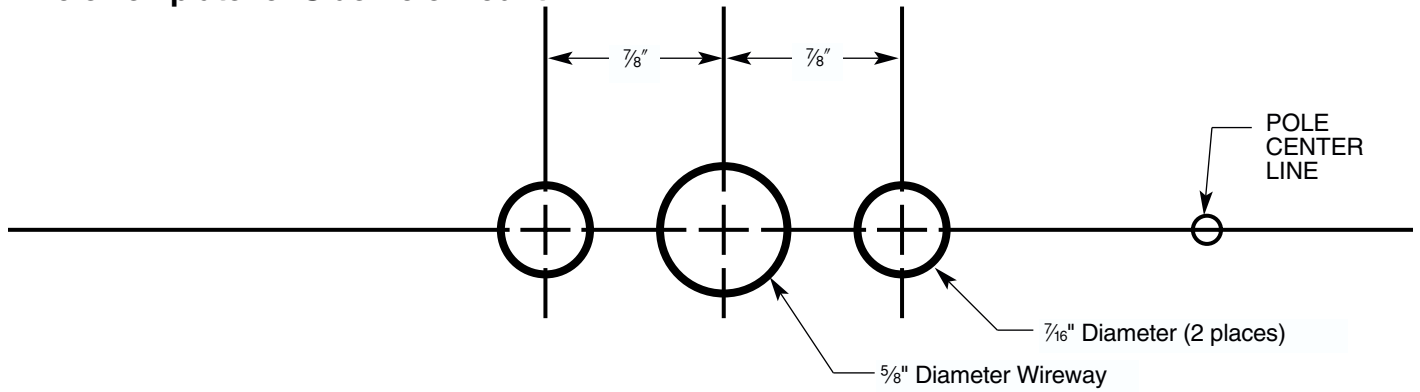
Tools Required:

- 3/32" Allen Wrench
- 1/8" Allen Wrench
- Flat Blade Screwdriver

MOUNTING INSTRUCTIONS: ⚠ Make certain electricity supply is **OFF**.

1. Fish wires through arm.
2. Place arm over pole tenon, orient in desired direction and tighten set screws. Torque screws to 10 foot-pounds. **To prevent windmilling, remove one tenon set screw, drill 3/8" dia. recess in tenon for screwpoint, and replace screw.**
3. Screw fixture into arm. Make sure swivel makes contact with gasket, orient in desired direction and tighten locking screw inside arm.
4. Make all wiring connections observing polarity, i.e.; green-to-ground, white-to-common and black-to-voltage.
5. Attach end caps.
6. See fixture installation instructions for swivel adjustment.

Hole Template for Side Pole Mount



For warranty see: currentlighting.com/kimlighting