



Anchor Bolt Installation Guide - Compact Bollard

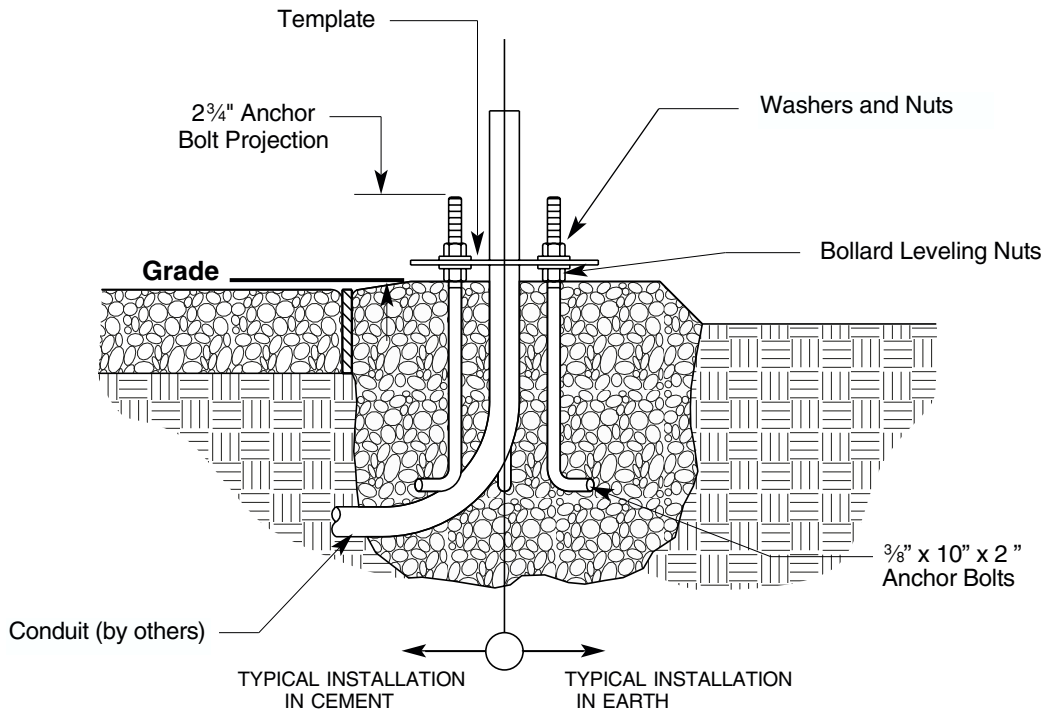
KEEP THIS SHEET FOR FUTURE REFERENCE.

INSTALLATION INSTRUCTIONS:

1. Dig an adequate hole for anchor bolts. Place leveling nuts onto anchor bolts; follow with washers, template, washers and nuts. Place assembly in hole.
2. Secure anchor bolt assembly in approximate location. Fill hole with concrete (*see note, below*).
3. Bollard installation instructions will be supplied with bollard.

Note: Concrete foundation to be designed according to local soil conditions.

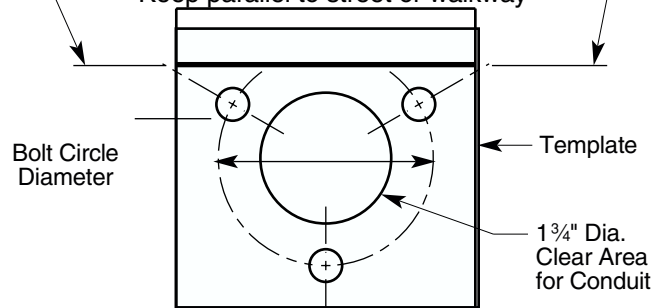
ANCHOR BOLT GUIDE:



Template Orientation:

Longitudinal Reference Line

Keep parallel to street or walkway



Fixture Catalog Number	Bolt Circle Diameter	Template Part Number
CB24 / CB32 EL150 / KLV150	2 7/8"	96066

Anchor Bolt Installation Guide - Compact Bollard

KIM LIGHTING LIMITED WARRANTY

When installed in accordance with Kim Installation Instructions and accepted trade practices, the following shall apply:

General Product Limited Warranty Coverage

All material and component parts used in the manufacture of Kim Products, are warranted to be free from defects of material and/or workmanship for a period of 1 year from date of sale, with the following exceptions:

Auxiliary Equipment

All auxiliary equipment (such as lamps, ballasts, and transformers) provided by and/or included in Kim Products shall carry the component manufacturer's warranty.

Copper and Bronze Landscape Components

Copper and Bronze Landscape fixture components shall be warranted against defects of material and/or workmanship, and failure due to corrosion, for a period of 25 years from date of sale.

Composite In-Grade Components

Composite In-Grade fixture components installed below grade, shall be warranted against defects of material and/or workmanship, and failure due to corrosion, for a period of 7 years from date of sale.

Aluminum Landscape Components

Aluminum Landscape fixture components not in direct contact with soil, shall be warranted against defects of material and/or workmanship for a period of 3 years from date of sale. Aluminum fixture components in direct contact with soil shall be warranted from defects of material and failure from corrosion for a period of 1 year from date of sale.

Limit of Liability and General Conditions

Only products which are installed, used and maintained in accordance with applicable Kim instructions, specifications, and accepted trade practices, are covered by the Kim Warranty. During the warranty period, with proof of purchase, Kim will repair or replace with the same or similar product, at Kim's option, without charge. Labor costs are the owner's responsibility and are excluded from this warranty. This warranty is void if the product is modified, tampered with, misapplied, poorly installed, improperly maintained, or subjected to abnormal conditions.

Repair or replacement as provided under this warranty is the exclusive remedy of the purchaser. This warranty is in lieu of all other warranties, expressed or implied, including any implied warranty of fitness for a particular application. Kim Lighting shall not be liable to the purchaser for indirect or consequential damages.



KIM LIGHTING

How may we serve you better?
Please let us know. Visit our website at:
www.kimlighting.com
Your concerns are important to us.