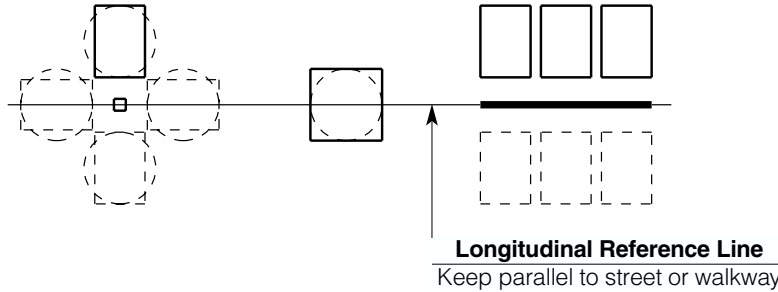


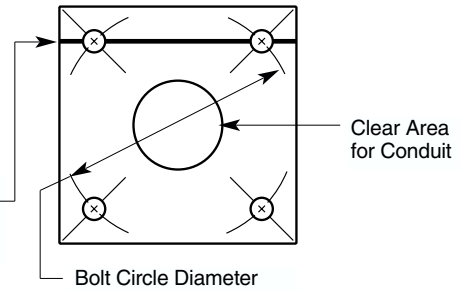
Anchor Bolt Installation Guide

KRS / KSS Poles

Fixture Mounting Orientation:

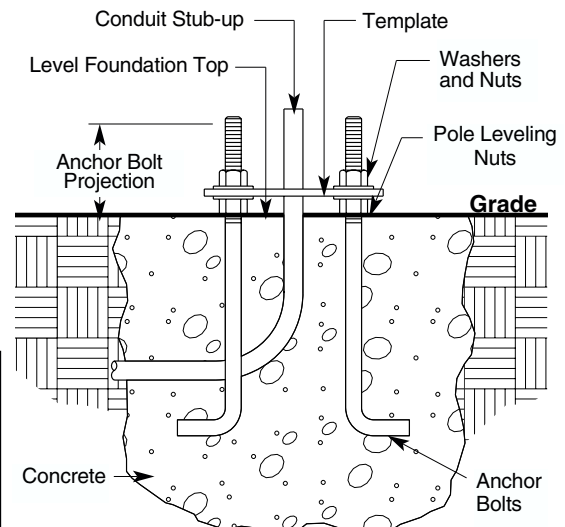


Template Orientation:



Pole Catalog Number	Template Number	Bolt Circle Dia.	Base Cover Size	Anchor Bolt Proj.	Anchor Bolt Size
KRS10-4120 KRS12-4120 KRS14-4120 KRS16-4120	96001	8½"	11⅞" dia.	3⅜"	¾" x 15" + 3"
KRS20-4120 KRS20-4180	96001	8½"	11⅞" dia.	3⅜"	¾" x 30" + 4"
KRS20-5120 KRS20-5180 KRS25-5120 KRS25-5180 KRS30-5180	96001	8½"	11⅞" dia.	3⅜"	¾" x 30" + 4"
KSS10-4120 KSS12-4120 KSS14-4120 KSS16-4120	96048	8"	8⅝" sq.	3⅜"	¾" x 15" + 3"
KSS20-4120 KSS20-4180 KSS25-4120 KSS25-4180	96048	8"	8⅝" sq.	3⅜"	¾" x 30" + 4"
KSS25-5120 KSS25-5180	96010	11"	12⅝" sq.	3⅞"	¾" x 30" + 4"
KSS30-4180	96048	8"	8⅝" sq.	3⅜"	¾" x 30" + 4"
KSS30-5180	96010	11"	12⅝" sq.	3⅞"	¾" x 30" + 4"

Pole Anchor Bolt Guide:



CONCRETE FOUNDATION TO BE DESIGNED ACCORDING TO LOCAL SOIL CONDITIONS.

NOTE: After pole is installed pole base **must** have full contact with foundation by grouting. Provide a channel through the grout for drainage from the pole interior.

Anchor Bolt Installation - KRS / KSS Poles

KIM LIGHTING LIMITED WARRANTY

When installed in accordance with Kim Installation Instructions and accepted trade practices, the following shall apply:

General Product Limited Warranty Coverage

All material and component parts used in the manufacture of Kim Products, are warranted to be free from defects of material and/or workmanship for a period of 1 year from date of sale, with the following exceptions:

Auxiliary Equipment

All auxiliary equipment (such as lamps, ballasts, and transformers) provided by and/or included in Kim Products shall carry the component manufacturer's warranty.

Copper and Bronze Landscape Components

Copper and Bronze Landscape fixture components shall be warranted against defects of material and/or workmanship, and failure due to corrosion, for a period of 25 years from date of sale.

Composite In-Grade Components

Composite In-Grade fixture components installed below grade, shall be warranted against defects of material and/or workmanship, and failure due to corrosion, for a period of 7 years from date of sale.

Aluminum Landscape Components

Aluminum Landscape fixture components not in direct contact with soil, shall be warranted against defects of material and/or workmanship for a period of 3 years from date of sale. Aluminum fixture components in direct contact with soil shall be warranted from defects of material and failure from corrosion for a period of 1 year from date of sale.

Limit of Liability and General Conditions

Only products which are installed, used and maintained in accordance with applicable Kim instructions, specifications and accepted trade practices, are covered by the Kim Warranty. During the warranty period, with proof of purchase, Kim will repair or replace with the same or similar product, at Kim's option, without charge. Labor costs are the owner's responsibility and are excluded from this warranty. This warranty is void if the product is modified, tampered with, misapplied, poorly installed, improperly maintained, or subjected to abnormal conditions.

Repair or replacement as provided under this warranty is the exclusive remedy of the purchaser. This warranty is in lieu of all other warranties, expressed or implied, including any implied warranty of fitness for a particular application. Kim Lighting shall not be liable to the purchaser for indirect or consequential damages.