



WARNING: Fixtures must be grounded in accordance with local codes or the National Electrical Code. Failure to do so may result in serious personal injury.

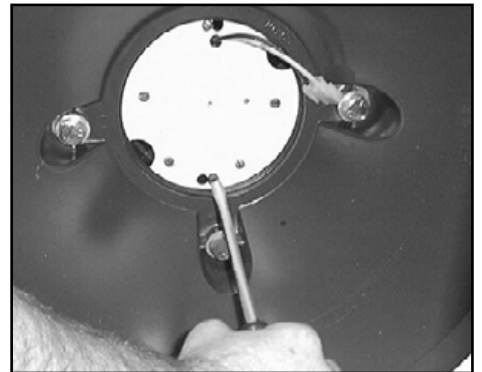
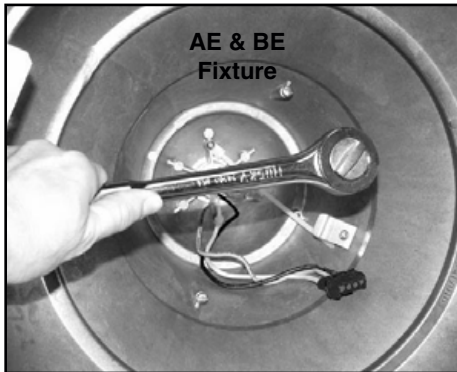
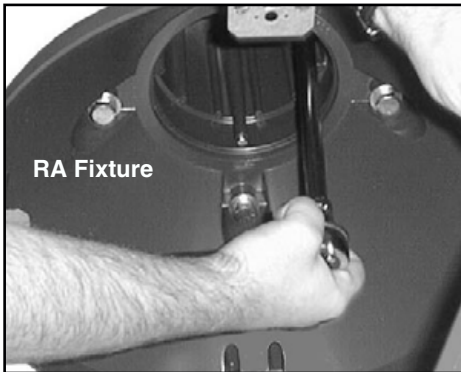
MAINTENANCE: A regularly scheduled maintenance program should be established to retain optimum light output and reduce heat retention. Dusting with a soft, clean, dry cloth is normally sufficient for the reflector. Any accumulation of dust or dirt should be removed regularly from both sides of the lens during relamping (using ammonia water). Do not use alkaline or acid cleaners on reflector surfaces.

NOTE: All electrical work must be done by a qualified electrician. **KEEP THIS SHEET FOR FUTURE REFERENCE.**

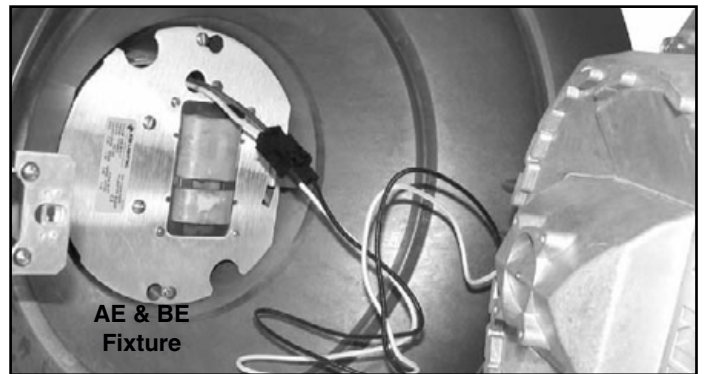
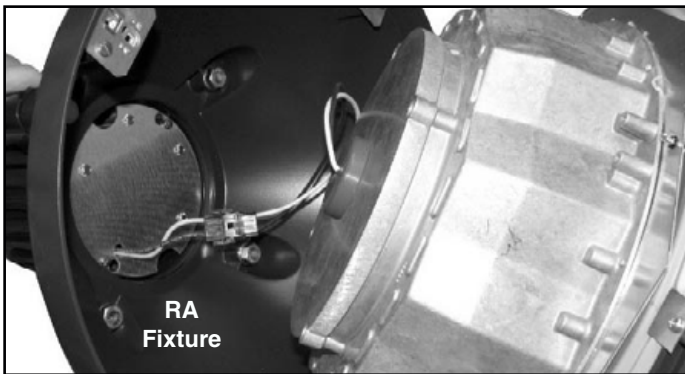
ATTENTION! If your fixture is equipped with a multi-tap ballast and if no voltage was specified on the purchase order, the ballast has been wired for operation on a 277 volt circuit (347V in Canada). If other than 277 volts is required, i.e.; 120V, 208V, 240V, connect incoming voltage lead to required voltage on terminal block.

- Tools Required:**
- Flat Head Screwdriver
 - Torque Wrench
 - 1/8" Hex Wrench
- For RA17, AE17, BE17** 9/16" 6- or 12- Point Deep (2" min.) Socket 12" (min.) Long Socket Extension
- For RA25, AE21, BE21** 3/4" 6- or 12- Point Deep (2" min.) Socket 20" (min.) Long Socket Extension

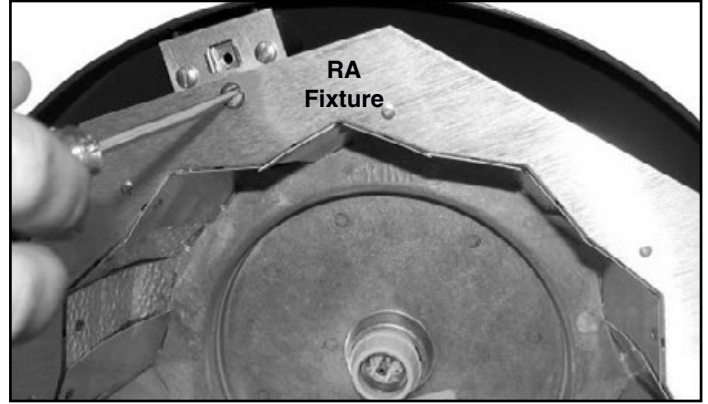
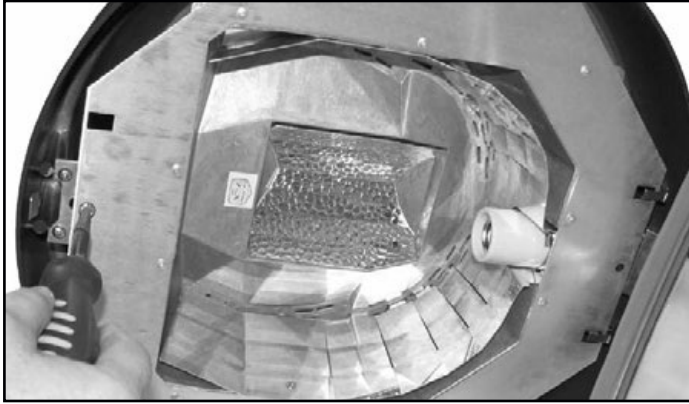
Installation Instructions: Make certain electrical supply is **OFF** before starting fixture installation.



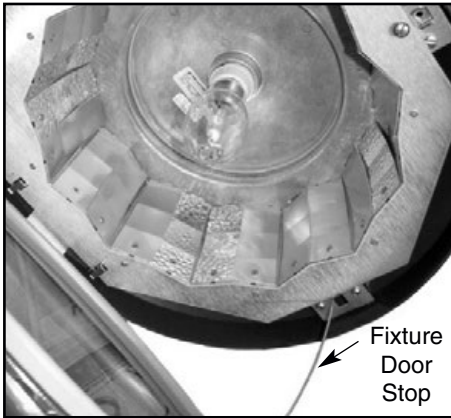
1. Install fixture head to arm with washers & nuts, tighten to 20 ft.-lbs.
IMPORTANT! - ORIENT "HINGE" SIDE OF FIXTURE TOWARDS POLE
2. Install ballast tray through key-holes, onto screws, tighten securely.



3. Hang reflector in housing in desired orientation, join wiring quick-disconnect and orient 1/4" turn fastener by moving it to position opposite hinge.



4. Secure reflector with ¼" turn fastener. **NOTE: Type 5 reflectors mount in one position.**



5. Install lamp of type and wattage shown on fixture label.



6. Close and secure fixture door.

WARNING:
This H.I.D. / Fluorescent fixture utilizes a lamp that may contain mercury. For information on disposal of lamp go to website: www.lamprecycle.org

For warranty see: currentlighting.com/kimlighting