

GENERAL NOTES: (READ SHEETS COMPLETELY BEFORE STARTING)

1. FIXTURES ARE PROVIDED WITH FACTORY-INSTALLED FIXTURE CIRCUIT WIRING. REFER TO SUPPLEMENTAL INSTRUCTION SHEET, 510401, WHEN MAKING CONNECTIONS.
2. ALL WALL FIXTURES REQUIRE TWO MOUNTING BRACKETS.
3. APPROXIMATE WEIGHT OF FIXTURE IS 1.25 LBS PER FOOT OF LENGTH.
4. ONE 2X4 JBOX IS REQUIRED ON THE LEFT SIDE OF THE FIXTURE OR ROW. OPTIONAL JBOXES HAVE TO BE MOUNTED BEHIND A FIXTURE MOUNTING POINT
5. FOR CORNERS, C901C AND C900C, SEE PAGE 4 FOR MOUNTING DIMENSIONS AND INSTALLATION INSTRUCTIONS.

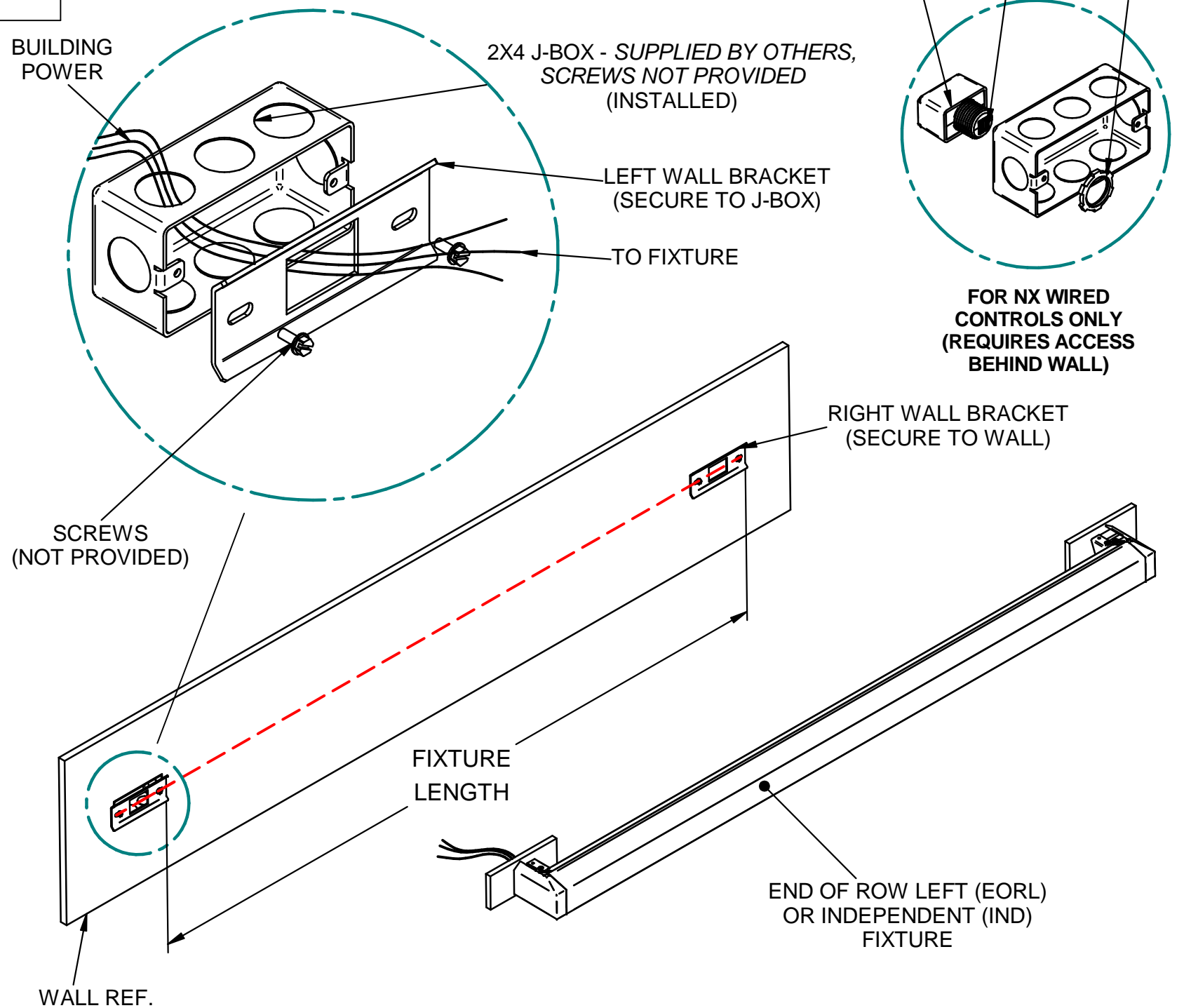
TOOLS REQUIRED

- PHILLIPS SCREWDRIVER/DRILL
- NEEDLE NOSE PLIERS
- BUBBLE LEVEL
- 5/64" HEX KEY

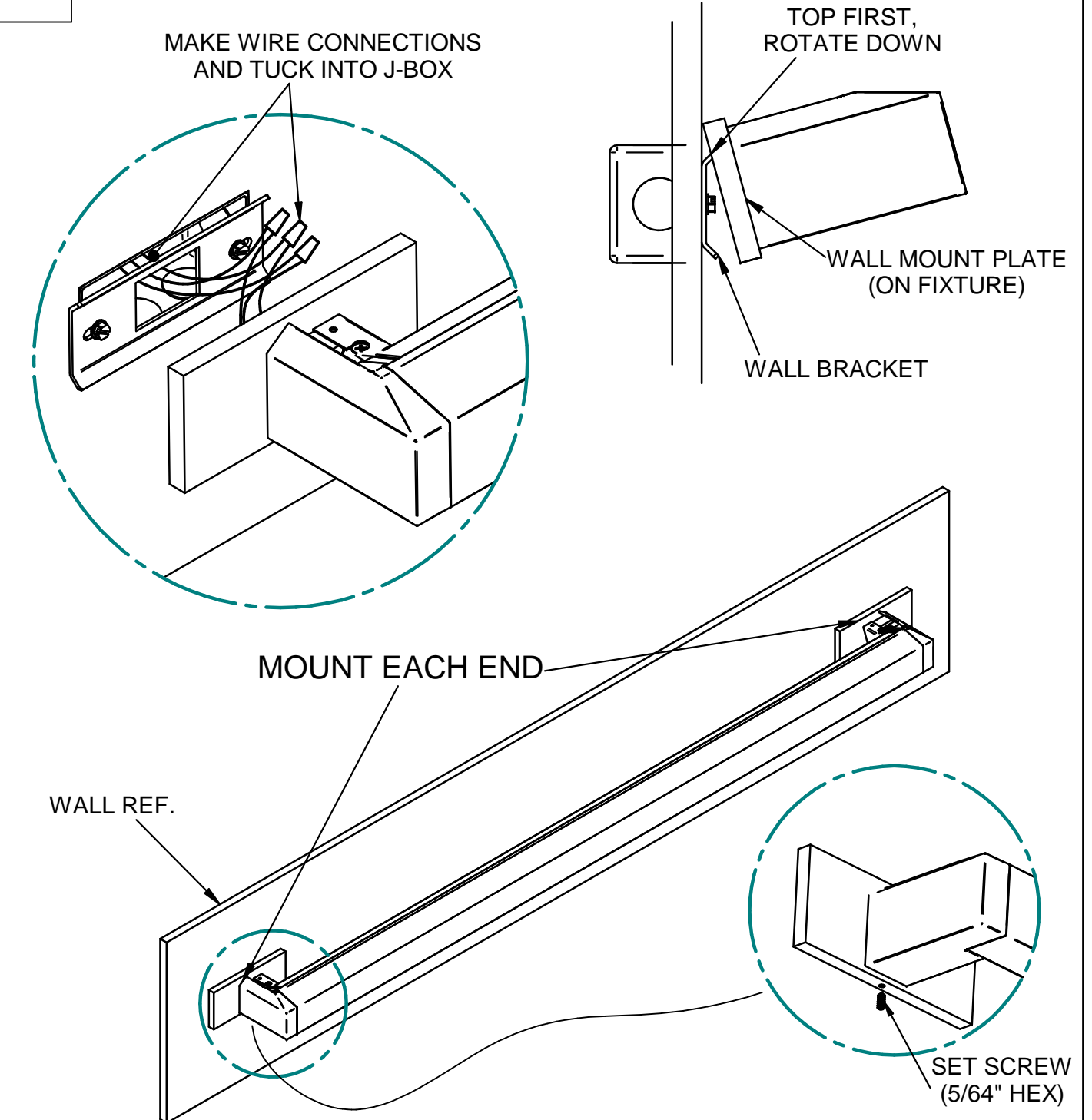
SUPPLIED BY INSTALLER

- 2x4 JUNCTION BOX
- MOUNTING SCREWS COMAPTIBLE WITH J-BOX
- SCREWS FOR MOUNTING TO WALL (WALL MATERIAL DEPENDANT)

1 WALL MOUNT FIXTURE & J-BOX INSTALL



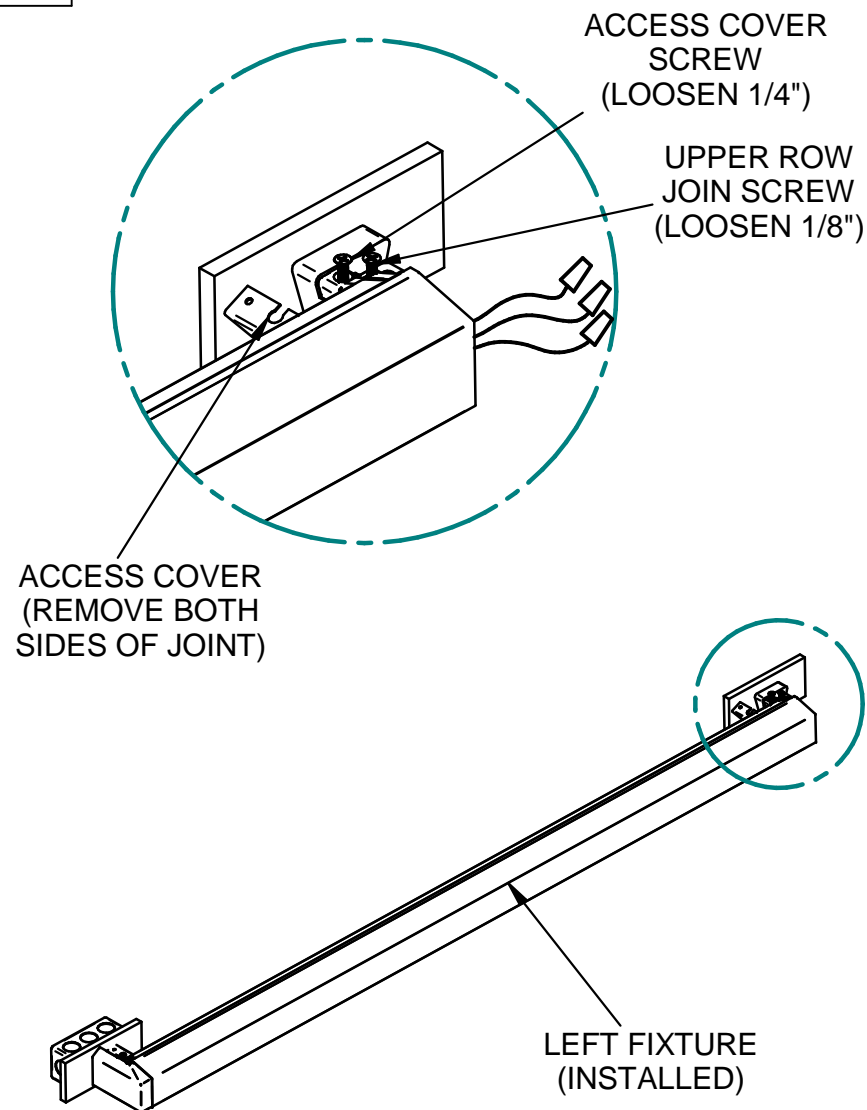
2 J-BOX WIRING & HANGING FIXTURE



INSTALL 2X4 JBOX (SUPPLIED BY OTHERS, SCREWS NOT PROVIDED) PER DIMENSIONS SHOWN ON SHEET 1. FEED WIRES FROM BUILDING POWER INTO 2X4 JBOX. WIRING QUANTITY AND COLOR MAY VARY. MOUNT WALL BRACKETS ALONG A STRAIGHT LINE. THE LEFT BRACKET WILL MOUNT TO JBOX. IF INSTALLING ROW, REFER TO TOP VIEW ON PAGE 1. IF REQUIRED, USE SHIMS (NOT SUPPLIED) BETWEEN WALL SURFACE AND BACK OF BRACKETS. DRILL WIREWAY HOLE WITHIN SQUARE CUTOUT ON EACH BRACKET. FOR WIRED NX CONTROLS, REMOVE .875" K.O FROM BACK OF J-BOX AND INSTALL NXFSP DEVICE. ENSURE CAT5 PORTS ARE ON OUTSIDE. RUN NX CABLE FROM FIXTURE THRU BRACKET AND INTO SMART PORT ON BACK OF NXFSP DEVICE.

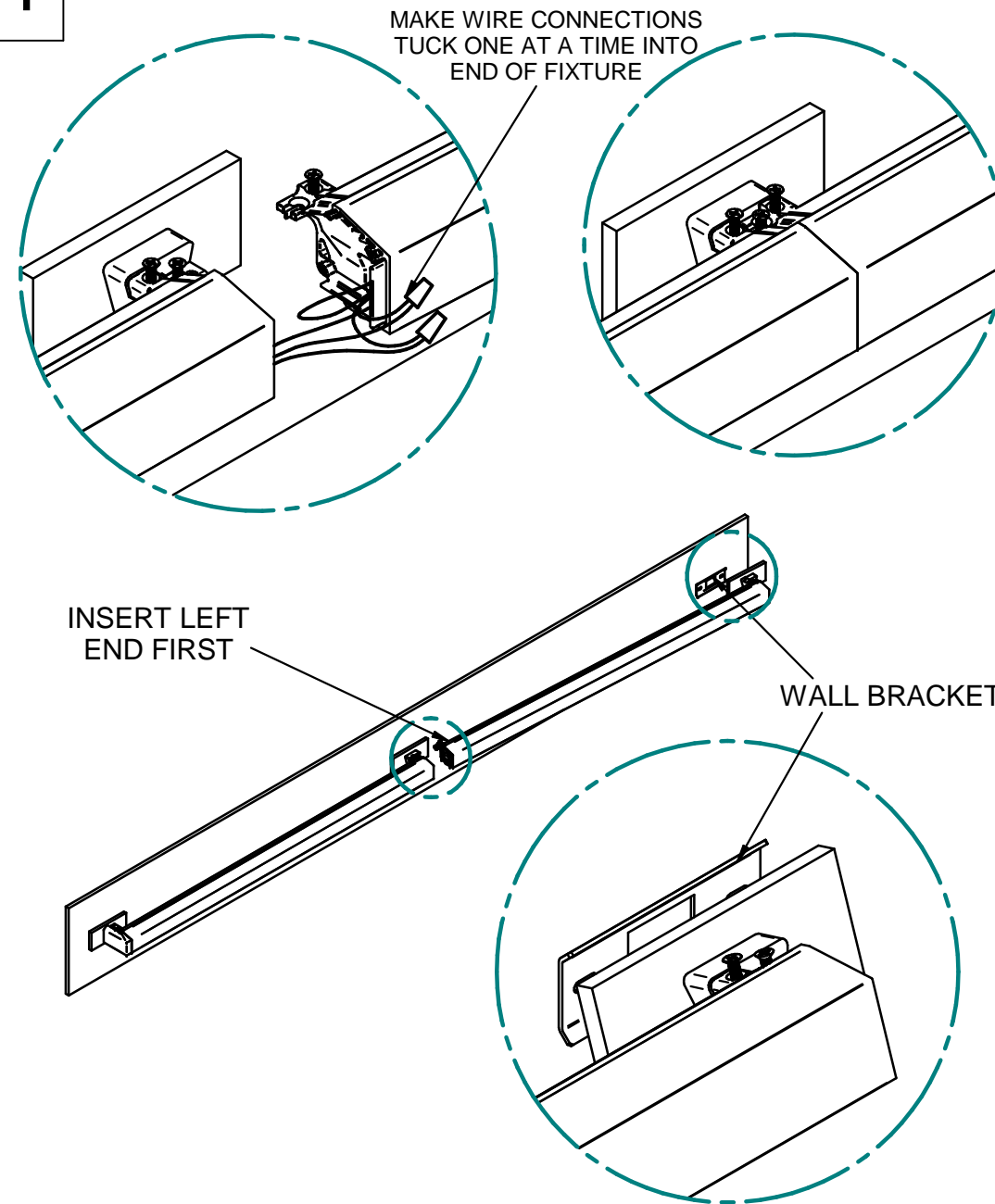
BRING FIXTURE UP TO WALL. MAKE WIRE CONNECTIONS THEN TUCK ALL CONNECTORS AND WIRES THROUGH WALL BRACKET AND INTO J-BOX. ALIGN THE WALL MOUNT PLATES WITH WALL BRACKETS AND WITH THE FIXTURE HELD AT AN ANGLE, HOOK THE UPPER, INSIDE EDGE OF THE WALL MOUNT PLATE OVER THE TOP OF THE WALL MOUNT BRACKET. ENSURE BOTH SIDES OF THE FIXTURE ARE HOOKED ONTO THE WALL BRACKETS AND ALLOW THE FIXTURE TO ROTATE DOWNWARDS UNTIL FLUSH TO WALL. INSERT AND TIGHTEN SET SCREW AT BOTTOM OF EACH WALL MOUNT PLATE.

3 ROW JOINING



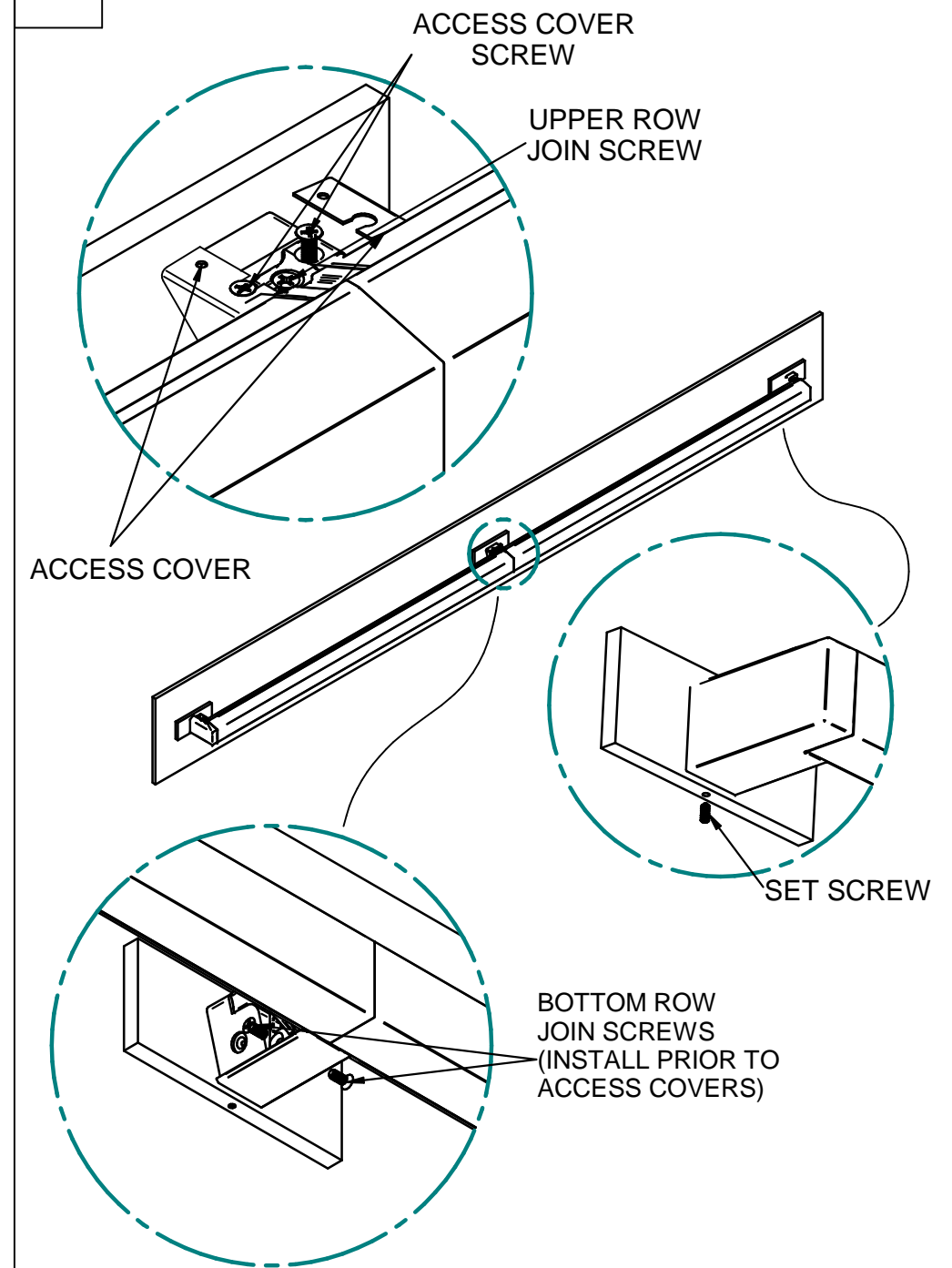
WITH FIXTURE TO LEFT IN ROW INSTALLED, LOOSEN UPPER ROW JOIN AND ACCESS COVER SCREW, BUT DONT FULLY REMOVE. ROTATE ACCESS COVER DOWN AND OUT, THEN SET ASIDE FOR NOW. REPEAT FOR EACH FIXTURE IN ROW. ENSURE THE ACCESS COVER(S) ARE KEPT WITH THEIR CORRESPONDING FIXTURES.

4 ROW JOIN WIRING



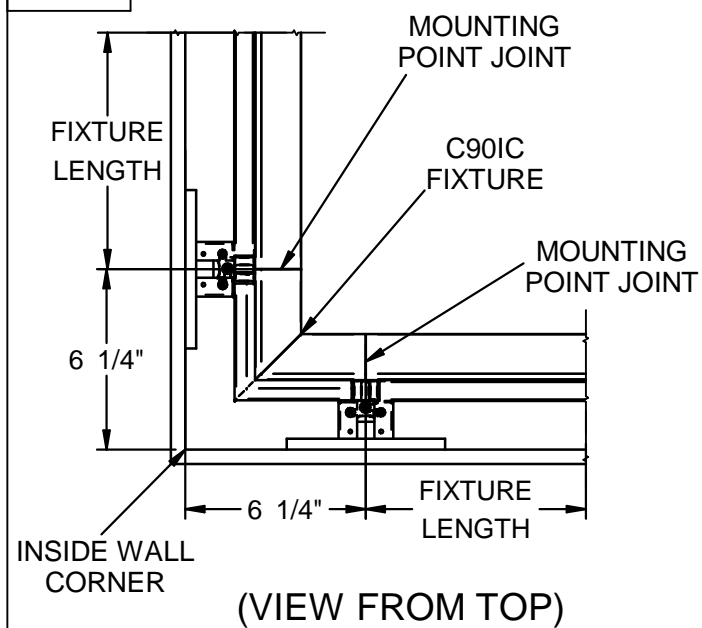
INSTALL WALL BRACKET FOR NEXT FIXTURE IN ROW AS SHOWN IN STEP 1. WITH FIXTURE TO LEFT INSTALLED, BRING NEXT FIXTURE UP. MAKE WIRE CONNECTIONS AND TUCK INTO FIXTURE. INSERT LEFT END OF FIXTURE INTO THE INSTALLED FIXTURE. ENSURE NO WIRES ARE PINCHED OR DAMAGED. WITH LEFT END LOOSELY INSERTED, HOOK OPPOSITE END ONTO WALL BRACKET. ENSURE FIXTURES ARE LEVEL WITH EACH OTHER. IF WIRING TO J-BOX NOT LOCATED AT EORL FIXTURE, SPLICE J-BOX WIRES TO INTERMEDIATE CONNECTIONS.

5 ROW JOIN FASTNERS AND ACCESS COVERS



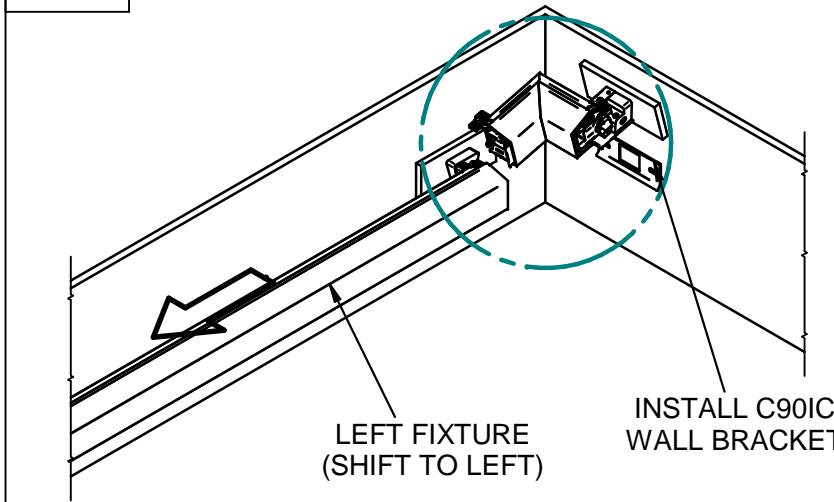
WITH FIXTURES LOOSELY INSTALLED, INSERT BOTTOM ROW JOIN SCREWS AND FULLY TIGHTEN EACH SIDE. INSTALL SET SCREW (SEE STEP 2). THEN RE-INSTALL ACCESS COVERS (SEE STEP 3) AND FULLY TIGHTEN UPPER ROW JOIN AND ACCESS COVER SCREWS. **FOR CORNERS, C901C OR C900C, PARTIALLY TIGHTEN SET SCREW TO ALLOW FIXTURE TO SLIDE BACK AND FORTH AND PROCEED TO PAGE 4. INSTALL NEXT FIXTURE(S) IN ROW BY REPEATING STEPS 1-5.**

6A INSIDE CORNER, C90IC



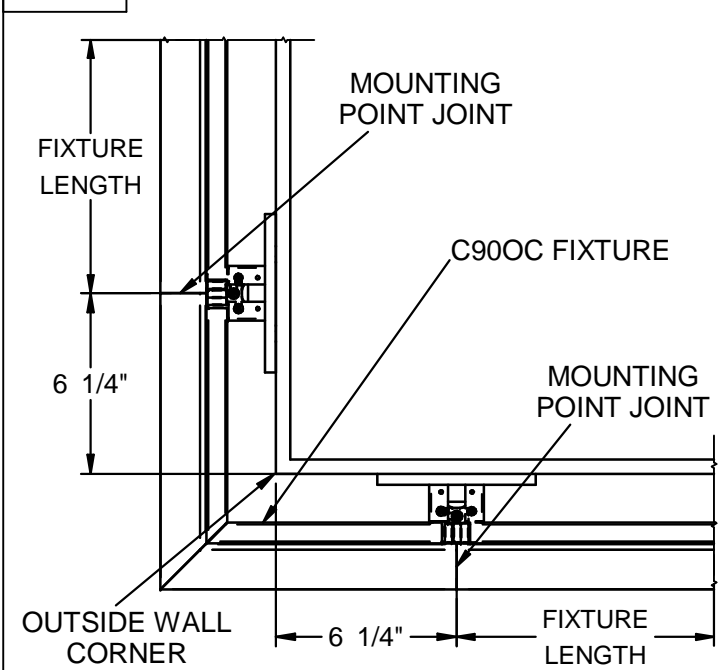
SEE ABOVE FOR INSIDE CORNER, C90IC MOUNTING DIMENSIONS PRIOR TO INSTALL

7A C90IC WALL BRACKET AND WIRING



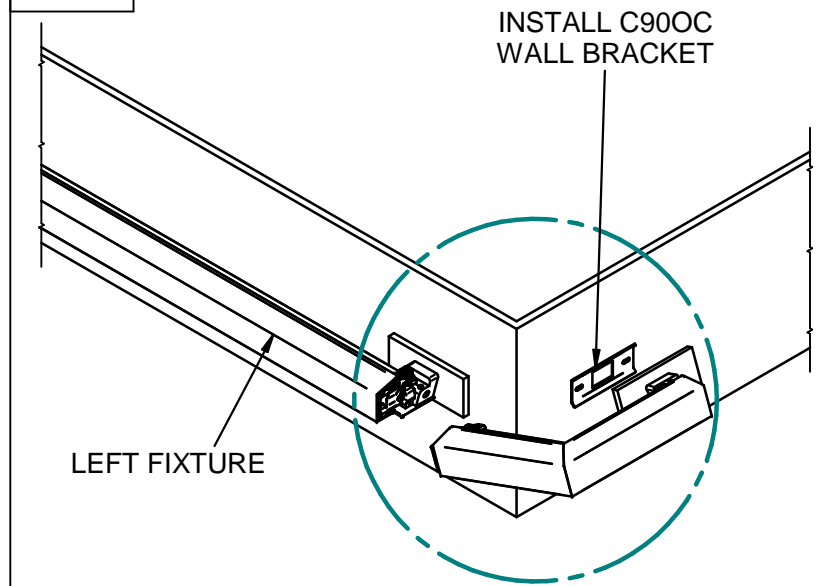
ENSURE SET SCREWS ARE LOOSELY INSTALLED (STEP 5) THEN SLIDE LEFT FIXTURE AWAY FROM WALL CORNER. INSTALL C90IC WALL BRACKET (SEE STEP 1), USING SCREWS (SUPPLIED BY OTHERS) THEN REMOVE ACCESS COVERS FROM FIXTURE(S) (SEE STEP 3).

6B OUTSIDE CORNER, C90OC



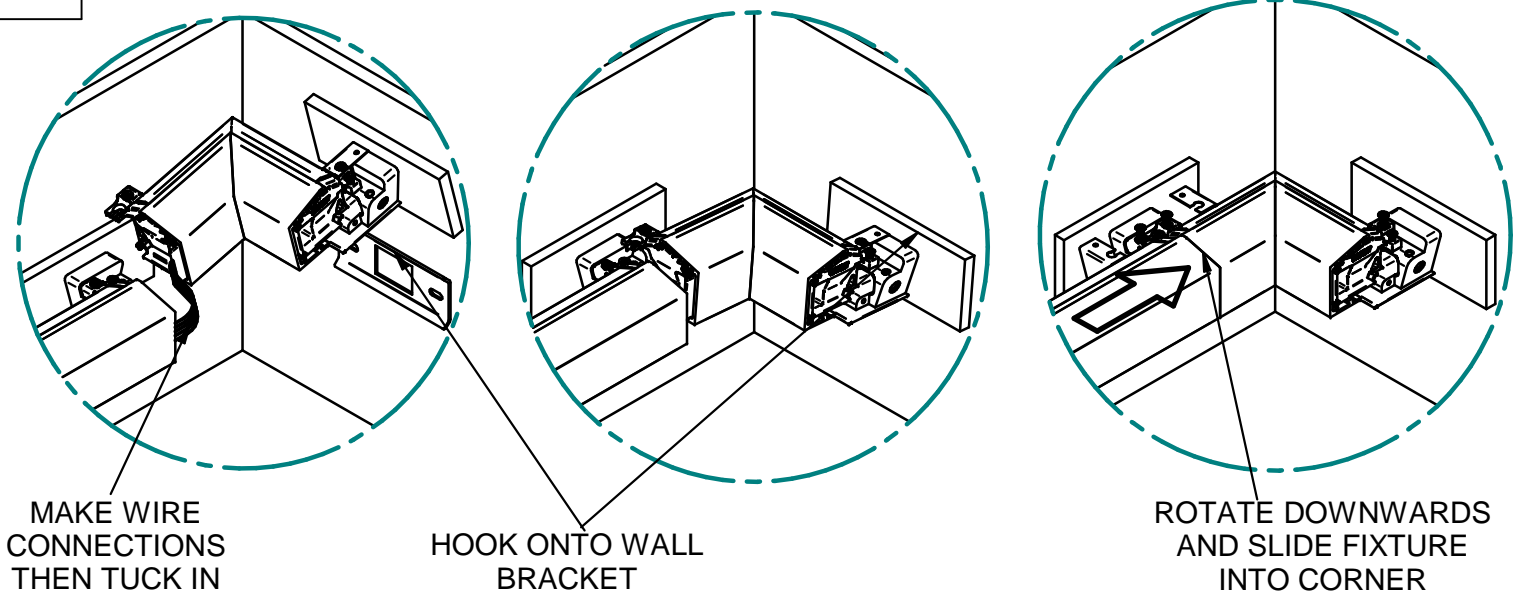
SEE ABOVE FOR INSIDE CORNER, C90IC MOUNTING DIMENSIONS PRIOR TO INSTALL

7B C90OC WALL BRACKET AND WIRING



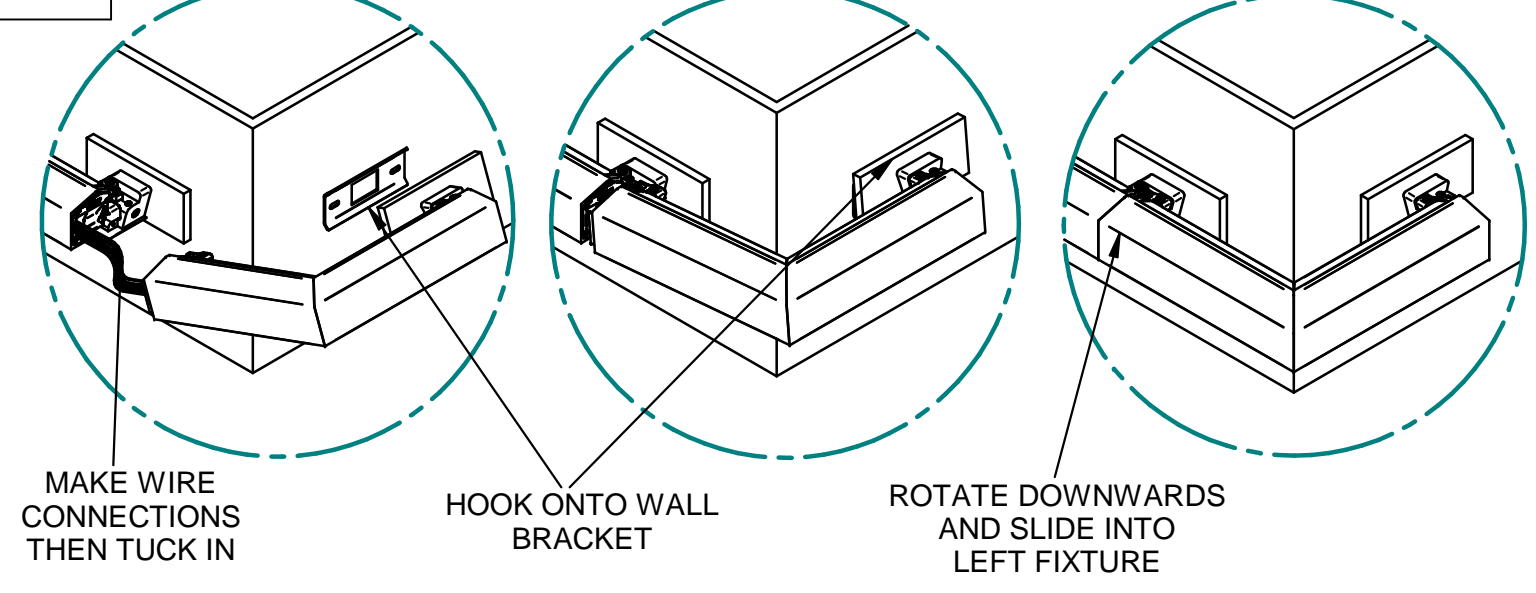
ENSURE SET SCREWS ARE LOOSELY INSTALLED (STEP 5) INSTALL C90OC WALL BRACKET (SEE STEP 1), USING SCREWS (SUPPLIED BY OTHERS) THEN REMOVE ACCESS COVERS FROM FIXTURE(S) (SEE STEP 3).

8A C90IC INSTALL



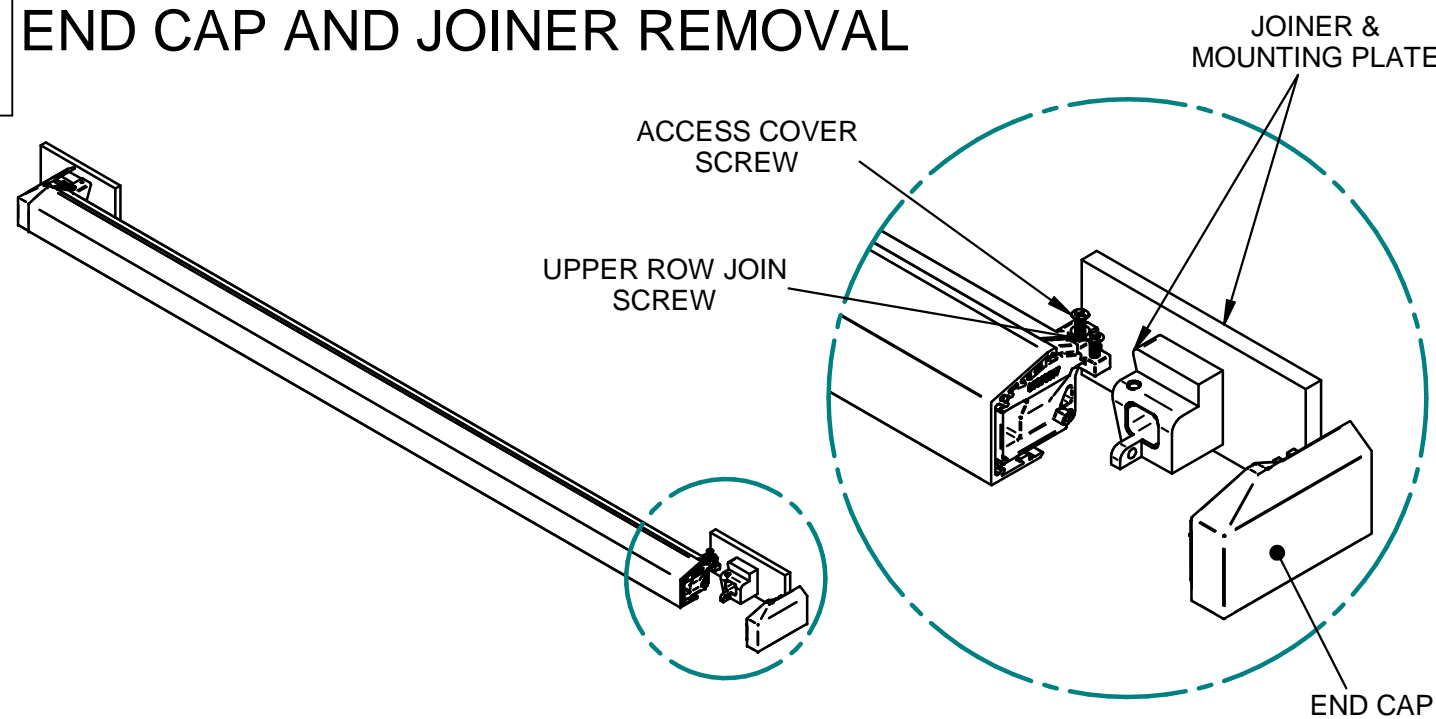
MAKE WIRE CONNECTIONS THEN TUCK INTO FIXTURE AND SHIFT C90IC FIXTURE INTO PLACE. HOOK TOP OF MOUNTING PLATE ONTO WALL BRACKET (SEE STEP 2 & 4) AND ROTATE C90IC FIXTURE INTO PLACE. SLIDE LEFT FIXTURE BACK INTO WALL CORNER, ENSURING NO WIRES ARE PINCHED OR DAMAGED, THEN FULLY FASTEN FIXTURES TOGETHER (SEE STEP 5). LASTLY, FULLY TIGHTEN SET SCREWS ON BOTH LEFT FIXTURE AND THE C90IC CORNER. INSTALL NEXT FIXTURE(S) IN ROW BY REPEATING STEPS 1-5

8B C90OC INSTALL



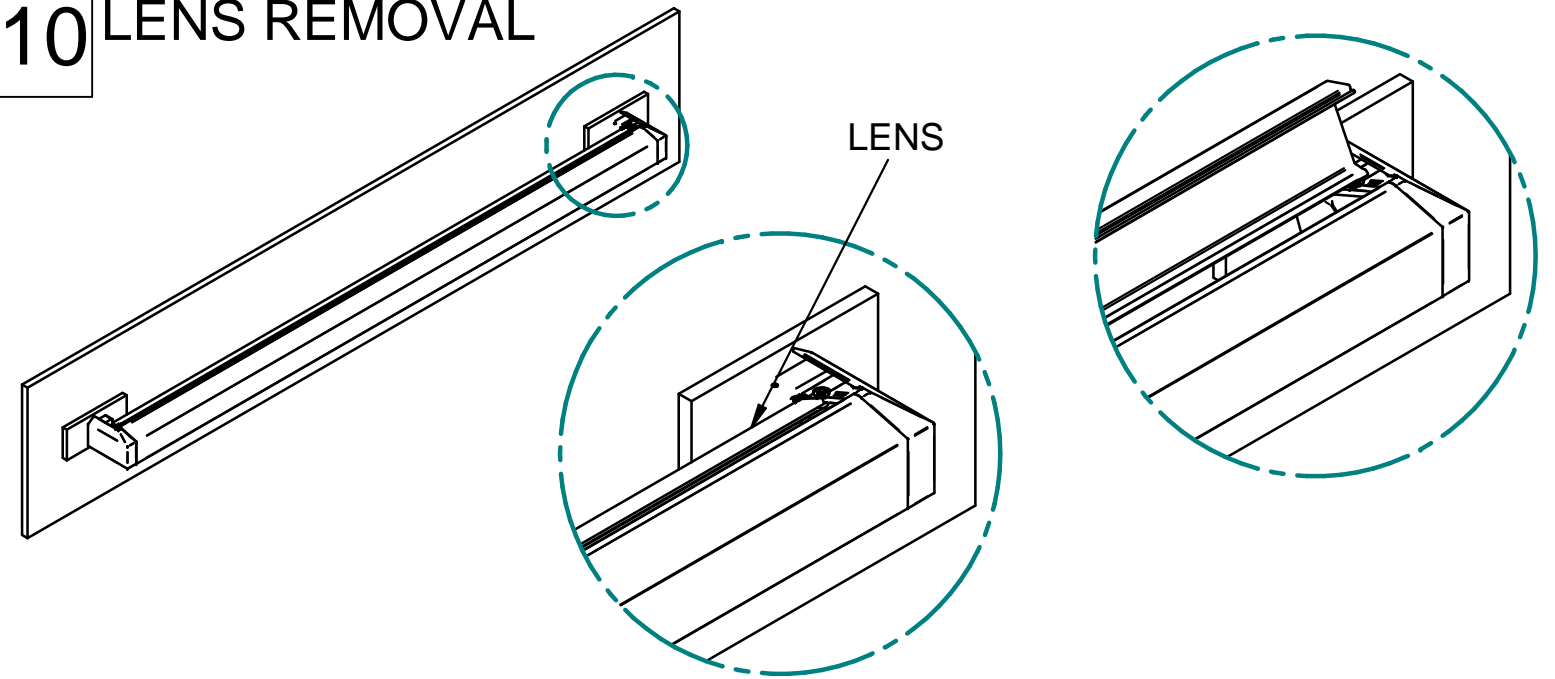
MAKE WIRE CONNECTIONS THEN TUCK INTO FIXTURE AND SHIFT C90OC FIXTURE INTO PLACE. HOOK TOP OF MOUNTING PLATE ONTO WALL BRACKET (SEE STEP 2 & 4) AND ROTATE C90OC FIXTURE INTO PLACE. BRING FIXTURES TIGHTLY TOGETHER, ENSURING NO WIRES ARE PINCHED OR DAMAGED, THEN FULLY FASTEN FIXTURES TOGETHER (SEE STEP 5). LASTLY, FULLY TIGHTEN SET SCREWS ON BOTH LEFT FIXTURE AND THE C90OC CORNER. INSTALL NEXT FIXTURE(S) IN ROW BY REPEATING STEPS 1-5

9 END CAP AND JOINER REMOVAL



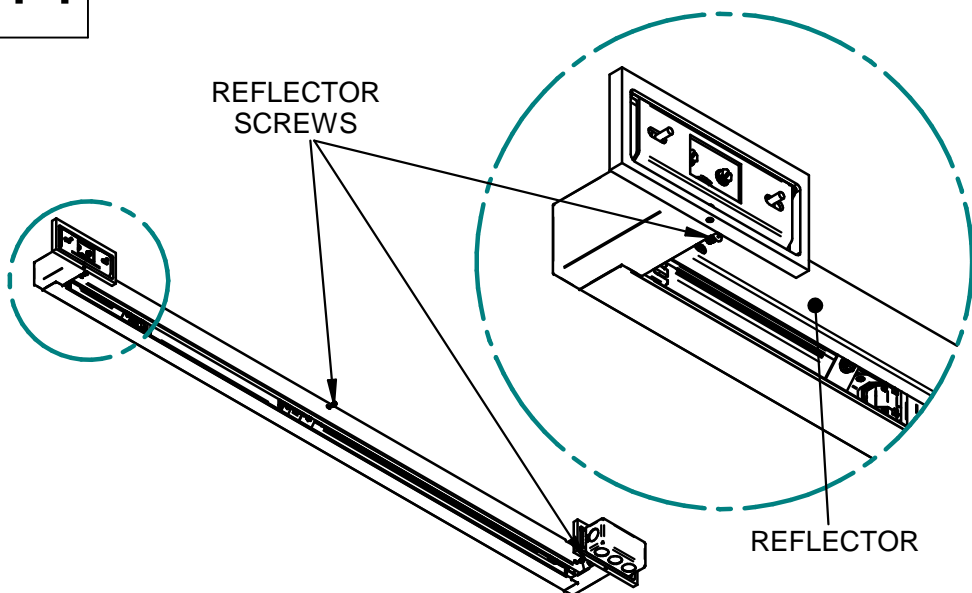
****FIXTURE MUST NOT BE INSTALLED TO PERFORM THIS STEP.** REMOVE ACCESS COVERS (SEE STEP 3) AND LOOSEN UPPER ROW JOIN SCREW. REMOVE LOWER ROW JOIN SCREW(S). END CAP AND JOINER/MOUNTING PLATE WILL BE LOOSE AT THIS POINT. TO REPLACE OR SWAP ENDS, REPEAT STEPS IN REVERSE ORDER.

10 LENS REMOVAL



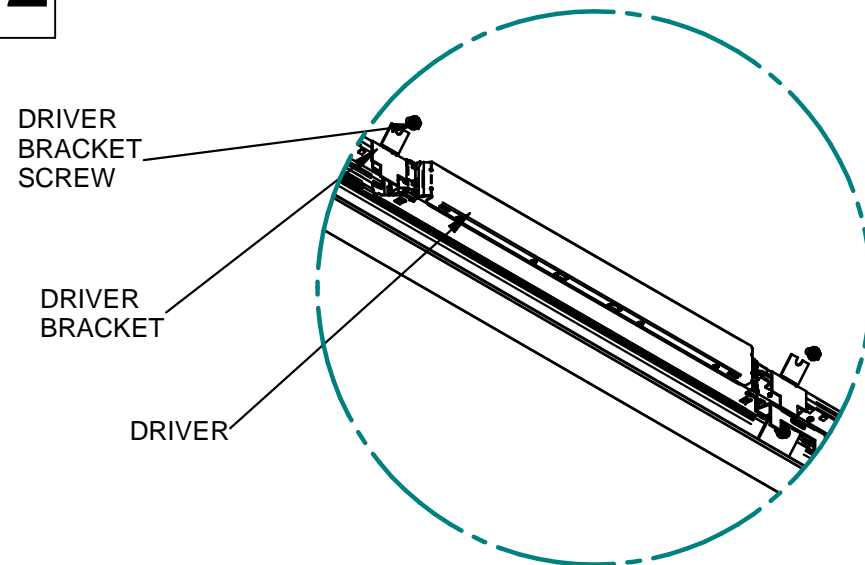
SEE STEP 3 FOR REMOVING THE ACCESS COVERS, **COVERS MUST BE REMOVED PRIOR TO LENS REMOVAL.** FOR EACH LENS, PRESS ON THE TOP AND INWARDS TOWARDS THE WALL ALONG ENTIRE LENGTH. ONCE THE TOP PORTION IS PRESSED OUT, LENS CAN BE REMOVED VERTICALLY. TO REINSTALL, INSERT LENS BACK INTO FIXTURE, BOTTOM FIRST, THEN PRESS THE TOP OF THE LENS INTO THE HOUSING ALONG ENTIRE LENGTH. ENSURE THE LENS IS FULLY SNAPPED IN ON TOP AND BOTTOM.

11 REFLECTOR REMOVAL



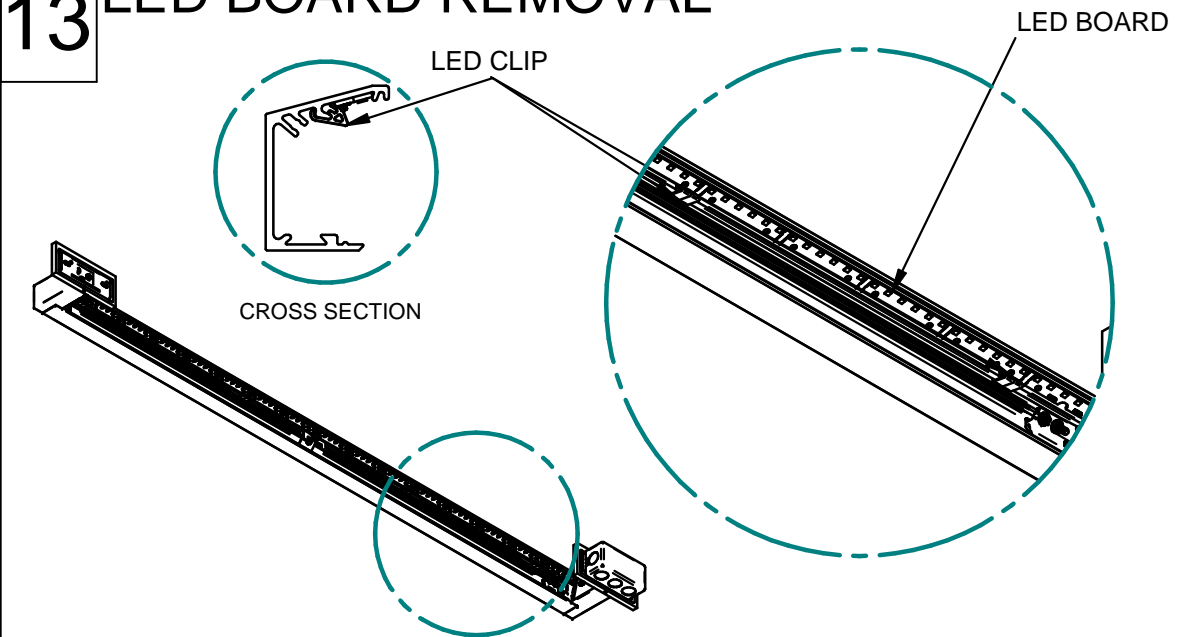
SEE STEP 10 (LENS REMOVAL). ****WALL HIDDEN IN VIEWS ABOVE****. USE 1/4" RATCHET WITH ADAPTER AND PHILLIPS HEAD BIT TO REMOVE ALL REFLECTOR SCREWS. SHIFT REFLECTOR TOWARDS CENTER OF FIXTURE THEN UP AND OUT. USE UPPER HOLES AT END OF FIXTURE TO HELP REMOVE IF NEEDED. TO REINSTALL, REPEAT IN REVERSE ORDER ENSURING NO WIRES OR CORDS ARE DAMAGED DURING INSTALL.

12 DRIVER REMOVAL



SEE STEP 10 (LENS REMOVAL) AND STEP 11 (REFLECTOR REMOVAL). LOCATE DRIVER. REMOVE DRIVER BRACKET SCREWS WITH 1/4" RATCHET AND 1/4" DEEP-SOCKET. SLIDE THE DRIVER OUT OF HOUSING AND REMOVE WIRES TO INSTALL DRIVER, ENSURE ALL WIRES ARE TUCKED INTO BOTTOM OF HOUSING AND INSERT DRIVER FLUSH TO HOUSING. RE-ATTACH DRIVER BRACKETS AND INSERT WIRES BACK INTO DRIVER.

13 LED BOARD REMOVAL



SEE STEP 10 (LENS REMOVAL) AND STEP 11 (REFLECTOR REMOVAL). WITH REFLECTOR REMOVED, LOCATE THE PLASTIC LED CLIPS HOLDING THE LED BOARD IN PLACE. PRESS AND ROTATE UPWARDS, TOWARDS THE CENTER OF THE FIXTURE. REPEAT FOR EACH LED CLIP AND REMOVE BOARD. TO RE-INSTALL, HOLD BOARD IN HOUSING AND PRESS IN LED CLIPS ALONG LENGTH ENSURING THE BOARD IS FLAT AND FULLY INSERTED INTO HOUSING.