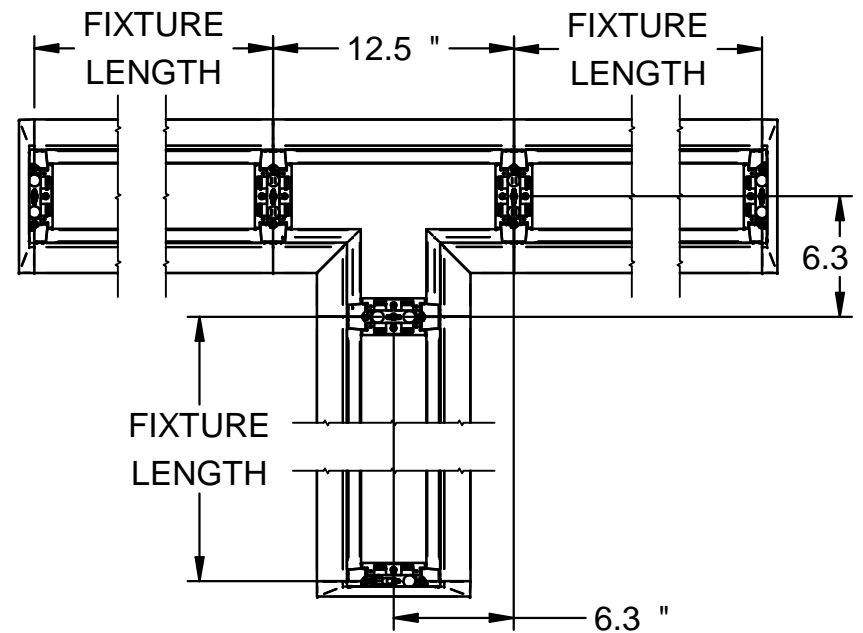
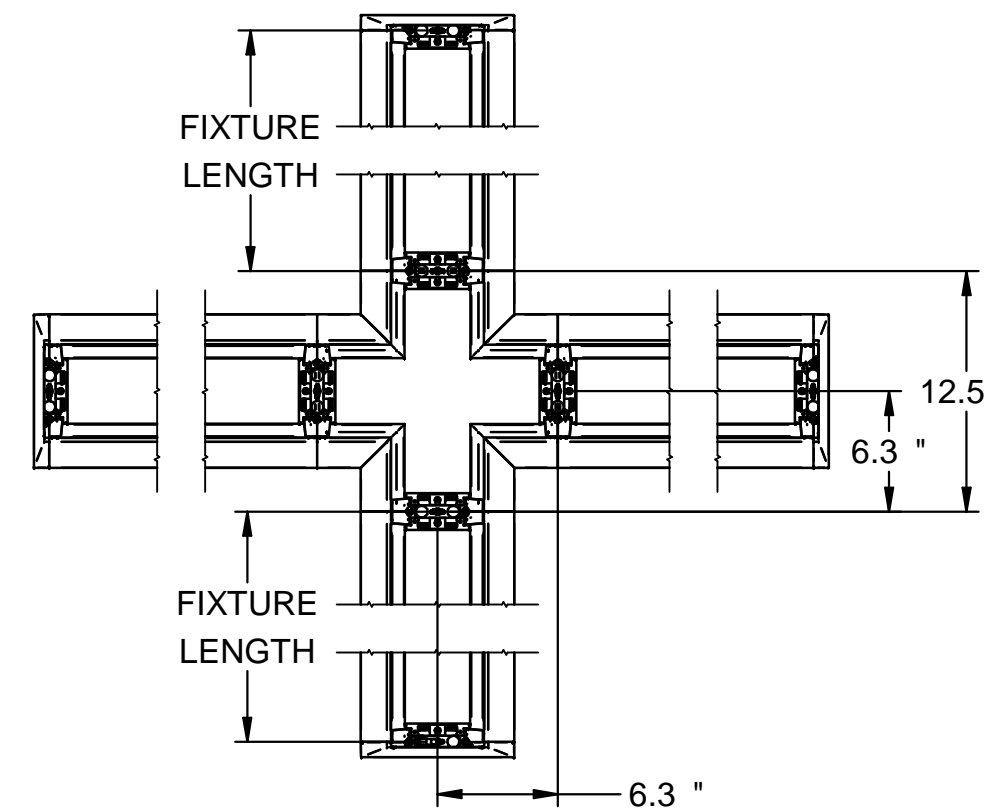


"C90L" TOP VIEW

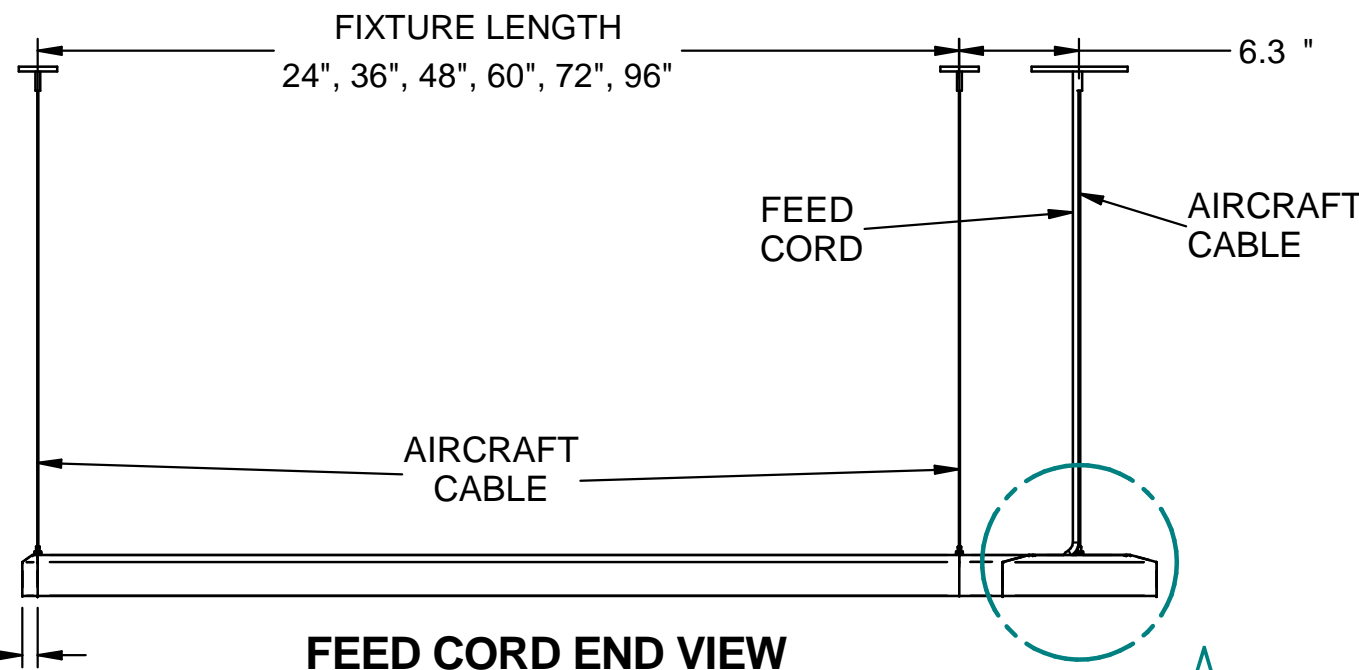


"C90T" TOP VIEW

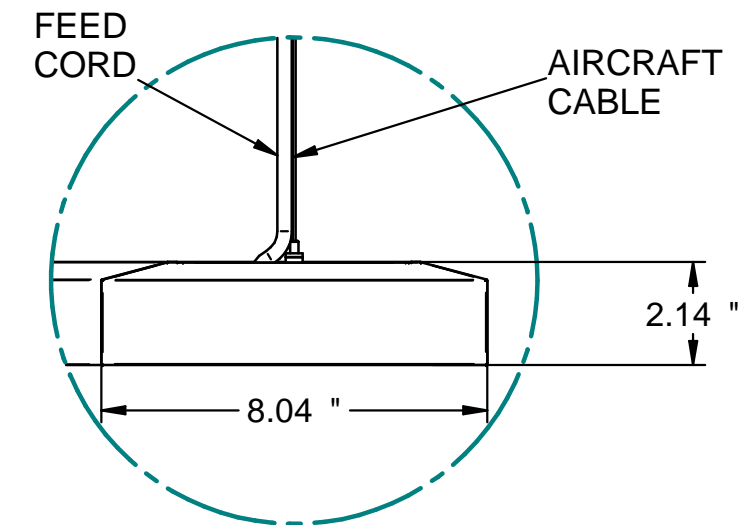


"C90X" TOP VIEW

Weight and Suspension		
Pattern	Weight	Suspension Points
C90L	3.5	2
C90T	4	3
C90X	4	4



FEED CORD END VIEW ("L" EXAMPLE)



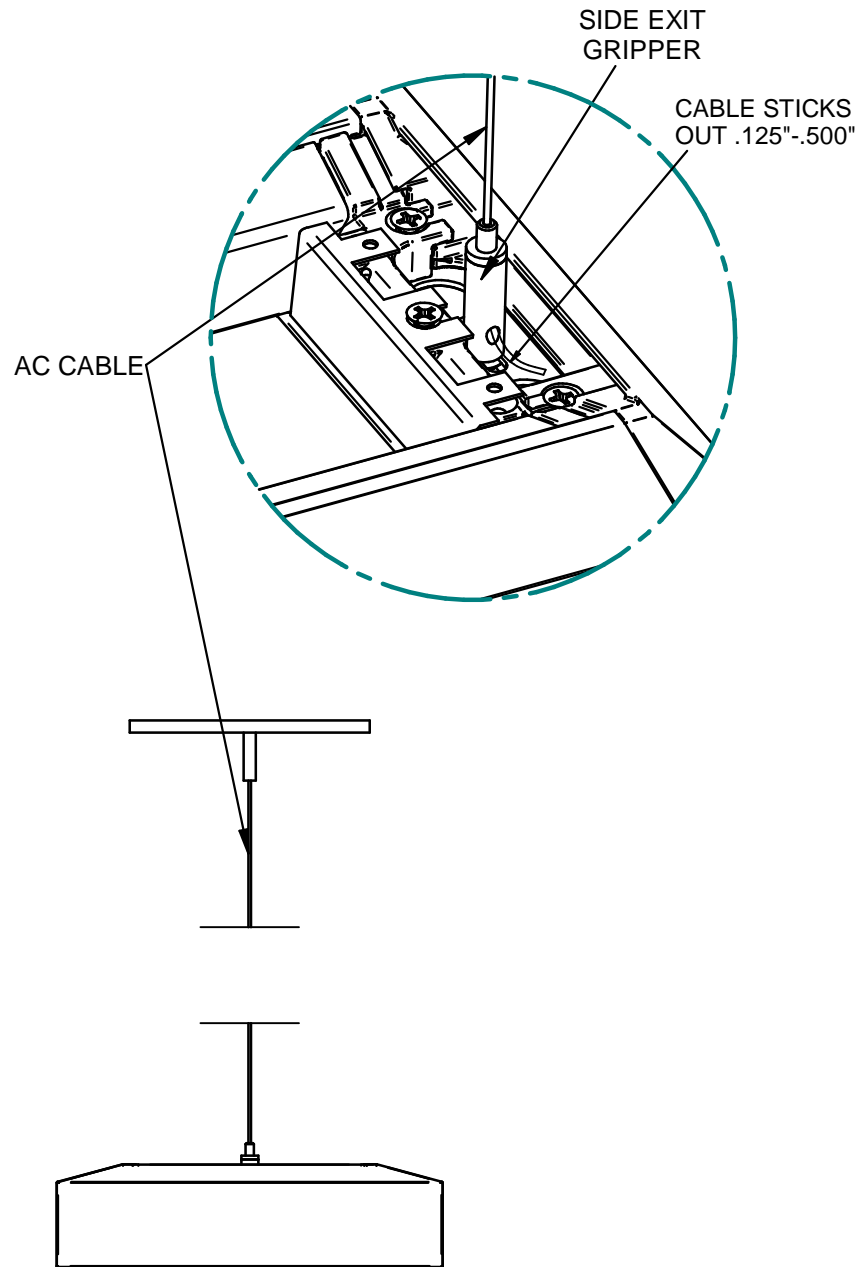
DETAIL A

GENERAL NOTES: (READ SHEETS COMPLETELY BEFORE STARTING)

1. LEAVE PROTECTIVE WRAPPING MATERIAL ON FIXTURE(S) UNTIL START OF INSTALLATION TO PROTECT FINISH FROM DAMAGE.
2. REFER TO SUPPLEMENTAL WIRING INSTRUCTION SHEET 510401 WHEN MAKING WIRING CONNECTIONS.
3. FOR CANOPIES, REFER TO SUPPLEMENTAL AIRCRAFT CABLE SUSPENSION (FA) INSTRUCTION SHEET 510541-08 OR STEM SUSPENSION (P) INSTRUCTION SHEET 99009870.
3. APPROXIMATE WEIGHT OF FIXTURE IS 3.50 LBS PER FOOT OF LENGTH.
4. FEED CORDS ARE FACTORY INSTALLED ON INDIVIDUAL FIXTURES. FOR ROW MOUNTED FIXTURES, FEED CORD IS FACTORY INSTALLED AT END OF ROW LEFT (EORL) FIXTURE ONLY. IF ADDITIONAL FEED CORDS ARE REQUIRED FOR THE ROW, THEY WILL BE SUPPLIED BY LITECONTROL, BUT FIELD INSTALLED BY CONTRACTOR. TYPICALLY FOUND IN EORL PACKAGING. FOR CLOSED PATTERNS, FEED CORD NOT INSTALLED.
5. ABOVE MEASUREMENTS APPLY TO ANY MOUNTING METHOD (AIRCRAFT CABLE SUSPENSION SHOWN).

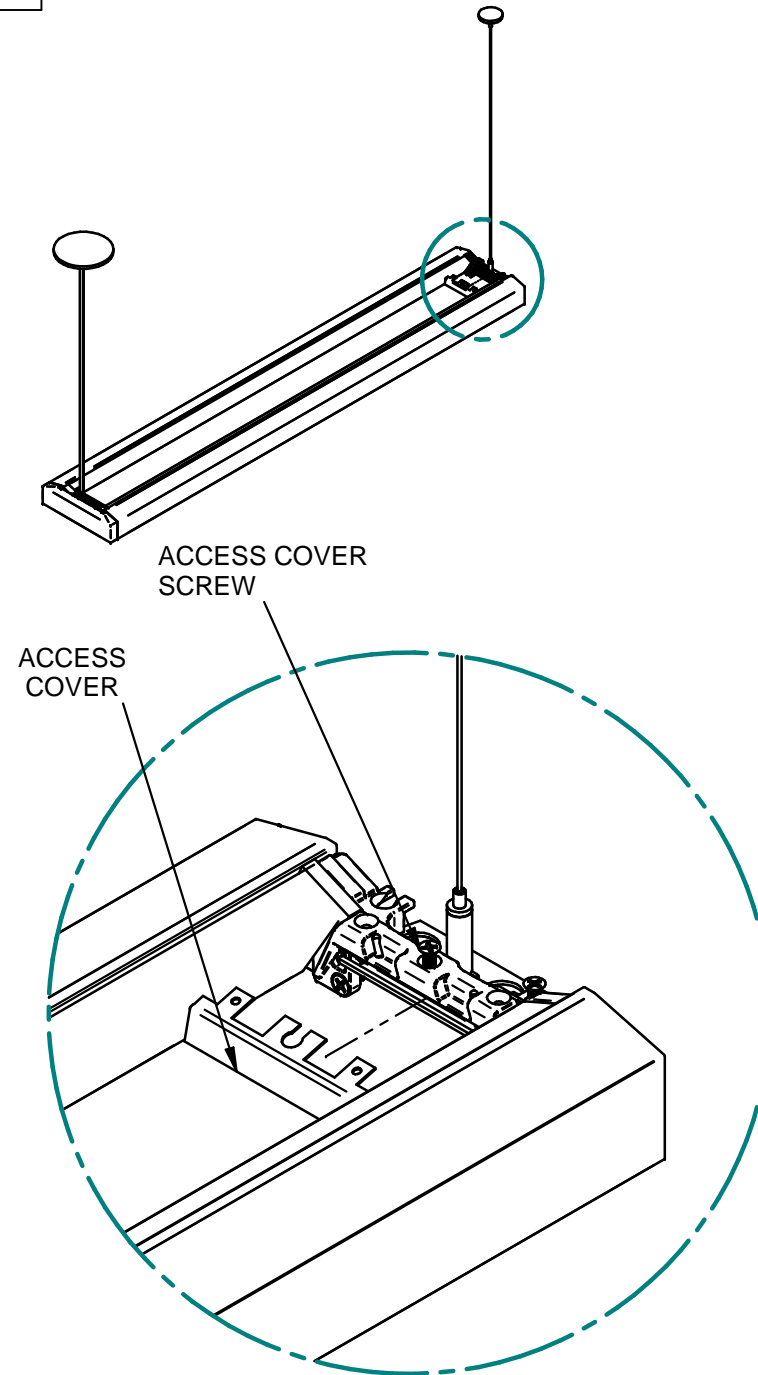
TOOLS REQUIRED	SUPPLIED BY INSTALLER
-PHILLIPS SCREWDRIVER/DRILL -NEEDLE NOSE PLIERS -BUBBLE LEVEL	

1A AIRCRAFT CABLE (FA) FIXTURE SUSPENSION



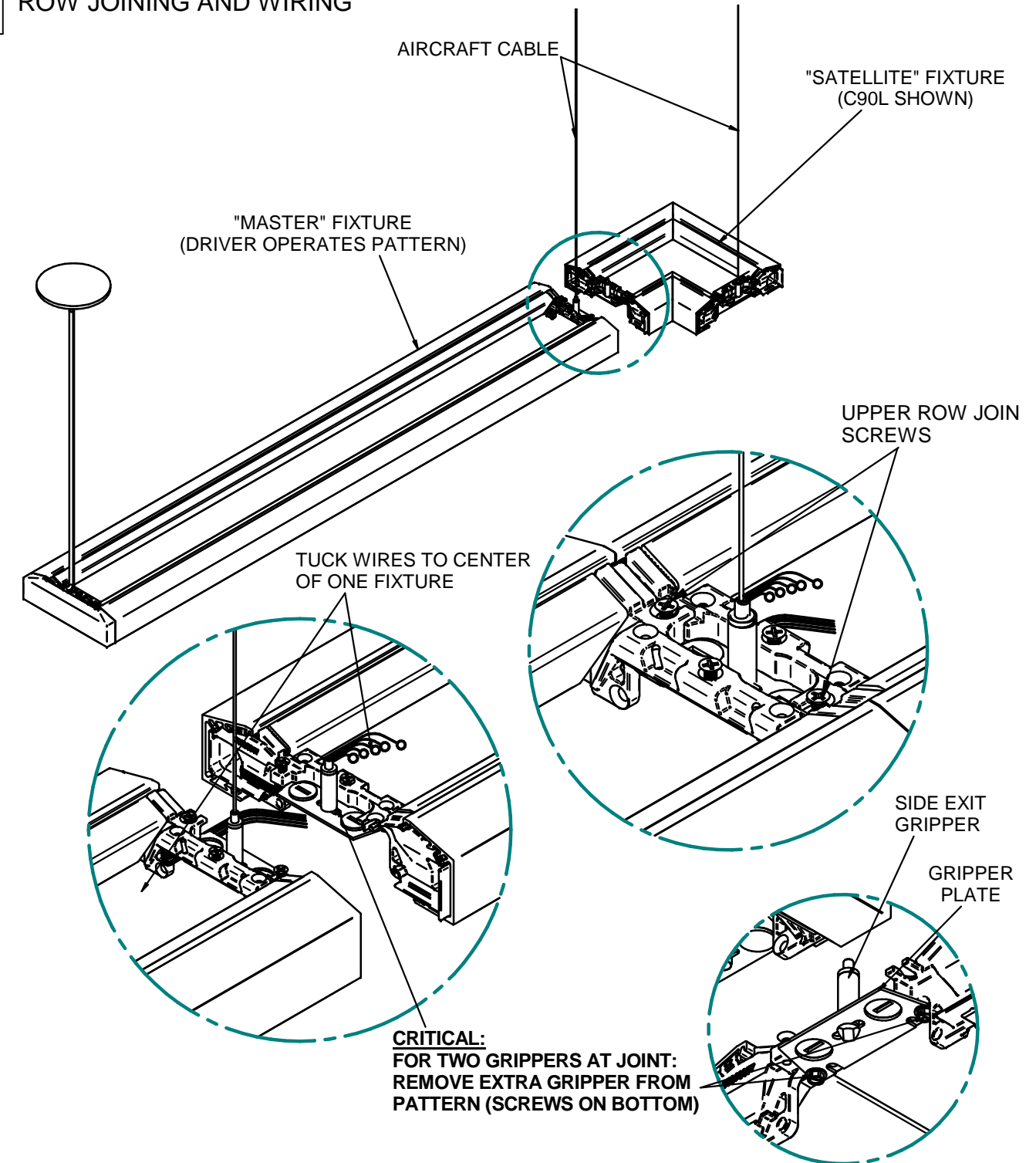
TRIM AIRCRAFT CABLE TO DESIRED LENGTH/HEIGHT FOR FIXTURE MOUNTING. LIFT FIXTURE UP TO THE AIRCRAFT CABLES AND PASS THE CABLES THROUGH THE GRIPPERS. USE NEEDLE NOSE PLIERS TO HELP ROUTE EXCESS AIRCRAFT CABLE THROUGH THE GRIPPER IF NEEDED. LEVEL FIXTURE BY ADJUSTING GRIPPER SIDE TO SIDE AND THE HEIGHT AT EACH END. REFER TO CABLE INSTRUCTION SHEET 510541. FOR ROW MOUNTED FIXTURES, PERFORM THIS STEP AND PROCEED TO STEP 2A. FOR STEM MOUNTED FIXTURES, SEE STEPS 1B, 2B, & 3B ON SHEET 3.

2A ACCESS COVER REMOVAL



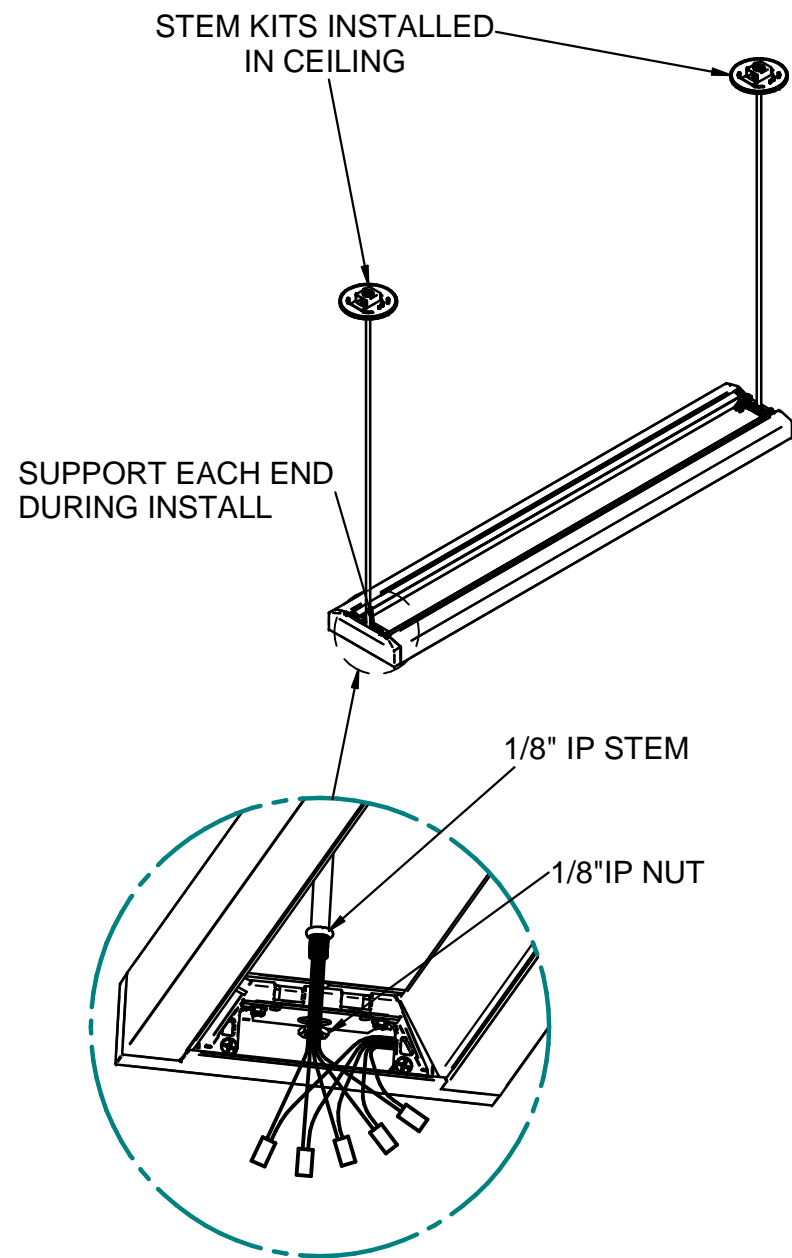
REMOVE ACCESS COVER TO REVIEW FIXTURE AND MANUFACTURER INFORMATION. TO REMOVE, LOOSEN SCREW, AND PIVOT THE ACCESS COVER DOWN, THEN OUTWARDS, AND SET ASIDE. ENSURE THE ACCESS COVER IS KEPT WITH THE CORRESPONDING FIXTURE AFTER INSTALLTION. DO NOT FULLY REMOVE SCREW. REPEAT FOR EACH FIXTURE TO BE JOINED IN A ROW. FOR REPLACEMENT ACCESS COVERS, REMOVE LABELS FROM ORIGINAL COVER AND INSTALL ON NEW COVER.

3A ROW JOINING AND WIRING



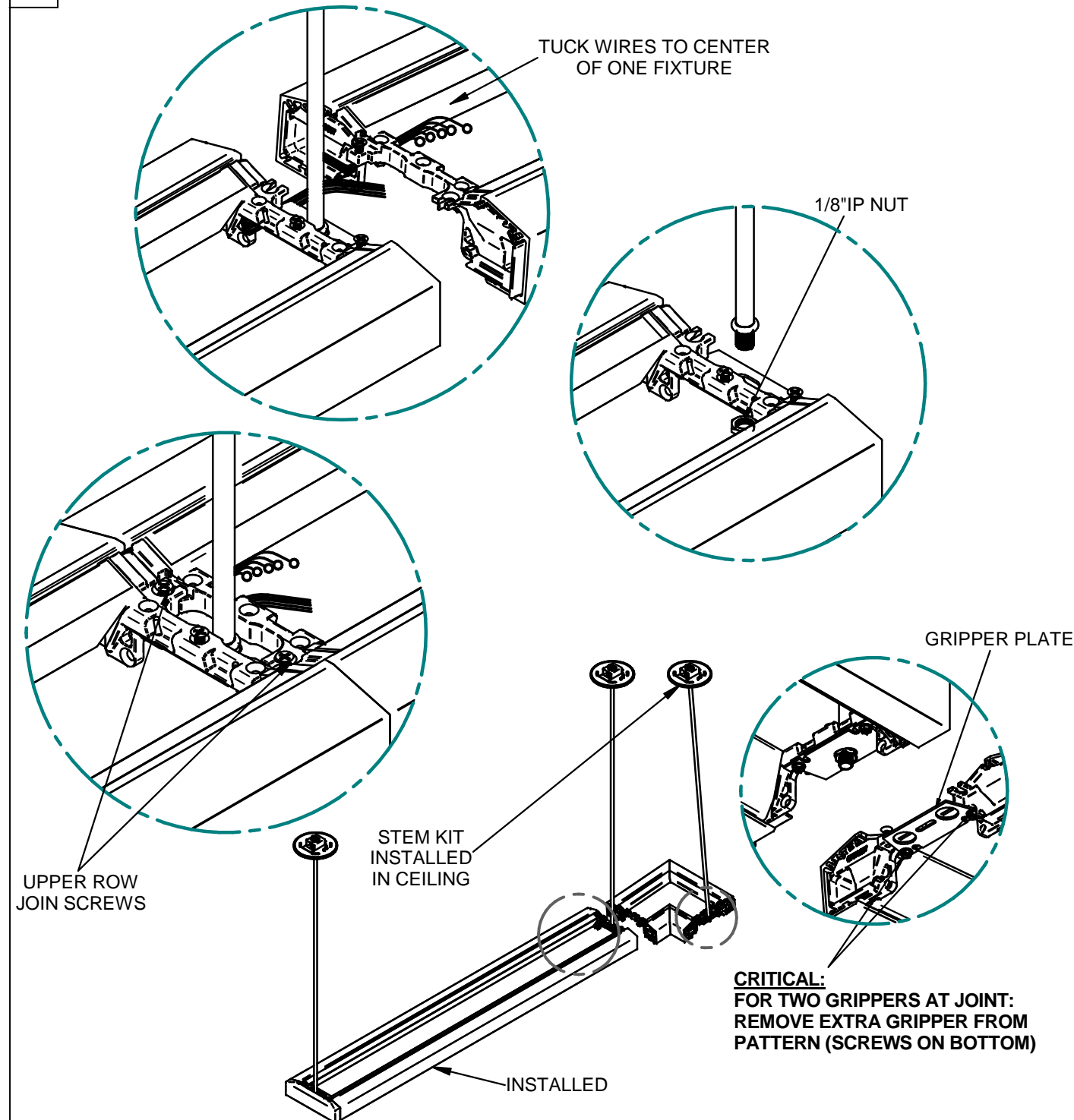
CHECK FIXTURE LABELS TO ENSURE THE CORRECT PARENT (STRAIGHT) AND CHILD (PATTERN) FIXTURES ARE JOINED TOGETHER. WITH STRAIGHT FIXTURE TO LEFT INSTALLED, ROUTE WIRES THROUGH END HEADER HOLE OR SECURE TO SIDE WITH A ZIP TIE. WITH WIRES OUT OF WAY, BRING NEXT PATTERN FIXTURE UP AND ATTACH AIRCRAFT CABLE (SEE STEP 1). **IF BOTH ENDS OF JOINING FIXTURES HAVE CABLE GRIPPERS, REMOVE PLATE AND GRIPPER FROM PATTERN.** ENSURE FIXTURES ARE LEVEL WITH EACH OTHER TO AVOID CROOKED ALIGNMENT. TUCK WIRES AND CONNECTORS TO SIDE OF ONE FIXTURE FOR NOW. ALIGN FIXTURES AND BRING TOGETHER. ONCE TOGETHER, TIGHTEN UPPER ROW MOUNT SCREWS FULLY. ENSURE NO WIRES ARE PINCHED OR DAMAGED. CONTINUE TO STEP 4 FOR FINAL ROW JOIN STEPS.

1B STEM MOUNT (P) FIXTURE SUSPENSION



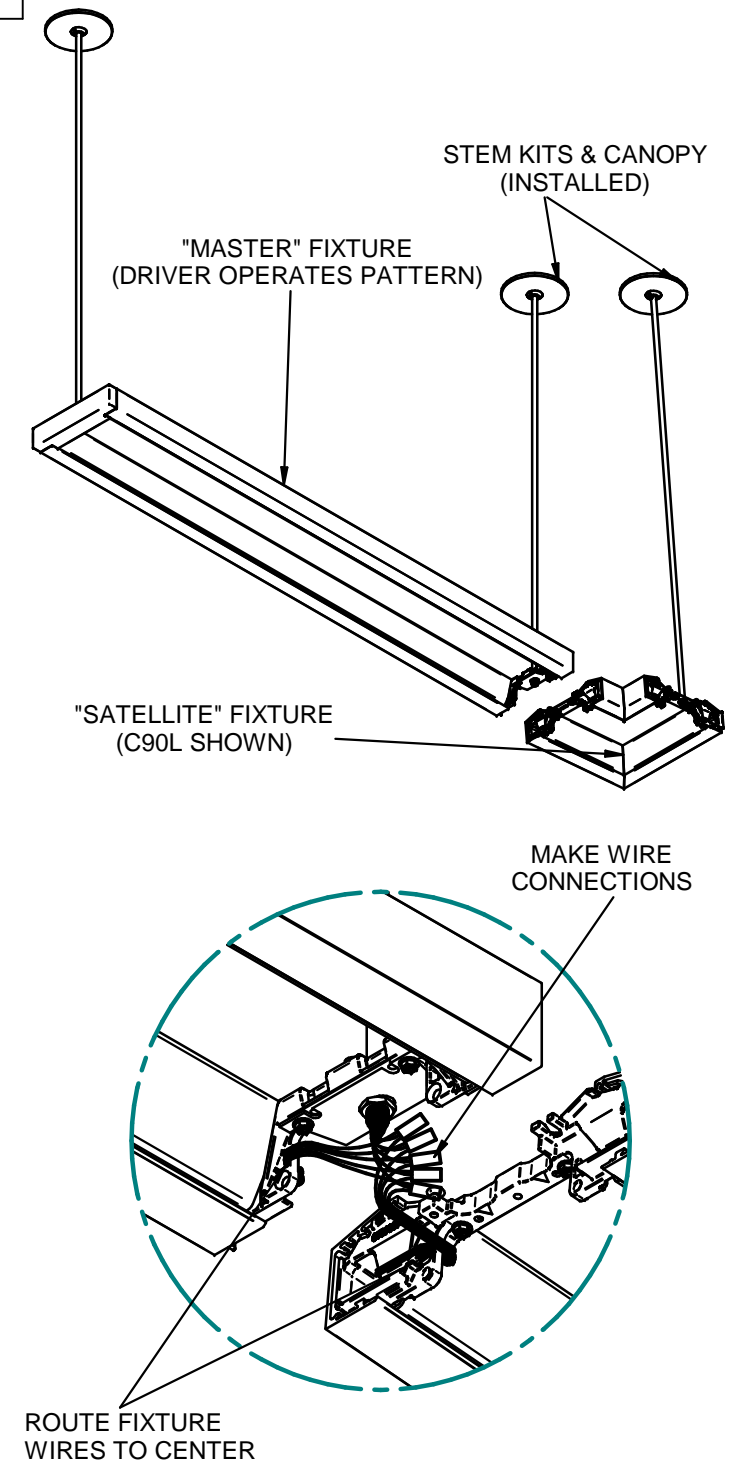
MOUNT STEM KIT TO CEILING (SEE INSTRUCTION 99009870). SEE STEP 2A FOR ACCESS COVER REMOVAL. **TWO PEOPLE REQUIRED** TO MOUNT FIXTURE. FOR END WITH WIRES, **ROUTE UP TO 5 WIRES**, THROUGH MOUNTING PLATE AND 1/8" IP NUT PRIOR TO FULLY TIGHTENING NUT TO 1/8" IP STEM. MAKE CONNECTIONS TO WIRES FROM FIXTURE. TUCK IN WIRES AND CONNECTIONS THEN RE-INSTALL ACCESS COVERS. FOR MORE THAN 5 WIRES, USE OPPOSITE END OF FIXTURE FOR ADDITIONAL WIRES. FOR END WITHOUT WIRES, SIMPLY SECURE FIXTURE TO STEM WITH 1/8" IP NUT. FOR ROW MOUNTED FIXTURES, PERFORM THIS STEP AND PROCEED TO STEP 2B.

2B STEM MOUNT (P) FIXTURE SUSPENSION



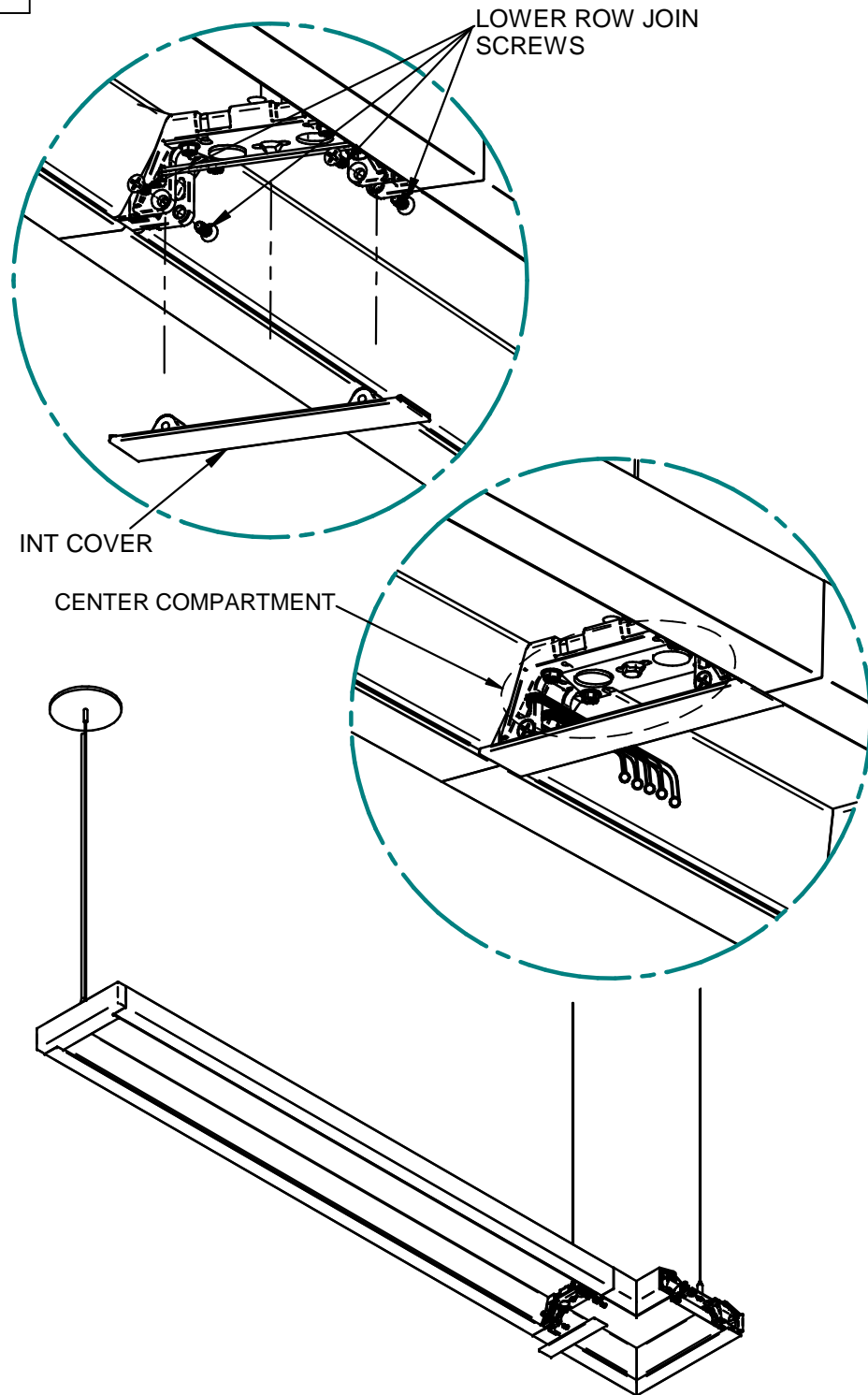
CHECK FIXTURE LABELS TO ENSURE THE CORRECT PARENT (STRAIGHT) AND CHILD (PATTERN) FIXTURES ARE JOINED TOGETHER. WITH STRAIGHT FIXTURE TO LEFT INSTALLED, ROUTE WIRES THROUGH END HEADER HOLE OR SECURE TO SIDE WITH A ZIP TIE. WITH WIRES OUT OF WAY, BRING NEXT PATTERN FIXTURE UP AND ATTACH TO STEM PIPE (SEE STEP 1B). **IF BOTH ENDS OF JOINING FIXTURES HAVE GRIPPER PLATES, REMOVE GRIPPER PLATES FROM PATTERN.** ENSURE FIXTURES ARE LEVEL WITH EACH OTHER TO AVOID CROOKED ALIGNMENT. TUCK WIRES AND CONNECTORS TO SIDE OF ONE FIXTURE FOR NOW. ALIGN FIXTURES AND BRING TOGETHER. ONCE TOGETHER, TIGHTEN UPPER ROW MOUNT SCREWS FULLY. ENSURE NO WIRES ARE PINCHED OR DAMAGED. CONTINUE TO STEP 4 FOR FINAL ROW JOIN STEPS.

3B ADDITIONAL WIRE DROPS



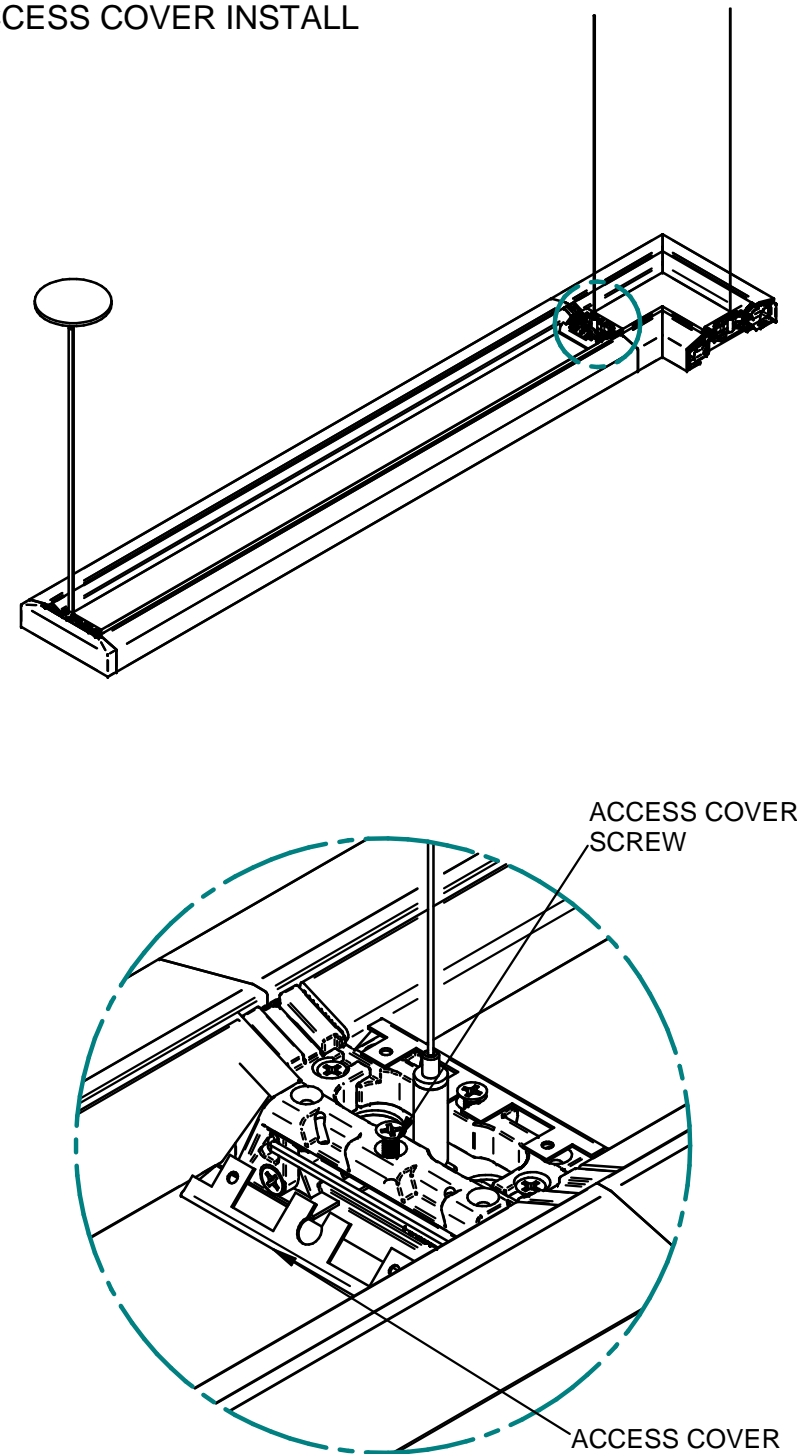
FOR WIRE DROPS AT ROW JOINTS, ROUTE WIRES FROM END OF EACH FIXTURE INTO CENTER. SECURE WIRES WITH ZIPTIE OR ROUTE THROUGH WIRE MANAGEMENT SLOT. BRING SECOND FIXTURE UP TO INSTALLED FIXTURE AND MAKE CONNECTIONS BETWEEN THE TWO FIXTURES AND THE STEM WIRES. THEN, BRING FIXTURES TOGETHER AND SECURE AS SHOWN IN STEP 2B. ENSURE WIRES ARE TUCKED INTO CENTER, THEN CONTINUE TO STEP 4 FOR FINAL ROW JOIN STEPS.

4 INTERMEDIATE COVER INSTALL



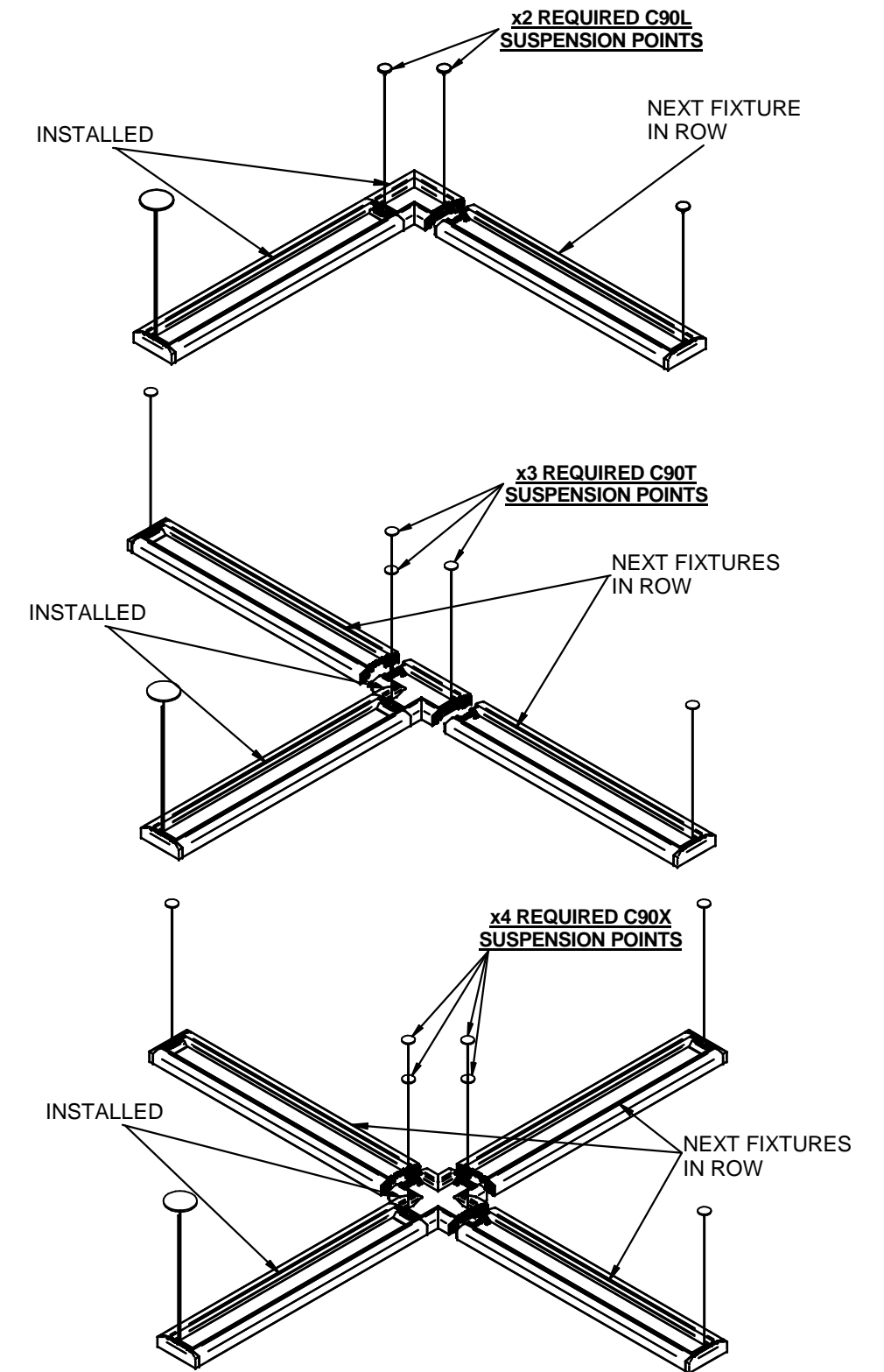
MAKE WIRE CONNECTIONS AND KEEP THEM TUCKED TO SIDE. TAKE INT COVER AND ALIGN WITH MIDPOINT OF JOINT. BRING UPWARDS UNTIL BOTTOM IS FLUSH WITH BOTTOM OF BOTH FIXTURES. PRESS UPWARDS ON INT COVER, THEN INSERT, BUT DO NOT FULLY TIGHTEN, ALL BOTTOM ROW JOINING SCREWS. WITH ALL SCREWS STARTED, FULLY TIGHTEN TO FINISH INT COVER INSTALL.

5 ACCESS COVER INSTALL



WITH FIXTURES JOINED, REINSTALL ACCESS COVERS. START WITH BOTTOM EDGE OF ACCESS COVER AND INSERT IT ABOVE INT COVER/END CAP LIP. THEN SWING THE PLATE UPWARDS UNTIL FLUSH. ENSURE NO WIRES ARE PINCHED OR DAMAGED. FINALLY, TIGHTEN ACCESS COVER SCREW TO SECURE FULLY.

6 PATTERNED ROW CONFIGURATIONS



PRIOR TO INSTALLING NEXT FIXTURE(S) IN ROW, ENSURE EACH END OF THE PATTERN IS SUSPENDED. INSTALL NEXT FIXTURE(S) IN ROW AFTER FULLY INSTALLING PATTERN BY REPEATING STEPS 1-5 AS NEEDED. FOR OPTIONAL INSTRUCTIONS, REFER TO AIRA PENDANT INSTRUCTION SHEET, 99009701