

GENERAL NOTES: (READ SHEETS COMPLETELY BEFORE STARTING)

1. LEAVE PROTECTIVE WRAPPING MATERIAL ON FIXTURE(S) UNTIL START OF INSTALLATION TO PROTECT FINISH FROM DAMAGE.
2. REFER TO SUPPLEMENTAL WIRING INSTRUCTION SHEET WHEN MAKING WIRING CONNECTIONS.
3. APPROXIMATE WEIGHT OF FIXTURE IS 4 LBS PER FOOT OF LENGTH.
4. FEED WIRES ARE FACTORY INSTALLED ON INDIVIDUAL FIXTURES.
FOR ROW MOUNTED FIXTURES FEED WIRES ARE FACTORY INSTALLED AT END OF ROW LEFT (EORL) FIXTURE ONLY.
5. FIXTURES SHOULD BE INSTALLED HORIZONTALLY IN DIRECT ONLY APPLICATION.
6. REFER TO SUPPLEMENTAL STEM SUSPENSION DRAWING 99010160 FOR ADDITIOANL CANOPY KIT DETAIL
7. 2X END CAPS REQUIRED PER FIXTURE TO MAINTAIN WET LOCATION RATING.
 - FOR ROW MOUNTED FIXTURES; END CAP STACK WILL RESULT IN INTERRUPTION OF LIGHT OPENING / LENS.

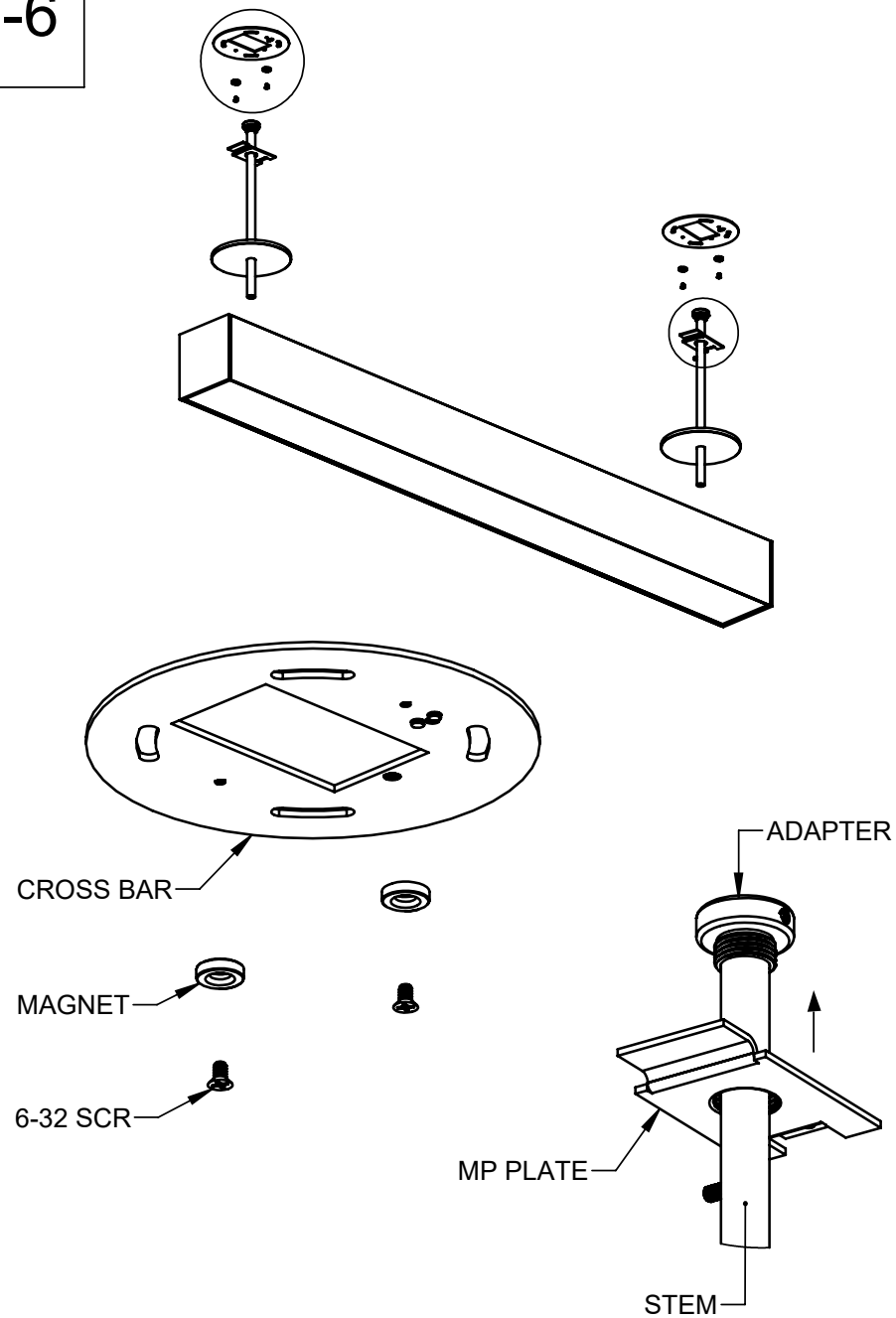
TOOLS REQUIRED

- SCREWDRIVER/DRILL
- WIRE STRIPPERS
- ADJUSTABLE WRENCH/PLIERS

SUPPLIED BY INSTALLER

- 4X4 WET RATED OCTAGON BOX
- OCTAGON BOX MOUNTING SCREWS

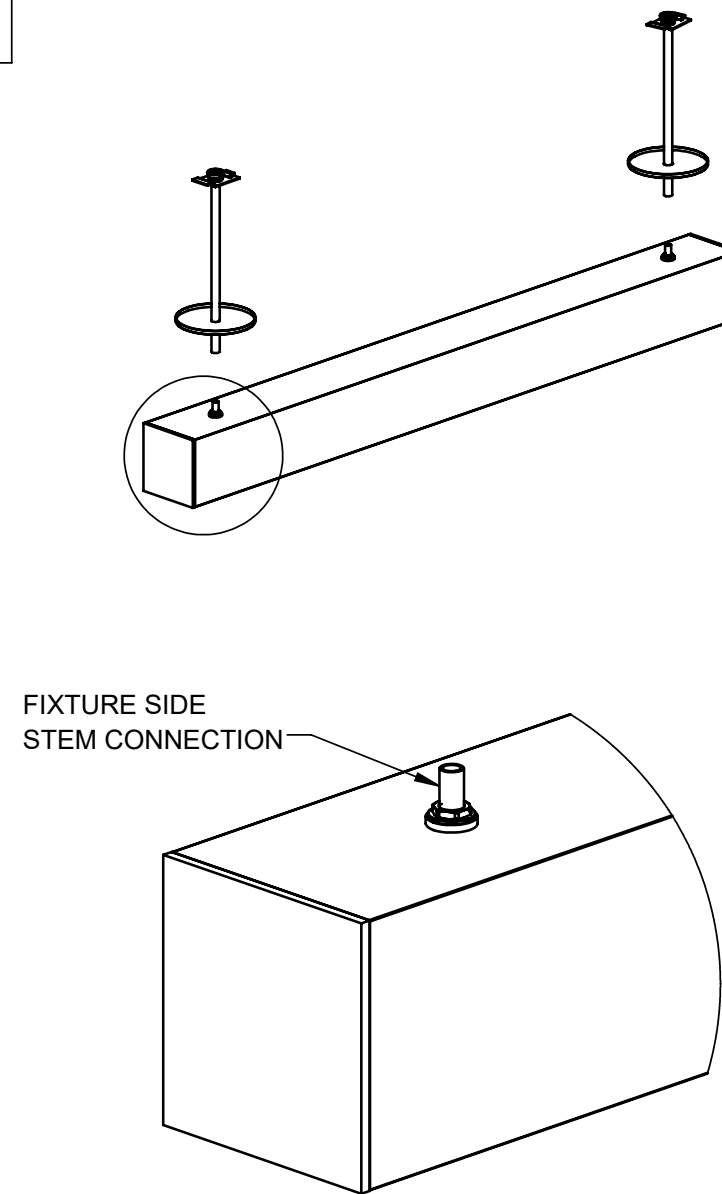
1-6



NOTES:

1. FASTEN 1X ROUND CROSSBAR TO J-BOX (FEED SIDE)
2. FASTEN REMAINING CROSSBAR(S) TO J-BOX OR SUPPORT STRUCTURE
3. FASTEN MAGNETS TO CROSSBARS VIA 6-32 SCREWS
4. SLIDE MP PLATE UP STEM AND THREAD TO ADAPTER
5. SLIDE CANOPY ONTO STEM
6. REPEAT STEPS 4 AND 5 FOR EACH MOUNTING LOCATION

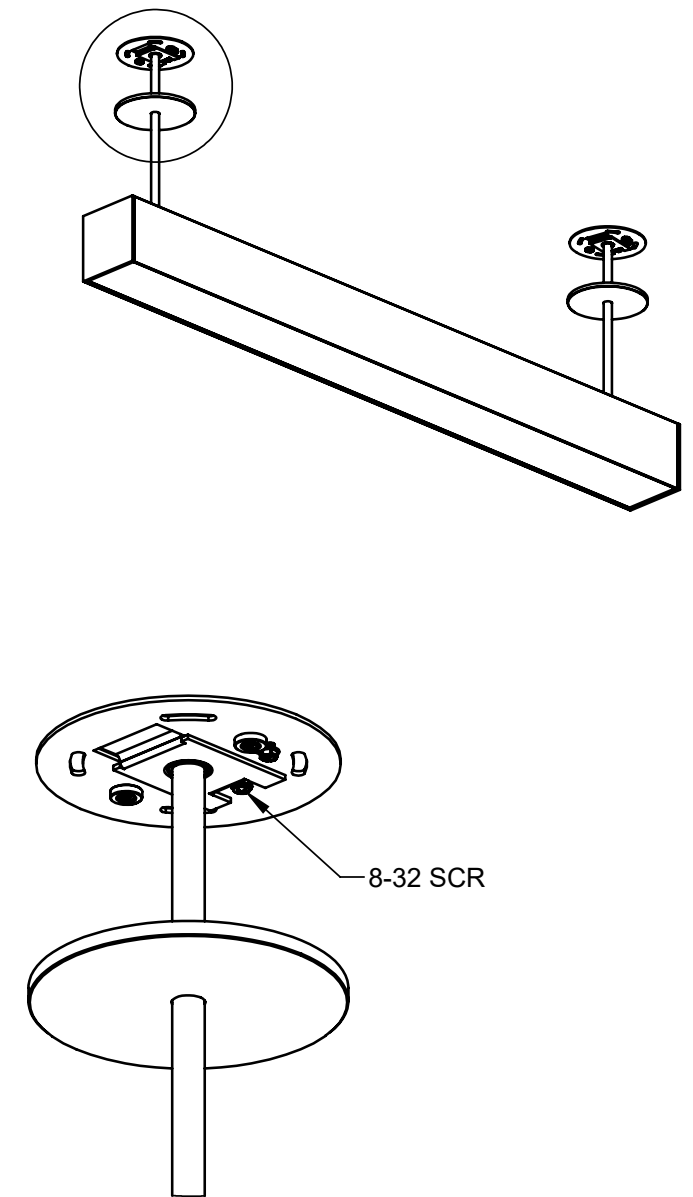
7-9



NOTES:

7. FASTEN STEMS TO FIXTURE AT EACH MOUNTING LOCATION
 - WHERE APPLICABLE, FEED FIXTURE WIRE THRU STEM
8. WHILE PROPERLY SUPPORTING FIXTURE, MANEUVER TO CEILING AND MOUNT TO CROSSBARS VIA MP PLATE
9. MAKE ANY WIRING CONNECTIONS USING WIRE NUTS AND TUCK INTO J-BOX

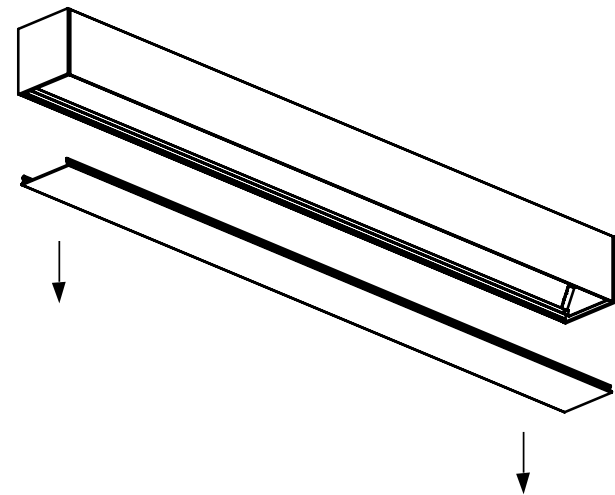
10-11



NOTES:

10. SECURE MP PLATE TO CROSSBAR VIA 8-32 SCREW
11. SLIDE CANOPY UP STEM AND ATTACH TO MAGNETS AT CEILING

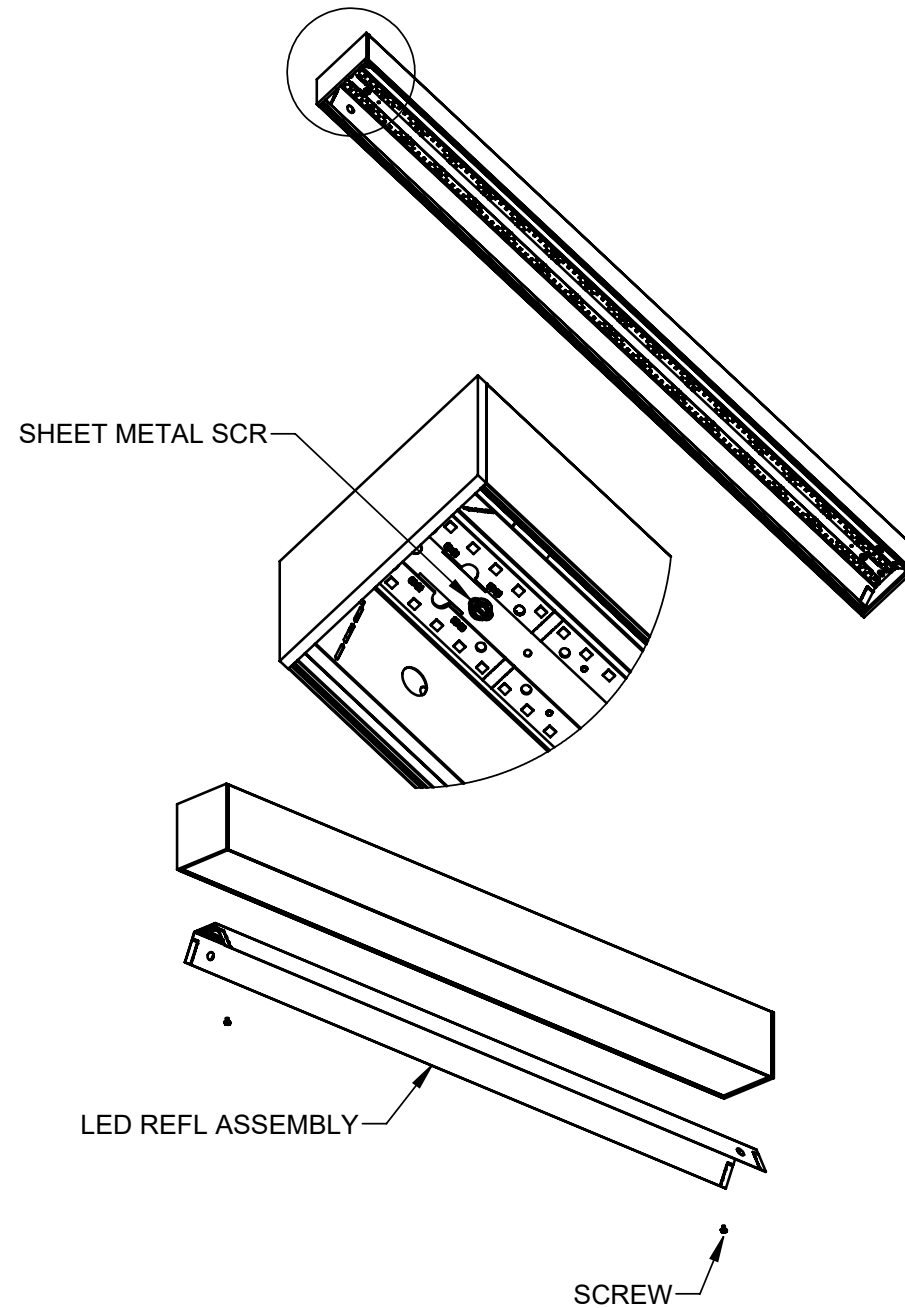
LENS REMOVAL



NOTES:

- TO REMOVE LENS:
 - PULL LENS DOWN TO DISENGAGE LENS FROM FIXTURE

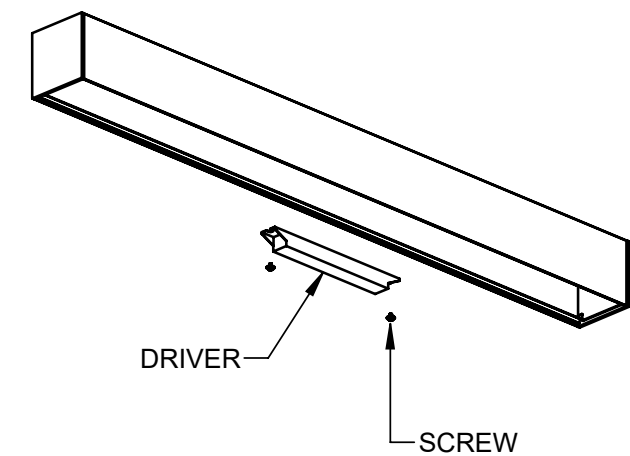
LED REFL ASSEMBLY REMOVAL



NOTES:

- BEFORE REMOVING LED REFL ASSEMBLY SEE LENS REMOVAL
- TO REMOVE LED REFL ASSEMBLY:
 - REMOVE SHEET METAL SCREWS AS SHOWN
 - DISCONNECT WIRE NUTS THAT CONNECT LED WIRES TO DRIVER
 - DISCONNECT SAFETY TETHERS CONNECTED TO REFLECTOR
 TO FULLY REMOVE LED REFL ASSEMBLY FROM HOUSING

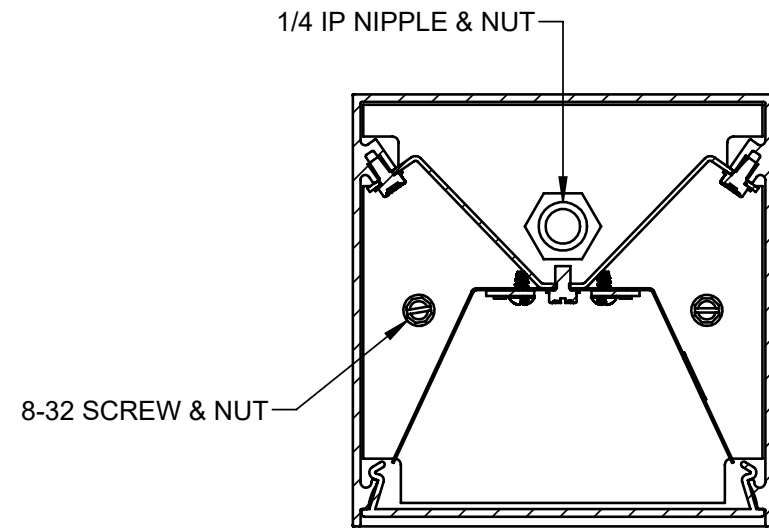
DRIVER REMOVAL



NOTES:

- BEFORE REMOVING DRIVER SEE LENS AND LED REFL ASSEMBLY REMOVAL
- TO REMOVE DRIVER:
 - REMOVE THE (2) SHEET METAL SCREWS AS SHOWN

ROW JOINING



NOTES:

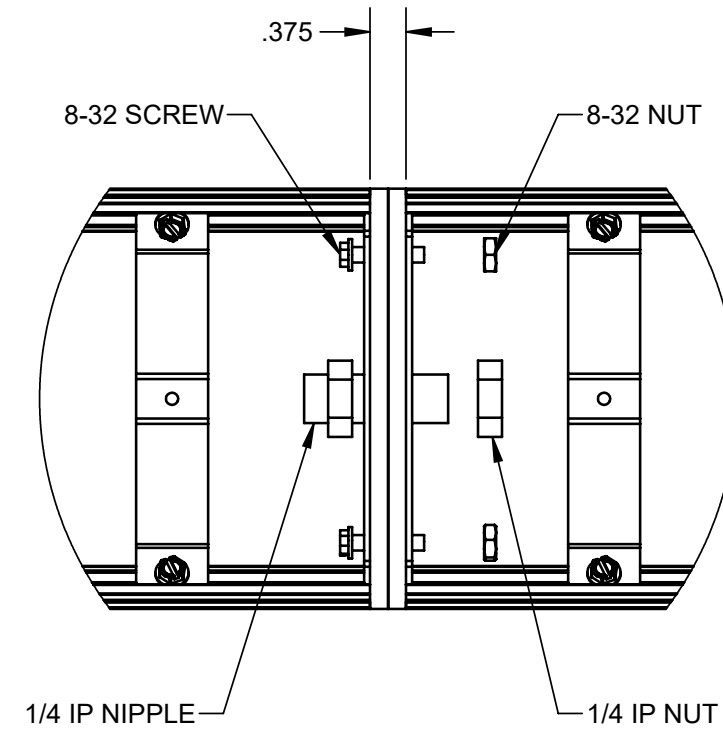
MOUNT FIRST FIXTURE IN ROW ACCORDING TO INSTRUCTIONS

ALIGN FIXTURES AND MOUNT THE NEXT FIXTURE IN ROW ACCORDING TO INSTRUCTIONS

DO NOT ASSEMBLE FIXTURES TOGETHER ON FLOOR AND LIFT INTO PLACE

BEFORE ROW JOINING FIXTURES, SEE LENS AND LED RFL ASSEMBLY REMOVAL

ROW JOINING CONT.



NOTES:

FEED THRU WIRING THROUGH 1/4 IP NIPPLE

MAKE WIRE CONNECTIONS AND TUCK CONNECTORS INTO FIXTURE

INSERT ROW JOINING HARDWARE THROUGH HOLES IN END CAP

FASTEN FIXTURES TOGETHER USING 2X 8-32 SCREW / NUT AND 1/4 IP NIPPLE / NUT