

GENERAL NOTES: (READ SHEETS COMPLETELY BEFORE STARTING)

1. LEAVE PROTECTIVE WRAPPING MATERIAL ON FIXTURE(S) UNTIL START OF INSTALLATION TO PROTECT FINISH FROM DAMAGE.
2. REFER TO SUPPLEMENTAL INSTRUCTION SHEET WHEN MAKING CONNECTIONS.
3. APPROXIMATE WEIGHT OF FIXTURE IS 4 LBS PER FOOT OF LENGTH.
4. FEED WIRES ARE FACTORY INSTALLED ON INDIVIDUAL FIXTURES.
FOR ROW MOUNTED FIXTURES FEED WIRES ARE FACTORY INSTALLED AT END OF ROW LEFT (EORL) FIXTURE ONLY.
5. FIXTURES SHOULD BE INSTALLED HORIZONTALLY IN DIRECT ONLY APPLICATION.
6. APPLY CAULK AT SEAM BETWEEN WALL AND MOUNTING PLATES.
7. 2X END CAPS REQUIRED PER FIXTURE TO MAINTAIN WET LOCATION RATING.
 - FOR ROW MOUNTED FIXTURES; END CAP STACK WILL RESULT IN INTERRUPTION OF LIGHT OPENING / LENS.

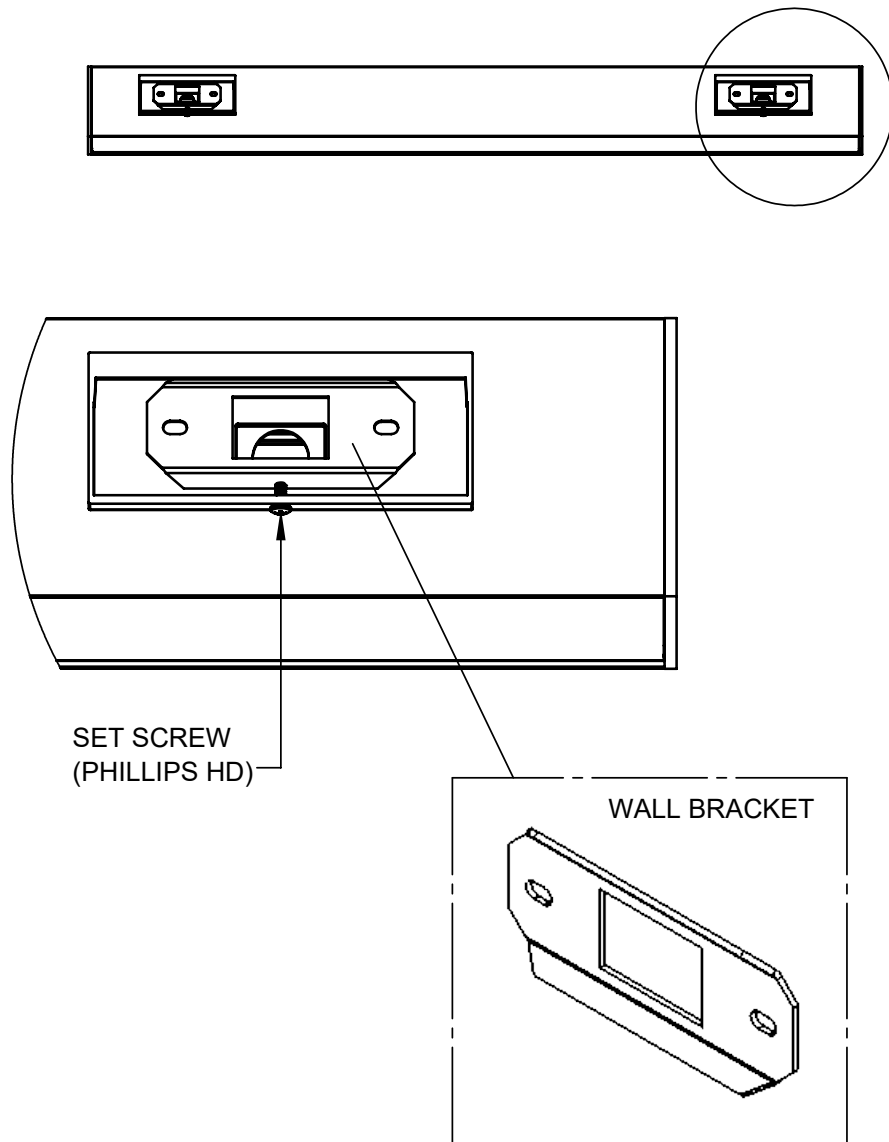
TOOLS REQUIRED

- SCREWDRIVER/DRILL
- WIRE STRIPPERS
- ADJUSTABLE WRENCH/PLIERS

SUPPLIED BY INSTALLER

- 2X4 WET RATED J-BOX
- J-BOX MOUNTING SCREWS
- SCREWS FOR MOUNTING TO WALL

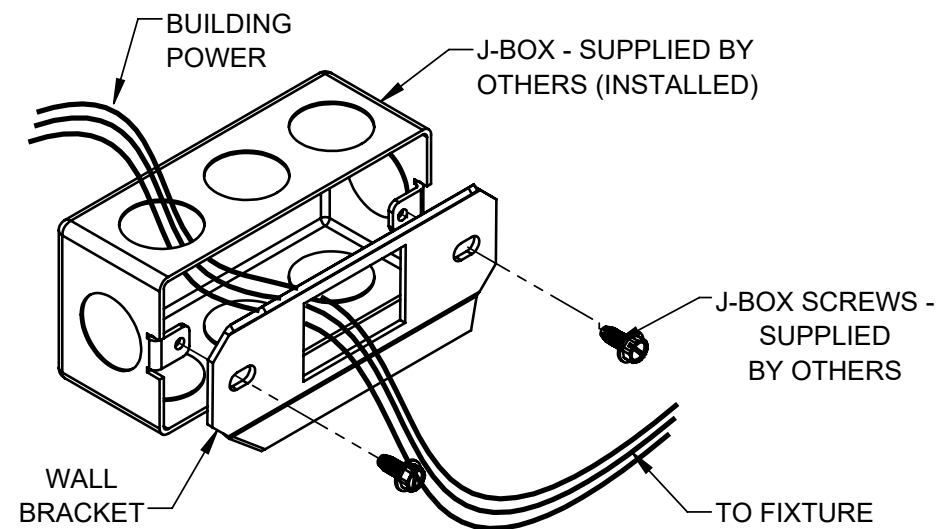
1



NOTES:

1. REMOVE WALL BRACKET(S) FROM BACK OF FIXTURE BY LOOSENING SET SCREW AND ROTATING WALL BRACKET OUT OF FIXTURE. DO NOT FULLY REMOVE SET SCREW.

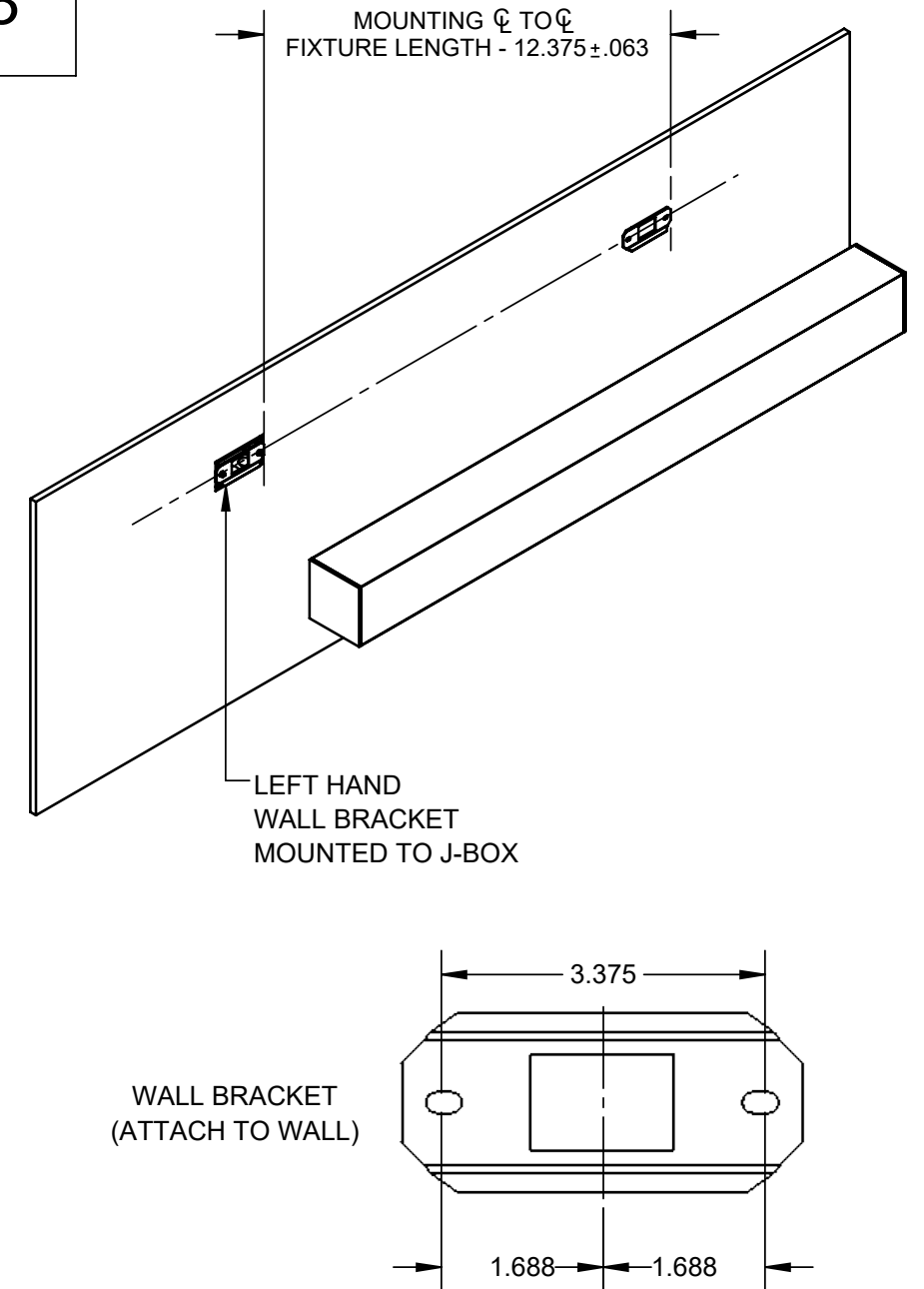
2



NOTES:

2. INSTALL J-BOX (BY OTHERS) IN DESIRED LOCATION ON WALL BASED ON FIXTURE LENGTH. ROUTE BUILDING WIRE OUT. SECURE WALL BRACKET TO J-BOX USING SCREWS (BY OTHERS)

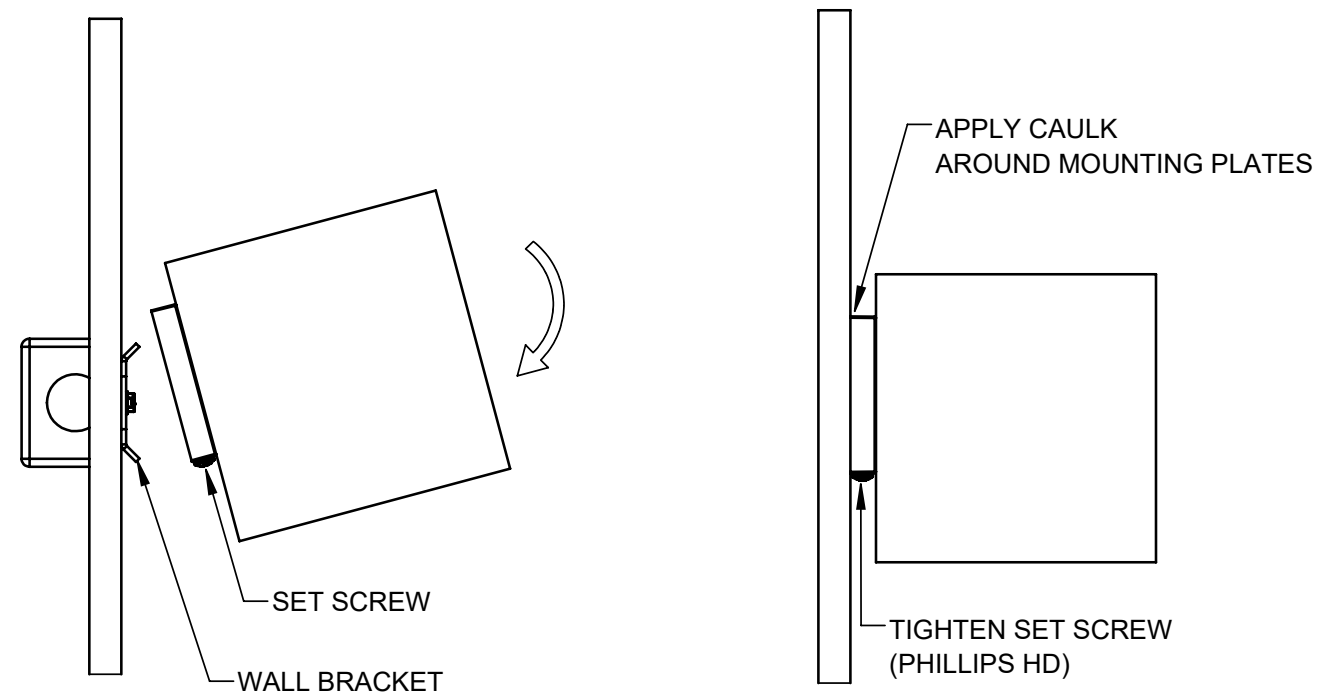
3



NOTES:

3. MOUNT LEFT HAND WALL BRACKET TO J-BOX. MOUNT RIGHT HAND WALL BRACKET TO WALL USING APPROPRIATE FASTENERS (BY OTHERS)

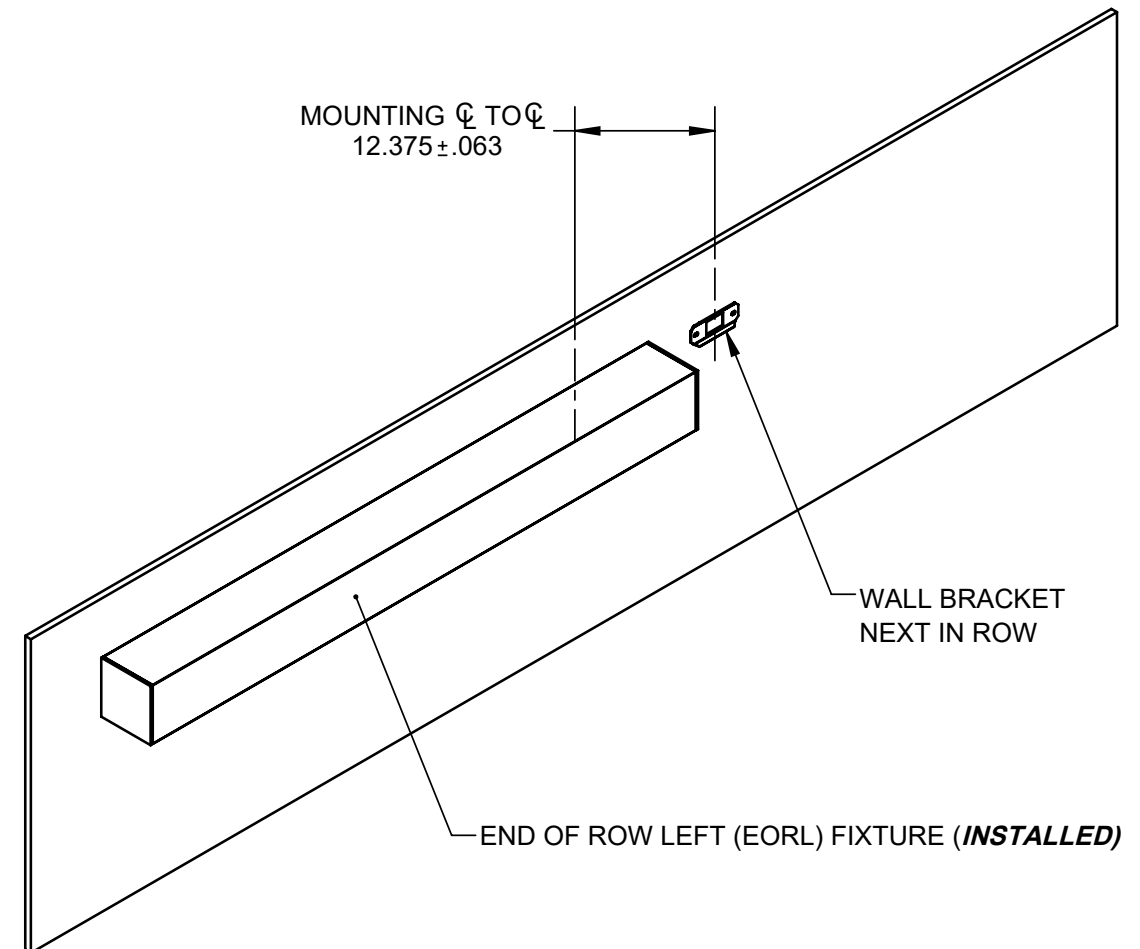
4-5



NOTES:

4. MAKE WIRE CONNECTIONS BETWEEN FIXTURE AND J-BOX. TUCK ALL WIRES AND CONNECTIONS INTO J-BOX BEFORE MOUNTING FIXTURE.
5. ENSURE SET SCREW IS LOOSE. ALIGN MOUNTING PLATE(S) TO WALL BRACKET(S). HOOK TOP OF MOUNTING PLATE TO WALL BRACKET AND ROTATE DOWN. ENSURE MOUNTING PLATE(S) ARE FLUSH TO WALL. TIGHTEN SET SCREW TO FASTEN MOUNTING PLATE(S) TO WALL BRACKET(S). REPEAT FOR ALL MOUNTING POINTS.
6. APPLY CAULK AT SEAM BETWEEN WALL AND MOUNTING PLATES.

6

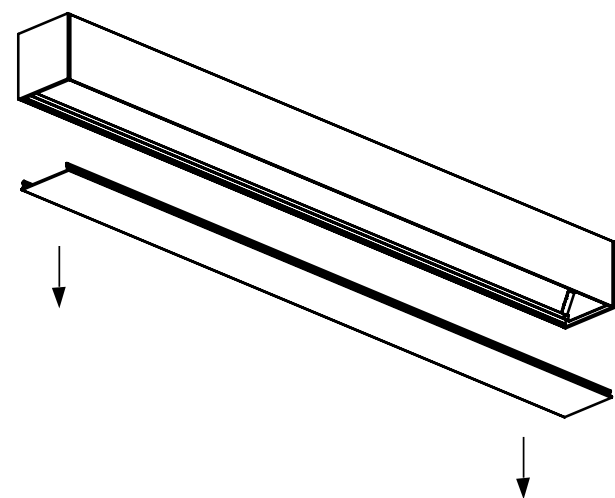


NOTES:

FOR ROW MOUNTING FIXTURES:

6. SEE STEPS 1-5 FOR MOUNTING THE FIRST, END OF ROW LEFT (EORL) FIXTURE IN ROW. REPEAT STEP 3 TO MOUNT NEXT WALL BRACKET IN ROW. SEE SHEET 1 FOR MOUNTING DIMESIONS.

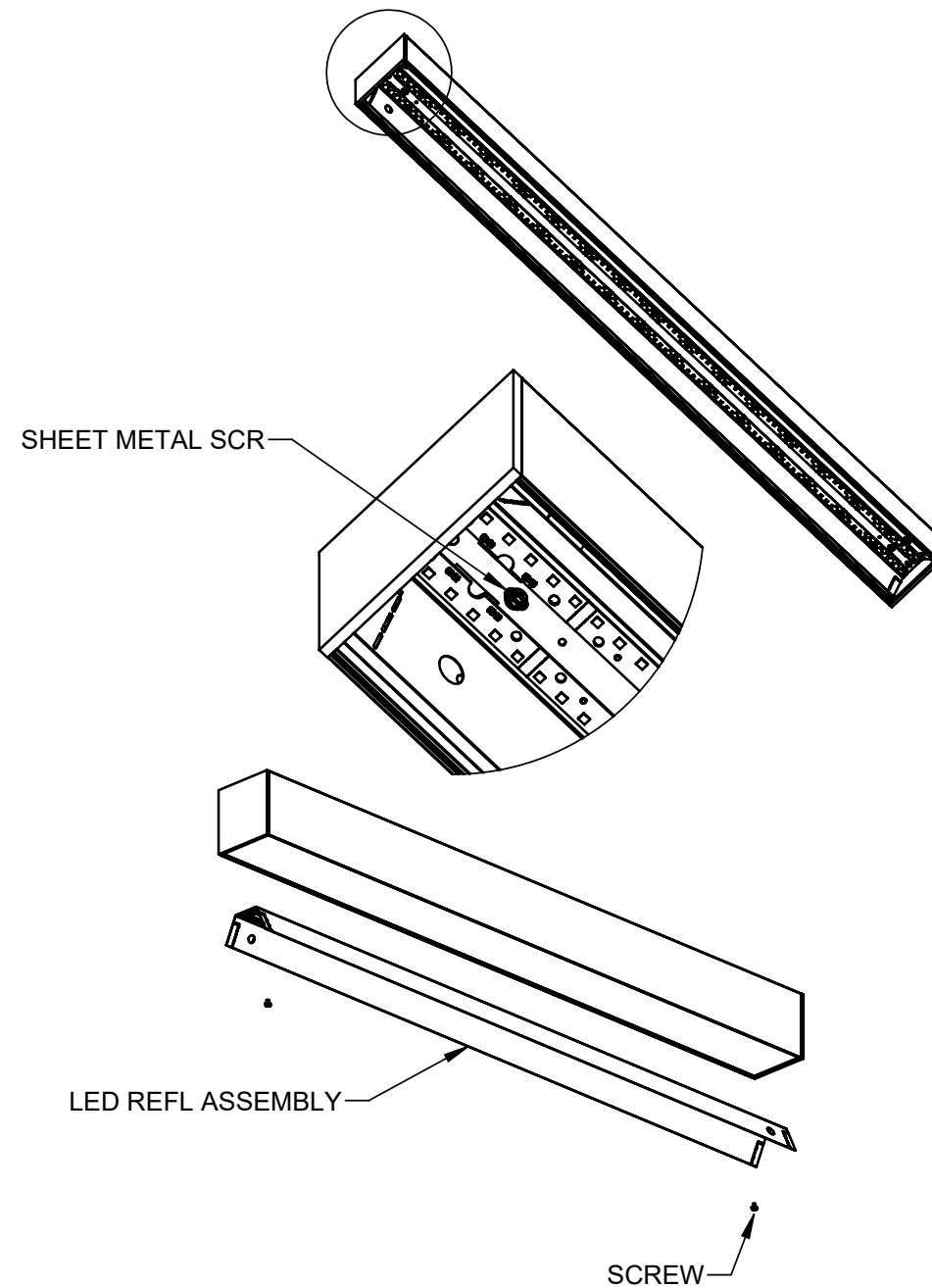
LENS REMOVAL



NOTES:

- TO REMOVE LENS:
 - PULL LENS DOWN TO DISENGAGE LENS FROM FIXTURE

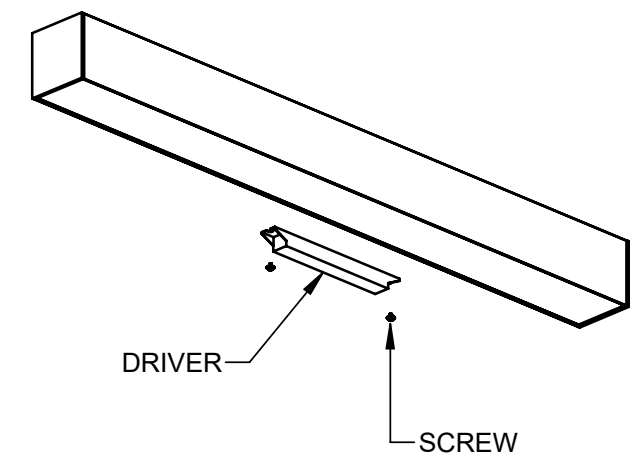
LED REFL ASSEMBLY REMOVAL



NOTES:

- BEFORE REMOVING LED REFL ASSEMBLY SEE LENS REMOVAL
- TO REMOVE LED REFL ASSEMBLY:
 - REMOVE SHEET METAL SCREWS AS SHOWN
 - DISCONNECT WIRE NUTS THAT CONNECT LED WIRES TO DRIVER
 - DISCONNECT SAFETY TETHERS CONNECTED TO REFLECTOR
 TO FULLY REMOVE LED REFL ASSEMBLY FROM HOUSING

DRIVER REMOVAL



NOTES:

- BEFORE REMOVING DRIVER SEE LENS AND LED REFL ASSEMBLY REMOVAL
- TO REMOVE DRIVER:
 - REMOVE THE (2) SHEET METAL SCREWS AS SHOWN

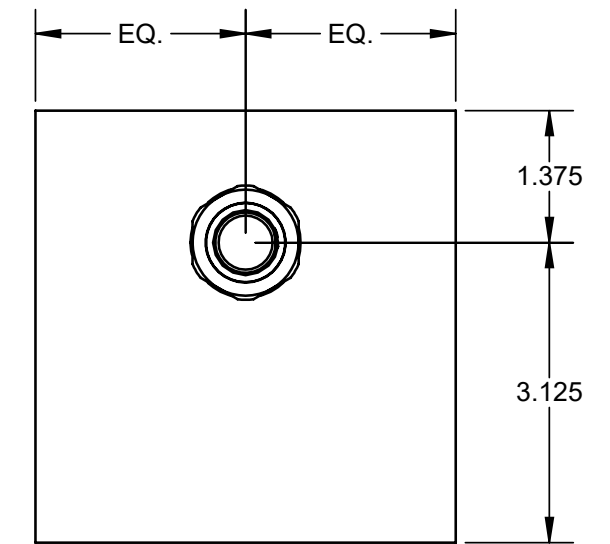
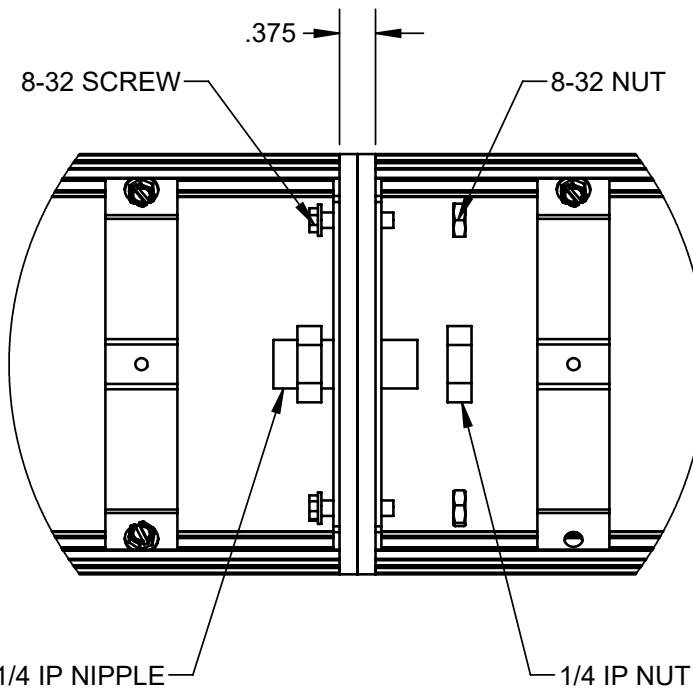
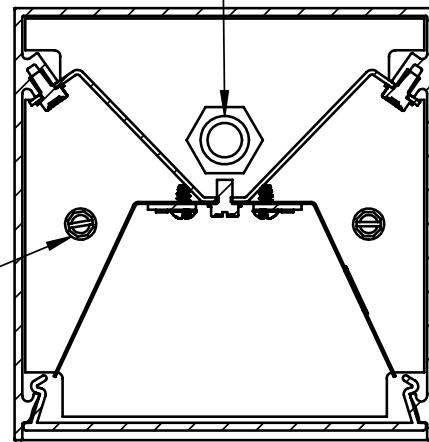
ROW JOINING

ROW JOINING CONT.

END CAP FEED (ECF)

1/4 IP NIPPLE & NUT

8-32 SCREW & NUT



NOTES:

MOUNT FIRST FIXTURE IN ROW ACCORDING TO INSTRUCTIONS

ALIGN FIXTURES AND MOUNT THE NEXT FIXTURE IN ROW ACCORDING TO INSTRUCTIONS

DO NOT ASSEMBLE FIXTURES TOGETHER ON FLOOR AND LIFT INTO PLACE

BEFORE ROW JOINING FIXTURES, SEE LENS AND LED RFL ASSEMBLY REMOVAL

NOTES:

FEED THRU WIRING THROUGH 1/4 IP NIPPLE

MAKE WIRE CONNECTIONS AND TUCK CONNECTORS INTO FIXTURE

INSERT ROW JOINING HARDWARE THROUGH HOLES IN END CAP

FASTEN FIXTURES TOGETHER USING 2X 8-32 SCREW / NUT AND 1/4 IP NIPPLE / NUT

NOTES:

1/2 TRADE SIZE LIQUID TIGHT FITTING PROVIDED IN END CAP

LIQUID TIGHT CONDUIT BY OTHERS