

GENERAL NOTES: (READ SHEETS COMPLETELY BEFORE STARTING)

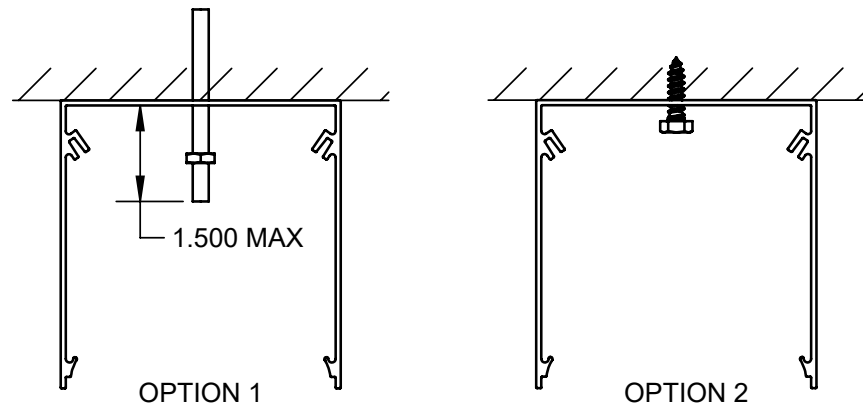
1. LEAVE PROTECTIVE WRAPPING MATERIAL ON FIXTURE(S) UNTIL START OF INSTALLATION TO PROTECT FINISH FROM DAMAGE.
2. REFER TO SUPPLEMENTAL WIRING INSTRUCTION SHEET WHEN MAKING WIRING CONNECTIONS.
3. APPROXIMATE WEIGHT OF FIXTURE IS 4 LBS PER FOOT OF LENGTH.
4. FEED WIRES ARE FACTORY INSTALLED ON INDIVIDUAL FIXTURES.
FOR ROW MOUNTED FIXTURES FEED WIRES ARE FACTORY INSTALLED AT END OF ROW LEFT (EORL) FIXTURE ONLY.
5. FIXTURES SHOULD BE INSTALLED HORIZONTALLY IN DIRECT ONLY APPLICATION.
6. APPLY CAULK AT SEAM BETWEEN CEILING AND FIXTURE.
7. 2X END CAPS REQUIRED PER FIXTURE TO MAINTAIN WET LOCATION RATING.
 - FOR ROW MOUNTED FIXTURES; END CAP STACK WILL RESULT IN INTERRUPTION OF LIGHT OPENING / LENS.

TOOLS REQUIRED

- SCREWDRIVER/DRILL
- WIRE STRIPPERS
- ADJUSTABLE WRENCH/PLIERS

SUPPLIED BY INSTALLER

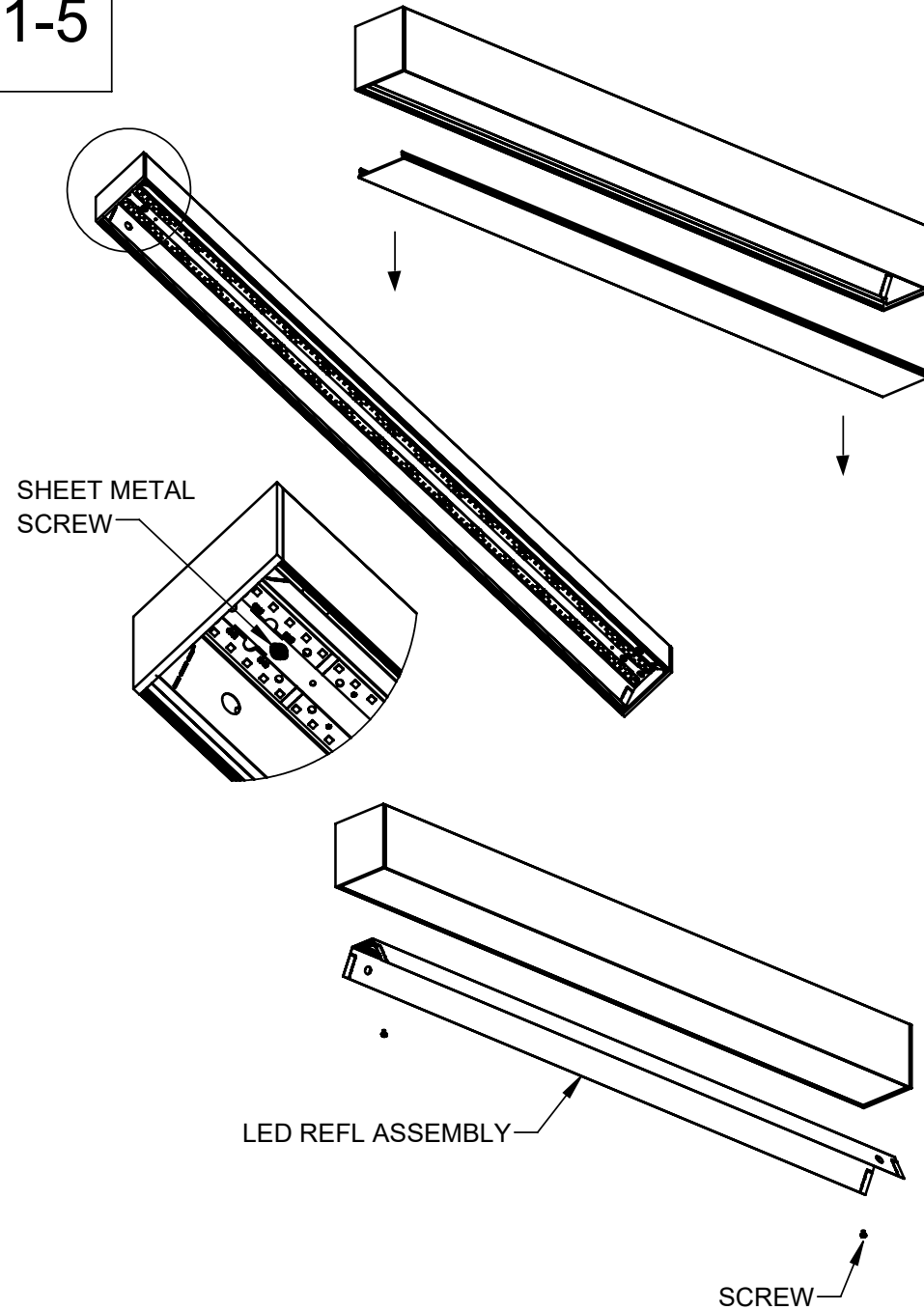
- ANCHOR SCREWS & WASHERS
- 1/4-20 ALL THREAD & NUTS (OPTIONAL)



NOTES:

- OPTION 1: MOUNT TO THREADED ROD**
 - INSTALL THREADED RODS TO STRUCTURE (1/4-20 ROD BY OTHERS)
 - FASTEN FIXTURE TO THREADED ROD WITH NUTS (BY OTHERS)
- OPTION 2: MOUNT TO SUPPORT STRUCTURE**
 - FASTEN DIRECTLY TO SUPPORT STRUCTURE (1/4 LAG SCREWS BY OTHERS)

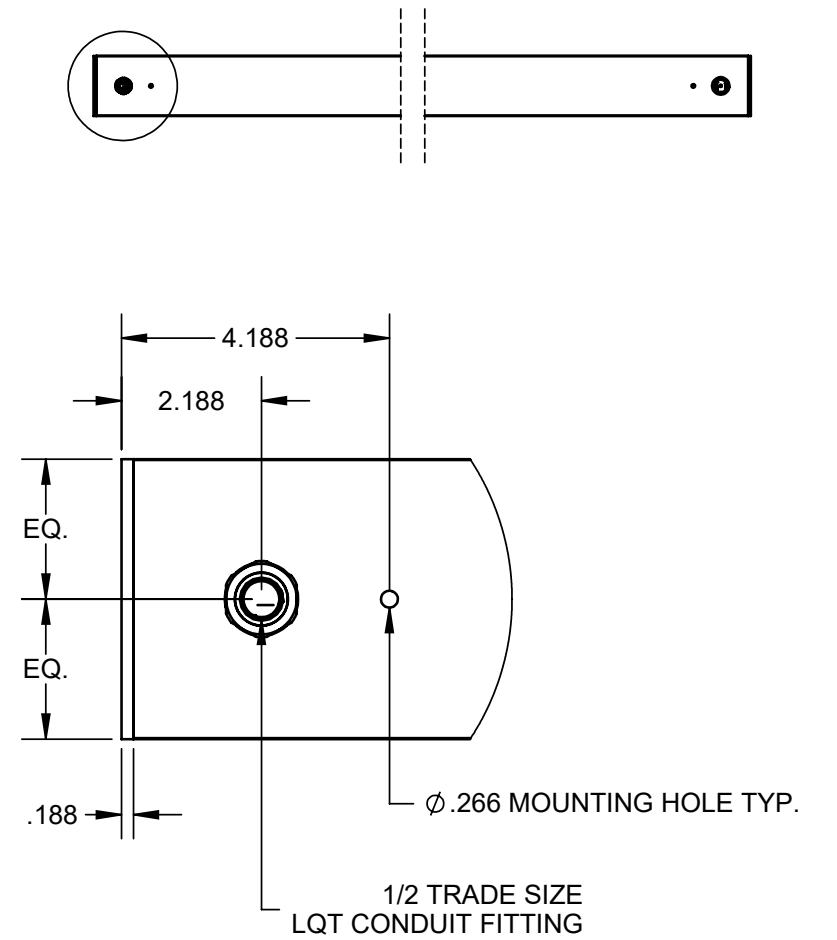
1-5



NOTES:

1. PULL LENS DOWN TO DISENGAGE LENS FROM FIXTURE
2. REMOVE LENS FROM FIXTURE
3. REMOVE SHEET METAL SCREWS FROM LED REFL ASSEMBLY
4. DISCONNECT WIRE NUTS THAT CONNECT LED WIRES TO DRIVER
5. REMOVE LED REFL ASSEMBLY FROM HOUSING

6-10



NOTES:

6. RAISE FIXTURE TO CEILING
7. FEED WIRES THRU LQT FITTING AND MAKE ELECTRICAL CONNECTIONS INSIDE FIXTURE
8. FASTEN FIXTURE TO CEILING USING DETERMINED MOUNTING OPTION
9. REINSTALL LED REFL ASSEMBLY AND LENS IN REVERSE ORDER FROM PREVIOUS STEPS
10. APPLY CAULK AROUND FIXTURE SEAM AT CEILING

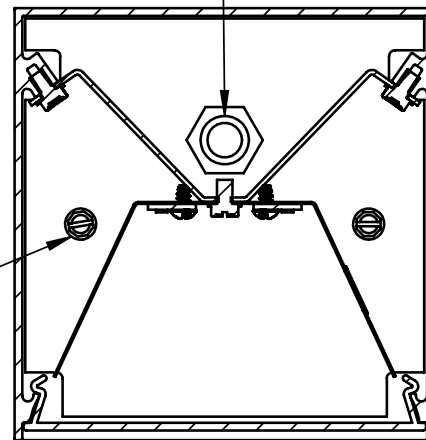
ROW JOINING

ROW JOINING CONT.

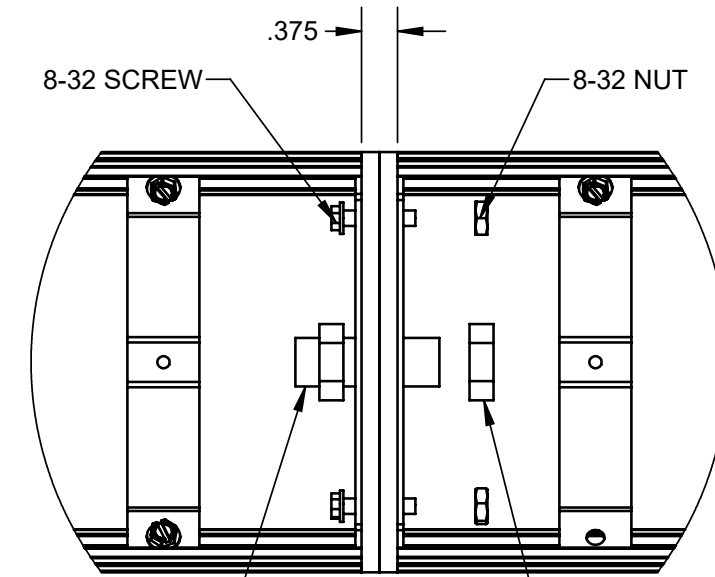
END CAP FEED (ECF)

1/4 IP NIPPLE & NUT

8-32 SCREW & NUT

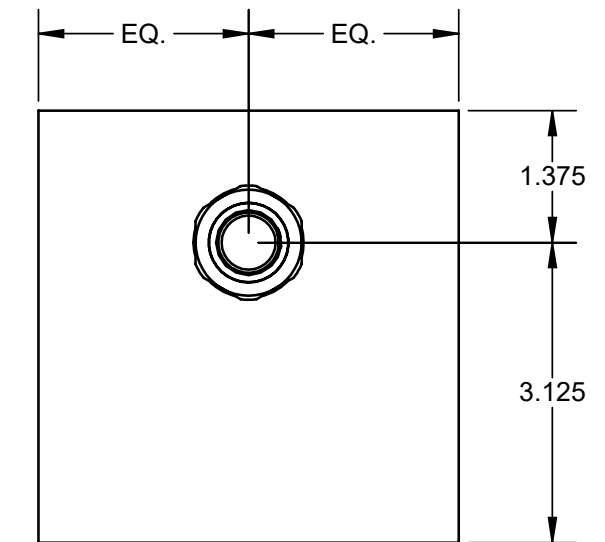


.375
8-32 SCREW 8-32 NUT



1/4 IP NIPPLE

1/4 IP NUT



NOTES:

MOUNT FIRST FIXTURE IN ROW ACCORDING TO INSTRUCTIONS

ALIGN FIXTURES AND MOUNT THE NEXT FIXTURE IN ROW ACCORDING TO INSTRUCTIONS

DO NOT ASSEMBLE FIXTURES TOGETHER ON FLOOR AND LIFT INTO PLACE

BEFORE ROW JOINING FIXTURES, SEE LENS AND LED RFL ASSEMBLY REMOVAL

NOTES:

FEED THRU WIRING THROUGH 1/4 IP NIPPLE

MAKE WIRE CONNECTIONS AND TUCK CONNECTORS INTO FIXTURE

INSERT ROW JOINING HARDWARE THROUGH HOLES IN END CAP

FASTEN FIXTURES TOGETHER USING 2X 8-32 SCREW / NUT AND 1/4 IP NIPPLE / NUT

NOTES:

1/2 TRADE SIZE LIQUID TIGHT FITTING PROVIDED IN END CAP

LIQUID TIGHT CONDUIT BY OTHERS