

NOTE: Components shown in images are representative only and may vary based on the configuration ordered.

**WARNINGS & SAFETY INFORMATION: PLEASE READ CAREFULLY!**

**WARNING:** Risk of fire or electric shock. Luminaire wiring and electrical parts may be damaged when drilling for installation. Check for enclosed wiring and components.

**WARNING:** Risk of fire or electric shock. If not qualified, do not attempt installation. Contact a qualified electrician.

**WARNING:** Risk of fire or electric shock. Do not leave any other open holes in an enclosure of wiring or electrical components.

**WARNING:** To prevent wiring damage or abrasion, do not expose wiring to edges of sheet metal or other sharp objects.

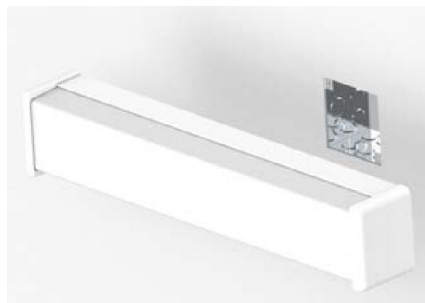
**WARNING:** This product is sensitive to Electrical Static Discharge (ESD). Care should be taken to avoid direct contact with the LEDs. Installers should be grounded using a wrist strap or other suitable method of grounding. Failure to ground the installer may cause pre-mature failures and void the fixture warranty.

**MOUNTING REQUIREMENTS**

4" Square or 4" Octagon Junction Box

**NECESSARY TOOLS**

- Philips Head Screw Driver
- Wire Nuts



Surface Mount

**STEP 1**

First remove the mounting bracket from the back of the fixture by unscrewing the four screws located on the bottom/top of the fixture (see Figure 1). Next, slide the mounting plate away to remove the bracket from the housing. Retain the screws as you will need these later to secure the fixture back to the mounting bracket.

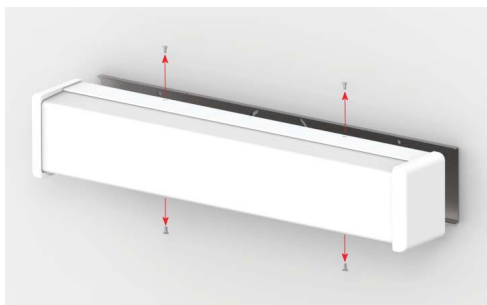


Figure 1

**STEP 2**

Inspect the mounting surface to make sure that it is structurally sound and relatively flat.

**STEP 3**

Position the Back Plate against the wall as shown in Figure 2 so that the wiring access hole is positioned over the electrical junction box. Use a level along the top edge of the Back Plate and adjust accordingly until the Back Plate is level.

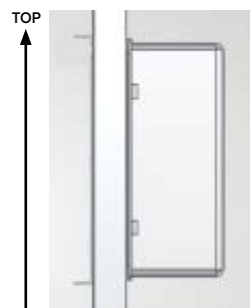


Figure 2

To ensure proper fit. Make sure the orientation of the mounting bracket is similar as shown. Mounting plate must be flat against the wall.

**STEP 4**

Use the Back Plate as a template and mark the mounting holes on the wall see (Figure 3).

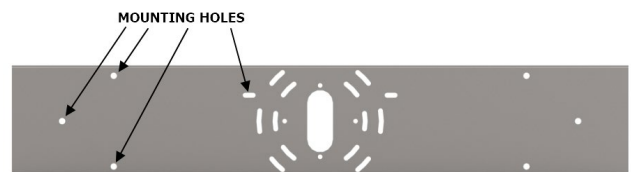


Figure 3

**STEP 5**

Install an appropriate wall anchor at the marked mounting holes. If a mounting hole aligns with the wall structure, an anchor may not be required.

**STEP 6**

Pull the supply wiring through the wiring access hole and align the Back Plate to the previously marked mounting holes. Attach the Plate to the wall (see Figure 4).

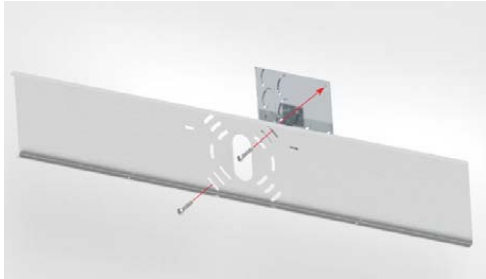


Figure 4

**STEP 7**

Secure the Safety Cable to the Mounting Plate using (1) #10x1/2 screw (see Figure 5).

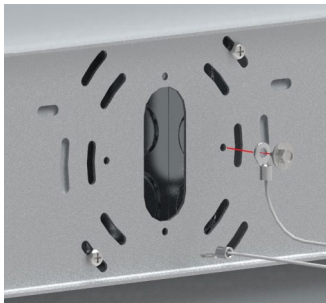


Figure 5

**STEP 8**

If wires are not accessible from the back of the fixture, remove the driver plate from the fixture shown in Figure 6. The driver plate is secured to the fixture with #8 screws.

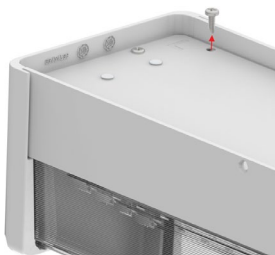
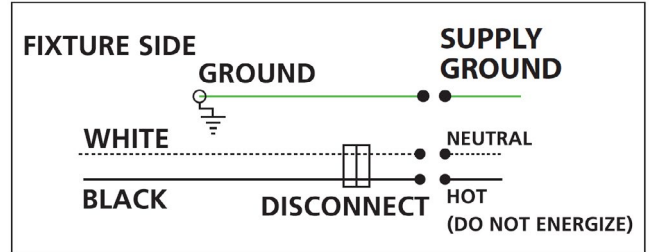


Figure 6

**STEP 9**

Connect green wires from fixture to ground wires from junction box. Connect incoming power lines to fixture with provided disconnects. Disconnects are safe for #12-#18 awg solid wire and #12-#14 awg stranded wire. Secure wires and place the wiring connections back inside the junction box.



**STEP 10**

Center the fixture so the side rails (on the back of the luminaire) will fit over the mounting plate. Before installing the luminaire to the bracket, ensure that all wires are clear of the opening to avoid pinching the connections. Align the mounting holes in the fixture with the holes in the mounting plate. Once aligned, secure the fixture to the mounting plate with 4 screws. Verify final installation appears as seen below (Figure 7, Figure 8).

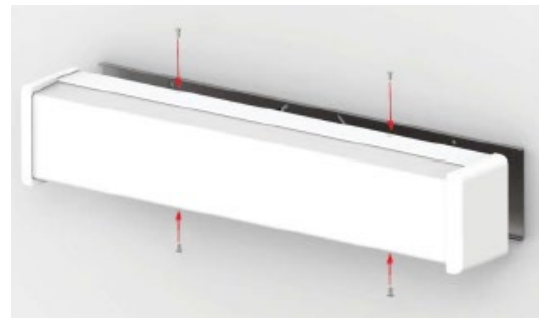


Figure 7

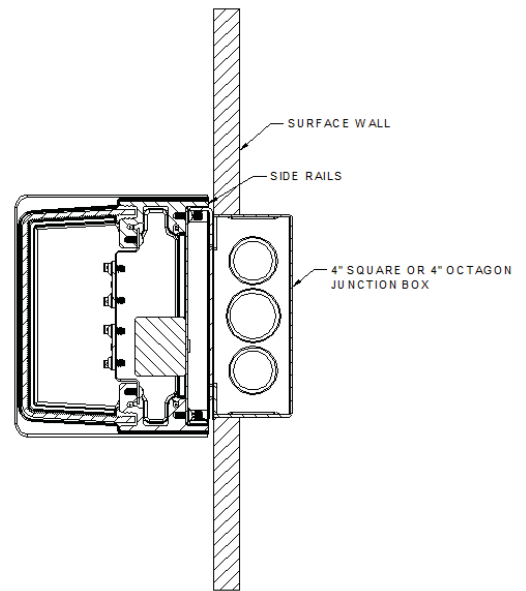


Figure 8

Wall3™  
WALL BRACKET

**STEP 11**

IP65 Wall Mount: To ensure IP65 is maintained after mounting, caulk the gap between the fixture and the wall. The caulk will ensure no water or dust can get into the J-Box (see Figure 9).

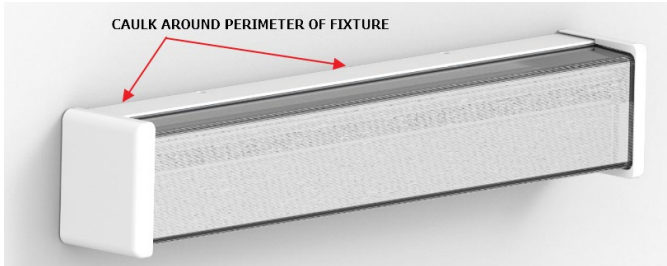


Figure 9