

CRN2-OCS

MOTION SENSOR

**Attention**

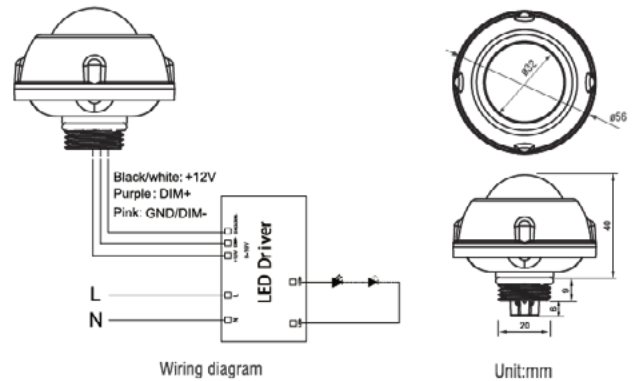
1. Please read the instructions carefully before using this product and keep it for future reference.
2. The sensor should be installed by a qualified electrician and ensure power is off before the installation.
3. We reserve the right to modify any incorrect text, image and necessary technical parameters.
4. Any unauthorized modification is forbidden, otherwise all gaurantees will be immediately invalid.

Installation Precautions

1. Turn the power off at the circuit breaker before installing the sensor.
2. Do not allow bare wires to show.
3. Assemble any necessary mounting accessories.
4. Have the sensor's lens lower than edge of the fixture and keep the sensor away from heating part.

Application Enviroment

1. Do not mount it outdoors, as it is sensitive to temperature changes.
2. Do not mount in areas with sudden changes in temperature or airflow.
3. Do not have shelves between sensor to the presence area.

**TECHNICAL DATA**

Operating Voltage:	12±2V DC
Operating Current	30mA
Output:	DIM 0-10V
Stand-by Power:	<0.5W
Brightness:	0%-100% Quick Setting: 70%/80%/90%/100%
Hold Time:	10s/1min/10min/30min
Daylight Threshold:	10Lux/30Lux/50Lux/100Lux/Disable
Stand-by Time:	1min/30min/60min + ∞
Stand-by Dimming Level:	10%/20%/30%/50%
Detection Angle:	≤120° (wall mounted), 360° (Ceiling mounted)
Mounting Height:	≤12m/39.37ft (Ceiling mounted)
Detection Range:	Radius, 2-4m/6.58-13.12ft (Ceiling mounted)
Operating Temperature:	-30°C~+60°C
IP Rating:	IP65 (Mounted on the light fixture)
Warm-up Period	50S

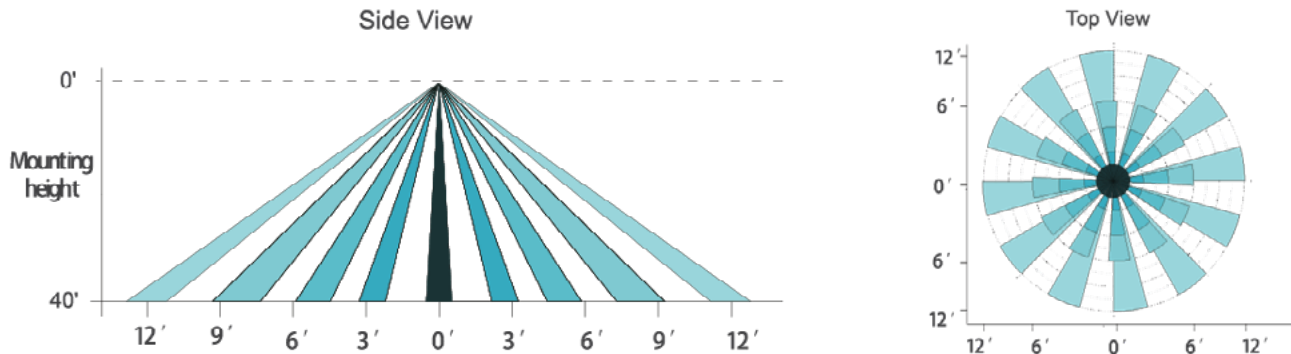
Note: Default setting - Brightness: 100%, Hold time: 1min, Stand-by dimming level: 20%, Stand-by time: 1min, Sensitivity: 100% (non-adjustable) Daylight: Disable.

CRN2-OCS

MOTION SENSOR

DETECTION COVERAGE

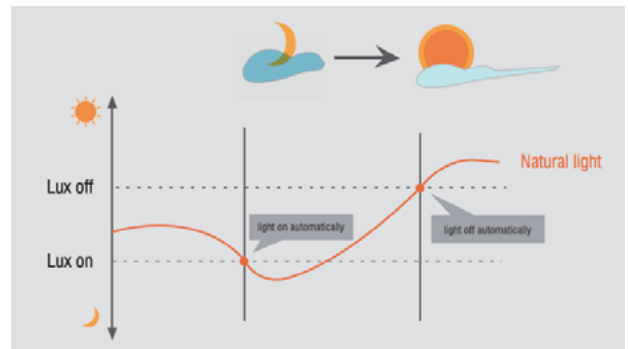
This figure indicates the maximum distance at the highest mounting height with 100% sensitivity.

**LUX ON/OFF**

Adopted dual PD technology, PRC Motion Sensor is able to differentiate artificial light brightness from natural light after installed inside the fixture, and automatically turn off light when ambient brightness exceeds preset lux level.

Preconditions to use the Lux-off function:

1. Stand-by time is + ∞
2. Stand-by dimming level is on 10%, 20%, 30%, or 50%
3. Daylight threshold is on 10Lux, 30Lux, 50Lux, or 100Lux (About 20% error between actual and reference values).

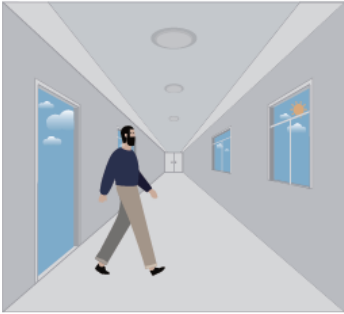
**CRN2-OCS REMOTE**

CRN2-OCS

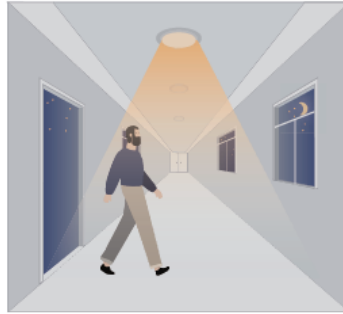
MOTION SENSOR

CRN2-OCS PERFORMANCE

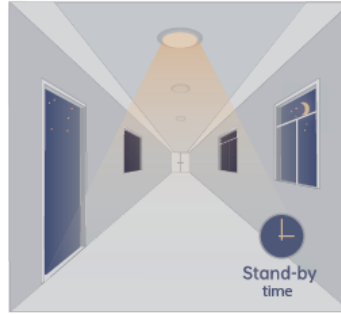
1. Automatic On/Off Function



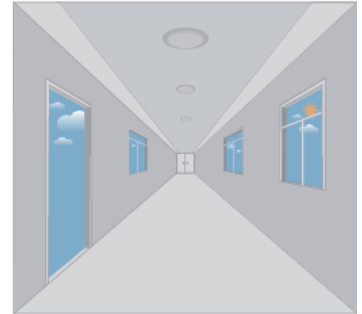
With sufficient daylight, even when motion is detected, light will remain OFF.



With insufficient daylight, the sensor turns light ON when motion gets detected.

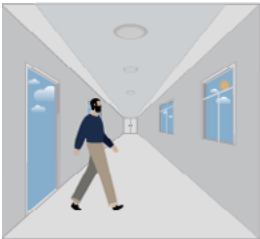


Light dims to stand-by level if no motion detected after hold time.

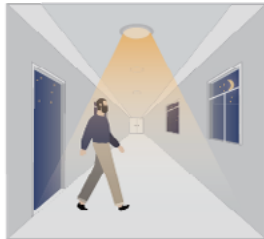


Light OFF when ambient lux level is higher than preset lux amount.

2. Corridor Function, Bi-level Dimmable



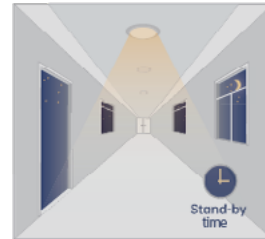
With sufficient daylight, the sensor keeps light OFF even motion gets detected, daylight function is on.



With insufficient daylight, the sensor turns light ON when motion gets detected.



After there's no motion detected, the sensor keeps light ON brightness setting for hold time.

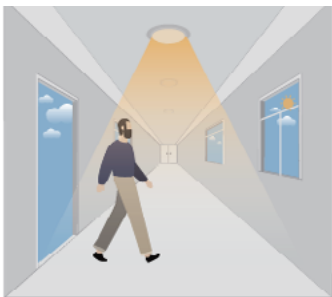


After holdtime, sensor dims light to stand-by dimming level for stand-by time.



The sensor turns OFF light automatically after the stand-by time when there's no motion detected.

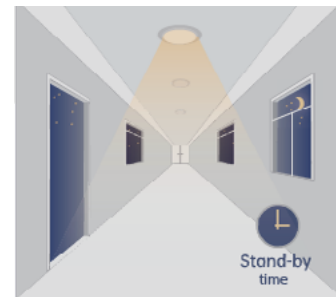
3. Daylight Disable



The sensor turns light ON when motion gets detected.



The sensor keeps light ON for hold time after motion leaves.



After hold time, sensor dims light to stand-by dimming level for stand-by time.



The sensor turns OFF light automatically after the stand-by time when there's no motion detected.